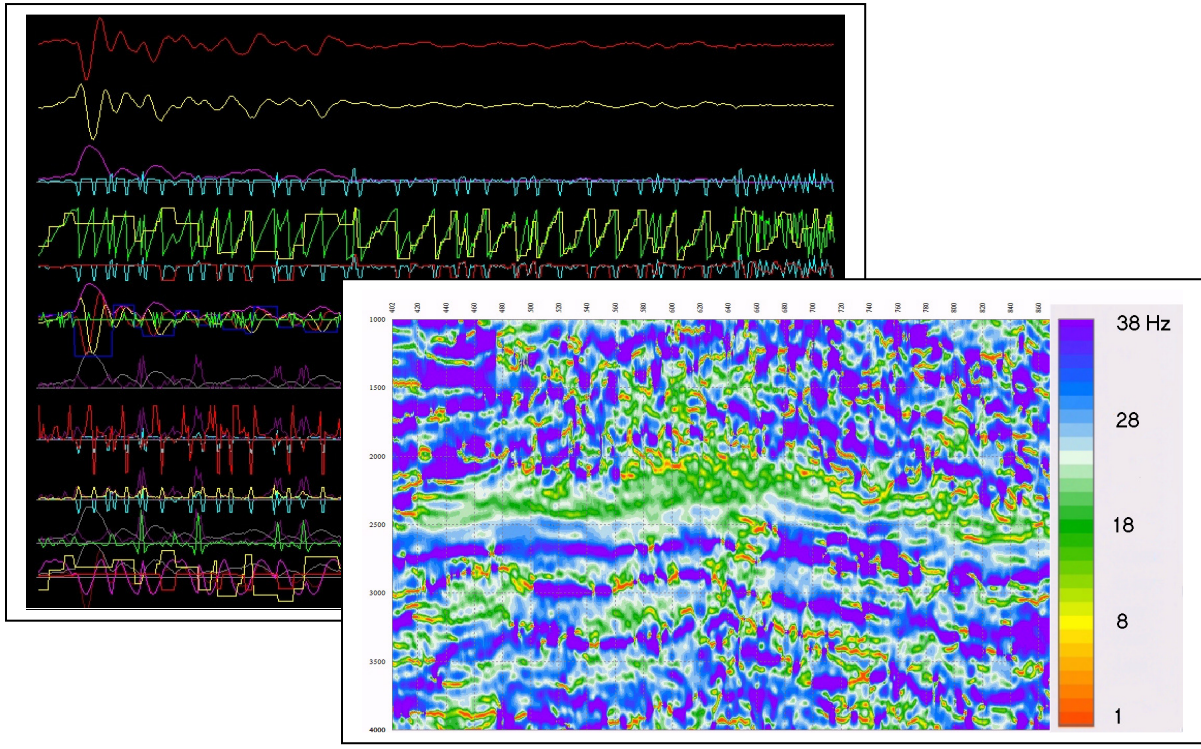


GP-411: Seismic Attributes



Who Should Attend

Seismic Interpreters, Processing Geophysicists and Geologists.

Overview

Seismic method is commonly used to delineate sub-surface structures. Seismic attributes analysis are a set of tools used to extract additional information from seismic data such as; lithology, porosity and fluid content. This course covers complex trace analysis, the basis for attributes analysis, and focuses on the computation and usage of a group of attributes.

Contents

- Seismic Resolution and Dynamic Range
- Hilbert Transform
- Complex Trace Analysis
- Post Stack Attributes
- Computation of Post Stack Attributes
- Pre Stack Attributes: Amplitude Versus Offset/Angle
- Seismic Attributes Examples
- Seismic Attributes Visualization Techniques
- Multi-Attributes and Neural Networks