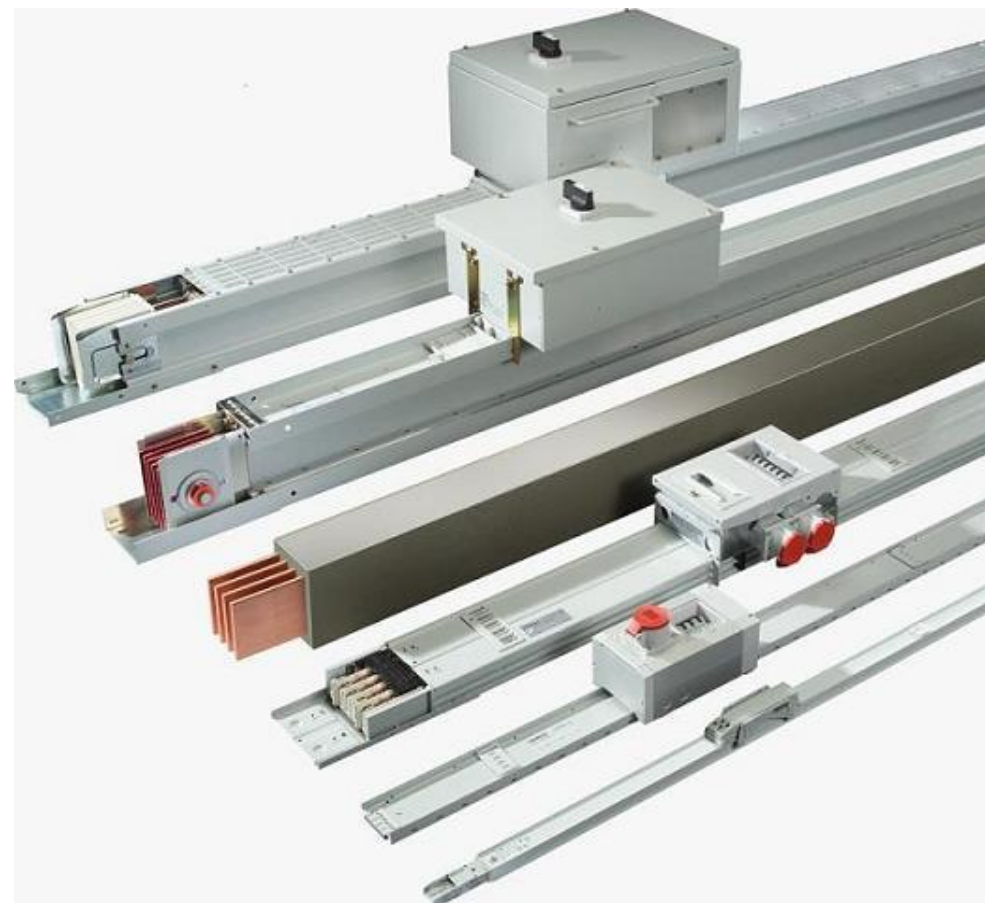


PROJECT:

OGDCL-Zishan

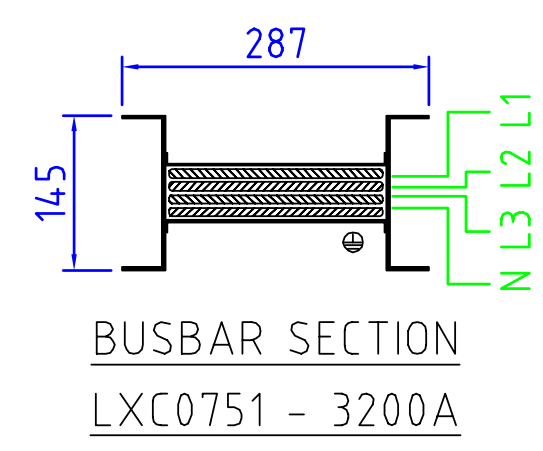
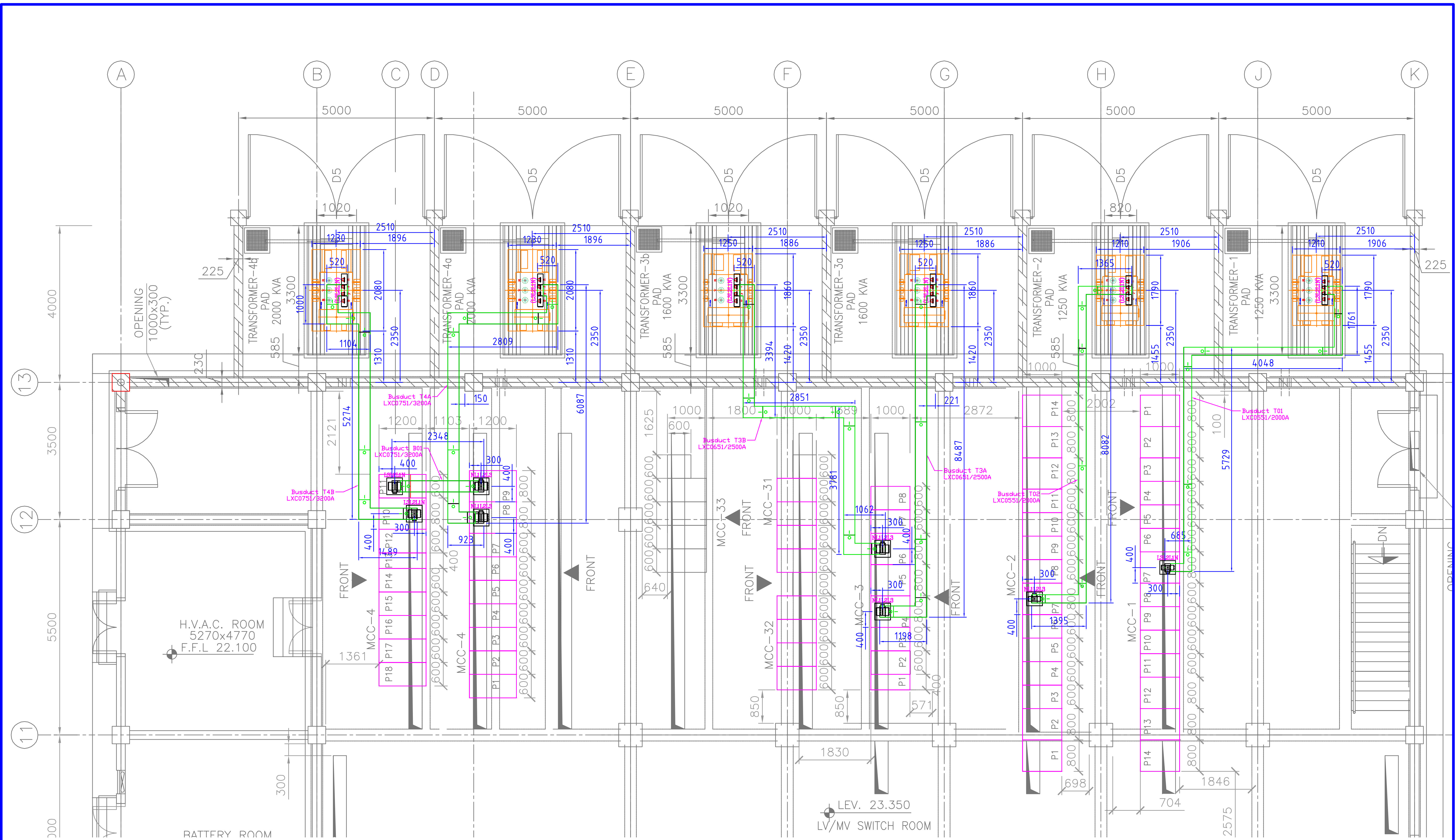
Siemens Busbar Trunking Systems

ENGINEERING DRAWINGS, January 2016
REVISION R05 (07-01-2016)



SIEMENS EM_MS

TECHNICAL SPECIFICATION									
SIVACON 8 PS, LX TYPE									
No.	Description	Unit							
1	Standards and regulations		DIN EN 60439-1/VDE 0660-500 DIN EN 60439-2/VDE 0660-502						
2	Resistance to climate		Damp heat, constant, acc. to IEC 60068-2-78 Damp heat, cyclic, acc. to IEC 60068-2-30						
3	Ambient temperature Min./Max./mean level over 24hours	°C	-5/+40/+35						
4	Degree of protection		IP54						
5	Torque for joint block (re-use)	Nm	120±10						
6	Busbar surface treatment		Coated with insulating material, aluminium also nickel-plated, both aluminium and copper tinned at contact point						
7	Trunking unit material		Painted aluminium casing						
8	Colour of trunking units		RAL 7032						
9	Rated insulation voltage Ui of the trunking units acc. to DIN EN 60439-1	V~ V-	1000. 1000.						
10	Overvoltage category/pollution degree		III/3 acc. to EN 60947						
11	Rated operating voltage Ue of the trunking units	V~	690						
12	Rated frequency	Hz	50 ... 60						
13	Conductor		Copper						
14	Conductor configuration		L1 + L2 + L3 + N (4 bars, PE as housing)						
15	Rated current	A	2000A (LXC0551); 2500A (LXC0651); 3200A (LXC0751)						

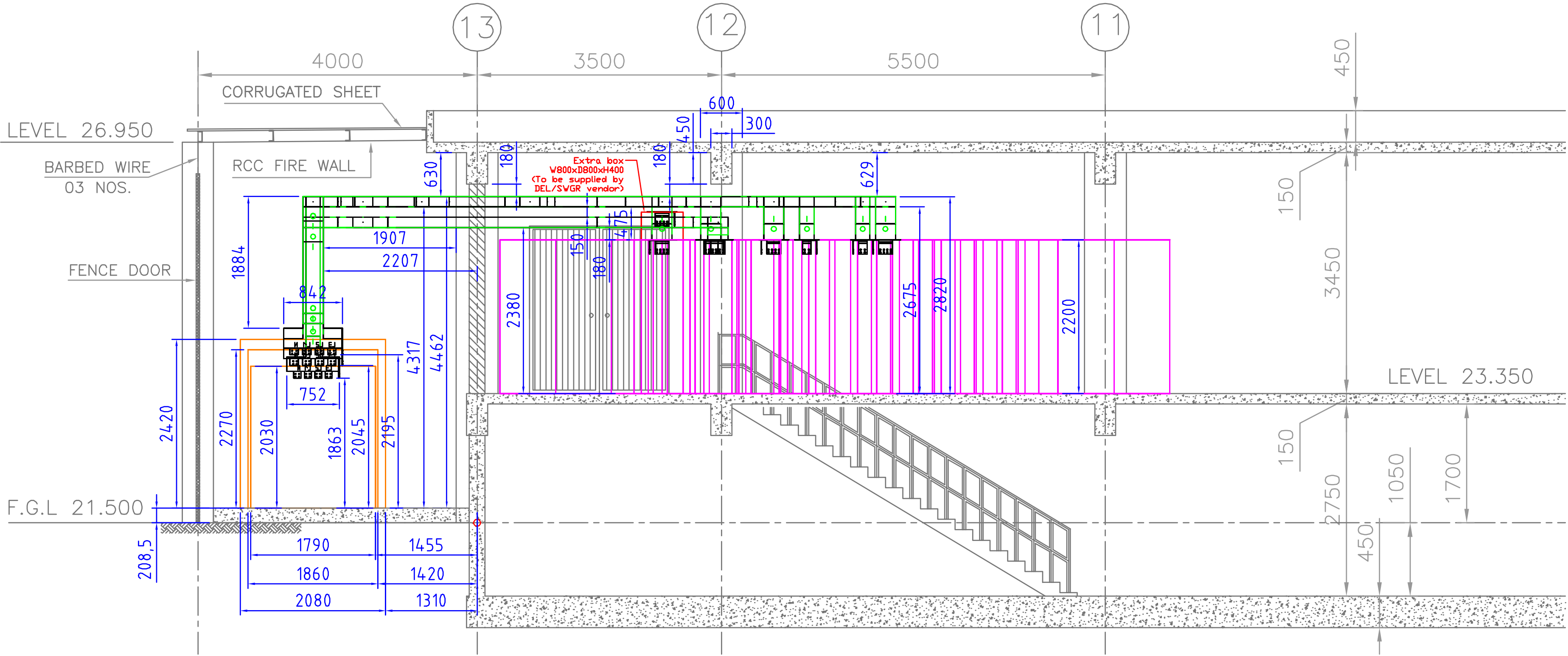


BUSDUCT LAYOUT (CCR BUILDING)

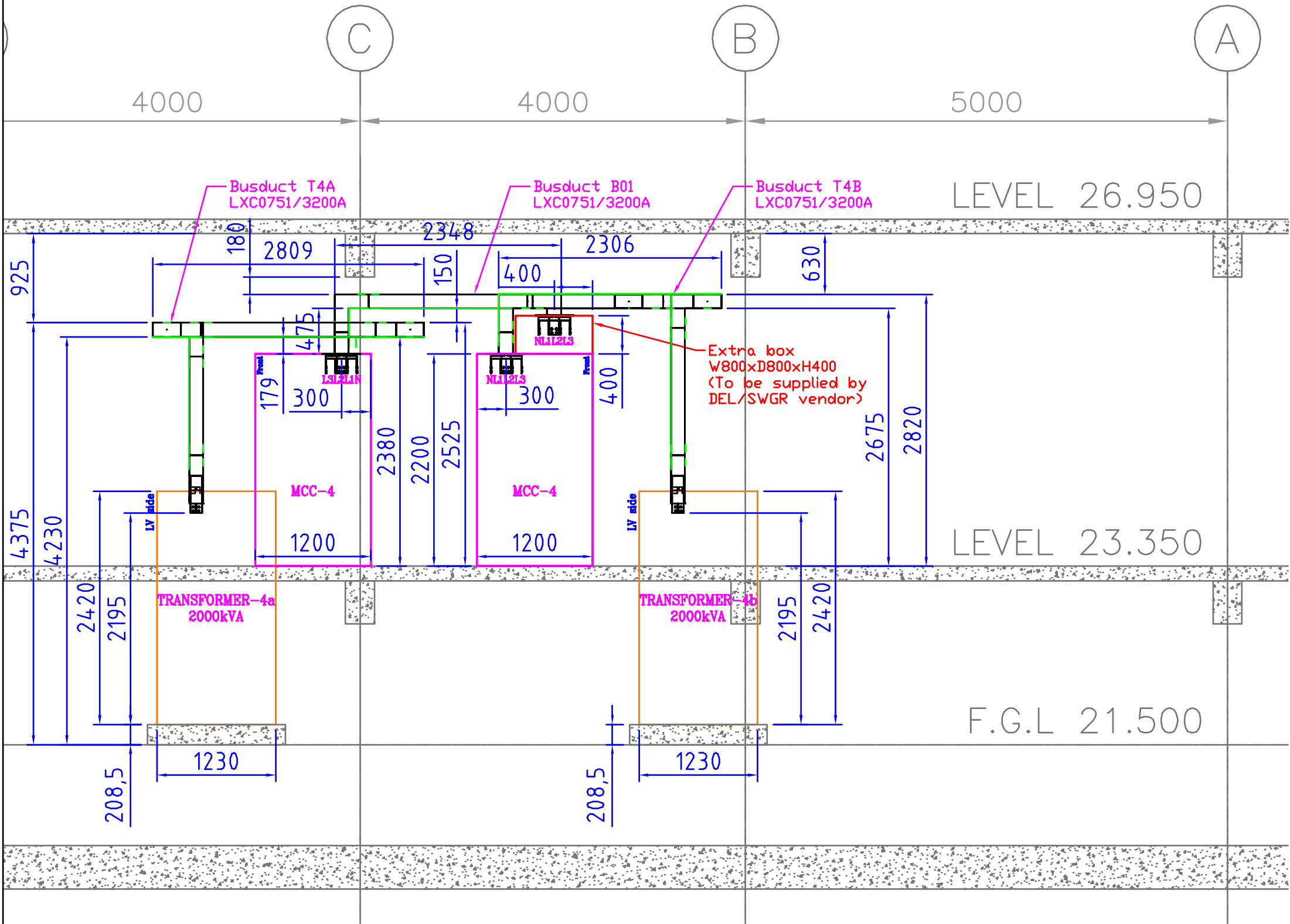
11				Scale:	Order-No.:
10				Order: A10830	File: 8PS-1376-R05.dwg
09				Date	Name
08				Engineer 07.01.2016	Van
07				Appr. 07.01.2016	Muessen
06					
05					
04					
03					
02					
01					
Index	Modification	Date	Name		

SIEMENS		Customer:	S-Pakistan
Energy Management		Dwg-No.:	8PS-1376-R05
		Sheet	2

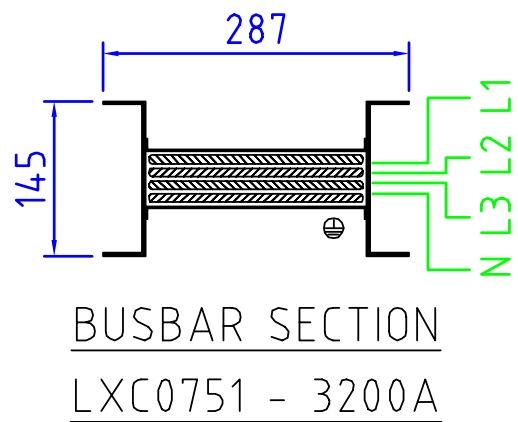
SIDE VIEW



FRONT VIEW



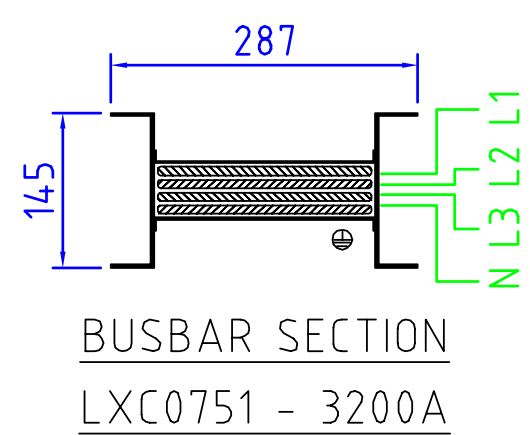
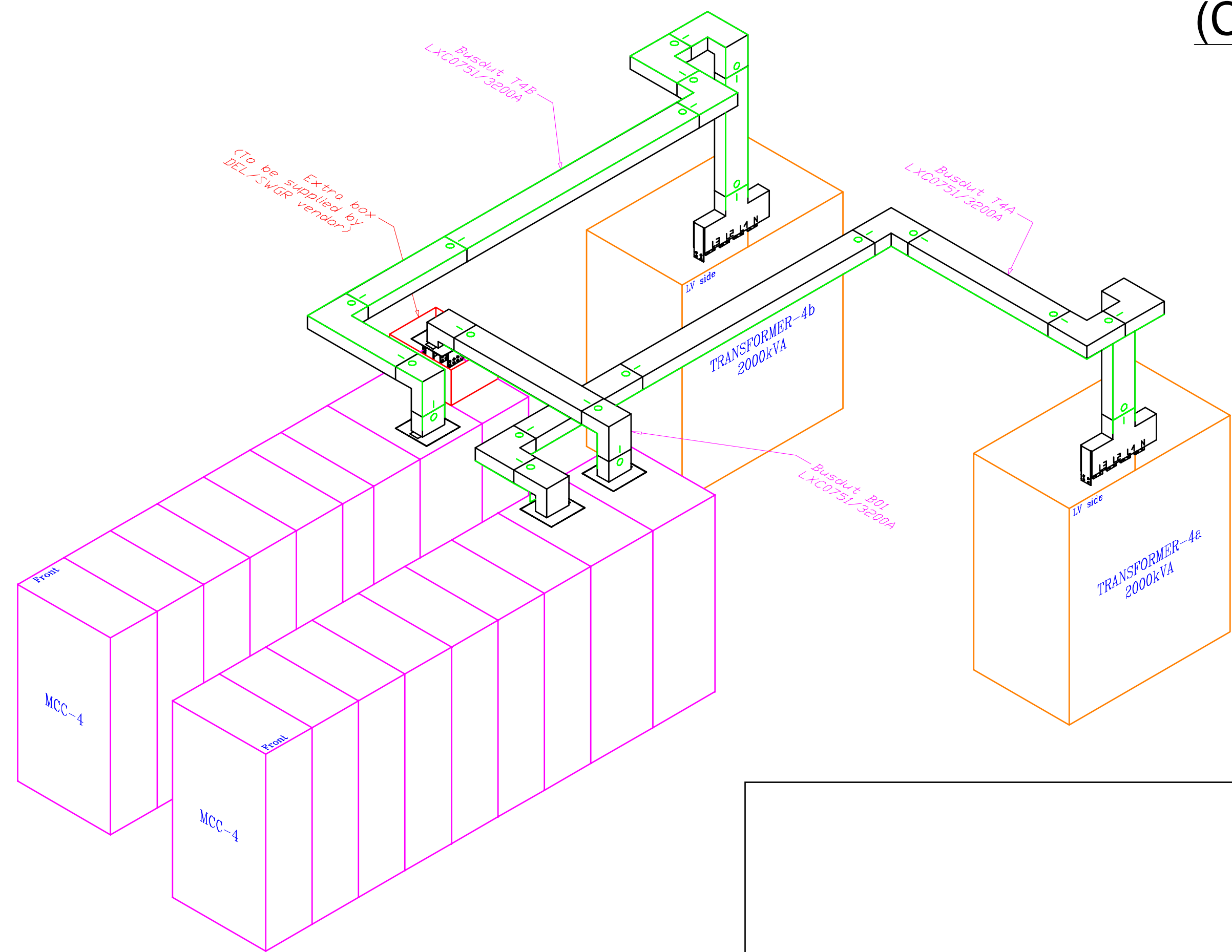
(CCR BUILDING)



BUSBAR SECTION
LXC0751 - 3200A

11				Scale:	Order-No.:
10				Order: A10830	File: 8PS-1376-R05.dwg
09				Date	Name
08				Engineer 07.01.2016	Van
07				Appr. 07.01.2016	Muessen
06					
05					
04					
03					
02					
01					
Index	Modification	Date	Name	SIEMENS Energy Management	Customer: S-Pakistan
				Dwg-No.: 8PS-1376-R05	Sheet 3

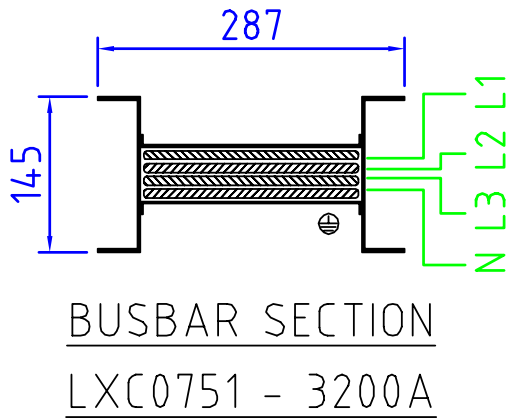
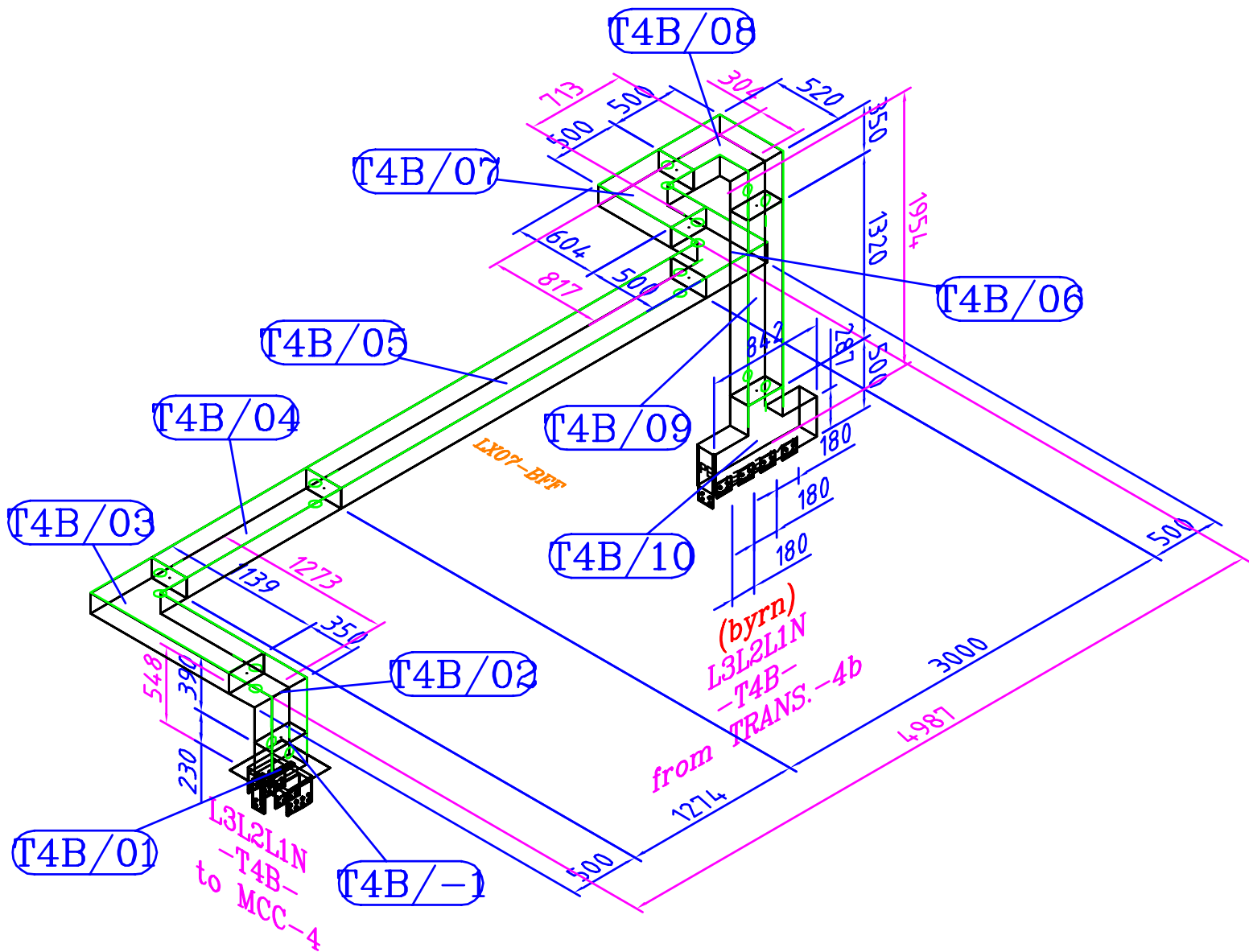
ISOMETRIC VIEW
(CCR BUILDING)



11				Scale:	Order-No.:		
10				Order:	A10830	File:	8PS-1376-R05.dwg
09					Date	Name	Project: OGDCL-Zishan
08				Engineer	07.01.2016	Van	
07				Appr.	07.01.2016	Muessen	
06							
05							Customer: S-Pakistan
04							
03							
02							
01							Dwg-No.: 8PS-1376-R05
Index	Modification	Date	Name	SIEMENS Energy Management			Sheet 4

ISOMETRIC VIEW
(CCR BUILDING)

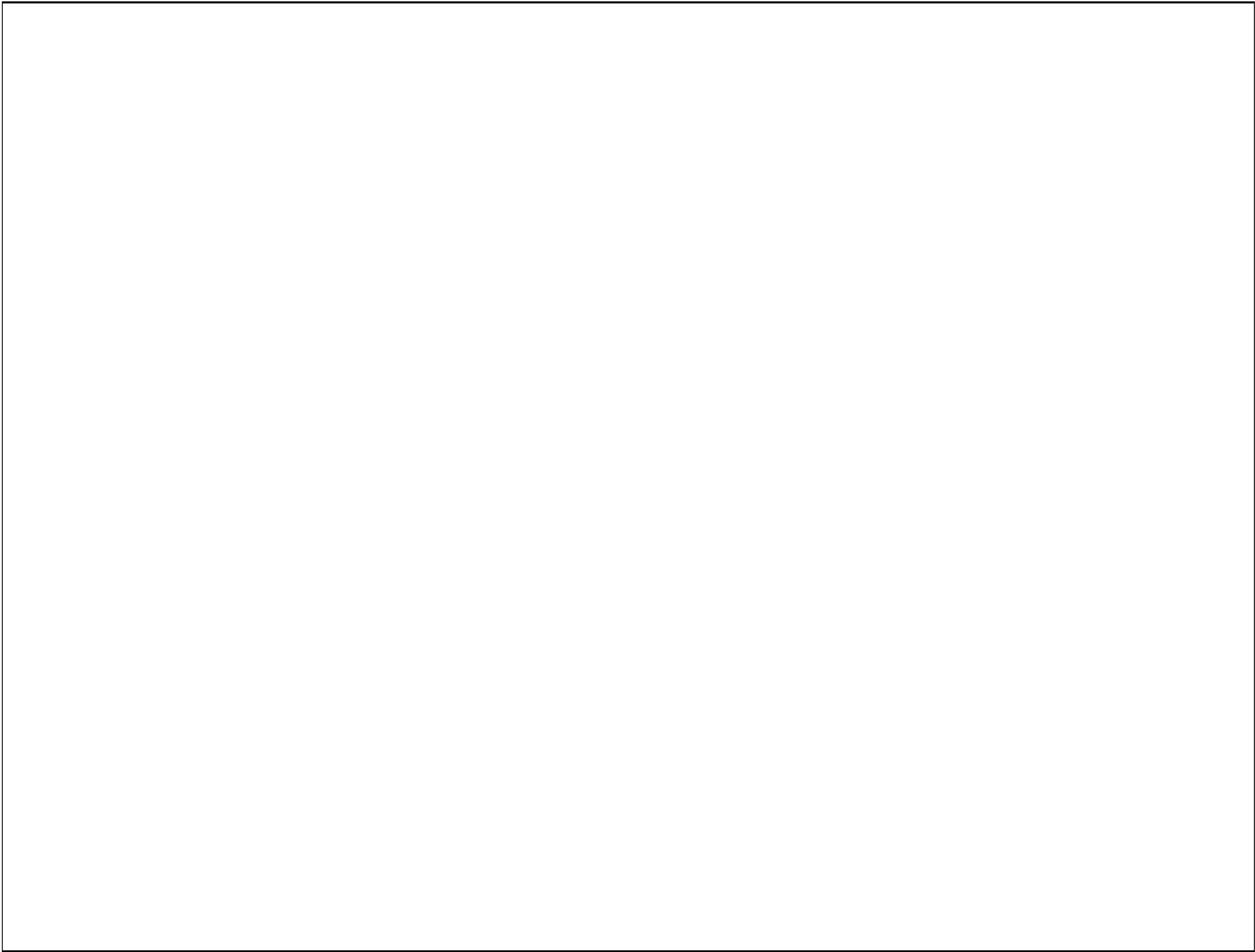
BUSDUCT T4B
LXC0751/3200A



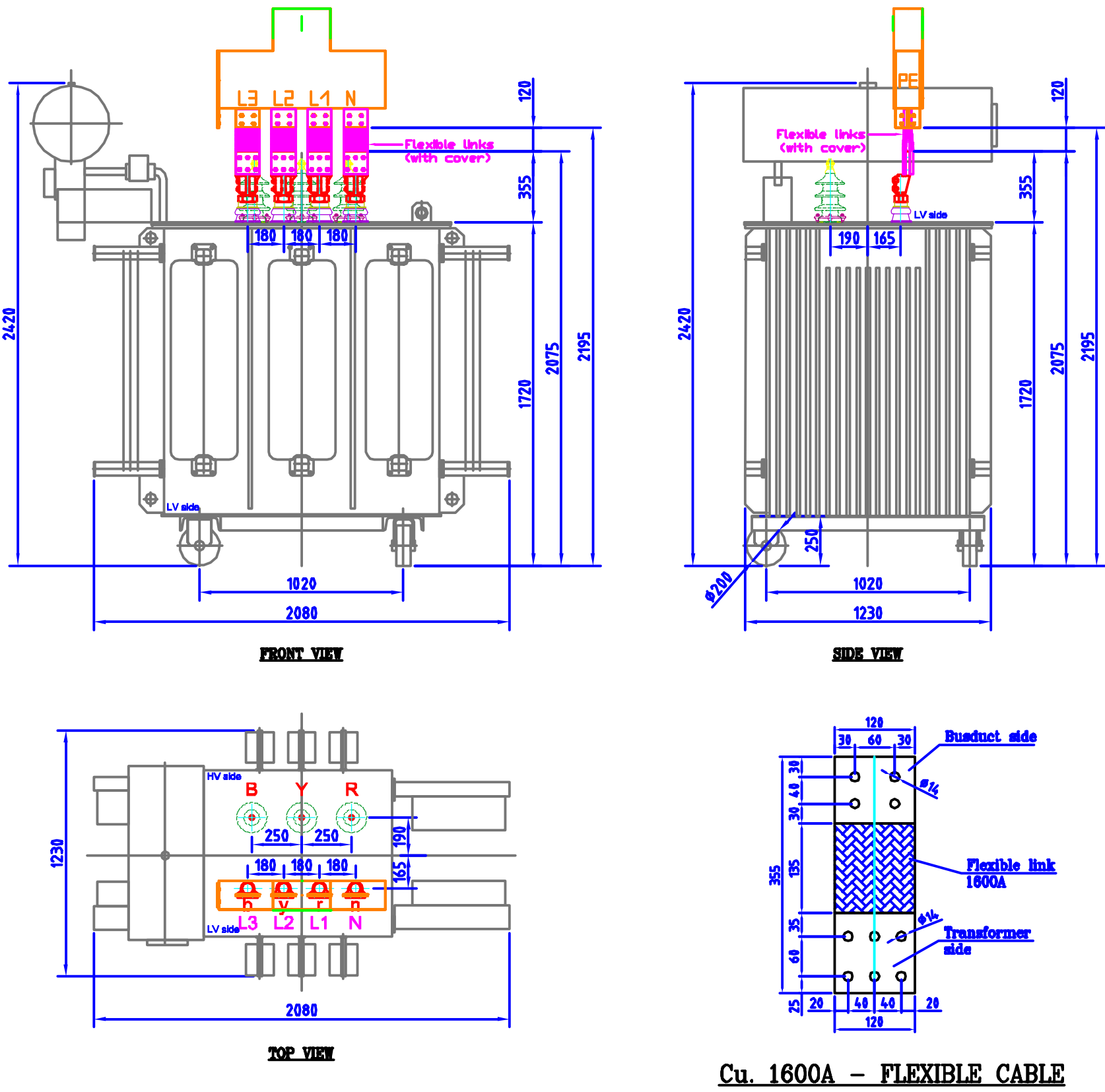
BUSBAR SECTION
LXC0751 - 3200A

11				Scale:			Order-No.:		
10				Order: A10830			File: 8PS-1376-R05.dwg		
09					Date	Name	Project: OGDCL-Zishan		
08				Engineer	07.01.2016	Van			
07				Appr.	07.01.2016	Muessen			
06									
05				<div>SIEMENS</div> <div>Energy Management</div>			Customer: S-Pakistan		
04									
03									
02									
01									
Index	Modification	Date	Name				Dwg-No.: 8PS-1376-R05		Sheet 5

TRANSFORMER CONNECTION



FOR TRANS. 2000KVA



Cu. 1600A – FLEXIBLE CABLE

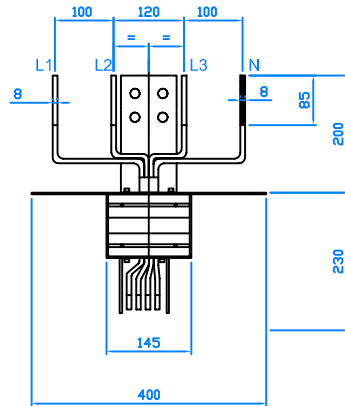
* Note:
- Tolerance for holes and distances between holes: ±0,25mm
- Tolerance for others: +2,5mm (length: +10mm)

LIST OF MATERIAL (for 01 trans. 2000kVA - 01 set)				
Item	DESCRIPTION	UNIT	QUANTITY	
			one phase	Total
1	1600A Flexible conductor	pc	2	8
2	Bolt M12x60 with 1 nut and 2 washers	set	4	16
3	Bolt M12x70 with 1 nut and 2 washers	set	4	16

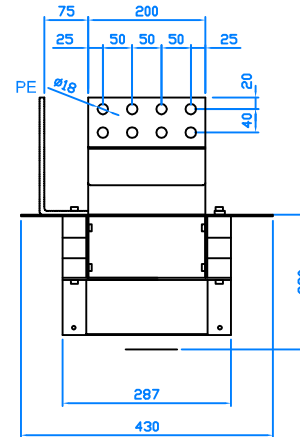
11				Scale:			Order-No.:		
10				Order: A10830			File: 8PS-1376-R05.dwg		
09					Date	Name	Project: OGDCL-Zishan		
08				Engineer	07.01.2016	Van			
07				Appr.	07.01.2016	Muessen			
06									
05				SIEMENS Energy Management			Customer: S-Pakistan		
04									
03									
02									
01									
Index	Modification	Date	Name						10

LXC0751-FA

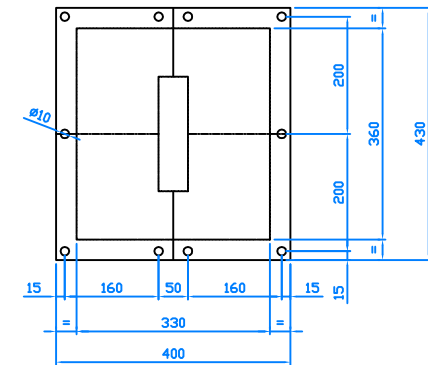
FRONT VIEW



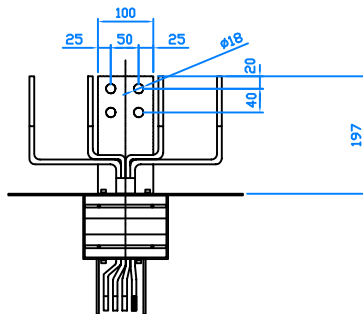
SIDE VIEW



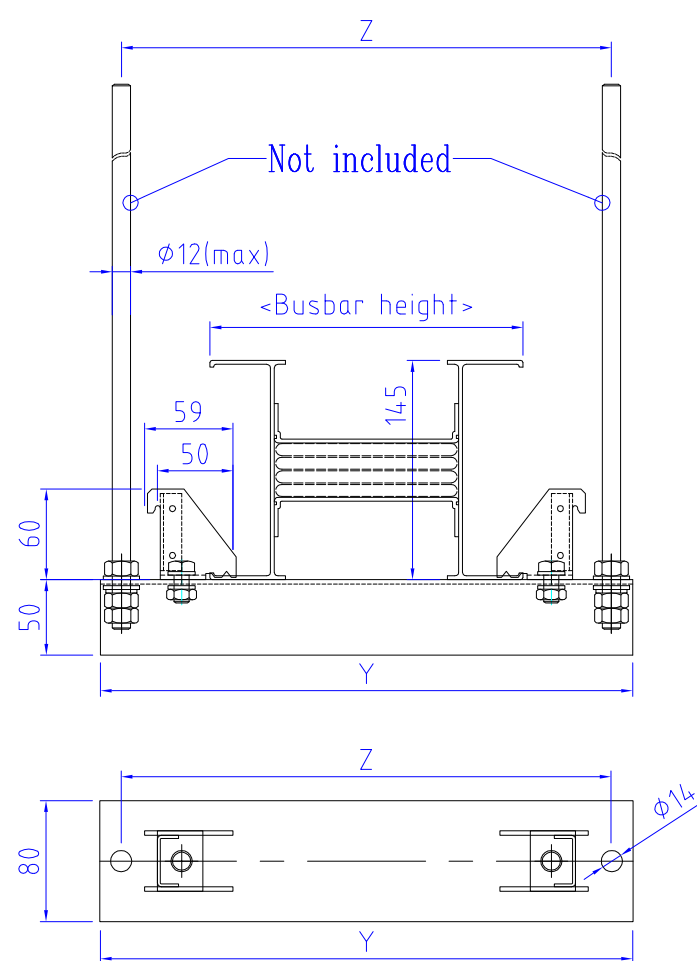
TOP VIEW



P.E PLATE



11				Scale:	Order-No.:
10				Order:	File: LX.51-FA drawing.dwg
09					Project:
08				Date	Name
07				Engineer	20/07/07 Duong
06				Appr.	
05					
04					
03					
02					
01					
Index	Modification	Date	Name	SIEMENS A&D	
				Customer:	
				Dwg-No.:	Sheet



Horizontal bracket (flat)
LX..-BFF

No.	LX Type	Busbar height	Fixing type	Y	Z	Note
1	LXA(C)01..	137	LX02-BF(F)	285	256	
2	LXA(C)02..					
3	LXA(C)03..	162	LX04-BF(F)	307	279	
4	LXA(C)04..					
5	LXA(C)05..	207	LX05-BF(F)	352	324	
6	LXA(C)06..	287	LX07-BF(F)	432	404	
7	LXA(C)07..					
8	LXA(C)08..	439	LX08-BF(F)	584	556	
9	LXA(C)08..	559	LX10-BF(F)	744	716	
10	LXA(C)10..					

- Fixing distances for horizontal busbar:

- + Max. distance between two fixing points: 2,0m.
- + Minimum distance between fixing point and center of joint block: 250mm.

11				Scale:			Order-No.:	
10				Order:			File: Accessory drawing.dwg	
09								
08					Date	Name	Project: Accessory drawing Fixing bracket for horizontal (flat)	
07				Engineer	26.11.12	Thang		
06				Appr.				
05							Customer:	
04				<div>SIEMENS</div> <div>Industry Sector</div>				
03								
02								
01								
Index	Modification	Date	Name				Dwg-No.:	Sheet
								Acc-