



**OIL & GAS DEVELOPMENT COMPANY LIMITED**  
**PROCUREMENT DEPARTMENT (LOCAL), ISLAMABAD**  
**SCHEDULE OF REQUIREMENT**

Material : **MUD TANKS**

**Due Date:**

Tender Enquiry No: **PROC/LF/PT/18520/21**

Bid Bond Value : **RS.2,700,000/-**

EVALUATION WILL BE CARRIED OUT ON FULL

Attachment(if any) : **YES**

Sr No	Description	Quantity	Make/Brand offered	Unit	Unit Price (PKR) Inclusive Of All Taxes Except GST	Unit Price (PKR) Inclusive of GST	Total Price (PKR) Inclusive of GST	Delivery Period Offered	deviation from Tender Spec. If Any
1	TANK SHAKER 35 FT. X 10 FT. X 8 FT. HIGH COMPLETE WITH 4 FT. EXTENSION TO ACCOMODATE D-SANDER PUMP (INCLUDING ACCESSORIES,INTER CONNECTIONS & FLANGES ETC.) AND COMPLETE WITH OTHER FITTINGS. IP# JASY TANKS.	1		Number					
2	TANK INTERMEDIATE 35 FT. X 10 FT. X 8 FT. HIGH COMPLETE WITH 4 FT. EXTENSION TO ACCOMODATE D-SILTER PUMP (INCLUDING ACCESSORIES,INTER CONNECTIONS & FLANGES ETC.) AND WITH OTHER FITTINGS. IP# JASY TANKS.	1		Number					
3	TANK SUCTION 35 FT. X 10 FT. X 8 FT. (INCLUDING ACCESSORIES,INTER CONNECTIONS & FLANGES ETC.) HIGH COMPLETE WITH FITTINGS. IP# JASY TANKS.	1		Number					
4	TANK RESERVE 35 FT. X 10 FT. X 8 FT. (INCLUDING ACCESSORIES,INTER CONNECTIONS & FLANGES ETC.) HIGH COMPLETE WITH FITTINGS.(WITH PARTITION) IP# JASY TANKS.	2		Number					

**Special Note:** The prospective bidders also download the master set of Tender Document

- The prospective bidders may keep in touch with OGDCL web site for downloading the clarifications/amendments (if any) issued by OGDCL.
- BID VALIDITY 180 DAYS FROM TECHNICAL BID OPENING.DELIVERY AS PER CLAUSE NO.15 OF TERMS & CONDITIONS OF SOR O I-9 STORE,ISLAMABAD. PAYMENT AFTER DELIVERY WITH PART DELIVERY PART PAYMENT.



**OIL & GAS DEVELOPMENT COMPANY LIMITED**  
**PROCUREMENT DEPARTMENT (LOCAL), ISLAMABAD**  
**SCHEDULE OF REQUIREMENT**

**Mandatory Checklist**

Please confirm the compliance of the following mandatory information along with the bid(s) (failing which bids(s) will not be accepted)

Documents	To be Attached with the Technical/Financial Bids	Compliance	
		Yes <input type="checkbox"/>	No <input type="checkbox"/>
Original Bid Bond	Technical Bid	Yes <input type="checkbox"/>	No <input type="checkbox"/>
Copy of NTN Certificate	Technical Bid	Yes <input type="checkbox"/>	No <input type="checkbox"/>
Copy of GST Certificate	Technical Bid	Yes <input type="checkbox"/>	No <input type="checkbox"/>
Confirmation that the Firm is appearing on FBR's Active Taxpayer List	Technical Bid	Yes <input type="checkbox"/>	No <input type="checkbox"/>
Duly signed and stamped <b>Annexure-A (Un-priced)</b>	Technical Bid	Yes <input type="checkbox"/>	No <input type="checkbox"/>
Duly filled, signed and stamped <b>Annexure-B</b>	Technical Bid	Yes <input type="checkbox"/>	No <input type="checkbox"/>
Duly filled, signed and stamped <b>Annexure-D</b>	Technical Bid	Yes <input type="checkbox"/>	No <input type="checkbox"/>
Duly filled, signed and stamped <b>Annexure-L</b> on Company's Letterhead	Technical Bid	Yes <input type="checkbox"/>	No <input type="checkbox"/>
Duly signed and stamped <b>Annexure-M</b> on Company's Letterhead	Technical Bid	Yes <input type="checkbox"/>	No <input type="checkbox"/>
Duly signed and stamped <b>Annexure-N</b> on Non-Judicial Stamp Paper duly attested by Notary Public	Technical Bid	Yes <input type="checkbox"/>	No <input type="checkbox"/>
Duly filled, signed and stamped <b>Annexure-A (Priced)</b>	Financial Bid	Yes <input type="checkbox"/>	No <input type="checkbox"/>
Duly filled, signed and stamped <b>Annexure-C</b>	Financial Bid	Yes <input type="checkbox"/>	No <input type="checkbox"/>
Duly filled, signed and stamped <b>Annexure-E</b>	Financial Bid	Yes <input type="checkbox"/>	No <input type="checkbox"/>



**OIL & GAS DEVELOPMENT COMPANY LIMITED**  
**PROCUREMENT DEPARTMENT (LOCAL), ISLAMABAD**  
**SCHEDULE OF REQUIREMENT**

For the Vendors/Contractors who opt to submit Bank Draft/Call Deposit/Pay order against Bid Bond/Performance Bond, our Accounts Department has finalized an arrangement for online payment to such Vendors/Contractors, which will be processed through (IBFT & LFT) for which following information is required:

i.	IBAN No. (International Bank Account Number 24 Digits)	
ii.	Vendor Name as per Title of their Bank Account	
iii.	Contact No.of Company's CEO/ Owner (Mobile & Landline)	
iv.	Bank Name.	
v.	Bank Branch Name and Code	

Name, Sign and Stamp of the authorized official of the Bidder(s) \_\_\_\_\_



62

## Oil & Gas Development Company Limited

### Fabrication of 01 set (05 units) of Mud Tanks for Rig N-3.

#### Terms & Conditions for Bidders

1. Bids from manufacturers only will be accepted.
2. Bidder to have at least 10-year manufacturing experience of similar tanks (for water storage, fuel storage, chemical storage, mud storage etc.). Documentary proof in this regard must be provided with the technical bid.
3. If the bidder has not supplied such mud tanks to OGDCL in the past, then bidder to provide sale record for the last 05 years with contact details of clients e.g. postal and e-mail address, phone and fax number.
4. The new mud tanks are required to replace the existing ones at OGDCL Rig N-3 and to be supplied complete with the following accessories and arrangements.
  - i. Placed on oilfield skids as per existing I-beams / H-beams (height 12", width 6", thickness ½"), channels, angel irons (thickness of bottom sheets is 10 mm, thickness of sides/ wall sheets is 08 mm).
  - ii. Lifting arrangement on both ends of skids for loading and unloading with crane as per existing arrangement / material.
  - iii. Arrangement for placing agitators and other solid control equipment including 03 shale shakers on tanks by providing foundations of I-beam/H-beam (6" x 6" x ½").
  - iv. Mud flow line as per existing arrangement / material.
  - v. Mud line (6" ID) /water supply lines (4" ID) with provision of flanges for butterfly valve as per existing arrangement / material.
  - vi. Fixtures for mud gun lines (ID 3") and pedestal for agitators as per existing arrangement.
  - vii. Top grating as per existing arrangement (strip thickness 8mm, width 12 mm, 1" gap b/w strips).
  - viii. 04 No. Stairs for access from ground to top of tanks as per existing arrangement / material or mutual consent.
  - ix. Stairs for access to bottom of tanks for cleaning and maintenance of tanks interior using MS round bars (1" dia) as per existing arrangement.
  - x. Walk ways around mud tanks with safety hand rails and toe boards on all open sides as per existing arrangement / material.
  - xi. Standard arrangements for connection of mud pumps' suction (Pipe ID 12") with provision of flanges for 12" butterfly valves, tanks internal connection using pipes (ID 12") with bridge valves (12"), equalizer mechanism using pipes (ID 8") as per existing arrangement /material.
  - xii. Kemper hammer union seal type couplings for interconnection of tanks instead of existing sleeve coupling.

(61)



## Oil & Gas Development Company Limited

- xiii. Suitable arrangement for cleaning and draining/ flushing of tanks. 02 cleanout holes with each tank or as per mutual consent.
  - xiv. All outlet connections for suction, drainage/cleaning, shifting of mud from one tank to other must be provided with the provision of flanges to install butterfly valves as per existing tanks or as per mutual consent.
  - xv. Provision of cable trays as per existing arrangement / material.
5. New mud tanks are required for OGDCL Rig N-3. It is pertinent to mention that mud tanks at OGDCL Rig N-1, N-2, N-3, N-4 are same in design and dimensions and drawings (08 pages) of existing tanks for one rig are attached. Bidders are, however, encouraged to visit any of the aforementioned rigs at their own expense to examine the already installed skid mounted mud tanks and allied accessories for having complete picture and information about design, size, dimensions, specifications and accessories like various types of valves, holes, flow lines, gun lines, water lines, flanges, manifolds etc. which may be helpful in estimation of scope of work for preparation of bid proposal. Bidders can contact OGDCL Rig Maintenance Department, OGDCL H.O, Islamabad for convenience and selection of Rig for visit.
  6. Qualified bidder will have to provide detailed working drawings for approval of OGDCL after issuance of Letter of Intent (LOI) and required tanks are to be fabricated and supplied as per OGDCL approved drawings.
  7. OGDCL, as per its own requirement, will have the right to suggest minor changes as per operational requirement (if required) in drawings of the qualified bidder. Such changes to be duly approved by OGDCL.
  8. Bidder to provide following certificates with the technical bid.
    - a. Audited financial statements for last 03 years.
    - b. Applicable ISO or NQA certificate.
    - c. Registration with Pakistan Engineering Council (PEC) in category (C-1).
    - d. Registration with FBR for Income Tax.
    - e. Registration with FBR for Sales Tax.
    - f. Registration with local Govt. for Professional Tax.
    - g. Minimum experience of manufacturing 30 Nos. Tanks (for water storage, fuel storage, chemical storage, mud storage etc.) is required.
  9. A team of OGDCL comprising on two professionals shall pay four visits for inspection of the material/ under construction tanks at manufacturing site/work shop of the qualified bidder as mentioned below. Date and venue for these inspections at each stage to be intimated by the supplier at least three days in advance and when the material/ structures is/ are ready for the intended inspection(s).
    - a. **Stage -1:** To inspect the material of tank structures prior to starting fabrication activity

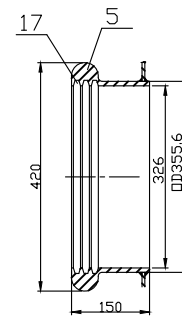
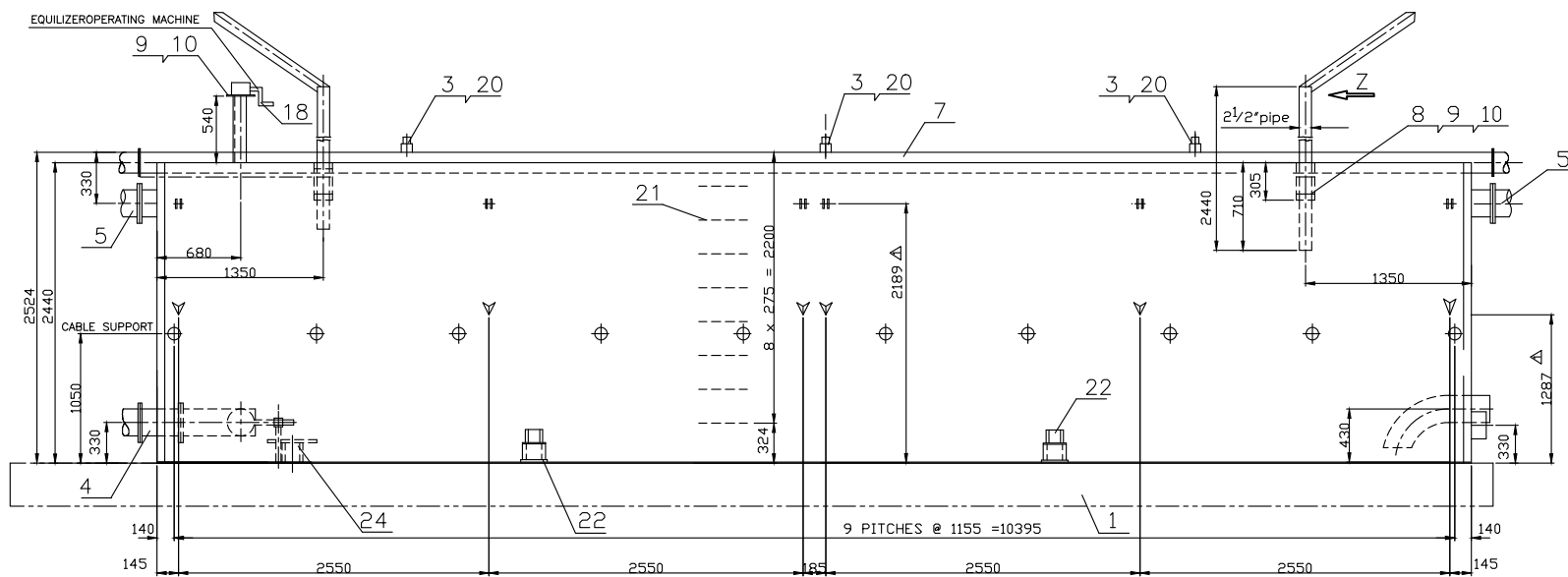
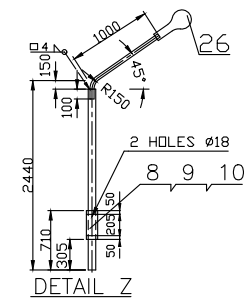
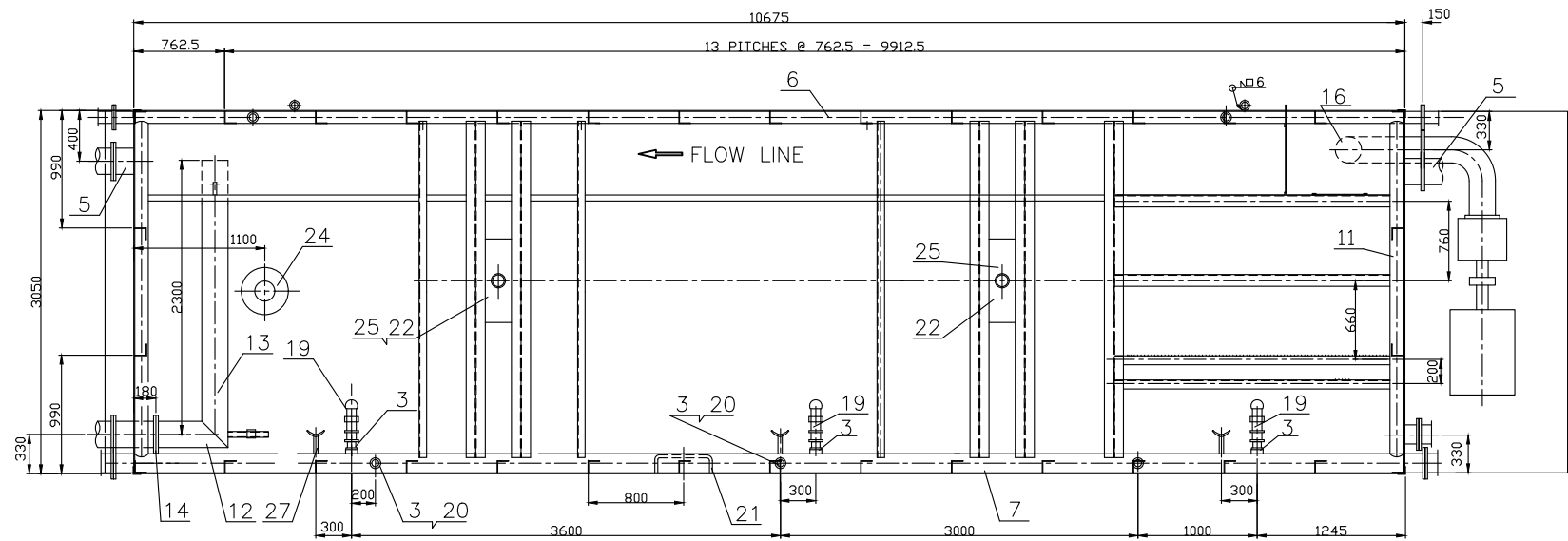
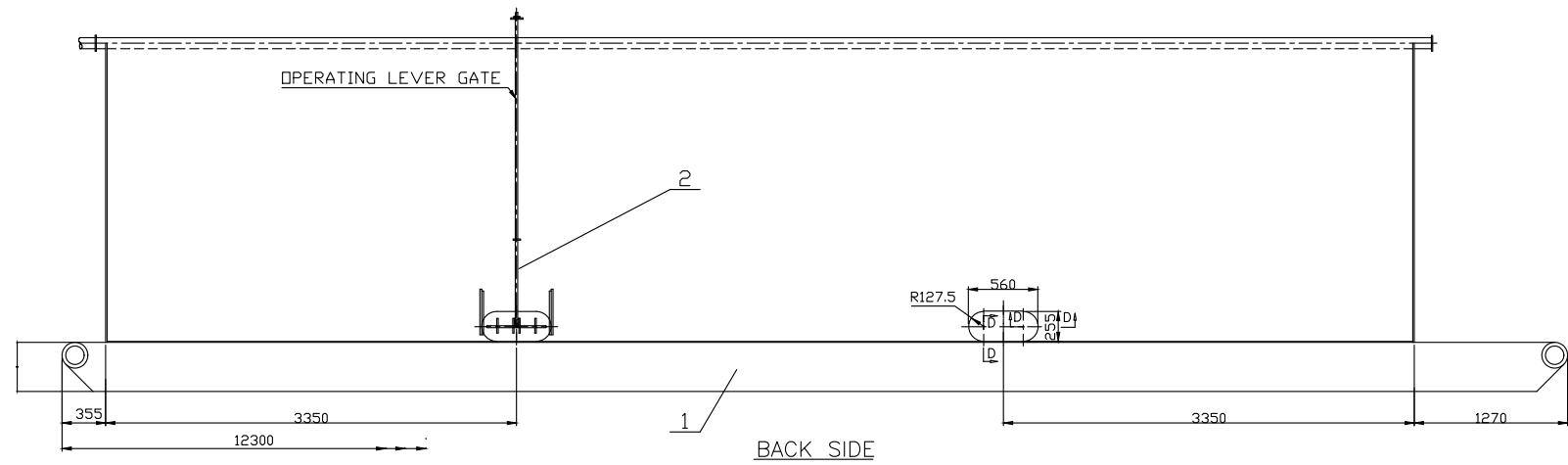
## Oil & Gas Development Company Limited

---

- b. **Stage-2:** To inspect the fabricated base structures of mud tanks.
  - c. **Stage-3:** To inspect the completed mud tank structures & hydrostatic Test procedure.
  - d. **Stage-4:** To inspect anti-corrosion painting process of the inner & outer walls of mud tanks and allied accessories.
10. The following grades are required to be selected for each type of material to be used in fabrication. The grades selected may be according to the length, thickness, quantity (pieces in Kg) and diameter of the materials.
- a. Metallic Sheets/ Plates should be M.S Sheets A-36 grade / SS-400.
  - b. H-Beams, I/Beams/ Channels/ Angle Irons should be A-36 grade / SS-400.
  - c. Pipes of A-106B (SCH 40) should be used.
  - d. Rods having A-36 grade should be used
11. Bidders are required to submit along with the technical bid a list of material with specifications (grade, gauge, schedule, weight, quantity etc.) required for fabrication of mud tanks.
12. Bidders are required to submit detailed procedure of anti-corrosion paint (primary & final coating) elaborating sand blasting for first cleaning and 03 coats of epoxy paint for anti-corrosion/ rusting treatment of inside and outer surface of the tanks before final painting.
13. Leak test (hydrostatic test) of all mud tanks will have to be conducted by the supplier before delivery and witnessed by OGDCL inspectors. Test reports will have to be submitted by the bidder for examination and acceptance of OGDCL. OGDCL will only accept those tanks that qualify the test.
14. Delivery Location: OGDCL Base Stores, I-9, Islamabad.
15. Delivery Period: 06 months after *issuance* of Purchase Order (P.O)

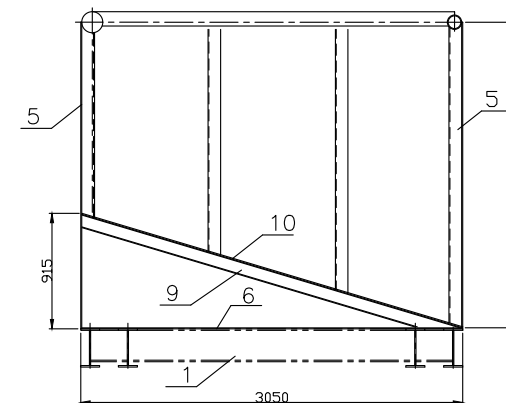
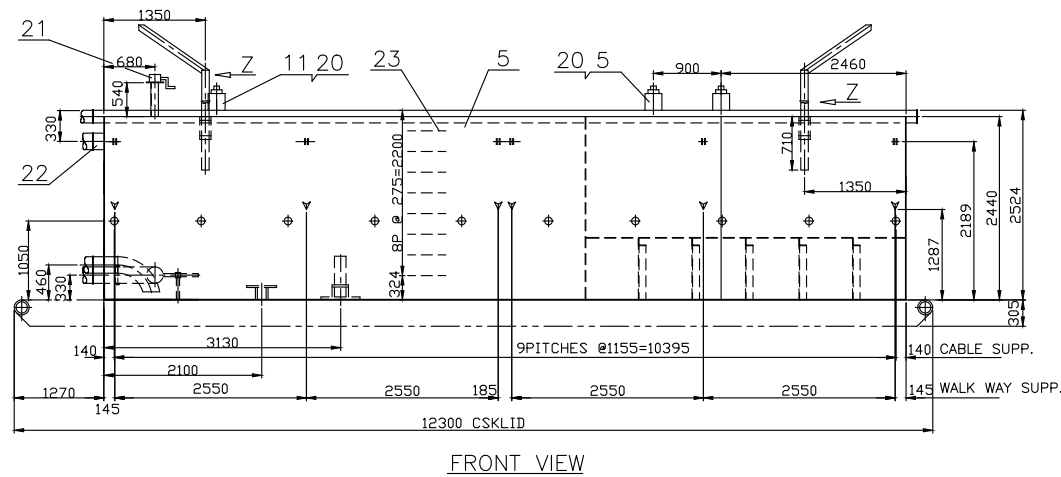
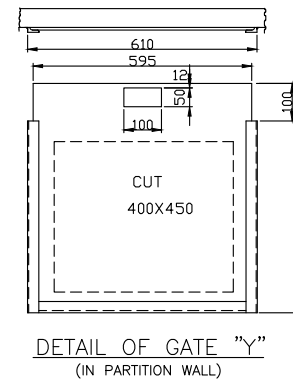
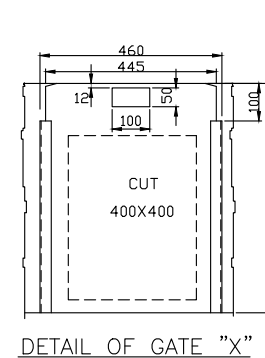
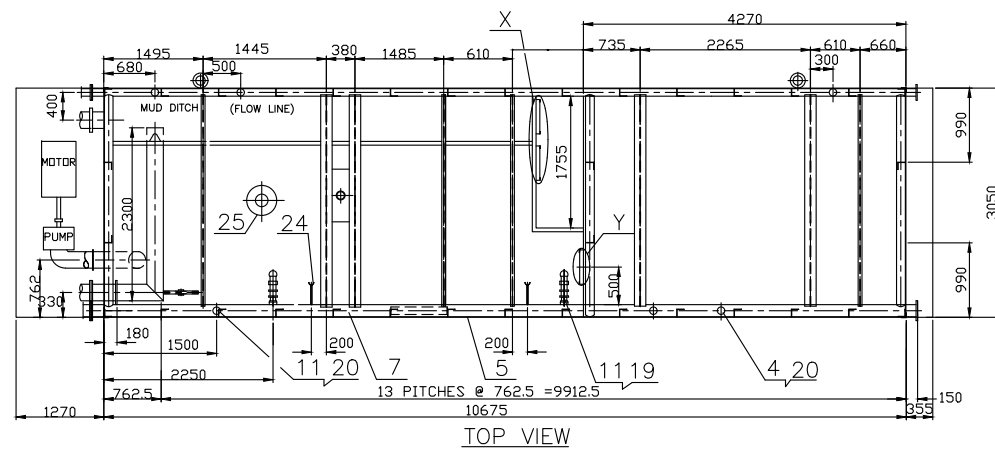
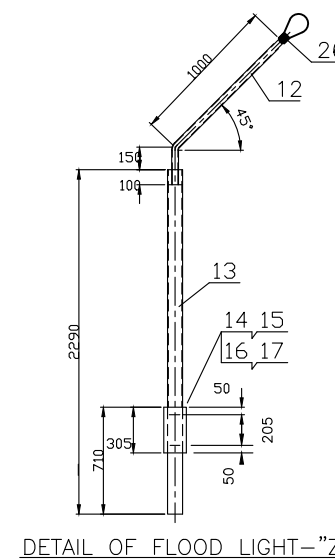
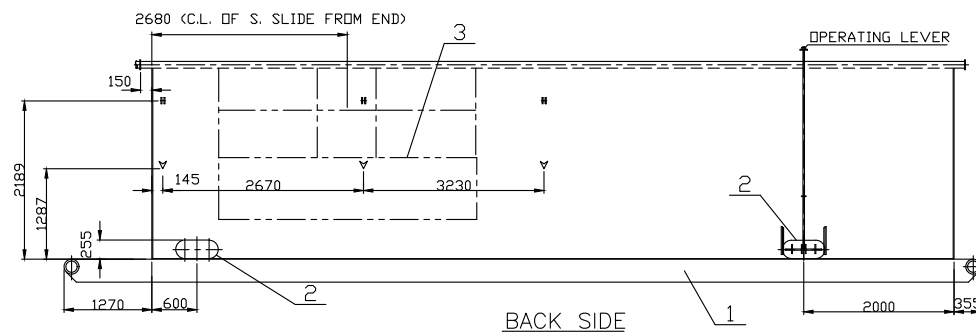
**Note:**

Above terms and conditions are integral part of OGDCL tender enquiry and a copy of the same duly signed and stamped by the bidder's authorized person must be provided with the technical bid in token of acceptance.



29	RUBB. SEAL 3 THK A/P IT. NO. 58	4		RUBBER
28	FLANGE OD 210, ID 90, 20 THK	4		ST37-2 OR EQ.
27	PIPE NIPPLE NPS 3", L=120	2	1 END THREADED 50 MM, SCH 80	A106-B
26	200 WATT MERCURY FLOOD LIGHT	2	COMPLETE SET WEATHER PROOF	-
25	FRAME	2		-
24	VOLUME RETAINER	1		-
23	GUIDE	3		-
22	PEDESTAL FOR AGITATOR	2		-
21	ROD Ø25X772	8		ST37-2 OR EQ.
20	PLUG KG 3"	3		-
19	LP BOTTOM MUD GUN LINE FITTING	3		ST37-2 OR EQ.
18	EQUILIZING MECHANISM	1		-
17	O SEAL Ø346X12	6		RUBBER
16	EQUILIZING PIPE NPS 8" L=330	1	SCH. 40	A106-B
15	EQUILIZING PIPE NPS 8" L=166	1		A106-B
14	JOINT	1		-
13	EQUILIZING PIPE NPS 8" L=2410	1	SCH. 40	A106-B
12	EQUILIZING PIPE NPS 8" L=605	1	SCH. 40	A106-B
11	WATER LINE NPS 4" PIPE L=2910	2	SCH. 40	A106-B
10	WASHER 12	14	DIN 127	ST37-2 OR EQ.
9	NUT M12	14	DIN 555	5.6
8	BOLT M12X95	14	DIN 601	5.6
7	MUD GUN LINE NPS 6" PIPE L=10975	1	SCH. 40	A106-B
6	WATER LINE NPS 4" PIPE, L=10975	1	SCH. 40	A106-B
5	MUD DITCH COLLECTING PIPE ØD355.6	2		ST37-2 OR EQ.
4	EQUILIZING PIPE Ø8" SCH:40 L=330	1	SCH. 40	A106-B
3	MUD GUNLINE COUPLING Ø125X70 KG3"	6		
2	LEVER OPERATING CLEAN OUT GATE	2		ST37-2 OR EQ.
1	SKID	1		ST37-2 OR EQ.
P			DRG. NO.	MAT.
NO.	DESCRIPTION	QTY	STD. NO.	
REV	DESCRIPTION	DATE	BY	MOD. NOTE
APPROVED	CUSTOMER/PROJECT:			
CHECKED	DIL AND GAS DEVELOPMENT COMPANY LTD.			
DRAWN				
WT. (KGS)	TITLE:-			SECTION:-
SCALE	DETAIL OF			LOG #:-
EQPT. NO.	MUD INTERMEDIATE TANK			
PRJ.CODE	DRAWING NO.			REV.NO./SHT.NO.
DATE				
FILENAME				
COMP.NO.				

**HMC** HEAVY MECHANICAL COMPLEX TAXILA

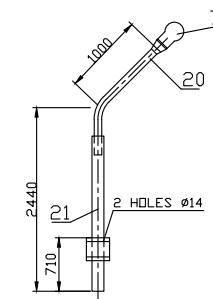
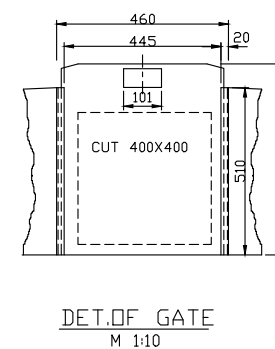
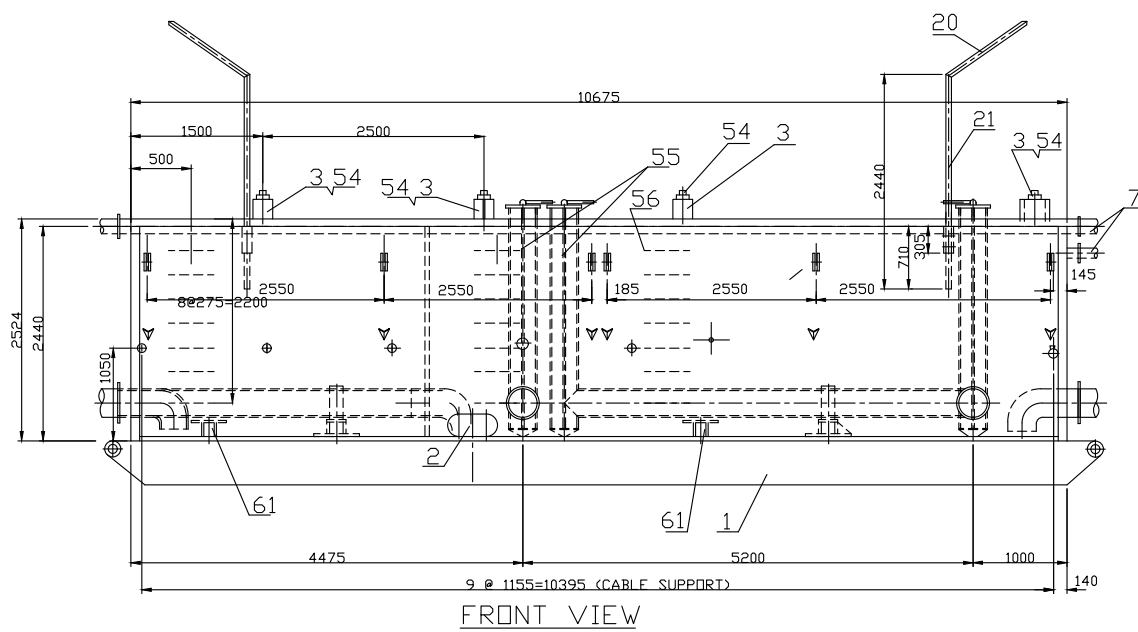
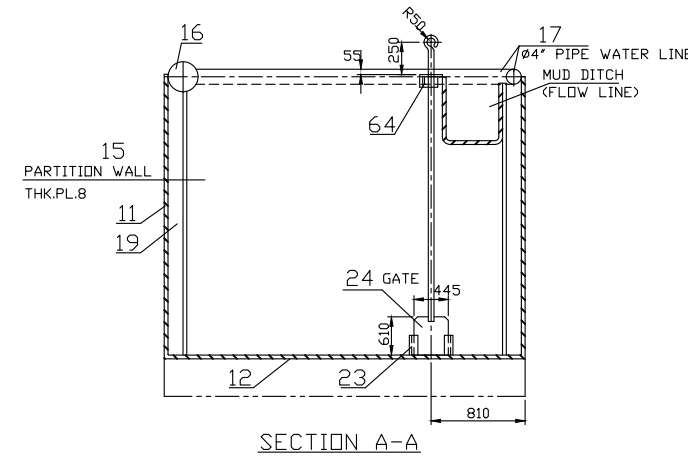
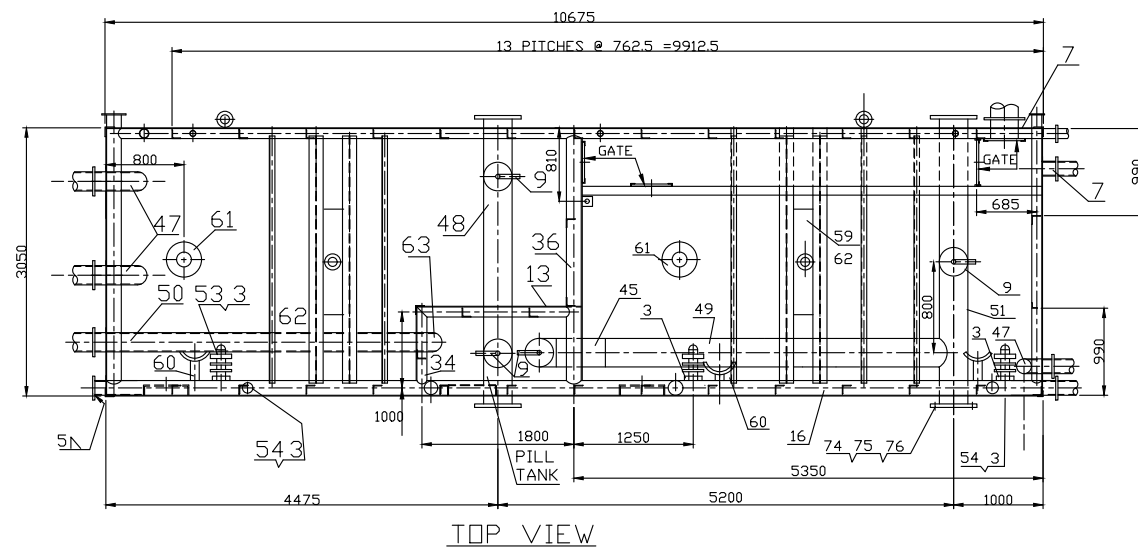
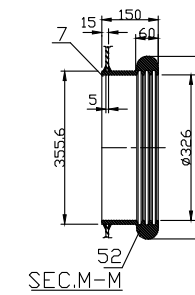
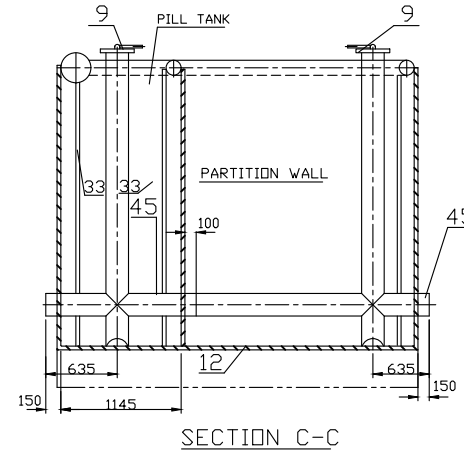
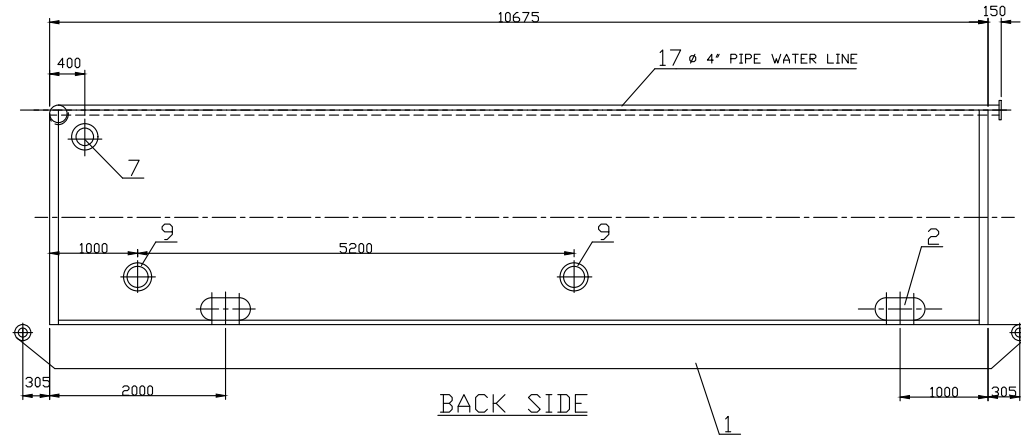


26	200 WATTS MERCURY FLOOD WATER PROOF LIGHT	2SETS		
25	VOLUME RETAINER	1		
24	GUIDE	2		
23	ROD $\phi$	8		ST37-2 OR EQ.
22	JOINT	1		
21	EQUALIZER OPERATING MACHINE	1		
20	PLUG KG 3"	3		ST37-2 OR EQ.
19	3" MUD GUN LINE FITTINGS	2		
18	EQUALIZER LINE PIPE $\phi$ 8"	1	SCH.40	A106-B
17	WASHER $\phi$ 12	18		STEEL
16	NUT M12	18	DIN 555	5.6
15	BOLT M12	14	DIN 601	5.6
14	PIPE NPS 2 1/2"	2	SCH.40	A53-B
13	PIPE NPS 2"	2	SCH.40	A53-B
12	PIPE NPS 1 1/2"	2	SCH.40	A53-B
11	L.P. BOTTOM GUN LINE COUPLING $\phi$ 125x70	2	KG3"	ST37-2 OR EQ.
10	PLATE 8 Thk.	1		ST37-2 OR EQ.
9	I 102x102x8	5		ST37-2 OR EQ.
8	MUD DITCH LINE CONNECTION PIPE	1	SCH.40	A106 B
7	PIPE NPS 6 MUD GUN LINE	1	SCH.40	A106-B
6	PLATE 8 Thk.			ST37-2 OR EQ.
5	PLATE 8 Thk.	2		ST37-2 OR EQ.
4	L.P. TOP GUN LINE COUPLING $\phi$ 150x70	3	KG3"	ST37-2 OR EQ.
3	SHALE SLIDES	1		
2	LEVER OPERATED CLEANOUT GATE	2		ST37-2 OR EQ.
1	SKID	1		ST37-2 OR EQ.
P	DESCRIPTION	QTY	DRG. NO.	MAT.
NO.			STD. NO.	

REV.	DESCRIPTION	DATE	BY	MOD.	NOTE
APPROVED	CUSTOMER/PROJECT:				
CHECKED	DIL AND GAS DEVELOPMENT COMPANY LTD.				
DRAWN					
WT. (KGS)	TITLE:-				SECTION:-
SCALE	DETAIL OF MUD SHAKER TANK				LOG #:-
EQPT. NO.					
PRJ.CODE					
DATE	DRAWING NO.				REV.NO./SHT.NO.
FILENAME					
COMP.NO.					

**HMC** HEAVY MECHANICAL COMPLEX TAXILA





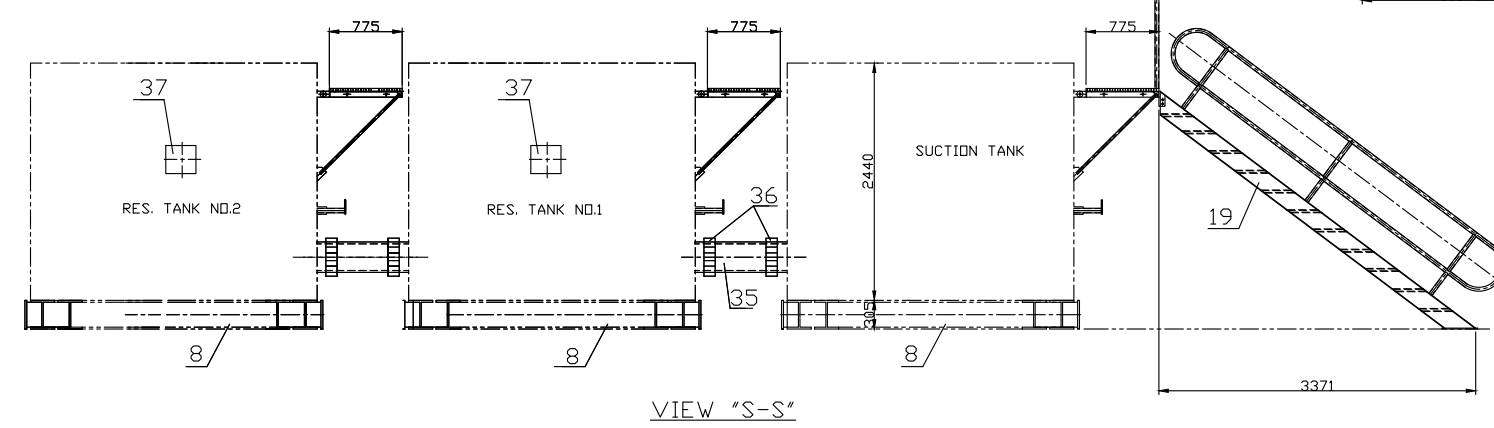
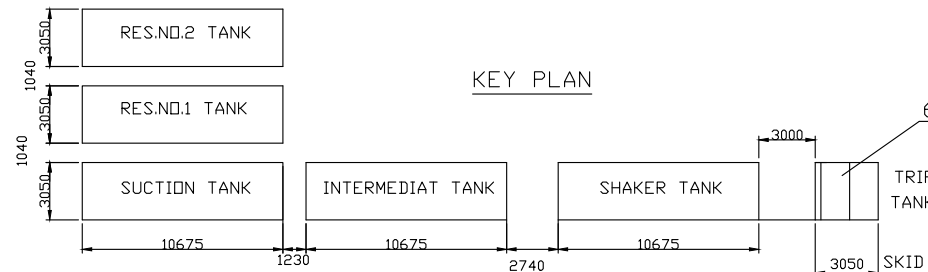
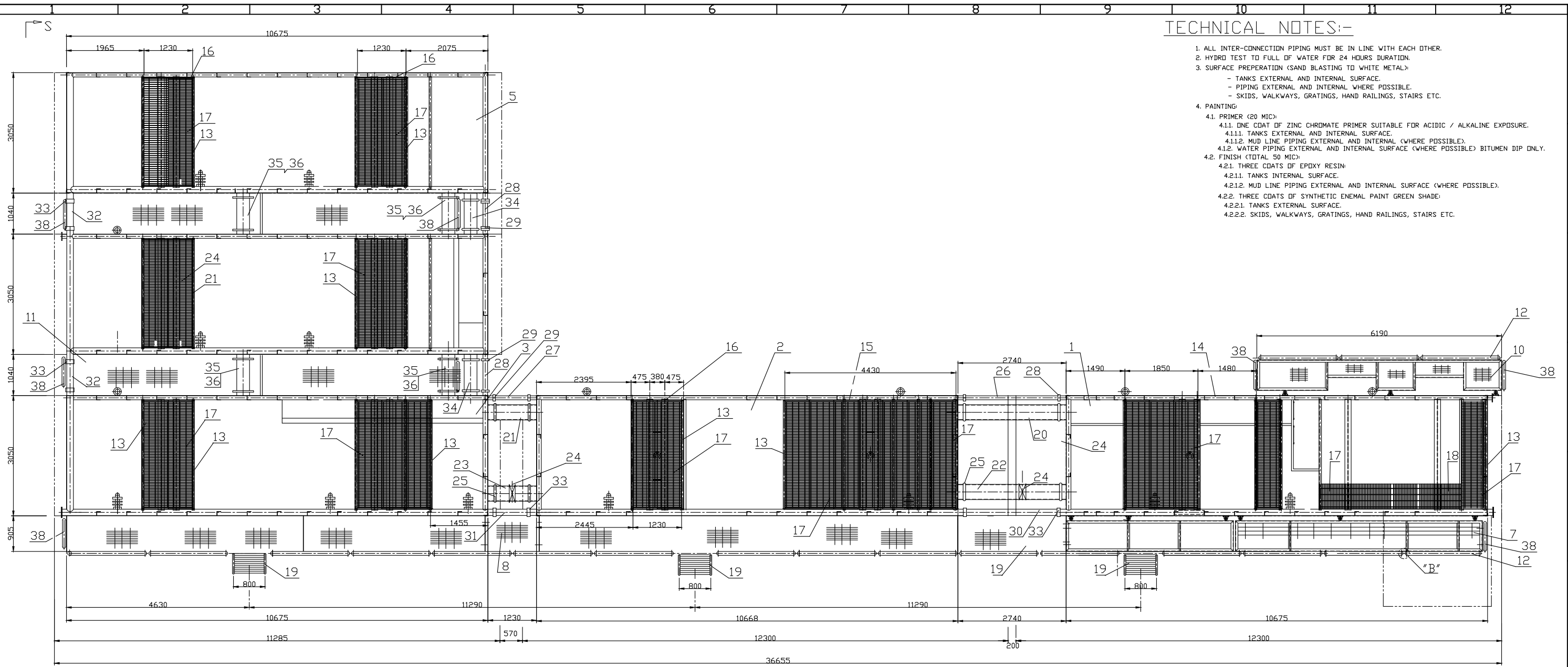
70	200 WATT MERCURY FLOOD LIGHT	2		
64	BDLT M12X35	2	DIN 601	5.6
63	90 * LR ELBOW NPS 8"	4	SCH 40	A234-WFB
62	FRAME	2		--
61	VOLUME RETAINER	2		--
60	GUIDE	2		--
59	PEDESTAL FOR AGITATOR	2		--
56	ROD $\phi$ 25 L=772	24		ST37-2 DR ED
55	SUCTION VALVE INNER ASSY.	4		--
54	PLUG KG 3"	4		ST37-2 DR ED
53	3" MUD GUN LINE FITTING	3		--
52	O SEAL $\phi$ 345X12	6	HG4-333-66	RUBBER
51	SUC.SYSTEM LINE PIPE ND12"L=3350	1	SCH 40	A106-B
50	EQUALIZING PIPE ND8" L=3675	1	SCH 40	A106-B
49	SUC.SYSTEM LINE PIPE ND12"L=4131	1	SCH 40	A106-B
48	SUC.SYSTEM LINE 12" L=2080	1	SCH 40	A106-B
47	EQUALIZING PIPE ND8" L=330	3	SCH 40	A106-B
45	SUC.SYSTEM LINE ND12" L=635	3	SCH 40	A106-B
44	O SEAL OD350X $\phi$ 8.6	4	HG4-333-66	RUBBER
21	PIPE NPS 2" L=2290	2	SCH 40	A53-B
20	PIPE NPS 1 1/2" L=1250	2	SCH 40	A53-B
9	PIPE $\phi$ 12" SCH 40 L=2550	4		A106-B
7	MUD DITCH LINE CONNECTION	2		--
4	LP TOP GUN LINE COUPLING $\phi$ 150X70	1	KG *4 WITH PLUG	ST37-2 DR ED
3	LP BOTTOM GUN LINE COUPLING $\phi$ 150X70	7	KG *3	ST37-2 DR ED
2	LEVER OPERATED CLEAN OUT GATE	3		--
1	SKID	1		--

REV.	DESCRIPTION	QTY	DRG.NO./STD	MAT
APPROVED	CUSTOMER/PROJECT:			
CHECKED	DIL AND GAS DEVELOPMENT COMPANY LTD.			
DRAWN				
WT. (KGS)	TITLE:-			SECTION:-
SCALE	DETAIL OF MUD SUCTION TANK			LOG #-
EQPT. NO.	DRAWING NO.			REV.NO./SHT.NO.
PRJ.CODE				
DATE				
FILENAME				
COMP.NO.				

**HMC** HEAVY MECHANICAL COMPLEX TAXILA

TECHNICAL NOTES:-

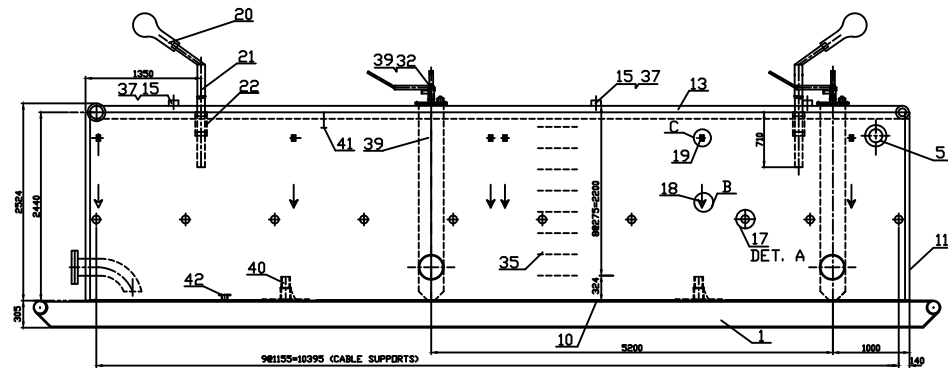
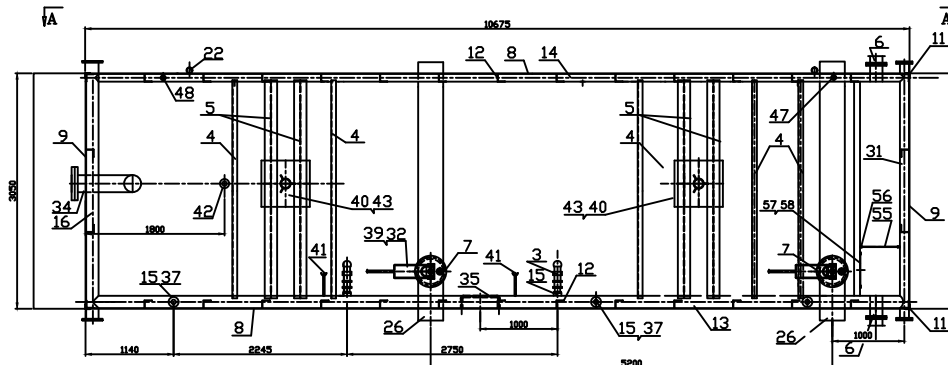
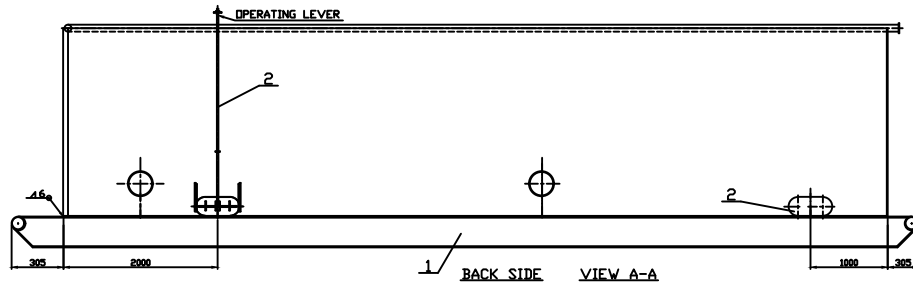
1. ALL INTER-CONNECTION PIPING MUST BE IN LINE WITH EACH OTHER.
2. HYDRO TEST TO FULL OF WATER FOR 24 HOURS DURATION.
3. SURFACE PREPERATION (SAND BLASTING TO WHITE METAL)
  - TANKS EXTERNAL AND INTERNAL SURFACE.
  - PIPING EXTERNAL AND INTERNAL WHERE POSSIBLE.
  - SKIDS, WALKWAYS, GRATINGS, HAND RAILINGS, STAIRS ETC.
4. PAINTING:
  - 4.1. PRIMER (20 MIC)
    - 4.1.1. ONE COAT OF ZINC CHROMATE PRIMER SUITABLE FOR ACIDIC / ALKALINE EXPOSURE.
    - 4.1.1.1. TANKS EXTERNAL AND INTERNAL SURFACE.
    - 4.1.1.2. MUD LINE PIPING EXTERNAL AND INTERNAL (WHERE POSSIBLE).
  - 4.1.2. WATER PIPING EXTERNAL AND INTERNAL SURFACE (WHERE POSSIBLE) BITUMEN DIP ONLY.
- 4.2. FINISH (TOTAL 50 MIC)
  - 4.2.1. THREE COATS OF EPOXY RESIN:
    - 4.2.1.1. TANKS INTERNAL SURFACE.
    - 4.2.1.2. MUD LINE PIPING EXTERNAL AND INTERNAL SURFACE (WHERE POSSIBLE).
  - 4.2.2. THREE COATS OF SYNTHETIC ENAMEL PAINT GREEN SHADE:
    - 4.2.2.1. TANKS EXTERNAL SURFACE.
    - 4.2.2.2. SKIDS, WALKWAYS, GRATINGS, HAND RAILINGS, STAIRS ETC.



18	GRATING	1		
17	GRATING	28		
16	HAND RAILING	3		
15	HAND RAILING	1		
14	HAND RAILING	1		
13	HAND RAILING	21		
12	HAND RAILING	19		
11	FOLDING WALKWAY WITH GRATING	2		
10	FOLDING WALKWAY WITH GRATING	1		
9	FOLDING WALKWAY WITH GRATING	1		
8	FOLDING WALKWAY WITH GRATING	1		
7	FOLDING WALKWAY WITH GRATING	3		
6	MUD TRIP TANK WITH SKID (ONLY FOR REF.)	1		
5	MUD RESERVE TANK NO.2 WITH SKID	1		
4	MUD RESERVE TANK NO.1 WITH SKID	1		
3	MUD SUCTION TANK WITH SKID	1		
2	MUD INTERMEDIAT TANK WITH SKID	1		
1	MUD SHAKER TANK WITH SKID	1		

38	HAND RAILING	8		
37	NAME PLATE	6		
36	SLEEVE JOINT NPS 12"	8		
35	PIPE NPS 12"	4	SCH.40	A106-B
34	PIPE NPS 12"	2	SCH.40	A106-B
33	SLEEVE JOINT NPS 6"	8		
32	PIPE NPS 6"	2	SCH.40	A106-B
31	PIPE NPS 6"	1	SCH.40	A106-B
30	PIPE NPS 6"	1	SCH.40	A106-B
29	SLEEVE JOINT NPS 4"	8		
28	PIPE NPS 4"	2	SCH.40	A106-B
27	PIPE NPS 4"	1	SCH.40	A106-B
26	PIPE NPS 4"	1	SCH.40	A106-B
25	SLEEVE JOINT NPS 8"	4		
24		4		
23	PIPE NPS 8"	1	SCH.40	A106-B
22	PIPE NPS 8"	1	SCH.40	A106-B
21	PIPE NPS 12"	1	SCH.40	A106-B
20	PIPE NPS 12"	1	SCH.40	A106-B
19	STAIR	3		

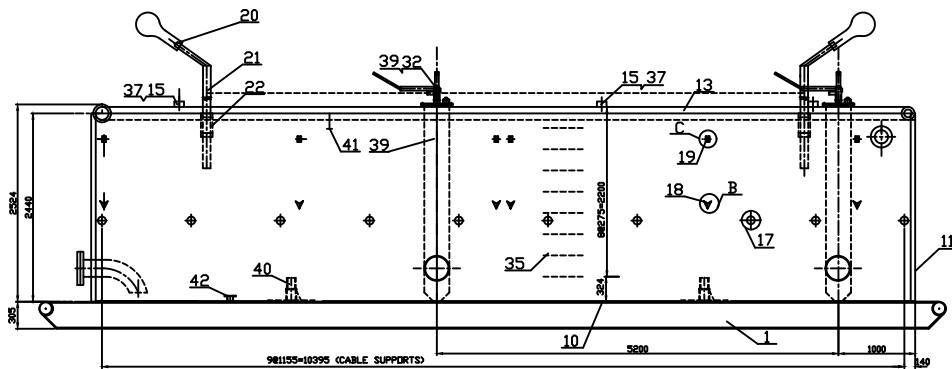
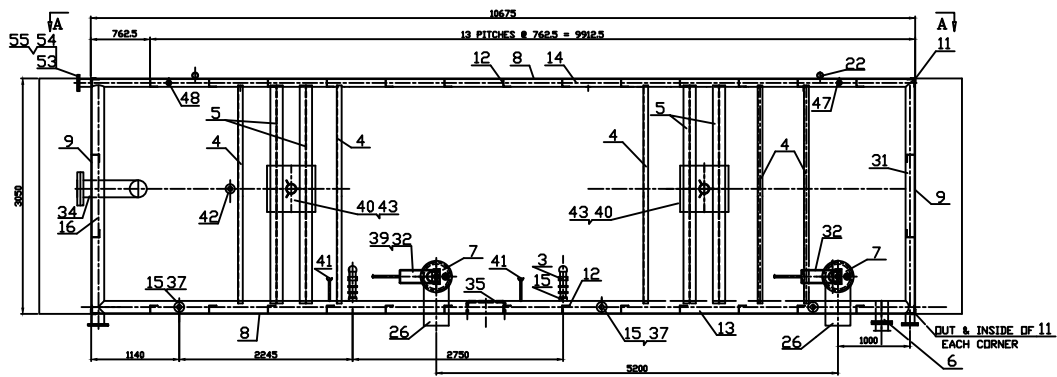
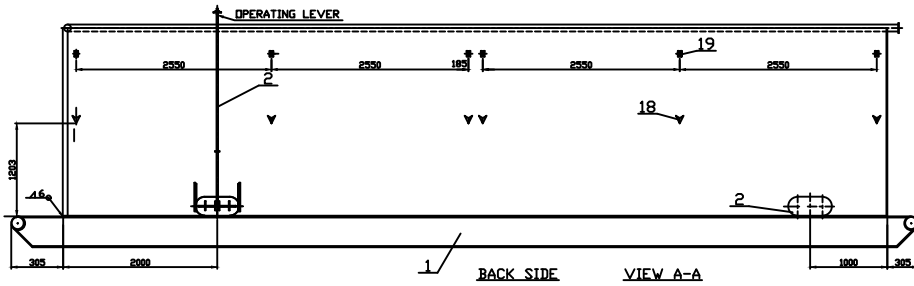
REV.	DESCRIPTION	DATE	BY	MOD.	NOTE
APPROVED	CUSTOMER/PROJECT:				
CHECKED	DIL AND GAS DEVELOPMENT				
DRAWN					
WT. (KGS)	TITLE:-				SECTION:-
SCALE	PLAN OF MUD TANKS WITH				LOG #:-
EQPT. NO.	DET. TOP MOUNTED WALK WAY				REV.NO./SHT.NO.
PRJ.CODE	DRAWING NO.				
DATE					
FILENAME					
COMP.NO.					



56	PLATE	1			
57	L30X30X6	2			
56	PLATE	2			
55	PLATE	1			
54	PLATE	1			
53	PLATE	1			
52	200 WATTS, MERCURY FLOOD LIGHT	2			WORKING BY WEATHER PROOF
51	RUBBER SEAL OD345, ID222, 5 THK	2			RUBBER
50	STUD BOLT M16X125 W/2 NUTS	8	DIN940/555	5.6	
49	FLANGE OD345, ID222, 12THK	2			
48	COUPLING W/PLUG KG2"	1			
47	COUPLING W/PLUG KG1"	1			
46	PLATE 12x60x100	20			
45	PLATE 12x70x180	10			
44	ELBOW NPS 8", 90° LR	1			ASTM A106-B
43	FRAME	2			
42	VOLUME RETAINER	1			
41	GUIDE	2			
40	PEDESTAL FOR AGITATOR	2			
39	SUCTION VALVE INNER ASSY.	2			
38	O SEAL #345	3	H64-333-86		RUBBER
37	PLUG KG 3"	1			
36	O-SEAL OD 350x#8.6	2	H64-333-86		RUBBER
35	ROD #25	8			
34	PIPE NPS 8"	1			A106-B
33	PLATE	2			
32	OPERATING LEVER	2			
31	PIPE NPS 4"	1			A106-B
30	O-SEAL #470X#12	2	H64-333-86		
29	PIPE OD 20	2			
28	PLATE	2			
27	PLATE	2			
26	SUC. BY. LINE PIPE NPS12"	249			A106-B
25	WASHER 12	14			ST
24	NUT M12	14			5.6
23	BOLT M12	14			5.6
22	PIPE NPS 2-1/2"	2			A53-B
21	PIPE NPS2"	2			A53-B
20	PIPE NPS 1-1/2"	2			A53-B
19	PLATE	20			
18	L63X63X6	6			
17	PIPE NPS 2"	10			A53-B
16	PIPE NPS 6"	1			A106-B
15	MUD GUNLINE COUPLING #125X70	5			
14	WATER LINE PIPE NPS 4"	1			A106-B
13	MUD GUN LINE PIPE NPS6"	1			A106-B
12	L102X102X8	30			
11	L63X63X6	8			
10	PLATE	1			
9	PLATE	2			
8	PLATE	2			
7	BURTON SPHER VALVE PIPE NPS 12"	2			A106-B
6	MUD DITCH LINE CONNECTION	4			
5	HEB 152X152X10	5			
4	L102X102X8	5			
3	LP BOTTOM MUD GUN LINE FITTING	2			
2	LEVER OPERATING CLEAN OUT GATE	2			
1	SKID	1			
P					
NO.	DESCRIPTION	QTY	DRG. NO. STD. NO.	MAT.	WEIGHT KGS. REMARKS
REV.	DESCRIPTION	DATE	BY	MOD.	NOTE
APPROVED	CUSTOMER/PROJECT:				
CHECKED	DIL AND GAS DEVELOPMENT CORPORATION				
DRAWN					
WT. (KGS)	TITLE:-				SECTION-
SCALE	DETAIL OF				CHEMPLANT
SPRT. NO.	MUD RESERVE TANK NO 1				OFF P-
PRJ.CODE	DRAWING NO.				REV.NO./SHT.NO.
DATE					
FILE NAME					
COMP.NO.					

HMC HEAVY MECHANICAL COMPLEX TAXILA

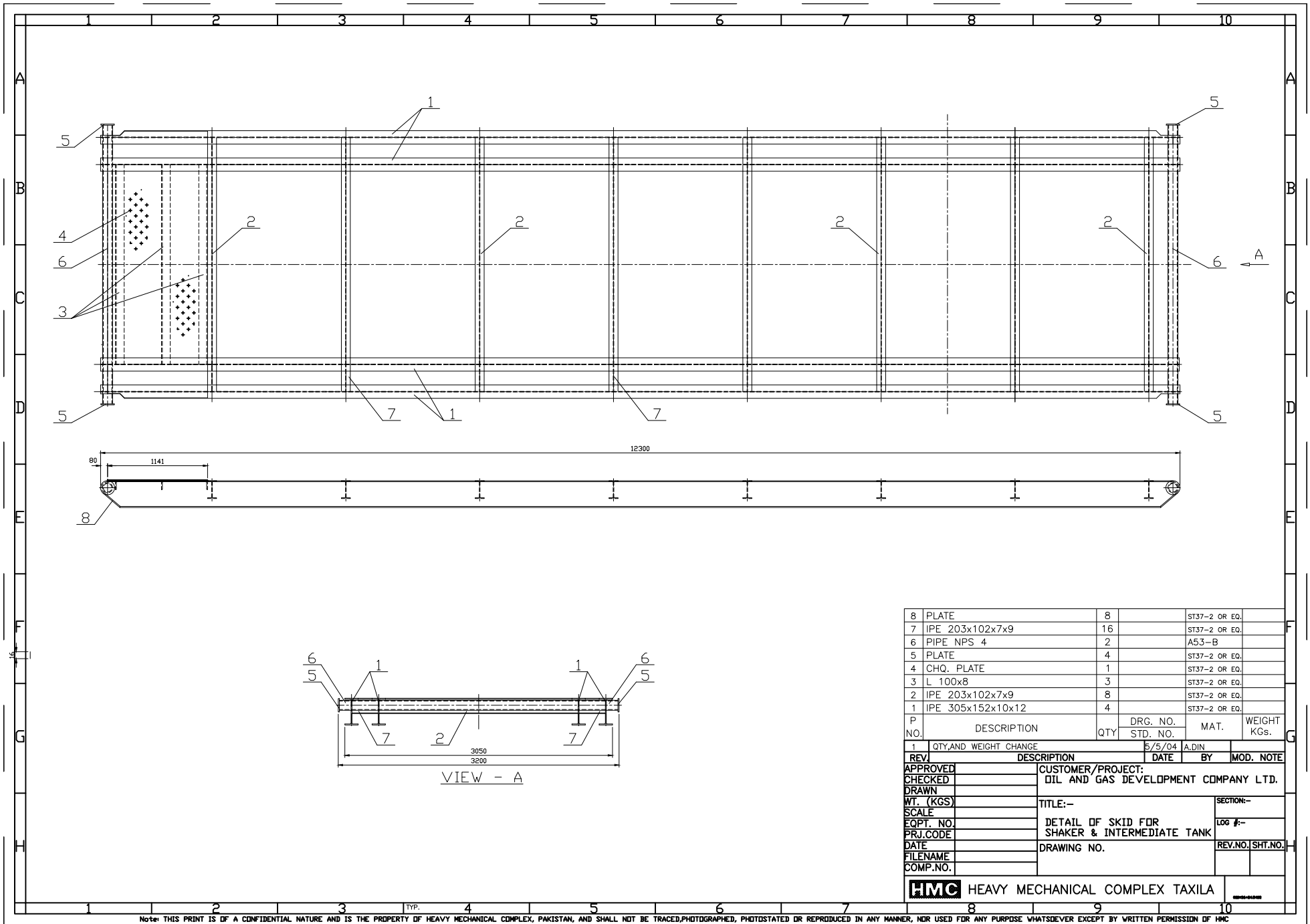
Note: This print is of a confidential nature and is the property of Heavy Mechanical Complex, Pakistan, and shall not be traced, photographed, photostated or reproduced in any manner, nor used for any purpose whatsoever except by written permission of HMC.



59	STUD BOLT M16 W/2 NUTS	8	HALL THREADED	5.6	
58	RUBBER SEAL	4			
57	FLANGE	4			
56	PIPE NIPPLE NPS 3"	2	1 END THREADED	A108-B	
55	RUBBER SEAL	1			
54	STUD BOLT M16 W/2 NUTS	8		5.6	
53	FLANGE	1	W/BL. FLANGE		
52	200 WATTS, MERCURY FLOOD LIGHT	2			
51	RUBBER SEAL	2			
50	STUD BOLT M16 W/2 NUTS	8	HALL THREADED	5.6	
49	FLANGE	2			
48	COUPLING W/PLUG KG2"	1			
47	COUPLING W/PLUG KG1"	1			
46	PLATE	20			
45	ELBOW NPS 8", 90° LR	10			
44	FRAME	1			
43	VOLUME RETAINER	2			
42	GUIDE	2			
41	PEDESTAL FOR AGITATOR	2			
40	SUCTION VALVE INNER ASSY.	2			
39	O SEAL #345X12	3			
38	PLUG KG 3"	3			
37	O-SEAL OD 350x#8.6	2			
36	ROD #25	8			
35	PIPE NPS 8"	1			
34	PLATE	2			
33	OPERATING LEVER	2			
32	PIPE NPS 4"	1			
31	O-SEAL #470X#12	2			
30	PIPE OD 20	2			
29	PLATE	2			
28	FLANGE	2			
27	BUCT. SYSTEM LINE PIPE NPS 12"	2			
26	WASHER 12	14			
25	NUT M12	14			
24	BOLT M12	14			
23	PIPE NPS 2-1/2"	2			
22	PIPE NPS2"	2			
21	PIPE NPS 1-1/2"	2			
20	PLATE	24			
19	L63X63X6	12			
18	PIPE NPS 2"	10			
17	PIPE NPS 6"	1			
16	MUD GUNLINE COUPLING #125X70	5			
15	WATER LINE PIPE NPS 4"	1			
14	MUD GUN LINE PIPE NPS#"	11			
13	L102X102X8	8			
12	L63X63X6	1			
11	PLATE	1			
10	PLATE	2			
9	PLATE	2			
8	SUCTION SYSTEM VALVE PIPE NPS 12"	2			
7	MUD DITCH LINE CONNECTION	1			
6	HEB 152X152X10	4			
5	L102X102X8	5			
4	LP BOTTOM MUD GUN LINE FITTING	2			
3	LEVER OPERATING CLEAN OUT GATE	2			
2	SKID	1			
1					
P NO.	DESCRIPTION	QTY	DRG. NO.	MAT.	WEIGHT KGS.
REV	DESCRIPTION	DATE	BY	MOD.	NOTE

APPROVED	CUSTOMER/PROJECT:				
CHECKED	DIL AND GAS DEVELOPMENT COMPANY LTD.				
DRAWN					
WT. (KGS)	TITLE:-				
SCALE	DETAIL OF				
COPY NO.	MUD RESERVE TANK NO. 2				
PRJ.CODE					
DATE	DRAWING NO.				
FILE NAME					
COMP.NO.					

HMC HEAVY MECHANICAL COMPLEX TAXILA

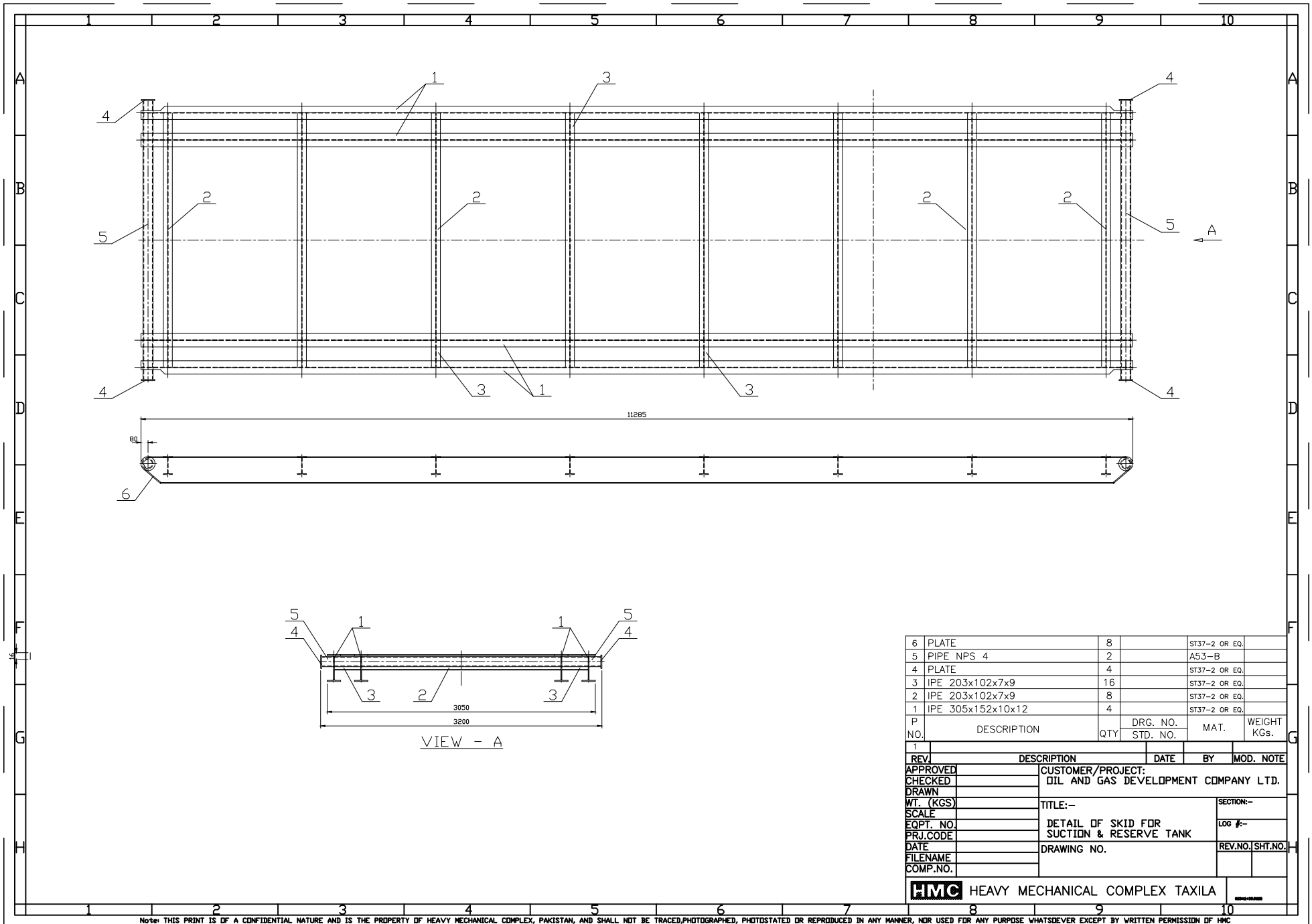


8	PLATE	8		ST37-2 OR EQ.	
7	IPE 203x102x7x9	16		ST37-2 OR EQ.	
6	PIPE NPS 4	2		A53-B	
5	PLATE	4		ST37-2 OR EQ.	
4	CHQ. PLATE	1		ST37-2 OR EQ.	
3	L 100x8	3		ST37-2 OR EQ.	
2	IPE 203x102x7x9	8		ST37-2 OR EQ.	
1	IPE 305x152x10x12	4		ST37-2 OR EQ.	
P	DESCRIPTION	QTY	DRG. NO.	MAT.	WEIGHT
NO.			STD. NO.		KGS.

1	QTY. AND WEIGHT CHANGE	5/5/04	A.DIN	
REV.	DESCRIPTION	DATE	BY	MOD. NOTE
APPROVED				CUSTOMER/PROJECT:
CHECKED				DIL AND GAS DEVELOPMENT COMPANY LTD.
DRAWN				
WT. (KGS)				TITLE:-
SCALE				SECTION:-
EQPT. NO.				LOG #:-
PRJ.CODE				DETAIL OF SKID FOR SHAKER & INTERMEDIATE TANK
DATE				DRAWING NO.
FILENAME				REV.NO./SHT.NO.
COMP.NO.				

**HMC** HEAVY MECHANICAL COMPLEX TAXILA

Note: THIS PRINT IS OF A CONFIDENTIAL NATURE AND IS THE PROPERTY OF HEAVY MECHANICAL COMPLEX, PAKISTAN, AND SHALL NOT BE TRACED, PHOTOGRAPHED, PHOTOSTATED OR REPRODUCED IN ANY MANNER, NOR USED FOR ANY PURPOSE WHATSOEVER EXCEPT BY WRITTEN PERMISSION OF HMC



6	PLATE	8		ST37-2 OR EQ.	
5	PIPE NPS 4	2		A53-B	
4	PLATE	4		ST37-2 OR EQ.	
3	IPE 203x102x7x9	16		ST37-2 OR EQ.	
2	IPE 203x102x7x9	8		ST37-2 OR EQ.	
1	IPE 305x152x10x12	4		ST37-2 OR EQ.	
P			DRG. NO.	MAT.	WEIGHT
NO.	DESCRIPTION	QTY	STD. NO.		KGS.

REV.	DESCRIPTION	DATE	BY	MOD. NOTE
APPROVED	CUSTOMER/PROJECT:			
CHECKED	DIL AND GAS DEVELOPMENT COMPANY LTD.			
DRAWN	TITLE:-			
WT. (KGS)	DETAIL OF SKID FOR			SECTION:-
SCALE	SUCTION & RESERVE TANK			LOG #:-
EQPT. NO.	DRAWING NO.			REV.NO./SHT.NO.
PRJ.CODE				
DATE				
FILENAME				
COMP.NO.				

**HMC** HEAVY MECHANICAL COMPLEX TAXILA

Note: THIS PRINT IS OF A CONFIDENTIAL NATURE AND IS THE PROPERTY OF HEAVY MECHANICAL COMPLEX, PAKISTAN, AND SHALL NOT BE TRACED, PHOTOGRAPHED, PHOTOSTATED OR REPRODUCED IN ANY MANNER, NOR USED FOR ANY PURPOSE WHATSOEVER EXCEPT BY WRITTEN PERMISSION OF HMC