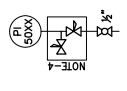


NOTES :

- 1. INLET MANIFOLDS HAVE BEEN PLACED AT TAY-3 LOCATION.
- 2. LINE SIZE IS PROVIDED BY PACKAGE SUPPLIER OF SEPARATORS.
- 3. MOBILE SCRAPER RECEIVER SHALL BE CONNECTED AT THIS VALVE.
- 4. INSTRUMENT VALVE MANIFOLD (BLOCK AND BLEED), PART OF INSTRUMENT VALVE ASSEMBLY.
- 5. REFER TO BELOW DETAIL FOR TYPICAL ARRANGEMENT OF PRESSURE INDICATOR.
- 6. SIGNAL FROM 31 TO 46 ARE TO BE TERMINATED & DISPLAYED AT RTU-2501.



REV.	DESCRIPTION	DATE	BY	CHKD.	APPD.
1	AS BUILT				

OIL & GAS DEVELOPMENT COMPANY LTD.
Zishan Engineers (Pvt.) Ltd.
AN ISO 9001:2008 CERTIFIED COMPANY
P-00071, PAKISTAN & SAUDI ARABIA
P-00071, PAKISTAN & SAUDI ARABIA
P-00071, PAKISTAN & SAUDI ARABIA

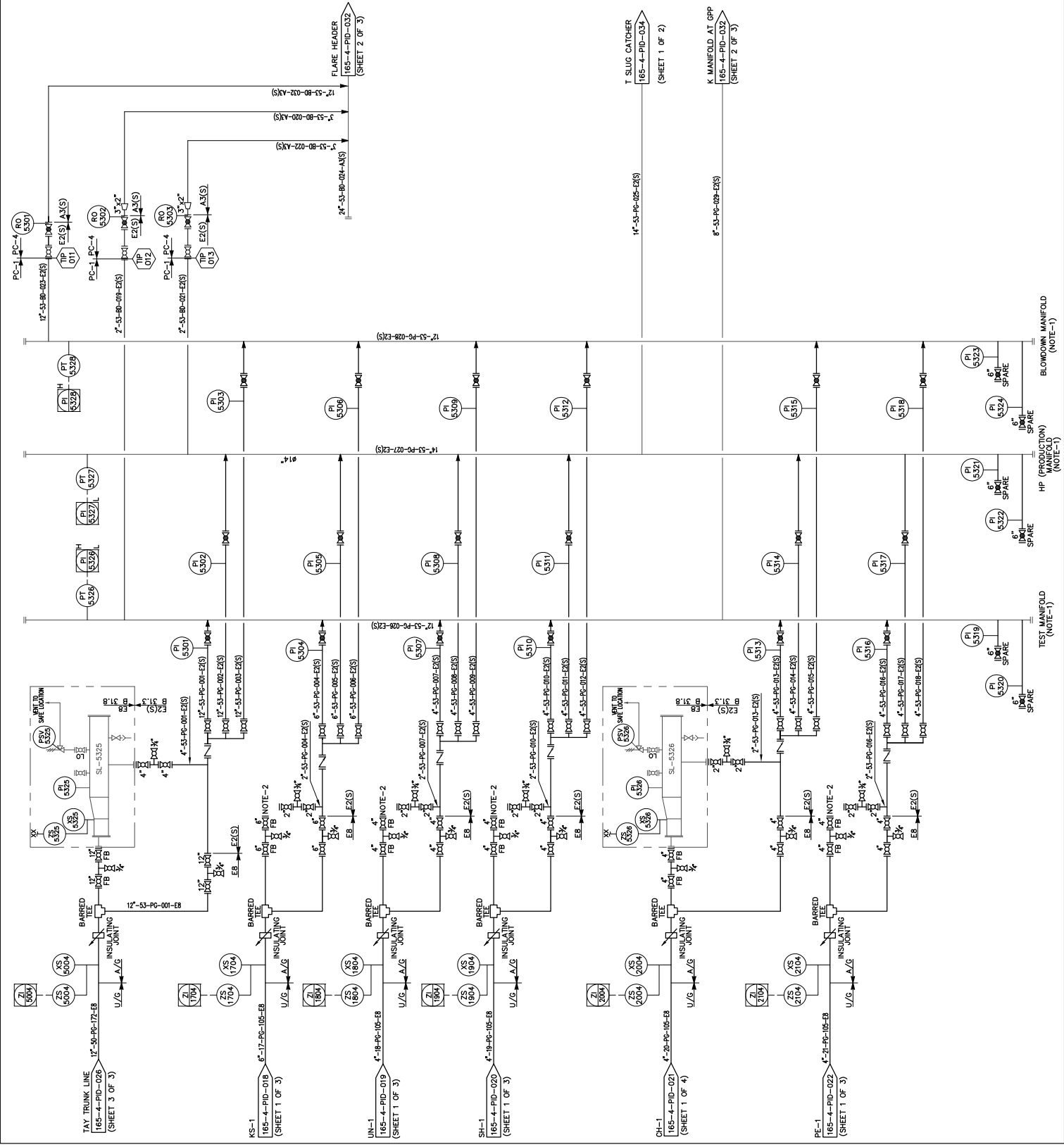
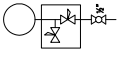
DWG. NO. 165-4-PID-026
REV. F0

JOB NO. 165-4
SHEET 3 OF 3

PROJECT : KPD-TAY INTEGRATED DEVELOPMENT PROJECT
TITLE : GATHERING SYSTEM AT TAY-3

NOTES :

1. INLET MANIFOLDS HAVE BEEN PLACED AT GRP LOCATION.
2. MOBILE SCRAPER RECEIVER SHALL BE CONNECTED AT THIS VALVE.
3. INSTRUMENT VALVE MANFOLD (BLOCK AND BLEED), PART OF INSTRUMENT VALVE ASSEMBLY.
4. DETAIL FOR TYPICAL ARRANGEMENT FOR ALL PRESSURE INSTRUMENTS PI,PT,PSHH,PSLL,PSH,PSL.



REV.	DATE	BY	CHKD.	APPD.
1	04/22/2017	AS	AS	AS
2	04/22/2017	AS	AS	AS
3	04/22/2017	AS	AS	AS
4	04/22/2017	AS	AS	AS
5	04/22/2017	AS	AS	AS
6	04/22/2017	AS	AS	AS
7	04/22/2017	AS	AS	AS
8	04/22/2017	AS	AS	AS
9	04/22/2017	AS	AS	AS
10	04/22/2017	AS	AS	AS
11	04/22/2017	AS	AS	AS
12	04/22/2017	AS	AS	AS
13	04/22/2017	AS	AS	AS
14	04/22/2017	AS	AS	AS
15	04/22/2017	AS	AS	AS
16	04/22/2017	AS	AS	AS
17	04/22/2017	AS	AS	AS
18	04/22/2017	AS	AS	AS
19	04/22/2017	AS	AS	AS
20	04/22/2017	AS	AS	AS
21	04/22/2017	AS	AS	AS
22	04/22/2017	AS	AS	AS
23	04/22/2017	AS	AS	AS
24	04/22/2017	AS	AS	AS
25	04/22/2017	AS	AS	AS
26	04/22/2017	AS	AS	AS
27	04/22/2017	AS	AS	AS
28	04/22/2017	AS	AS	AS
29	04/22/2017	AS	AS	AS
30	04/22/2017	AS	AS	AS
31	04/22/2017	AS	AS	AS
32	04/22/2017	AS	AS	AS
33	04/22/2017	AS	AS	AS
34	04/22/2017	AS	AS	AS
35	04/22/2017	AS	AS	AS
36	04/22/2017	AS	AS	AS
37	04/22/2017	AS	AS	AS
38	04/22/2017	AS	AS	AS
39	04/22/2017	AS	AS	AS
40	04/22/2017	AS	AS	AS
41	04/22/2017	AS	AS	AS
42	04/22/2017	AS	AS	AS
43	04/22/2017	AS	AS	AS
44	04/22/2017	AS	AS	AS
45	04/22/2017	AS	AS	AS
46	04/22/2017	AS	AS	AS
47	04/22/2017	AS	AS	AS
48	04/22/2017	AS	AS	AS
49	04/22/2017	AS	AS	AS
50	04/22/2017	AS	AS	AS
51	04/22/2017	AS	AS	AS
52	04/22/2017	AS	AS	AS
53	04/22/2017	AS	AS	AS
54	04/22/2017	AS	AS	AS
55	04/22/2017	AS	AS	AS
56	04/22/2017	AS	AS	AS
57	04/22/2017	AS	AS	AS
58	04/22/2017	AS	AS	AS
59	04/22/2017	AS	AS	AS
60	04/22/2017	AS	AS	AS
61	04/22/2017	AS	AS	AS
62	04/22/2017	AS	AS	AS
63	04/22/2017	AS	AS	AS
64	04/22/2017	AS	AS	AS
65	04/22/2017	AS	AS	AS
66	04/22/2017	AS	AS	AS
67	04/22/2017	AS	AS	AS
68	04/22/2017	AS	AS	AS
69	04/22/2017	AS	AS	AS
70	04/22/2017	AS	AS	AS
71	04/22/2017	AS	AS	AS
72	04/22/2017	AS	AS	AS
73	04/22/2017	AS	AS	AS
74	04/22/2017	AS	AS	AS
75	04/22/2017	AS	AS	AS
76	04/22/2017	AS	AS	AS
77	04/22/2017	AS	AS	AS
78	04/22/2017	AS	AS	AS
79	04/22/2017	AS	AS	AS
80	04/22/2017	AS	AS	AS
81	04/22/2017	AS	AS	AS
82	04/22/2017	AS	AS	AS
83	04/22/2017	AS	AS	AS
84	04/22/2017	AS	AS	AS
85	04/22/2017	AS	AS	AS
86	04/22/2017	AS	AS	AS
87	04/22/2017	AS	AS	AS
88	04/22/2017	AS	AS	AS
89	04/22/2017	AS	AS	AS
90	04/22/2017	AS	AS	AS
91	04/22/2017	AS	AS	AS
92	04/22/2017	AS	AS	AS
93	04/22/2017	AS	AS	AS
94	04/22/2017	AS	AS	AS
95	04/22/2017	AS	AS	AS
96	04/22/2017	AS	AS	AS
97	04/22/2017	AS	AS	AS
98	04/22/2017	AS	AS	AS
99	04/22/2017	AS	AS	AS
100	04/22/2017	AS	AS	AS
101	04/22/2017	AS	AS	AS
102	04/22/2017	AS	AS	AS
103	04/22/2017	AS	AS	AS
104	04/22/2017	AS	AS	AS
105	04/22/2017	AS	AS	AS
106	04/22/2017	AS	AS	AS
107	04/22/2017	AS	AS	AS
108	04/22/2017	AS	AS	AS
109	04/22/2017	AS	AS	AS
110	04/22/2017	AS	AS	AS
111	04/22/2017	AS	AS	AS
112	04/22/2017	AS	AS	AS
113	04/22/2017	AS	AS	AS
114	04/22/2017	AS	AS	AS
115	04/22/2017	AS	AS	AS
116	04/22/2017	AS	AS	AS
117	04/22/2017	AS	AS	AS
118	04/22/2017	AS	AS	AS
119	04/22/2017	AS	AS	AS
120	04/22/2017	AS	AS	AS
121	04/22/2017	AS	AS	AS
122	04/22/2017	AS	AS	AS
123	04/22/2017	AS	AS	AS
124	04/22/2017	AS	AS	AS
125	04/22/2017	AS	AS	AS
126	04/22/2017	AS	AS	AS
127	04/22/2017	AS	AS	AS
128	04/22/2017	AS	AS	AS
129	04/22/2017	AS	AS	AS
130	04/22/2017	AS	AS	AS
131	04/22/2017	AS	AS	AS
132	04/22/2017	AS	AS	AS
133	04/22/2017	AS	AS	AS
134	04/22/2017	AS	AS	AS
135	04/22/2017	AS	AS	AS
136	04/22/2017	AS	AS	AS
137	04/22/2017	AS	AS	AS
138	04/22/2017	AS	AS	AS
139	04/22/2017	AS	AS	AS
140	04/22/2017	AS	AS	AS
141	04/22/2017	AS	AS	AS
142	04/22/2017	AS	AS	AS
143	04/22/2017	AS	AS	AS
144	04/22/2017	AS	AS	AS
145	04/22/2017	AS	AS	AS
146	04/22/2017	AS	AS	AS
147	04/22/2017	AS	AS	AS
148	04/22/2017	AS	AS	AS
149	04/22/2017	AS	AS	AS
150	04/22/2017	AS	AS	AS
151	04/22/2017	AS	AS	AS
152	04/22/2017	AS	AS	AS
153	04/22/2017	AS	AS	AS
154	04/22/2017	AS	AS	AS
155	04/22/2017	AS	AS	AS
156	04/22/2017	AS	AS	AS
157	04/22/2017	AS	AS	AS
158	04/22/2017	AS	AS	AS
159	04/22/2017	AS	AS	AS
160	04/22/2017	AS	AS	AS
161	04/22/2017	AS	AS	AS
162	04/22/2017	AS	AS	AS
163	04/22/2017	AS	AS	AS
164	04/22/2017	AS	AS	AS
165	04/22/2017	AS	AS	AS
166	04/22/2017	AS	AS	AS
167	04/22/2017	AS	AS	AS
168	04/22/2017	AS	AS	AS
169	04/22/2017	AS	AS	AS
170	04/22/2017	AS	AS	AS
171	04/22/2017	AS	AS	AS
172	04/22/2017	AS	AS	AS
173	04/22/2017	AS	AS	AS
174	04/22/2017	AS	AS	AS
175	04/22/2017	AS	AS	AS
176	04/22/2017	AS	AS	AS
177	04/22/2017	AS	AS	AS
178	04/22/2017	AS	AS	AS
179	04/22/2017	AS	AS	AS
180	04/22/2017	AS	AS	AS
181	04/22/2017	AS	AS	AS
182	04/22/2017	AS	AS	AS
183	04/22/2017	AS	AS	AS
184	04/22/2017	AS	AS	AS
185	04/22/2017	AS	AS	AS
186	04/22/2017	AS	AS	AS
187	04/22/2017	AS	AS	AS
188	04/22/2017	AS	AS	AS
189	04/22/2017	AS	AS	AS
190	04/22/2017	AS	AS	AS
191	04/22/2017	AS	AS	AS
192	04/22/2017	AS	AS	AS
193	04/22/2017	AS	AS	AS
194	04/22/2017	AS	AS	AS
195	04/22/2017	AS	AS	AS
196	04/22/2017	AS	AS	AS
197	04/22/2017	AS	AS	AS
198	04/22/2017	AS	AS	AS
199	04/22/2017	AS	AS	AS
200	04/22/2017	AS	AS	AS
201	04/22/2017	AS	AS	AS
202	04/22/2017	AS	AS	AS
203	04/22/2017	AS	AS	AS
204	04/22/2017	AS	AS	AS
205	04/22/2017	AS	AS	AS
206	04/22/2017	AS	AS	AS
207	04/22/2017	AS	AS	AS
208	04/22/2017	AS	AS	AS
209	04/22/2017	AS	AS	AS
210	04/22/2017	AS	AS	AS
211	04/22/2017	AS	AS	AS
212	04/22/2017	AS	AS	AS
213	04/22/2017	AS	AS	AS
214	04/22/2017	AS	AS	AS
215	04/22/2017	AS	AS	AS
216	04/22/2017	AS	AS	AS
217	04/22/2017	AS	AS	AS
218	04/22/2017	AS	AS	AS
219	04/22/2017	AS	AS	AS
220	04/22/2017	AS	AS	AS
221	04/22/2017	AS	AS	AS
222	04/22/2017	AS	AS	AS
223	04/22/2017	AS	AS	AS
224	04/22/2017	AS	AS	AS
225	04/22/2017	AS	AS	AS
226	04/22/2017	AS	AS	AS
227	04/22/2017	AS	AS	AS
228	04/22/2017	AS	AS	AS
229	04/22/2017	AS	AS	AS
230	04/22/2017	AS	AS	AS
231	04/22/2017	AS	AS	AS
232	04/22/2017	AS	AS	AS
233	04/22/2017	AS	AS	AS
234	04/22/2017	AS	AS	AS
235	04/22/2017	AS	AS	AS
236	04/22/2017	AS	AS	AS
237	04/22/2017	AS	AS	AS
238	04/22/2017	AS	AS	AS
239	04/22/2017	AS	AS	AS
240	04/22/2017	AS	AS	AS
241	04/22/2017	AS	AS	AS
242	04/22/2017	AS	AS	AS
243	04/22/2017	AS	AS	AS
244	04/22/2017	AS	AS	AS
245	04/22/2017	AS	AS	AS
246	04/22/2017	AS	AS	AS
247	04/22/2017	AS	AS	AS
248	04/22/2017	AS	AS	AS
249	04/22/2017	AS	AS	AS
250	04/22/2017	AS	AS	AS
251	04/22/2017	AS	AS	AS
252	04/22/2017	AS	AS	AS
253	04/22/2017	AS	AS	AS
254	04/22/2017	AS	AS	AS
255	04/22/2017	AS	AS	AS
256	04/22/2017	AS	AS	AS
257	04/22/2017	AS	AS	AS
258	04/22/2017	AS	AS	AS
259	04/22/2017	AS	AS	AS
260	04/22/2017	AS	AS	AS
261	04/22/2017	AS	AS	AS
262	04/22/2017	AS	AS	AS
263	04/22/2017	AS	AS	AS
264	04/22/2017	AS	AS	AS
265	04/22/2017	AS	AS	AS
266	04/22/2017	AS	AS	AS
267	04/22/2017	AS	AS	AS
268	04/22/2017	AS	AS	AS
269	04/22/2017	AS	AS	AS
270	04/22/2017	AS	AS	AS
271	04/22/2017	AS	AS	AS
272	04/22/2017	AS	AS	AS
273	04/22/2017	AS	AS	AS
274	04/22/2017	AS	AS	AS
275	04/22/2017	AS	AS	AS
276				