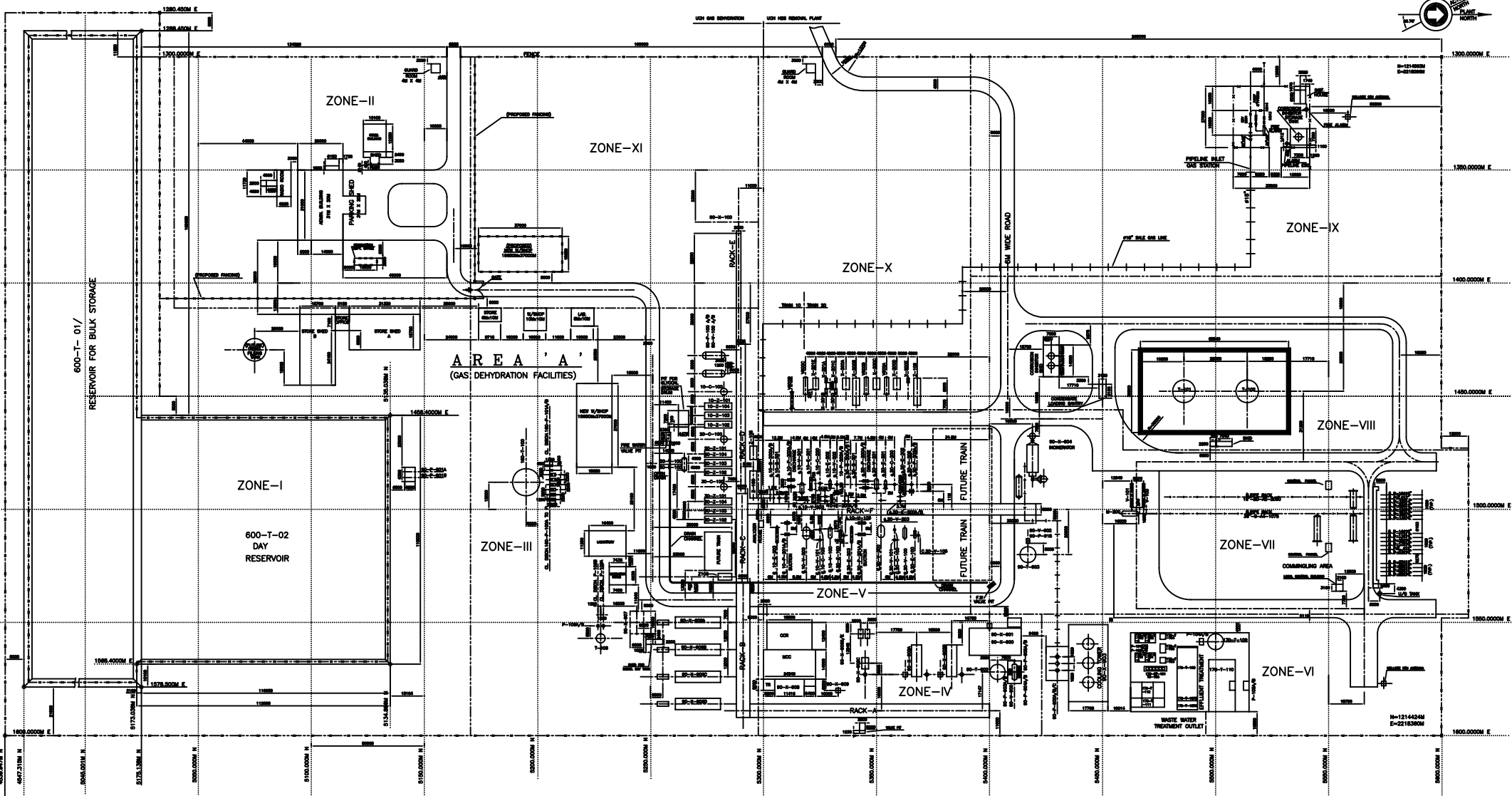


## Clarification# 1 against Tender# PROC-SERVICES/CB/P&amp;P-4756/2020

SR. NO.	CONCERNS / QUERIES	OGDCL REPLY
1	As per ITB, CVs of direct man power/supervisors are to be provided by contractor. However for direct man power large number CVs are required and confirmation of the particular direct man power before 5 months of execution is not convincing. kindly allow us to present our indirect manpower Can direct man power CVs can be shared after the award of job. OGDCL also have the right to conduct the interviews of contractor's manpower.	Agreed
2	Client is requested to please share the COVID 19 requirements.	The general SOP laid down by GOP. However, OGDCL specific SOP/requirements will be shared to successful contractor after award of job.
3	In tender document pint # 6, it is written that sow is subjected to increase or decrease and contractor will be paid as per actual work done; kindly define a minimum limit upto which the sow will not be reduced so that contractor can avoid the mobilization of unnecessary resources.	Currently all the provided SOW is needed to be covered however addition or deletion of SOW will remain within contract limit and it will be not more than 15% of total contract value.
4	Is excavation required for any piping or equipment work and who will be responsible to perform it contractor or OGDCL	No excavation work included in SOW
5	Please provide us the plot plan of UCH Gas -1 plant that will assist us to calculate exact resources / equipment's	Plot Plan is attached
6	As per our understanding, Compressed air for ventilation of columns, electricity for for welding plants and for stress relieving machines & water for jetting will be provided by OGDCL. Please confirm.	Electricity and water shall be provided by OGDCL but for ventilation and filters cleaning etc. as per SOW, Contractor will have to arrange air compressors accordingly.
7	Please confirm whether valid card holder welders are acceptable to OGDCL. If not, for welders qualification tests, test pieces & consumables will be provided by OGDCL. Kindly confirm.	3rd Party Valid Card Holder Welders are acceptable to OGDCL. In case of welder qualification test, OGDCL will provide test piece & consumable will be contractor responsibility
8	In TOR Security has to be arranged by contractor. Previously security was provided by OGDCL in/out movement in plant as well as at colony. Moreover, OGDCL used to provide convoy for the movement of manpower as well as for equipment and resources manpower from Plant site to Jacobabad. Kindly confirm what sort of security will be provided by OGDCL and what kind of security has to be arranged by contractor.	The security of Uch Gas Field well sites, Plant & Residential Colony is fully covered by FC Troops (Sibi Scout) and in/out movement from Plant site to Jacobabad is also have security coverage with convoy available on each Monday, Thursday & Saturday. As already mentioned in "Terms & Condition ATA-2020" attached with Scope of Work that this security coverage will be extended to Contractor manpower.
9	The management accommodation will be provided by OGDCL in caravans, please confirm	Agreed
10	It is been considered as per previous practice that utilities like drinking water, washroom, instrument air, compressed air and other supplies will be provided by OGDCL. kindly confirm	Utilities will be provided as per previous practice. For ventilation, filters cleaning, any other requirement Contractor will arrange air compressors accordingly
11	Kindly confirm that what are the taxes applicable in the Baluchistan region for UCH Gas field ATA	Please consult your tax consultant.
12	We assume that insulation material (if required) will be provided by OGDCL. Please confirm.	OGDCL will provide insulation material
13	Please share pressure-rating list of all PSVs for calibration jobs	PSV's Size & Pressure Rating List attached
14	Is all mentioned SOW in provided ITB within plant battery limit? As it is mentioned in E&I SOW that some job has to be conducted at well site.	There are some jobs at Well sites as per T&I (Prod.) SOW.
15	Any 3rd party requirement for inspection of PSVs?	Inspection of PSVs will be carried out by Site engineers.
16	Test bench of PSV's calibration will be provided by OGDCL or contractor. Please confirm	Certified test bench will be arranged By Contractor as mentioned in T & C of ITB
17	Can Equipment be rented from OGDCL on back charging basis. Kindly provide the unit rate on per day basis for back charging so that contractor will not consider the particular cost in its estimation.	As per TOR, Contractor would have to arrange all necessary resources to carry out ATA SOW.
18	As per our understanding nitrogen purging is in OGDCL scope. Contractor will only assist in nitrogen purging. Kindly confirm.	Agreed
19	OGDCL will be hiring third party ASME inspector for boiler. Kindly clarify.	No, there is not any requirement of ASME Inspector for Boilers however Chief Inspector of Boilers, Govt. of Balochistan will carry out inspection of Boilers
20	As per our understanding after reviewing ITB, plugging of exchanger tubes is not in contractors scope. Please confirm.	If tubes of any exchanger included in SOW are required to be plugged, Plugging shall be carried out by Contractor.
21	Kindly confirm is there any modification job in contractor's scope. As there is no such thing mentioned in tender document.	As per SOW
22	Kindly share with us inspection report of amine strippers to calculate the repair work.	Amine stripper of H2S Train-10 was lined upto 5 meter from bottom dish-end with 3mm SS plate by M/S Descon in 2014 ATA of Uch-I. There is no particular repair work available in stripper as of now. On opening & inspection, if there is some repair/replacement of lining or repair work at any other area, will be carried out by contractor.
23	As per ITB explanatory contractor has to quote unit rate per dia inch of pipe welding and per kg of structure of welding. However there is no such cost head mentioned in BOQ. Kindly clarify.	There is not such job in SOW, unit rates are required to be valid for any additional job.
24	As per our understandings, subjected job falls in industrial services category and 3% WHT (With Holding tax) will be applicable. Please confirm.	As per actual.
25	Client is requested to please confirm the total approximate area for the painting job.	16000 sq.ft approximately
26	Please confirm who will provide electricity	OGDCL, Uch Gas Field
27	As per shared ITB, 14 days are required before Shutdown period and 7 days required after completion. As per our understanding, it is more than one month (including 13 days of shutdown) and it can make a huge impact on cost. Please clarify total time period for which manpower will be mobilized at plant.	It is mentioned to confirm the contractor for timely mobilization of its resources as ATA is time bound activity and contractor should have to start mobilization of resources for pre-shutdown activities and arrangements atleast two week before the commencement of ATA.

**OIL & GAS DEVELOPMENT COMPANY LIMITED**  
**UCH-I GAS PROCESSING PLANT - ATA 2020**  
**(PSVs Sizes, Ratings and Set Points)**

Act #	Tag #.	Specifications	Remarks	Qty	Set Point	Class
<b>PRESSURE SAFETY VALVES:-</b>						
<b>EGTs Fuel Gas Skid</b>			<b>Location</b>			
280	PSV-1	Size 4"x6"	EGT's Fuel gas skid	1	23 Bar	300
281	PSV-2	Size 1"x1"	EGT's Fuel gas skid	1	25 Bar	300
282	PSV-3	Size 1"x1"	EGT's Fuel gas skid	1	25 Bar	300
<b>Boiler/Utilities Area</b>			<b>Location</b>			
289	LP1-PSV-8001	Size: 4" x 6"	LP1 BOILER	1	80 Psi	300
290	LP1-PSV-8002	Size: 6" x 6"	LP1- BOILER	1	90 Psi	300
291	LP2-PSV-8001	Size: 4" x 6"	LP2- BOILER	1	80 Psi	300
292	LP2-PSV-8002	Size: 6" x 6"	LP2- BOILER	1	90 Psi	300
293	HP1-PSV-915	Size: 1" x 1", Make: ESER	HP1- BOILER	1	35 Bar	300
294	HP1-PSV-916	Size: 1" x 1", Make: ESER	HP1- BOILER	1	35 Bar	300
295	HP1-PSV-917	Size: 1" x 1", Make: ESER	HP1- BOILER	1	35 Bar	300
296	HP2-PSV-A	Size: 2" x 3", Make: FARRIS	HP2-A	1	400 Psi	300
297	HP2-PSV-B	Size: 2" x 3", Make: FARRIS	HP2-B	1	410 Psi	300
298	HP2-PSV-C	Size: 2" x 3", Make: FARRIS	HP2-C	1	420 Psi	300
299	DE-AREATOR	Size: 3" x 4", Make: TELEDYNE	DE-AREATOR	1	80 Psi	300
300	LP3-PSV-A	Size: 6" x 8", Make: CROSBY	LP3 Boiler	1	70 Psi	150
301	LP3-PSV-B	Size: 6" x 8", Make: CROSBY	LP3 Boiler	1	75 Psi	150
302	LP3-PSV-C	Size: 6" x 8", Make: CROSBY	LP3 Boiler	1	75 Psi	150
303	PSV-9606	Size: 6" x 8", Make: TELEDYNE	Fuel Gas Skid	1	450 Psi	300
304	PSV-9619	Size: 6" x 8", Make: TELEDYNE	Fuel Gas Skid	1	150 Psi	300
<b>H2S Removal Plant Train-10</b>			<b>Location</b>			
305	10-PSV-1211	Size: 3" x 4", Make: TELEDYNE	Amine Cooler	1	150 Psi	150
306	10-PSV-9316	Size: 3/4" x 1", Make: TELEDYNE	Condensate Pot	1	150 Psi	150
307	10-PSV-9410	Size: 3" x 4", Make: TELEDYNE	Amine Solution Cooler	1	150 Psi	150
<b>H2S Removal Plant Train-20</b>			<b>Location</b>			
308	20-PSV-2211	Size: 3" x 4", Make: TELEDYNE	Amine Cooler	1	150 Psi	150
309	20-PSV-9516	Size: 3/4" x 1", Make: TELEDYNE	Condensate Pot	1	150 Psi	150
<b>Dehydration Train-10</b>			<b>Location</b>			
310	10-PSV-201	Size: 2"x 3/4", Make: HYDROSEAL	Glycol Pump Discharge	1	1030 Psi	600
311	10-PSV-202	Size: 2"x 3/4", Make: HYDROSEAL	Glycol Pump Discharge	1	1030 Psi	600
<b>Dehydration Train-20</b>			<b>Location</b>			
312	20-PSV-201	Size: 2"x 3/4", Make: HYDROSEAL	Glycol Pump Discharge	1	1030 Psi	600
313	20-PSV-202	Size: 2"x 3/4", Make: HYDROSEAL	Glycol Pump Discharge	1	1030 Psi	600
<b>Dehydration Train-30</b>			<b>Location</b>			
314	30-PSV-201	Size: 2"x 3/4", Make: HYDROSEAL	Glycol Pump Discharge	1	1030 Psi	600
315	30-PSV-202	Size: 2"x 3/4", Make: HYDROSEAL	Glycol Pump Discharge	1	1030 Psi	600



### AREA 'B' (AIR STRIP)

QTY	NO.	DESCRIPTION
<b>EQUIPMENT LIST</b>		
<b>ZONE-I</b>		
1	600-T-01	RESERVOIR FOR BULK STORAGE
1	600-T-02	DAY RESERVOIR
1	600-T-03	DAY RESERVOIR
1	600-T-04	DAY RESERVOIR
1	600-T-05	DAY RESERVOIR
<b>ZONE-II</b>		
1	600-T-06	DAY RESERVOIR
1	600-T-07	DAY RESERVOIR
1	600-T-08	DAY RESERVOIR
1	600-T-09	DAY RESERVOIR
1	600-T-10	DAY RESERVOIR
1	600-T-11	DAY RESERVOIR
1	600-T-12	DAY RESERVOIR
1	600-T-13	DAY RESERVOIR
1	600-T-14	DAY RESERVOIR
1	600-T-15	DAY RESERVOIR
1	600-T-16	DAY RESERVOIR
1	600-T-17	DAY RESERVOIR
1	600-T-18	DAY RESERVOIR
1	600-T-19	DAY RESERVOIR
1	600-T-20	DAY RESERVOIR
1	600-T-21	DAY RESERVOIR
1	600-T-22	DAY RESERVOIR
1	600-T-23	DAY RESERVOIR
1	600-T-24	DAY RESERVOIR
1	600-T-25	DAY RESERVOIR
1	600-T-26	DAY RESERVOIR
1	600-T-27	DAY RESERVOIR
1	600-T-28	DAY RESERVOIR
1	600-T-29	DAY RESERVOIR
1	600-T-30	DAY RESERVOIR
1	600-T-31	DAY RESERVOIR
1	600-T-32	DAY RESERVOIR
1	600-T-33	DAY RESERVOIR
1	600-T-34	DAY RESERVOIR
1	600-T-35	DAY RESERVOIR
1	600-T-36	DAY RESERVOIR
1	600-T-37	DAY RESERVOIR
1	600-T-38	DAY RESERVOIR
1	600-T-39	DAY RESERVOIR
1	600-T-40	DAY RESERVOIR
1	600-T-41	DAY RESERVOIR
1	600-T-42	DAY RESERVOIR
1	600-T-43	DAY RESERVOIR
1	600-T-44	DAY RESERVOIR
1	600-T-45	DAY RESERVOIR
1	600-T-46	DAY RESERVOIR
1	600-T-47	DAY RESERVOIR
1	600-T-48	DAY RESERVOIR
1	600-T-49	DAY RESERVOIR
1	600-T-50	DAY RESERVOIR

NO.	DESCRIPTION
<b>ZONE-IV</b>	
1	600-T-51
1	600-T-52
1	600-T-53
1	600-T-54
1	600-T-55
1	600-T-56
1	600-T-57
1	600-T-58
1	600-T-59
1	600-T-60
1	600-T-61
1	600-T-62
1	600-T-63
1	600-T-64
1	600-T-65
1	600-T-66
1	600-T-67
1	600-T-68
1	600-T-69
1	600-T-70
1	600-T-71
1	600-T-72
1	600-T-73
1	600-T-74
1	600-T-75
1	600-T-76
1	600-T-77
1	600-T-78
1	600-T-79
1	600-T-80
1	600-T-81
1	600-T-82
1	600-T-83
1	600-T-84
1	600-T-85
1	600-T-86
1	600-T-87
1	600-T-88
1	600-T-89
1	600-T-90
1	600-T-91
1	600-T-92
1	600-T-93
1	600-T-94
1	600-T-95
1	600-T-96
1	600-T-97
1	600-T-98
1	600-T-99
1	600-T-100

NO.	DESCRIPTION
<b>ZONE-V</b>	
1	600-T-101
1	600-T-102
1	600-T-103
1	600-T-104
1	600-T-105
1	600-T-106
1	600-T-107
1	600-T-108
1	600-T-109
1	600-T-110
1	600-T-111
1	600-T-112
1	600-T-113
1	600-T-114
1	600-T-115
1	600-T-116
1	600-T-117
1	600-T-118
1	600-T-119
1	600-T-120
1	600-T-121
1	600-T-122
1	600-T-123
1	600-T-124
1	600-T-125
1	600-T-126
1	600-T-127
1	600-T-128
1	600-T-129
1	600-T-130
1	600-T-131
1	600-T-132
1	600-T-133
1	600-T-134
1	600-T-135
1	600-T-136
1	600-T-137
1	600-T-138
1	600-T-139
1	600-T-140
1	600-T-141
1	600-T-142
1	600-T-143
1	600-T-144
1	600-T-145
1	600-T-146
1	600-T-147
1	600-T-148
1	600-T-149
1	600-T-150

NO.	DESCRIPTION
<b>ZONE-VI</b>	
1	600-T-151
1	600-T-152
1	600-T-153
1	600-T-154
1	600-T-155
1	600-T-156
1	600-T-157
1	600-T-158
1	600-T-159
1	600-T-160
1	600-T-161
1	600-T-162
1	600-T-163
1	600-T-164
1	600-T-165
1	600-T-166
1	600-T-167
1	600-T-168
1	600-T-169
1	600-T-170
1	600-T-171
1	600-T-172
1	600-T-173
1	600-T-174
1	600-T-175
1	600-T-176
1	600-T-177
1	600-T-178
1	600-T-179
1	600-T-180
1	600-T-181
1	600-T-182
1	600-T-183
1	600-T-184
1	600-T-185
1	600-T-186
1	600-T-187
1	600-T-188
1	600-T-189
1	600-T-190

NO.	DESCRIPTION
<b>ZONE-VII</b>	
1	600-T-191
1	600-T-192
1	600-T-193
1	600-T-194
1	600-T-195
1	600-T-196
1	600-T-197
1	600-T-198
1	600-T-199
1	600-T-200
1	600-T-201
1	600-T-202
1	600-T-203
1	600-T-204
1	600-T-205
1	600-T-206
1	600-T-207
1	600-T-208
1	600-T-209
1	600-T-210
1	600-T-211
1	600-T-212
1	600-T-213
1	600-T-214
1	600-T-215
1	600-T-216
1	600-T-217
1	600-T-218
1	600-T-219
1	600-T-220
1	600-T-221
1	600-T-222
1	600-T-223
1	600-T-224
1	600-T-225
1	600-T-226
1	600-T-227
1	600-T-228
1	600-T-229
1	600-T-230
1	600-T-231
1	600-T-232
1	600-T-233
1	600-T-234
1	600-T-235
1	600-T-236
1	600-T-237
1	600-T-238
1	600-T-239
1	600-T-240

NO.	DESCRIPTION
<b>ZONE-VIII</b>	
1	600-T-241
1	600-T-242
1	600-T-243
1	600-T-244
1	600-T-245
1	600-T-246
1	600-T-247
1	600-T-248
1	600-T-249
1	600-T-250
1	600-T-251
1	600-T-252
1	600-T-253
1	600-T-254
1	600-T-255
1	600-T-256
1	600-T-257
1	600-T-258
1	600-T-259
1	600-T-260
1	600-T-261
1	600-T-262
1	600-T-263
1	600-T-264
1	600-T-265
1	600-T-266
1	600-T-267
1	600-T-268
1	600-T-269
1	600-T-270
1	600-T-271
1	600-T-272
1	600-T-273
1	600-T-274
1	600-T-275
1	600-T-276
1	600-T-277
1	600-T-278
1	600-T-279
1	600-T-280
1	600-T-281
1	600-T-282
1	600-T-283
1	600-T-284
1	600-T-285
1	600-T-286
1	600-T-287
1	600-T-288
1	600-T-289
1	600-T-290
1	600-T-291
1	600-T-292
1	600-T-293
1	600-T-294
1	600-T-295
1	600-T-296
1	600-T-297
1	600-T-298
1	600-T-299
1	600-T-300

**GENERAL NOTES:-**

1. THE BUILDING FOOTPRINTS ARE BASED ON THE COVERED AREAS SHOWN IN THE CONTRACT.
2. THE LAYOUT IS BASED ON THE ASSUMPTION THAT THE PROPOSED ROAD DIRECTION IS NORTH - WEST TO EAST AND BARRIER - SOUTH TO NORTH.
3. THE AIRSTRIP AND PLANT SHOULD BE SEPARATED BY AT LEAST 300M TREE BUFFER BELT.
4. THE AIRSTRIP SHOULD BE IN SUCH DIRECTION THAT WIND LANDING OR TRUCK OFF THE PLANTSHED NEVER FLY OVER THE PLANT.
5. APPROX AIRSTRIP SHOULD BE PROVISIONED FOR THE VERIFICATION AND NOISE LEVEL WIND LANDING AND TRUCK OFF.
6. UTILITY WATER CONNECTION TO BE PROVIDED NEAR THE WATER PIPES BY GRID.
7. PLANT IN-C CONNECTIONS ARE AS PER OGD LETTER DATED 7-3-04.
8. DRAIN LEVEL = 100.00M.
9. PROPOSED GRADE LEVEL = 87.00M AT OBSERVATION / HES PLANT AREA.
10. OBSERVATION WAS MADE BY THE SURVEYOR AT THE SURVEY LAYOUT OF THE GAS DEHYDRATION PLANT.
11. THE LAYOUT FOR THE REMOVAL PLANT TO BE PROVIDED BY OGD AND ARE SHOWN WITH SHOWN LINE.

0	2-5-2000	FIRST ISSUE	RAWA	SSA	SSA	PR
REV	DATE	DESCRIPTION OF REVISION	DESIGNED	CHECKED	APPROV	
		ENAR PETROTECH SERVICES (PRIVATE) LTD.		Job No. 14-4630		
		OIL & GAS DEV. CORPORATION		Dwg. No. 4630-PC-2205		
		UCH GAS DEHYDRATION/H2S REMOVAL PLANT		COMPILER CODE: 4-D-4630-2205-D		
		OVER ALL PLOT PLAN (AS BUILT)		SCALE: AS SHOWN		
				DATE: 14-06-2004		
				DRAWING PREPARED BY: ---		