

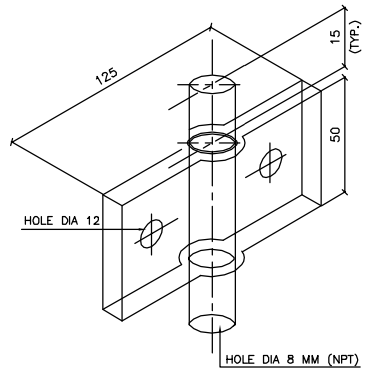
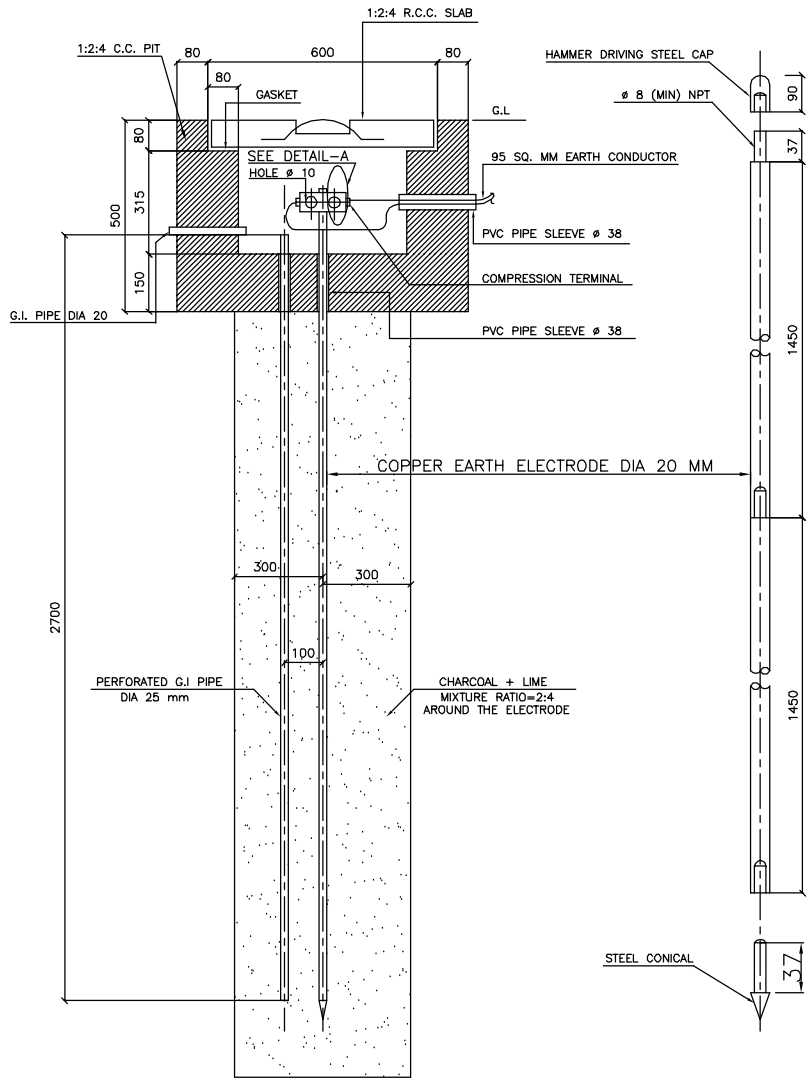
PROCUREMENT (SUPPLY), CONSTRUCTION, INSTALLATION/ERECTION, PRE-COMMISSIONING, & COMMISSIONING ASSISTANCE FOR NEW CENTRIFUGAL COMPRESSORS AND MODIFICATION WORKS OF EXISTING TURBO COMPRESSOR TRAINS FOR QADIRPUR COMPRESSION PROJECT

TENDER ENQUIRY NO. PROC-FC/CB/PROJ/QP-4369/2019

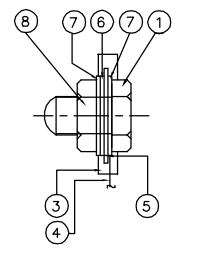
POST-BID CLARIFICATION No. OGDCL-QP-4369-022



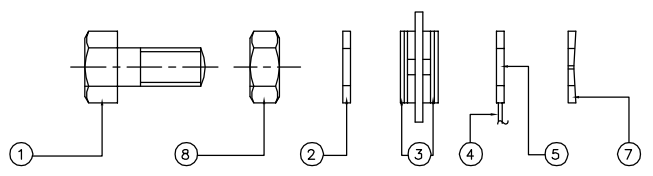
Sr. No.	Bidder Query	OGDCL/ENAR Response (08-Nov-2019)
1	Please elaborate -13.5 ft NPSHa and how it is applied/calculated for rated conditions.	It is note that the suction connection of pumps P-2501A/B are in underground Pit. Whereas, the pumps shall be installed on ground due to area restriction in pit. For calculation 10 ft elevation difference is used. Moreover, the NPSHa is calculated at suction nozzle of pumps.
2	Please specify any requirement of minimum submergence for pump in your design based on level setting.	Refer to above response, vendor shall specify minimum submergence for pumps accordingly.
3	Please clarify any boot is consider to provide static head for this pump	No boot is considered for static head, however, vendor shall provide adequate system for smooth pumps' operation.
4	Please elaborate what would be vapour pressure, when suction condition will be 80 psia.	Vapour pressure shall be considered same as suction pressure and liquid properties mentioned in datasheets is for understanding of liquid behavior.
5	Please clarify what would be suction condition when vapour pressure is 17.6 psia (min). If suction pressure is also same due to saturated condition then why 80 psia suction pressure is considered in rated condition instead of 17.6 psia.	Refer to above response of point No.4
6	Please share vessel GA or datasheet so that pump rod (length) and submergence to be checked/selected.	Refer to above response of point No.1
7	Please share P&ID so to evaluate above stated concerns and properly select the pump.	Stuffiest information is provided for bidder to quote the pumps, whereas, P&ID shall be provided to successful bidders=.



CLAMP FOR EARTH CONDUCTORS



DETAIL - A



DETAIL FOR CONNECTION OF EARTH CONDUCTOR

ITEM NO.	DESCRIPTION
1	BRASS BOLT M-10 x 30 LONG
2	WASHER FOR M-10 BOLT
3	EARTH CLAMP
4	EARTH CONDUCTOR
5	STUD M-12 FOR TERMINAL
6	WASHER FOR M-10 BOLT
7	LOCK WASHER FOR M-10 BOLT
8	NUT M-10

NOTES

- 1- ALL DIMENSIONS ARE IN mm UNLESS OTHERWISE STATED.
- 2- VENDOR SHALL ALSO PROVIDE HAMMER DRIVING STELL CAPS.

RE-ISSUED FOR BID

1	08-11-2019	RE-ISSUED FOR BID	MAA	JAB	AB	TH
0	08-07-2019	ISSUED FOR BID	MAA	JAB	AB	TH
A	27-03-2019	ISSUED FOR REVIEW & APPROVAL	MAA	JAB	AB	TH
REV.	DATE	DESCRIPTION OF REVISION	DRAWN	DESIGNED	CHECKED	APPR.
ENAR PETROTECH SERVICES (PRIVATE) LIMITED			Job No. 14-0220			
7-B, Sector 7-A Korangi Industrial Area, Karachi Pakistan TEL: (9241) 5087914 E-mail: info@enar.com.pk URL: www.enar.com.pk			Dwg. No. 0220-ELF-6801 (SHEET 3 OF 11)			
OIL & GAS DEVELOPMENT COMPANY LIMITED			QADIRPUR COMPRESSION PROJECT			
TITLE: TYPICAL INSTALLATION DETAILS EARTHING AND GROUNDING PIT			COMPUTER	0220-ELF-6801		
			SCALE	AS SHOWN		
			DATE	11/09/20		
THIS DOCUMENT IS THE PROPERTY OF ENAR & THE CONTENTS MUST BE TREATED AS CONFIDENTIAL						