

Clarification: Tender Number PROC-FE/CB/P&P/KPD-4507-A/2020

Bidder Query: Please confirm and provide the details Name Plat picture (Valve & Actuator) of installed SDV?

OGDCL reply: Attached.

Bidder Query: Please confirm whether SDV Actuator is pneumatic actuated or Electric Actuated ?

OGDCL reply: Pneumatic

Bidder Query: In Case of Pneumatic Actuated, please confirm Coil Voltage/operating voltage of SOV?

OGDCL reply: Coil voltage is 24VDC

Bidder Query: Please share model of installed SOV?

OGDCL reply: ASCO, Model EF8320G202

Bidder Query: Please confirm SOV is single operated Valve or Dual operated Valve?

OGDCL reply: Single operated

Bidder Query: For feedback signal, please confirm limit switches are installed or not? If installed, please share Data sheet / model of Limit Switch?

OGDCL reply: Limit switches are installed. Name plate data of limit switch attached.

Bidder Query: For Pressure transmitters, please confirm whether Installation of Pressure Transmitter are in vendor scope or in OGDCL Scope?

OGDCL reply: As mentioned in S#4 of SOR BOQ supply as well as installation of pressure transmitters are in bidder scope.

Bidder Query: Instrument Cables for Pressure Transmitter will be provide by OGDCL or these are in vendor scope?

OGDCL reply: As mentioned in S#4 of SOR BOQ pressure transmitters to be installed inside the panel and panel should be prewired. In case you choose to install pressure transmitters outside the panel the transmitters should be hazard area classified and wiring should be in your scope of supply as well as installation services.

Bidder Query: Instrument pneumatic tubing and pneumatic fitting accessories required from line to panel. Please confirm whether these accessories are in vendor scope or in OGCL Scope? If in vendor scope please confirm the distance from line to Panel location?

OGDCL reply: It will be in OGDCL scope of supply and installation services.

Bidder Query: Please confirm Tapping points are available at site for PT installation?

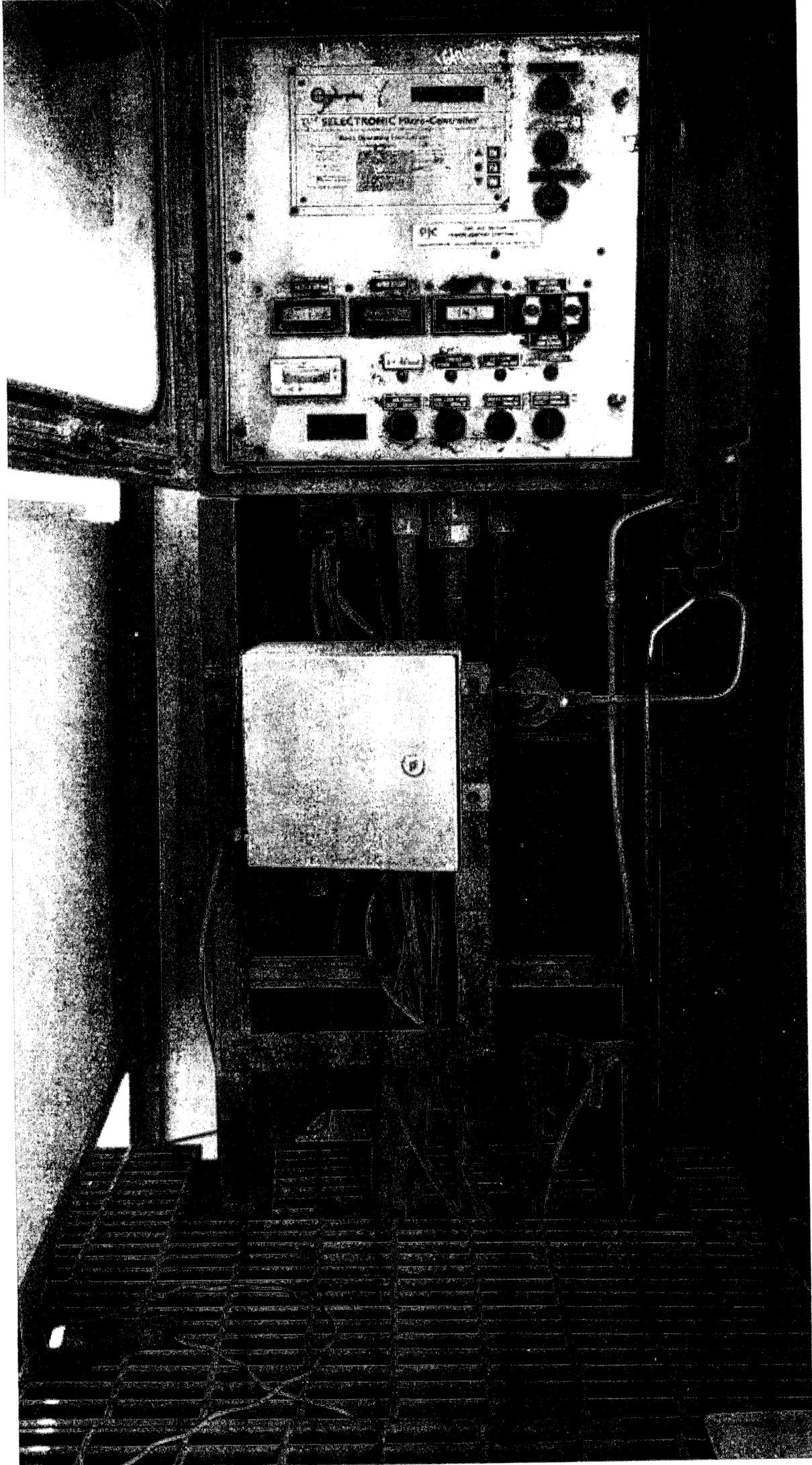
OGDCL reply: Yes

Bidder Query: Please share Site Pictures from different angles to understand the nature of job?

OGDCL reply: Attached

Bidder Query: Please confirm Field Cable Terminations at PLC Panel end in vendor scope or in OGDCL scope?

OGDCL reply: Cable laying and termination from instrument to panel is in OGDCL Scope under the supervision of vendor.



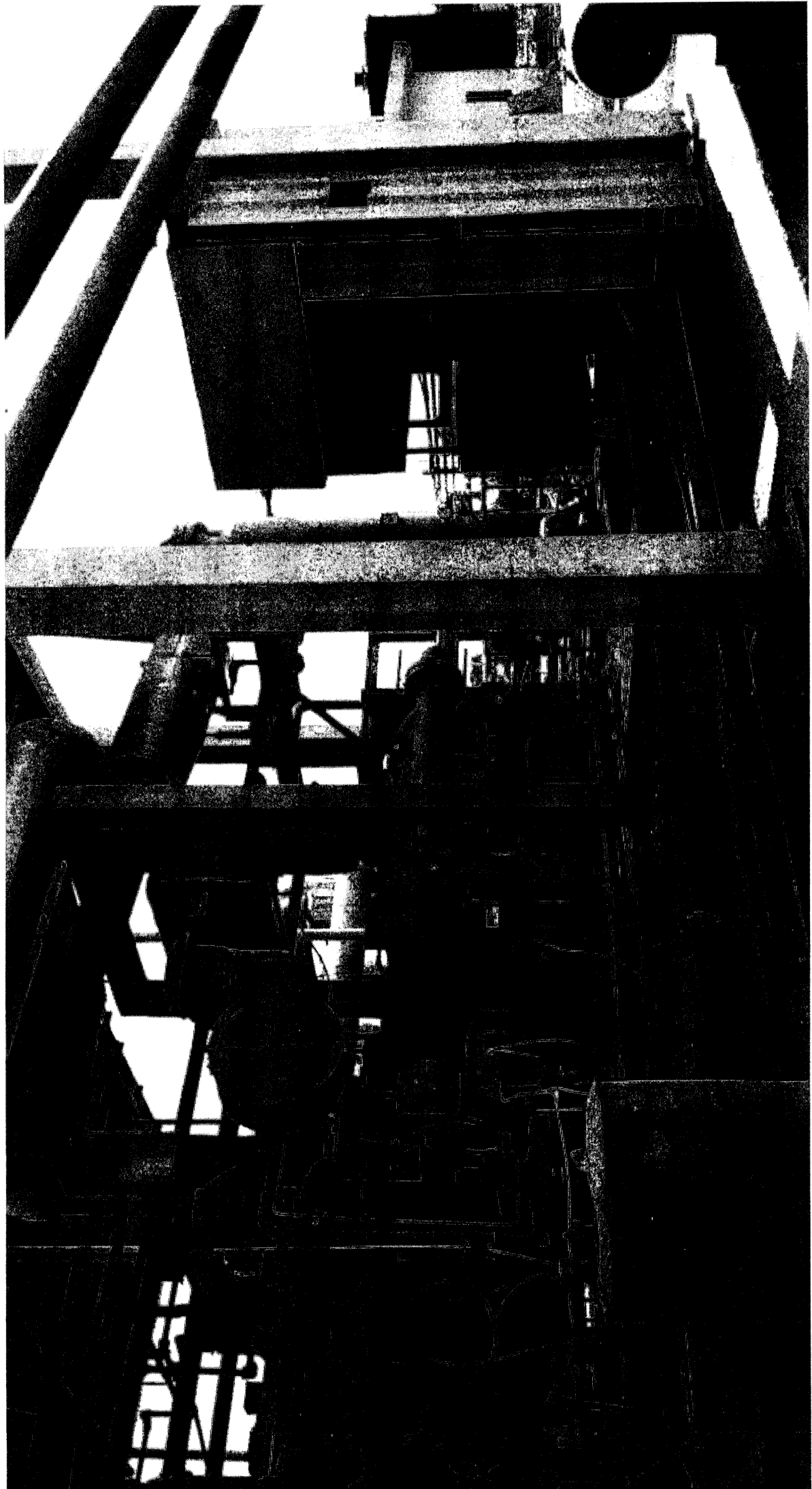
SELECTRONIC Micro-Controller
Model Operating Instructions

DNC

SELECTRONIC

SELECTRONIC

Se



2

CAUTION. TO
PREVENT IGNITION
OF HAZARDOUS
ATMOSPHERES, KEEP
UNIT TIGHT WHILE
CIRCUITS ARE ACTIVE.
DISCONNECT SUPPLY CIRCUIT
BEFORE OPENING.

Automax UltraSwitch

MFG. IN U.S.A.

MCDEL

XL21000

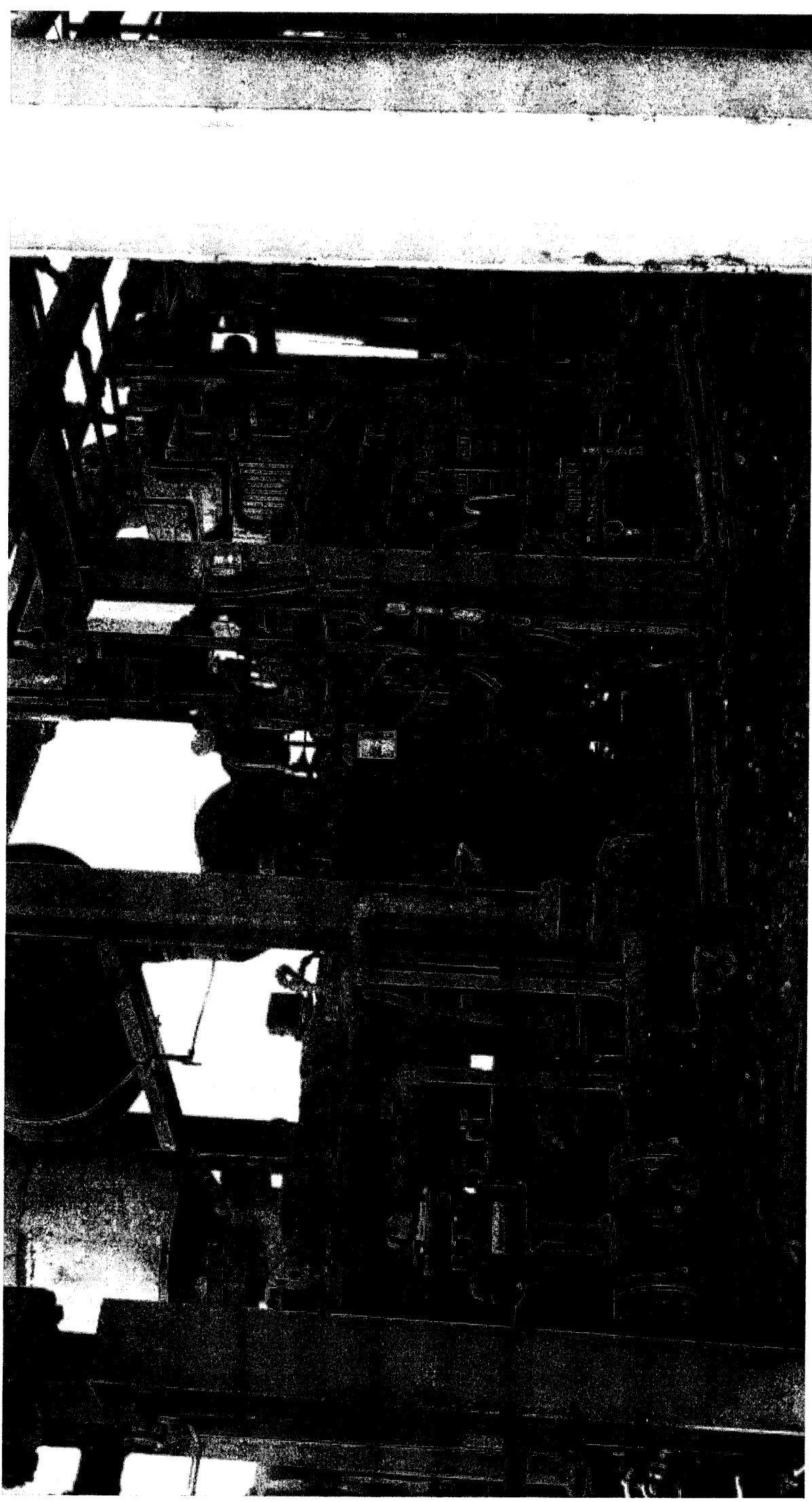
NEMA 4, 4X, 7, 8 / CSA ENCL. 4
CLASS I GROUPS C, D
CLASS II GROUPS E, F, G
DIV. 1 & 2
125VAC, 10AMP

HAZARDOUS ATMOSPHERES, CONDUIT RUNS MUST
BE 1/2 INCHES OF THE ENCLOSURE.
SEE ENCL. NAMEPLATE FOR
ADDITIONAL ELECTRICAL RATINGS.

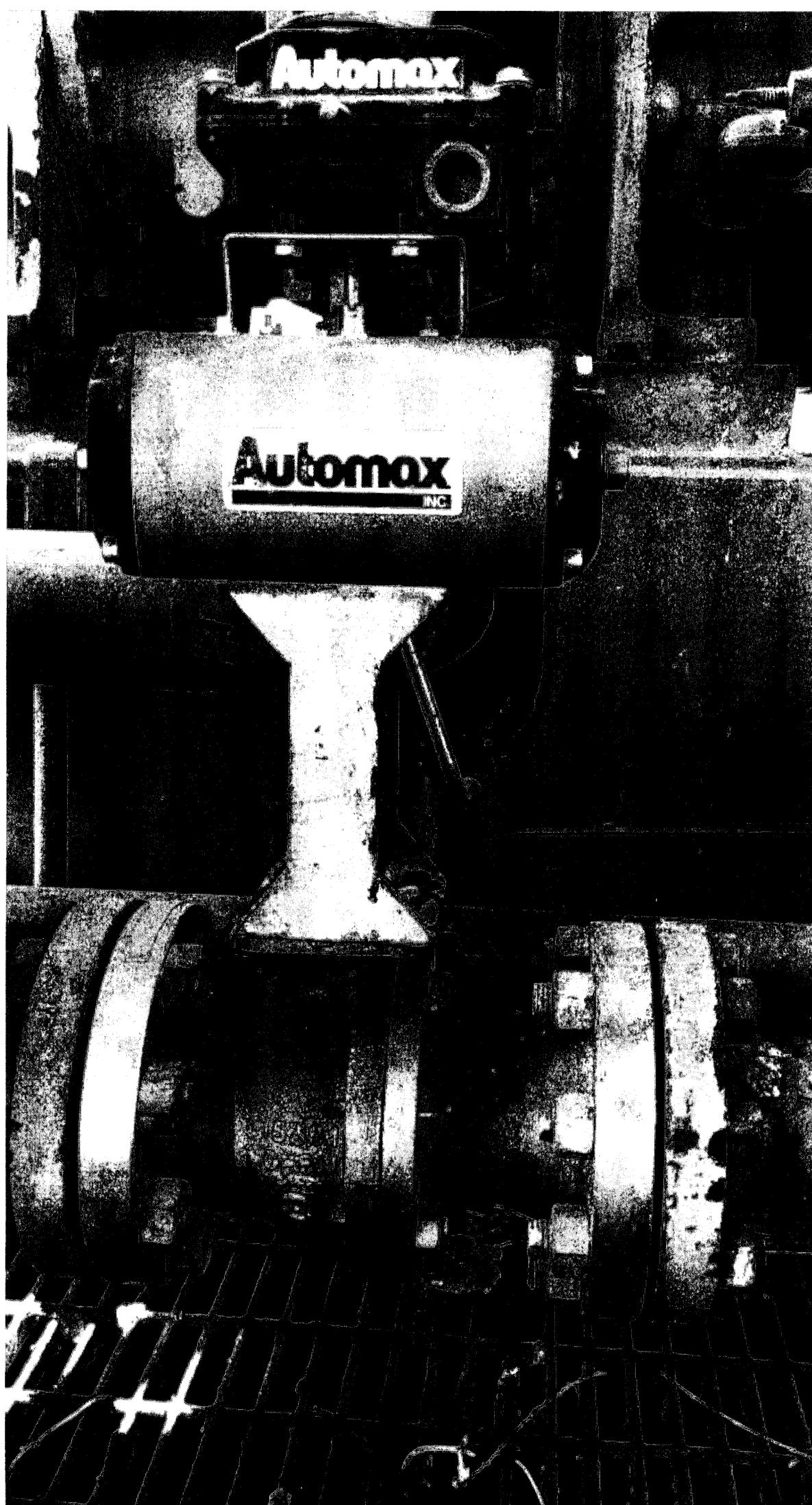
SER.

TEM

De



2



2

SERVICE CENTER
4224 BLUE BONNET DR.
STAFFORD, TX 77477
(713) 271-7800

SERVICE CENTER
7445 WHITEPINE RD
RICHMOND, VA 23232
(804) 271-7800

ITEM

CAUTION. TO
PREVENT IGNITION
OF HAZARDOUS
ATMOSPHERES, KEEP
UNIT TIGHT WHILE
CIRCUITS ARE ACTIVE
DISCONNECT SUPPLY CIRCUIT
BEFORE OPENING.

Automax

CINTI. OH USA

UltraSwitch

NEMA 4, 4X, 7, 9 / CSA ENCL. A
CLASS I GROUPS C, D
CLASS II GROUPS E, F, G
DIV. 1 & 2
120VAC, 10AMP

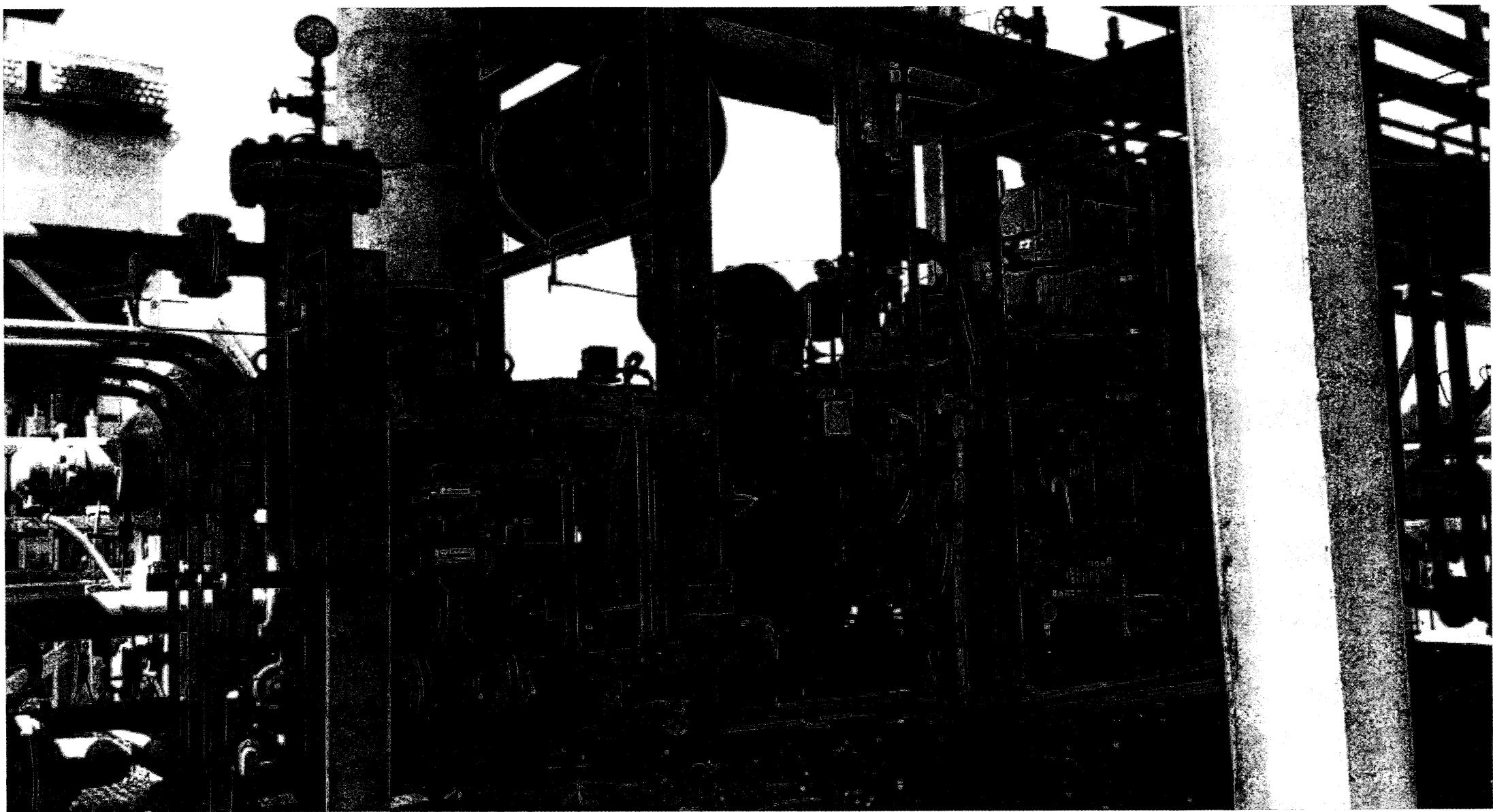
MODEL

1XL21000

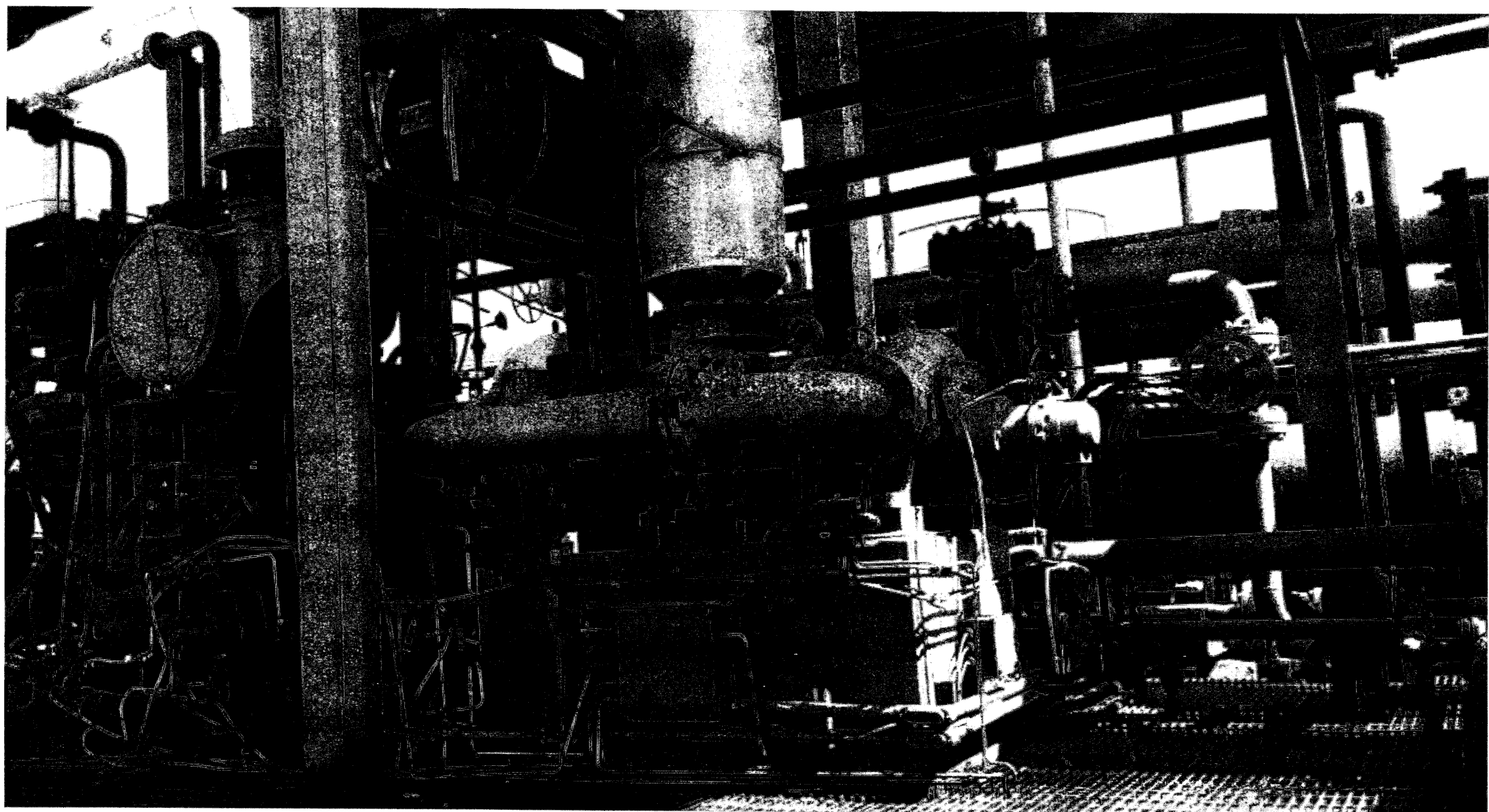
[Redacted]

WARN

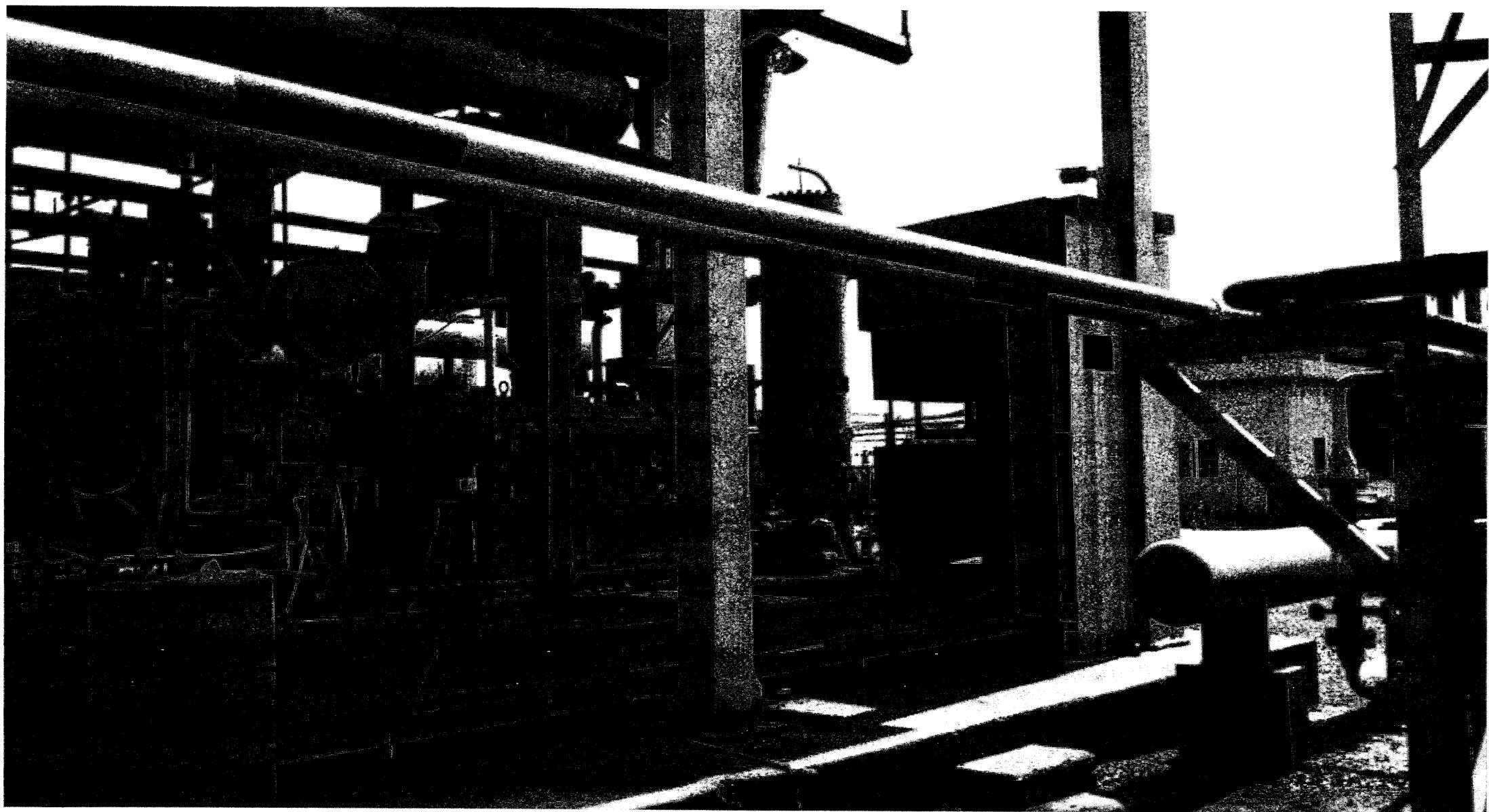
ATMOSPHERES. CONDUIT RUNS MUST
BE 1/2 INCHES OF THE ENCLOSURE
SEE QUENOID NAMEPLATE FOR
ADDITIONAL ELECTRICAL RATINGS.



2



8



8

16/05/82

SELECTRONIC Micro-Controller

Basic Operating Instructions



TO OPERATOR: This unit is to be used in conjunction with the SELECTRONIC Micro-Controller. It is designed to control the operation of the unit. The unit is designed to be used in conjunction with the SELECTRONIC Micro-Controller. It is designed to control the operation of the unit.

PIC Sold and Serviced by
POWER LIGHTON CONTROLS LTD.

EMERGENCY STOP **INTERLOCK** **START** **STOP**



SELECTRONIC



to alarm

ALARM

STOP **START** **STOP** **STOP** **STOP**



for