

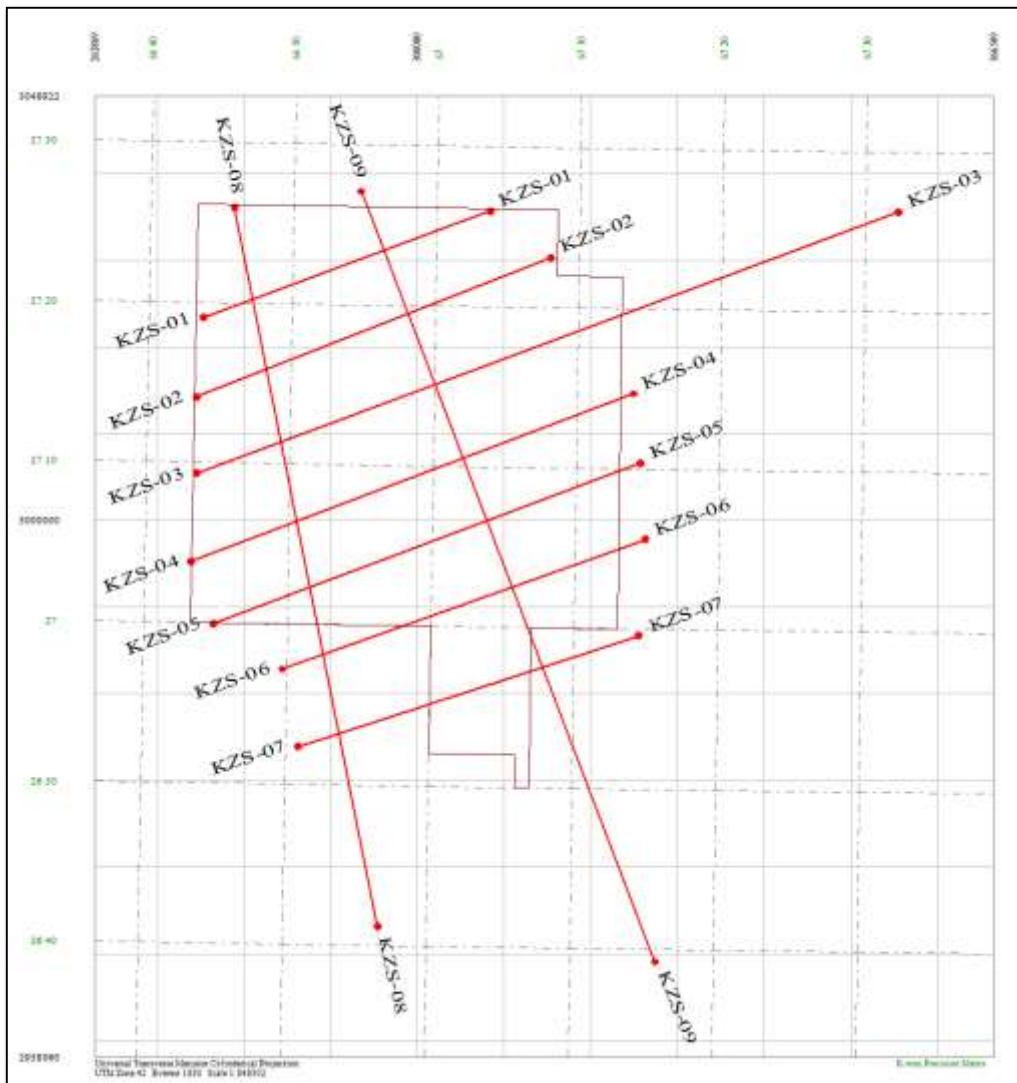
CLARIFICATION#1 AGAINST TENDER # PROC-SERVICES/CB/EXPL-4630/2020 FOR 2D SEISMIC DATA ACQUISITION OF KHUZDAR SOUTH BLOCK TENDER

Following clarifications has been made in the tender.

As per the tender document, the estimated workload for Khuzdar South is 537.7 instead of 538.28 L.km. The line location map and detailed coordinates have been also specified in tender document

1. LINE LOCTION MAP:

The total workloads is 537.7 and revised coordinates are given below;

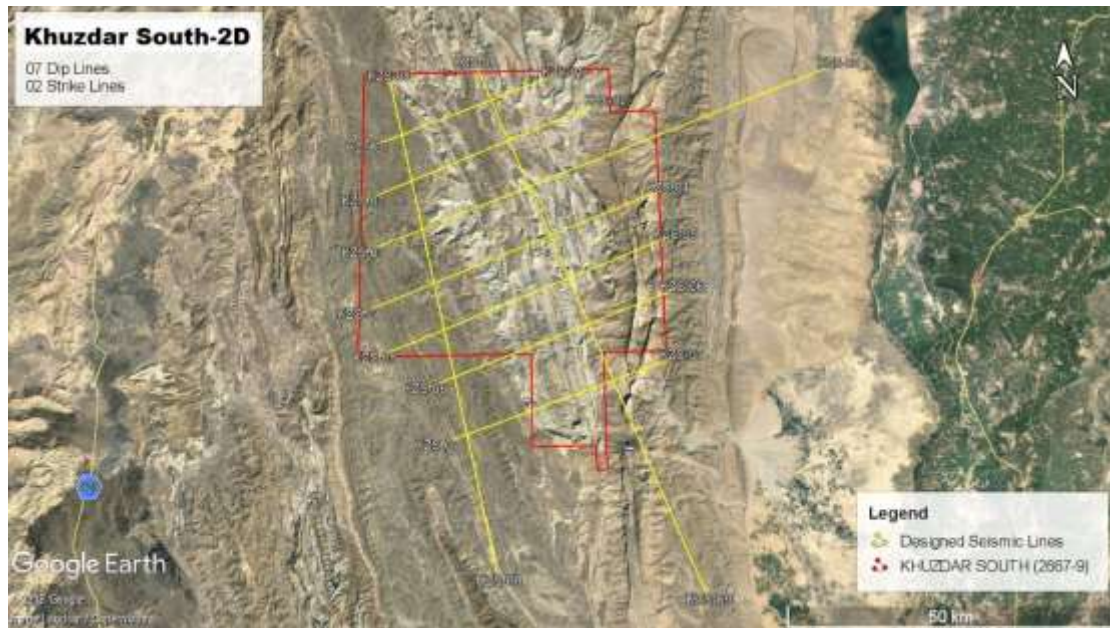


2. LINE COORDINATES TABLE

KHUZDAR SOUTH 2D
(Coordinates in Lambert Grid II-A, Everest-Kalinpur modified 1956)

Line Name	L.km		X	Y
KZS-01 (Dip Line)	35.29	START	2024721.411	1080164.433
		END	2058249.703	1091167.849
KZS-02 (Dip Line)	43.90	START	2023594.630	1071046.818
		END	2065033.657	1085548.151
KZS-03 (Dip Line)	86.27	START	2023304.111	1062259.749
		END	2105220.483	1089304.352
KZS-04 (Dip Line)	54.46	START	2022310.380	1052171.960
		END	2073934.225	1069532.613
KZS-05 (Dip Line)	52.54	START	2024594.649	1044870.421
		END	2074435.255	1061498.243
KZS-06 (Dip Line)	44.45	START	2032273.064	1039361.099
		END	2074666.204	1052726.912
KZS-07 (Dip Line)	41.25	START	2073468.756	1041642.783
		END	2028781.014	1092732.504
KZS-08 (Strike Line)	84.50	START	2042155.770	1009298.586
		END	2043462.408	1094010.114
KZS-09 (Strike Line)	95.00	START	2073930.100	1004031.107
		END	2073468.756	1041642.783
Total	537.7 L.KM			

3. The line locations mapping with the coordinates are also revised and similar to that in tender document.



Line Location Maps according to the coordinates table