

CLARIFICATION: PROC-FA/CB/PROD-4274/2019 - FILTERS ASSY FOR WATER DISPOSAL SYSTEM OF SINJHORO GAS FIELD

"The filter assemblies are required includes vessels and filter cartridges and allied accessories like pressure/temperature gauges, sampling points. The proposed P & ID is attached. Bidder may change the P & ID but the main philosophy will remain un-change. "

NOTES

1. FOR GENERAL NOTES, SYMBOLS & LEGEND 4946-PID-000

1	24-12-2018	RE-ISSUED FOR REVIEW	SAH	SGH	A.J
0	08-08-2018	ISSUED FOR REVIEW	SAH	SGH	A.J
REV.	DATE	DESCRIPTION OF REVISION	DRAWN	CHECK	APPR

**PC PETROCHEMICAL ENGINEERING CONSULTANTS**  
 C-2, BLOCK NO. 17, GULSHAN-E-NADIA, NEAR NATIONAL STADIUM, KARACHI-75300, PAKISTAN  
 TEL: +92 (21) 3497780, 34961088, FAX: +92 21 34961089, E-Mail: contact@pec.com.pk web site: www.pec.com.pk

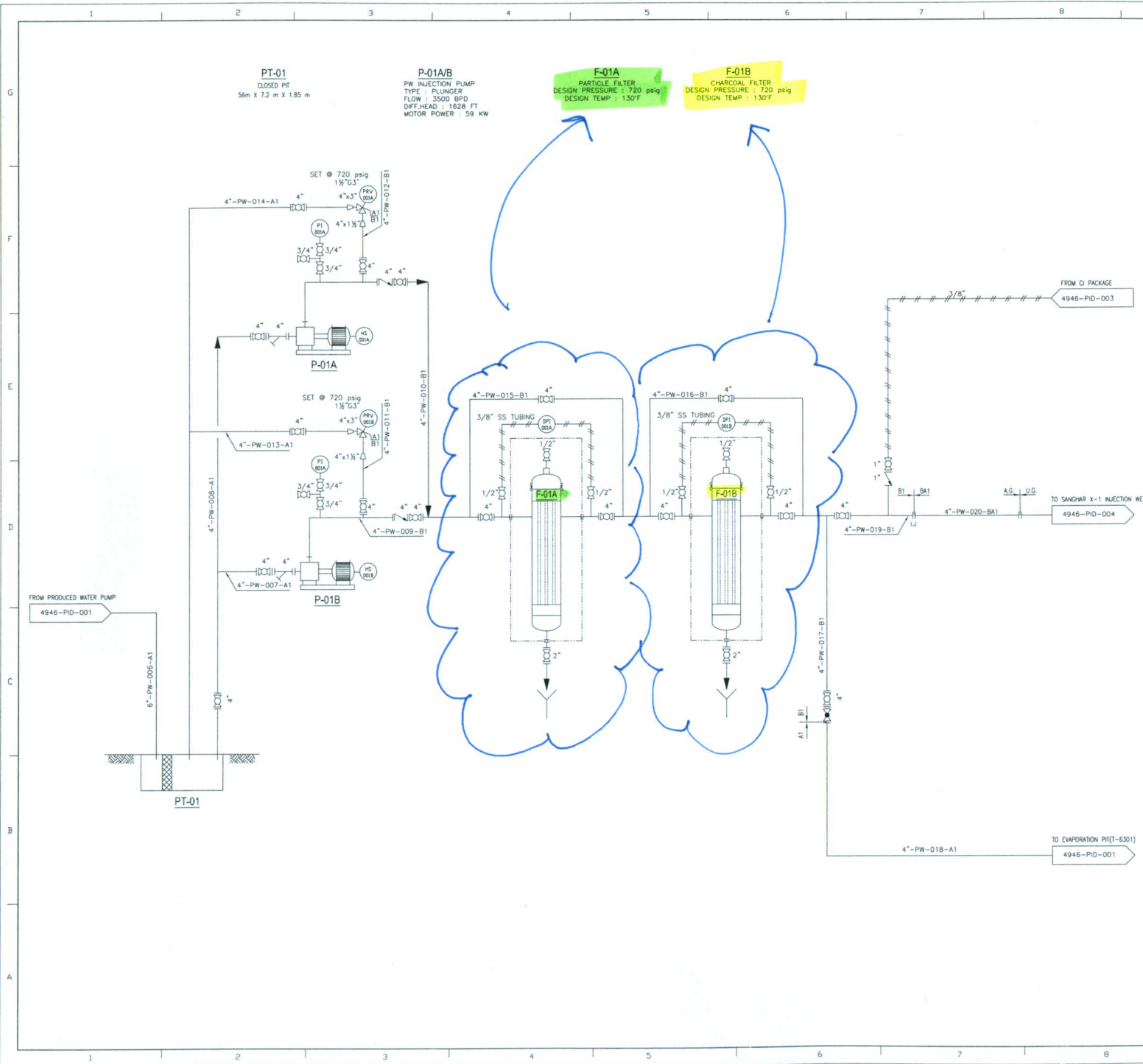
CLIENT: **OIL & GAS DEVELOPMENT COMPANY LTD.**

PROJECT: **SINJHORO PLANT PRODUCED WATER DISPOSAL**

TITLE: **PIPING & INSTRUMENTATION DIAGRAM  
PRODUCED WATER INJECTION AND TREATMENT SYSTEM**

JOB NO.	DRAWING NO.	SHEET NO.	SCALE:	SHEET SIZE	REV.
4946	4946-PID-000	1	OF 1 NTS	A3	1

THIS DRAWING AND DESIGN IS THE PROPERTY OF PEC AND MUST NOT BE COPIED OR PASSED TO ANY THIRD PARTY WITHOUT WRITTEN CONSENT FROM THE PETROCHEMICAL ENGINEERING CONSULTANTS



**PT-01**  
CLOSED PIT  
56m x 7.2 m x 1.85 m

**P-01A/B**  
PW INJECTION PUMP  
TYPE : PLUNGER  
FLOW : 3500 BPD  
DIFF HEAD : 1628 FT  
MOTOR POWER : 59 KW

**F-01A**  
PARTICLE FILTER  
DESIGN PRESSURE : 720 psig  
DESIGN TEMP : 130°F

**F-01B**  
CHARCOAL FILTER  
DESIGN PRESSURE : 720 psig  
DESIGN TEMP : 130°F

G  
F  
E  
D  
C  
B  
A

G  
F  
E  
D  
C  
B  
A

1 2 3 4 5 6 7 8 9 10