

**OIL & GAS DEVELOPMENT COMPANY LIMITED  
PROCUREMENT DEPARTMENT, ISLAMABAD  
FOREIGN SECTION B**

(To be completed, filled in, signed and stamped by the principal)

**ANNEXURE 'A'**

**Material** KIT-TUBE ASSEMBLY FOR TDS MODEL 11SA  
**Tender Enquiry No** PROC-FB/CB/DRM-4162/2018  
**Due Date**  
**Evaluation Criteria** FULL

**SCHEDULE OF REQUIREMENT**

Sr No	Description	Unit	Quantity	Unit Price (FOB)	Total Price (FOB)	Unit Price C & F BY SEA	Total Price C & F BY SEA	Deviated From Tender Spec. If Any
1	KIT, TUBE ASSY P # 30171993 (10379432-001) ASSY TDS MODEL 11SA.	Number	2					

**Note:**

- 1) **EVALUATION CRITERIA:** FULL CONSIGNMENT WISE ON CFR BY SEA KARACHI BASIS.
- 2) **TERMS AND CONDITIONS:** BIDDER IS ADVISED TO CAREFULLY READ ALL THE TERMS AND CONDITIONS OF THE TENDER DOCUMENT.
- 3) **SHIPMENT FROM ACU MEMBER COUNTRIES:** IN CASE OF SHIPMENT FROM ACU MEMBER COUNTRIES, THE LC BENEFICIARY SHOULD BE OF THAT PARTICULAR COUNTRY FROM WHERE THE CONSIGNMENT IS BEING SHIPPED.
- 4) **DELIVERY PERIOD:** THE LEAD TIME OF THE QUOTED PRODUCT SHOULD NOT BE MORE THAN 60-90 DAYS ON CFR BY SEA KARACHI BASIS AFTER OPENING OF LETTER OF CREDIT (LC).
- 5) **FOREIGN PROCUREMENT PAYMENT TERMS (COMPETITIVE BIDDING, PREQUALIFICATION AND PROPRIETARY MODE OF PROCUREMENT):**

Payment Clause of Section-III (Part-B) i.e. Conditions of Contract "Special" of Tender Document has been amended as follows:

i. **Tender value less than or equal to US\$ 200,000:**

Payment to the Contractor/ bidder in foreign currency shall be made by establishing in favor of the Contractor an irrevocable Letter of Credit (hereinafter called the L/C). 70 % Payment (s) under the L/C will be made for the FOB/ CFR / CPT (as the case may be) price of material of each shipment upon submission of the shipping documents. Balance 30% Payment will be released after receipt, inspection and acceptance of material.

ii. **Tender value more than US\$ 200,000:**

Payment to the Contractor/ bidder in foreign currency shall be made by establishing in favor of the Contractor an irrevocable Letter of Credit (hereinafter called the L/C). 80 % Payment (s) under the L/C will be made for the FOB/ CFR / CPT (as the case may be) price of material of each shipment upon submission of the shipping documents. Balance 20% Payment will be released after receipt, inspection (in addition of pre-shipment inspection) and acceptance of material.

  
**Muhammad Irfan**  
 Chief Technical Officer (RM-001)  
 OGDCL, Islamabad  
 +92519257761, 0321-8585465

**Terms & conditions**

(Attached with indent in system)

- 1- The bidders to provide O.E.M original certificate along with bid, that OEM has authorized the bidder to offer the spares against tender enquiry of OGDCL, in case the bidder is other than the OEM.
- 2- The bidder will provide with the bid last 07 years sale record for indented spares, provided by the bidder to OGDCL or other drilling companies with address, fax number and telephone number of the clients.
- 3- The required material must be according to the specifications given in SOR.
- 4- Delivery period will be 60-90 days after establishment of L.C.
- 5- Bidder will confirm & vet attached detail parts list of required "KIT-TUBE ASSY".
- 6- In case, a bidder offered kit-tube assy with superseded / replaced part numbers, bidder should be clearly mentioned in the technical bid and a certificate be provided to confirm that the parts supplied with new part numbers are 100% exact replacement (i.e. 100% compatible in design, dimensions and function/performance) to the parts mentioned in the Schedule of Requirement.
- 7- The technical evaluation will be carried on "Full consignment wise" basis.
- 8- The bidders will provide original documents along with bid, Scanned, Copy or Photo Copy will not be accepted.
- 9- Bidder will confirm that offered "KIT-TUBE ASSY" will be brand new & unused.
- 10- The offered item should be boxed & packed in compact manners to ensure safe transportation during shipment
- 11- During technical / financial evaluation any commitments, revising agreed between the indenter & bidder will be the part of P.O.

Note: All above given terms & conditions is the integral part of indent.



Muhammad Irfan  
Chief technical Officer

# ANNEXAURE "A"

Printed By: mskjjs

Printed On: 2017-12-03 03:55:19 GMT-0600

NOTES: UNLESS OTHERWISE SPECIFIED

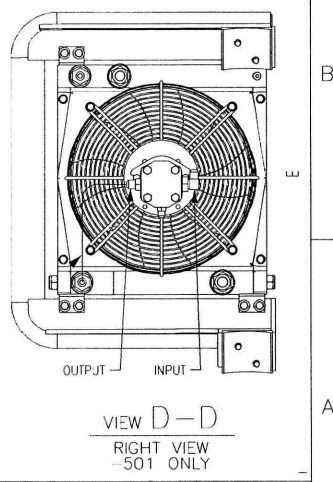
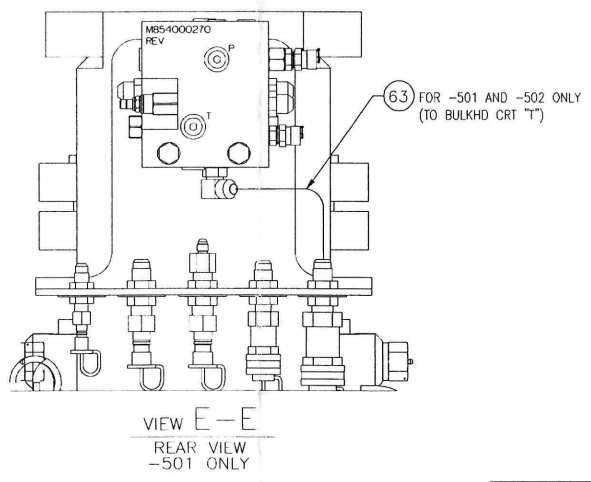
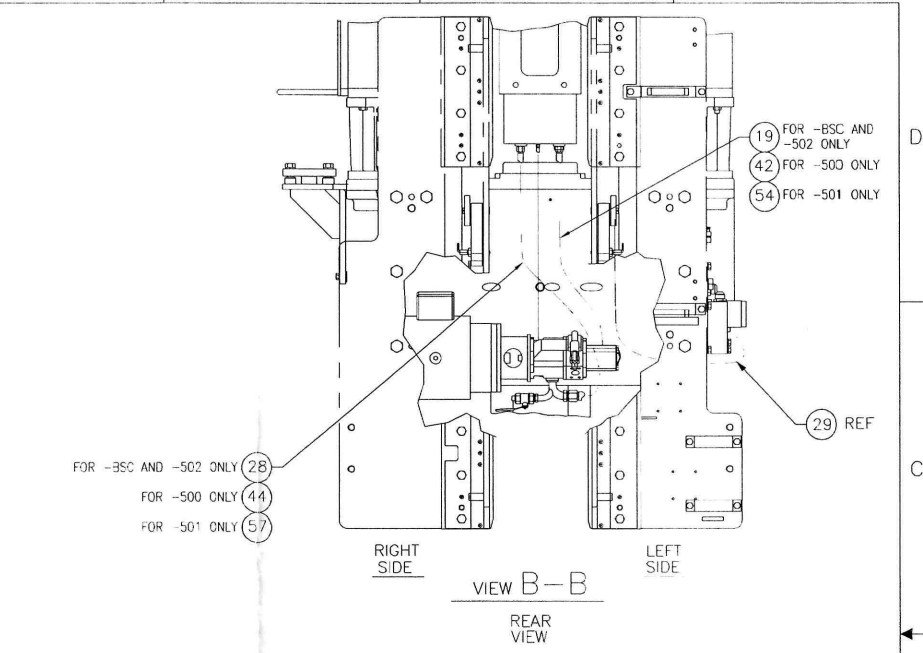
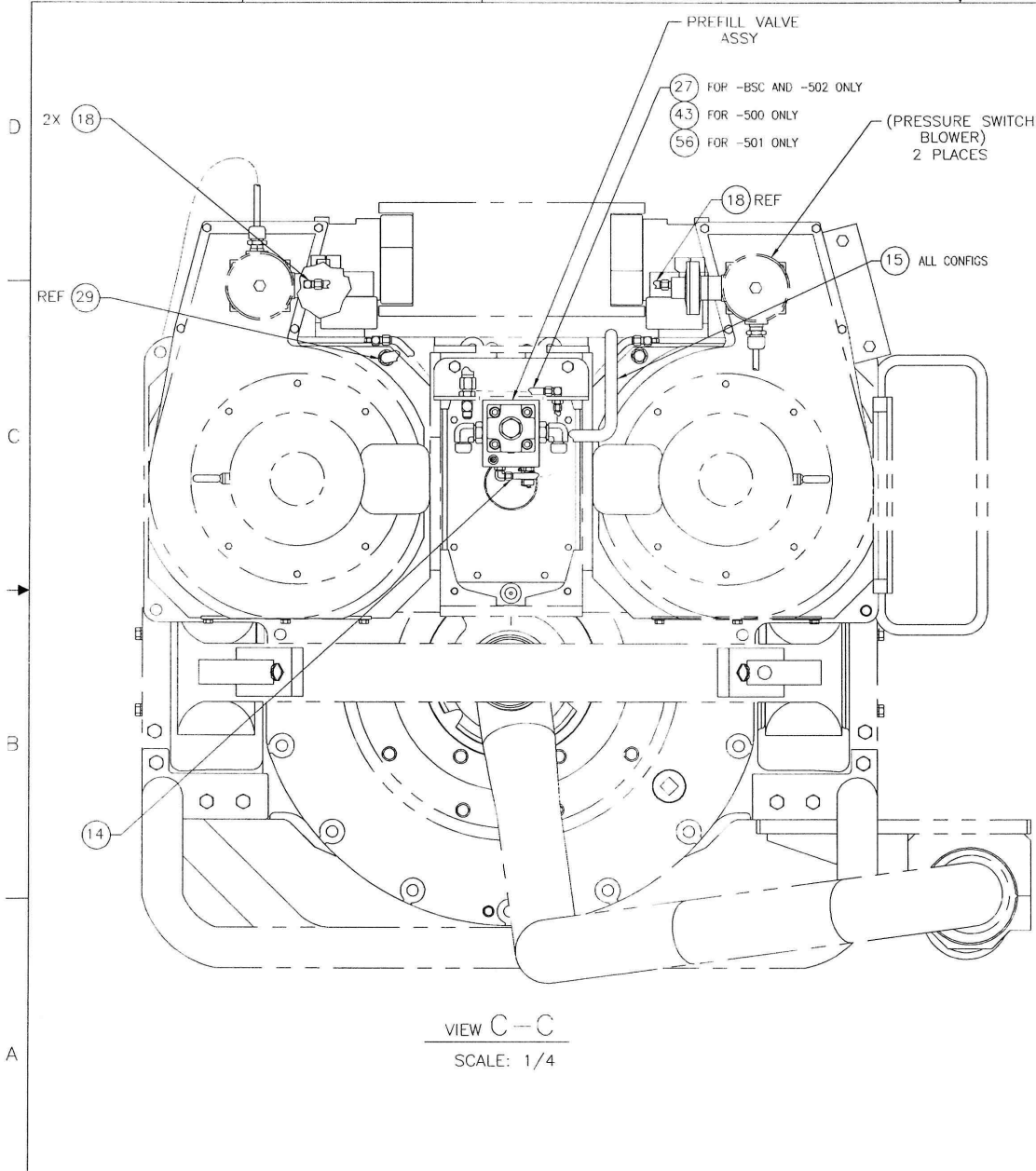
- REFERENCE HYDRAULIC SCHEMATIC DRAWING 109550 FOR TUBE CONFIGS -BSC AND -500; DRAWING 0851002556-SCH-001 FOR CONFIGS -501 AND -502; DRAWING 17487250-SCH FOR -503.
- REF: ITEMS 12 (30113982-500) AND 40 (30113982) WERE DELETED (AT REV H) DUE TO HYDRAULIC PUMP MANUFACTURER CHANGE. REXROTH WAS REPLACED WITH PARKER.
- REF: ITEMS 13 (116690), 30 (114090-502), 46 (114090), AND 58 (114090-503) WERE DELETED (AT REV L) DUE TO ACCUMULATOR RELOCATION AND CHANGE (6" TO 5" SIZE). HOSE ASSEMBLIES CAN BE FOUND IN THE HYDRAULIC/ELECTRIC ASSEMBLY DRAWINGS.

TABLE				
CONFIGURATION			NEXT ASSY	
LEGACY P/N	ORACLE P/N	PRODUCT	LEGACY P/N	ORACLE P/N
30171993-BSC	10379432-001	TDS-11SA	121403	10448643-001
30171993-500	10379432-002	TDS-9SA	110138	10445952-002
30171993-501	10394785-001	TDS-11SH	M611008868	10355356-001
30171993-502	10379432-004	TDS-11SA IDEAL PRIME	M611008868-500	10355356-500
30171993-503	10379432-005	TDS-11HD	-	17483808-001

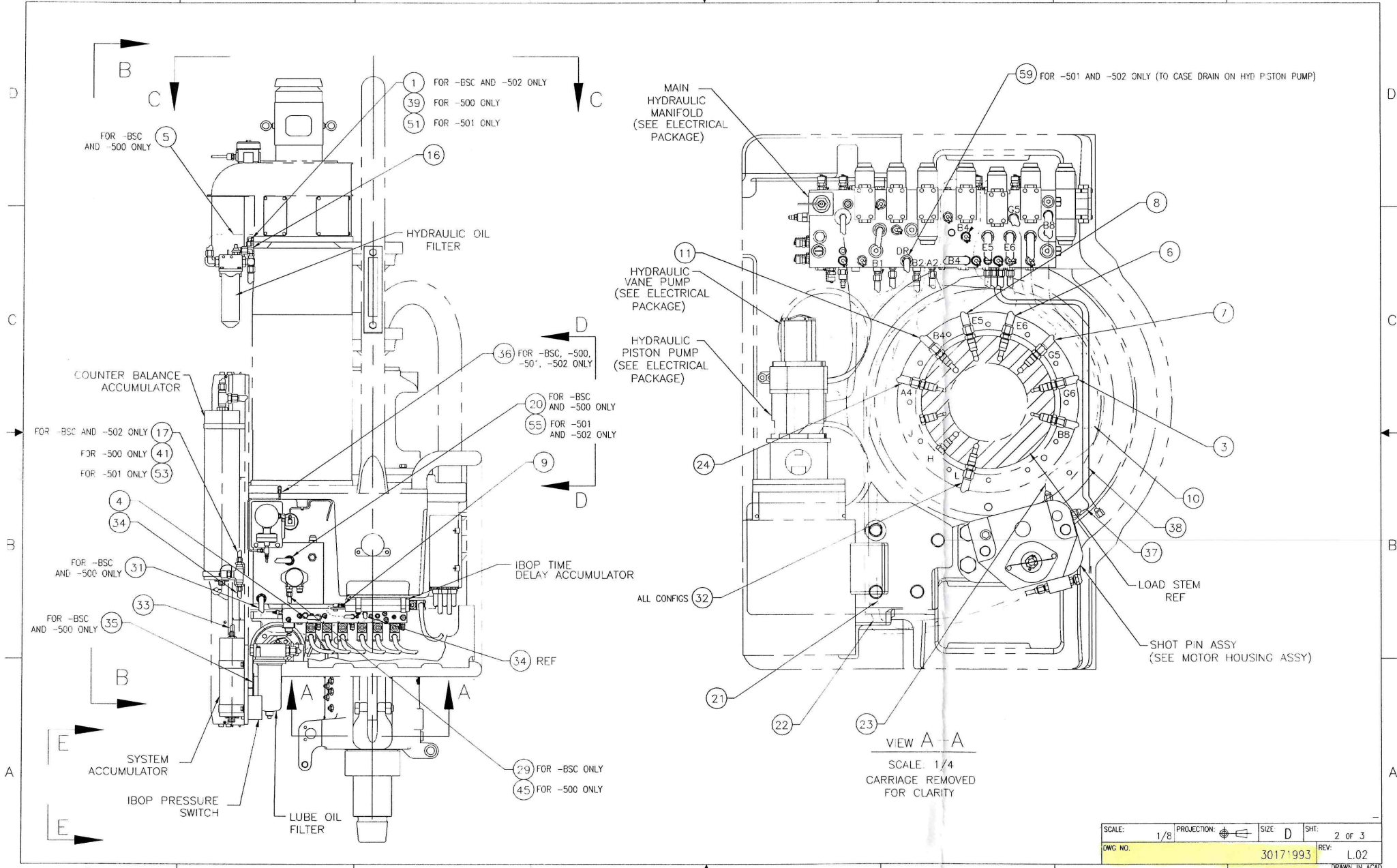
1	1	1	-	-	10684998-500	TUBE ASSY, BX ROTATE TANK	63
					DELETED		62
					DELETED		61
					DELETED		60
1	1	1	-	1	10679414-001	TUBE ASSY, CASE DRAIN TO MANIFOLD "DR"	59
					DELETED		58
1	-	1	-	-	30114086-501	TUBE ASSY, TDS-11SH	57
1	-	1	-	-	30114085-501	TUBE ASSY, TDS-11SH	56
1	1	1	-	-	30125104-501	TUBE ASSY, TDS-11SH	55
-503	-502	-501	-500	-BSC	PART NUMBER	DESCRIPTION	ASSY SEQ ITEM
L	L	L	L	QTY REQ'D	BILL OF MATERIAL		

1	-	1	-	-	117091-501	TUBE ASSY, TDS-11SH	54
1	-	1	-	-	121511-501	TUBE ASSY, TDS-11SH	53
					DELETED		52
1	-	1	-	-	118408-501	TUBE ASSY, TDS-11SH	51
					DELETED		50
					DELETED		49
					DELETED		48
					DELETED		47
					DELETED		46
-	-	-	1	-	118409	TUBE, LUBE/HE, ASSY, TDS11	3 45
-	-	-	1	-	30114086	TUBE, PUMP/RESERVOIR, TDS11	12 44
-	-	-	1	-	30114085	TUBE, PRE-FILL, MANIFOLD, ASSY, TDS9	4 43
-	-	-	1	-	117091	TUBE, RESERVOIR/PUMP, ASSY, TDS11	11 42
-	-	-	1	-	121511	TUBE, OIL-FILTER, ASSY, TDS9S	33 41
					DELETED		40
-	-	-	1	-	118408	TUBE, BRAKE/MANIFOLD, ASSY, TDS9	7 39
1	1	1	1	1	30184037	ASSY TUBE, TDS-11SA	24 38
1	1	1	1	1	30179002	TUBE ASSY	21 37
-	1	1	1	1	30178403	TUBE ASSY	34 36
-	-	-	1	1	30172006	TUBE ASSEMBLY (DIA .250)	9 35
1	1	1	1	1	121512	TUBE, ASSY, OD/MANIFOLD	30 34
1	1	1	1	1	30172005	TUBE ASSEMBLY, ACCUMULATOR/MANIFOLD	5 33
1	1	1	1	1	30125100	TUBE, ASSY, LINE ADAPTER	36 32
-	-	-	1	1	30125103	ASSY, TUBE, LUBRICATION-OUT	31 31
					DELETED		30
-	-	-	1	1	10741468-001	TUBE ASSY, LUBE/HEAT EXCHANGE (TDS11)	3 29
-	1	-	-	1	30114086-500	TUBE, PUMP/RESERVOIR, TDS11	12 28
-	1	-	-	1	30114085-500	TUBE, PRE-FILL, MANIFOLD, ASSY, TDS9	4 27
					DELETED		26
					DELETED		25
1	1	1	1	1	115426	TUBE, ASSY, MANIFOLD/LOAD-STEM	14 24
1	1	1	1	1	30125099	TUBE, ASSY, SHOT PIN	25 23
1	1	1	1	1	30171974	ASSY, MANIFOLD/SHOTPIN	23 22
1	1	1	1	1	30171975	ASSY, TUBE, MANIFOLD/SHOT-PIN	22 21
-	-	-	1	1	30125104	ASSY, TUBE, LUBRICATION-IN	32 20
-	1	-	-	1	117091-500	TUBE, RESERVOIR/PUMP, ASSY, TDS11	11 19
2	2	2	2	2	113988	TUBE, ASSY, AIR PRESSURE SWITCH	28 18
-	1	-	-	1	121511-500	TUBE, OIL-FILTER, ASSY, TDS9S	33 17
1	1	1	1	1	119029	TUBE, ASSY, PRE-FILL/FILTER	2 16
1	1	1	1	1	113985	TUBE, ASSY, RSVR	10 15
1	1	1	1	1	113964	TUBE, ASSY, ACCUMULATOR	29 14
					DELETED		13
					DELETED		12
1	1	1	1	1	115425	TUBE, ASSY, MANIFOLD/LOAD-STEM	15 11
1	1	1	1	1	117570	TUBE, ASSY, MANIFOLD/LOAD-STEM	20 10
1	1	1	1	1	118410	TUBE, ASSY, ACCUMULATOR/MANIFOLD	27 9
1	1	1	1	1	115423	TUBE, ASSY, MANIFOLD/LOAD-STEM	16 8
1	1	1	1	1	115422	TUBE, ASSY, MANIFOLD/LOAD-STEM	18 7
1	1	1	1	1	30115421	TUBE, ASSY, MANIFOLD/LOAD-STEM	17 6
-	-	-	1	1	119028	TUBE, ASSY, HEAT-EXCHANGER/FILTER	1 5
1	1	1	1	1	30113974	TUBE, ASSY, MOTOR/MANIFOLD	35 4
1	1	1	1	1	30118405	TUBE, ASSY, MANIFOLD/LOAD-STEM	19 3
					DELETED		2
-	1	-	-	1	118408-500	TUBE, BRAKE/MANIFOLD, ASSY, TDS9	7 1
-503	-502	-501	-500	-BSC	PART NUMBER	DESCRIPTION	ASSY SEQ ITEM
L	L	L	L	QTY REQ'D	BILL OF MATERIAL		

PRODUCT: TDS-11SA, 9SA, 11SH VARIES SEE TABLE UNLESS OTHERWISE SPECIFIED DIMENSIONS ARE IN INCHES. FINISH: H. CLARK DATE: 7/28/2017		THIS DOCUMENT CONTAINS PROPRIETARY AND CONFIDENTIAL INFORMATION BELONGING TO NATIONAL OILWELL VARCO. IT IS HEREBY FORWARDED TO YOU FOR YOUR INFORMATION ONLY AND REMAINS THE PROPERTY OF NATIONAL OILWELL VARCO. IT IS TO BE USED FOR THE EXCLUSIVE PURPOSE OF THE TRANSACTION DESCRIBED HEREIN AND IS NOT TO BE REPRODUCED, COPIED, OR TRANSMITTED IN ANY MANNER WITHOUT THE WRITTEN PERMISSION OF NATIONAL OILWELL VARCO. THE INFORMATION CONTAINED HEREIN IS NOT TO BE USED FOR ANY OTHER PURPOSES AND IS NOT TO BE DISCLOSED TO ANY OTHER PARTY WITHOUT THE WRITTEN PERMISSION OF NATIONAL OILWELL VARCO.	
UNLESS OTHERWISE SPECIFIED: TOL: ± 0.06 SURF: 250 100%		TITLE: KIT, TUBE ASSY, TDS-11SA, 9SA, 11SH SCALE: 1/8" PROJECTION SHEET: 1 of 3 PART NO: 30171993 REV: L02 DRAWN: IN ACAD RS-MECH-12/03/17/06/09	



SCALE:	1/8	PROJECTION:		SIZE:	D	SHT:	3 of 3
DWG NO:	PART NO.-KIT-TYPE ASSY		30171993	REV:	L.02	DRAWN IN ACAD RS-MECH.dwg/Rev:02	



SCALE:	1/8	PROJECTION:		SIZE:	D	SHT:	2 of 3
DWG NO.:	3017'993			REV:	L02		
				DRAWN IN ACAD		RS-MECH/04/10/09	