

**OIL & GAS DEVELOPMENT COMPANY LIMITED
PROCUREMENT DEPARTMENT, ISLAMABAD
FOREIGN SECTION E**

(To be completed, filled in, signed
and stamped by the principal)

ANNEXURE 'A'

Material TYRES FOR NOMAD-65 VIBRATORS
Tender Enquiry No PROC-FE/CB/EXPL-3031/2017
Due Date
Evaluation Criteria FULL

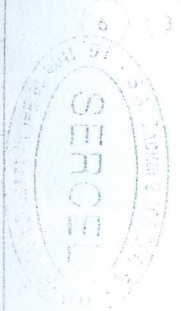
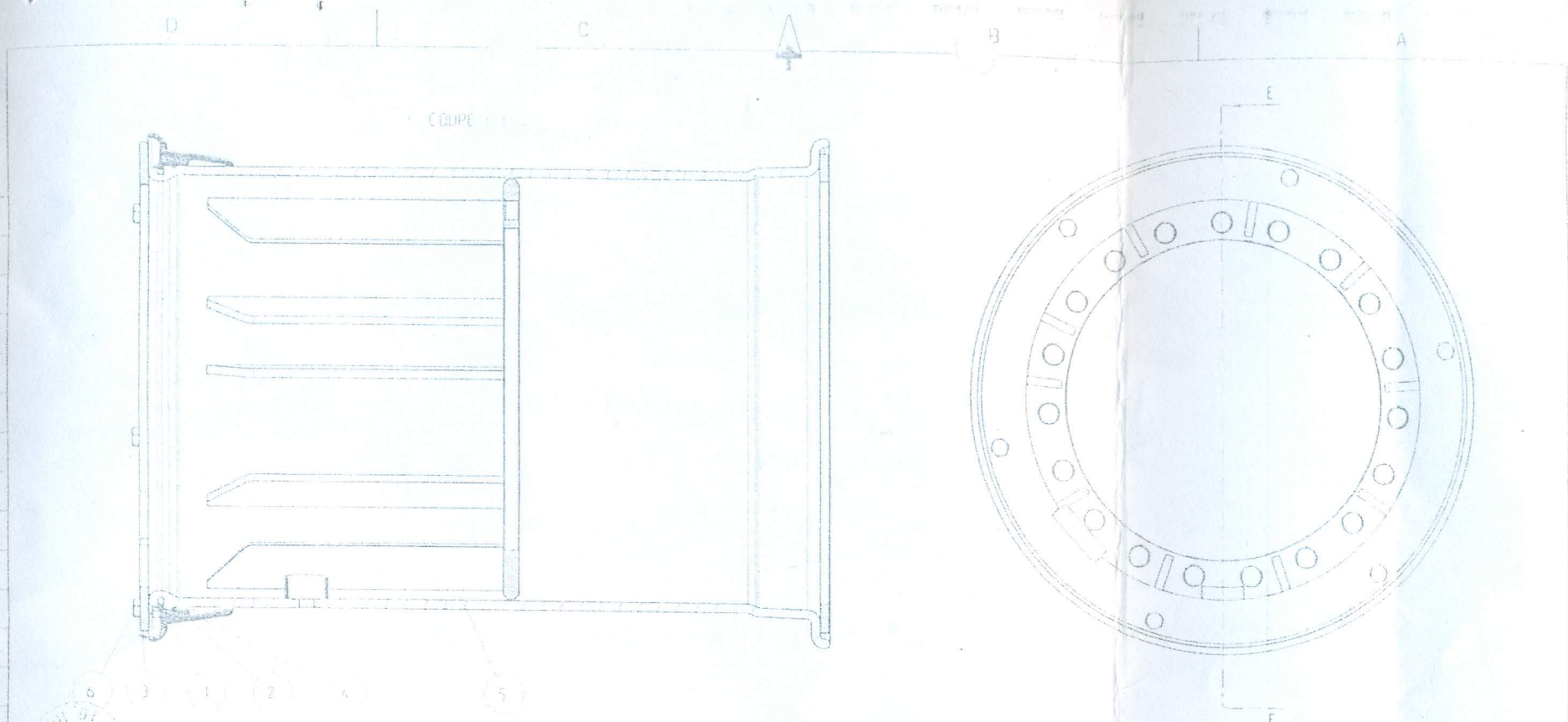
SCHEDULE OF REQUIREMENT

Sr No	Description	Unit	Quantity	Unit Price (FOB)	Total Price (FOB)	Unit Price C & F BY SEA	Total Price C & F BY SEA	Deviated From Tender Spec. If Any
1	TYRE WITH OUT RIM BRAND NEW, SIZE- 1000/25 R25 EQUIVALENT TO 66-43-25 (PR 18-20) MUDDY TYRE, FOR 19 HOLE IN RIM, STUD SIZE M22X1.5 FOR OMSI AXLE (Drawing attached) REQUIRED FOR NOMAD-65 VIBRATOR (Detail spec. terms&conditions attached).	Number	25					

Note: (1) PURSUANT TO TENDER CLAUSE # 2.2, 11.4, 13 & 35.3.2, BID BOND AMOUNTING TO US\$ 1,400/- (US DOLLAR ONE THOUSAND FOUR HUNDRED ONLY) SHOULD BE SUBMITTED WITH THE TECHNICAL BID (2) EVALUATION CRITERIA : FULL CONSIGNMENT WISE ON C&F BY SEA, KARACHI (3) TECHNICAL SPECS, T&Cs AND DRAWING ATTACHED (4) DESIRED DELIVERY PERIOD : 90 DAYS

Oracle attachment requisition No.EW-247/17/003B/2017 dated: 13-03-2017 for procurement of Muddy Tyres for (NOMAD-65 Vibrators)

Sr.No	DESCRIPTION	PART No.	UNIT	QTY	INDEX No.
1.	<p><u>MUDDY TYRES FOR NOMAD-65 VIBRATORS</u></p> <p>BRAND NEW TYRES SIZE 66X43X25 (PR-18-20) WITH OUT RIM,FOR 19 HOLE IN RIM size 25 HT/1.5,STUD SIZE M22X1.5 FOR OMSI AXLE (Drawing attached)REQUIRED FOR NOMAD-65 VIBRATORS approximately Vibrator weight (31000 KG) having the following specifications.</p> <ul style="list-style-type: none"> • Tyre size. = 66-43-25.00 (PR-18-20) • TT/TL = Tube less • Design = MUDDY Tyre • Rated Speed = 30 MPH (max) • Rated Load (Lbs)Max = 23610 • Recommended Rim size(in) = 25 HT/1.5 <p>2. TUBES <i>mg 25/8 being not Required</i> • To be fitted with tyre size 66 43-25.</p> <p>3. <u>Terms and conditions:-</u></p> <ul style="list-style-type: none"> ➤ OEM certificate must be provided by the bidder along with the bid. ➤ Material must be warranted for a minimum period of one year starting from the date of inspection in Pakistan. ➤ The bidder must be provided sale record of quoted tyres. Also provide brochure of quoted tyres. ➤ Sr. /No. & date of manufacturing should be clearly embossed on each Tyre. ➤ E-mail, Postal address and Fax No of the manufacturer/bidder must be provided with the bid. ➤ Third party pre-shipment inspection may be carried out at manufacturer premises as per OGDCL procedure (if applicable). ➤ Delivery Period : 90 days 	F/D	Nos.	25	F/D



St Michel

REP. N°	QTE	DESIGNATION	REPERENCE / SPECIF. LA PART NUMBER - SPECIF.	QTE
1		LOCK		
2		JT MICHELIN DR 3 25	SOLIA REF 1437	
3		BRIDE DE MAINTIEN		
4	PF003	CERCLE LATÉRAL	SERCEL	
5	PF004	SOUDEGE JANTE 36,25 SANS W.W	SERCEL	
6		BOUT. NR 5/8 11 X 1-RC 65	790002948	

REV D/T	CREATION	GUILLOU	21-Feb-92	DATE	VISA	APPROUVE	DATE	VISA
	NATURE DE LA MODIFICATION TYPE OF MODIFICATION	DESIGNÉ/ÉCRITURE (DRAWN/WRITTEN)				APPROUVE (APPROVED)		
	NATURE/TREATMENT TRAITEMENT/TREATMENT							
	TITRE/TITLE	LE PLAN ORIGINAL SIGNÉ EST AU PLANT						
	NOMAD							
	JANTE COMPLETE SANS W.W.							
	Sercol	SERCEL ETABLISSEMENT DE SAINT GAUDENS PE003 604510123						

Ref trailing mail, required clarification/information are as below:-

1. Rate Loaded LBS Maximum=23610 is almost correct.
2. Rim Size= 25HT/1.5 is OK as per SOR . Rim size already attached with SOR.
3. Tyres Seals are not need/demanded.
4. Tyres size 66*43.00-25 Muddy/Lug tyres are required as per SOR
5. Presently Tubes no need being tubeless tyres demanded.

A.O.A

Ref M/S Shahzad International E-mail dated August 11, 2017. Required Clarification is as under:-

Brand new Fresh Muddy/lug tyres Qty. 25 Nos. instead of 25 set without tubes and Without Rims are required .

Correct Tyres size is 66-43-25(PR-18-20) **for** 19 hole Rim Stud size M22x15 OMSI Axle .