

OIL & GAS DEVELOPMENT COMPANY LIMITED



TENDER ENQUIRY NO. PROC-SERVICES/CB/EXPL-4886/2020

2D SEISMIC DATA ACQUISITION KOHLU

Note:

Bid bond of **USD 317,000/- (US Dollar Three Hundred Seventeen Thousand Only)** must be submitted with the technical bid. Please see tender documents for further detail.

The master set of tender documents (services) uploaded on OGDCL website (www.ogdcl.com) is the integral part of this TOR.

TERMS OF REFERENCE (TOR)
FOR
2D SEISMIC DATA ACQUISITION
KOHLU-2D PROJECT



Oil & Gas Development Company Ltd.
2D SEISMIC REFLECTION SURVEY OF KOHLU E.L (2968-3) BALOCHISTAN -
PAKISTAN

GUIDELINES FOR THE BIDDERS

1. Oil and Gas Development Company Limited (Hereinafter referred to as “the Company”) intends to carry out seismic reflection survey in Exploration Lease Area under petroleum concession agreement over onshore in KOHLU E.L. Baluchistan (2968-3) and invites bidder to submit their firm proposals for conducting 2D Seismic Reflection Survey as per Schedules of TOR on turnkey basis using Dynamite/Vibroiseis as source of energy.
2. Data acquisition will be for a work program as defined in Schedule– A. The bidder must have experience in acquiring seismic data in such area and must provide detail of projects conducted.
3. Area information including environmental characteristics is important to understand before recording data.

“The bidder is required to conduct a detailed reconnaissance of the area physically prior to submission of the bid and submit reconnaissance report with the technical bid proposal without which the bid will be declared as non-responsive and will be rejected.”

4. The seismic acquisition program shall be carried out in proper manner as per international Oil and Gas industry environmental and safety standards and in accordance with good geophysical practices. The parameters mentioned in Schedule–B for guidelines only and final parameters will be decided after experimentation in the field.
5. For the purpose of carrying out the seismic survey, the contractor shall provide and maintain a basic operating unit consisting of personnel, equipment supplies and services adequate to carry out the survey on continuous basis.
6. The basic operating unit shall be required to be mobilized immediately after award of job and to commence survey work forthwith.
7. The basic operating unit shall be required to carry out the work on a continuous basis till accomplishment of the program.
8. The contractor shall be required to comply with and conduct all operations in accordance with all applicable laws and Governmental orders, rules and regulations of Pakistan and of the Political Sub-Division, in which work is to be performed including, but, not limited to income tax laws and regulations, workmen’s compensation laws, employer’s liability laws, insurance laws, wage and working hours laws, safety rules and any regulations pertaining to the conduct of seismic operations in Pakistan.
9. Bidder/Contractor shall arrange for/provide and bear full costs of the following:
 - 9.1 Mobilization /demobilization.
 - 9.2 Basic operating unit, personnel’s salaries/wages, bonuses, allowances, other benefits prescribed by law, entities, facilities, accommodation, messing, social insurance, medical services, leaves, traveling and transportation ,etc.
 - 9.3 All necessary land entry permits and fees and any other permits required by local authorities.
 - 9.4 All import licenses, custom duties, sales tax and surcharges, if any/ bonds for the entry and exit of all contractor’s equipment and supplies, port dues, octroi, handling expenses and agency fees, contract registration fees and all other levies fees, taxes or charges assessed against contractor.

- 9.5 All income taxes levied in connection with the contract on contractor's income and on the income of contractor's basic operating unit personnel whether in contractor's home country or in Pakistan.
- 9.6 Arrange / manage maintenance and repair of all the equipment that is part of basic operating unit.
- 9.7 All the necessary fuel and lubricants requirements of the crew.
- 9.8 Magnetic tapes used by field recorders, monitor paper, chemicals, films and photographic paper, survey supplies such as beacons, cement and flagging including materials for survey pegs.
- 9.9 Office/Warehouse rent, utilities, services and supplies, etc.
- 9.10 Technical and logistic support and supervision.
- 9.11 Furnishing of boarding and lodging in the field for max of four company representatives.
- 9.12 Transportation facilities (One A/C fitted 4x4 vehicles) should be permanently reserved for company representative deputed in the field and should be provided by the contractor. The same should be planned and included in the bid.
- 9.13 Delivery of all recorded data on LTO3/LTO4 cartridges with three copies (SEG-D) to OGDCL Head Office, Islamabad.
- 9.14 All replacement costs of basic operating unit, personnel deemed unqualified by OGDCL and of any unserviceable equipment which is part of basic operating unit.
- 9.15 Settlement of all claims for land damages resulting from survey, which are caused by negligence on the part of contractor's basic operating unit personnel, or, by source/explosives.
- 9.16 Primary survey control and material for permanent markers as required by OGDCL.
- 9.17 Explosives, detonating cord, detonators and firing line including their transport to the area of operations, handling and storage including licenses for explosives, radios, transport and equipment, work permits, residence, visas and fees.
- 9.18 Telephone/ Tele fax contact from field to OGDCL Head Office and as well as mobile telephone facility to OGDCL representative in the field for the communication with OGDCL Head Office. The same will be provided by the contractor.
- 9.19 Health, Safety & Environment: - The OGDCL expects that these issues will be handled with adequate care and the OGDCL has to be thoroughly satisfied prior to award of the contract.
- 9.20 Carry out and document an Environmental Health and Safety audit of facilities, and operational procedures to OGP standards.
- 9.21 Carry out and document a Technical audit of all recording equipment and systems including ground equipment and recording instruments.
- 9.22 Include on site camp medical facilities including a qualified on site paramedic and or nationally certified Medical doctor.
- 9.23 Implement and document an Emergency Response Plan to have arrangements in place to initiate a medical evacuation of an injured or person requiring medical treatment beyond the scope of the onsite paramedics and seismic base camp facilities.
10. Technical and Financial Quote should be for Seismic Data Acquisition using Dynamite/Vibroiseis as source of energy and should also include up hole / refraction survey for static correction control including line clearance, security, Land permitting / Crop Compensation, geodetic computations and on-site seismic data processing up to Post/ Pre STM level with Fast track data processing facility in the field or processing center etc.
- 10.1 List of personnel (Expatriate and local staff/ labor proposed to be included in basic operating unit along with their qualification/experience).

- 10.2 Detailed list of equipment including recorder, ground electronics, vibrators, drilling units, survey, communication, bulldozers, workshop, camp and office etc. Also specify number of vehicles and their types to be employed for the operation and give details.
 - 10.3 Likely date of mobilization and commencement of work.
 - 10.4 Approximate duration for completion of the survey. And complete schedule of work Program in tabulated form.
 - 10.5 Work experience in Pakistan as well as in the area of operations.
 - 10.6 The contractor is advised at its own expense and security arrangements to conduct reconnaissance of the area for knowing the actual topographic and other field conditions of the area and submit reconnaissance report along with bid proposals.
- 11 Standard insurance coverage to be taken out and kept in full force and effect for the full duration of the contract to cover all of contractor's liabilities under the contract.
Such insurance should be with insurance carriers and up to limits prescribed by law and satisfaction to the Company.
 - 12 Bidders may seek clarification from OGDCL before the Tender documents are submitted. However, once the tender document is received changes / modifications in the proposal will not be entertained by OGDCL unless they are by way of amplification of the bid and of no substantive nature and in any event do not involve a change in the commercial offer. Similarly, OGDCL reserves the right to have discussions with any bidders in order to seek clarification and implication of the bid.
 - 13 Contractor will be also responsible for transport, accommodation and food for the security agencies that will provide security Cover to the Contractor's Crew/Employees, Company Representative, and all Crew's equipment.

LIST OF SCHEDULE

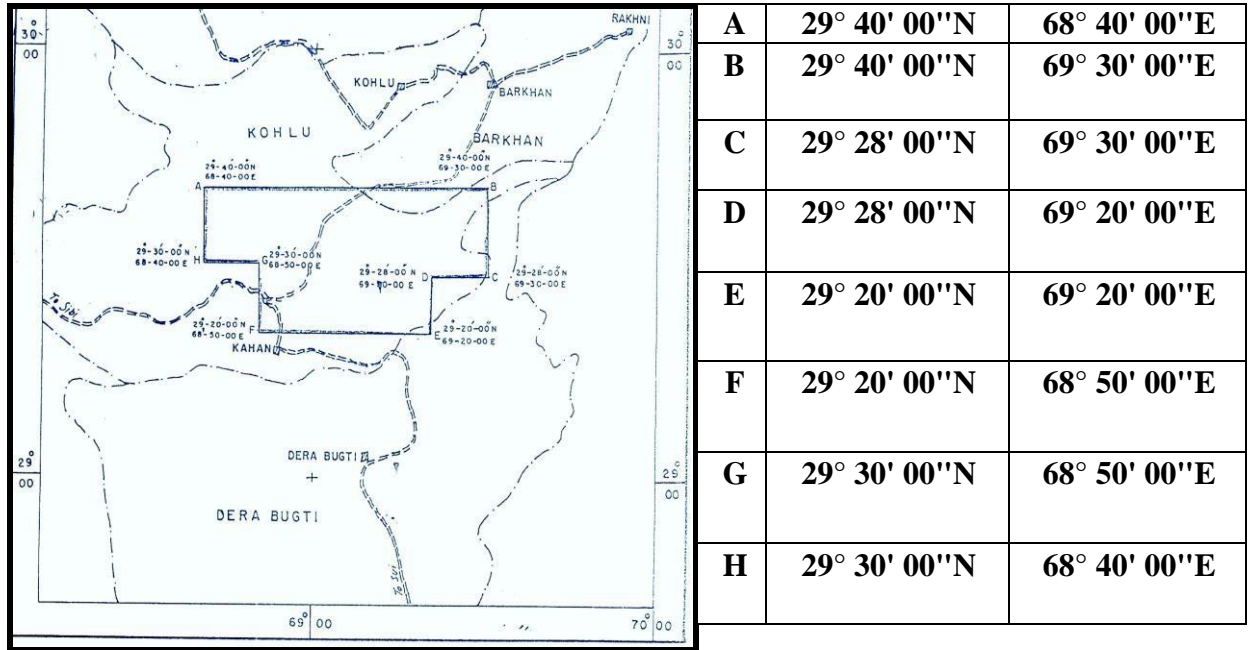
Schedule – A	SCOPE OF WORK
Schedule – B	TECHNICAL SPECIFICATION AND PARAMETERS
Schedule – C	PERSONNEL AND EQUIPMENT
Schedule – D	TEST AND QUALITY CONTROL STANDARDS
Schedule – E	RATES FOR 2D SEISMIC DATA ACQUISITION
Schedule – F	COMMUNICATIONS & REPORTS
Schedule – G	HEALTH, SAFETY AND ENVIRONMENT
Annexure- I	CHECK LIST
Annexure-II	TECHNICAL PROFORMA TO BE FILLED BY THE BIDDER
Annexure-III	TECHNICAL EVALUATION CRITERIA

SCHEDULE - A

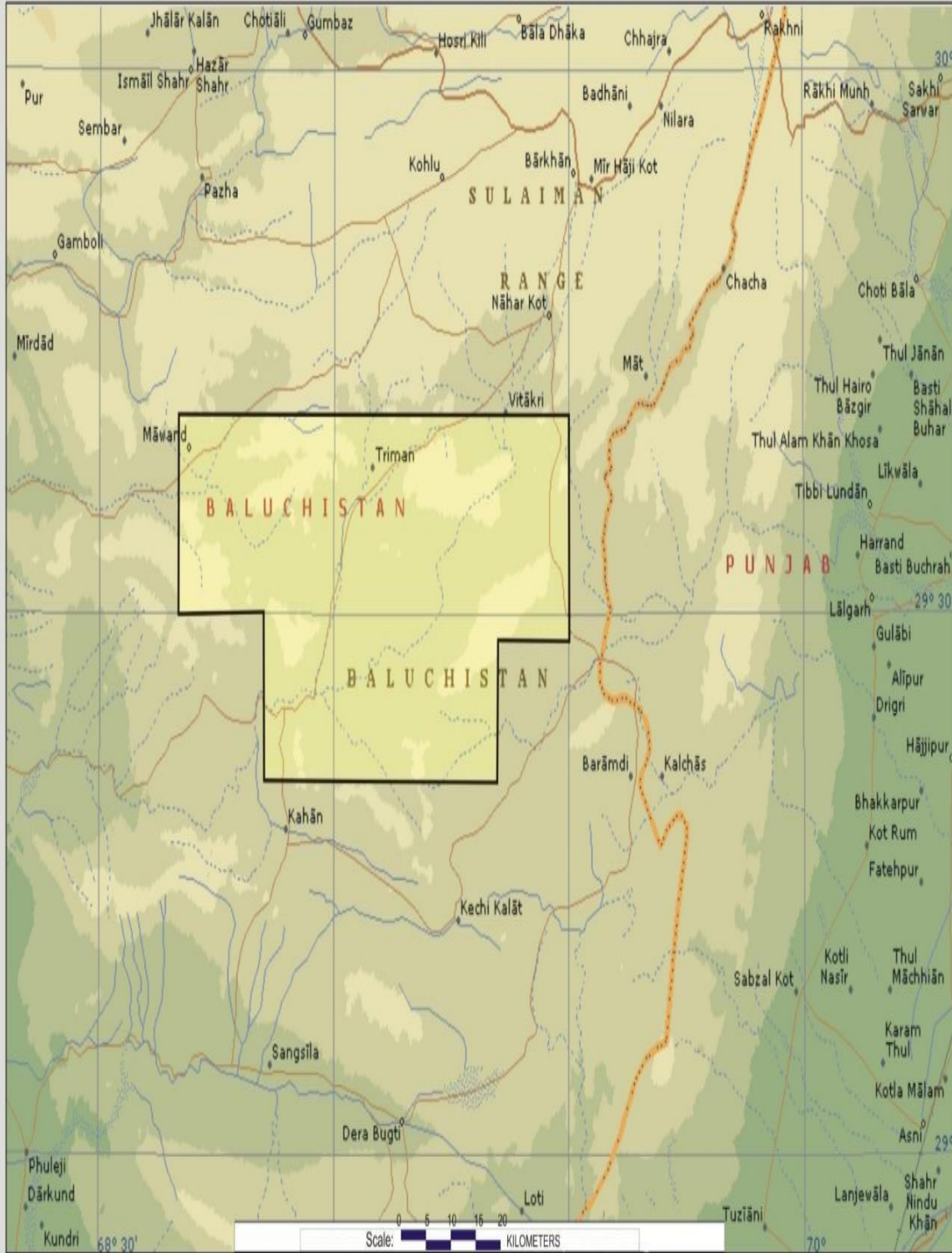
SCOPE OF WORK

Kohlu block lies in Districts Kohlu, Dera Bugti & Barkhan of Baluchistan Province. The Block covers an area of 2459.11 Sq. Kms and is located in prospective zone II. Barkhan city is situated towards north of the block and Dera Bugti lies in the south. Currently OGDCL is operator of the Block with 40% Working Interest, while MPCL has 30% Share and OPI is also of 30% shareholder as JV partners.

The area is bounded by latitudes and longitudes as shown below.



LOCATION MAP OF KOHLU E.L

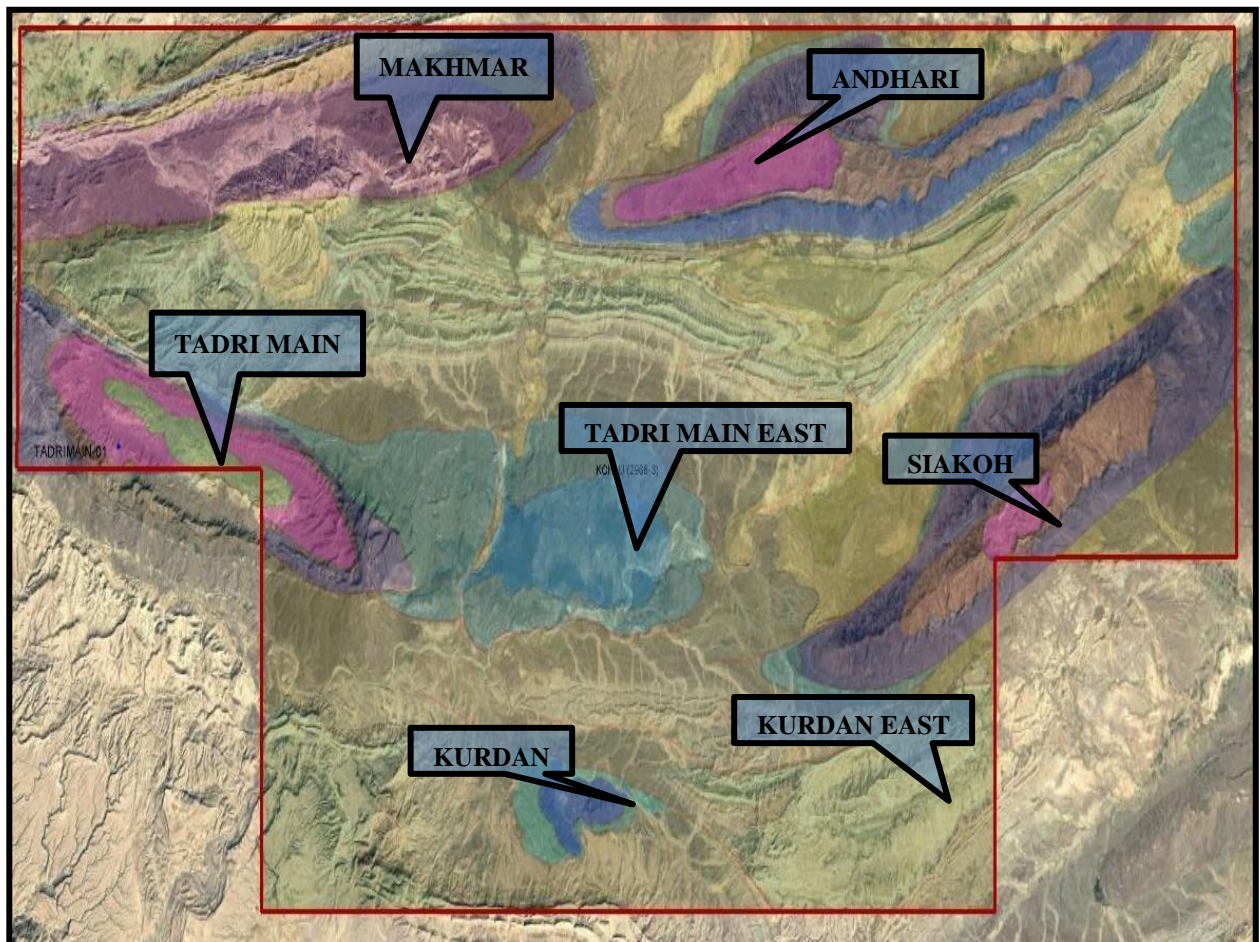


A- GEOLOGICALFRAMEWORK

The geological map of the area indicates that Cretaceous to Pliocene rocks are exposed in the block area. The oldest formation exposed in the area is Parh of Cretaceous age. The structures in the area are oriented in different directions including ENE-WSW & SE-NW. Geological map demonstrates Anticlinal structures with late Cretaceous and Early Paleocene formations (Mughal kot, Parh and Ranikot) exposed in the crustal parts.

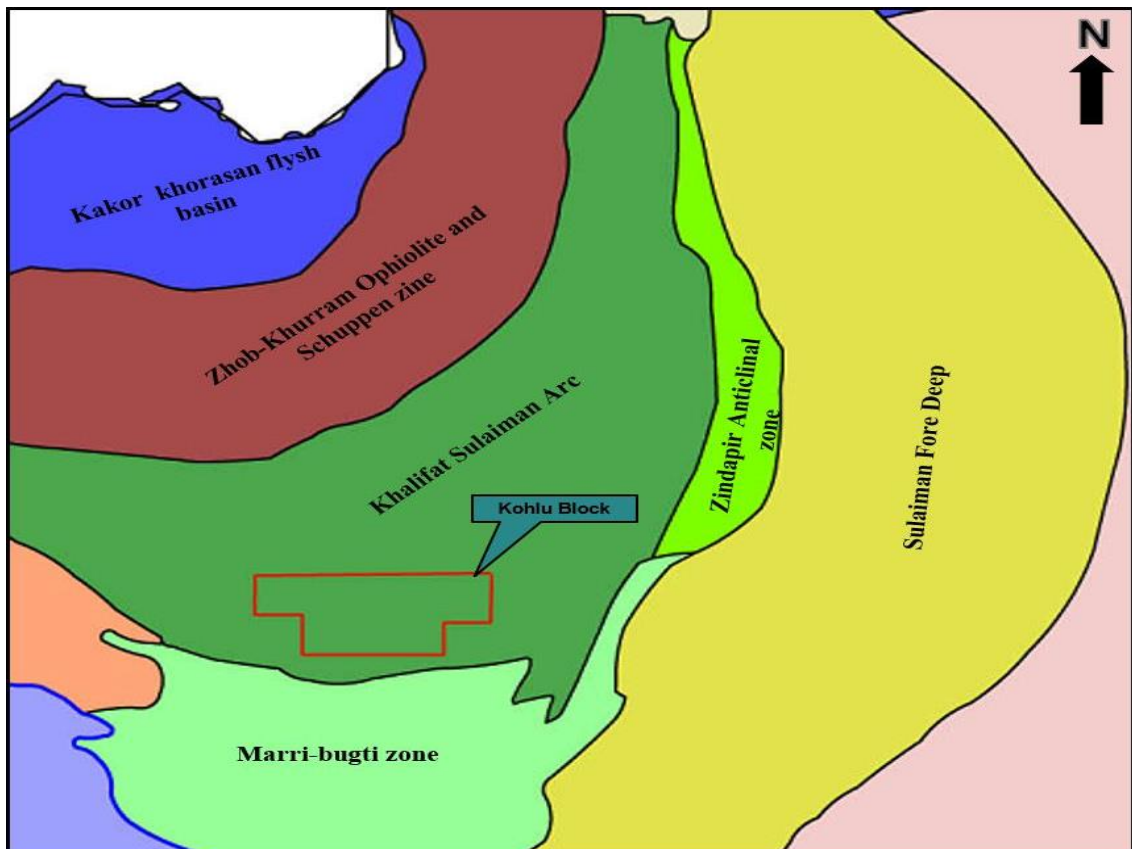
The area has remained focus of active exploration. Previously area, including Block- 28, Kohlu & Kalchas remained with foreign oil companies. Kohlu Block was first awarded to AMOCO who conducted very limited seismic and drilled Tadri main-1 well. Later it was awarded to Trinity oil of USA & then to Oxy but companies could not fulfil the commitments of seismic and drilling of wells and later surrendered the area.

However, number of exploratory wells have been drilled in close vicinity of Kohlu block out of which few discoveries have been made.



B- TECTONICS

Kohlu block is located in Khalifat Sulaiman arc of Sulaiman Fold Belt, Middle Indus Basin. Marri Bugti zone lies in the south of Sulaiman arc where the producing field like Pirkoh, Zin and Uch are located. While Zindapir Anticlinal zone mark the eastern margin of Sulaiman arc where the giant field of Dhodak, and Rodho are situated. Due to severe collisional tectonics, the area is specified by complex structural geometries.



C- STRATIGRAPHY

Stratigraphic succession Older than Jurassic to Pliocene has been deposited and preserved in the area. The rocks up to Jurassic have been drilled in the region and the rocks down to Paleozoic are expected to be present in the block area. During the Triassic to Middle Jurassic, thick massive Limestone of the Alozai, Shrinab, Loralai and Chiltan Formations were deposited with intraformational claystone/shale. Late Jurassic to Early Cretaceous is represented by shales and sandstones of Sembar, marl/shale and limestone of Goru formation while Upper Cretaceous is represented by carbonates & clastics of Parh, Mugalkot & Pab formations. Paleocene & Eocene rocks have also been deposited in the area but are eroded from the crestal part of the anticlinal structures.

GENERALIZED STRATIGRAPHIC COLUMN KOHLU EL, SOUTHERN SULAIMAN RANGE

AGE	FORMATION	LITHOLOGY	DESCRIPTION	SOURCE	RESERVOIR	SEAL
MID CENE	SIWALIKS		SANDSTONE, SILTSTONE, CLAY			
	OLIGO CENE	NARI/GAJ		SANDSTONE, SILTSTONE, SHALE		
E O C E N E		DRAZINDA		SHALE, SILTSTONE		
	PIRROH		LIMESTONE			
	DOMANDA		SHALE			
	HABIB RAHI		LIMESTONE, SHALE			
	BASKA		SHALE, GYPSUM			
	RUBBLY LIMESTONE		LIMESTONE, SHALE			
	GHAZU		SHALE, LIMESTONE			
PALEO CENE	DUNGHAN		LIMESTONE, SHALE			
	RANIKOT		SHALE, SANDSTONE			
C R E T A C E O U S	PAB		SANDSTONE, SHALE			
	FORT MUNRO/ MUGHAL KOT		LIMESTONE, SHALE			
	PARH		LIMESTONE, SHALE			
	GORU		LIMESTONE, SHALE			
	SEMBAR		SHALE, SANDSTONE, SILTSTONE			
	CHILTAN		LIMESTONE, SHALE			
J U R A S S I C	LORALAI		LIMESTONE, SHALE, MARL			
	ALOZAI		SANDSTONE, SHALE, LIMESTONE, SILTSTONE			

2-SEISMIC OBJECTIVES

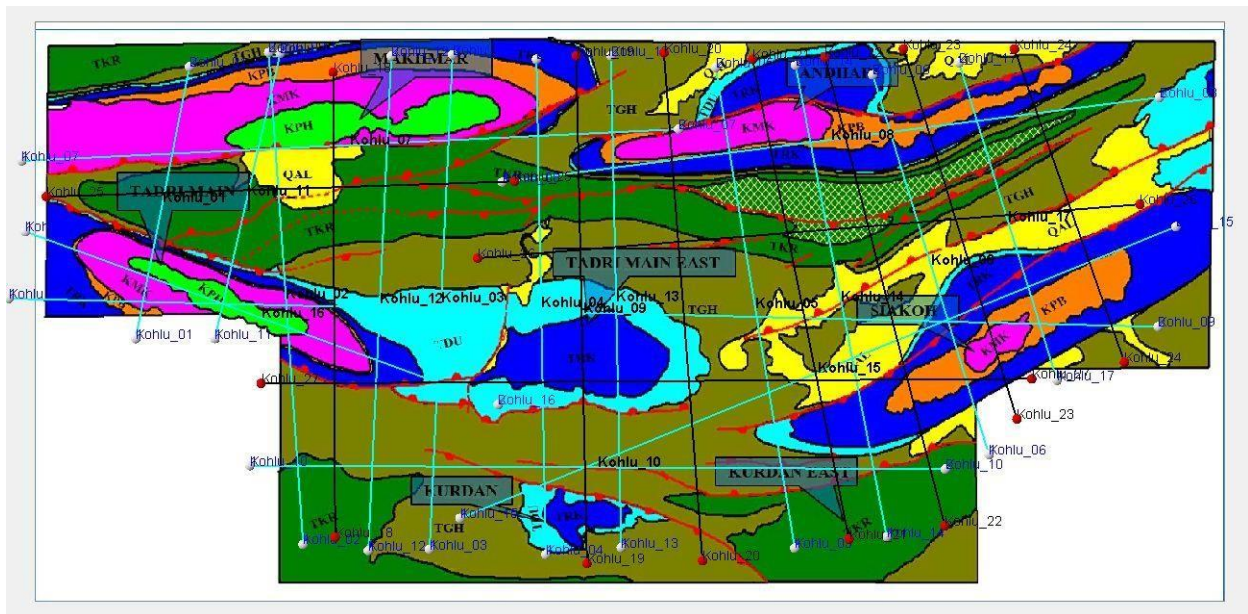
The aim of the 2D seismic program is to delineate the existing Geological based Structures after 2D seismic acquisition. This seismic reflection survey will help to further delineate the structural configurations and shall be used:

1. To acquire good quality seismic data by optimizing acquisition parameters.
2. To Improve fault definition/subsurface imaging by optimizing the line orientation.
3. Full fold tie with the old data in order to have direct correlation with the deep horizons data.
4. Reliable structural mapping at Eocene, Cretaceous and Jurassic levels.

- To enhance subsurface image at reservoir levels for delineation of better drilling locations for Exploration and further development of the field.

2- SEISMIC WORKPLAN

- The seismic work plan includes acquisition of approx. 985 L.Kms (634 Firm + 351 contingent, 27 profiles ,subject to the requirement) 2D data (about 80% dynamite &20% Vibroseis).
- Orientation of strike lines can be changed after the acquisition of dip lines subject to the requirement.
- The dip lines location can be changed subject to the requirement.
- The completion period of the project is 18 (eighteen) months after signing of the contract.



The Detailed 2D seismic work program is given below.

KOHLU 2D (UTM-42 PROJECTION)

OPI Seismic Data Acquisition work programme (Kohlu E.L.)					L.Kms	STATUS
Sr.No.	Line Name	Point	X: COORDINATES	Y: COORDINATES		
1	Kohlu_01	1	473938.9921	3261377.088	19.0	FIRM(17 NosofLines)= 634 L.Kms
	Kohlu_01	2	477673.8948	3280168.802		
2	Kohlu_02	1	485547.8861	3247140.941	34	
	Kohlu_02	2	483159.6099	3281148.028		
3	Kohlu_03	1	494304.8991	3246793.792	34	
	Kohlu_03	2	495897.0832	3281000.469		
4	Kohlu_04	1	502354.2749	3246440.234	34	
	Kohlu_04	2	501710.9326	3280692.348		
5	Kohlu_05	1	519602.9371	3246882.181	34	
	Kohlu_05	2	514118.747	3280116.576		
6	Kohlu_06	1	533053.8335	3253356.645	27	
	Kohlu_06	2	525004.1997	3279617.231		
7	Kohlu_07	1	466045.3669	3273660.849	45	
	Kohlu_07	2	511558.7690	3275857.283		
8	Kohlu_08	1	499345.8705	3272196.56	46	
	Kohlu_08	2	544859.2727	3278053.72		
9	Kohlu_09	1	465149.7542	3264142.968	80	
	Kohlu_09	2	544777.8535	3262190.582		
10	Kohlu_10	1	481840.7158	3252591.352	48	
	Kohlu_10	2	530040.9560	3252347.303		
11	Kohlu_11	1	479431.4960	3261377.088	20	
	Kohlu_11	2	483955.7016	3281088.858		
12	Kohlu_12	1	490059.0746	3246705.402	34	
	Kohlu_12	2	491651.2587	3280912.080		
13	Kohlu_13	1	507582.7798	3246926.241	34	
	Kohlu_13	2	506868.7566	3280933.328		
14	Kohlu_14	1	525975.5837	3247657.026	33	
	Kohlu_14	2	519653.2631	3280275.331		
15	Kohlu_15	1	496403.6206	3248940.884	54	
	Kohlu_15	2	545993.2000	3269107.292		
16	Kohlu_16	1	466314.5474	3268768.964	35	
	Kohlu_16	2	499043.7390	3256814.716		
17	Kohlu_17	1	537769.4827	3258492.665	23	
	Kohlu_17	2	530982.9155	3280441.273		
18	Kohlu_18		487625.0400	3279822.64	32	
	Kohlu_18		487766.8800	3247630.02		
19	Kohlu_19		504469.0700	3280953.63	35	
	Kohlu_19		505213.4900	3245827.01		
20	Kohlu_20		510544.2700	3281143.89	35	
	Kohlu_20		513221.2500	3246021.05		
21	Kohlu_21		516688.4800	3280702.89	34	
	Kohlu_21		523369.7500	3247509.53		
22	Kohlu_22		521701.4800	3280840.48	33	Contingent(10 Nosof Lines)= 351L.Kms

	Kohlu_22		530017.7400	3248435.91	
23	Kohlu_23		527150.7800	3281414.52	27
	Kohlu_23		535008.4500	3255805	
24	Kohlu_24		534837.0400	3281396.46	23
	Kohlu_24		542453.8400	3259752.67	
25	Kohlu_25		467768.1400	3271192.66	32
	Kohlu_25		500193.2800	3272253.11	
26	Kohlu_26		497638.1100	3266939.55	46
	Kohlu_26		543532.8000	3270669.74	
27	Kohlu_27		482635.5300	3258270.77	53
	Kohlu_27		536032.6400	3258599.28	
Total L.Kms					985

Note: Orientation of strike lines will be firmed after the acquisition of dip lines.

2- SCOUTING OF THE SURVEYAREA

The Company requires that the Contractor is fully aware of all local conditions in relation to seismic operations. Bidder should conduct a detailed scouting trip prior to submission of technical & financial Bid proposal of the Project area to address, amongst others, the following issues:

- Sufficient base station locations for the survey system, as required.
- Hazard Maps.
- Operational Risk Assessment
- Baseline Environmental assessment of the survey area
- Evaluate effects and disturbance of the operation on the local habitats.
- Road Maps and location of airstrips
- Location of proposed basecamp
- Local logistics and infrastructure.
- Local legal frame work, in particular for labor and safety regulations.
- Licensing permits and tax requirements,
- Explosive magazines requirements etc.

3- GENERAL TERMS ANDCONDITONS

Bidder will prepare their bid in two parts i.e. technical proposal (Part-I) and financial proposal (part-II) strictly in line with the instructions given in the TOR.

The contractor shall be required to comply with and conduct all operations in accordance with all applicable laws and Government orders, rules and regulations of Pakistan and of the Political Sub-Division in which work is to be performed including, but not limited to income tax laws and regulations, and working hours' laws, safety rules and any regulations pertaining to the conduct of seismic operations in Pakistan.

4- TECHNICAL PROPOSAL

- The Technical Proposal of bidder should include the following documents/information, as the contractor shall have to meet the minimum technical eligibility criteria as per details provided in Schedule B, C & D.
- List and detail CV of Technical personnel's, Expatriate and local proposed to be included in basic operating unit as per Schedule C.
- Technical details and list of equipment and quantities as per Schedule C.
- List of test and quality standards as detailed in Schedule D.
- Complete/comprehensive schedule of work program.
- Detailed reconnaissance report (Scouting Report of the Survey area).
- Documented Experience in similar type of survey areas.
- A copy of their current safety manual, HSE Organization and sample of accident/incident reporting forms, together with details of their safety record for the past two years.
- EHS exceptions e.g. Emergency Response Plan, Medical arrangements, camp clinics, field magazine and security etc.
- Copy of all crew operational procedures for land.
- The Checklist at Annexure-I must be provided in the Technical proposal.
- Technical Performa to be filled by the bidder in Annexure –II.

Note: -Technical Evaluation criteria are mentioned in Annexure–III.

5- FINANCIAL PROPOSAL

Bidder should quote their charges in the financial bid strictly in accordance with the Schedule E.

SCHEDULE - B

TECHNICAL SPECIFICATION AND PARAMETERS

1- INTRODUCTION

The Company requires that all seismic equipment supplied for the survey to be in new or nearly new condition in particular the spread cable and geophone strings. Geophone receiver elements should not be more than three years old.

All equipment proposed for the survey will be subject to audit for technical and safety before acceptance by the Company.

Specifications of all seismic, equipment and positioning equipment should also be provided with the Bid Proposal.

2- ACQUISITIONPARAMETERS

Following are the tentative recording parameters for 2D seismic data acquisition work to be tested.

A- Receiver Parameters

Receiver Parameters	Option-I	Option-II
No of Channels	300	480
Spread	Symmetric Split	Symmetric Split
Station Interval	40 m	25 m
Source Interval	40 m	50 m
No of geophones	24 (02 strings)	24 (02 strings)
Geophone array	linear	linear
Group Base	38.33 m	23.95 m
Geophone interval	1.66 m	1.04 m
Fold	150	120
Record Length	6 sec	6 sec
Sampling	2 m sec	2 m sec
Near Offset	+/- 60 m	+/- 37.5 m
Far offset	+/- 6020 m	+/- 6012.5 m

Final parameters will be selected after experimentation in the field.

B- Source Parameters:

Deep hole drilling	
No. of holes	01
Hole Depth	12m, 15m, 18m, 21m, 24m, 27m, 30m
Charge size	4, 6, 8,10, 12 kg
Pattern shots	
i) Shallow hole Shot:	
No. of holes	03
Hole Depth	6m, 9m
Charge size	1kg, 2kg, 3kg
ii) POP Shot:	
No of holes	8,10,12,14
Hole Depth	1.8 m
Charge / hole	0.5 kg, 01 kg
Vibroseis	
No. of vibrators	04 + 01 spare
Peak force	minimum 60,000 lbs
Sweep length	10,12,14,16 sec
Sweep frequency	8-96 Hz to be tested
No of sweeps	4, 6, 8,10,12

Final parameters will be selected after experimentation in the field.

SCHEDULE – C

PERSONNEL AND FIELD EQUIPMENT

1- PERSONNEL

Following is the list of minimum personnel to be made a part of the agreement for seismic data acquisition, between the Company and Contractor for 2D seismic reflection data acquisition in KOHLU-2D Project

1	Party Chief	01
2	Data Acquisition Engineers (05 to 15 years' experience)	05
3	QC Geophysicists (05 to 15years experience)	02
4.	On-site seismic data processor (05 to 15 years' experience)	02
5.	HSE Advisor (one for base and one for fly camp)	02
6.	Medical Doctor	02
7.	Accounts / Admin Assistants	02
7	Surveyors	07
8	Radio Operator	02
9	Recording Field Assistant	02
10	Recording men	08
11	Drilling Technicians	04
12	Shooting Supervisor	03
13	Vibrator Technicians	03
14	Vibrator Operators	06
15	Plant Attendant / Electrician	02
16	Mechanics	05
17	Drillers	08
18	Shooters and technician	05
19	Carpenter	01
20	Dozer Operators	As required
21	Any other as per requirement	

2- FIELD EQUIPMENT

Following is the basic field equipment which will be provided by the Contractor to perform the 2D seismic reflection data Project.

A.	RECORDING EQUIPMENT (Type / Make / Model) 24-bit latest telemetry system (Like 428XL, 508XT & G3i) or better with details as under.	
	1	Recording/ Instrument/ Specification/ maximum Number of active channels available/ channel capability with dynamite mode /online data quality control system.
	2	Detail of Ground Electronics/ cables with year of purchase Number of available Geophone strings / (SM-24/ SG-10 or equivalent / better), Technical Literature.
	3	12 Nos. of Geophone per string (Configuration, 06 series +06 series & both series in parallel).
	4	Detail of auxiliary / test equipment for ground electronics and geophone groups.
5	Encoder / Decoder (Shooting Equipment) Equipped with GPS.	
B.	SOURCE EQUIPMENT (Dynamite / Vibroseis), number, Type	
	1	Drilling Rigs (Capacity 30m).
	2	Portable Rigs/ Jack hammers / No. of units available.
	3	Truck Mounted Rigs /No. of units available
4	Vibrators (At least 05 Nos.), Peak force not less than 60000 lbs equipped with DGPS System.	
C.	REFRACTION / UPHOLE LOGGING UNITS	
	1	24-bit Instrument with Specification, type of geophones & numbers, Uphole drilling Rig (Capacity 100m).
	2	LVL / Refraction Survey Unit, type of geophones & numbers, Instrument Specification / Spread Length / Channels.
3	LVL processing & Statics calculation software.	
D.	ON-SITE SEISMIC DATA PROCESSING UNIT AND 2D PLANNING AND DESIGNING SOFTWARE Make / Model of Hardware / Plotter & cartridge drive Detail of 2D Processing Software	
E.	GPS AND SURVEYEQUIPMENT Make /Model of GPS equipment, Survey Computation Software	
F.	Detail of vehicles and other machinery like dozers, tractors and Generators in the crew.	
G.	Radio and Communication equipment & facilities	
I	Miscellaneous equipment etc.	

TEST AND QUALITY CONTROL STANDARDS

A. FIELD PROCESSING SYSTEM

An on-site data processing system will be required for monitoring quality control of seismic data acquisition and a complete set of a state-of-the-art 2D basic and advanced seismic data processing software package.

MAIN FUNCTIONS OF THE SYSTEM WILL BE:

- Daily quality control of the data.
- Optimization of the processing parameters.
- Data processing to the final/migrated stack level.
- Instrument test analysis.

FOLLOWING BASIC PROCESSING FLOW WILL BE FOLLOWED:

- Demultiplexing
- Building of geometry
- Editing of bad & noisy traces
- Mute application
- Processing parameters analysis & application
- Trace balancing
- Application of field static / Refraction static
- 1st Velocity analysis & application
- Preliminary stack
- Compute residual statics & application
- 2nd Velocity analysis
- Final stack
- Migration Stack/PreSTM

A report should be prepared after the completion of each line. This report should contain a summary of all kinds of checks done (geometry, coordinates, traces, records etc), results and observations during processing of final / Migrated stack.

A CD/DVD should be attached to the report with the following data.

- Updated SPS files.
- Interpreted uphole result in Pdf or excel format
- Seismic section in SEG-Y format with XY coordinates in the headers.
- Seismic velocities (NMO, migration) in any standard format compatible with Geoframe/Petrel.
- Any other data related to on-site processing.

B. TEST AND QUALITYCONTROL

1. DAILYTESTS

According to instrument specifications and tolerances given by manufacture, the following tests should be recorded daily on tapes.

- i. Noise and offset of all channel units lay to start production.
- ii. Internal pulse test.
- iii External geophone pulse test.
- iv. Short dynamite range determination.
- v. Ambient noise (line noise). The test may be repeated whenever there is increase in noise.

2. MONTHLYTESTS

- i. Noise and offset.
- ii. Internal pulse test.
- iii. Dynamic range determination.
- iv. Cross feed test.
- v. A-D Non Linear test.
- vi. Geophone tap test.

3. PARITY AND SYNCERROR

The system should be maintained in good mechanical and electromagnetic condition to ensure minimum parity and sync error within published specifications.

4. RECORDING SYSTEM POLARITY

SEG Standard, a positive signal at the amplifier input produce positive numbers recorded on magnetic tape and upward reflection of field monitor.

5. PAPERRECORD

Data traces and timing should be clearly visible with constant paper speed (within 1% error).

6. NOISESPECIFICATION

Noise specification will be based on fixed gain monitors to maintain a signal to noise ratio of 1.5:1 or improved. A fixed gain monitor of spread noise recorded will be taken on field tape and will be displayed on paper monitor daily prior to start seismic recording and any time requested by company representative.

The spread noise will be recorded with normal recording filters and recording setting. A record with all the channels will be analyzed by the seismic QC system.

7. CABLE ANDGEOPHONES

Contractor will continually check the faulty groups with proper geophone group tester.

All the significant noise, dead traces and groups with low response will be repaired or removed from the line.

If the recording spread does not fulfill the operation specification as listed in the contract, the company representative has the authority to suspend the operation at any time.

8. RECEIVERS

The contractor will ensure the vertical plantation of geophones with good ground coupling. In case of wind noise the geophones should be completely buried in the ground to reduce the effect of wind on geophones where ground condition does not permit the burying the geophones and spread noise is outside normal acceptable standards, the company representative must be informed the situation.

All the geophones will be planted at correct spacing to ensure the validity of recommended array.

To avoid effect of noise from pipelines, the change in lay out plan source and receiver may be required at places.

9. **SEISMICSOURCE**

9.1 DYNAMITE

- i- Charge in the shot holes will be loaded with poles to ensure its placing at recommended depth.
- ii- Time break confirmation and up-hole time should be systematically recorded for each shot point.
- iii- All the charges must be properly tamped with small graded crushed stone to avoid blowouts.
- iv- Any charge that is loaded at shallower depth must be reported to Company Representative who will decide to take it as production shot point or to re-drill/ re-load.
- v- Extra care must be taken while drilling source points, loading & shooting explosive close to the pipe lines& populated areas. Standard Operating Procedures will be adhered while handling explosive.

9.2 Shooting System

- i- Shooting system should be equipped with GPS system.
- ii- Timing test is performed by blasting of a detonator cap, which breaks a low voltage DC electric circuit wended around the cap. The following signals have to be recorded using the auxiliary and data traces of the equipment:
 - The voltage of the DC circuit,
 - Clock time break (TB) supplied by the encoder,
 - Confirmation TB supplied by the decoder (shooting box)
- iii- Up-hole time test
First breaks from the two single geophones planted close to each other are used for the test. The sources have to be located far enough from the geophones so that the difference in the direct arrival time to geophones is below one millisecond.
- iv- Data of one of the geophones have to be recorded on an auxiliary trace, while data from the other geophone on a data trace. Time break has to be recorded on both, an auxiliary and a data trace.
- v- Up-hole time read out from the auxiliary and the data traces have to be corresponding within one millisecond. Up-hole time read out from the auxiliary traces and the shooting box has to correspond within 2milliseconds.
- vi- Prior to the commencement of the acquisition, Contractor shall perform both, timing and up-hole tests for each shooting box at the crew.
- vii- Additional tests have to be performed if
 - Any part of the shooting system (shooting box or radio, cables) has been changed,
 - The type of detonator caps changed
 - The equipment newly joined the crew
 - When the accuracy or stability of the system becomes doubtful.

Up-hole or shallow refraction Equipment

The tests prescribed by the manufacturer have to be run first at start-up and later every time before the start of acquisition of a new up-hole or shallow refraction

point. The time break has to be recorded and must correspond to the zero time of recording.

9.3 VIBROSEIS

- Vibrators should be equipped with DGPS for GPS positioning and navigation and latest model of vibrator control electronics, real time quality control and data monitoring.
- The following signals have to be recorded on the auxiliary and data traces of the seismic recorder (All traces polarities have to meet SEG standards).
 - i) Mass accelerator ii) Baseplate accelerator iii) Ground force
 - iv) True references weep v) Pilot sweep (pilot sweep generated by sweep encoder)
 - vi) Sweep time break
- All the polarities have to meet the SEG Standards. Polarity has to be checked in pulse mode when downward moving base plate (positive number on the tape and upward signal on camera display).
- The ground force signal has to be used for phase-locking.
- The phase shift between the reference sweep and the ground force signal has to be set to 180degrees.
- The periodic tests have to be accomplished to each vibrator,

periodicity	Tests	Remarks
Start-up	Hardwire and Radio similarity GPS	To be recorded on separate magnetic tape
Daily	Daily Radio Similarity	To be Recorded on a production Tape
Weekly	Hardwire-wire similarity	To be Recorded on a production Tape

- Additional wire line and radio similarity has to be performed when
 - The vibrator newly joined the crew.
 - The vibrator has been repaired
 - The sweep has changed
- The vibrator GPS test has to be logged and the results have to be handed over to Company Representative.
- During production a continuous quality control will be performed through the real time vibrator QC system in the Recorder.
- Average and peak phase, distortion and force of each operating vibrator on every sweep will be recorded on diskette and delivered to company representative on daily basis.
- Tolerances for vibrator performance, with the exception of the tapered zones.

Parameter	Tolerance
Avg. phase error	Less than two (2) degree
Peak phase error	Less than ten (10) degree
Avg. force	Not less than 80% of nominal drive level
Avg. distortion	Less than 25%
Start time difference	Less than 0.5 m sec between two vibrators
Tolerance for GPS	
Horizontal	2meters
Vertical	2 meters

- On normal areas, the actual position of any vibrator shall not differ from its theoretical position by 3meters.
- In case of discrepancy the source point can be repeated or actual position is surveys depending on the Company representative advice.

10. RECORDINGEQUIPMENT.

- i- Recording equipment has to be tested as it is prescribed in the standard seismic equipment tests.
- ii- The recording parameters;
 - Are either set in geophysical data acquisition contract /agreement or
 - Given by company representative in writing before the start of the project.
- iii- During the recording the seismic data all events, which may be important from the point of view of any later check-up, processing or interpretation of recorded data, are recorded on automatic and/or manual log (observer log). The seismic crew is responsible for the completeness, exactness and unanimity of data logged.
- iv- The observer log (s) have to contain at least the following Information:

i) Company	ii) Contractor	iii) Block, Country
iv) Recorder type & Serial No.		v)Parameter settings
vi) 2D line name,	vii) Date	viii) recorder position
ix) Source type	x) Reel No.	xi) Record No.
xii) Source position	xiii) Up-hole time	xiv) Recording time
xv)Spread description	xvi) weather conditions	xvii) Remarks

- v- The ambient noise has to be checked permanently during recording. Every reasonable effort shall be made to minimize the ambient noise. Company representative has to be informed on the increase of noise level.
- vi- During the recording, the recording truck shall be offset from the receiver lines at least 150 meters. Any switch settings or modification in the recording electronics, blasting units or the related equipment including their driving software that can result in the change of the value or format or the control of the digital data recorded, can only be changed or done after company’s approval or instruction.
- vii- There shall be no bad traces on the spread at the beginning of the day. During the normal day of operations, a maximum of 1% of the traces may be bad (except for surface restrictions).
- viii- Playback of records shall be produces at a scale agreed by company representative. Monitor record of every 5th shot point will be provided to Company Representative. Each monitor must be annotated to show line number, shot point number etc. and signature of the observer. However, if required by the Company QC / representative monitor record of any shot point will be provided to him.
- ix- Auxiliary channels have to contain at least the following signals:
 - Clock time break
 - Dynamite Recording
 - Up-hole from encoder
- x- Dynamite shooting will be controlled by radio shooting system. The transmitted time break must be synchronized to recording within 0.250 milliseconds.
- xi- **Minimum safety distance** from any deep shot hole to the local main pipe lines (buries or surface fixed), water or oil wells, permanent buildings at normal conditions will be maintained. However, an increased safety distance has to be kept to avoid excessive damages in case of increased charge, unstable structures, gas/oil/water pipelines of

overriding importance, sensitive environments, etc.

11. MAGNETIC RECORDING TAPES:

The seismic data will be recorded on new magnetic Tapes/HD/ NAS/SAS of branded acceptable company.

Proper precautions would be observed in recording, sealing, storing and transportation of magnetic tapes.

Tapes will be labeled showing line number, file number, shot point numbers, calendar date, Prospect Area, Client's name and Contractor's name etc. Recorded tapes will be numbered in a serial order.

12. SEISMIC DATA RECORDING DELIVERABLES.

Contractor shall be responsible and bear the cost of surveying consumables for the 2D Seismic Data recording including field tapes and explosives, caps and firing line. The Contractor shall provide the field data on LTO3/LTO4 cartridge tapes in SEG-D as following three sets:

- i- Original field dataset
- ii- A second copy of field data set
- iii- A third copy of field dataset

13. MISFIRE AND SKIPPED SHOTS (Dynamite/ Vibroseis) A misfire is any seismic record not correctly recorded. The following are examples of misfire.

- Loss of magnetic recording.
- Loss of time break.
- Time break is not synchronized to the system cycle delay time.
- Explosive in shot point does not detonate.
- Explosive partially detonate resulting unacceptable data quality.
- SP is unnecessarily recorded at offset not recommended by company representative.
- Dead/ noisy channels should not be more than 1%, however in extreme field conditions i.e. terrain of the area, populated area, and the noisy/dead/skip channels may vary and company representative will decide accordingly.
- Company representative will also decide the re-shot schedule for misfire and skipped shots.

14. SURVEYING AND POSITIONING

All the survey equipment shall be calibrated and tested prior to the start of operations and later, during the operations according to the manufacturer's specification and good survey practice.

Contractor shall be responsible for the construction and installation of permanent markers.

Position, coordinates and access to the permanent markers should be logged and reported in the final operations report.

Based on the primary network points, Contractor will survey a secondary control network from which the seismic lines will be set out.

All the control points will be permanently marked and clearly described to allow recovery in the future.

Generally, Observations with less than five satellites are not allowed. Check shots will be made on 5% of the surveys stations, evenly distributed during the observation period.

All the necessary computations will be completed on site. Final coordinates and elevations will be produced in SPS format.

The final survey report will be a part of the final operation report and will include at least the following information.

- Co-ordinates and elevation of the receiver and source points of seismic lines including deviated points.
- List of key survey personnel.
- List of equipment used (types and versions)
- List and description of software used (types and versions)
- Description of processing method/Surveying parameter used (spheroid, projection, datum shift etc)
- Listing of coordinates, elevations and description of permanent markers.
- Listing of coordinates and elevations of seismic lines crossing.
- Listing of coordinates and elevations of control points.
- Kml files of recorded data.
- Field notes with line description.

NOTE: Any other data relevant to project, if required by client should be provided.

SCHEDULE -E

RATE FOR 2D SEISMIC DATA ACQUISITION

- The Bidder shall provide rates for the 2D seismic data Acquisition in KOHLU 2D Project for the performance of work according to the parameters proposed by the Company in Schedule –B of Term of Reference in the format given below.
- All the rates should be quoted on a production basis.
- Financial evaluation will be carried out on lump sum basis.
- The quoted prices will be utilized for the financial evaluation purpose only, however payments will be made through cross cheque in 100% equivalent Pak Rupee at actual against verified invoices at the official exchange rate prevalent on the date of payment.

S.N	RATE FORMAT	(US\$)
1	MOBILIZATION (Lump Sum) The Lump Sum shall include all cost related to entire project for mobilizing and transporting Contractor's Personnel, equipment, and supplies to the location where service will be performed.	
2	DEMOBILIZATION No Charges will be paid for demobilization.	Nil
3.	DAY RATES (12 hours per day)	
3.1	Field Experimentation Rate (12 hours per Day rate/hour rate) (about 4 days) Field experimentation for selection of acquisition parameters.	
3.2	Standby Rate (12 hours per Day rate/hour rate) (Maximum 5 days) Contractor shall be paid daily standby rate for each day when the Contractor's crew is ready and available to perform services, but is prevented from doing so due to.	
a.	Force Majeure. No production due to weather or safety reasons. When the contractor is unable to move between the base camp / fly camp and the work site due to law and order situation, or if the movement of the contractor's personnel and equipment is prevented in the program area but not relating to land permitting. The standby Rate shall not be applicable prior to commencement of recording on the 2D seismic program lines. The Standby Rate shall not apply during any period of time when delay is caused by something for which Contractor is responsible.	

- b. No standby will be applicable against Gazetted / Public Holidays when crew is not working.

4

TURNKEY RATES FOR SEISMIC DATA ACQUISITION

- Rates for 2D seismic data acquisition (per Line km) will be provided for 985 L.Km (dynamite & Vibroseis mode) and must be inclusive of Security cost & Land crop compensation otherwise, the bids will be declared non- responsive.

Note: Rates will be provided as per Schedule-B for dynamite & vibroseis (area about 80% dynamite & 20%vibroseis).

For financial evaluation purpose average rate of dynamite will be taken by multiplying with 788 L.kms (80% of the area)

and the average rate of vibroseis will be taken by multiplying with 197 L.kms (20% of the area)

- Rates for 2D seismic data acquisition will be provided on separate sheets for dynamite and Vibroseis mode.
- Rates will be provided for Option-I & option-II separately as per Schedule-B for dynamite & Vibroseis (area about 80% dynamite & 20% vibroseis).

A. Deep hole shot (single hole)

Depth (m)	Charge (kg/ hole)				
	4	6	8	10	12
12					
15					
18					
21					
24					
27					
30					

B. Pattern Shot

i.

No. of holes	Depth (m)	Charge (Kg/ hole)		
		1	2	3
3	6			
3	9			

	<p>ii.</p> <table border="1"> <thead> <tr> <th rowspan="2">No. of holes</th> <th rowspan="2">Depth (m)</th> <th colspan="2">Charge (Kg/ hole)</th> </tr> <tr> <th>0.5</th> <th>1</th> </tr> </thead> <tbody> <tr> <td>8</td> <td>1.8</td> <td></td> <td></td> </tr> <tr> <td>10</td> <td>1.8</td> <td></td> <td></td> </tr> <tr> <td>12</td> <td>1.8</td> <td></td> <td></td> </tr> <tr> <td>14</td> <td>1.8</td> <td></td> <td></td> </tr> </tbody> </table>	No. of holes	Depth (m)	Charge (Kg/ hole)		0.5	1	8	1.8			10	1.8			12	1.8			14	1.8															
No. of holes	Depth (m)			Charge (Kg/ hole)																																
		0.5	1																																	
8	1.8																																			
10	1.8																																			
12	1.8																																			
14	1.8																																			
	<p>C. Vibro seis Source Peak force 60,000 lbs minimum No. of Vibrators = 04 + 1 Sweep frequency will be selected after experiment.</p> <table border="1"> <thead> <tr> <th rowspan="2">No. of sweeps</th> <th colspan="4">Sweep length (sec)</th> </tr> <tr> <th>10</th> <th>12</th> <th>14</th> <th>16</th> </tr> </thead> <tbody> <tr> <td>4</td> <td></td> <td></td> <td></td> <td></td> </tr> <tr> <td>6</td> <td></td> <td></td> <td></td> <td></td> </tr> <tr> <td>8</td> <td></td> <td></td> <td></td> <td></td> </tr> <tr> <td>10</td> <td></td> <td></td> <td></td> <td></td> </tr> <tr> <td>12</td> <td></td> <td></td> <td></td> <td></td> </tr> </tbody> </table>	No. of sweeps	Sweep length (sec)				10	12	14	16	4					6					8					10					12					
No. of sweeps	Sweep length (sec)																																			
	10	12	14	16																																
4																																				
6																																				
8																																				
10																																				
12																																				
5	<p>REFRACTION (WZ) RECORDING Approximate 200 WZ points for the project.</p>																																			
6	<p>UPHOLE LOGGING UPTO 100 M DEPTH Logging of approximate 130 Upholes with detonator or hammer as a source and their data processing.</p> <p>About 4 upholes will be recorded prior to parameter testing to help in finalizing the charge depth.</p> <p>Up-hole depth will be finalized after experimentation.</p>																																			
7	<p>CABLE POINT CHARGES Approximate 1000 cable points for the project.</p>																																			

- All the shot holes will be drilled to its required depth and loaded with required charge sizes then all loaded charges in shot holes will be securely tamped with gravel so that energy from the detonation is contained at the base of shot holes.
- Vibrators sweeps must not be missed. Coupling of the base plate (100%) should be firm with the ground. Shots with weak energy due to poor coupling/ missed sweeps will be repeated.
- **No charges will be paid for misfire or skipped shots.**

- **The Contractor will be responsible** for obtaining all permits from land owners prior to start of surveying for Seismic Data Acquisition program areas and pay all cost incurred for permitting, land surface and sub-surface (shot holes) damage caused by Seismic Data Acquisition and negligent damage caused by Contractor.
- **Contractor shall be fully responsible for arrangement of security** including transportation, accommodation and food etc. for the security agencies that will provide security cover to the Contractor's Crew/ employees, company Representative, all crew's equipment and consumables.

SCHEDULE – F

COMMUNICATIONS AND REPORTS

Following reports shall be supplied by the Contractor.

- Daily Progress Report and HSE Report.
- Monthly progress reports and HSE Statistics
- Final seismic Operational report including Filed processing, Survey and HSE reports (4 Hard & 6 softcopies)

It is mentioning to Note that,

- All reports shall preferably be in Microsoft Word/Excel format.
- LVL/ Up-hole data will be submitted in Microsoft Excel format on CD/DVD.
- All survey data will be submitted in both UKOOA and Excel formats on a CD's/DVD's.
- Any other data relevant to project, if required by client should be provided.

SCHEDULE – G

HEALTH, SAFETY AND ENVIRONMENT PROTECTION

1. General HSE regulations to be observed:
 - 1.1 CONTRACTOR in the conduct of its operations should adhere to, at a minimum, the safety regulations published in the Safety Manual of the International Association of Geophysical Contractors.
 - 1.2 A safety meeting should be carried out in the Crew at least twice a month, or more often if deemed necessary, with all members of the crew in which hazards of the operation are analyzed and safety measures discussed. Special attention will be given to safe driving methods and proper handling of explosives. A copy of these meetings should be forwarded to the Company.
 - 1.3 Sufficient hygienic facilities shall be provided for all employees and shall be well maintained.
 - 1.4 CONTRACTOR shall provide adequate supply of drinking water for all employees at campsites and in the area where crews are working.
 - 1.5 One full time medical specialist and a Safety Officer with sufficient infrastructure shall be providing in the base camp and fly camps if any.
 - 1.6 All vehicles will be equipped with seat belts for all passengers and driver, and first aid kits and five extinguishers shall be provided.
 - 1.7 Any accident in the crew which may result in personnel injuries and /or work-days lost should be reported in writing to Company, explaining cause of accident and measures taken to prevent similar one in the future.
 - 1.8 CONTRACTOR shall exercise all due diligence to conduct the work in a manner that will prevent pollution and shall comply with the applicable laws, rules and regulations. No trash, waste oil, fuel bilge water or other pollutants shall be purposely discharged or otherwise allowed to escape from Contractor's equipment, cars, trucks etc. and CONTRACTOR shall promptly clean up all and any discharge of such pollutants whether discharged purposely or accidentally as required by applicable law.
 - 1.9 CONTRACTOR shall collect all non-permanent markers set at any phase of operation soon after the completion of the data acquisition on the area.

- 1.10 CONTRACTOR shall comply with, and shall cause its personnel and any other person (s) acting under the direction of Contractor, or acting for or on behalf of Contractor to so comply with all applicable laws, orders and rules & regulations pertaining to the safety, health and environment prevention standards under Pakistan law and with all standards / procedures formulated by Safety Health and Environment Division of the Operator's Company.
 - 1.11 All operations are to be conducted in accordance with the International safety and environmental protection standards. Every effort should be made to prevent environmental damage during the course of the survey and to fulfill any conditions stipulated in the final Contract Agreement.
 - 1.12 CONTRACTOR shall be liable for and shall save, defend indemnify and hold COMPANY harmless from and against any and all claims resulting from any such pollution.
2. CONTRACTOR shall comply with all the Company's HSE regulations that are available with its Environment Protection and Safety Department for reference and strict compliance on request.

Check List								
(The bidder will quote the rates item wise in their commercial offer)								
Sr. No	Item Description					Please tick item wise for the rates quoted		
1	Mobilization cost							
2	Demobilization No Charges will be paid for demobilization of crew.					Nil		
3	Experimentation Day Rates / Hourly Rates (12 hours per day/ hour rate)							
4	Standby Rate Day Rates / Hourly Rates (12 hours per day / hour rate)							
5	Turnkey Rates of 2D Seismic Data Acquisition as Dynamite & Vibroseis Mode inclusive of security charges & Land crop compensation.							
A. Deep hole shot (single hole)	Depth (m)		Charge (Kg/hole)					
			4	6	8	10		12
	12							
	15							
	18							
	21							
	24							
	27							
30								
B. Pattern shot	i)	No. of holes	Depth (m)	Charge (kg/hole)				
				1	2	3		
		3	6					
	3	9						
	ii)	No. of holes	Depth (m)	Charge (kg/hole)				
				0.5	1			
		8	1.8					
		10	1.8					
12		1.8						
14	1.8							
C: Vibroseis Source	No of sweeps	Sweep Length (sec)						
		10	12	14	16			
	4							
	6							
	8							
	10							
12								
6	LVL REFRACTION (WZ) RECORDING PER POINT							
7	UPHOLE LOGGING (UPTO 100 M DEPTH) PER METER							

8	CABLE POINT CHARGES PER POINT	
---	-------------------------------	--

Technical Performa To Be Filled By The Bidder

Category No.	Description of Technical Information
1	<p>Company History & Profile</p> <p>No. of years Since establishment. Experience in similar project areas. List / No. of 2D/3D Seismic surveys. 2D/3D seismic coverage for last 5 years. No. of Seismic Crews.</p>
2	<p>RECONNAISSANCE OF THE AREA Area information including environmental characteristics is important to understand before starting seismic acquisition work. Therefore, the bidder must conduct a detailed reconnaissance of the area physically prior to submission of the bid and submit reconnaissance report with the technical bid proposal.</p>
3	<p>Specific technical information of equipment detailed for the job.</p> <p>RECORDING EQUIPMENT (Type / Make / Model)</p> <ul style="list-style-type: none"> • 24-bit latest telemetry system (like 428XL/508XT/G3i) or better with details as under: • Maximum capability of recording system capable of dynamite/ Vibroseis operation and available ground electronics. • Type of data storage and on-site real time quality control system. <p>Type of geophones (10 Hz) Make/ type and manufacturing year.</p> <ul style="list-style-type: none"> • Total no. of geophone strings available with 12 geophones per string (SM-24/SG-10 or equivalent. (06 series+06 series both series in parallel, length 110-130m) • Detail of laboratory equipment (make/model) Type of geophone tester, Ground electronic tester and repair system etc. • Shooting equipment Total available number and detail of Encoder / Decoder / Shooting Equipment/ equipped with GPS. <p>SOURCE EQUIPMENT (make/type / model).</p> <ul style="list-style-type: none"> • Total No. of truck mounted mud pump/ duel system rigs with drilling capacity. • Total no. of air compressor rigs/ dual system rigs with drilling Capacity with make type/ model and Portable rigs (Capacity30m). • No. of jack hammer with capacity to drill up to 1.8m. • Vibrators (At least 05 Nos), Peak force not less than 60000 lbs. Equipped with DGPS.

REFRACTION / UPHOLE LOGGING UNITS (Make/ type / Model)

- 24-bit recorder with at least 24 recording channels to record a spread of 220 to 260m.
- No. of LVL geophones.
- Type of source with description to record refraction survey to determine LVL if other than dynamite.
- Details of rig to drill a hole up to 100 m depth to record up-hole logging survey.
- Up/hole / LVL processing and calculation static correction software.

	<p>QC AND ONSITE PROCESSING FACILITIES (make/ type/ model). Detail of 2D on-site seismic Processing hardware & Software.</p>
	<p>GPS/ SURVEY EQUIPMENT AND PROCESSING SOFTWARE (Make/type/ Model). <ul style="list-style-type: none"> • No of units available and detail of survey equipment with specifications equivalent or better than dual frequency GPS-1200 RTK/TrimbleR-8 • Detail of Survey Processing Software with specification equivalent or better to Leica Geo Office/TBC. </p>
	<p>MISCELLANEOUS EQUIPMENT (make/ type/ model) <u>EARTH MOVING MACHINES</u>: No. of Dozers, tractors etc. <u>RADIO EQUIPMENTS</u> Total Nos. and detail of VHF radios for field operation. Total No. and details of walki talki set for field operation. Fax and satellite facility. <u>VEHICLES</u> No. of LT vehicles No of HT vehicles/Trucks (4*2 & 4*4) Cable Buggies etc. <u>CAMP KIT</u> No. of electric generators). No. of living caravans with living capacity and accessories. Messing/dining facilities. Description of workshop, data acquisition lab, medical unit, water purification facility, security, POL and explosive storage and any detail the bidder want to give.</p>
4	<p>Human Resource deputed for the job <u>List of crew Professionals.</u> Qualification & Experience of key personnel. All professionals/ technical staff should have the experience more than five years in their relevant field. <u>Back-up & replacement options.</u> List of additional staff to meet any replacement of professionals in the crew due to leave or on recommendations of representative of client on performance basis.</p>
5	<p>Execution plan/Completion of Survey</p> <ul style="list-style-type: none"> • Availability of crew. • Schedule of work, survey, line clearance, drilling, recording etc. in the form of bar chart. • Confirmation of date to commence operation.
6	<p>HSE POLICY Detail of HSE policy. Procedures to implement HSE Policy. Crew HSE plan and Operational procedures Detail of Accidents if any Detail of emergency response plan, Medivac arrangements, camp clinics etc. Provision of a field magazine and security etc.</p>
7	<p>Check List Check list to be filled by the bidder</p>

ANNEXURE -III

Technical Evaluation Criteria (Qualifying Marks 80%)

- Technical proposal of the bid shall be reviewed first to determine/check its responsiveness and conformity with the requirement of bid.
- The technical evaluation will be carried out on the basis of information supplied by the bidders in their technical proposals and the criteria spelled out at Annexure-A/ITB provided with this document.
- The bidders securing 80 % or more marks will qualify.

The detail breakup of the relevant information to be provided by the bidder and the comprehensive marking criteria are tabulated below.

- There are six (6) categories and various sub categories. Zero marks in any category will lead to disqualification.
- Technically responsive and financially lowest bidder will be considered for award of job.
- Further, any information related to seismic operation will be provided by bidder if required.

Cat. No.	Description of Technical Information	Qualifying Criteria	Max. Marks
1	COMPANY HISTORY & PROFILE		18
	No. of years since establishment	Less than 5 years: 0 marks 5-7 Years: 2 marks More than 7 years: 4 marks	4
	No. of 2D/3D Seismic land surveys completed in last 5 years.	Less than 3 surveys: 0 marks 3 to 6 surveys: 2 marks 7 to 10 surveys: 4 marks More than 10 surveys : 6 marks	6
	2D/3D land seismic surveys coverage completed in last 5 years.	Less than 1000 kms: 0 marks 1001 to 3000 kms: 2 marks 3001 to 5000 kms: 4 marks More than 5000 kms: 6 marks	6
	No. of Crews	One seismic crew: 1 mark Two or more seismic crew: 2 marks	2
2	RECONNAISSANCE OF THE AREA (Mandatory) (Physically conducted Reconnaissance)	Report submitted: 5 marks	5
3	SPECIFIC TECHNICAL INFORMATION OF EQUIPMENT DETAILED FOR THE JOB.		48
	RECORDING EQUIPMENT (make / type/ model) <ul style="list-style-type: none"> • 24-bit latest telemetry system (like 428XL /508XT/ G3i or better). Maximum number of active channels available. <u>Available Ground Electronics:</u> <ul style="list-style-type: none"> • Cables, Geophone strings (12 No. of geophones per string SM-24/ SG-10 equivalent or better). Ground electronics for water bodies if required. • Detail of auxiliary/ test equipment, Encoder / Decoder etc. • Type of data storage and onsite real time QC system. 		16

	<p>SOURCE EQUIPMENT (make / type/ model) Dynamite Rigs with Drilling Capacity & Number of units available (Minimum 30 Rigs)</p> <ul style="list-style-type: none"> • Portable Rigs/ Jack hammers etc. • Air compressor rigs/Truck Mounted Mud Rigs/ duel system Rigs. 	16
	<p>REFRACTION / UPHOLE LOGGING UNITS (make / type/ model)</p> <ul style="list-style-type: none"> • 24 Bit Up-hole Logging Unit Instrument with Specification, type of geophones & numbers, Rig with Capacity LVL / Refraction Survey Unit, type of geophones & numbers, Instrument Specification / Spread Length / Channels, • Source type if other than dynamite. • LVL processing & Statics calculation software. 	4
	<p>QC & ONSITE PROCESSING (make / type/ model) Detail of hardware for on-site seismic data processing Make / type and model Detail of 2D Processing Software</p>	4
	<p>GPS/SURVEY EQUIPMENT AND PROCESSING SOFTWARE (make / type/ model) Detail of survey equipment, Detail of GPS/ survey processing software.</p>	5
	<p>MISCELLANEOUS EQUIPMENT Earth moving machinery: Bulldozers and supporting vehicles etc. Radio/ communication equipment: VHF Radio Equipment, Walki Talki, Internet, Fax, Satellite phone facility. Camp kit: Detail of all facilities and vehicles.</p>	3
4	HUMAN RESOURCE DEPUTED FOR THE JOB	12
	Total no. of Professionals, Give detailed list	4
	Qualification & Experience of Key professionals (minimum 5 year experience)	4
	Back-up & replacement options	4
5	EXECUTION OF SEISMIC SURVEY	12
	Availability of crew in Pakistan	3
	Schedule of work, Confirmation of date to commence survey.	9
6	HEALTH SAFTY ENVIRONMENT (Mandatory)	5
	Compliance to HSE policy	5
TOTAL MARKS (Qualifying Marks 80 %)		100