



OIL & GAS DEVELOPMENT COMPANY LIMITED

Request for Quotation (Imports)

OGDCL House, Jinnah Avenue, Islamabad, Pakistan

ANNEXURE 'A':

Description: X-MASS TREE, 3-1/8", 5000 PSI WITH ACCESSORIES AND SERVICES

Tender Enquiry No: OGDCL-SCM-FB-CB-PROD-6200000030-2022

Delivery Period: 06 MONTHS CFR BY SEA BASIS

Mode of Shipment: CFR BY SEA

Mode of Procurement: COMPETITIVE BIDDING (PRESS TENDER)

Evaluation Criteria: FULL CONSIGNMENT WISE

Bid Bond Value: USD 24,000/- OR EQUIVALENT PKR

Bid Validity: 180 DAYS FROM TENDER OPENING DATE

Bidding Procedure: SINGLE STAGE TWO ENVELOPE, TENDER DOCUMENTS AVAILABLE ON OGDCL'S WEBSITE UNDER TAB "MASTER SET OF FOREIGN TENDER DOCUMENT (PRESS-SINGLE STAGE TWO ENVELOP) 21-06-2022"

Purchase Req: 20000152

Attachments: COMPLETE DESCRIPTION / DETAIL TORs ARE ATTACHED

Other Terms & Conditions:

SR NO	Material No	Material Description	Unit	Quantity	Unit Price (FOB)	Total Price (FOB)	Unit Price (CFR)	Total Price (CFR)	Deviation From Tender Spec. If Any
1.	20-00428	Christmas Tree/Gate Valve Assembly 3-1/8" 5,000 psi. Each assembly should supplied in assembled form. Temperature Class 'U' Material Class EE-1.5, PSL-3, PR-2. Figure attached. For Details see attached sheets	SET	20					
2.	20-02086	1/2" NPT, 5,000 psi WP Needle valves (Male x Female), Super Trim, 316 ST/STL.	NO	25					
3.	20-02088	Thermo well Compatible with 3-1/8", 5,000 psi, Double Studed Instrument Flange 316 ST/STL.	NO	20					
4.	20-00433	Temperature Gauge, 4" Dial, Range 0° F to 250° F, Compatible with thermo well 316 ST/STL.	NO	20					
5.	20-00370	Pressure Gauges 0- 5,000 Psi DIAL SIZE 4" with 1/2" NPT Threads	NO	25					

Tender Enquiry No: OGDCL-SCM-FB-CB-PROD-620000030-2022

SR NO	Material No	Material Description	Unit	Quantity	Unit Price (FOB)	Total Price (FOB)	Unit Price (CFR)	Total Price (CFR)	Deviation From Tender Spec. If Any
6.	20-00458	Set of Beans for Positive Choke 3-1/8" 5,000 psi with Hex HD and Tung Carbide Insert 16/64", 20/64", 24/64", 28/64", 32/64", 36/64", 40/64", 44/64", 48/64", 52/64", 56/64", 60/64", 64/64" Orifice.	SET	20					
7.	20-00459	Set of Beans for Positive Choke 3-1/8" 5,000 psi with Hex HD and Tung Carbide Insert 96/64", 128/64" Orifice.	SET	7					
8.	20-01372	Bean Wrench for 3-1/8" 5,000 psi Positive choke beans	NO	20					
9.	20-02092	Valve, Back Pressure, 3" Nom. Type 'H' , 3-1/32" OD, 4 T.P.I. L.H. Thread 3.1/2" OD Tubing, (For Tubing Hanger).	NO	20					
10.	20-00372	3" Two Way Check valve for Tubing Hanger	NO	5					
11.	20-00615	Insertion Tool for BPV/Check Valve	NO	20					
12.	20-00616	Removal Tool for BPV/Check Valve	NO	20					
13.	20-00439	Hydraulic Pump Hand Operated for testing the tree with connecting pressure manifold, API 10,000 PSI W.P.	NO	20					
14.	20-02008	Flange, 2-1/16" 5,000 psi WP w/ 2" Fig 1502 Connection Hammer Union	NO	20					
15.	20-02009	Flange, 3-1/8" 5,000 psi WP w/ 2" Fig 1502 Connection Hammer Union	NO	20					
16.	20-00306	Tubing Head Spool Assembly Each assembly should supplied in assembled. Figure Attached. For details see attached sheets	SET	22					
17.	34-00099	Sets of studs and nuts each set comprises of 12 Nos studs (each with 02 Nos Nuts), size 1-7/8" Dia x 14-1/4" length, Zn/Cad/PTFE coated, Material A193 GR B7	NO	25					
18.	20-00417	Gasket, Self-Sealing Ring ST/STL R/RX-54	NO	25					
19.	20-02059	11" Nom. Bore Wear Bushing, for Tubing Head Spool Material : Standard	NO	20					

Tender Enquiry No: OGDCL-SCM-FB-CB-PROD-620000030-2022

SR NO	Material No	Material Description	Unit	Quantity	Unit Price (FOB)	Total Price (FOB)	Unit Price (CFR)	Total Price (CFR)	Deviation From Tender Spec. If Any
20.	20-02060	Combination Tool for Installation and Removal of Wear Bushing with 3-1/2" IF Box (Bottom and Top). The Tool may also be used for testing the BOP including the provision to test the Blind rams also. Material : Standard	NO	20					
21.	20-00420	Tubing Hanger 11", 5000 psi W.P. with an extended seal neck having two 1/4" continuous Control Lines Prep. with all necessary fittings for control line installation (Box) (Top and Bottom). Figure attached. See attached sheets	NO	23					
22.	30-00442	Substitute/Xover Pin X Pin 3-1/2" 10.3 lbs/ft Hydril CS threads or 100% equivalent premium threads e.g. Grant Prideco RTS-8, TPS Technitube "TS-8", Hunting TS-HP, Benoit "BTS-8" etc. L-80 (type 1) Min length : 2 feet	NO	25					
23.	20-00440	Lubricator Assembly (forged material) with 16 feet Polished Rod along with C and Friction Wrenches with each lubricator. Lubricator bottom should have a OTIS type code 'G' quick union (5-3/4" - 4 ACME, 4" seal diameter, 3" nominal ID, 10,000 psi W.P	NO	8					
24.	20-01997	Reducer bushing assembly, 9-5/8" x 7" casing with two (2) nos FS seals, in case the tubing head spool is to be used on 7" casing as per attached figure. Reducer bushing must be self-energized	NO	10					
25.	20-02131	Adjustable choke assembly (forged material) angle type 3-1/8" 5,000 PSI WP, (R-35) Inlet and Outlet Flanged connections, 2" maximum orifice with Choke size mentioned in /128" units Hand wheel operated. See attached sheets	NO	5					
26.	20-02132	Positive choke assembly (forged material), angle type 3" NOM with 3-1/8" 5,000 PSI WP (R-35) Inlet and Outlet Flanged connections suitable for 2" maximum orifice bean. See attached sheets	NO	5					

Tender Enquiry No: OGDCL-SCM-FB-CB-PROD-620000030-2022

27.	20-00458	Set of Beans for Positive Choke 3-1/8" 5,000 psi with Hex HD and Tung Carbide Insert 16/64", 20/64", 24/64", 28/64", 32/64", 36/64", 40/64", 44/64", 48/64", 52/64", 56/64", 60/64", 64/64" Orifice.	SET	3				
28.	20-00441	3-1/8" 5,000 psi WP Double Flanged gate valves forged material) including Hand wheels. Each gate valve will be provided with i. 02 Nos R-35 Ring Gaskets ii. 08 Nos studs (each with 02 Nos Nuts), size 1-1/8" Dia x 7-3/4" length, Zn/Cad/PTFE coated	NO	10				
29.	20-00060	One (1) 11" API 5,000 psi WP (Bottom) x 3-1/8" API 5,000 psi WP (Top) Double studded adaptor flange (forged material), with two 1/4" control lines preparation, pack-off flange must have two exit blocks for the 1/4" control line. See attached sheets	NO	2				
30.	34-00075	Sets of studs and nuts each set comprises of 8 Nos studs (each with 02 Nos Nuts), size 1-1/8" x 7-3/4" length, Zn/Cad/PTFE coated, Material A193 GR B7	NO	5				
31.	34-00671	Gasket, Self-Sealing Ring ST/STL R-35	NO	20				
32.	20-00191	Double Studded Adaptor flange (forged material) 11" 5,000 psi X 7-1/16" 5,000 psi WP complete with studs/nuts and ring gaskets. Maximum thickness not more than 7".	NO	5				
33.	20-00187	Double Studded Adaptor flange (forged material) 11" 5,000 psi X 11" 10,000 psi WP complete with studs/nuts and ring gaskets. Maximum thickness not more than 7".	SET	3				
34.	20-00181	Double Studded Adaptor flange (forged material) 11" 5,000 psi X 13-5/8" 5,000 psi WP complete with studs/nuts and ring gaskets. Maximum thickness not more than 7".	NO	2				
35.	20-00357	Repair kits for Tubing head spool. Each kit consisting of two (2) nos 9-5/8" casing FS seals, Retainer wires and any other part essentially required to service the spool	SET	5				

Tender Enquiry No: OGDCL-SCM-FB-CB-PROD-620000030-2022

SR NO	Material No	Material Description	Unit	Quantity	Unit Price (FOB)	Total Price (FOB)	Unit Price (CFR)	Total Price (CFR)	Deviation From Tender Spec. If Any
36.	20-00373	Repair kits for 2-1/16" 5,000 psi Gate valves e.g. Pins, Bearings, Bonnet Seal, Seat Seal, Stem Packing, O-rings, etc. and any other part essentially required to service the valve. However kit may not include major items e.g. gate	SET	5					
37.	20-00374	Repair kits for 3-1/8" 5,000 psi Gate valves e.g. Pins, Bearings, Bonnet Seals, Seat Seals, Stem Packing, O-rings, etc and any other part essentially required to service the valve. However kit may not include major items e.g. gate	SET	5					
38.	20-02049	Repair Kit for 3-1/8" 5,000 psi Hydraulic actuator e.g. High Pressure Packing, Seals, Bearings, Disks, retainer rings, etc and any other part essentially required to service the hydraulic actuator	SET	3					
39.	20-00362	Repair kits for Double studded adaptor flange e.g. O-rings, seal rings etc. Bidder is required to quote if the repair kits are required with their quoted design of adaptor flange	SET	3					
40.	20-00363	Repair kits for BPV e.g. O-Rings, OD Seals etc. and any other part essentially required to service the BPV	SET	10					
41.	20-00364	Repair kits for X-Mass tree cap e.g. O-rings, etc. and any other part essentially required to service the Tree Cap	SET	10					
42.	20-00365	Repair kits for Tubing hanger at e.g. Metallic and soft seals for hanger body and neck, O-rings, ferrule Joint, Locking nuts, Dead Plugs etc. and any other part essentially required to service the tubing hanger	SET	15					

Tender Enquiry No: OGDCL-SCM-FB-CB-PROD-620000030-2022

SR NO	Material No	Material Description	Unit	Quantity	Unit Price (FOB)	Total Price (FOB)	Unit Price (CFR)	Total Price (CFR)	Deviation From Tender Spec. If Any
43.	20-00367	Repair kits for 3-1/8" 5,000 psi Adjustable choke e.g. 01 Stem, 01 Seat, Locking pins, union nuts, retainer ring, Back up ring, Bonnet seal, Seat seal, 01 Stem packing, O-rings, etc. and any other part essentially required to service the Choke	SET	5					
44.	20-00368	Repair kits for Lubricator Assembly e.g. Gland Packing, O-Rings, seals, etc. and any other part essentially required to service the Lubricator Assembly	SET	5					
45.	20-00369	Repair kits for BOP Test Plug/ Running and retrieving tool for Wear bushing e.g. seals, O-rings (01 set consisting of 02 Nos of Seals/O-Rings, etc.)	SET	30					
46.	20-00358	Repair Kits for Reducer bushing assembly. Each kit consisting of two (2) nos 7" casing FS seals and any other part essentially required to service the bushing	SET	5					
47.	20-00366	Repair kits for 3-1/8" 5,000 psi Positive choke e.g. Seals/O-Rings, etc. and any other part essentially required to service the positive choke.	SET	10					
48.	20-00199	Double Studded Adaptor flange (forged material) 11" 10,000 psi X 11" 15,000 psi WP complete with studs/nuts and ring gaskets.	NO	2					
49.		X-MASS TREE SERVICES (SEE ATTACHMENT)							
49.1		SERVICE ENGINEER OPERATING PER DAY RATE	PDY	125					
49.2		SERVICE ENGINEER STAND BY PER DAY RATE	PDY	75					
49.3		LUMP SUM MOB/DE MOB CHARGES OF SERVICE ENGINEER	LSM	25					

X-Mass Trees 3-1/8 inch 5,000 psi along with necessary accessories, spares and Services. All Material to be forged, and must be as per API 6A Latest Edition, PSL-3, PR-2, Temperature Class 'U' Material Class EE-1.5 unless specified otherwise.


Sr #	DESCRIPTION	UOM	Qty	Unit CFR	Total CFR
1	Christmas Tree/Gate Valve Assembly 3-1/8" 5,000 psi (Figure attached). Each assembly should supplied in assembled form having following components.(Sr. No. 1.1 to 1.10) Temperature Class 'U' Material Class EE-1.5	Nos.	20	Lump sum 01 set cost of X-Mass Tree assembly including items 1.1 to 1.10	
1.1	One (1) 11" API 5,000 psi WP (Bottom) x 3-1/8" API 5,000 psi WP (Top) Double studed adaptor flange (forged material), with two 1/4" control lines preparation, pack-off flange must have two exit blocks for the 1/4" control line. Exit block must have 1/2" NPT connection for control panel, along with all necessary instrument fittings for continuous control line installation and connection to control panel (the pack-off flange must be compatible with tubing head spool (item # 16) and the tubing hanger (item # 21)				
1.2	Six (6) 3-1/8" 5,000 psi WP Double Flanged gate valves (forged material), including Hand wheels. One each as LMV & swab valve and two on each wing,(06 No. /X-Mass Tree Assy).				
1.3	One (1) 3-1/8" 5,000 PSI W.P. hydraulically actuated gate valve (forged material) as UMV. Each with manual override (hand wheel to be provided) and fusible hold open device,(01 No. /X-Mass Tree Assy). No wire cutting				
1.4	One (1) 3-1/8" x 3-1/8" x 3-1/8" x 3-1/8" 5,000 PSI WP studed cross (forged material), (01 No / X-Mass Tree Assy).				
1.5	One (1) X-Mass Tree Top Cap Bottom flange 3-1/8" 5,000 psi and Top OTIS type code 'G' quick union (5-3/4" - 4 ACME, 4" seal diameter, 3" nominal ID, 10,000 psi W.P. STD/H2S service) with a 1/2" NPT tap on the top for pressure gauge installation (plugged). Inside of top flange should have 3-1/2" 10.3 lb/ft Hydril CS or equivalent female pickup/lifting Threads (01 No. /X-Mass Tree Assy). The ID should allow running of the 3-1/32" type 'H' BPV.				
1.6	Two (2) 3-1/8" 5,000 PSI W.P. Double Studed Instrument flanges (forged material), with two 1/2" NPT taps (plugged), on each instrument flange,(02 No. /X-Mass Tree Assy).				
1.7	Two (2) 3-1/8" 5,000 PSI WP companion flanges (forged material) with 3" Sch 120 Weld Necks,(02 Nos/X-Mass Tree Assy).				


	<u>Choke Valves fitted with X-Mass Trees Gate Valve Assemblies. Material Class 'FF-1.5' in Compliance with NACE MR-0175/ISO 15156</u>				
1.8	One (1) Adjustable choke assembly (forged material) angle type 3-1/8" 5,000 PSI WP, (R-35) Inlet and Outlet Flanged connections, 2" maximum orifice with Choke size mentioned in /128" units Material class 'FF-1.5' in Compliance with NACE MR-0175/ISO 15156 Hand wheel operated and complete with Choke Spanner, (01 No Spanner/choke assy), (01 No/X-Mass Tree Assy).				
1.9	One (1) positive choke assembly (forged material), angle type 3" NOM with 3-1/8" 5,000 PSI WP (R-35) Inlet and Outlet Flanged connections suitable for 2" maximum orifice bean. (01 No/X-Mass Tree Assy). Material class 'FF-1.5' in Compliance with NACE MR-0175/ISO 15156				
1.10	One (1) complete set of studs, nuts and ring gaskets required to assemble the above components,(01 Set/X-Mass Tree Assy).				
	Accessories for the Christmas Trees assemblies (Sr.No.2 to 16) to be supplied loose				
2	1/2" NPT, 5,000 psi WP Needle valves (Male x Female), Super Trim, 316 ST/STL.	Nos.	25		
3	Thermo well (Compatible with 3-1/8", 5,000 psi, Double Studded Instrument Flange at serial no 1.6), 316 ST/STL.	Nos.	20		
4	Temperature Gauge, 4" Dial , Range 0° F to 250° F, (Compatible with thermo well at Sr # 3), 316 ST/STL.	Nos.	20		
5	Pressure Gauges 0- 5,000 Psi DIAL SIZE 4" with 1/2" NPT Threads	Nos.	25		
6	Set of Beans for Positive Choke 3-1/8" 5,000 psi at serial no 1.9 with Hex HD and Tung Carbide Insert 16/64", 20/64", 24/64", 28/64", 32/64", 36/64", 40/64", 44/64", 48/64", 52/64", 56/64", 60/64", 64/64" Orifice.	Sets	20		
7	Set of Beans for Positive Choke 3-1/8" 5,000 psi at serial no 1.9 with Hex HD and Tung Carbide Insert 96/64", 128/64" Orifice.	Sets	7		
8	Bean Wrench for 3-1/8" 5,000 psi Positive choke beans at serial # 6 and 7	Nos.	20		
9	Valve, Back Pressure, 3" Nom. Type 'H' , 3-1/32" OD, 4 T.P.I. L.H. Thread 3.1/2" OD Tubing, (For Tubing Hanger at serial no 21).	Nos.	20		
10	3" Two Way Check valve for Tubing Hanger at serial no 21	Nos.	5		
11	Insertion Tool for BPV/Check Valve at serial no 9 & 10	Nos.	20		
12	Removal Tool for BPV/Check Valve at serial no 9 & 10	Nos.	20		
13	Hydraulic Pump Hand Operated for testing the tree with connecting pressure manifold, API 10,000 PSI W.P.	Nos.	20		

14	Flange, 2-1/16" 5,000 psi WP w/ 2" Fig 1502 Connection Hammer Union	Nos.	20		
15	Flange, 3-1/8" 5,000 psi WP w/ 2" Fig 1502 Connection Hammer Union	Nos.	20		
Tubing Head Spools Size 11" 5,000 x 11" 5,000 psi W.P. All Material as per API-6A Latest Edition, PSL-3, PR-2, Temperature Class 'U' , Material Class 'EE-1.5'					
16	Tubing Head Spool Assembly (Figure Attached). Each assembly should supplied in assembled form having following components at serial no 16.1 to16.5	Nos.	22	Lump sum 01 set cost of Tubing Head Spool including items 16.1 to 16.5	
16.1	One (1) Tubing Head spool (forged material) Bottom flange size 11" 5,000 PSI WP and Top flange size 11" 5,000 PSI WP. The top of the spool to have tie down screws and bottom having double FS seals for 9-5/8" Casing must be self energized having test ports and two 2-1/16" API 5,000 PSI WP Studded Outlets having 1-1/2" VR Thread. All required accessories e.g. Allen Wrench, Spanners etc. should be supplied with each tubing spool and placed in the box containing that spool with the following fitted items at serial no 16.2 to 16.5 Bidders are required to mention the minimum bore ID of quoted tubing head spool in the technical bid				
16.2	Two (2) 2-1/16" 5,000 psi WP Double Flanged gate valves (forged material), Including Hand wheels (02 Nos/THS Assy).				
16.3	Two (2) 2-1/16" 5,000 PSI W.P. Double Studded Instrument flanges (forged material) with two 1/2" NPT ,taps (plugged) on each instrument flange. (02 Nos/THS assembly)				
16.4	Two (2) 2-1/16" 5,000 psi WP' Blind flanges (forged material) with one 1/2" Tap (plugged) on each blind flange,(02 Nos/THS assembly).				
16.5	One (1) complete set of studs, nuts and ring gaskets required to assemble the above components,(01 Set / THS Assy).				
Accessories for the THS assemblies to be supplied loose					
17	Sets of studs and nuts each set comprises of 12 Nos studs (each with 02 Nos Nuts), size 1-7/8" Dia x 14-1/4" length, Zn/Cad/PTFE coated, Material A193 GR B7 (01 set/THS assembly)	Sets	25		
18	Gasket, Self Sealing Ring ST/STL R/RX-54	Nos.	25		
19	11" Nom. Bore Wear Bushing, for Tubing Head Spool at Serial No 16.1 Material : Standard	Nos	20		
20	Combination Tool for Installation & Removal of Wear Bushing at serial no. 19 with 3-1/2" IF Box (Bottom & Top). The Tool may also be used for testing the BOP including the provision to test the Blind rams also. Material : Standard	Nos	20		

21	<p>Tubing Hanger 11", 5000 psi W.P. with an extended seal neck having two 1/4" continuous Control Lines Prep. with all necessary fittings for control line installation (Box) (Top & Bottom) with 3-1/2" 10.3 lbs/ft Hydril CS or equivalent premium threads. 3-1/32" Cameron type 'H' BPV Compatible to quoted tubing Hanger. Hanger must be compatible with the quoted THS and Setting must not require any alignment.</p> <p>Note: Each tubing hanger must be equipped with dead plugs on both ports</p>	Nos	23		
22	<p>Substitute/Xover Pin X Pin 3-1/2" 10.3 lbs/ft Hydril CS threads or 100% equivalent premium threads e.g. Grant Prideco RTS-8, TPS Technitube "TS-8", Hunting TS-HP, Benoit "BTS-8" etc. L-80 (type 1) Min length : 2 feet</p>	Nos	25		
Accessories to be supplied loose Separately					
23	<p>Lubricator Assembly (forged material) with 16 feet Polished Rod along with C & Friction Wrenches with each lubricator. Lubricator bottom should have a OTIS type code 'G' quick union (5-3/4" - 4 ACME, 4" seal diameter, 3" nominal ID, 10,000 psi W.P.STD/H2S service) compatible with the tree top flange.</p>	No	8		
24	<p>Reducer bushing assembly, 9-5/8" x 7" casing with two (2) nos FS seals, in case the tubing head spool at serial no 16 is to be used on 7" casing as per attached figure. Reducer bushing must be self energized</p>	Nos	10		
25	<p>Adjustable choke assembly (forged material) angle type 3-1/8" 5,000 PSI WP, (R-35) Inlet and Outlet Flanged connections, 2" maximum orifice with Choke size mentioned in /128" units Hand wheel operated. Each choke valve will be provided with choke spanner</p> <p>i. 02 Nos R-35 Ring Gaskets ii. 08 Nos studs (each with 02 Nos Nuts), size 1-1/8" x 7-3/4" length, Zn/Cad/PTFE coated, Material A193 GR B7 Temperature Class 'U' Material Class FF-1.5 in Compliance with NACE MR-0175/ISO 15156. (Additional requirement in addition to the above mentioned 20 sets, To be shipped/Supplied Loose)</p>	Sets	5	Lump sum 01 no Choke valve cost including Ring Gaskets and Studs Nuts	
26	<p>Positive choke assembly (forged material), angle type 3" NOM with 3-1/8" 5,000 PSI WP (R-35) Inlet and Outlet Flanged connections suitable for 2" maximum orifice bean. Each choke valve will be provided with</p> <p>i. 02 Nos R-35 Ring Gaskets ii. 08 Nos studs (each with 02 Nos Nuts), size 1-1/8" Dia x 7-3/4" length, Zn/Cad/PTFE coated, Material A193 GR B7 Temperature Class 'U' Material Class FF-1.5 in Compliance with NACE MR-0175/ISO 15156 (Additional Requirement in addition to the above mentioned 20 sets, To be shipped/Supplied Loose)</p>	Sets	5	Lump sum 01 no Choke valve cost including Ring Gaskets and Studs Nuts	
27	<p>Set of Beans for Positive Choke 3-1/8" 5,000 psi with Hex HD and Tung Carbide Insert 16/64", 20/64", 24/64", 28/64", 32/64", 36/64", 40/64", 44/64", 48/64", 52/64", 56/64", 60/64", 64/64" Orifice. (Additional requirement in addition to the above mentioned 20 sets, To be shipped/Supplied Loose)</p>	Sets	3		

28	3-1/8" 5,000 psi WP Double Flanged gate valves(forged material) including Hand wheels. Each gate valve will be provided with i. 02 Nos R-35 Ring Gaskets ii.08 Nos studs (each with 02 Nos Nuts), size 1-1/8" Dia x 7-3/4" length, Zn/Cad/PTFE coated, Material A193 GR B7 Temperature Class 'U' Material Class EE-1.5 (Additional requirement in addition to the above mentioned 20 sets, To be shipped/Supplied Loose)	Sets	10	Lump sum 01 no Gate valve cost including Ring Gaskets and Studs Nuts	
29	One (1) 11" API 5,000 psi WP (Bottom) x 3-1/8" API 5,000 psi WP (Top) Double studded adaptor flange (forged material), with two 1/4" control lines preparation, pack-off flange must have two exit blocks for the 1/4" control line. Exit block must have 1/2" NPT connection for control panel, along with all necessary instrument fittings for continuous control line installation and connection to control panel (the pack-off flange must be compatible with tubing head spool (item # 16) and the tubing hanger (item # 21) (Additional requirement in addition to the above mentioned 20 sets, To be shipped/Supplied Loose)	Nos	2		
30	Sets of studs and nuts each set comprises of 8 Nos studs (each with 02 Nos Nuts), size 1-1/8" x 7-3/4" length, Zn/Cad/PTFE coated, Material A193 GR B7	Sets	5		
31	Gasket, Self Sealing Ring ST/STL R-35	Nos	20		
32	Double Studded Adaptor flange (forged material) 11" 5,000 psi X 7-1/16" 5,000 psi WP complete with studs/nuts and ring gaskets. Maximum thickness not more than 7".	Nos	5		
33	Double Studded Adaptor flange (forged material) 11" 5,000 psi X 11" 10,000 psi WP complete with studs/nuts and ring gaskets. Maximum thickness not more than 7".	Nos	3		
34	Double Studded Adaptor flange (forged material) 11" 5,000 psi X 13-5/8" 5,000 psi WP complete with studs/nuts and ring gaskets. Maximum thickness not more than 7".	Nos	2		
Repair kits (Complete description of all the items in each repair kit must be provided in the technical bid).					
35	Repair kits for Tubing head spool. Each kit consisting of two (2) nos 9-5/8" casing FS seals, Retainer wires & any other part essentially required to service the spool	Sets	5		
36	Repair kits for 2-1/16" 5,000 psi Gate valves e.g. Pins, Bearings, Bonnet Seal, Seat Seal, Stem Packing, O-rings, etc. and any other part essentially required to service the valve. However kit may not include major items e.g. gate	Sets	5		
37	Repair kits for 3-1/8" 5,000 psi Gate valves e.g. Pins, Bearings, Bonnet Seals, Seat Seals, Stem Packing, O-rings, etc. & any other part essentially required to service the valve. However kit may not include major items e.g. gate	Sets	5		


ADEEL SALEEMI
Senior Engineer (PED)
EXT: 2807


MOHAMMAD KAHEEL AHM.
DOE (PED)
EXT 2806.


38	Repair kits for 3-1/8" 5,000 psi Hydraulic actuator e.g. High Pressure Packing, Seals, Bearings, Disks, retainer rings, etc. & any other part essentially required to service the hydraulic actuator	Sets	3		
39	Repair kits for Double studded adaptor flange e.g. O-rings, seal rings etc. Bidder is required to quote if the repair kits are required with their quoted design of adaptor flange at serial no 1.1 & 29	Sets	3		
40	Repair kits for BPV e.g. O-Rings, OD Seals etc. and any other part essentially required to service the BPV	Sets	10		
41	Repair kits for X-Mass tree cap e.g. O-rings, etc. and any other part essentially required to service the Tree Cap	Sets	10		
42	Repair kits for Tubing hanger at e.g. Metallic and soft seals for hanger body and neck, O-rings, ferrule Joint, Locking nuts, Dead Plugs etc. and any other part essentially required to service the tubing hanger	Sets	15		
43	Repair kits for 3-1/8" 5,000 psi Adjustable choke e.g. 01 Stem, 01 Seat, Locking pins, union nuts, retainer ring, Back up ring, Bonnet seal, Seat seal, 01 Stem packing, O-rings, etc. and any other part essentially required to service the Adjustable Choke	Sets	5		
44	Repair kits for Lubricator Assembly e.g. Gland Packing, O-Rings, seals, etc. and any other part essentially required to service the Lubricator Assembly	Sets	5		
45	Repair kits for BOP Test Plug/ Running and retrieving tool for Wear bushing e.g. seals, O-rings (01 set consisting of 02 Nos of Seals/O-Rings, etc.)	Sets	30		
46	Repair Kits for Reducer bushing assembly. Each kit consisting of two (2) nos 7" casing FS seals & any other part essentially required to service the bushing	Sets	5		
47	Repair kits for 3-1/8" 5,000 psi Positive choke e.g. Seals/O-Rings, etc. and any other part essentially required to service the positive choke.	Sets	10		
48	Double Studded Adaptor flange (forged material) 11" 10,000 psi X 11" 15,000 psi WP complete with studs/nuts and ring gaskets.	Nos	2		
49	Total Cost for Sale Items				


ADEEL SALEEMI
 Senior Engineer (PED)
 EXT-2807


 MOHAMMAD KAHEEL ATINELI
 DCE (PED)
 EXT-2807

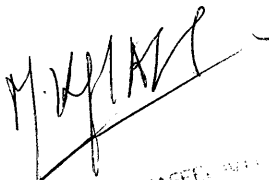
Associated Completion Services		Rates in US \$ (a)	Est. Number of Jobs (b)	Est. Job Duration of each job (c)	Total Cost US \$	Remarks
50	Service Engineer Operating Per Day Rate	Per Day Rate	25	05 Days	axbxc	The operating day rate will be calculated /Evaluated for a 05 Days Job. Total Number of Jobs are approximately 25 Nos
51	Service Engineer Stand By Per Day Rate	Per Day Standby Rate	25	03 Days	axbxc	i. The stand by rates will be applicable when there is a delay encountered in the job and the service engineer has already reached at job location. ii. Standby rates should not be more than 50% of the operating rates. iii. Standby by rates will be calculated /Evaluated for a 03 Days stand by. Total Number of Jobs are approximately 25 Nos
52	Lump Sum Mob/De Mob charges of Service Engineer	Per Mob/De-Mob	25 Visits	N/A	axb	Evaluation will be carried out for approximately 25 Jobs/Visits.
53	Total cost for associated Services inclusive of all applicable taxes and levies except Provincial Sales tax on Services.					
56	Total Cost for Sale Items + Total Cost for associated Services			Financial Evaluation and Order Placement will be on Total Sale Items + Total Services Cost. Bidder is required to quote as per format without fail		
Terms and Conditions:						Bidder to comply and provide all the necessary documents with the Technical Bid
Every bidder must confirm the following conditions in order to qualify for the detailed technical evaluation, all the required supporting documents must be attached with the Technical Bid.						
1	Technical and Financial Bids Bidder are required to submit Technical & Financial bids in two envelopes separately					
2	Bidder, Manufacturer and Local Agent In case the bidder and manufacturer are different than original authority letter from the manufacturer to bidder must be furnished with the technical offer. The bidder will also provide a similar letter in case they have their local agent in Pakistan. The authority letter must be on company letter head, showing the name and contact details official E-mail of the signing authority.					
3	Manufacturing Company API Certificates					
3.i	API-6A The Manufacturer must be certified by API under Specs API-6A for at least Ten (10) years for manufacturing of X-Mass Trees, Tubing Head Spools and accessories.					


ADEEL SALEEMI
Senior Engineer (PED)
EXT: 2807


MOHAMMAD KAHEEL AHMED
DOE (PED)
EXT: 2808.

3.ii	In case the API 6A certificate of the Bidder/Manufacturer does not allow it to use API monogram on any of the critical item required in the tender e.g. Actuator, Choke Valve, Gate Valves, Flanges, BPV etc. and the bidder/manufacturer is quoting these items manufactured by any third party facility/company than the following must be provided with the bid i-Identification of the item ii- The name of the facility from where it will be provided iii- The third party facility should be API-6A certified to API monogram the item. iv- The third party facility should be API-6A certified to manufacture that specific item for 10 years API-6A certificates to be provided. v- Authority letter from the third party facility in favor of the bidder is to be provided. vi. Supply record of third party manufacturer for the individual items being quoted in excess of at least 300 items supplied in the last 10 years.	
4	<u>Supply Record</u>	
4.i	The manufacturer must have a minimum of Ten (10) years experience in the manufacturing of X-Mass Trees, Tubing Head Spools and accessories	
4.ii	A detailed supply record containing year of supply, description of equipment, quantity, customer name/country, contact person's name & address official E-mail, must be provided with the technical bid for the last Ten (10) years.	
4.iii	The manufacturer must have supplied a minimum of 300 sets of 5,000 psi rating X-Mass Trees and Tubing Head Spools to the foreign E&P companies outside the country of their Origin in the last ten (10) years	
4.iv	Material supplied to supply houses will not be acceptable.	
4.v	Bidders or Manufacturers who have provided the supply record and provided X-Mass Trees and Tubing Head Spools to OGDCL in the past and already fulfill the pre requisite criteria are required to submit the copies of purchase orders issued to them by OGDCL	
5	<u>Performance Certificates</u>	
5.i	In case bidder or manufacturer has not supplied X-Mass Trees to OGDCL then it is required to submit the certificates of satisfactory performance issued by authorized officials of at least 3 different multinational E&P companies or other renowned E & P companies (not belonging to the manufacturer's country of Origin) regarding supply of X-Mass Trees, Tubing Head Spools (5,000 Psi Rating) must be provided with the technical bid.	
5.ii	The certificates must either be on the company letterhead or Official Email indicating the Name & Designation of the issuing Personnel along with complete contact details and address. The bidder must provide latest E-mail to directly verify the authenticity of these certificates/Emails from the issuing authority/company.	
5.iii	Certificates/Emails issued by supply houses. etc. will not be acceptable.	
5.iv	Performance of already supplied material will also be taken into consideration. The bid may be rejected subject to poor performance of already supplied material of similar rating/size	
6	<u>Financial Reports of the Bidder and Manufacturer</u> In case bidder or manufacturer has not supplied X-Mass Trees to OGDCL then it is required to submit original print of the annual audited accounts reports for the last 3 consecutive years (along with attested English Copies) of the Bidder and Manufacturer separately (In case of Bidder & Manufacturer are not same) in order to verify its liquidity position, revenues, profitability of the company.	
7	<u>Delivery Requirements</u> i. The desired delivery period is 06 months C&F Karachi from the date of LC establishment. ii. In case of local Manufacturer, bidder needs to confirm delivery at OGDCL I-9 Store Islamabad or Korangi Base Store Karachi	


ADEEL SALEEMI
Senior Engineer (PED)
EXT: 2807


MOHAMMAD KAFEEEL
DCE (PED)
Ext: 2806

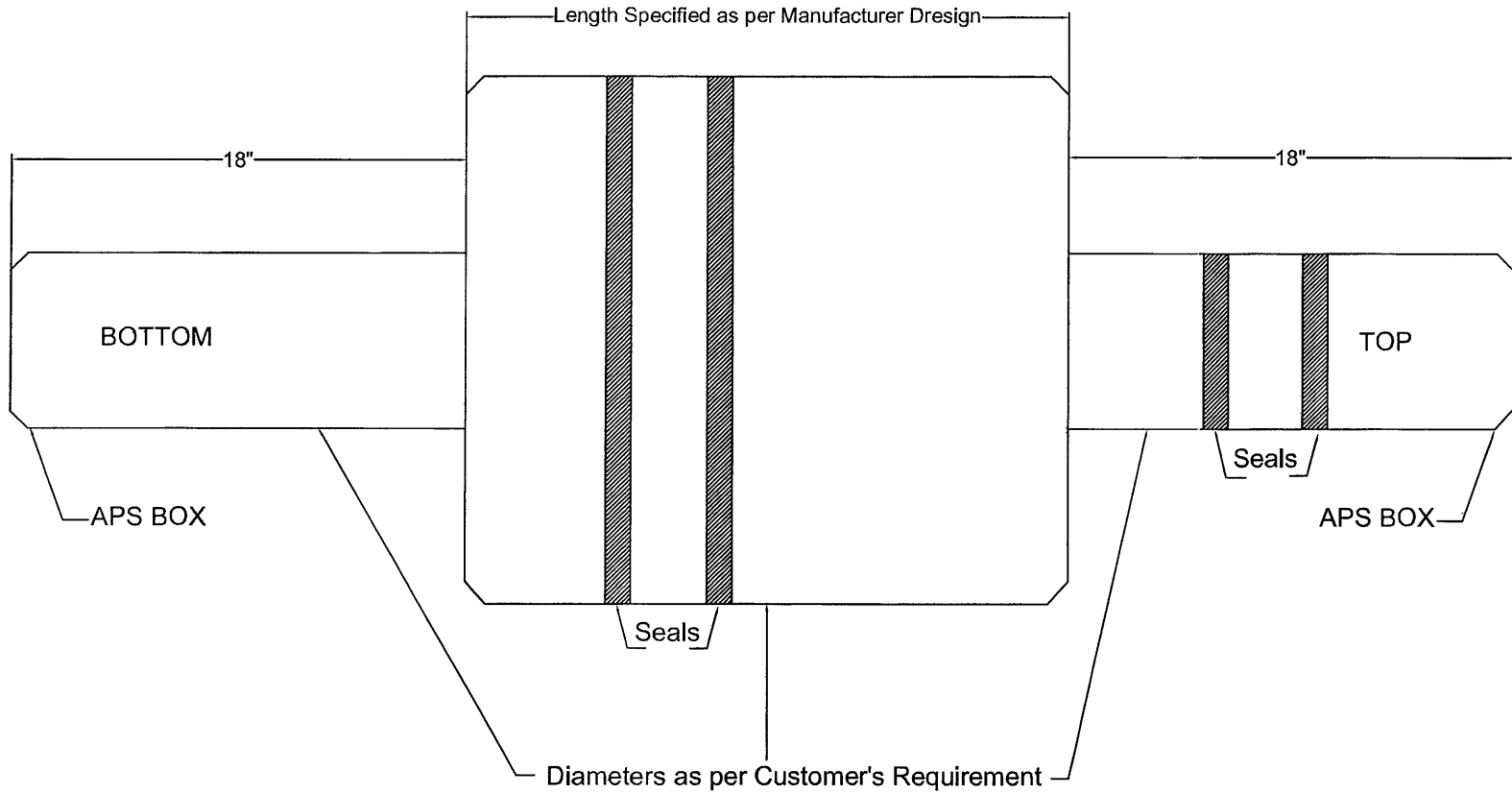
	<u>Local Manufacturer</u> In case of local Manufacturer who is claiming the price preference, the bidder will have to provide the following details regarding the finished and semi-finished products being imported for this tender. i. Identify the name of manufacturer(s) of the finished products, provide its (their) authority letter(s) and its (their) API-6A for the least ten (10) years, ii. Bidder needs to identify the name of the Mill(s)/Manufacturer(s) supplying the finished and semi-finished products, provide its (their) authority letter(s) and its (their) API-6A for the last ten (10) years, Q1 or relevant ISO certificates. iii. Supply record of third party manufacturer for finished and semi finished items being quoted in excess of at least 300 items individually in the last 10 years	
8		
9	<u>Technical and Financial Evaluation Criteria</u>	
9.i	The technical and financial evaluation will be carried out on complete package basis. Bidders are requested to submit their bids as per SOR without missing any line item	
9.ii	The bidders are advised to quote all the line Items and in case of any issue the bidders should clarify during pre bid submissions clarifications and ensure the quote of each and every line Item.	
9.iii	Bidders must quote every line item, even if same is not required in their case. If any item is not required then they can mention this in remarks column.	
9.iv	<u>Technical Data Sheets and Technical Literature</u>	
9.v	Bidders are required to submit the technical data sheets of all the line items individually must specifying the metallurgy, pressure rating, temperature rating, ODs, IDs, Min Bore IDs, Lengths, Threads etc.	
10	<u>Material Test Certificates/Certificates of Conformance</u> The bidder to confirm that the material test certificates and certificates of conformance will be provided with the shipping documents in case of award of contract	
11	<u>Forged Material</u> Only forged Tubing head spools, Pack off flange, Gate valves, Flanges etc. will be acceptable, bidder to provide a clear cut confirmation in this regard.	
12	<u>Services Setup</u>	
12.i	The Bidder/Manufacturer to provide documentary evidence that they have their own or authorized services set up in Pakistan with at least 2 to 3 competent and experienced service engineers in Pakistan for successful execution of jobs.	
12.ii	The Authorized/Local services set up of bidder to provide the Pictures & Street Address of its local set up. OGDCL Team may visit Un Announced to Inspect the set up.	
12.iii	The Authorized/Local services set up should have provided services to E & P companies in Pakistan. Details of the services provided to be attached with the technical bid. In addition service provider will ensure that at least two engineers will always be available for OGDCL callout Notice.	
12.iv	The service provider must have sufficient number of service engineers to handle multiple simultaneous jobs	
12.v	The bid proposal should essentially include the CVs of Engineers that are expected to be deployed for the job, the lead service engineers must have more then 20 nos X-Mass Trees jobs experience, whereas the other must have a minimum of 10 X-mass Trees jobs experience. OGDCL will have the right to ask the service provider to replace the engineer while the job is being executed.	
12.vi	The Bidder will ensure to send Local Service Engineer at Job location within 02 days (maximum) after receiving mobilization notice from OGDCL.	
12.vii	The bidder to quote lump sum Mob/De-Mob charges for the service engineer which should include all transportation charges, hotel stay charges (if any) during the journey to the OGDCL site, etc.	
12.viii	The bidder to confirm that the quoted services rates will be valid till the consumption of the purchase order equipment and its associated service order.	

12.ix	The bidder to confirm that operating day rate will commence/applicable if the service engineer reaches at job location on or before 6 pm, operating day rate of service engineer on arrival and departure will only be included in the service ticket if the working hours on arrival day and departure day is at least 6 hours (1/4 day) on both occasions or mutually agreed at the job location.	
12.x	The stand by rates will be applicable when there is a delay encountered in the job and the service engineer has already reached at job location. Standby rates should not be more than 50% of the operating rates. Bidder is required to quote standby rates separately	
12.xi	Only one Service Engineer charges will be applicable to carry out the completion Job	
12.xii	Boarding lodging of Service Engineer at job location site will be the responsibility of OGDCL. However OGDCL will not provide any transport to service Engineer/tools to reach at rig site, it will be the exclusive responsibility of the service provider to arrange the transportation for the service engineer/tools from the base to the OGDCL site and back to the base.	
12.xiii	The Payment will be made as per actual services rendered at any OGDCL well on as and when required basis.	
12.xiv	The service rates are to be quoted in US Dollars, however the payment mode will be in 100% equivalent Pak rupees as per the exchange rate prevalent at the date of payment. The Payment will be made as per actual days for which the services are rendered.	
13	<u>Material Specifications</u> The bidder is required to quote only forged material, as per API 6A Latest Edition, PSL-3, PR-2, Temperature Class 'U' Material Class EE-1.5' and Material Class FF-1.5 for Choke Valves as per tender requirement	
14	<u>Tubing Hanger Design</u> Bidder is required to clearly specify the minimum, maximum and optimum torques. The length and diameter of the tubing hanger bottom at Serial no 21 should be 18" suitable for the application of 3-1/2" tubing power tong	
14.i	<u>Threading Facility of Tubing Hangers and X-Mass Tree Top Flange female pick up Threads</u> Bidder must submit the current API 5CT license(s) of the threading facilities which will be threading the Hydril CS or equivalent premium threads of tree top cap female pickup threads (Serial # 1.5), tubing hangers (Serial # 21), and X-overs (Serial # 22). API 5CT must be valid at the time of bid submission.	
14.ii	<u>Surface Treatment of Tubing Hangers, X-overs, X-Mass Tree Top Flange female pick up Threads</u> Bidder is required to confirm that the threads on the tubing hangers, X-overs and top flange inside threads will undergo proper surface treatment, in order to prevent thread damage due to galling and other threads problem as per material class EE-1.5.	
15	<u>The Gate Valves must be of Forged Material and also fulfill the following requirements</u>	
15.i	The gate valves with split gates are not acceptable, only solid gates are acceptable. Bidder to provide a clear cut confirmation in this regard in the technical bid.	
15.ii	Body bushing must be free floating (pressed in body bushings are not acceptable).	
15.iii	Gate must seal metal to metal against the body bushing and body bushing must seal metal to metal against valve body i.e. all seals must be metal to metal.	
15.iv	Stem must be non rising type	
15.v	Valve stem and bonnet must have back seating feature (metal to metal) to allow stem packing change while under pressure.	
15.vi	Sealant injection ports on the valve body are not acceptable.	
15.vii	The stem packing should be non-elastomeric and protected by a graphite jacket against the well bore fluids No Chevron or lip type seals are acceptable.	
15.viii	All the Gate valves should be bi-directional feature	

16	<u>Third Party Inspection (TPI)</u>	
16.i	OGDCL will arrange the Third Party Inspection, Bidder is required to confirm that they will provide necessary assistance to Third Party Inspection (TPI) Company. Third Party Inspection reports verified by OGDCL will be provided with the shipping documents for LC encashment, Bidder is required to confirm that they will timely inform the relevant TPI company and provide the necessary assistance during the inspection.	
16.ii	<u>Tentative Scope of Third Party Inspection</u>	
16.iii	<u>Material Test Certificates (MTCs)</u> Review of Material Test Certificates (MTCs) of all the equipment's in order to ensure that all materials are as per purchase order specifications API 6A latest Edition, PSL-3 PR-2, Temperature class 'U', Material class EE-1.5 and Material class FF-1.5 for choke valves as per purchase order	
16.iv	<u>PR2 Test Reports</u> TPI company will review the PR2 tests reports of equipment in accordance with API 6A latest Edition where applicable like Gate valves, Safety valves, Choke valves etc.	
16.v	<u>Tubing Hangers, Top Cap female pick up Hydril CS or Equivalent Premium Threads</u> TPI company will review Certificate of Conformance from Threading company that they have Threaded the Tubing hangers, X-overs and Top flange female pick up threads as per purchase order Hydril CS threads or equivalent premium threads In case all the documents are provided than simple hand tight of pin x pin X-over with Tubing Hanger and top flange female pick up threads in order to check compatibility will be sufficient to avoid any damage to the material. The compatibility test of all the Tubing Hangers (BxB), female pick up threads of tree top with pin x pin X-overs will be performed of 25% of the ordered quantities.	
16.vi	<u>Hydro Testing of Equipment</u> Third Party Inspector will witness 25 % consignment Hydrostatic test of Wellhead assemblies and Tubing head spools in assembled form will be performed by manufacturer by applying pressure individually as per API 6A latest edition testing procedure for 5,000 psi tubing head spools and X-mass trees. Report will be prepared by TPI and submitted to OGDCL before final inspection.	
16.vii	<u>Dimensional Inspection</u> Third Party Inspector will inspect/witness the dimensional check of all other major equipment's as per purchase order and manufacturer drawings e.g. ODs, IDs, Min Bore IDs, Lengths etc.	
16.viii	<u>Finished Equipment Inspection</u> Third Party Inspector will visually inspect the finished material in order to verify the equipment is brand new/unused and as per purchase order specifications and quantities in the open packing boxes.	
16.ix	<u>Photographs of Consignment</u> TPI Company will submit all purchase order items photographs along with the TPI report to OGDCL prior to submission of final inspection report.	
16.x	<u>Boxing and Packing</u> Third Party Inspector will confirm that consignment boxing and packing is as per API standards	
16.xi	<u>Submission of Inspection Report/Inspection Release Note by TPI;</u>	
16.xii	Place the signature /stamp on inspection release note/inspection report electronically in the original pdf files of inspection release note and inspection report.	
16.xiii	Mention OGDCL purchase order number and LC number in the first page of final inspection report/inspection release Note	
<u>Other Terms & Conditions</u>		
1	Payment of Service Charges will be made through LC / TT / Cross Cheque upon completion of services and against verified invoices by Indenting Department.	
2	Clean Acceptance of terms & conditions of Tender Document, Schedule of Requirement is required from Bidder.	

3	Shipment from ACU Member Countries: In case of Shipment from ACU Member Countries, the LC beneficiary should be of that particular country from where the consignment is being shipped.	
4	Bidder to submit separate Data Summary Sheet (Annexure-E) for LC beneficiary of Material Providing Entity and Services Providing Entity.	
5	<p>Foreign Procurement Payment Terms (Competitive Bidding, Pre-qualification and Proprietary Mode of Procurement): Following payments methods have been approved for Competitive Bidding/Press Tender, Prequalification and Proprietary mode of procurement effective from February 27, 2018.</p> <p><u>i. Tender value less than or equal to US\$ 200,000:</u> Payment to the Contractor/ bidder in foreign currency shall be made by establishing in favor of the Contractor an irrevocable Letter of Credit (hereinafter called the L/C). 70 % Payment (s) under the L/C will be made for the FOB/ CFR / CPT (as the case may be) price of material of each shipment upon submission of the shipping documents. Balance 30% Payment will be released after receipt, inspection and acceptance of material.</p> <p><u>ii. Tender value more than US\$ 200,000:</u> Payment to the Contractor/ bidder in foreign currency shall be made by establishing in favor of the Contractor an irrevocable Letter of Credit (hereinafter called the L/C). 80 % Payment (s) under the L/C will be made for the FOB/ CFR / CPT (as the case may be) price of material of each shipment upon submission of the shipping documents. Balance 20% Payment will be released after receipt, inspection (in addition of pre-shipment inspection) and acceptance of material.</p>	
6	<p>1) The Bidding Procedure is "Single Stage - Two Envelope Procedure": All bidders are required to carefully read bidding procedure and terms & conditions elaborated in OGDCL's Tender Document uploaded on Company's website under heading "MASTER SET OF FOREIGN TENDER DOCUMENT (PRESS-SINGLE STAGE TWO ENVELOP) 05-01-2022</p>	

1 1 1 1



Change	Rev	Date

UNLESS OTHERWISE SPECIFIED DIMENSIONS ARE IN INCHES ANGLES $\pm X.X^\circ$ 2 PL $\pm X.XX$ 3 PL $\pm X.XXX$	DATE	
	DRAWN	
	CHECKED	
	CLIENT	
	JOB #	
Material:		

TITLE: Tubing Hanger		
SIZE A4	Drawing No:	REV
SCALE:	WT:	SHEET 1 OF 1

**3-1/8" 5K X-MASS TREE Trim EE-
1.5 Temp Class U**

TREE TOP ASSY OTIS 'G' 5-3/4" - 4 ACME
3-1/2" 10.3 ppf. Hydril CS or Equivalent
Premium Female Pickup Threads

GATE VALVE ASSY, SWAB, 3-1/8" 10K

INSTRUMENT FLANGE
3-1/8" 5K

POSITIVE
CHOKE ASSY
FF-1.5

ADJUSTABLE
CHOKE ASSY
FF-1.5

STUDED CROSS ASSY
3-1/8" 5K

UMV HYDRAULIC ACTUATOR ASSY

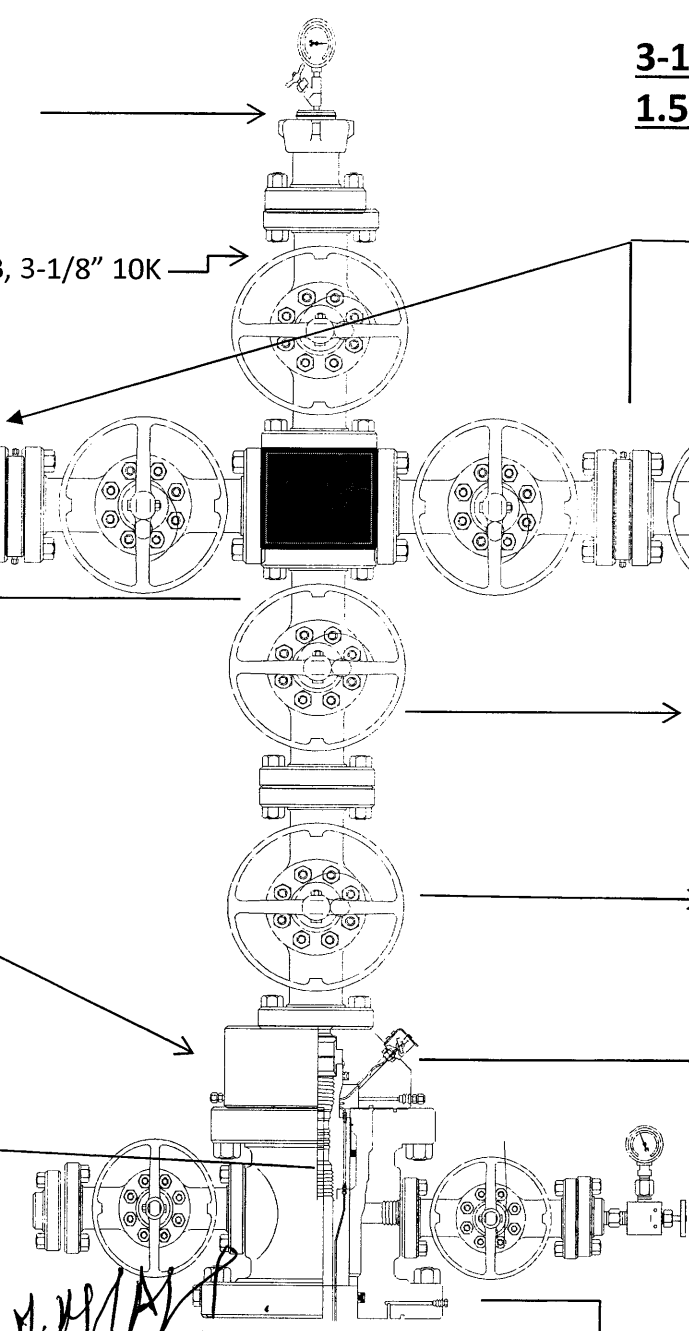
TWO EXIT BLOCKS FOR 1/4" Control
Line WITH 1/2" NPT CONNECTION

GATE VALVE ASSY, LMV, 3-1/8" 5K

Tubing Hanger with provision of two
1/4" Continuous Control Line with 3-
1/2" 10.3 ppf. Hydril CS or Equivalent
premium threads Box and Box
Connection Double neck seals (
Metallic & Elastomer) with BTM
minimum 18"

ADAPTER ASSY
11" 5K BOTTOM X 3-1/8" 5K TOP

TUBING HEAD SPOOL
11" 5K BOTTOM X 11" 5K TOP
2-1/16" 10K SIDE OUTLETS



M. KAFEEL AHMED
DCE (PED)
10/2022

Reducer Bushing

