



OIL & GAS DEVELOPMENT COMPANY LIMITED

Request For Quotation (LOCAL)

OGDCL House,
Jinnah Avenue,
Islamabad Pakistan

Header Note: PROCUREMENT OF MECHANICAL SEALS

Tendor Enquiry No: 6300000112 / SCM LOCAL /300 / DAKHNI FIELD / 2022

Evaluation Criteria: Full Consignment Basis

Bidding Procedure: Single Stage Two Envelope

Vendor: OGDCL CB MODE LOCAL / FOREIGN(1006187)

Due Date:

Bid Bond Value: Rs. 99,000/-

Purchase Req: 30000355

Attachment (If Any): Yes

SR#	Material No	Material Description	Unit	Quantity	Make Brand	Unit Price (PKR) Inclusive Of All Taxes Except GST/PST	Unit Price (PKR) Inclusive Of GST/PST	Total Price (PKR) Inclusive of GST/PST	Delivery Period (Days/Months)	Deviation from Tender Spec. if Any	Plant	
											Plant Code	Plant Name
1.	51-01586	SEAL,MECHANICAL COMPLETE, QB2750/5A1N P# 815753-001 ,Dwg# 6035008-B FOR GA-801-GA-01, INGERSOL RAND PUMP, TYPE 6X18SE OR EQUIVALENT	NO	3							0225	DAKHNI FIELD
2.	51-03867	SEAL, MECHANICAL "FLEXIBOX". P# RRAL-036A-A5AY-U001, QB-1750-5A1N, Drawing# 6035028-C, FOR 803-GA-01 A/B, INGERSOL RAND PUMP OR EQUIVALENT	NO	3							0225	DAKHNI FIELD
3.	51-03866	SEAL MECHANICAL COMP. P# 5084968140, Type: RROR-0320-Y010 (CBQ), FOR 902-GA-01 A/B, 910-GA-1 A/B, GA-401 A/B, GA-404, 912-GA-01 A/B, "WORTHINGTON" PUMP TYPE 1-1/2 HAS 52. OR EQUIVALENT	NO	2							0225	DAKHNI FIELD
4.	51-01461	SEAL,MECHANICAL COMPLETE P# RREL-0506-92CY-U013 87460106 OR EQUIVALENT	NO	2							0225	DAKHNI FIELD
5.	51-00777	SEAL,MECHANICAL COMPLETE (7AFY) P# MSA2001613 7AFY, FOR GA-403, CENTRIFUGAL LEAN AMINE SOLUTION, 4X6X10-1/2MSD 10 STAGE "DAVID BROWN" OR EQUIVALENT	NO	1							0225	DAKHNI FIELD

Bid Validity Period: 180 DAYS FROM TECHNICAL BID OPENING DATE

Delivery Period: WITHIN 240 DAYS AFTER ISSUANCE OF PO

Terms of References

OGDCL Intends to Procure the Mechanical Seals for the Pumps Installed on critical flow path as under details:-

SOR Sr#	Description	DWG NO	MAKE	UOM	QTY	Country Of Origin
01	SEAL MECHANICAL COMPLETE PART #Y50540, TYPE:PROR:0320-Y010(CBQ) 902-GA-01 A/B HC flare K.O pump	DWG NO.24672	FLEXI BOX S.P.A/ EQUIVALENT	No	03	
02	SEAL MECHANICAL COMPLETE SEAL TYPE: RROR/L -0700 - 7AFY-U018 (CBQ) GA-403A/B Lean Amine circulation pump David Brown Pumps	DRG # FB- 36174	FLEXI BOX S.P.A / EQUIVALENT	No	03	
03	SEAL, MECHANICAL COMPLETE TYPE: RREL-0506-92CY-U013 (MBQ) 911-GA-01A/B LPG LOADING PUMP SEAL Worthington Pumps	DWG NO.FB36535	FLEXI BOX S.P.A / EQUIVALENT	No	02	
04	SEAL MECHANICAL COMPLETE SEAL TYPE :QB 2750 801-GA-01A/B Cooling Water Circulation Pump For: Ingersoll-Rand Pumps	DWG # 6035008-C	BORG- WARNER / EQUIVALENT	No	02	
05	SEAL MECHANICAL COMPLETE TYPE :QB-1750(5A1N) 803-GA-01 A/B Potable Water Pump For Ingersoll-Rand Pumps	DWG # 6035028-C- 001	BORG- WARNER / EQUIVALENT	No	01	

1. Bidder must provide the previous purchase order of similar supplies in Oil and Gas Sectors with in Pakistan or internationally.
2. Bidder must confirm that quoted mechanical seals are 100% fit in size and function/metallurgy for Pumps models mentioned by OGDCL. The mechanical seals to be provided from OEM.
3. Bidders quoting Equivalent mechanical seals must provide a Certificate from at least three E&P companies of foreign jurisdiction other than bidders/manufacturers own country, stating that equivalent (quoted parts) are

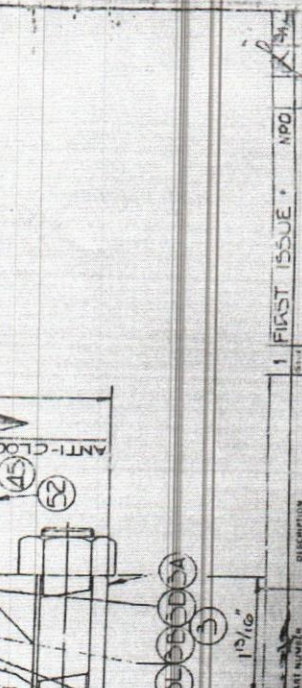
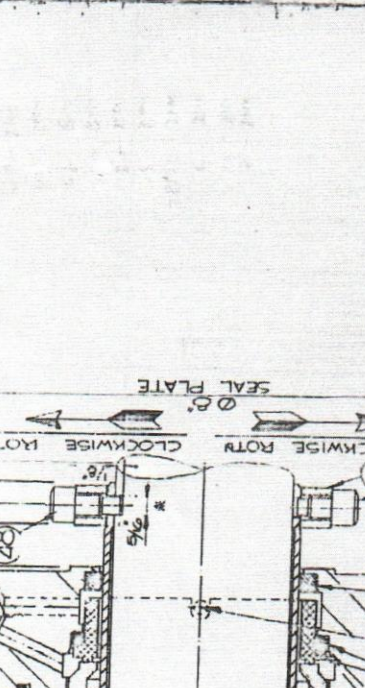
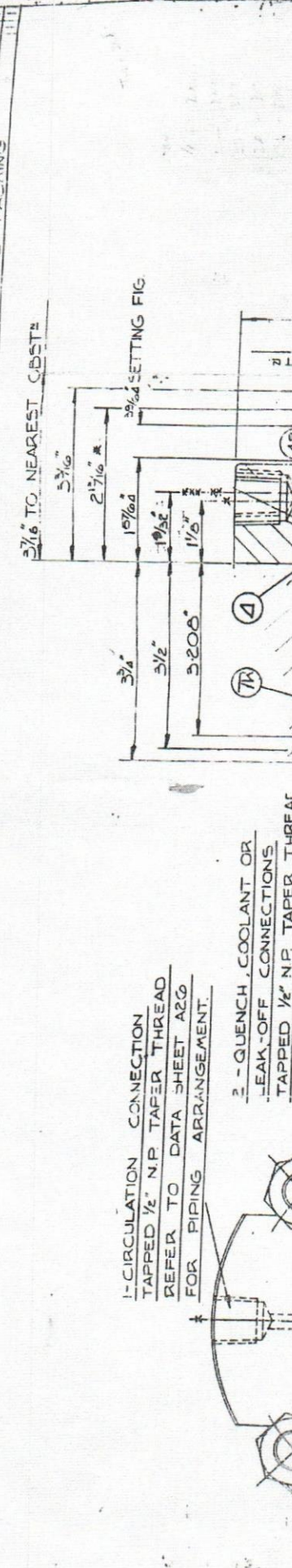
Signed and Seal Stamped TOR

used by them and performance of such parts is found satisfactory. Copies of Purchase Orders (unpriced) must also be provided. The certificate(s) / sale record is mandatory and due to non-submission thereof, the bid will be rejected.

4. If bidder found any ambiguity in part nos., it should be cleared prior to bid opening date (Drawing are attached).
5. Mechanical seals must be in original OEM Packing.
6. Mechanical seals must be new & free from any defect.
7. If bidder found any change/update/superseded part nos., it should be incorporated in bid with OEM confirmation.
8. Mechanical seals must have standard OEM warranty/guarantee.
9. Delivery period is 240 days from date of issuance of PO on FOR.
10. Bidder must confirm country of origin in technical bid.
11. Bidder should submit the complete compliance of TOR & OGDCL T&C's duly signed and stamped.

Signed and Seal Stamped TOR

REF	PART N.	DRG NO.	DESCRIP	QTY	BY	CMP. N.	DESCRIPTION
1	5642	MT 1236	STATIONARY SEAL RING	1		MT 1236	STATIONARY SEAL RING
2	1350	262	STATIONARY SEAL RING	1		262	STATIONARY SEAL RING
3	60406	4562	ROTARY SEAL RING	1		INT 27849	ROTARY SEAL RING
4	48561	4691	ROTARY SEAL RING	1		INT 24820	ROTARY SEAL RING
5	78205	154	SPRING RING	1		INT 1240	SPRING RING
6	78205	154	SPRING RING	1		INT 1246	SPRING RING
7	75647	4002	SEAL PLATE	1		FB33773	SEAL PLATE
8	75648	154	SEAL PLATE	1		FB33773	SEAL PLATE
9	30451	154	PIN	1		30451	PIN
10	10642	195	SAFETY PUSH	1		INT 29075	SAFETY PUSH
11	10642	263	PIN SLEEVE	1		D3752	PIN SLEEVE
12	6205	262	SEAL PLATE	1		6205	SEAL PLATE
13	6205	262	SEAL PLATE	1		6205	SEAL PLATE



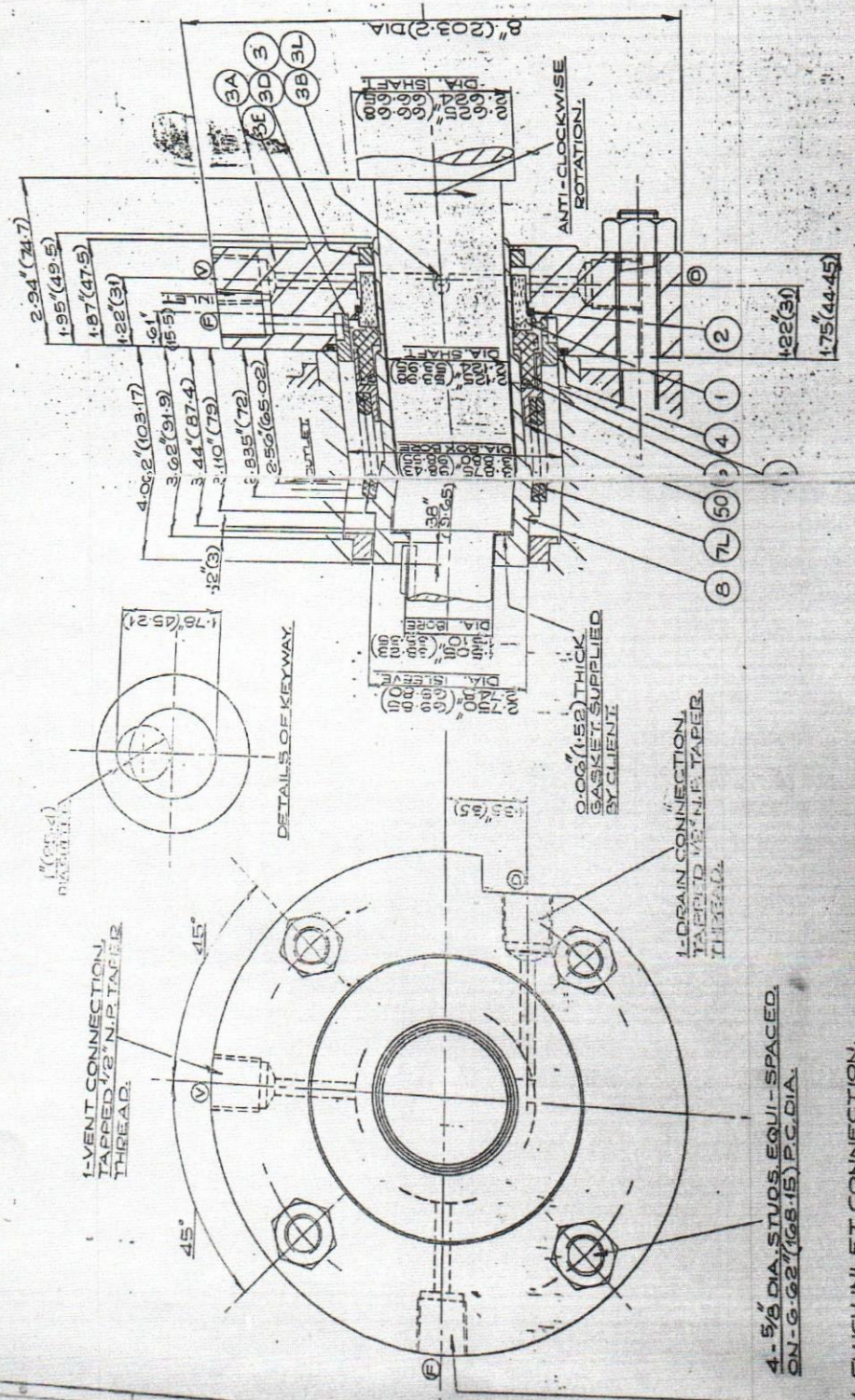
NOTE: ENSURE REF'S 4 & 5 ARE SECURED N SHAFT & SLEEVE PRIOR TO START-UP.

CUSTOMER DRAWINGS		SEAL LAYOUTS: H-4562 31090		SEAL TYPE		BLVD MAKER		DATE		DRAWING APPROVED BY		DATE		CUSTOMER'S DRAWING NO.		CUSTOMER'S ORDER NO.	
1	900	1	1	1	1	1	1	1	1	1	1	1	1	1	1	1	1

ITEM NO.	DESCRIPTION	QUANTITY	UNIT
1	STATIONARY SEALING P.K.	1	PC
2	ROTARY SEALING P.K.	1	PC
3	SPINDLE (LEFT HAND)	1	PC
4	ROTARY SEAL RING CARRIER	1	PC

REV	DATE	BY	DESCRIPTION
1	01/12/86	J.M.	INITIALS
2	01/12/86	J.M.	INITIALS
3	01/12/86	J.M.	INITIALS
4	01/12/86	J.M.	INITIALS
5	01/12/86	J.M.	INITIALS
6	01/12/86	J.M.	INITIALS

REF	PART NO.	DESCRIPTION	QTY	UNIT
1	147.5	SEAL RING	1	PC
2	147.5	SEAL RING	1	PC
3	147.5	SEAL RING	1	PC
4	147.5	SEAL RING	1	PC
5	147.5	SEAL RING	1	PC
6	147.5	SEAL RING	1	PC
7	147.5	SEAL RING	1	PC
8	147.5	SEAL RING	1	PC

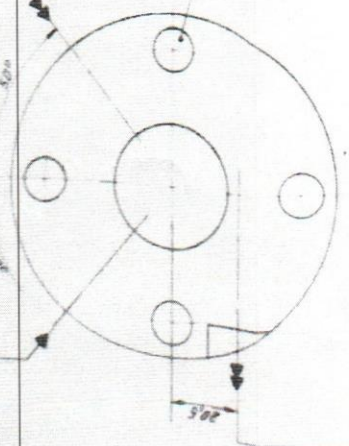


CUSTOMER DRAWING		DATE		DRAWN		CHECKED		APPROVED	
3600673-0099		44922		DATE 12.9.86		DRAWING APPROVED BY		DATE	
CUSTOMER ORDER NO.		DRAWING NO.		DATE		DRAWING APPROVED BY		DATE	
3600673-0099		44922		12.9.86		DATE 12.9.86		DRAWING APPROVED BY	
CUSTOMER ORDER NO.		DRAWING NO.		DATE		DRAWING APPROVED BY		DATE	
3600673-0099		44922		12.9.86		DATE 12.9.86		DRAWING APPROVED BY	

STAMPING BOX SKETCH: 3600673-0099
 3-14047
 P. SOCIAL NO: 6045028
 PUMP MAKER
 30"A-LINE
 GERSOLL-BAND
 6x440x

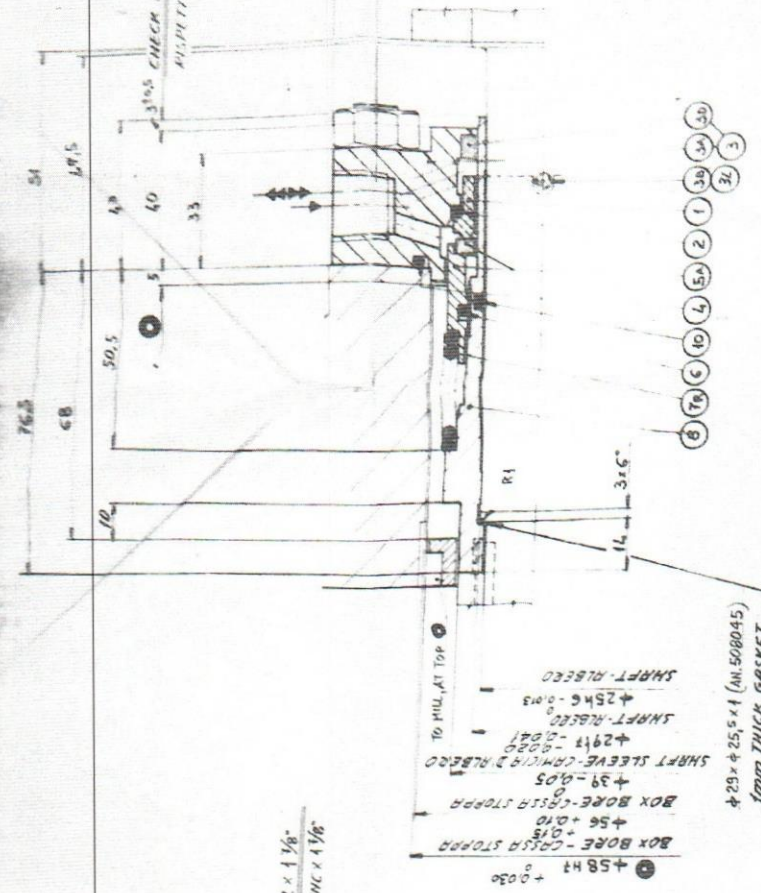
BL. 1310
 QUENCH INLET 1/2" NPT DIA
 ENTRATA QUENCH 1/2" NPT

QUENCH INLET 1/2" NPT DIA
 ENTRATA QUENCH 1/2" NPT



4 STUDS 3/8" - 16 UNC DIA x 1 1/8"
 N° 4 PEGNONIERI x 3/8" 16 UNC x 1 1/8"

QUENCH OUTLET 1/2" NPT DIA
 USCITA QUENCH 1/2" NPT



CLOCKWISE ROTATION
 ROTAZIONE OROLIA

SUPPLIED BY CLIENT
 GARANZIAZIONE SP 1mm
 FORNITA DAL CLIENTE

1 FIT O-RING 1324 OR FLEX-O-RING 42518
 MONTARE O-RING 1324 OPPURE FLEX-O-RING 42518

ITEM NO	QTY	DESCRIPTION	MATERIAL
10	1	O-RING	P.T.F.E.
8	21488	PACKING	STAINLESS STEEL
7	FB1246	SHRT SLEEVE	STAINLESS STEEL
6		HOLLOW WHEEL	STAINLESS STEEL
5	59914	RIGHT HAND SPRING	P.T.F.E.
4	60426	PACKING	PURCHASER'S SPECIFICATION
3	60496	ROTOR	STAINLESS STEEL
2	7338	ROTARY SEAL RING BODY	STAINLESS STEEL
1	10840	ROTARY SEAL RING COMPLETE	P.T.F.E.
30	65025	ROTARY SEAL RING ASSEMBLY	BRONZE
36	1497	O-RING	STAINLESS STEEL
37	100603	PACKING	STAINLESS STEEL
38	100653	FLANGE	STAINLESS STEEL
2	1326	PACKING	P.T.F.E.
1	5293	WHEEL	CORROSION RESISTANT

BRAND: SMAGGI - F.P. S.P.A.
 VIA S. GIUSEPPE 100
 20136 MILANO, ITALIA

CUSTOMER	WORTHINGTON SUD	PRODUCT OR SERVICE	BRACKET RS 2
ADDRESS	1 1/2 HAS 62	DATE	29-7-85
PHONE	2900 899	SCALE	1:1
TELETYPE		CHECKED	
		APPROVED	
		DESIGNED	
		DRAWN	
		OPERATIONS	
		INSPECTION	
		REVISIONS	
		REVISIONS DESCRIPTION	
		MATERIAL	
		MECHANICAL SEAL TYPE	
		TECNICO TIPO	
		PROJ. NO.	Y50540

Y50540

DATA SHEET AND BILL OF MATERIAL

Use the appropriate code in the bill of material to identify the material. The code is defined by the material description, the material specification, the material grade, and the material quantity.

QTY	DESCRIPTION	UNIT	ITEM NO	LINE NO
1	21500 EXPLOSION PROOF GASKET	EA	46239	05
6	21557 MS SET SCREW 20	EA	490402	0Y
1	21554 RETAINING RING	EA	260003	08
1	21504 FLANGE BUSHING	EA	26999	0J
1	21509 SEAL RING	EA	81000000	0I
1	21500 FLANGE GASKET	EA	4400202	0R
1	21517 EXPLOSION PROOF RING	EA	154762	0B
1	21515 ANODIZED RING	EA	660396	08
1	21514 SUBSTANTIAL RING	EA	154760	0E
1	21513 SEAT GASKET	EA	660700	0V
1	21510 SEAL RING	EA	660225	0S
1	21511 SEAL RING	EA	2400000	08
1	21512 SEAL RING	EA	2400005	0B
1	21513 SEAT GASKET	EA	2400005	0B

MECHANICAL SEAL ASSEMBLY

DATE: 01-23-78
 DESIGNER: R. J. 78
 CHECKED: R. J. 78
 APPROVED: R. J. 78

WINDMILL MANUFACTURING
 1500 N. WINDMILL AVENUE
 GAITHERSBURG, MARYLAND 20878-1111
 TEL: (301) 350-1000
 FAX: (301) 350-1001

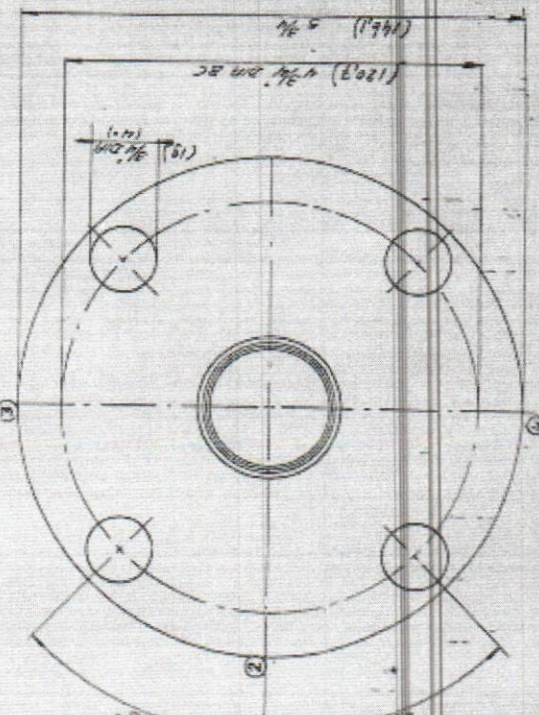
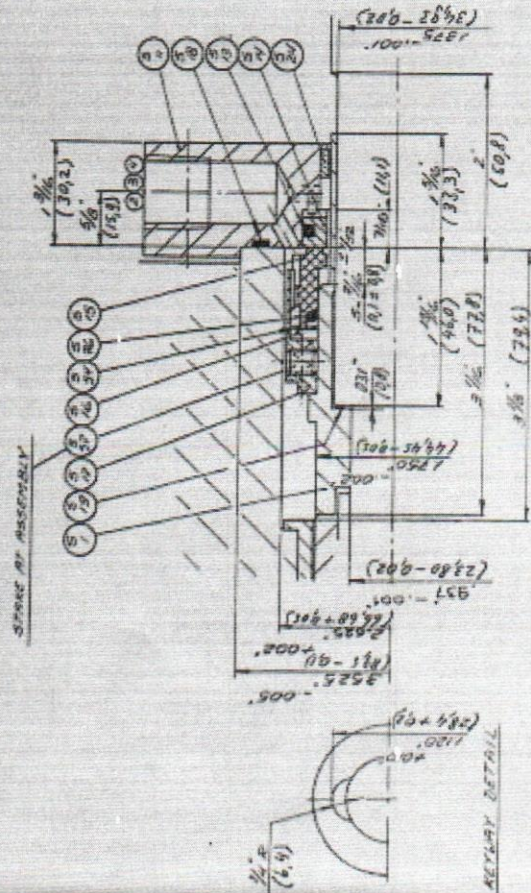
ITEM NO: 6035028
 QUANTITY: 1
 UNIT: EA



Dimensions between (...) are in mm.

② ALUMINUM NPT
 ③ GUNNITE NPT
 ④ BRASS NPT

LR PUMP TYPES
1XTA
1VXALAIN
3XTALAIN
4XTALAIN
5XTALAIN
6XTALAIN
7XTALAIN
8XTALAIN
9XTALAIN



FINAL DRAWING
 ALL DIMENSIONS ARE IN INCHES UNLESS OTHERWISE SPECIFIED.
 ALL DIMENSIONS OF MATERIAL ARE SHOWN IN PARENTHESIS.
 DIMENSIONS BETWEEN PARENTHESES ARE IN MILLIMETERS.
 DIMENSIONS OF MECHANICAL SEALS
 ARE GIVEN IN INCHES AND MILLIMETERS.

DATE: 01-23-78
 DESIGNER: R. J. 78
 CHECKED: R. J. 78
 APPROVED: R. J. 78

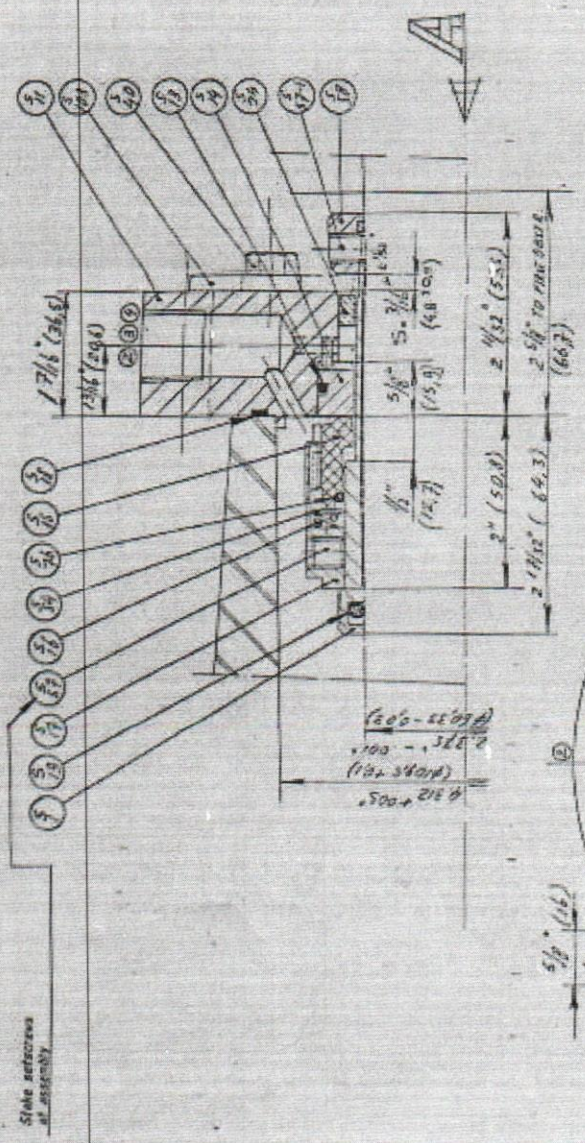
WINDMILL MANUFACTURING
 1500 N. WINDMILL AVENUE
 GAITHERSBURG, MARYLAND 20878-1111
 TEL: (301) 350-1000
 FAX: (301) 350-1001

VIEW A-A

THIS DRAWING IS THE PROPERTY OF BORG-WARNER CORPORATION. IT IS TO BE KEPT IN CONFIDENCE AND NOT TO BE REPRODUCED OR TRANSMITTED IN ANY FORM OR BY ANY MEANS, ELECTRONIC OR MECHANICAL, INCLUDING PHOTOCOPYING, RECORDING, OR BY ANY INFORMATION STORAGE AND RETRIEVAL SYSTEM, WITHOUT THE WRITTEN PERMISSION OF BORG-WARNER CORPORATION. THE DESIGN AND CONSTRUCTION OF THIS DRAWING ARE THE PROPERTY OF BORG-WARNER CORPORATION. THE DESIGN AND CONSTRUCTION OF THIS DRAWING ARE THE PROPERTY OF BORG-WARNER CORPORATION.

DATA SHEET AND BILL OF MATERIAL

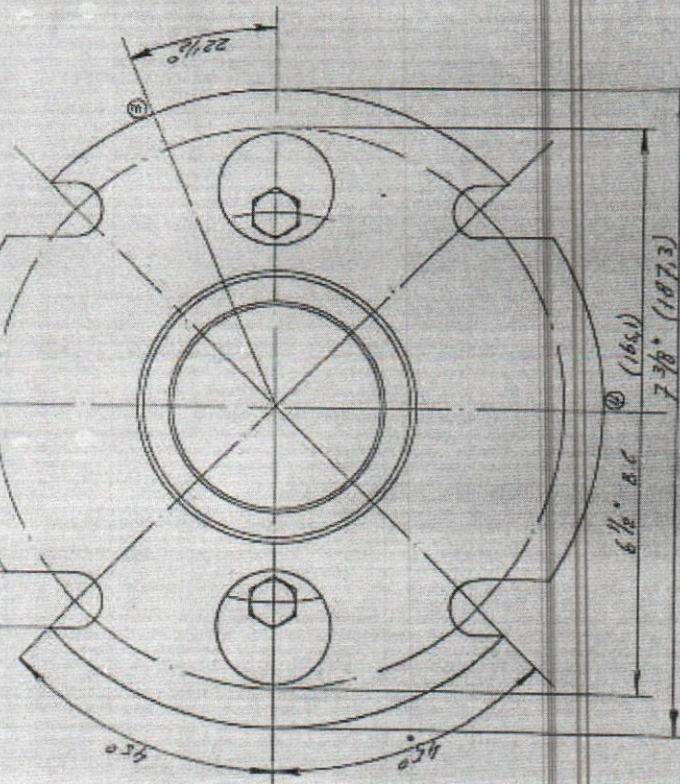
QTY	DESCRIPTION	UNIT	QTY	DESCRIPTION	UNIT	QTY	DESCRIPTION	UNIT	QTY	DESCRIPTION	UNIT	QTY	DESCRIPTION	UNIT	QTY	DESCRIPTION	UNIT	QTY	DESCRIPTION	UNIT	
8	Setting Plate	DB	4807625	DB	216																
8	Cap Screw	AC	492832	AC	4356-RT																
4	Core Collar	DB	676446	DB	216																
24	Set Screw	CI	689633	CI	514-8235																
6	ROTOR, FACE GASKET	CS	550222	CS	NITROL																
2	RETAINING RING	DY	140477	DY	Alloy-20																
4	FLANGE BUSHING	DB	658244	DB	316																
4	SLEEVE GASKET	FJ	670948	FJ	514-84																
4	FLANGE GASKET	CS	569332	CS	NITROL																
4	SPRING WASHER	CR	480265	CR	Imp. A286																
4	SPRING WASHER	DB	154786	DB	316																
24	SPRING WASHER	DB	668838	DB	316																
4	INCREASING FLANGE	CF	154784	CF	Carbon																
4	STATIONARY FLANGE	CF	668830	CF	Carbon																
4	SLAT GASKET	CS	568235	CS	NITROL																
4	SEAL FLANGE	DB	285517	DB	316																
4	SHAFT SLEEVE	DB	380427	DB	316																



- ① Injection 1/2" NPT
- ② Quench 1/2" NPT
- ③ Drain 1/2" NPT

Dimensions between (...) are in mm.

Note: Hexress to be positive



FINAL DRAWING
 No further design changes shall be made by the
 drafter or the design engineer at any time
 or in connection with the design and
 construction of this assembly.

SCALE: 1" = 1" (1:1)

DATE: 1-8-1984

DESIGNED BY: [Signature]

DRIVEN BY: [Signature]

APPROVED BY: [Signature]

BORG-WARNER CORPORATION
 1000 WEST 10TH AVENUE
 DENVER, COLORADO 80202

MECHANICAL SEAL ASSEMBLY
 08 2750

08 2753
 6085006 J.C.
 6174

08 2753
 6085006 J.C.
 6174