



OIL & GAS DEVELOPMENT COMPANY LIMITED
PROCUREMENT DEPARTMENT (LOCAL), ISLAMABAD
SCHEDULE OF REQUIREMENT

79

Material : **GAS SCRUBBER**

Due Date:

Tender Enquiry No: **PROC/LF/PT/17635/19**

Bid Bond Value : RS.450,000/-

EVALUATION WILL BE CARRIED OUT ON FULL

Attachment(if any) : YES

Sr No	Description	Quantity	Make/Brand offered	Unit	Unit Price (PKR) Inclusive Of All Taxes Except GST	Unit Price (PKR) Inclusive of GST	Total Price (PKR) Inclusive of GST	Delivery Period Offered	deviation from Tender Spec. If Any
1	SCRUBBER, GAS FLOW RATE:0.1 MMSCFD, DESIGN PRESSURE 250 PSIG, VERTICAL, SIZE 18" DIAMETER X 6' HEIGHT, WITH ALL ACCESSORIES. DETAILED SPECS ATTACHED AT ANNEX-A.	4		Number					

Special Note: The prospective bidders also download the master set of Tender Document

- The prospective bidders may keep in touch with OGDCL web site for downloading the clarifications/amendments (if any) issued by OGDCL.
- DELIVERY WITHIN 03 MONTHS FROM LPO ISSUE TO NASHPA FIELD, NEAR KARAK, KPK. PAYMENT AFTER DELIVERY WITH PART DELIVERY & PART PAYMENT.

Discount (if any) shall only be entertained on Schedule of Requirement of Bidding Document (Financial Proposal). If the discount is mentioned elsewhere in the bid, the same shall not be entertained.

Vetted
[Signature]



OIL & GAS DEVELOPMENT COMPANY LIMITED
PROCUREMENT DEPARTMENT (LOCAL), ISLAMABAD
SCHEDULE OF REQUIREMENT

249

Mandatory Checklist

Please confirm the compliance of the following mandatory information along with the bid(s) (failing which bids(s) will not be accepted)

Documents	To be Attached with the Technical/Financial Bids	Compliance	
		Yes <input type="checkbox"/>	No <input type="checkbox"/>
Original Bid Bond	Technical Bid	Yes <input type="checkbox"/>	No <input type="checkbox"/>
Copy of NTN Certificate	Technical Bid	Yes <input type="checkbox"/>	No <input type="checkbox"/>
Copy of GST Certificate	Technical Bid	Yes <input type="checkbox"/>	No <input type="checkbox"/>
Confirmation that the Firm is appearing on FBR's Active Taxpayer List	Technical Bid	Yes <input type="checkbox"/>	No <input type="checkbox"/>
Duly signed and stamped Annexure-A (Un-priced)	Technical Bid	Yes <input type="checkbox"/>	No <input type="checkbox"/>
Duly filled, signed and stamped Annexure-B	Technical Bid	Yes <input type="checkbox"/>	No <input type="checkbox"/>
Duly filled, signed and stamped Annexure-D	Technical Bid	Yes <input type="checkbox"/>	No <input type="checkbox"/>
Duly filled, signed and stamped Annexure-L on Company's Letterhead	Technical Bid	Yes <input type="checkbox"/>	No <input type="checkbox"/>
Duly signed and stamped Annexure-M on Company's Letterhead	Technical Bid	Yes <input type="checkbox"/>	No <input type="checkbox"/>
Duly signed and stamped Annexure-N on Non-Judicial Stamp Paper duly attested by Notary Public	Technical Bid	Yes <input type="checkbox"/>	No <input type="checkbox"/>
Duly filled, signed and stamped Annexure-A (Priced)	Financial Bid	Yes <input type="checkbox"/>	No <input type="checkbox"/>
Duly filled, signed and stamped Annexure-C	Financial Bid	Yes <input type="checkbox"/>	No <input type="checkbox"/>
Duly filled, signed and stamped Annexure-E	Financial Bid	Yes <input type="checkbox"/>	No <input type="checkbox"/>



OIL & GAS DEVELOPMENT COMPANY LIMITED
PROCUREMENT DEPARTMENT (LOCAL), ISLAMABAD
SCHEDULE OF REQUIREMENT

3/9

For the Vendors/Contractors who opt to submit Bank Draft/Call Deposit/Pay order against Bid Bond/Performance Bond, our Accounts Department has finalized an arrangement for online payment to such Vendors/Contractors, which will be processed through (IBFT & LFT) for which following information is required:

i.	IBAN No. (International Bank Account Number 24 Digits)	
ii.	Vendor Name as per Title of their Bank Account	
iii.	Contact No.of Company's CEO/ Owner (Mobile & Landline)	
iv.	Bank Name.	
v.	Bank Branch Name and Code	

Name, Sign and Stamp of the authorized official of the Bidder(s) _____

4/9

ANNEXURE-A

SCHEDULE OF REQUIREMENT

Description:

Gas Scrubber comprises of Skid mounted Instrument Gas Dryer with associated filters & accessories for processing instrument gas required for wellhead instrumentation. Unit shall be provided with filters & two pressure indicators (one on upstream and one on downstream). Detail & figure of the Gas Scrubber is attached. Gas scrubber will consist of the following items with quantity as mentioned in the attached diagram:-

- 1) Complete vessel with filters & strainers, **Qty: 01**
- 2) Needle valves, Qty as per diagram
- 3) Ball valves, Qty as per diagram
- 4) Pressure gauges, **Qty: 04** (Distribution: 01 before anti-freeze regulator, 01 after anti-freeze regulator, 01 after PR1, 01 at gas input before vessel, 01 on the vessel)
- 5) Union, **Qty: 06** (Distribution: 01 on gas input line, 02 on level gauge glass, 03 on the downstream of drain valves)
- 6) Flanged connections as per diagram
- 7) Auto drain valve, **Qty: 01**
- 8) Level glass gauge, **Qty: 01**
- 9) Pressure safety valve, Set on 225 psig, **Qty: 01**
- 10) Input & Outlet lines (1 inch size with schedule 80) as per diagram
- 11) Anti-freeze pressure reducing regulator, **Qty: 01**
- 12) Pressure reducing regulator, **Qty: 01**

Gas Scrubber Quantity Requirement Detail

Sr. #	Application	Qty	Description
1	Gas Well with light mixture of Water & condensate	04 Nos.	Gas Scrubber

Operating Requirements

Gas Flow Rate:	0.1 MMSCFD
Operation:	200 Psig and 120° F
Inlet size:	1" inlet pipe
Outlet size:	1" gas outlet

Specifications of Gas Scrubber

General

Type:	Vertical
Size:	18" Diameter x 6'-0" Height x 9.5 mm thickness
Gas Flow Rate:	0.1 MMSCFD
Operating Pressure:	200 PSIG
Operating Temperature:	120 °F
Design Pressure:	250 PSIG (150# flanged)
Design Temperature:	150 °F

Vessel Feature

Design Code:	ASME SEC. VIII DIV.1 Latest Revision
Radiography:	As per code
Orientation:	Vertical
Joint Efficiency:	100%
Filter / Strainer:	Basket strainer/filter for removal of particles sizes 10 micron and larger.
Externals (Provided):	Lifting Lugs, Name Plates & Brackets
Painting (External):	Two Coats (Blue Color) after sandblast.
Support Type:	Legs

Demister Pad

Type:	Wire Mesh
Wire material:	Stainless Steel
Thickness:	75 – 100 mm
Design Pressure:	250 psi
Efficiency:	99.0% for 10 particle size & larger

Pressure Safety Valve (PSV)

Type:	Proportional lift, spring loaded
Material	Stem, housing & spring : Stainless Steel
Set Pressure:	225 psi

6/9

Pressure Indicators (P1, P2, P3, P4)

Dial Size:	P1= 4 inch, P2 / P3 / P4 = 2.5 inch
Pressure range:	P1= 300 psig, P2 = 500 psig, P3 = 1,000 psig, P4 = 2,000 psig
Material	316 stainless steel wetted parts. 304 Stainless steel case and bayonet ring.
Liquid filled:	Yes
Accuracy:	1% of span
Process Connection	NPT threaded lower mount

Auto Drain Valve

Function:	Allows automatic drain discharge without electric power
Proof pressure:	2.5 MPa
Max. operating pressure:	1.6 MPa
Operating pressure range:	0.5 to 1.6 MPa
Max. drain discharge:	2 Litre/min

Needle Valves (N1, N2, N3)

Material:	Body, Stem & Packing ring: Stainless Steel 316
Handle:	Standard, Round
Pressure Rating:	N1 = 2,000 psi, N2 = 1,000 psi, N3 = 500 psi
Inlet & Outlet Dia:	Vendor recommended, threaded

3-Piece Ball Valve (B1)

Type:	Full Port, bubble-tight shut-off
Material:	Body: Carbon Steel Ball & Stem: Stainless Steel
Pressure Rating:	Class 150 / 300 psi
Inlet Dia:	1 inch
Outlet Dia:	1 inch
Connection:	Threaded end connections
Control	Locking Lever handle

Flanged End Ball Valve (B2)

Type:	Full Bore
Material:	Body: Stainless Steel Ball & Stem: Stainless Steel
Pressure Rating:	Class 150 / 300 psi
Inlet Dia:	1 inch
Outlet Dia:	1 inch
Connection:	Flanged end connections
Control	Locking handle or manual gear operator

Two-Piece Ball Valve (B3)

Type:	Full Port, bubble-tight shut-off
Material:	Body: Stainless Steel Ball & Stem: Stainless Steel
Pressure Rating:	Class 150 / 300 psi
Inlet / Outlet Dia:	1 inch
Connection:	Threaded end connections
Control	Locking Lever handle

Anti-Freeze Pressure Reducing Regulator R1

Material:	Body: Brass body
Inlet Pressure:	900-1800 Psig
Outlet Pressure:	500-800 Psig
Inlet & Outlet Dia:	Vendor recommended
Make:	Fisher Model: 1305D or equivalent

Pressure Reducing Regulator PR1

Type:	Direct-operated, Pressure reducing regulator
Material:	Body: Brass body
Inlet Pressure:	500 - 800 Psig
Outlet Pressure:	Adjustable 100-200 Psig
Inlet & Outlet Dia:	Vendor recommended

Special Features

1. Scrubber shall be mounted on a base, with 1" inlet pipe and 1" gas outlet as well as 1" Liquid drainage. Liquid drainage shall be through an auto drain valve.
2. Scrubber shall come equipped with a filter for fine filtration of the gas for supply to pneumatic instruments.
3. Welding shall comply with ASME IX.
4. All sharp edges shall be rounded up for $R=0.125''$

Delivery Packing

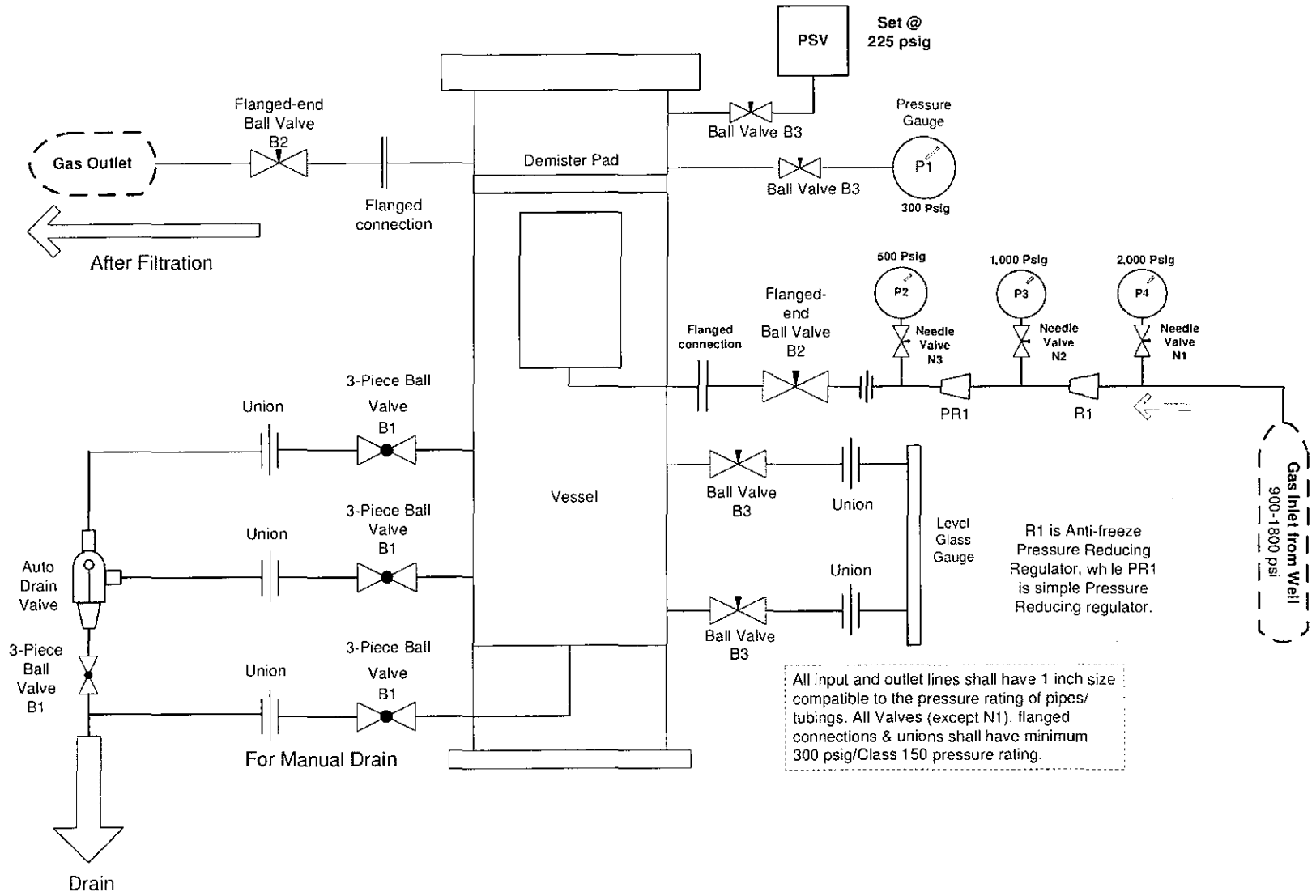
Supplier shall deliver the scrubbers in wooden frame box for safe delivery at OGDCL Site.

Special Note:-

Bidders to provide complete details i.e make, model, ordering code & detailed specifications of Pressure Indicators, needle valve, ball valve, pressure safety valve, Auto Drain Valve, Anti-freeze regulator & pressure reducing regulator in their bids. Failing to comply will lead to rejection of the bid.

Size: 18 inch Dia x 6 Feet height x 9.5 mm thickness
Design Pressure: 250 psig
Operating Pressure: 200 psig
Code: ASME Section VIII, Div.1

Instrument Gas Scrubber



9/9