

OIL & GAS DEVELOPMENT COMPANY LIMITED
PROCUREMENT DEPARTMENT, ISLAMABAD
FOREIGN SECTION A

(To be completed, filled in, signed
and stamped by the principal)

ANNEXURE 'A'

Material SPARES FOR LUBE OIL PUMPS OF NEW REFRIGERATION PACKAGE
Tender Enquiry No PROC-FA/CB/P&P/DKN-4892/2020
Due Date
Evaluation Criteria FULL

SCHEDULE OF REQUIREMENT

Sr No	Description	Unit	Quantity	Unit Price (FOB)	Total Price (FOB)	Unit Price C & F BY SEA	Total Price C & F BY SEA	Deviated From Tender Spec. If Any
1	Casing & Bushing Assembly P 3-213-81L-380-00 Pump Model # KKE4076, Drawing # A5245-1900. POS#17 or Equivalent as per TOR Attached	Number	1					
2	Idler & Bushing Assembly P 3-420-401-080-54 , Pump Model # KKE4076, Drawing # A5245-1900. POS#27 or Equivalent as per TOR	Number	1					
3	Idler Pin P 2-435-062-291-00 Pump Model # KKE4076, Drawing # A5245- 1900. POS#30 or Equivalent as per TOR	Number	1					
4	Mechanical Seal (balanced Viton type) complete P 2-478-229-999-00 Pump Model # KKE4076, Drawing # A5245-1900. POS#16 or Equivalent as per TOR	Number	2					
5	Rotor & Shaft Assembly P 3-570-55N-309-24 Pump Model # KKE4076, Drawing # A5245-1900. POS#26 or Equivalent as per TOR	Number	1					

Note:

1. Bid Bond Amount: USD 500/= (United States Dollar Five Hundred only) or equivalent Pak Rupees
2. Evaluation Criteria: - Full Consignment wise C&F By Sea
3. Delivery Period: 120 days from establishment of LC
4. Bid Validity: 120 Days
5. Bidders are advised to carefully read all the terms and conditions of the Tender Document available on OGDCL website which is an integral part of this Schedule of Requirement


M. AHSAN WAQAR KHAN
Jr. Engr. (Mech.) P&P-NB
Ext: 2684

Terms of References

OGDCL Intends to Procure the Spare Parts for Lube Oil Pump for

Pump Model # KKE4076

Drawing # A5245-1900

Make: Viking Pumps

1. Original Authority Letter for participation in the bid from Pumps Manufacturer must be provided with technical bid otherwise bid will be rejected.
2. In case of local representative, Original Authorization Letter from principle/ LC Beneficiary to participate in the bid should be provided with the technical bid.
3. Bidder must confirm that quoted spare parts are 100% fit in size and function/metallurgy for the Viking Pumps models mentioned by OGDCL. The spare parts to be provided from OEM.
4. Bidders quoting Equivalent parts must provide a Certificate from at least three E&P companies of foreign jurisdiction other than bidders/manufacturers own country, stating that equivalent (quoted parts) are used by them and performance of such parts is found satisfactory. Copies of Purchase Orders (unpriced) must also be provided. The certificate(s) / sale record is mandatory and due to non-submission thereof, the bid will be rejected.
5. If bidder found any ambiguity in part nos., it should be cleared prior to bid opening date (Reference Drawing is attached).
6. Parts must be in original OEM Packing.
7. Parts must be new & free from any defect.
8. If bidder found any change/update/superseded part nos., it should be incorporated in bid with OEM confirmation.
9. Parts must have standard OEM warranty/guarantee.
10. Delivery period is 120 days from date of issuance of L/C.

LC Beneficiary

Signed and Seal Stamped TOR

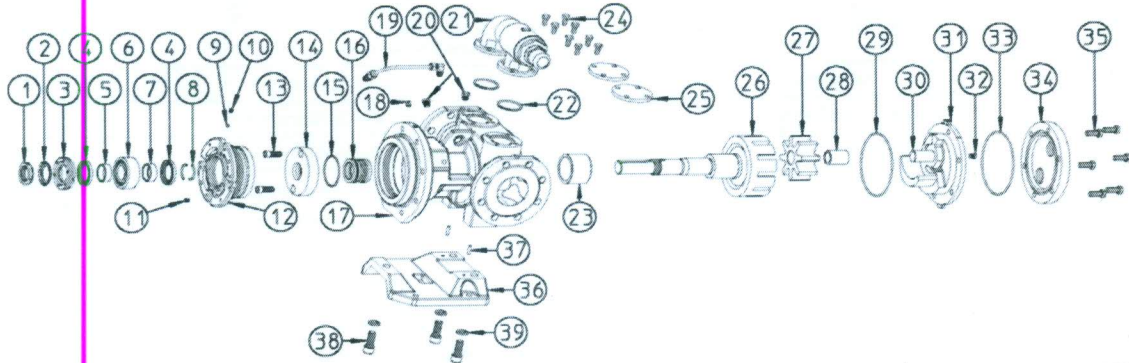

KHAN
IB

11. Bidder must provide the Company profiles & previous supply record (reference list) of LC Beneficiary.
12. Bidder must confirm country of origin in technical bid.
13. Bidder should submit the complete compliance of TOR duly signed and stamped.

Sr #	Description	Req QTY	UOM	Country of Origin
1.	Casing & Bushing Assembly P 3-213-81L-380-00 Pump Model # KKE4076, Drawing # A5245-1900. Pos# 17 or Equivalent	1	Number	
2.	Idler & Bushing Assembly P 3-420-401-080-54 , Pump Model # KKE4076, Drawing # A5245-1900. Pos#27 or Equivalent	1	Number	
3.	Idler Pin P 2-435-062-291-00 Pump Model # KKE4076, Drawing # A5245-1900. Pos#30 or Equivalent	1	Number	
4.	Mechanical Seal (balanced Viton type) complete P 2-478-229-999-00 Pump Model # KKE4076, Drawing # A5245-1900. Pos#16 or Equivalent	2	Number	
5.	Rotor & Shaft Assembly P 3-570-55N-309-24 Pump Model # KKE4076, Drawing # A5245-1900. Pos#26 or Equivalent	1	Number	

VIKING PUMP

Section **R710.5**
 Viking Effective Date 11/09/11
 Distributor Print Date
MODEL KKE4076
KKE4176



ITEM	PART NO.	DESCRIPTION	MATERIAL	PRICE
1		Locknut	Steel	
2		Lockwasher	Steel	
3		End Cap	Iron	
4		Lip Seal (2 Req'd)	Buna-N	
5		Bearing Spacer Collar (Outer)	Steel	
6		Ball Bearing	Steel	
7		Bearing Spacer Collar (Inner)	Steel	
8		Ring, Half Round (2 Req'd)	Steel	
9		Nylon Slug (2 Req'd)	Nylon	
10		Setscrew, M8-1.25 x 8 mm (2 Req'd)	Steel	
11		Setscrew, M10-1.5 x 14 mm (2 Req'd)	Steel	
12		Bearing Housing	Iron	
13		Capscrews for Seal Plate (2 Req'd)	Steel	
14		Mechanical Seal Plate	Steel	
		Seal Plate; pin type for viscosities over 750 cSt. (3,500 SSU)	Steel	
15		O-Ring for Seal Plate	Buna-N	
			Viton®	
16		Mechanical Seal	Buna-N/Silicon vs Carbon	
			Viton®/Silicon vs Carbon	
		Mechanical Seal; pin type for viscosities over 750 cSt. (3,500 SSU)	Buna-N/Silicon vs Carbon	
			Viton®/Silicon vs Carbon	
17		Casing and Bushing Assembly	Ductile Iron/Carbon Graphite	
18		Grease Fitting 1/8" NPT	Steel	
19		Suckback Line Assembly	Steel	
20		Pipe Plug 1/4" BSP Hex Head (2 Req)	Steel	
21		Relief Valve	Ductile Iron	

415

VIKING PUMP

Section **R710.5**
 Viking Effective Date 11/09/11
 Distributor Print Date
MODEL KKE4076
KKE4176

22	† O-Ring Gaskets for Relief Valve / Cover Plates (2 Req'd)	Buna-N Viton®	
23	Bushing (Casing)	Carbon Graphite	
24	Capscrew for Relief Valve/ Cover Plates (8 Req'd)	Steel	
25	Cover Plates (2 Req'd)	Ductile Iron	
*26	Rotor and Shaft Assembly	Ductile Iron/Hardened Steel	
27	Idler and Bushing Assembly	Iron/CarbonGraphite	
28	Bushing (Idler)	Carbon Graphite	
29	O-Ring for Head	Buna-N	
	O-Ring for Head, Jacketed	Viton®	
30	Pin, Lube	Hardened Steel	
31	Head and Lube Idler Pin, CW	Ductile Iron/Hardened Steel	
	Head (To Accept Jacket Head Plate) and Lube Idler Pin, CW	Ductile Iron/Hardened Steel	
	Head and Lube Idler Pin, CCW	Ductile Iron/Hardened Steel	
	Head (To Accept Jacket Head Plate) and Lube Idler Pin, CCW	Ductile Iron/Hardened Steel	
32	Pipe Plug 1/4" B□ Square Head	Steel	
33	O-Ring for Jacket Head Plate	Aflas®	
34	Jacketed Head Plate	Ductile Iron	
35	Capscrews, Head	Steel	
	Capscrews, Head (Jacketed)	Steel	
36	(1) Foot	Ductile Iron	
37	(1) Self Locking Pin (2 Req'd)	Steel	
38	(1) Capscrew M16-2 -1.75 X 40mm (3 Req'd)	Steel - Grade 5	
39	(1) Lock Washer (3 Req'd)	Steel	
1 - 12	Bearing Housing Kit (Complete)	Standard	
36 - 39	(1) Foot Assembly (Complete)	Ductile Iron	