

Schedule of Requirement

ANNEXURE-A

Description and Quantity Requirements:

Sr.#	Description	Rate	Qty. Required	Total Rate (Inclusive all Taxes)	Remarks
01	<p><b>Changeover (see attached fig.1)</b> Panel Board: 14 SWG Size:(1800x800x600) mm (Outdoor/Floor/Canopy/including Stand 800mm) Containing;</p> <ul style="list-style-type: none"><li>a) Incoming: 1 Change Over Switch 1250A FP,</li><li>b) Indication Light (R/Y/B),</li><li>c) Control Fuse 2A with Base (R/Y/B)</li><li>d) Bus Bar</li><li>e) Insulator etc.</li></ul>		01 No		
02	<p><b>Motor Control Center (MCC) (see attached fig. 2)</b> Panel Board: 14 SWG Panel. Panel Size (2100(700+800)700) mm. (Indoor/Floor mounted). incoming, outgoing and DOL starters detail is given below;</p> <p><b>INCOMING</b> ACB 800A TP 65KA (01 No) including Volt Meter (0~500) Digital Volt S/Switch, AMP Meter (800/5A) (Digital) AMP S/Switch, C.T 800/5A, Indication Light (R/Y/B), Control Fuse 2A with Base (R/Y/B)</p> <p><b>OUT GOING Distribution Breakers</b> MCCB 30A TP 15KA=17 Nos MCCB 60A TP 15KA=01 No MCCB 250A TP 25KA=01 No</p> <p><b>10 KW DOL Starter (For KO pump A, B) = 02 No</b> MCCB 60A TP 15KA, magnetic Contactor TP Over Load Relay (16 ~ 24A), H-O-A Switch push Button (On/Off), Indication Light (On/Off/Trip), Control Fuse 2A with Base Control Terminal Block 2.5mm, Power Terminal Block 6mm complete DOL circuit</p> <p><b>15 KW DOL Starter (For Fan A, B, C) = 03 No</b> MCCB 60A TP 15KA, magnetic Contactor TP Over Load Relay (23 ~ 32A), H-O-A Switch</p>		01 No		

	<p>32A), H-O-A Switch push Button (On/Off), Indication Light (On/Off/Trip), Control Fuse 2A with Base Control Terminal Block 2.5mm, Power Terminal Block 10mm complete DOL circuit</p> <p><b>25 KW DOL Starter (For Fire water pump A, B) =02 No</b> MCCB 100 TP 15KA, Magnetic Contactor TP, Over Load Relay (37 ~ 50A), H-O-A Switch, push Button (On/Off), Indication Light (On/Off/Trip), Control Fuse 2A with Base Control Terminal Block 2.5mm, Power Terminal Block 50mm, bus bar and insulator. complete DOL circuit.</p>				
03	<p><b>Electric Distribution panel</b> Panel Board :14 SWG Panel Size:(1300x600x250) mm (Outdoor/Floor/Canopy/including Stand 600mm)</p> <p><b>INCOMING:</b> MCCB 150A TP 15KA =01 No., <b>OUTGOING:</b> MCCB 60A TP 15KA =01 No. Control Fuses 2A with Base Magnetic Contactor TP (LC1-D50A) =01 No Photo Cell with complete wiring and necessary accessories for lighting system. MCB 32A SP 6KA =06 Nos. Schneider Bus Bar &amp; Insulator MCB 10A SP 6KA =12N0s. Bus Bar &amp; Insulator.</p>		03 Nos		
<b>Total</b>					

## **Terms and Conditions:**

1. Manufacturer must have more than 10 years of manufacturing of such type of material.
2. Material must be supplied with standard guarantee / warranty.
3. Standard test certificate for all material must be provided at the time of delivery where applicable.
4. Bids to be submitted on Single Envelope basis.
5. Evaluation criteria of the bids shall be "full consignment wise". (Technical & Financial evaluation shall be carried out on the complete scope of supply).
6. Material to be delivered at Nashpa Oil Field. The delivery charges are in the scope of supplier/ bidder.
7. Any required technical clarification/details regarding the cable to be supplied must be cleared before submission of bid. No change in submitted bid will be entertained after bid submission date.
8. The consignment will be accepted after final inspection at site, and payment will be made as per OGDCL standard procedures.
9. The firm must have valid NTN and GST number and have active status on FBR website.
10. The Firm should have active Professional tax certificate of concerned Excise office where operating business.
11. Tax submission Certificate (Annex-C) will be provided along with Invoice.

# CHANGEROVER DRAWING

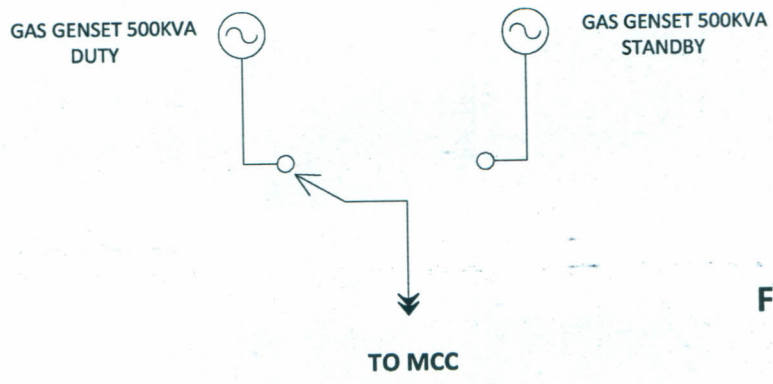


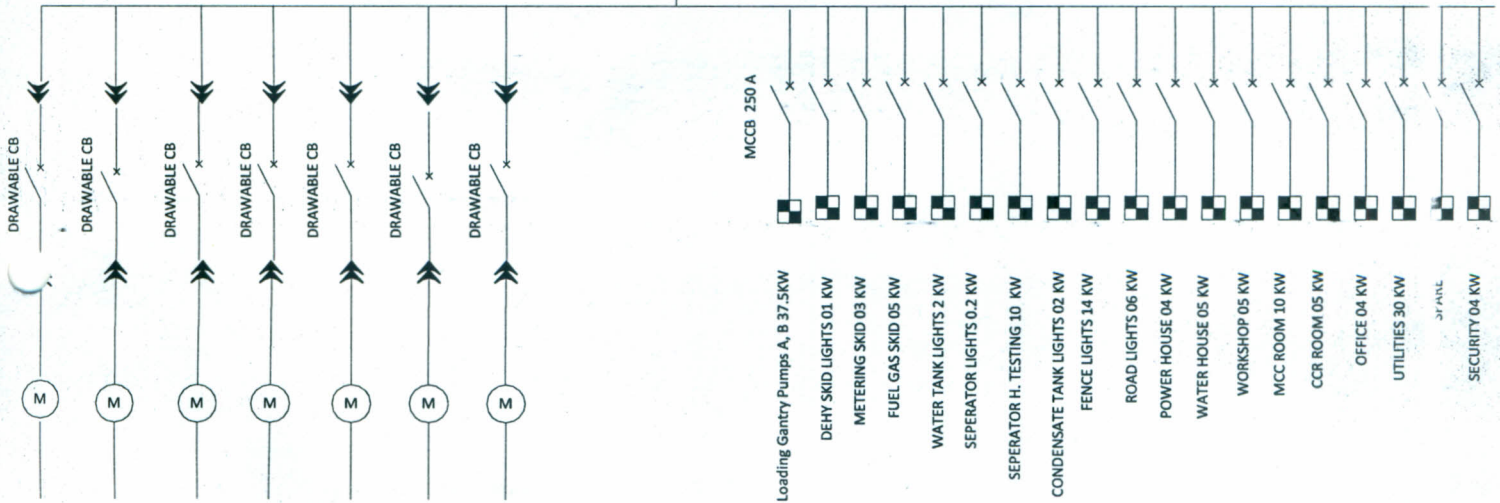
Fig. 1

# MCC DRAWING

FROM CHANGOVER

Main ACB 800A  
TP 65KA

Outgoing Distribution Breakers



CONDENSER FAN A	CONDENSER FAN B	CONDENSER FAN C	KO PUMP MOTOR A	KO PUMP MOTOR B	FIRE WATER PUMP MOTOR A	FIRE WATER PUMP MOTOR B
15KW	15KW	15KW	10KW	10KW	25KW	25KW

Loading Gantry Pumps A, B 37.5KW	DEHY SKID LIGHTS 01 KW	METERING SKID 03 KW	FUEL GAS SKID 05 KW	WATER TANK LIGHTS 2 KW	SEPERATOR LIGHTS 0.2 KW	SEPERATOR H. TESTING 10 KW	CONDENSATE TANK LIGHTS 02 KW	FENCE LIGHTS 14 KW	ROAD LIGHTS 06 KW	POWER HOUSE 04 KW	WATER HOUSE 05 KW	WORKSHOP 05 KW	MCC ROOM 10 KW	CCR ROOM 05 KW	OFFICE 04 KW	UTILITIES 30 KW	SECURITY 04 KW
----------------------------------	------------------------	---------------------	---------------------	------------------------	-------------------------	----------------------------	------------------------------	--------------------	-------------------	-------------------	-------------------	----------------	----------------	----------------	--------------	-----------------	----------------

Fig. 2

# MAIN SINGLE LINE DIAGRAM OF CHANGEROVER & MCC

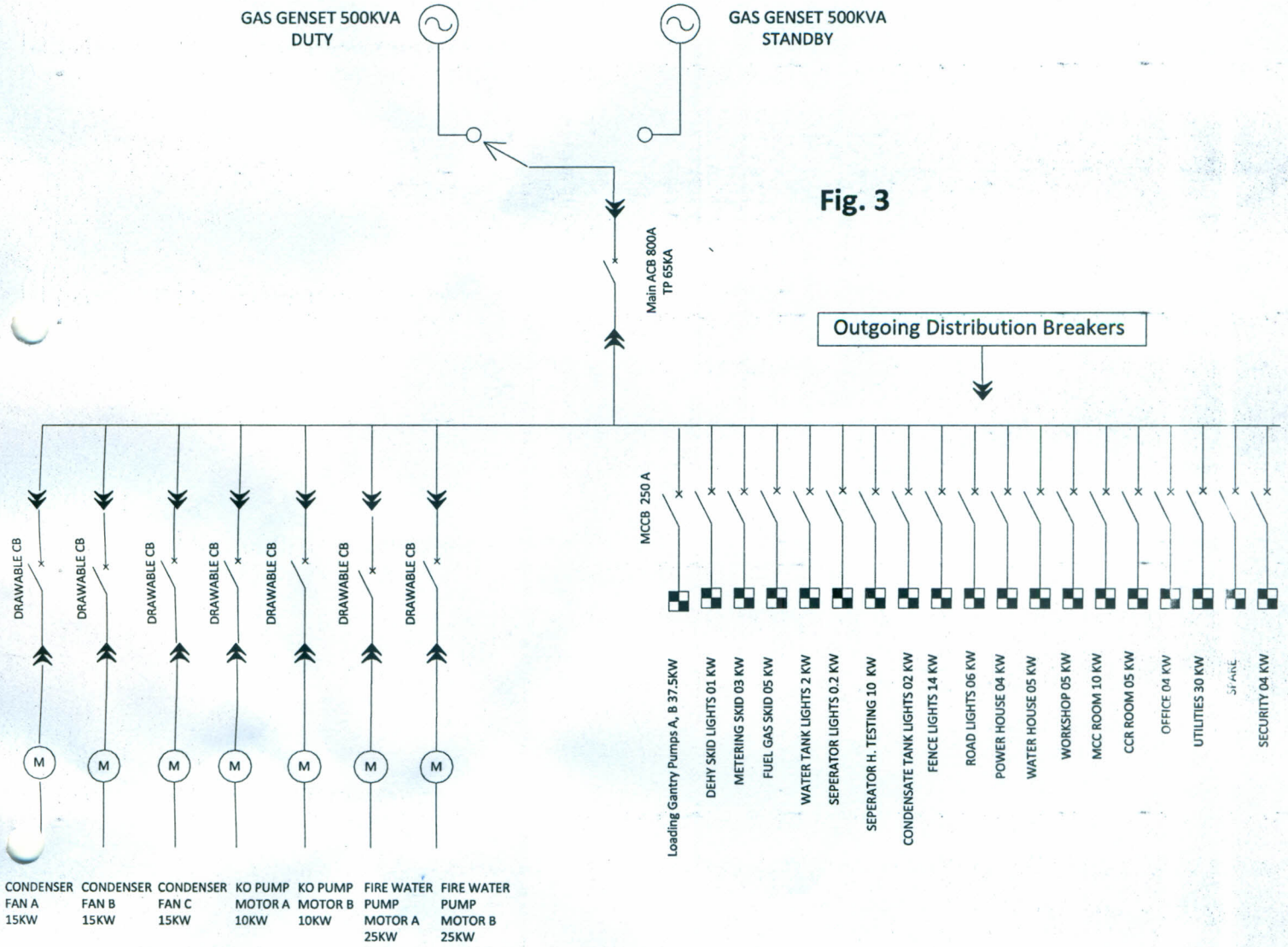


Fig. 3

Outgoing Distribution Breakers