



**OIL AND GAS DEVELOPMENT COMPANY LIMITED
NASHPA OIL & GAS FIELD**

Date: 28-12-2021

SCHEDULE OF REQUIREMENT

TENDER ENQUIRY # TE/NOF/M/12/2021

Procurement of Refurbishment Kits for Glycol Pumps of Old Dehydration Plant (Pump Model: 45015 PV , Make : Kimray)

| S# | Description | Reference # | Rate | Total rate (inclusive of all Taxes) | Deviation |
|-----------|----------------------|--------------------|-------------|--|------------------|
| 1 | As per attached list | | | | |

| Sr No | Description | Part Number | Qty |
|---|-------------|-------------|-----|
| Pump Model: 45015 PV , Make : Kimray | | | |
| 1 | Cylinder | 2532 | 04 |
| 2 | Repair Kit | RJL1-V | 06 |

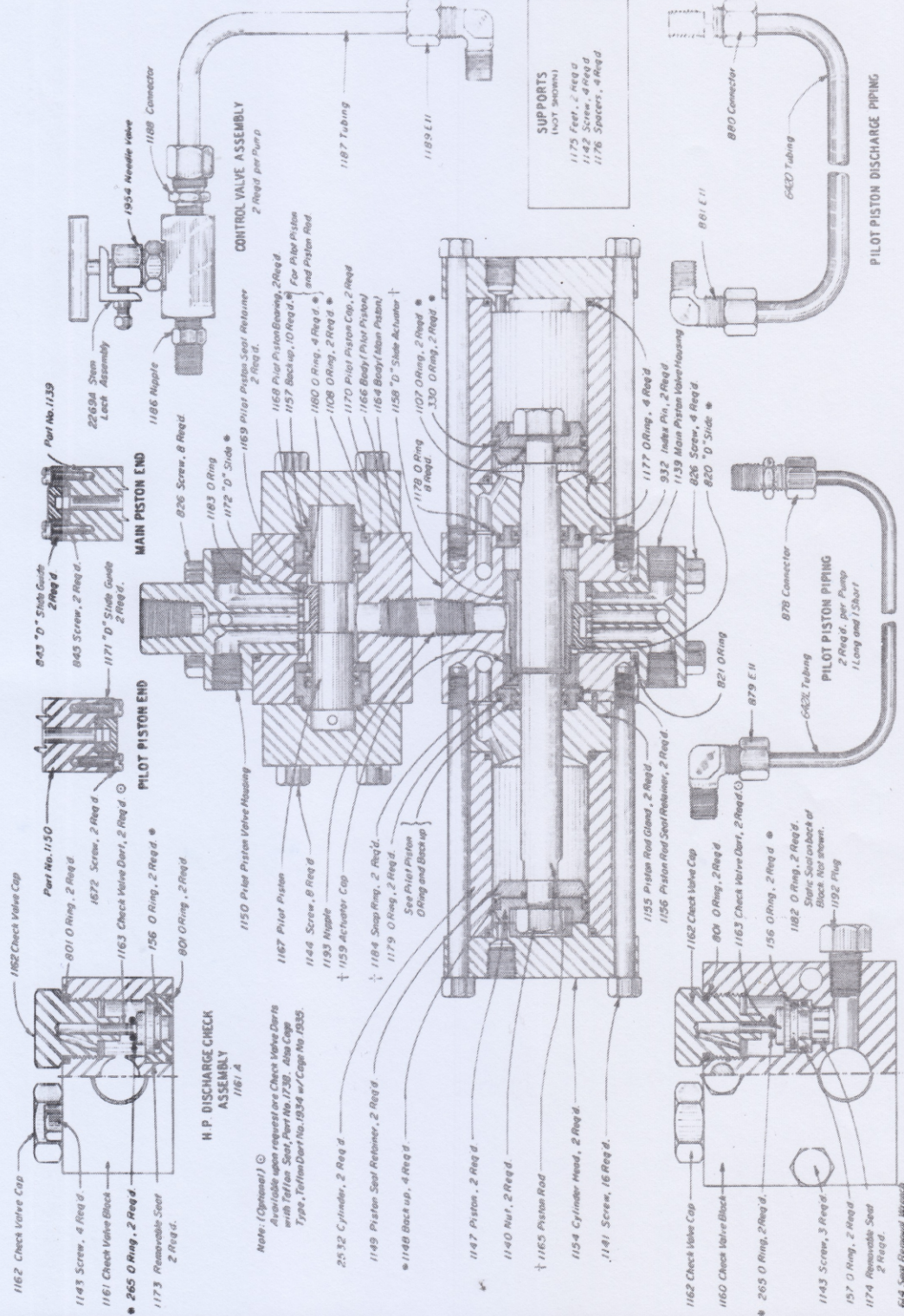
TERMS AND CONDITIONS:

1. Single Stage single Envelope.
2. Only OEM manufactured parts to be quoted.
3. Both Technical and Financial evaluation will be made on complete Scope of Supply
4. The material will be delivered at Nashpa Oil Field. The delivery charges to Nashpa Oil Field to be borne by the supplier/ bidder.
5. OGDCL reserves the rights to cancel the tender at any stage before placement of firm Purchase Order.
6. The material must be supplied within 10 weeks from the date of issuance of Purchase order.
7. Certificate of Origin to be provided.
8. Any required technical clarification/detail regarding material to be supplied must be cleared before submission of bid. No change in submitted bid will be entertained after bid submission date.
9. Material will be accepted after final inspection at site, and payment will be made through Cross cheque thereof.
10. The firm should have valid NTN and GST number and have active status on FBR website. Documents to be attached with tender document.
11. The Firm should have active Professional tax certificate of concerned Excise office where operating business and same to be submitted along with the bid.
12. Tax submission Certificate (Annex-C, submitted status) should be provided along with Invoice.
13. Supplier should have 05 year of prior experience for supply of material to Oil and Gas industry. List of POs and company profile to be attached along with Bid.



GLYCOL PUMPS

MODEL 45015 PV PUMP
STEEL



† Parts 1159, 1155, 1165 and 1184 available as complete assembly only. Specify No. 1165A Assembly.
⊕ 65015 PV Repair Kit contains parts 116, 240, 330, 860, 1007, 1108, 1148, 1157, 1172, 1180.
RECOMMENDED SPARE PARTS ARE CONTAINED IN REPAIR KIT AS LISTED ABOVE.

PUMPS AVAILABLE:

| CAT. NO. | TYPE | OPER. PRESS. MINIMUM | OPER. PRESS. MAXIMUM | REPAIR KIT |
|----------|----------|----------------------|----------------------|------------|
| GAJ | 45015 PV | 300 | 1500 | RJL1 |

NOTES:

Current Revision:
Change Quantity of Back-up 1148

Configuration of Glycol pump is a trademark of Kimray, Inc.
www.kimray.com

G:10.23
Issued 12/09