

Schedule of Requirement

ANNEXURE-A

Description and Quantity Requirements:

Sr.#	Description	Rate	Qty. Required	Total Rate (Inclusive all Taxes)	Remarks
01	<p><u>MAIN PANEL (see fig.1)</u> Panel Board 14 SWG Panel Size(1900(700+900)600)mm (Outdoor/Floor/Canopy) INCOMING MCCB 600A FP = 01 No Indication Light (R/Y/B) = 09 Nos Control Fuse 2A with Base (R/Y/B) = 09 Nos OUT GOING MCCB 400A FP 50KA (NSX400N) = 05 Nos Bus Bar & Insulator, as required</p>		01 No		
02	<p><u>DISTRIBUTION PANEL (see fig. 2)</u> Panel Board 14 SWG Panel Size(1600(600+600)450)mm (Outdoor/Floor/Canopy/Front Glass) INCOMING MCCB 400A FP 50KA (NSX400N) = 01 No. Volt Meter (0~500) (Digital) = 01 No Volt S/Switch = 01 No AMP Meter (400/5A) (Digital) = 01 No AMP S/Switch = 01 No C.T 400/5A = 03 Nos Indication Light (R/Y/B) = 03 Nos Control Fuse 2A with Base (R/Y/B) = 03 Nos OUT GOING DISTRIBUTION BREAKERS MCCB 100A TP 15KA (Ezc100N) = 05 Nos MCB 63A TP 10KA (ic60N) = 03 Nos MCB 10A SP 6KA (Domae) = 02 Nos MCB 16A SP 6KA (Domae) = 02 Nos MCB 20A SP 6KA (Domae) = 02 Nos OUT GOING LIGHTS CIRCUIT MCCB 100A TP 15KA (Ezc100N) = 01 No Control Fuse 2A with Base (R) = 01 No Magnetic Contactor (LC1 - D95) = 01 No Timer (TB6210) 24 Hours = 01 No Photo Cell = 01 No H-O-A Switch TP = 01 No Push Button (On/Off) = 02 Nos Indication Light (On/Off) = 02 Nos Bus Bar & Insulator, as requirement</p>		01 No		

<p>03</p>	<p>SUB-DISTRIBUTION PANEL Panel Board 14 SWG Panel Size 800mm x 600mm x 300mm</p> <p>(Outdoor/Floor/Canopy) INCOMING MCCB FP 200A, 18KA = 01 No Indication Light (R/Y/B) = 03 Nos</p> <p>OUT GOING DISTRIBUTION BREAKERS MCCB 60 A TP 15KA = 02 Nos MCB 63A TP 6KA (Domae) = 03 Nos MCB 32A TP 6KA (Domae) = 03 Nos MCB 10A SP 6KA (Domae) = 06 Nos MCB 16A SP 6KA (Domae) = 06 Nos MCB 20A SP 6KA (Domae) = 06 Nos</p>		<p>02 Nos</p>		
<p>04</p>	<p>15 KW DOL Starter (For Loading Pumps) MCCB 60A TP 15KA ,magnetic Contactor TP Over Load Relay (23 ~ 32A) ,H-O-A Switch push Button (On/Off),Indication Light (On/Off/Trip),Control Fuse 2A with Base Control Terminal Block 2.5mm,Power Terminal Block 10mm complete DOL circuit</p>		<p>02 Nos</p>		

Terms and Conditions for Tender

1. Bids to be submitted on Single Envelope basis.
2. Evaluation criteria of the bids shall be "full consignment wise". (Technical & Financial evaluation shall be carried out on the complete scope of supply).
3. The parts to be delivered at Nashpa Oil Field. The delivery charges are in the scope of supplier/ bidder.
4. Any required technical clarification/details regarding the material to be supplied must be cleared before submission of bid. No change in submitted bid will be entertained after bid submission date.
5. The consignment will be accepted after final inspection at site, and payment will be made through Cross Cheque after inspection of material.
6. The firm should have valid NTN and GST number and have active status on FBR website.
7. The Firm should have active Professional tax certificate of concerned Excise office where operating business.
8. Tax submission Certificate (Annex-C) will be provided along with Invoice.
9. The spares to be supplied must be in original OEM packaging with standard warranty.
10. Circuit breakers of Make Schneider, Siemen, ABB or equivalent will be accepted.

Relevant Drawing

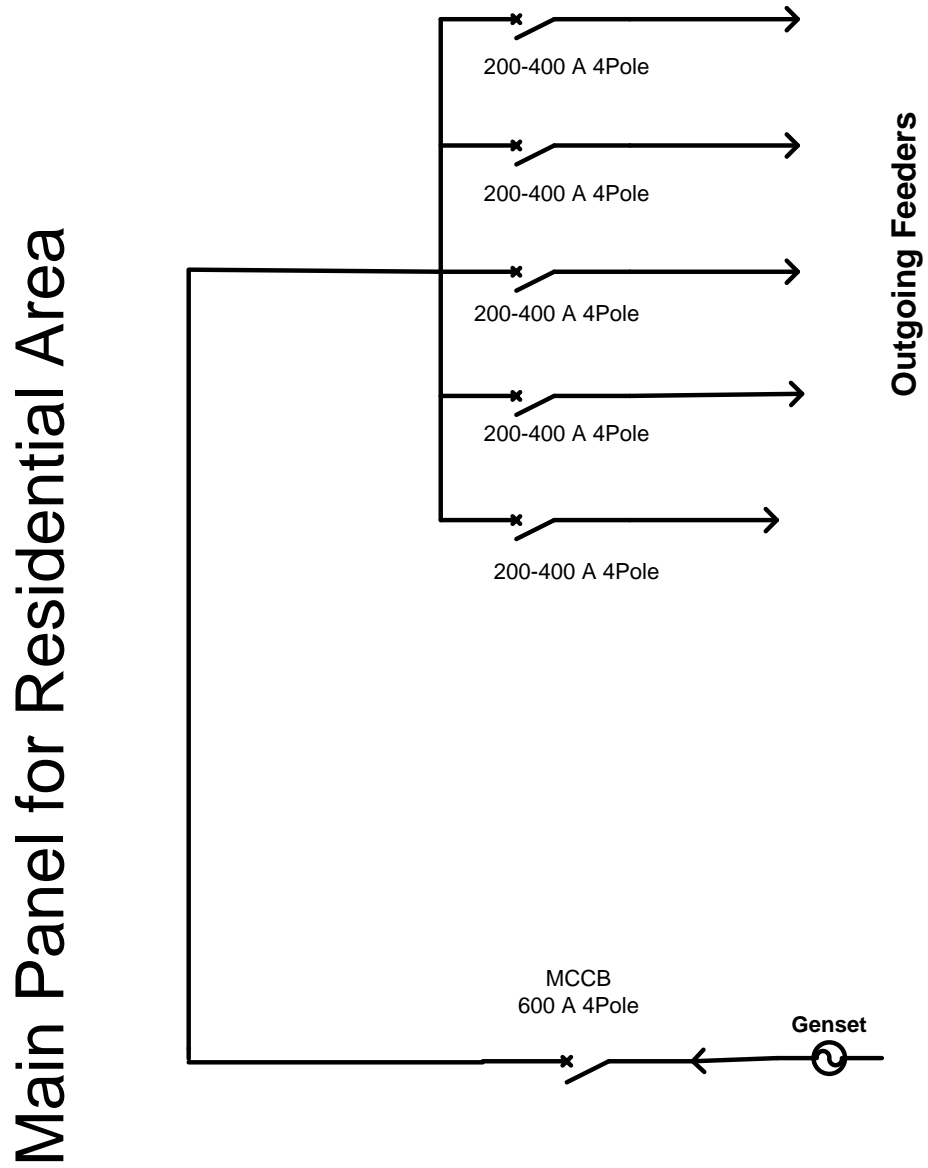


Figure 1

Distribution Panel

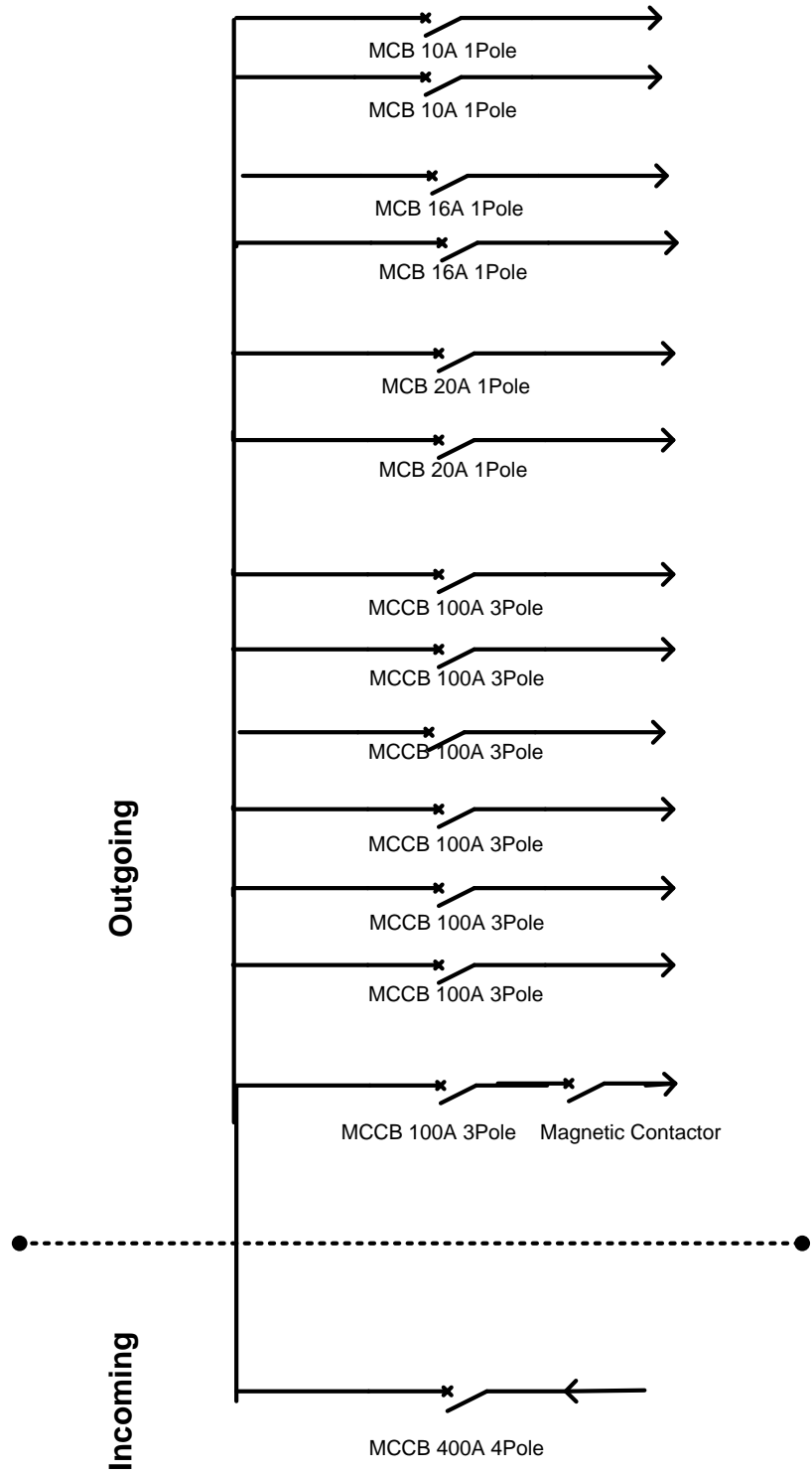


Figure 2