



**OIL AND GAS DEVELOPMENT COMPANY LIMITED
NASHPA OIL & GAS FIELD**

SCHEDULE OF REQUIREMENT

TENDER ENQUIRY # TE/NOF/M/08/2022

Procurement of Heat Exchanger Gaskets.

S#	Description	Reference #	Rate	Total rate (inclusive of all Taxes)	Deviation
1	As per attached list				

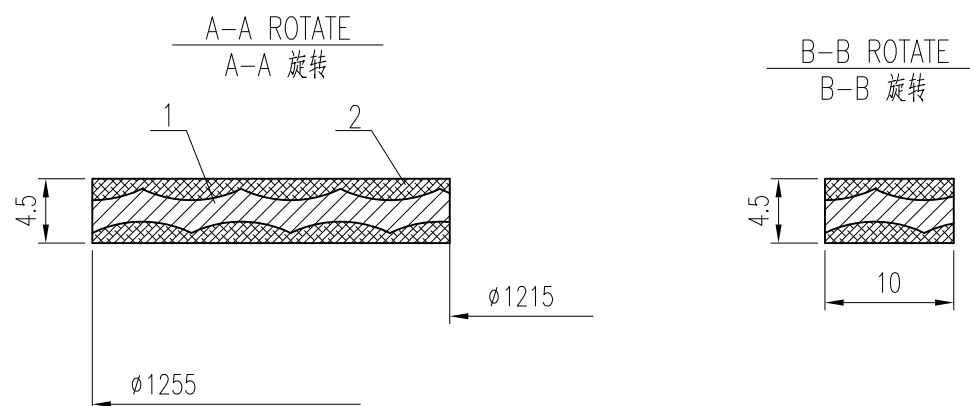
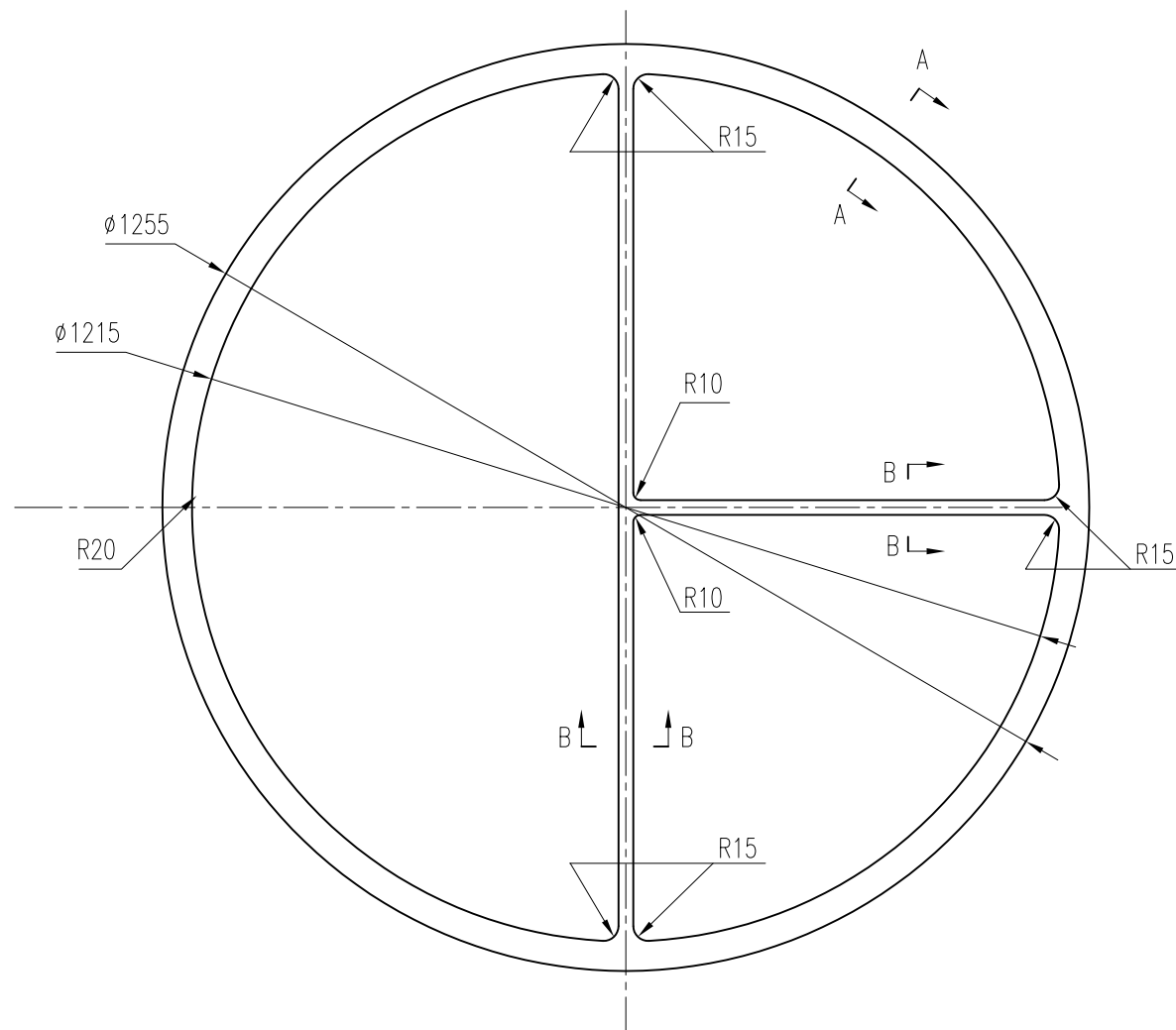
Heat Exchanger Gaskets for LPG Plant NOF

Sr.No	Equipment Description	Gasket Dwg / Details	Type of Gasket (Flexitallic Style)	Qty	Remarks
1	Stabiliser Reboiler (E-2201)	U-16-11-04-00	J123	3	Note: Reduce OD from 1255mm to 1253mm.
2	Stabiliser Reboiler (E-2201)	U-16-11-05-00	E2	3	Note: Reduce OD from 1255mm to 1253mm.
3	Condensate Heat Exchanger (E-2202)	U-16-12-2-00	Flexpro Kamprofile or equivalent brand PN SS304 Core 3mm with 0.75 Graphite Layers on both sides. Total 4.5mm	3	Note: Reduce OD from 965mm to 963.5mm.
4	Condensate Heat Exchanger (E-2202)	U-16-12-3-00	Flexpro Kamprofile or equivalent brand PN SS304 Core 3mm with 0.75 Graphite Layers on both sides. Total 4.5mm	3	Note: Reduce OD from 965mm to 963.5mm.
5	Condensate Heat Exchanger (E-2202)	U-16-12-7-00	Flexpro Kamprofile or equivalent brand PN SS304 Core 3mm with 0.75 Graphite Layers on both sides. Total 4.5mm	3	Note: Reduce OD from 1065mm to 1063mm.
6	Condensate Heat Exchanger (E-2202)	U-16-12-8-00	Flexpro Kamprofile or equivalent brand PN SS304 Core 3mm with 0.75 Graphite Layers on both sides. Total 4.5mm	3	Note: Reduce OD from 890mm to 888.5mm.

7	Regen Gas Heater (E-2303)	U-16-15-03-00	Octagonal Ring SS304	3	
8	Regen Gas Heater (E-2303)	U-16-15-05-00	Octagonal Ring SS304	3	
9	Regen Gas Sub Cooler (E-2302)	U-16-14-03	Octagonal Ring SS304	3	
10	Regen Gas Sub Cooler (E-2302)	U-16-14-05	Octagonal Ring SS304	3	
11	Spiral Wound Gasket, 12"900#, Flexible Graphite Filled, Winding: SS316L, Inner Ring SS316L, Outer Ring CS			24	
12	Spiral Wound Gasket, 20" 600#, Flexible Graphite Filled, Winding: SS316L, Inner Ring SS316L, Outer Ring CS			15	
13	Spiral Wound Gasket 24" 150#, Flexible Graphite Filled, Winding: SS316L, Inner Ring SS316L, Outer Ring CS			15	

TERMS AND CONDITIONS:

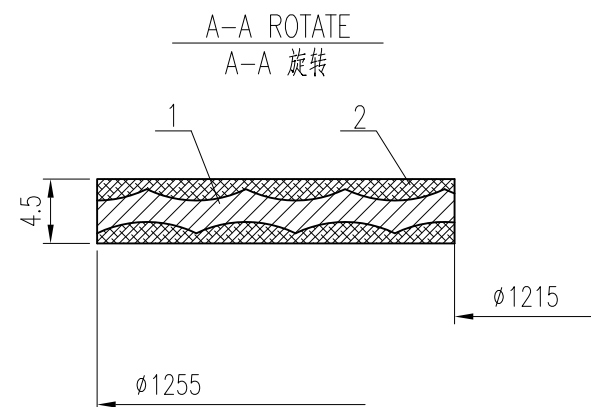
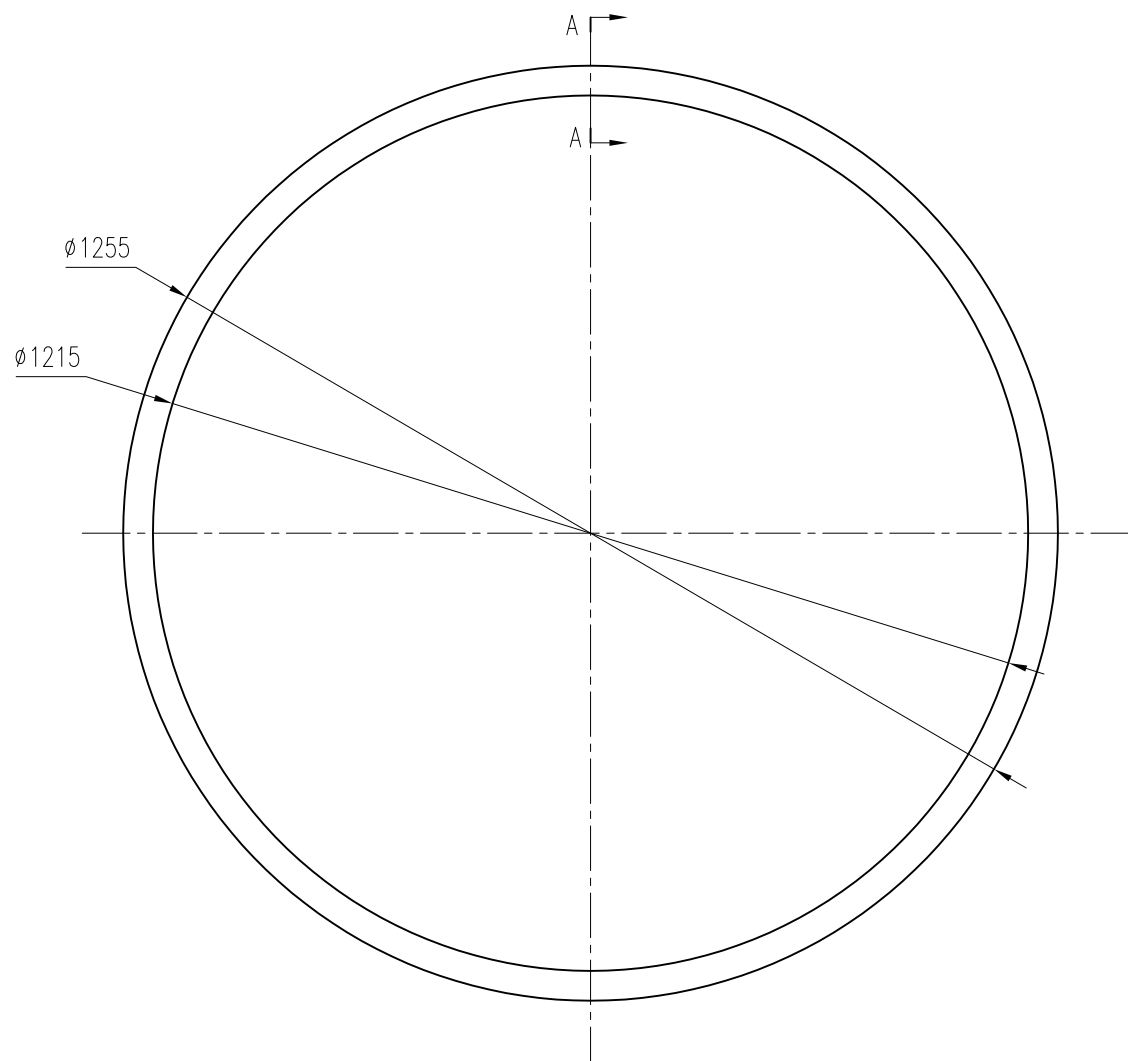
1. The material will be delivered at Nashpa Oil Field. The delivery charges to Nashpa Oil Field to be borne by the supplier/ bidder. Any damage during transportation will be borne by supplier.
2. Both Technical and Financial evaluation will be made on complete scope of supply
3. Certificate of Origin to be provided by vendor at the time of delivery. Gaskets made by M/S Flexitallic, M/S Spira Power(DONIT) and M/S Killinger or equivalent brand or make may be accepted.
4. The manufacturer of the gaskets must have an experience of 30 years or more of manufacturing gaskets.
5. The material shall be inspected upon delivery. Any item having inferior quality will be rejected immediately and the supplier shall be liable to replace the same up to the level of satisfaction of OGDCL.
6. Delivery of material will be 10-12 weeks from the placement of PO.
7. Any required technical clarification/details regarding material to be supplied must be cleared before submission of bid. No change in submitted bid will be entertained after bid submission date.
8. Material will be accepted after final inspection at site, and payment will be made through Cross cheque thereof.
9. The firm should have valid NTN and GST number and have active status on FBR website. The Firm should have active Professional tax certificate of concerned Excise office where operating business. These documents will be submitted as part of Bid.
10. Tax submission Certificate (Annex-C) will be provided along with Invoice.



Note: Reduce OD from 1255mm to 1253mm. Gasket prepared as per drawing didnt fit in the groove/profile.

2	U-16-11-04-02	METAL FRAME 金属骨架	S.S. 304				SEE THIS DRAWING 本图
1	U-16-11-04-01	FLEXIBLE GRAPHITE 柔性石墨	FLEXIBLE GRAPHITE				SEE THIS DRAWING 本图
ITEM NO. 序号	DWG NO. OR CODE 图号或标准	DESCRIPTION 名称及规格	MATERIAL 材料	QTY. 数量	UNIT 单位	TOTAL 合计	REMARK 备注
					重量 (kg)		

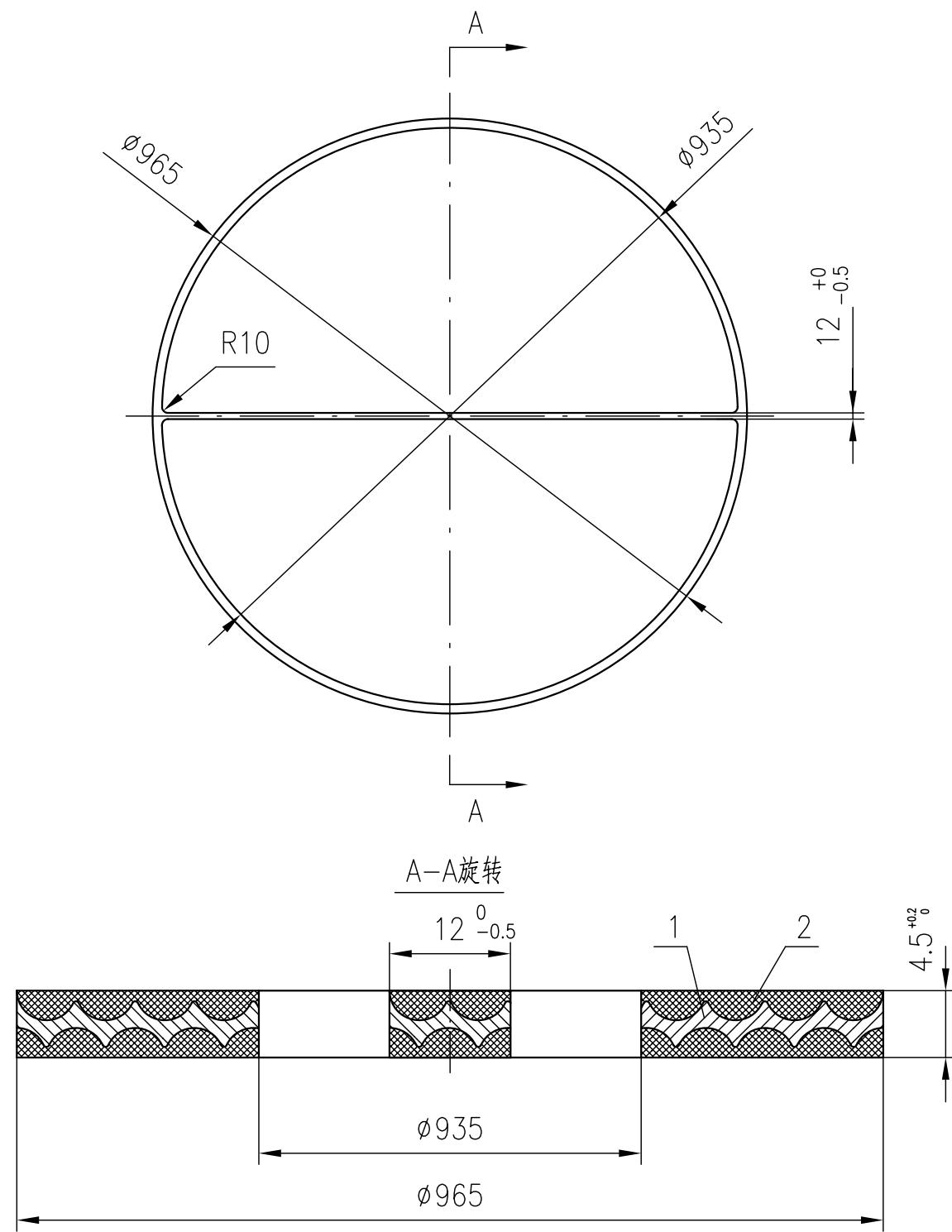
上海蓝滨石化设备有限责任公司 Shanghai Lanbin Petrochemical Equipment Co., Ltd.									
Prepared 设计	杨文光	2016.7.21	图名 DWG NAME		Project 项目	OED2016-13			
Approved 批准	王祥	2016.7.22	CHANNEL GASKET 管箱垫片 E-2201		Sub-Title 分项名称	Client 用户			
Job No. 工号	BU16-11				Scale 比例	1:10	Weight 质量	kg	
Draw 画法			Material	Assembly 组合件	DWG NO: 图号 U-16-11-04-00				
					Phase 设计阶段	Construction 施工图	Page 1 of 1 第1张共1张	Rev. 版次	0



Note: Reduce OD from 1255mm to 1253mm. Gasket prepared as per drawing didnt fit in the groove/profile.

ITEM NO. 序号	DWG NO. OR CODE 图号或标准	DESCRIPTION 名称及规格	MATERIAL 材料	QTY. 数量	UNIT 单位	TOTAL 合计	REMARK 备注
2	U-16-11-05-02	METAL FRAME 金属骨架	S.S. 304				SEE THIS DRAWING 本图
1	U-16-11-05-01	FLEXIBLE GRAPHITE 柔性石墨	FLEXIBLE GRAPHITE				SEE THIS DRAWING 本图

 上海蓝滨石化设备有限责任公司 Shanghai Lanbin Petrochemical Equipment Co., Ltd.									
Prepared 设计	杨文光	2016.7.21	图名 DWG NAME		Project 项目	OED2016-13			
Approved 批准	王祥	2016.7.22	SHELL GASKET 筒体垫片 E-2201		Sub-Title 分项名称	Client 用户			
Job No. 工号	BU16-11				Scale 比例	1:10	Weight 质量	kg	
Draw 画法			Material	Assembly 组合件	DWG NO: 图号 U-16-11-05-00				
					Phase 设计阶段	Construction 施工图	Page 1 of 1 第1张共1张	Rev. 版次	0



Note: Reduce OD from 965mm to 963.5mm. Gasket prepared as per drawing didnt fit in the grove/profile.

GENERAL NOTES (技术要求)

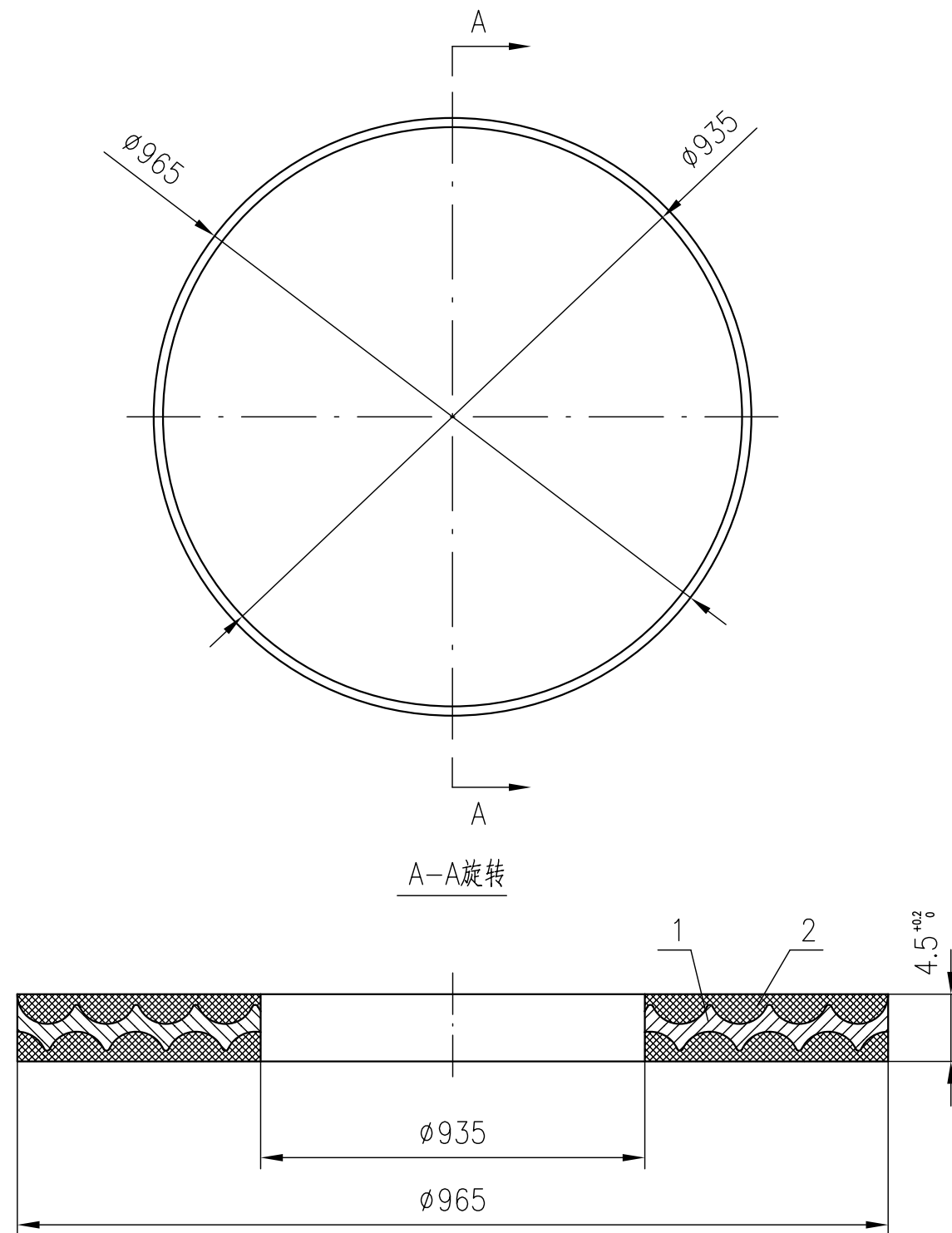
1. THE GASKET SHALL BE FABRICATED AND ACCEPTED ACCORDING TO GB/T 19066.1~3-2003.
本垫片按照GB/T 19066.1~3-2003的要求制造和验收。

NOTE: 1. ALL DIMENSIONS IN MILLIMETERS(mm) UNLESS NOTED OTHERWISE.
除注明者外,所有尺寸均为毫米(mm);

2	U-16-12-2-02	GRAPHITE 柔性石墨	GRAPHITE 柔性石墨	1			SEE THIS DRAWING 本图
1	U-16-12-2-01	PLATE 金属骨架	SA-240M UNS S30408	1			SEE THIS DRAWING 本图
ITEM NO. 序号	DWG NO. OR CODE 图号或标准	DESCRIPTION 名称及规格	MATERIAL 材料	QTY. 数量	UNIT 单位 WEIGHT 重量	TOTAL 合计 (Kg)	REMARKS 备注

上海蓝滨石化设备有限责任公司
Shanghai Lanbin Petrochemical Equipment Co., Ltd.

Prepared 设计	尚妍	2016.7.20	图名 DWG NAME	Project 项目	OED2016-13				
Approved 批准	王祥	2016.7.20	CHANNEL GASKETS 管箱垫片 E-2202	Sub-Title 分项名称	Client 用户				
Job No. 工号	BU16-12			Scale 比例	1:10	Weight 质量	Kg		
Draw 画法			Material	Assembly 组合件	DWG NO: 图号	U-16-12-2-00			
					Phase 设计阶段	Construction 施工图	Page 1 of 1 第1页共1页	Rev. 版次	0




Note: Reduce OD from 965mm to 963.5mm. Gasket prepared as per drawing didnt fit in the groove/profile.

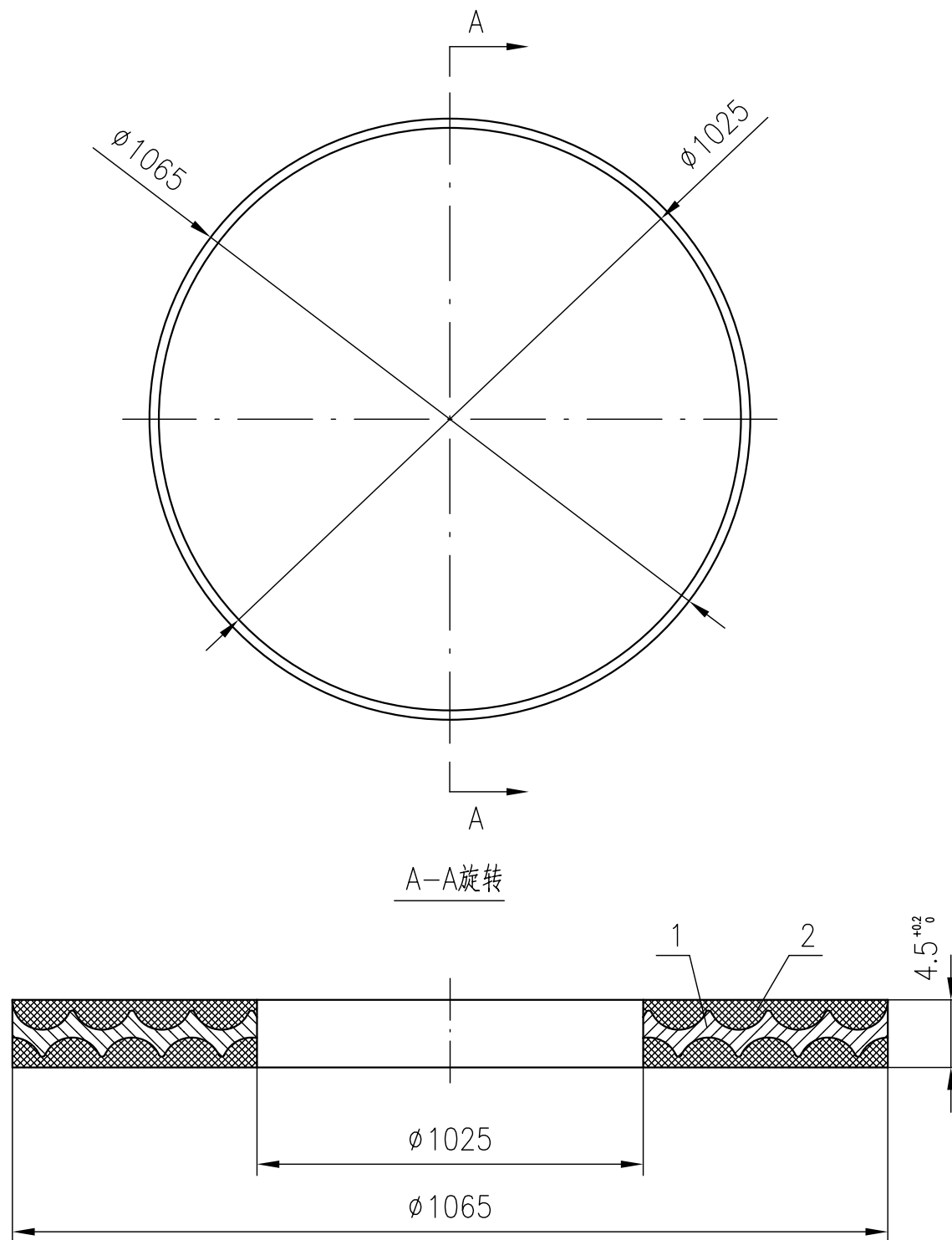
GENERAL NOTES (技术要求)

1. THE GASKET SHALL BE FABRICATED AND ACCEPTED ACCORDING TO GB/T 19066.1~3-2003.
本垫片按照GB/T 19066.1~3-2003的要求制造和验收。

NOTE: 1. ALL DIMENSIONS IN MILLIMETERS(mm) UNLESS NOTED OTHERWISE.
除注明者外,所有尺寸均为毫米(mm);

2	U-16-12-3-02	GRAPHITE 柔性石墨	GRAPHITE 柔性石墨	1			SEE THIS DRAWING 本图
1	U-16-12-3-01	PLATE 金属骨架	SA-240M UNS S30408	1			SEE THIS DRAWING 本图
ITEM NO. 序号	DWG NO. OR CODE 图号或标准	DESCRIPTION 名称及规格	MATERIAL 材料	QTY. 数量	UNIT 单位 WEIGHT 重量	TOTAL 合计 (Kg)	REMARKS 备注

 上海蓝滨石化设备有限责任公司 Shanghai Lanbin Petrochemical Equipment Co., Ltd.							
Prepared 设计	尚妍	2016.7.20	图名 DWG NAME			Project 项目	OED2016-13
Approved 批准	王祥	2016.7.20	SHELL GASKETS			Sub-Title 分项名称	Client 用户
			管箱侧垫片 E-2202			Scale 比例	1:10
Job No. 工号	BU16-12					DWG NO: 图号	U-16-12-3-00
Draw 画法			Material	Assembly 组合件	Phase 设计阶段	Construction 施工图	Page 1 of 1 第1页共1页
					Rev. 版次	0	




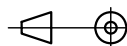
Note: Reduce OD from 1065mm to 1063mm. Gasket prepared as per drawing didnt fit in the grove/profile.

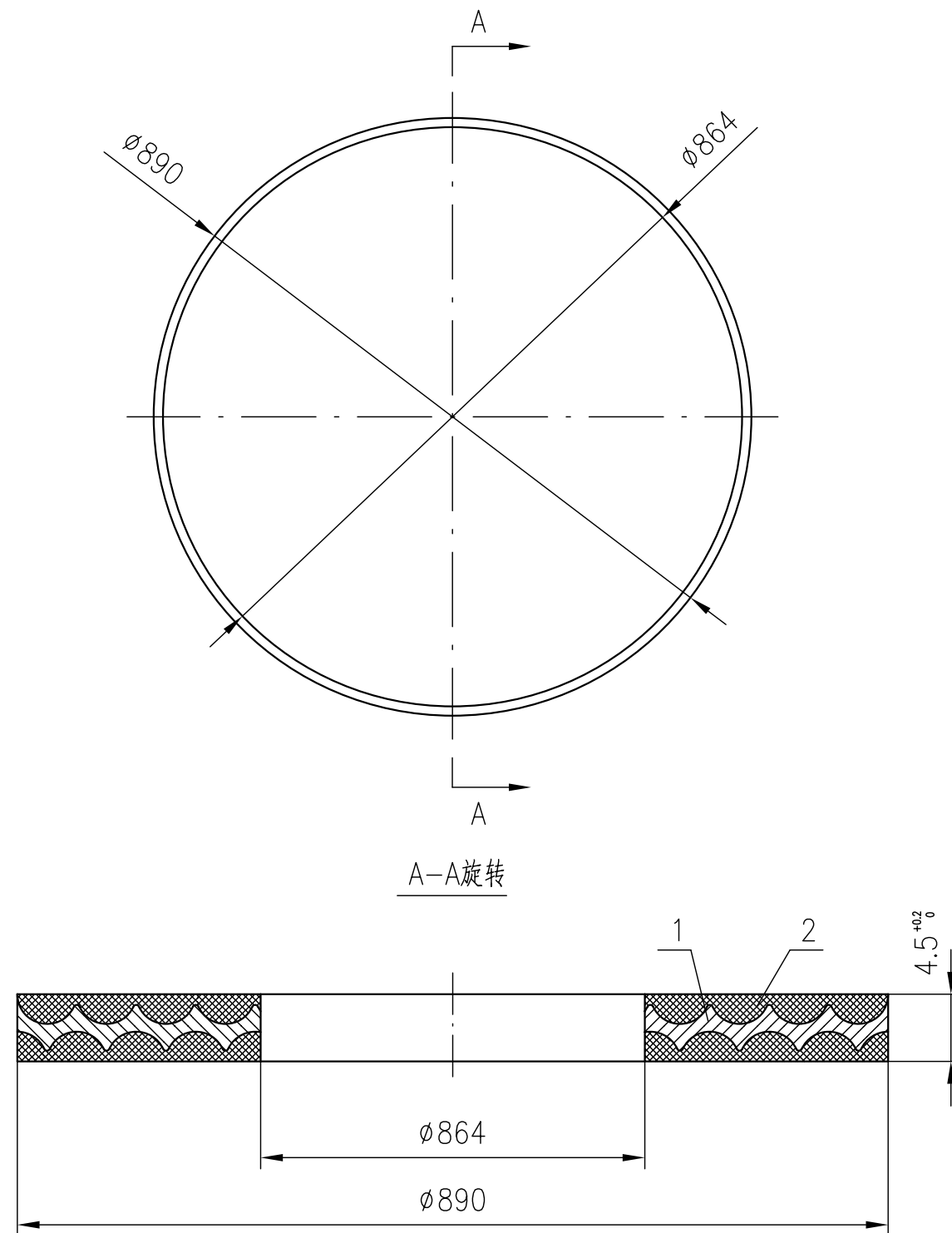
GENERAL NOTES (技术要求)

1. THE GASKET SHALL BE FABRICATED AND ACCEPTED ACCORDING TO GB/T 19066.1~3-2003.
本垫片按照GB/T 19066.1~3-2003的要求制造和验收。

NOTE: 1. ALL DIMENSIONS IN MILLIMETERS(mm) UNLESS NOTED OTHERWISE.
除注明者外,所有尺寸均为毫米(mm);

ITEM NO. 序号	DWG NO. OR CODE 图号或标准	DESCRIPTION 名称及规格	MATERIAL 材料	QTY. 数量	UNIT 单位 WEIGHT 重量	TOTAL 合计 (Kg)	REMARKS 备注
2	U-16-12-7-02	GRAPHITE 柔性石墨	GRAPHITE 柔性石墨	1			SEE THIS DRAWING 本图
1	U-16-12-7-01	PLATE 金属骨架	SA-240M UNS S30408	1			SEE THIS DRAWING 本图

 上海蓝滨石化设备有限责任公司 Shanghai Lanbin Petrochemical Equipment Co., Ltd.							
Prepared 设计	尚妍	2016.7.20	图名 DWG NAME		Project 项目	OED2016-13	
Approved 批准	王祥	2016.7.20	REAR HEAD END GASKETS		Sub-Title 分项名称	Client 用户	
			外头盖垫片 E-2202		Scale 比例	1:10	Weight 质量 Kg
Job No. 工号	BU16-12				DWG NO: 图号 U-16-12-7-00		
Draw 画法			Material	Assembly 组合件	Phase 设计阶段	Construction 施工图	Page 1 of 1 第1页共1页
					Rev. 版次	0	




Note: Reduce OD from 890mm to 888.5mm. Gasket prepared as per drawing didnt fit in the grove/profile.

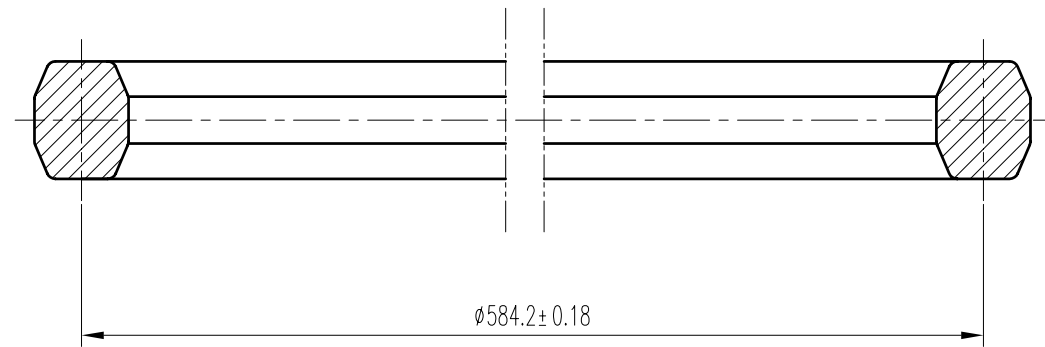
GENERAL NOTES (技术要求)

1. THE GASKET SHALL BE FABRICATED AND ACCEPTED ACCORDING TO GB/T 19066.1~3-2003.
本垫片按照GB/T 19066.1~3-2003的要求制造和验收。

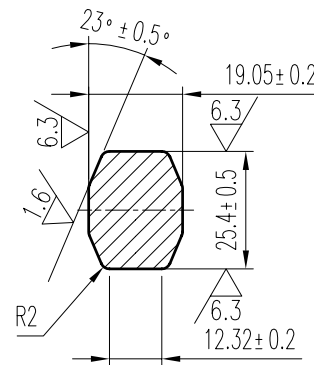
NOTE: 1. ALL DIMENSIONS IN MILLIMETERS(mm) UNLESS NOTED OTHERWISE.
除注明者外,所有尺寸均为毫米(mm);

ITEM NO. 序号	DWG NO. OR CODE 图号或标准	DESCRIPTION 名称及规格	MATERIAL 材料	QTY. 数量	UNIT 单位 WEIGHT 重量	TOTAL 合计 (Kg)	REMARKS 备注
2	U-16-12-8-02	GRAPHITE 柔性石墨	GRAPHITE 柔性石墨	1			SEE THIS DRAWING 本图
1	U-16-12-8-01	PLATE 金属骨架	SA-240M UNS S30408	1			SEE THIS DRAWING 本图

 上海蓝滨石化设备有限责任公司 Shanghai Lanbin Petrochemical Equipment Co., Ltd.							
Prepared 设计	尚妍	2016.7.20	图名 DWG NAME	Project 项目	OED2016-13		
Approved 批准	王祥	2016.7.20	FLOATING HEAD GASKETS	Sub-Title 分项名称	Client 用户		
Job No. 工号	BU16-12		浮头垫片 E-2202	Scale 比例	1:10	Weight 质量	Kg
Draw 画法		Material	Assembly 组合件	DWG NO: 图号	U-16-12-8-00		
				Phase 设计阶段	Construction 施工图	Page 1 of 1 第1页共1页	Rev. 版次


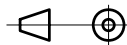


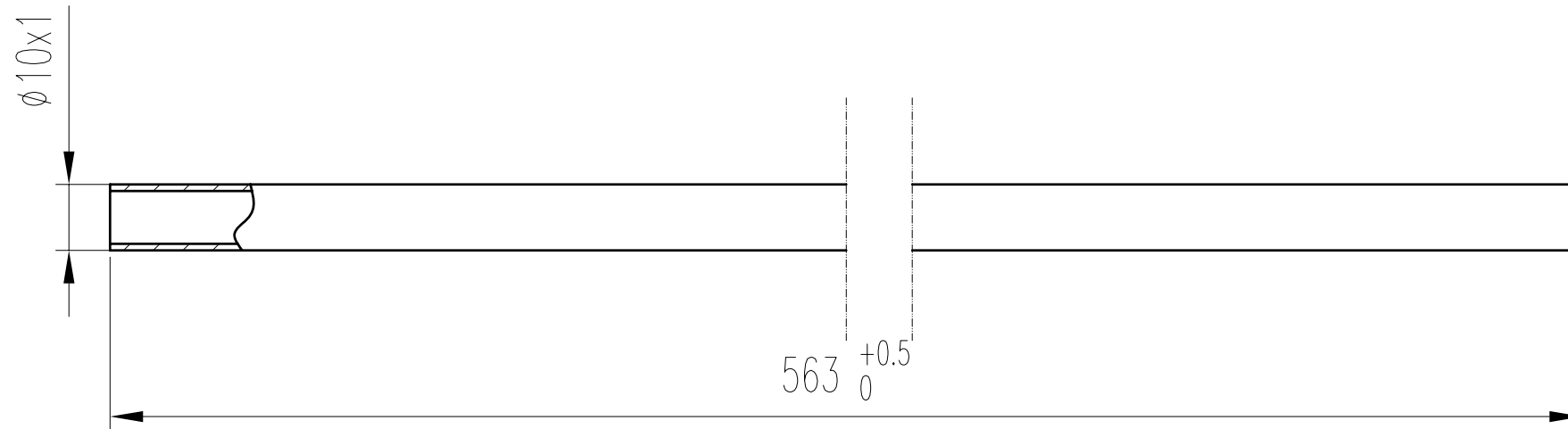
垫片截面图



GENERAL NOTES 技术要求


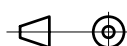
1. THE GASKET SHALL BE MADE AND ACCEPTED AS REQUIRED BY ASME B16.20;
本垫片应按 ASME B16.20 的要求制造和验收;
2. The maximum hardness of the gasket is $\leq 110\text{HB}$.
垫片最大硬度 $\leq 110\text{HB}$.

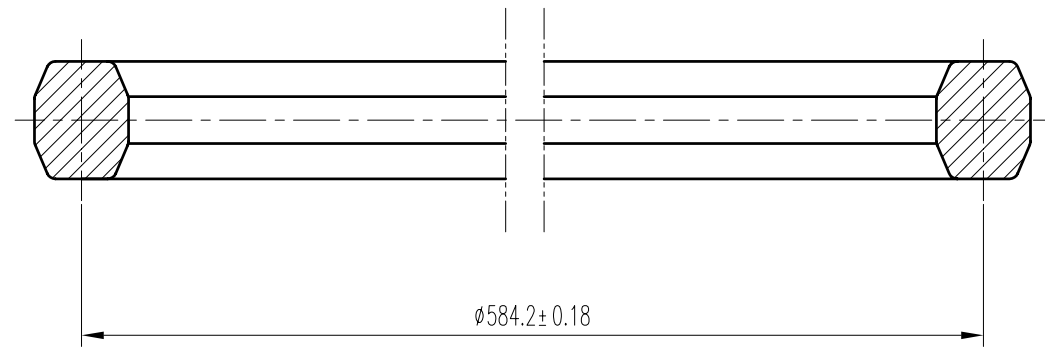
 上海蓝滨石化设备有限责任公司 Shanghai Lanbin Petrochemical Equipment Co., Ltd.		Project 项目		OED2016-13	
Prepared 设计	齐志	2016.07.14	图名 DWG NAME		
Approved 批准	王群	2016.07.14	CHANNEL GASKETS		
Job No. 工号	BU16-14		管箱垫片		
Draw 画法			E-2302		
			Material	SOFT IRON	
			Phase 设计阶段	Construction 施工图	Page 1 of 1 第1张共1张
			Client 用户	Weight 质量	Rev. 版次
				8.35	0
			DWG NO: 图号 U-16-14-03		



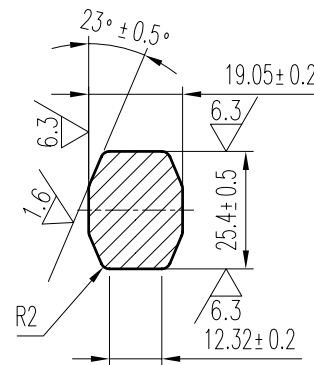
技术要求

1. 铝管的选用应符合GB/T6893-2010《铝及铝合金拉(轧)制无缝管》的要求;
2. 加工后去毛刺

 上海蓝滨石化设备有限责任公司 Shanghai Lanbin Petrochemical Equipment Co., Ltd.		Project 项目		OED2016-13	
Prepared 设计	李志	2016.07.14	图名 DWG NAME		Sub-Title 分项名称
Approved 批准	王群	2016.07.14	PARTATION PLATE GASKETS 隔板垫片 E-2302		Client 用户
Job No. 工号	BU16-14				Scale 比例
Draw 画法			Material		Al
			DWG NO: 图号		U-16-14-04
			Phase 设计阶段	Construction 施工图	Page 1 of 1 第 1 张 共 张
			Rev. 版次		0


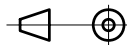


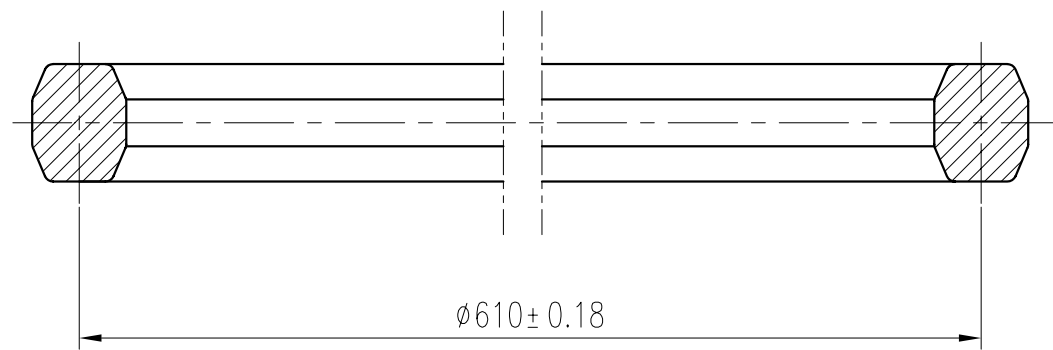
垫片截面图



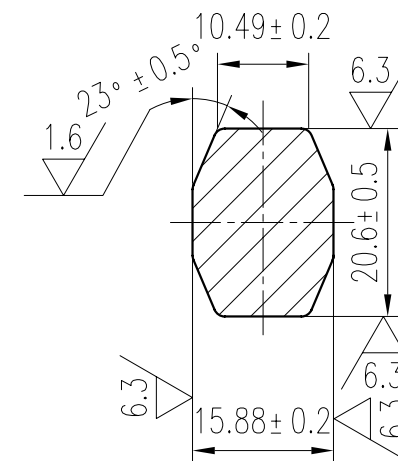
GENERAL NOTES 技术要求

1. THE GASKET SHALL BE MADE AND ACCEPTED AS REQUIRED BY ASME B16.20;
本垫片应按 ASME B16.20 的要求制造和验收;
2. The maximum hardness of the gasket is $\leq 110\text{HB}$.
垫片最大硬度 $\leq 110\text{HB}$.

 上海蓝滨石化设备有限责任公司 Shanghai Lanbin Petrochemical Equipment Co., Ltd.		Project 项目		OED2016-13	
Prepared 设计	齐志	2016.07.14	图名 DWG NAME		Sub-Title 分项名称
Approved 批准	王群	2016.07.14	SHELL GASKETS		Client 用户
Job No. 工号	BU16-14		管箱侧垫片		Scale 比例
Draw 画法		Material	SOFT IRON	DWG NO: 图号	
				U-16-14-05	
				Phase 设计阶段	Construction 施工图
				Page 1 of 1 第1张共1张	Rev. 版次
					0


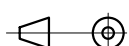


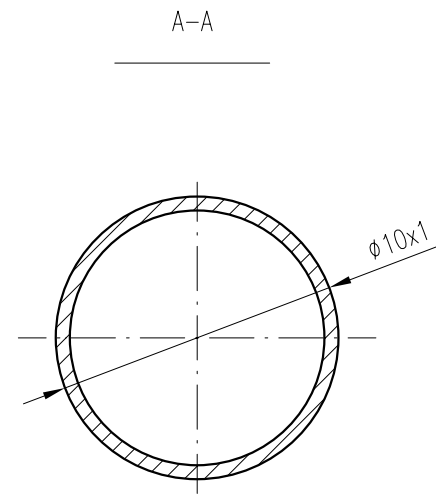
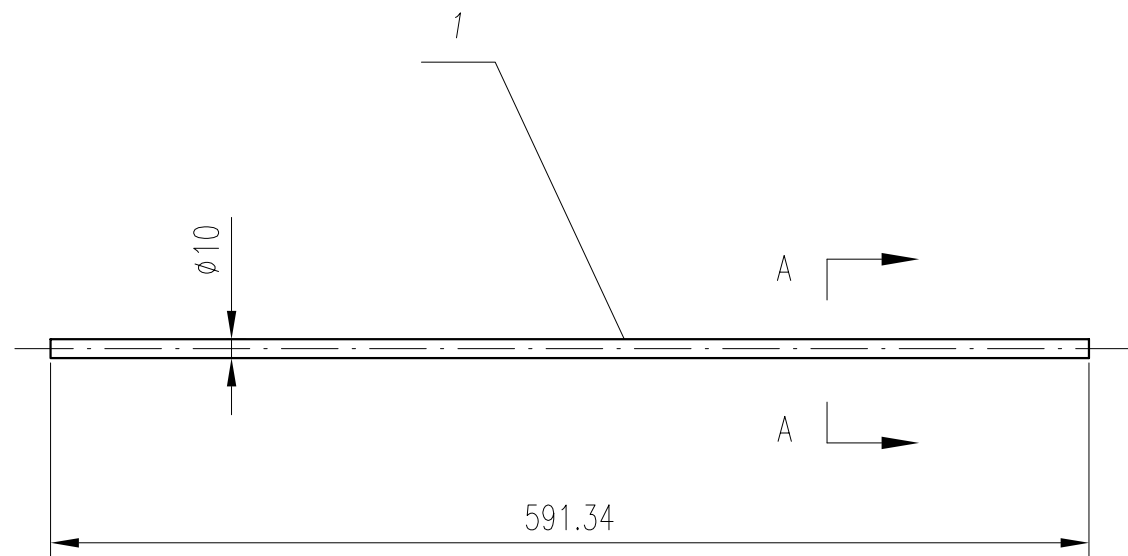
垫片截面图


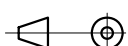


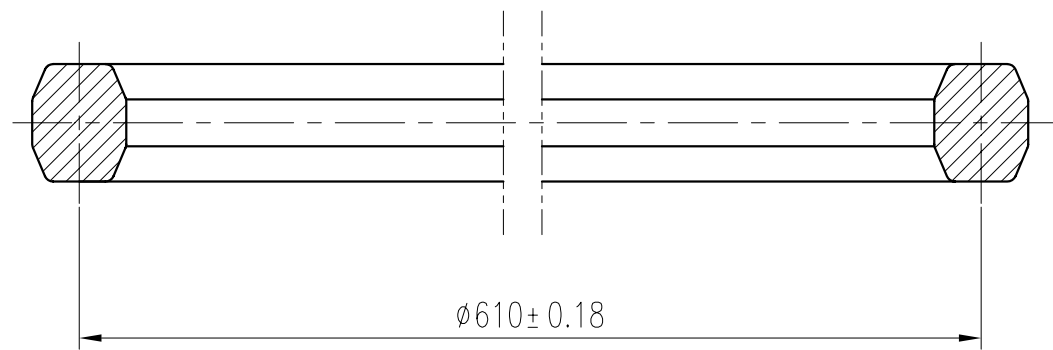
技术要求

1. 本垫片应按 ASME B16.20 的要求制造和验收;
2. 垫片最大硬度 $\leq 110\text{HB}$.

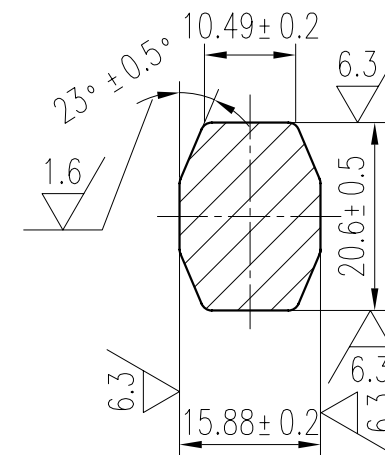
 上海蓝滨石化设备有限责任公司 Shanghai Lanbin Petrochemical Equipment Co., Ltd.		Project 项目		OED2016-13					
		Sub-Title 分项名称	Client 用户						
Prepared 设计	贺鹤	图名 DWG NAME CHANNEL GASKETS 管箱垫片 E-2303		Scale 比例	1:20	Weight 质量	24kg		
Approved 批准	王琛			DWG NO: 图号 U-16-15-03-00					
Job No. 工号	BU16-15								
Draw 画法		Material	SOFT IRON		Phase 设计阶段	Construction 施工图	Page 1 of 1 第 1 张 共 1 张	Rev. 版次	0



 上海蓝滨石化设备有限责任公司 Shanghai Lanbin Petrochemical Equipment Co., Ltd.		Project 项目		OED2016-13				
Prepared 设计	贺鹤	图名 DWG NAME	Sub-Title 分项名称	Client 用户				
Approved 批准	王琛		Scale 比例	1:20	Weight 质量	0.07kg		
Job No. 工号	BU16-15		PARTATION PLATE GASKETS 隔板垫片		DWG NO: 图号 U-16-15-04-00			
Draw 画法		Material	AL	Phase 设计阶段	Construction 施工图	Page 1 of 1 第 1 张 共 1 张	Rev. 版次	0




垫片截面图



技术要求

1. 本垫片应按 ASME B16.20 的要求制造和验收;
2. 垫片最大硬度 $\leq 150\text{HB}$.

 上海蓝滨石化设备有限责任公司 Shanghai Lanbin Petrochemical Equipment Co., Ltd.		Project 项目		OED2016-13					
		Sub-Title 分项名称		Client 用户					
Prepared 设计	贺鹤	图名 DWG NAME SHELL GASKETS 管箱侧垫片 E-2303		Scale 比例	1:20	Weight 质量	24kg		
Approved 批准	王琛			DWG NO: 图号 U-16-15-05-00					
Job No. 工号	BU16-15								
Draw 画法		Material	SOFT IRON		Phase 设计阶段	Construction 施工图	Page 1 of 1 第 1 张 共 1 张	Rev. 版次	0