



OIL AND GAS DEVELOPMENT COMPANY LIMITED

QADIRPUR GAS FIELD/PLANT, GHOTKI SINDH

SCHEDULE OF REQUIREMENT

1. BOQ FOR PIPE SUPPORT, SLEEPER AND PLATFORM FOUNDATION

Item. No.	PARTICULARS	Qty.	Unit	Rate	Amount in Rs.
1.0	EXCAVATION				
	Excavation for all type of foundations in all kinds of soil, dry or wet, hard or soft, including all operation, complete with site clearance, breaking clods, levelling, dressing, dewatering, disposal, shoring, compacting as per instruction and specification of the consultant and approval of client (Site Engineer). Contractor will carry out compaction test as per specification without any extra cost.				
1.1	Pipe Support	29.0	m ³		
1.2	Sleeper	3.20	m ³		
1.3	Platform	0.95	m ³		
2.0	PLAIN CEMENT CONCRETE				
	Providing and laying Plain cement concrete of specified strength for blinding work using approved quality 3/4" max. size graded crushed aggregate & fine aggregate of required properties including approved Steel formwork & its removal, all operations of vibrating, levelling, compacting and curing etc. complete as per specification & instruction of the Consultant. Note: 1. SR cement should be used for all works. 2. Mix design for each type of sample will be provided by the Contractor				
2.1	PCC 1:4:8 (1 cement 4 sand and 8 coarse aggregate) C15				
2.1.1	Pipe Support	1.35	m ³		
2.1.2	Sleeper	1.00	m ³		
2.1.3	Platform	0.11	m ³		
3.0	REINFORCED CEMENT CONCRETE				

	<p>Providing and laying Reinforced cement concret shall be developed 28 days cylindrical strength of 3000psi, using approved quality 3/4" max. size graded crushed aggregate & fine aggregate including approved form work & its removal, all operations of vibrating, levelling, compacting and curing etc. complete but excluding the cost of steel as per specification & instruction of the Consultant. To confirm the desired cylindrical strength 3000Psi (minimum) at 28days(3+3 minimum at 7 and 28 days) the 6in dia and 12" long cylinder tests will be carried out by contractor from approved laboratory.</p> <p>Note: 1. SR cement should be used for all concrete works. 2. Mix design for each type of sample will be provided by the Contractor</p>				
3.1	Pipe Support	10.0	m ³		
3.2	Sleeper	3.7	m ³		
3.3	Platform	0.74	m ³		
4.0	STEEL REINFORCEMENT				
	<p>Providing and laying hard grade ribbed deformed (min yield strength 60,000 psi) steel reinforcement bars including the cost of straightening, cutting, bending, binding, wastage and such overlaps that are not shown in drawings, placing in position on cement concrete 1:2:4 precast spacer block or m.s chairs, tying with binding wire (GI wire of 18 gauge), including cost of chairs and wires etc in all kinds of RCC works. Complete in all respect to the approval of Client (Site Engineer).</p>				
4.1	Pipe Support	1184.0	kg		
4.2	Sleeper	150.00	kg		
4.3	Platform	99.20	kg		
5.0	STEEL EMBEDDED PARTS				
	<p>Providing, fabricating and fixing of steel embedded parts in concrete such as M.S plates, Anchor lugs, Angles, Bolts with double nuts and washer etc. Complete as per drawings, specifications and approval of Client (Site Engineer).</p>				
5.1	Pipe Support	372.0	kg		
5.2	Sleeper	75.0	kg		
5.3	Platform	11.83	kg		
6.0	BITUMEN COATING				
	<p>Supply & Laying 1200 micron thick 10/20 grade of bitumen for foundations after two coat of primer outside foundation up to finished ground level to sides of footings including cost of all material, labour, equipment etc. complete as per drawing and specification and as directed by the Engineer Incharge.</p>				
6.1	Pipe Support	60.0	m ²		
6.2	Sleeper	7.00	m ²		
6.3	Platform	7.92	m ²		
7.0	NON-SHRINKAGE GROUT				

	Supply & laying of 25 mm thk. non-shrinkage grout, having minimum compressive strength of 40 N/mm ² of FOSPAK and SIKA or equivalent as approved by client in accordance with the Company specification, as per drawings, instruction and specification of the Consultant and approval of Client (Site Engineer).				
7.1	Pipe Support	2.73	m ²		
7.2	Platform	0.36	m ²		
8.0	STEEL STRUCTURE				
	Supply of all material, fabrication, painting, erection, surface preparation of steel structure etc. Complete in all respect as per drawing, instruction and specification of the Consultant and approval of Client (Site Engineer).				
8.1	ACCESS PLATFORM	1050.0	kg		
8.2	PIPE SUPPORT STRUCTURE	1900.0	kg		
	Total Cost (Including Applicable Taxes)				

2. BOQ FOR INLET,OUTLET,DRAIN VALVE & FILTER SEPARATOR FOUNDATION

Item. No.	PARTICULARS	Qty.	Unit	Rate	Amount in Rs.
1.0	EXCAVATION				
	Excavation for all type of foundations in all kinds of soil, dry or wet, hard or soft, including all operation, complete with site clearance, breaking clods, levelling, dressing, dewatering, disposal, shoring, compacting as per instruction and specification of the consultant and approval of client (Site Engineer). Contractor will carry out compaction test as per specification without any extra cost.				
1.1	Inlet & Outlet Skid	8.90	m ³		
1.2	Drain Valve Skid	4.40	m ³		
1.3	Filter Separator	50.00	m ³		
2.0	PLAIN CEMENT CONCRETE				
	Providing and laying Plain cement concrete of specified strength for blinding work using approved quality 3/4" max. size graded crushed aggregate & fine aggregate of required properties including approved Steel formwork & its removal, all operations of vibrating, levelling, compacting and curing etc. complete as per specification & instruction of the Consultant. Note: 1. SR cement should be used for all works. 2. Mix design for each type of sample will be provided by the Contractor				
2.1	PCC 1:4:8 (1 cement 4 sand and 8 coarse aggregate)				
2.1.1	Inlet & Outlet Skid	2.50	m ³		
2.1.2	Drain Valve Skid	1.10	m ³		
2.1.3	Filter Separator	3.00	m ³		
2.2	PCC 1:2:4 (1 cement 2 sand and 4 coarse aggregate)				
2.2.1	Stair Block	0.20	m ³		
3.0	REINFORCED CEMENT CONCRETE				
	Providing and laying Reinforced cement concrete shall be developed 28 days cylindrical strength of 3000psi, using approved quality 3/4" max. size graded crushed aggregate & fine aggregate including approved form work & its removal, all operations of vibrating, levelling, compacting and curing etc complete but excluding the cost of steel as per specification & instruction of the Consultant. To confirm the desired cylindrical strength 3000Psi (minimum) at 28days (3+3 minimum at 7 and 28 days) the 6in dia and 12" long cylinder tests will be carried out by contractor from approved laboratory. Note: 1. SR cement should be used for all concrete works. 2. Mix design for each type of sample will be provided by the Contractor				
3.1	Inlet & Outlet Skid	8.3	m ³		

3.2	Drain Valve Skid	4.1	m ³		
3.3	Filter Separator	15.20	m ³		
4.0	STEEL REINFORCEMENT				
	Providing and laying hard grade ribbed deformed (min yield strength 60,000 psi) steel reinforcement bars including the cost of straightening, cutting, bending, binding, wastage and such overlaps that are not shown in drawings, placing in position on cement concrete 1:2:4 precast spacer block or m.s chairs, tying with binding wire (GI wire of 18 gauge), including cost of chairs and wires etc. in all kinds of RCC works. Complete in all respect to the approval of Client (Site Engineer).				
4.1	Inlet & Outlet Skid	595	kg		
4.2	Drain Valve Skid	290	kg		
4.3	Filter Separator	1375	kg		
5.0	STEEL EMBEDDED PARTS				
	Providing, fabricating and fixing of steel embedded parts in concrete such as M.S plates, Anchor lugs, Angles, Bolts with double nuts and washer etc. Complete as per drawings, specifications and approval of Client (Site Engineer).				
5.1	M12 Hilti Bolts	2	Nos		
5.2	M16 Hilti Bolts	40	Nos		
5.4	M24 Hilti Bolt	8	Nos		
5.5	M42 Anchor Bolts	140.0	Kg		
6.0	BITUMEN COATING				
	Supply & Laying 1200 micron thick 10/20 grade of bitumen for foundations after two coat of primer outside foundation up to finished ground level to sides of footings including cost of all material, labour, equipment etc. complete as per drawing and specification and as directed by the Engineer Incharge.				
6.1	Inlet & Outlet Skid	9.36	m ²		
6.2	Drain Valve Skid	4.40	m ²		
6.3	Filter Separator	44.00	m ²		
7.0	NON-SHRINKAGE CEMENTITIOUS GROUT				
	Supply & laying of 25 mm thk. non-shrinkage cementitious grout, having minimum compressive strength of 40 N/mm ² of FOSPAK and SIKA or equivalent as approved by client in accordance with the Company specification, as per drawings, instruction and specification of the Consultant and approval of Client (Site Engineer).				
7.1	Inlet & Outlet Skid	22.42	m ²		
7.2	Drain Valve Skid	11.00	m ²		
7.3	Filter Separator	2.10	m ²		

8.0	ROAD BASE LAYER				
	Providing and laying 2 layers, each having thickness of 200mm, blend of Gravel & fine material, when compacted will form hard surface with high mechanical strength of approved quality as described in drawings, under foundations, filling voids with spawels, consolidating and compacting with mechanical means as per drawings, specifications and instruction of Consultant and approval Client (Site Engineer).				
8.1	Filter Separator	6.00	m ³		
9.0	GRAVEL & COBBLE FILL MATERIAL				
	Providing and laying 200mm thick each layer of Gravel, Cobbles & pebbles size material before laying road base material and filling voids with spawels, consolidating and compacting with mechanical means as per drawings, specifications and instruction of Consultant and approval Client (Site Engineer).				
9.1	Filter Separator	6.00	m ³		
	Total Cost (Including Applicable Taxes)				

General Term & Conditions:

1. The Owner, Oil & Gas Development Company Limited (OGDCL) is interested in inviting bids for the Construction of foundation of New Filter Coalescer along with associated Pipe Supports, Sleeper, Platform, Inlet/Outlet Lines and Drain Valves Foundation. Filter Coalescer (FC-101) from reputable companies at Qadirpur Gas Plant (Ghotki, Sindh).
2. The contractor must have 5 Year of relevant experience in construction of foundation of stationary plant equipment i.e Separators, Absorbers, Heat Exchangers etc.
3. Contractor will share construction procedures as per ISO/API codes & standards with OGDCL.
4. Contractor will share QIP including Quality Inspection Points & Hold points.
5. OGDCL reserves the right to change (increase/decrease) the scope of the work at any time keeping in view the operational requirements.
6. Contractor can visit the site to confirm the provided scope of work by OGDCL for bidding and clarification of scope (if any).
7. In case of any delay in completion of job startup of plant due to contractor. Contractor will be held responsible and will be liable for penalty as per company policy.
8. The Quantities contained in the scope of work for each activity are estimated and liable to change (increase, decrease or omitted) when the work is actually executed. The Owner does not expressly or by implication guarantee that actual quantities of work to be performed will correspond to the scope of work submitted with this tender document. The payment to be made to the Contractor shall be based on the actual quantity of work performed. OGDCL reserves the right to change (increase/decrease) the scope of the work at any time keeping in view the operational requirements. In such case, quoted unit rates will be applicable.
9. The Contractor shall quote separate rate for each activity against the quantities.
10. Unit rates quoted by bidder shall be firm. No extra payments on account of escalation in prices due to any reason shall be admissible.
11. The Contractor shall be paid only for the work duly approved by Owner's representative. Any rework due to poor quality, demonstrated by inspection by OGDCL shall be on Contractor's account.
12. In case of prolonged delay in execution of jobs at any stage, OGDCL reserves the right to hire any third party on contractor's risk & cost for job completion.

- 13. Only land (for placement of caravans) for lodging (accommodation) will be provided to the Contractor's Man Power.**
- 14. Job Completion Time is 60 days from handing over of the site. Contractor will be allowed to work round the clock. Plant shutdown is not required in this case.**
- 15. Contractor will be responsible for transportation, Shifting, Lifting of Filter Coalescer foundation construction material.**
- 16. Contractor will be responsible for shifting of leftover material and will ensure proper housekeeping.**
- 17. Contractor and his labour will follow OGDCL guidelines/policies related to HSE.**
- 18. Contactor must execute the civil foundation construction work for Filter Coalescer as per attached drawings.**



OIL & GAS DEVELOPMENT COMPANY LIMITED

0504186: INSTALLATION OF FILTER COALESCER FOR SERIES OPERATION OF PRCP AND QICP

(CIVIL PACKAGE)

CONSULTANTS:

OCTOBER, 2020



Petrochemical Engineering Consultants

C-2, Block No. 17, Gulshan-E-Iqbal, Karachi-75300, Pakistan.
Telephones: +92 (21) 34827780, 34961088, Fax: +92 (21) 34961089
E-Mail: contact@pcec.com.pk web: www.pcec.com.pk

Disclaimer

This report has been prepared on behalf of OIL & GAS DEVELOPMENT COMPANY LIMITED "OGDCL" and for the exclusive use of OGDCL and is subject to and issued in accordance with the agreement between Petrochemical Engineering Consultants "PEC" & OGDCL. PEC accept no liability or responsibility whatsoever for it in respect of any use of or reliance upon this report by any third party.

Copying this report without the permission of Petrochemical Engineering Consultants is not permitted.

REV	DESCRIPTION	ORIG	REVIEW	PEC APPROVAL	DATE	CLIENT APPROVAL	DATE
0	ISSUED FOR REVIEW	<u> </u> AISHA	<u> </u> Sh.ADEEL	<u> </u> ADEEL	MARCH 26, 2019		
1	RE-ISSUED FOR REVIEW	<u> </u> HAMMAD	<u> </u> Sh.ADEEL	<u> </u> ADEEL	AUGUST 11 , 2020		
2	RE-ISSUED FOR REVIEW	<u> </u> HAMMAD	<u> </u> Sh.ADEEL	<u> </u> ADEEL	OCTOBER 21 , 2020		

CIVIL WORKS DRAWING LIST



OIL & GAS DEVELOPMENT COMPANY LIMITED

INSTALLATION OF FILTER COALESCER FOR SERIES OPERATION OF PRCP AND QICP QADIRPUR PLANT CIVIL DRAWING LIST

DOC. NO. :0504186-CIV-LT-001

PREP. : HAK

REV. : 2

DATE. : 21/10/2020

S.NO	DESCRIPTION	DRAWING NO.	REVISION	REMARKS
1.0	CIVIL KEY PLAN QADIRPUR PLANT	0504186-CIV-LO-001 (SH 1 OF 2)	2	RE-ISSUED FOR REVIEW
1.1	FOUNDATION LAYOUT QADIRPUR PLANT	0504186-CIV-LO-001 (SH 2 OF 2)	2	RE-ISSUED FOR REVIEW
1.2	STEEL STRUCTURE PIPE SUPPORTS FOUNDATION SCHEDULE QADIRPUR PLANT	0504186-CIV-DT-001 (SHEET 1 OF 3)	2	RE-ISSUED FOR REVIEW
1.2	STEEL STRUCTURE PIPE SUPPORTS FOUNDATION SCHEDULE QADIRPUR PLANT	0504186-CIV-DT-001 (SHEET 2 OF 3)	2	RE-ISSUED FOR REVIEW
1.3	STEEL STRUCTURE PIPE SUPPORTS FOUNDATION SCHEDULE QADIRPUR PLANT	0504186-CIV-DT-001 (SHEET 3 OF 3)	2	RE-ISSUED FOR REVIEW
1.4	FOUNDATION PLAN AND SECTION FOR PIPE SLEEPERS QADIRPUR PLANT	0504186-CIV-DT-002	2	RE-ISSUED FOR REVIEW
1.5	FOUNDATION PLAN, SECTION & DETAIL FOR ACCESS PLATFORM QADIRPUR PLANT	0504186-CIV-DT-003	1	ISSUED FOR REVIEW
1.6	FOUNDATION PLAN, SECTION & DETAIL FOR INLET & OUTLET SKIDM, DRAIN VALVE SKID & FILTER	0504186-CIV-DT-004 (4 SHEETS)	1	ISSUED FOR REVIEW
1.7	ACCESS PLATFORM STRUCTURE DETAILS	0504186-CIV-ST-001	0	ISSUED FOR REVIEW



OIL & GAS DEVELOPMENT COMPANY LIMITED
INSTALLATION OF FILTER COALESCER FOR
SERIES OPERATION OF PRCP & QICP QADIRPUR GAS FIELD
BILL OF QUANTITIES
FOR PIPE SUPPORT, SLEEPER AND PLATFORM FOUNDATION



DOC. NO. : 0504186-CIV-BOQ-001
 PREP. BY : HA
 REV. : 1
 DATE : 20-Oct-2020

Item No.	PARTICULARS	Qty.	Unit	Rate	Amount in Rs.	REMARKS
1.0	EXCAVATION					
	Excavation for all type of foundations in all kinds of soil, dry or wet, hard or soft, including all operation, complete with site clearance, breaking clods, levelling, dressing, dewatering, disposal, shoring, compacting as per instruction and specification of the consultant and approval of client (Site Engineer). Contractor will carryout compaction test as per specification with out any extra cost.					
1.1	Pipe Support	29.0	m ³			
1.2	Sleeper	3.20	m ³			
1.3	Platform	0.95	m ³			
2.0	PLAIN CEMENT CONCRETE					
	Providing and laying Plain cement concrete of specified strength for blinding work using approved quality 3/4" max. size graded crushed aggregate & fine aggregate of required properties including approved Steel formwork & its removal, all operations of vibrating, levelling, compacting and curing etc. complete as per specification & instruction of the Consultant. Note: 1. SR cement should be used for all works. 2. Mix design for each type of sample will be provided by the Contractor					
2.1	PCC 1:4:8 (1 cement 4 sand and 8 coarse aggregate) C15					
2.1.1	Pipe Support	1.35	m ³			
2.1.2	Sleeper	1.00	m ³			
2.1.3	Platform	0.11	m ³			
3.0	REINFORCED CEMENT CONCRETE					
	Providing and laying Reinforced cement concret shall be developed 28 days cylindrical strength of 3000psi, using approved quality 3/4" max. size graded crushed aggregate & fine aggregate including approved form work & its removal, all operations of vibrating, levelling, compacting and curing etc complete but excluding the cost of steel as per specification & instruction of the Consultant.To confirm the desired cylindrical strength 3000Psi (minimum) at 28days(3+3 minimum at 7 and 28 days) the 6in dia and 12" long cylinder tests will be carried out by contractor from approved laboratory. Note: 1. SR cement should be used for all concrete works. 2. Mix design for each type of sample will be provided by the Contractor					
3.1	Pipe Support	10.0	m ³			
3.2	Sleeper	3.7	m ³			
3.3	Platform	0.74	m ³			
4.0	STEEL REINFORCEMENT					
	Providing and laying hard grade ribbed deformed(min yield strength 60,000 psi) steel reinforcement bars including the cost of straightening, cutting, bending, binding, wastage and such overlaps that are not shown in drawings, placing in position on cement concrete 1:2:4 precast spacer block or m.s chairs,tying with binding wire (GI wire of 18 guage), including cost of chairs and wires etc in all kinds of RCC works. Complete in all respect to the approval of Client (Site Engineer).					
4.1	Pipe Support	1184.0	kg			
4.2	Sleeper	150.00	kg			
4.3	Platform	99.20	kg			
5.0	STEEL EMBEDDED PARTS					
	Providing, fabricating and fixing of steel embedded parts in concrete such as M.S plates, Anchor lugs, Angles, Bolts with double nuts and washer etc. Complete as per drawings, specifications and approval of Client (Site Engineer).					
5.1	Pipe Support	372.0	kg			
5.2	Sleeper	75.0	kg			
5.3	Platform	11.83	kg			



OIL & GAS DEVELOPMENT COMPANY LIMITED
INSTALLATION OF FILTER COALESCER FOR
SERIES OPERATION OF PRCP & QICP QADIRPUR GAS FIELD
BILL OF QUANTITIES
FOR PIPE SUPPORT, SLEEPER AND PLATFORM FOUNDATION



DOC. NO. : 0504186-CIV-BOQ-001
PREP. BY : HA
REV. : 1
DATE : 20-Oct-2020

Item No.	PARTICULARS	Qty.	Unit	Rate	Amount in Rs.	REMARKS
6.0	BITUMEN COATING					
	Supply & Laying 1200 micron thick 10/20 grade of bitumen for foundations after two coat of primer outside foundation upto finished ground level to sides of footings including cost of all material, labour, equipment etc complete as per drawing and specification and as directed by the Engineer Incharge.					
6.1	Pipe Support	60.0	m ²			
6.2	Sleeper	7.00	m ²			
6.3	Platform	7.92	m ²			
7.0	NON-SHRINKAGE GROUT					
	Supply & laying of 25 mm thk. non-shrinkage grout, having minimum compressive strength of 40 N/mm ² of FOSPAK and SIKA or equivalent as approved by client in accordance with the Company specification, as per drawings, instruction and specification of the Consultant and approval of Client (Site Engineer).					
7.1	Pipe Support	2.73	m ²			
7.2	Platform	0.36	m ²			
8.0	STEEL STRUCTURE					
	Supply of all material, fabrication, painting, erection, surface preparation of steel structure etc. Complete in all respect as per drawing, instruction and specification of the Consultant and approval of Client (Site Engineer).					
8.1	ACCESS PLATFORM	1050.0	kg			
8.2	PIPE SUPPORT STRUCTURE	1900.0	kg			
	Total Cost (Including Applicable Taxes)					

NOTE:

i) The Quantities taken in this BOQ are actual without any margin.



OIL & GAS DEVELOPMENT COMPANY LIMITED
INSTALLATION OF FILTER COALESCER FOR
SERIES OPERATION OF PRCP & QICP QADIRPUR GAS FIELD
BILL OF QUANTITIES
FOR INLET,OUTLET,RAIN VALVE & FILTER SEPARATOR FOUNDATION



DOC. NO. : 0504186-CIV-BOQ-002
 PREP. BY : HAK
 REV. : 1
 DATE : 21-Oct-2020

Item No.	PARTICULARS	Qty.	Unit	Rate	Amount in Rs.	REMARKS
1.0	EXCAVATION					
	Excavation for all type of foundations in all kinds of soil, dry or wet, hard or soft, including all operation, complete with site clearance, breaking clods, levelling, dressing, dewatering, disposal, shoring, compacting as per instruction and specification of the consultant and approval of client (Site Engineer). Contractor will carryout compaction test as per specification with out any extra cost.					
1.1	Inlet & Outlet Skid	8.90	m ³			
1.2	Drain Valve Skid	4.40	m ³			
1.3	Filter Separator	50.00	m ³			
2.0	PLAIN CEMENT CONCRETE					
	Providing and laying Plain cement concrete of specified strength for blinding work using approved quality 3/4" max. size graded crushed aggregate & fine aggregate of required properties including approved Steel formwork & its removal, all operations of vibrating, levelling, compacting and curing etc. complete as per specification & instruction of the Consultant. Note: 1. SR cement should be used for all works. 2. Mix design for each type of sample will be provided by the Contractor					
2.1	PCC 1:4:8 (1 cement 4 sand and 8 coarse aggregate)					
2.1.1	Inlet & Outlet Skid	2.50	m ³			
2.1.2	Drain Valve Skid	1.10	m ³			
2.1.3	Filter Separator	3.00	m ³			
2.2	PCC 1:2:4 (1 cement 2 sand and 4 coarse aggregate)					
2.2.1	Stair Block	0.20	m ³			
3.0	REINFORCED CEMENT CONCRETE					
	Providing and laying Reinforced cement concret shall be developed 28 days cylindrical strength of 3000psi, using approved quality 3/4" max. size graded crushed aggregate & fine aggregate including approved form work & its removal, all operations of vibrating, levelling, compacting and curing etc complete but excluding the cost of steel as per specification & instruction of the Consultant.To confirm the desired cylindrical strength 3000Psi (minimum) at 28days(3+3 minimum at 7 and 28 days) the 6in dia and 12" long cylinder tests will be carried out by contractor from approved laboratory. Note: 1. SR cement should be used for all concrete works. 2. Mix design for each type of sample will be provided by the Contractor					
3.1	Inlet & Outlet Skid	8.3	m ³			
3.2	Drain Valve Skid	4.1	m ³			
3.3	Filter Separator	15.20	m ³			
4.0	STEEL REINFORCEMENT					
	Providing and laying hard grade ribbed deformed(min yield strength 60,000 psi) steel reinforcement bars including the cost of straightening, cutting, bending, binding, wastage and such overlaps that are not shown in drawings, placing in position on cement concrete 1:2:4 precast spacer block or m.s chairs,tying with binding wire (GI wire of 18 guage), including cost of chairs and wires etc in all kinds of RCC works. Complete in all respect to the approval of Client (Site Engineer).					
4.1	Inlet & Outlet Skid	595	kg			
4.2	Drain Valve Skid	290	kg			
4.3	Filter Separator	1375	kg			
5.0	STEEL EMBEDDED PARTS					
	Providing, fabricating and fixing of steel embedded parts in concrete such as M.S plates, Anchor lugs, Angles, Bolts with double nuts and washer etc. Complete as per drawings, specifications and approval of Client (Site Engineer).					
5.1	M16 Hilti Bolts	40	Nos			
5.2	M24 Hilti Bolt	8	Nos			
5.3	M12 Hilti Bolts	2	Nos			
5.4	M42 Anchor Bolts	140.0	Kg			
6.0	BITUMEN COATING					
	Supply & Laying 1200 micron thick 10/20 grade of bitumen for founadtions after two coat of primer outside foundation upto finished ground level to sides of footings including cost of all material,labour,equipment etc complete as per drawing and specification and as directed by the Engineer Incharge.					
6.1	Inlet & Outlet Skid	9.36	m ²			
6.2	Drain Valve Skid	4.40	m ²			
6.3	Filter Separator	44.00	m ²			



OIL & GAS DEVELOPMENT COMPANY LIMITED
INSTALLATION OF FILTER COALESCER FOR
SERIES OPERATION OF PRCP & QICP QADIRPUR GAS FIELD
BILL OF QUANTITIES
FOR INLET,OUTLET,RAIN VALVE & FILTER SEPARATOR FOUNDATION



DOC. NO. : 0504186-CIV-BOQ-002
PREP. BY : HAK
REV. : 1
DATE : 21-Oct-2020

Item No.	PARTICULARS	Qty.	Unit	Rate	Amount in Rs.	REMARKS
7.0	NON-SHRINKAGE CEMENTITIOUS GROUT					
	Supply & laying of 25 mm thk. non-shrinkage cementitious grout, having minimum compressive strength of 40 N/mm ² of FOSPAK and SIKA or equivalent as approved by client in accordance with the Company specification, as per drawings, instruction and specification of the Consultant and approval of Client (Site Engineer).					
7.1	Inlet & Outlet Skid	22.42	m ²			
7.2	Drain Valve Skid	11.00	m ²			
7.3	Filter Separator	2.10	m ²			
8.0	ROAD BASE LAYER					
	Providing and laying 2 layers, each having thickness of 200mm, blend of Gravel & fine material, when compacted will form hard surface with high mechanical strength of approved quality as described in drawings, under foundations, filling voids with spawels, consolidating and compacting with mechanical means as per drawings, specifications and instruction of Consultant and approval Client (Site Engineer).					
8.1	Filter Separator	6.00	m ³			
9.0	GRAVEL & COBBLE FILL MATERIAL					
	Providing and laying 200mm thick each layer of Gravel, Cobbles & pebbles size material before laying road base material and filling voids with spawels, consolidating and compacting with mechanical means as per drawings, specifications and instruction of Consultant and approval Client (Site Engineer).					
9.1	Filter Separator	6.00	m ³			
Total Cost (Including Applicable Taxes)						
NOTE: i) The Quantities taken in this BOQ are actual without any margin.						

BILL OF QUANTITIES



OIL & GAS DEVELOPMENT COMPANY LIMITED
INSTALLATION OF FILTER COALESCER FOR
SERIES OPERATION OF PRCP & QICP QADIRPUR GAS FIELD
BILL OF QUANTITIES
FOR INLET,OUTLET,RAIN VALVE & FILTER SEPARATOR FOUNDATION



DOC. NO. : 0504186-CIV-BOQ-002
 PREP. BY : HAK
 REV. : 1
 DATE : 21-Oct-2020

Item No.	PARTICULARS	Qty.	Unit	Rate	Amount in Rs.	REMARKS
1.0	EXCAVATION					
	Excavation for all type of foundations in all kinds of soil, dry or wet, hard or soft, including all operation, complete with site clearance, breaking clods, levelling, dressing, dewatering, disposal, shoring, compacting as per instruction and specification of the consultant and approval of client (Site Engineer). Contractor will carryout compaction test as per specification with out any extra cost.					
1.1	Inlet & Outlet Skid	8.90	m ³			
1.2	Drain Valve Skid	4.40	m ³			
1.3	Filter Separator	50.00	m ³			
2.0	PLAIN CEMENT CONCRETE					
	Providing and laying Plain cement concrete of specified strength for blinding work using approved quality 3/4" max. size graded crushed aggregate & fine aggregate of required properties including approved Steel formwork & its removal, all operations of vibrating, levelling, compacting and curing etc. complete as per specification & instruction of the Consultant. Note: 1. SR cement should be used for all works. 2. Mix design for each type of sample will be provided by the Contractor					
2.1	PCC 1:4:8 (1 cement 4 sand and 8 coarse aggregate)					
2.1.1	Inlet & Outlet Skid	2.50	m ³			
2.1.2	Drain Valve Skid	1.10	m ³			
2.1.3	Filter Separator	3.00	m ³			
2.2	PCC 1:2:4 (1 cement 2 sand and 4 coarse aggregate)					
2.2.1	Stair Block	0.20	m ³			
3.0	REINFORCED CEMENT CONCRETE					
	Providing and laying Reinforced cement concret shall be developed 28 days cylindrical strength of 3000psi, using approved quality 3/4" max. size graded crushed aggregate & fine aggregate including approved form work & its removal, all operations of vibrating, levelling, compacting and curing etc complete but excluding the cost of steel as per specification & instruction of the Consultant.To confirm the desired cylindrical strength 3000Psi (minimum) at 28days(3+3 minimum at 7 and 28 days) the 6in dia and 12" long cylinder tests will be carried out by contractor from approved laboratory. Note: 1. SR cement should be used for all concrete works. 2. Mix design for each type of sample will be provided by the Contractor					
3.1	Inlet & Outlet Skid	8.3	m ³			
3.2	Drain Valve Skid	4.1	m ³			
3.3	Filter Separator	15.20	m ³			
4.0	STEEL REINFORCEMENT					
	Providing and laying hard grade ribbed deformed(min yield strength 60,000 psi) steel reinforcement bars including the cost of straightening, cutting, bending, binding, wastage and such overlaps that are not shown in drawings, placing in position on cement concrete 1:2:4 precast spacer block or m.s chairs,tying with binding wire (GI wire of 18 guage), including cost of chairs and wires etc in all kinds of RCC works. Complete in all respect to the approval of Client (Site Engineer).					
4.1	Inlet & Outlet Skid	595	kg			
4.2	Drain Valve Skid	290	kg			
4.3	Filter Separator	1375	kg			
5.0	STEEL EMBEDDED PARTS					
	Providing, fabricating and fixing of steel embedded parts in concrete such as M.S plates, Anchor lugs, Angles, Bolts with double nuts and washer etc. Complete as per drawings, specifications and approval of Client (Site Engineer).					
5.1	M16 Hilti Bolts	40	Nos			
5.2	M24 Hilti Bolt	8	Nos			
5.3	M12 Hilti Bolts	2	Nos			
5.4	M42 Anchor Bolts	140.0	Kg			
6.0	BITUMEN COATING					
	Supply & Laying 1200 micron thick 10/20 grade of bitumen for founadtions after two coat of primer outside foundation upto finished ground level to sides of footings including cost of all material,labour,equipment etc complete as per drawing and specification and as directed by the Engineer Incharge.					
6.1	Inlet & Outlet Skid	9.36	m ²			
6.2	Drain Valve Skid	4.40	m ²			
6.3	Filter Separator	44.00	m ²			



OIL & GAS DEVELOPMENT COMPANY LIMITED
INSTALLATION OF FILTER COALESCER FOR
SERIES OPERATION OF PRCP & QICP QADIRPUR GAS FIELD
BILL OF QUANTITIES
FOR INLET,OUTLET,RAIN VALVE & FILTER SEPARATOR FOUNDATION



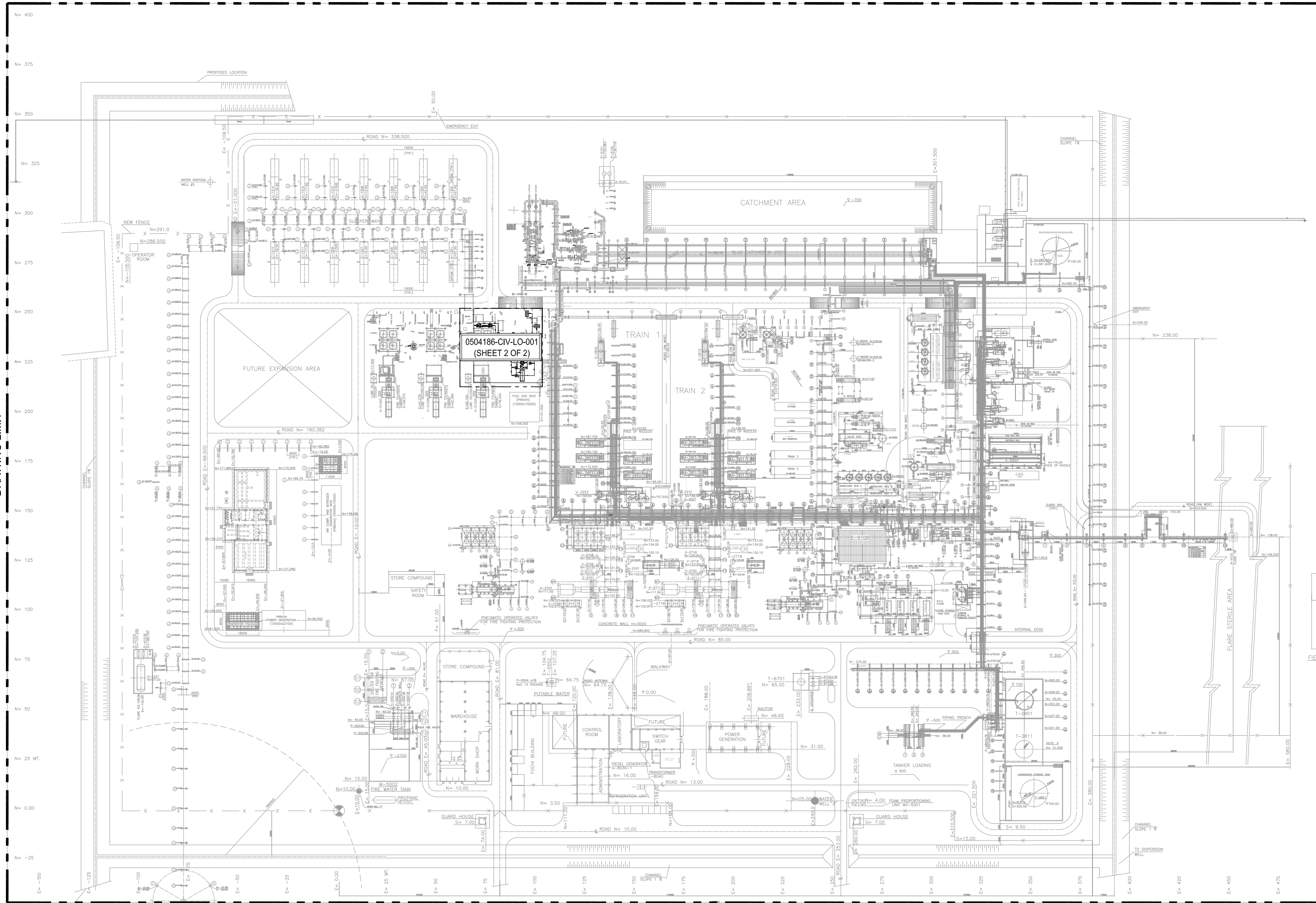
DOC. NO. : 0504186-CIV-BOQ-002
PREP. BY : HAK
REV. : 1
DATE : 21-Oct-2020

Item No.	PARTICULARS	Qty.	Unit	Rate	Amount in Rs.	REMARKS
7.0	NON-SHRINKAGE CEMENTITIOUS GROUT					
	Supply & laying of 25 mm thk. non-shrinkage cementitious grout, having minimum compressive strength of 40 N/mm ² of FOSPAK and SIKA or equivalent as approved by client in accordance with the Company specification, as per drawings, instruction and specification of the Consultant and approval of Client (Site Engineer).					
7.1	Inlet & Outlet Skid	22.42	m ²			
7.2	Drain Valve Skid	11.00	m ²			
7.3	Filter Separator	2.10	m ²			
8.0	ROAD BASE LAYER					
	Providing and laying 2 layers, each having thickness of 200mm, blend of Gravel & fine material, when compacted will form hard surface with high mechanical strength of approved quality as described in drawings, under foundations, filling voids with spawels, consolidating and compacting with mechanical means as per drawings, specifications and instruction of Consultant and approval Client (Site Engineer).					
8.1	Filter Separator	6.00	m ³			
9.0	GRAVEL & COBBLE FILL MATERIAL					
	Providing and laying 200mm thick each layer of Gravel, Cobbles & pebbles size material before laying road base material and filling voids with spawels, consolidating and compacting with mechanical means as per drawings, specifications and instruction of Consultant and approval Client (Site Engineer).					
9.1	Filter Separator	6.00	m ³			
Total Cost (Including Applicable Taxes)						
NOTE: i) The Quantities taken in this BOQ are actual without any margin.						

CIVIL WORKS DRAWING



DRAWING LIMIT



DRAWING LIMIT

NOTE:

1. ALL DIMENSIONS ARE IN mm UNLESS OTHERWISE STATED.
2. ALL DIMENSIONS, ELEVATIONS AND ORIENTATIONS TO BE VERIFIED BY THE CONTRACTOR BEFORE UNDERTAKING ANY KIND OF FABRICATION, CONSTRUCTION AND INSTALLATION.
3. ALL ELEVATIONS, BOP ARE MARKED FROM FGL, ASSUMING LEVEL SURFACE OF FGL, MAINTAIN ALL BOP FROM FGL AT SITE
4. EXCAVATION SHALL BE PERFORMED KEEPING IN VIEW THE UNDERGROUND PIPELINES, CABLES & EXISTING FOUNDATION.

DRAWING LIMIT

2	21-10-2020	RE-ISSUED FOR REVIEW	USA	HAK	
1	11-08-2020	RE-ISSUED FOR REVIEW	ZA	HAK	
0	26-03-2019	ISSUED FOR REVIEW	USA	BA	
REV.	DATE	DESCRIPTION OF REVISION	PREP'D:	CHECK	APPR.

PC PETROCHEMICAL ENGINEERING CONSULTANTS
 C-2, BLOCK NO. 17, GULSHAN-E-IOBAL, NEAR NATIONAL STADIUM, KARACHI-75300, PAKISTAN.
 TEL: +92 (21) 34827780, 34961088, FAX: +92 21 34961089, E-Mail: contact@pec.com.pk web site: www.pec.com.pk

CLIENT : **OIL & GAS DEVELOPMENT COMPANY LIMITED**

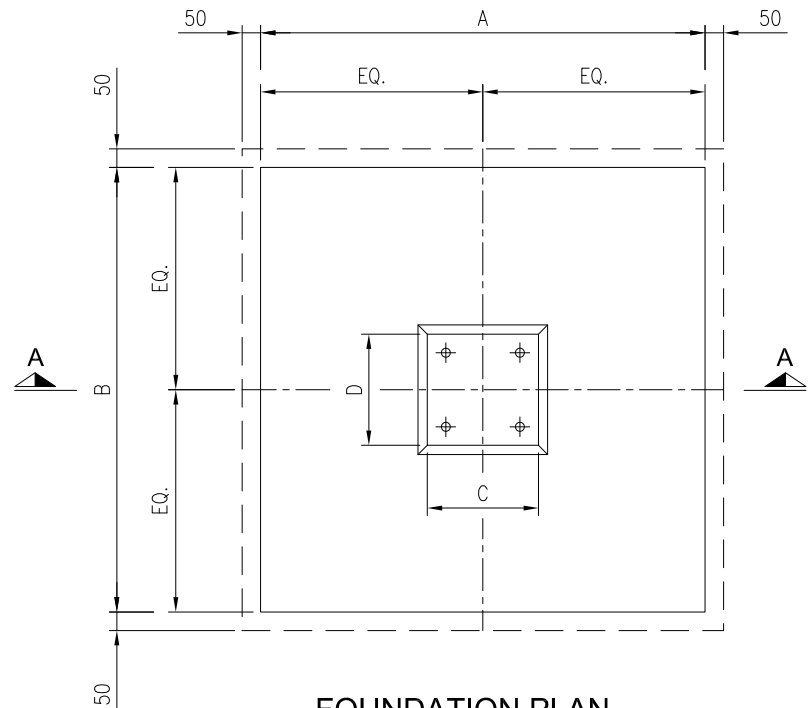
PROJECT : **INSTALLATION OF FILTER COALESCER FOR SERIES OPERATION OF PRCP AND QICP**

TITLE : **QADIRPUR PLANT CIVIL KEY PLAN**

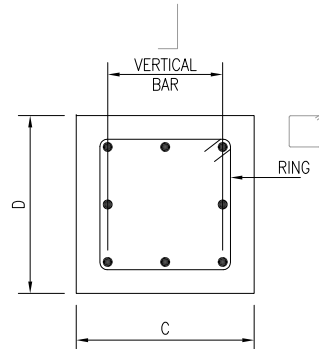
JOB NO	DRAWING NO	SHEET NO	SCALE	SHEET SIZE	REV
0504186	0504186-CIV-LO-001	1 OF 2	1:1600	A2	2

THIS DRAWING AND DESIGN IS THE PROPERTY OF PETROCHEMICAL AND MUST NOT BE COPIED OR PASSED TO ANY THIRD PARTY WITHOUT WRITTEN CONSENT FROM THE PETROCHEMICAL ENGINEERING CONSULTANTS

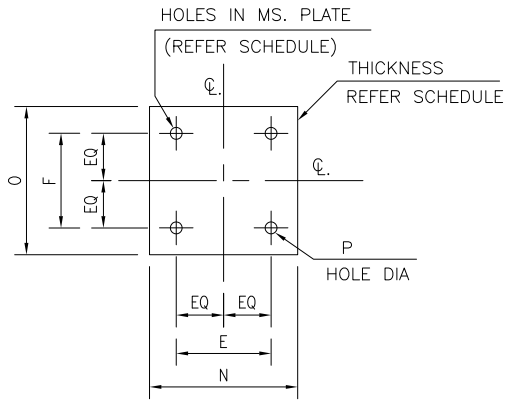
PIPE SUPPORT FOUNDATION											BOLT SIZE			REINFORCEMENT DETAILS				STRUCTURAL DETAIL														
S:NO	TYPES	PS:NO	A	B	C	D	E	F	G	H	I	J	K	SIZE	TOP (B/W)	BOTTOM (B/W)	VERTICAL	RINGS	A1	L	L1	L2	M	M1	M2	N	O	P	Q	THK	T.O.S	X - SECTION
1	TYPE-A	PS-001	1200	1200	450	450	270	270	300	1200	150	300	75	M-20	#4@200 C\C	#4@200 C\C	8-#5	#3@200 C\C	-	598	-	-	860	-	-	400	400	Ø23	-	15mm	748	UC 203x203x46
2	TYPE-A	PS-003	1000	1000	350	350	190	190	300	800	150	300	75	M-20	#4@200 C\C	#4@200 C\C	4-#5	#3@200 C\C	-	8488	-	-	300	-	-	300	300	Ø23	-	15mm	8638	UC 152x152x23
3	TYPE-D	PS-004	1200	1200	450	450	270	270	300	1200	150	300	75	M-20	#4@200 C\C	#4@200 C\C	8-#5	#3@200 C\C	-	598	250	-	860	960	-	400	400	Ø23	-	15mm	748	UC 203x203x46
4	TYPE-B	PS-015	700	700	300	300	140	140	300	800	150	300	75	M-18	#4@200 C\C	#4@200 C\C	4-#5	#3@200 C\C	-	400	-	-	250	-	-	250	250	Ø20	-	12mm	550	L 100x100x10



FOUNDATION PLAN
(SCALE 1:20)



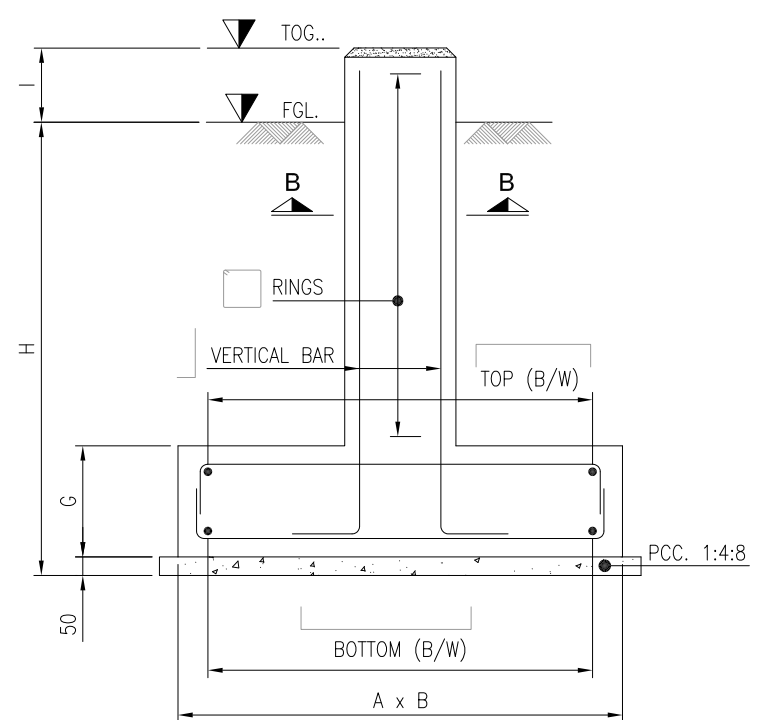
SECTION B-B
(SCALE 1:10)



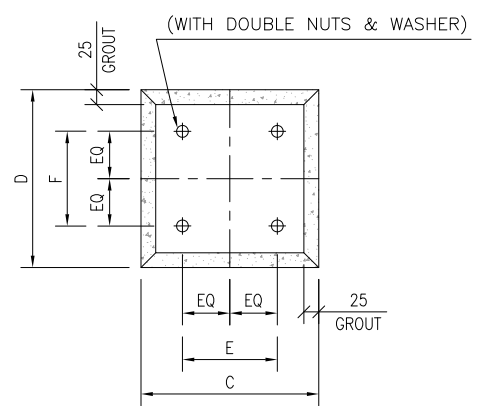
SECTION C-C
(SCALE 1:10)

NOTES:

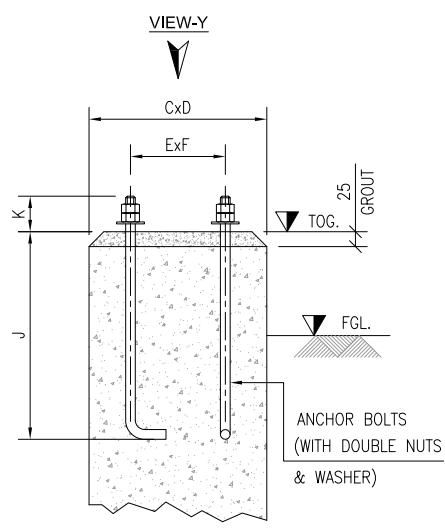
- ALL DIMENSIONS ARE IN MILLIMETERS UNLESS OTHERWISE SPECIFIED.
- EXCAVATION BOTTOM TO BE WELL COMPACTED TO AVOID LATER SETTLEMENT.
- PROVIDE CLEAR CONCRETE COVER AS FOLLOWS:
 - I) FOOTINGS (BOTTOM) : 75mm TO THE MAIN REINF.
 - II) PEDESTAL/COLUMNS (SIDE & TOP) : 40mm TO THE MAIN REINF.
- CONCRETE WORKS:
 - I). LEAN CONCRETE = 1:4:8 CLASS 'E' 1000 PSI FOR BLINDING WORKS
 - II). STRUCTURAL CONCRETE = 1:2:4 CLASS 'C' 3000 PSI FOR BASE SLAB/PEDESTAL
 - III). CONCRETE SHALL DEVELOP 28 DAYS WORK CYLINDER STRENGTH OF 3000 PSI.
 - IV). SULPHATE RESISTANT CEMENT SHALL BE USED FOR ALL CONCRETE WORKS.
- ALL STEEL SHOWN IN THIS DRAWING IS DEFORMED STEEL HAVING YIELD STRENGTH OF 60 KSI.
- USE STEEL FORMWORK FOR ALL CONCRETE WORKS.
- MATERIAL FOR EMBEDDED PLATE SHALL BE ASTM A-36
- LOCATION & BOP LEVELS OF PIPE SUPPORTS SHALL BE VERIFY FROM PIPING PLANS PRIOR TO FABRICATION.
- MATERIAL FOR ANCHOR BOLTS SHALL BE ASTM-A-307 GR.B FOR CAST IN PLACE BOLTS.
- TO MAINTAIN IN THE ELEVATION OF THE PIPES RUNNING IN SLOPE, ADDITIONAL PLATES OR STRUCTURE MEMBERS (ANGLES, CHANNELS) SHOULD BE USED.



SECTION A-A
(SCALE 1:20)



VIEW - Y
(SCALE 1:10)



TYP. BOLT DETAIL
(SCALE 1:10)

1	10-08-2020	RE-ISSUED FOR REVIEW	ZA	HAK	
0	26-03-2019	ISSUED FOR REVIEW	USA	AS	
REV.	DATE	DESCRIPTION OF REVISION	PREP'D:	CHECK	APPR.

PC PETROCHEMICAL ENGINEERING CONSULTANTS
C-2, BLOCK NO. 17, GULSHAN-E-IOBAL, NEAR NATIONAL STADIUM, KARACHI-75300. PAKISTAN.
TEL: +92 (21) 34827780, 34961088, FAX: +92 21 34961089, E-Mail: contact@pcec.com.pk web site: www.pcec.com.pk

CLIENT : **OIL & GAS DEVELOPMENT COMPANY LTD.**

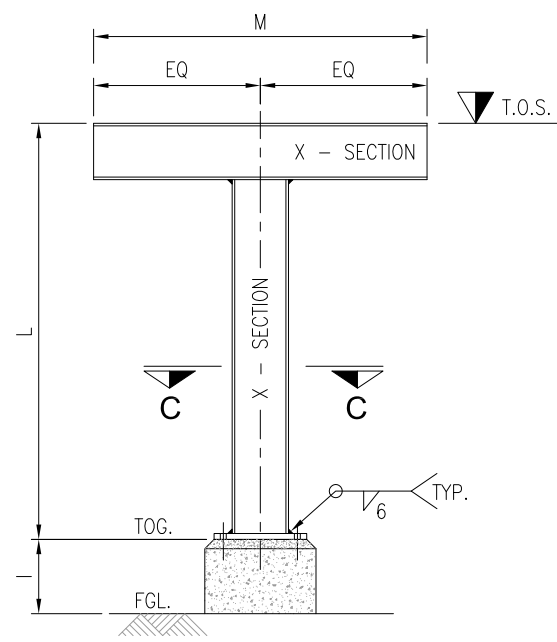
PROJECT : **INSTALLATION OF FILTER COALESCER FOR SERIES OPERATION OF PRCP AND QICP**

TITLE : **QADIRPUR PLANT STEEL STRUCTURE PIPE SUPPORTS FOUNDATION SCHEDULE**

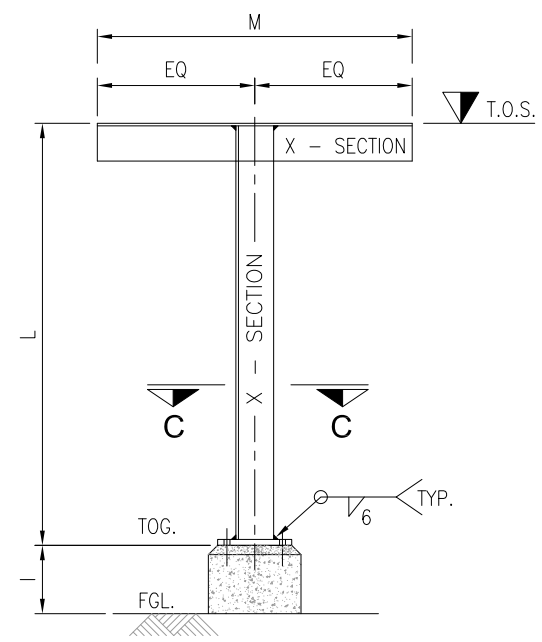
JOB NO	DRAWING NO	SHEET NO	SCALE	SHEET SIZE	REV
0504186	0504186-CIV-DT-001	1 OF 3	AS SHOWN	A3	1

THIS DRAWING AND DESIGN IS THE PROPERTY OF PETROCHEMICAL AND MUST NOT BE COPIED OR PASSED TO ANY THIRD PARTY WITHOUT WRITTEN CONSENT FROM THE PETROCHEMICAL ENGINEERING CONSULTANTS

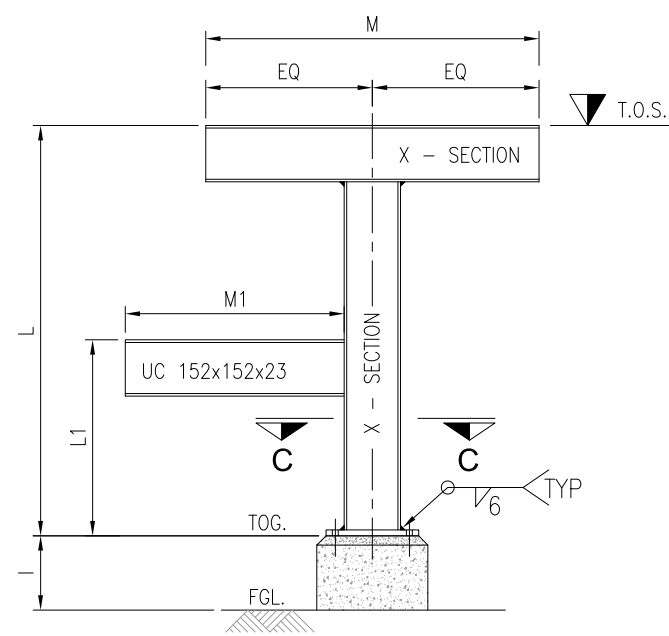
PIPE SUPPORT FOUNDATION											BOLT SIZE			REINFORCEMENT DETAILS				STRUCTURAL DETAIL														
S:NO	TYPES	PS:NO	A	B	C	D	E	F	G	H	I	J	K	SIZE	TOP (B/W)	BOTTOM (B/W)	VERTICAL	RINGS	A1	L	L1	L2	M	M1	M2	N	O	P	Q	THK	T.O.S	X - SECTION
5	TYPE-C	PS-016 TO PS-018	2300	1200	350	350	190	190	300	1200	150	300	75	M-20	#4@200 C\C	#4@200 C\C	4-#5	#3@200 C\C	1250	3050	-	-	1400	-	-	300	300	Ø23	-	15mm	3200	UC 152x152x23
6	TYPE-A	PS-019	1200	1200	450	450	270	270	300	1200	150	300	75	M-20	#4@200 C\C	#4@200 C\C	8-#5	#3@200 C\C	-	598	-	-	860	-	-	400	400	Ø23	-	15mm	748	UC 203x203x46
7	TYPE-A	PS-020	1000	1000	350	350	190	190	300	800	150	300	75	M-20	#4@200 C\C	#4@200 C\C	4-#5	#3@200 C\C	-	8488	-	-	300	-	-	300	300	Ø23	-	15mm	8638	UC 152x152x23
8	TYPE-E	PS-021 & PS-022	1000	1000	350	350	190	190	300	800	150	300	75	M-20	#4@200 C\C	#4@200 C\C	4-#5	#3@200 C\C	-	8488	385	-	300	350	-	300	300	Ø23	-	15mm	8638	UC 152x152x23
9	TYPE-A	PS-024	1200	1200	450	450	270	270	300	1200	150	300	75	M-20	#4@200 C\C	#4@200 C\C	8-#5	#3@200 C\C	-	598	-	-	860	-	-	400	400	Ø23	-	15mm	748	UC 203x203x46
10	TYPE-A	PS-025 & PS-026	1100	1100	450	450	270	270	300	1200	150	300	75	M-20	#4@200 C\C	#4@200 C\C	8-#5	#3@200 C\C	-	598	-	-	860	-	-	400	400	Ø23	-	15mm	748	UC 203x203x46
11	TYPE-A	PS-027	1200	1200	450	450	270	270	300	1200	150	300	75	M-20	#4@200 C\C	#4@200 C\C	8-#5	#3@200 C\C	-	598	-	-	860	-	-	400	400	Ø23	-	15mm	748	UC 203x203x46



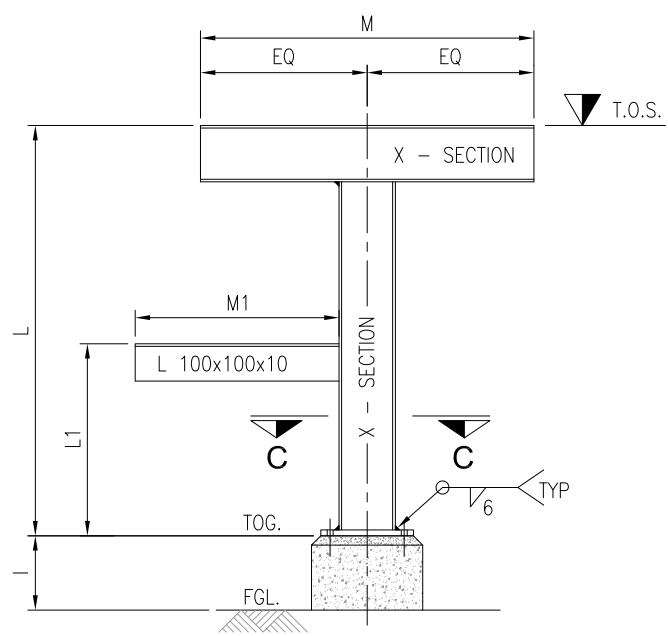
PIPE SUPPORT STRUCTURE
(SCALE 1:20) (TYPE-A)



PIPE SUPPORT STRUCTURE
(SCALE 1:20) (TYPE-B)



PIPE SUPPORT STRUCTURE
(SCALE 1:20) (TYPE-D)



PIPE SUPPORT STRUCTURE
(SCALE 1:20) (TYPE-E)

1	10-08-2020	RE-ISSUED FOR REVIEW	ZA	HAK	
0	26-03-2019	ISSUED FOR REVIEW	USA	AS	
REV.	DATE	DESCRIPTION OF REVISION	PREP'D:	CHECK	APPR.

PC PETROCHEMICAL ENGINEERING CONSULTANTS
C-2, BLOCK NO. 17, GULSHAN-E-IOBAL, NEAR NATIONAL STADIUM, KARACHI-75300. PAKISTAN.
TEL +92 (21) 34827780, 34961088, FAX: +92 21 34961089, E-Mail: contact@pcec.com.pk web site: www.pcec.com.pk

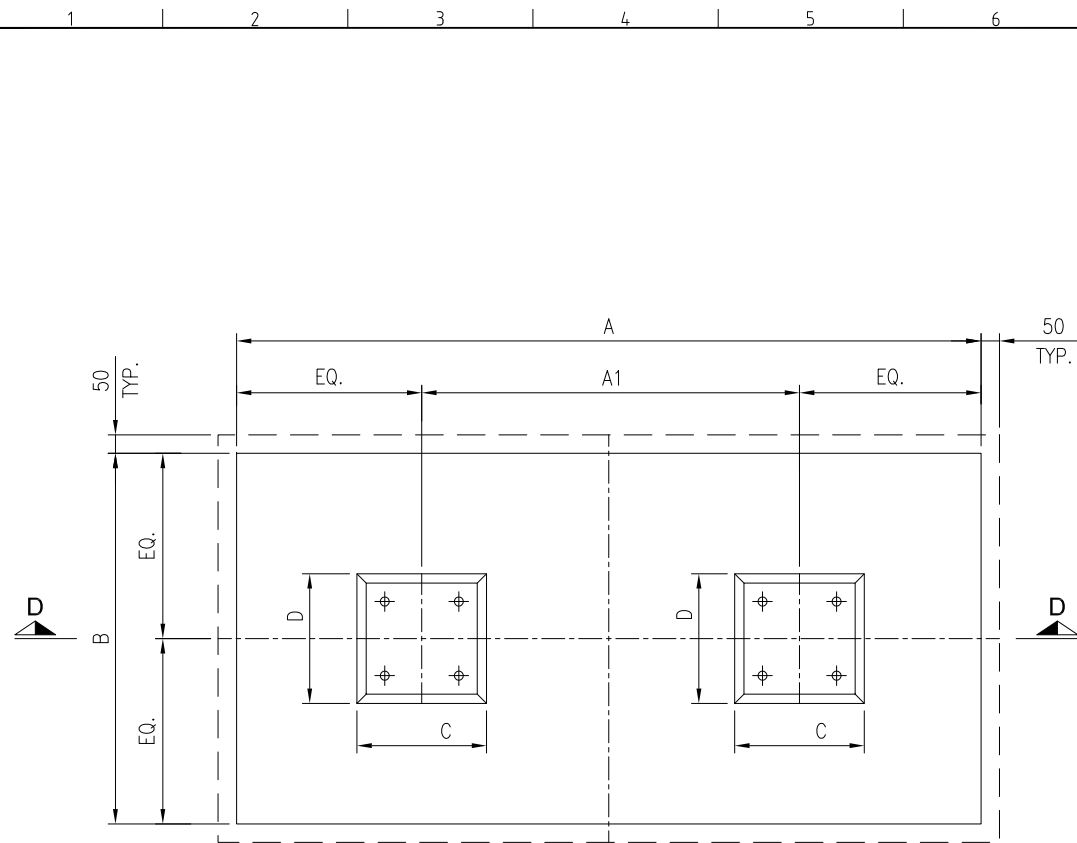
CLIENT : **OIL & GAS DEVELOPMENT COMPANY LTD.**

PROJECT : **INSTALLATION OF FILTER COALESCER FOR SERIES OPERATION OF PRCP AND QICP**

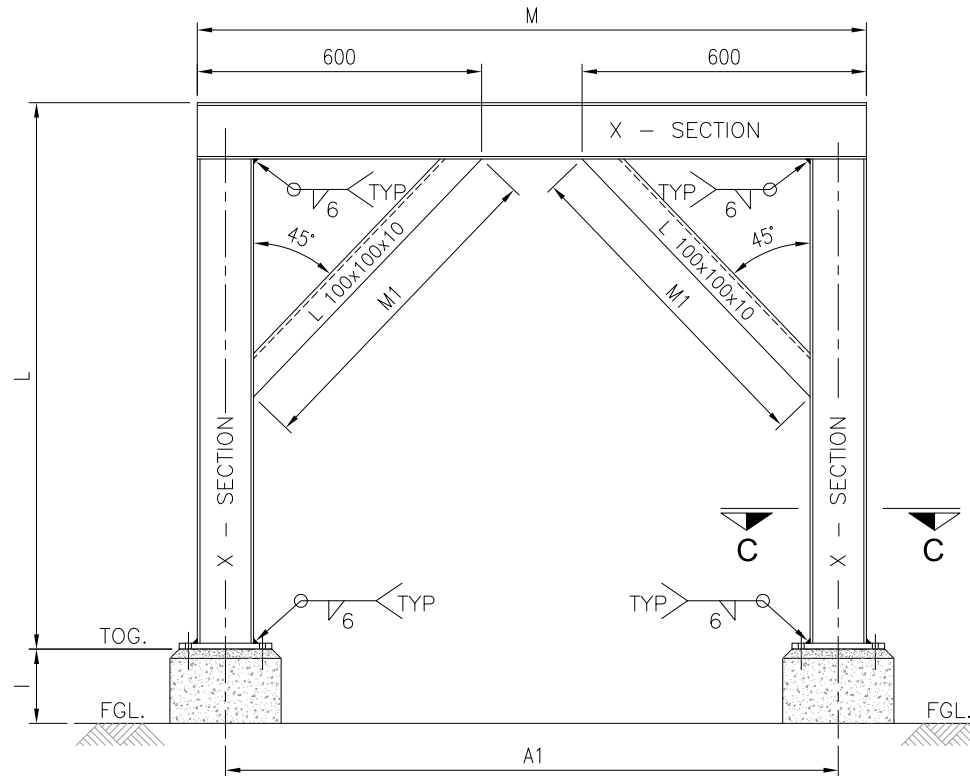
TITLE : **QADIRPUR PLANT
STEEL STRUCTURE PIPE SUPPORTS
FOUNDATION SCHEDULE**

JOB NO	DRAWING NO	SHEET NO	SCALE	SHEET SIZE	REV
0504186	0504186-CIV-DT-001	2 OF 3	AS SHOWN	A3	1

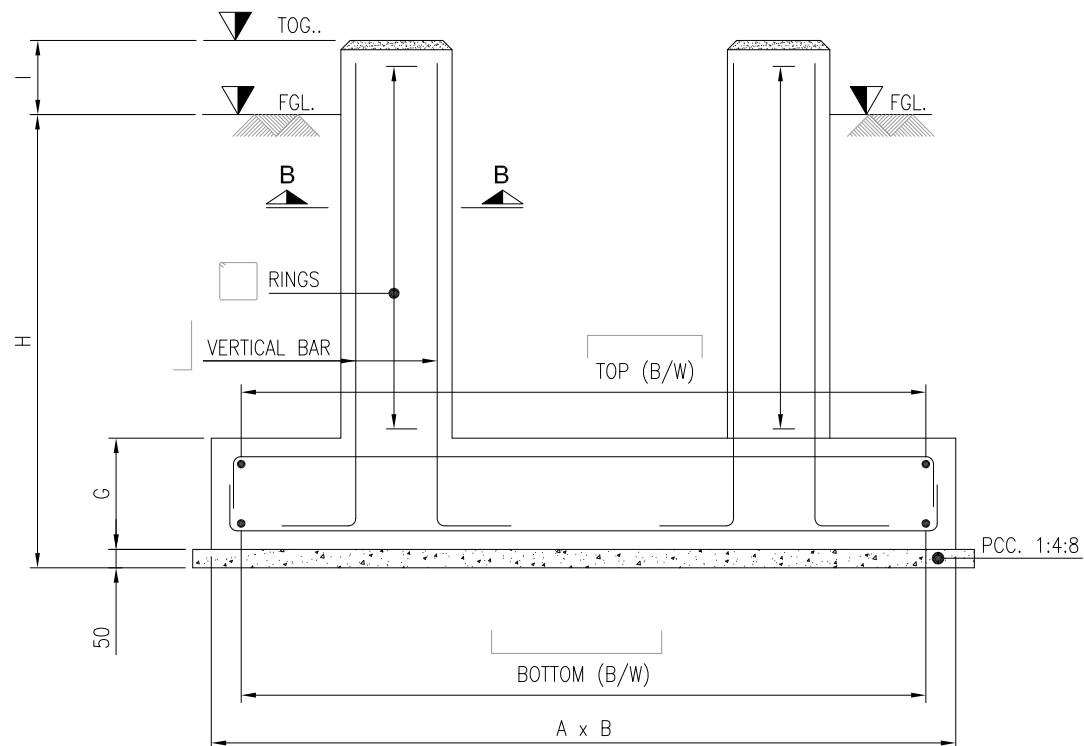
THIS DRAWING AND DESIGN IS THE PROPERTY OF PETROCHEMICAL AND MUST NOT BE COPIED OR PASSED TO ANY THIRD PARTY WITHOUT WRITTEN CONSENT FROM THE PETROCHEMICAL ENGINEERING CONSULTANTS



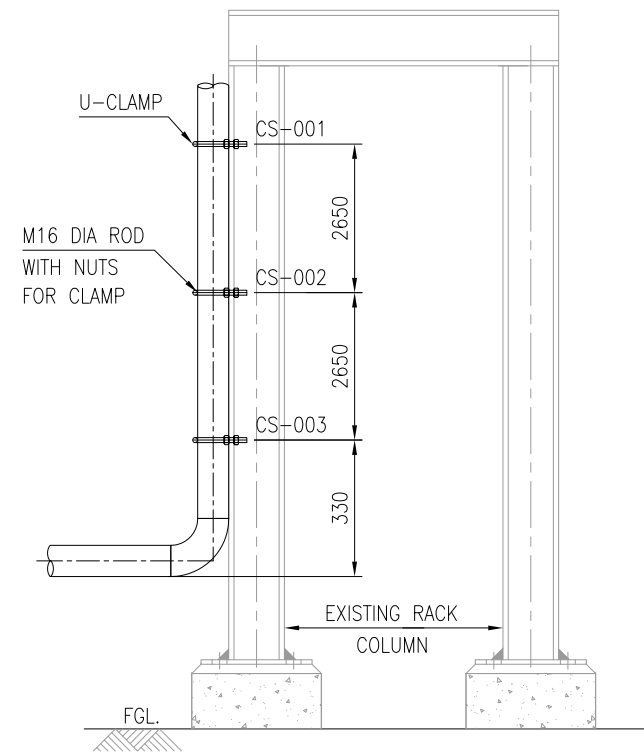
COMBINE FOUNDATION
(SCALE 1:20)



PIPE SUPPORT STRUCTURE
(SCALE 1:20) (TYPE-C)



SECTION D-D
(SCALE 1:20)



PIPE CLAMP SUPPORT
(SCALE 1:20) CLAMP SUPPORT-001 TO 003

1	10-08-2020	RE-ISSUED FOR REVIEW	ZA	HAK	
0	26-03-2019	ISSUED FOR REVIEW	USA	AS	
REV.	DATE	DESCRIPTION OF REVISION	PREP'D:	CHECK	APPR.

PC PETROCHEMICAL ENGINEERING CONSULTANTS
C-2, BLOCK NO. 17, GULSHAN-E-IOBAL, NEAR NATIONAL STADIUM, KARACHI-75300. PAKISTAN.
TEL: +92 (21) 34827780, 34961088, FAX: +92 21 34961089, E-Mail: contact@pcec.com.pk web site: www.pcec.com.pk

CLIENT : **OIL & GAS DEVELOPMENT COMPANY LTD.**

PROJECT : **INSTALLATION OF FILTER COALESCER FOR SERIES OPERATION OF PRCP AND QICP**

TITLE : **QADIRPUR PLANT
STEEL STRUCTURE PIPE SUPPORTS
FOUNDATION SCHEDULE**

JOB NO	DRAWING NO	SHEET NO	SCALE	SHEET SIZE	REV
0504186	0504186-CIV-DT-001	3 OF 3	AS SHOWN	A3	1

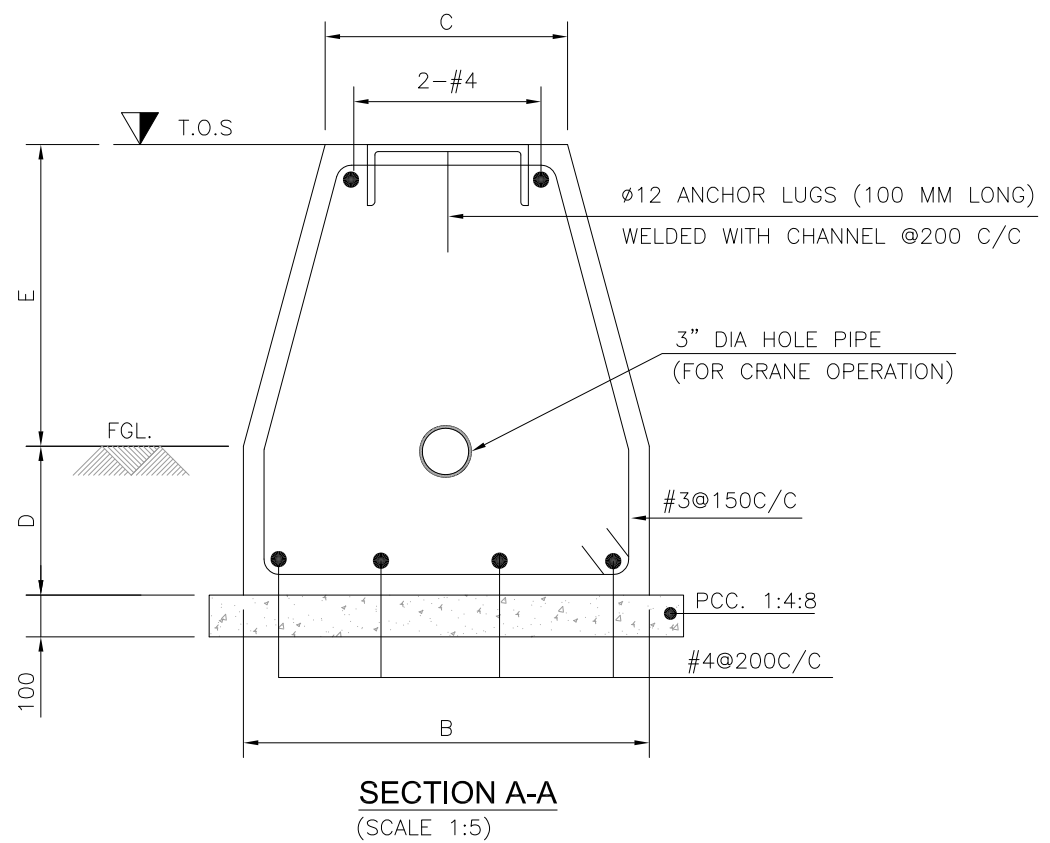
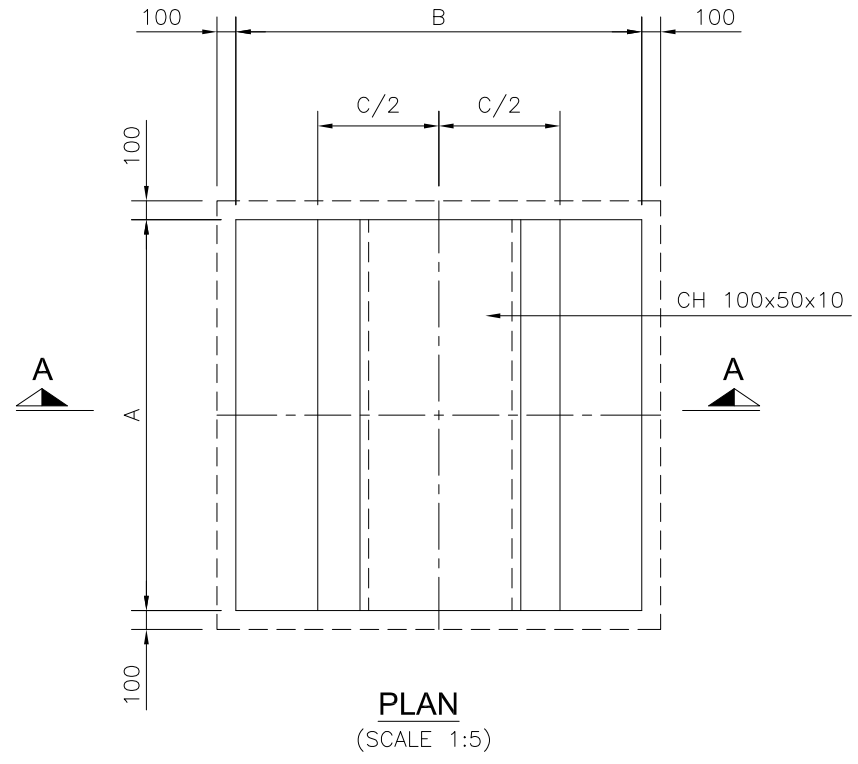
THIS DRAWING AND DESIGN IS THE PROPERTY OF PETROCHEMICAL AND MUST NOT BE COPIED OR PASSED TO ANY THIRD PARTY WITHOUT WRITTEN CONSENT FROM THE PETROCHEMICAL ENGINEERING CONSULTANTS

1 2 3 4 5 6 7 8 9 10 11 12 13 14 15 16

A
B
C
D
E
F
G
H
I
J
K

PIPE SUPPORT FOUNDATION

S:NO	PS:NO	T.O.S	A	B	C	D	E
01	PS-006 & PS-007	400	1200	1000	350	400	400
02	PS-008 TO PS-010	400	500	500	250	200	400
03	PS-011 & PS-012	400	1200	1000	350	400	400
04	PS-023	400	500	500	250	200	400
05	PS-028	400	500	500	250	200	400



NOTES:

- ALL DIMENSIONS ARE IN MM UNLESS OTHERWISE STATED.
- PROVIDE CLEAR CONCRETE COVER AS FOLLOWS.
SLEEPER : 75mm TO THE MAIN REINF.
- CONCRETE WORKS:**
 - LEAN CONCRETE = 1:4:8 CLASS 'E' 1000 PSI FOR BLINDING WORKS
 - STRUCTURAL CONCRETE = 3000 PSI CLASS 'C'
 - CONCRETE SHALL DEVELOP 28 DAYS WORK CYLINDER STRENGTH OF 3000 PSI.
 - SULPHATE RESISTANT CEMENT SHALL BE USED FOR ALL CONCRETE WORKS.
- ALL STEEL SHOWN IN THIS DRAWING IS DEFORMED STEEL HAVING YIELD STRENGTH OF 60 KSI.
- USE STEEL FORMWORK FOR ALL CONCRETE WORKS.
- MATERIAL FOR EMBEDDED PLATE SHALL BE ASTM A-36
- LOCATION OF PIPE SUPPORTS SHALL BE VERIFY FROM PIPING PLANS.
- TO MAINTAIN IN THE ELEVATION OF THE PIPES RUNNING IN SLOPE, ADDITIONAL PLATES, SHOE OR STRUCTURE MEMBERS (ANGLES, CHANNELS) SHOULD BE USED.

REV.	DATE	DESCRIPTION OF REVISION	PREP'D:	CHECK	APPR.
2	20-10-2020	RE-ISSUED FOR REVIEW	ZA	HAK	
1	10-08-2020	RE-ISSUED FOR REVIEW	ZA	HAK	
0	26-03-2019	ISSUED FOR REVIEW	USA	AS	

PG PETROCHEMICAL ENGINEERING CONSULTANTS
C-2, BLOCK NO. 17, GULSHAN-E-IQBAL, NEAR NATIONAL STADIUM, KARACHI-75300. PAKISTAN.
TEL: +92 (21) 34827780, 34961088, FAX: +92 21 34961089, E-Mail: contact@pcec.com.pk web site: www.pcec.com.pk

CLIENT : **OIL & GAS DEVELOPMENT COMPANY LTD.**

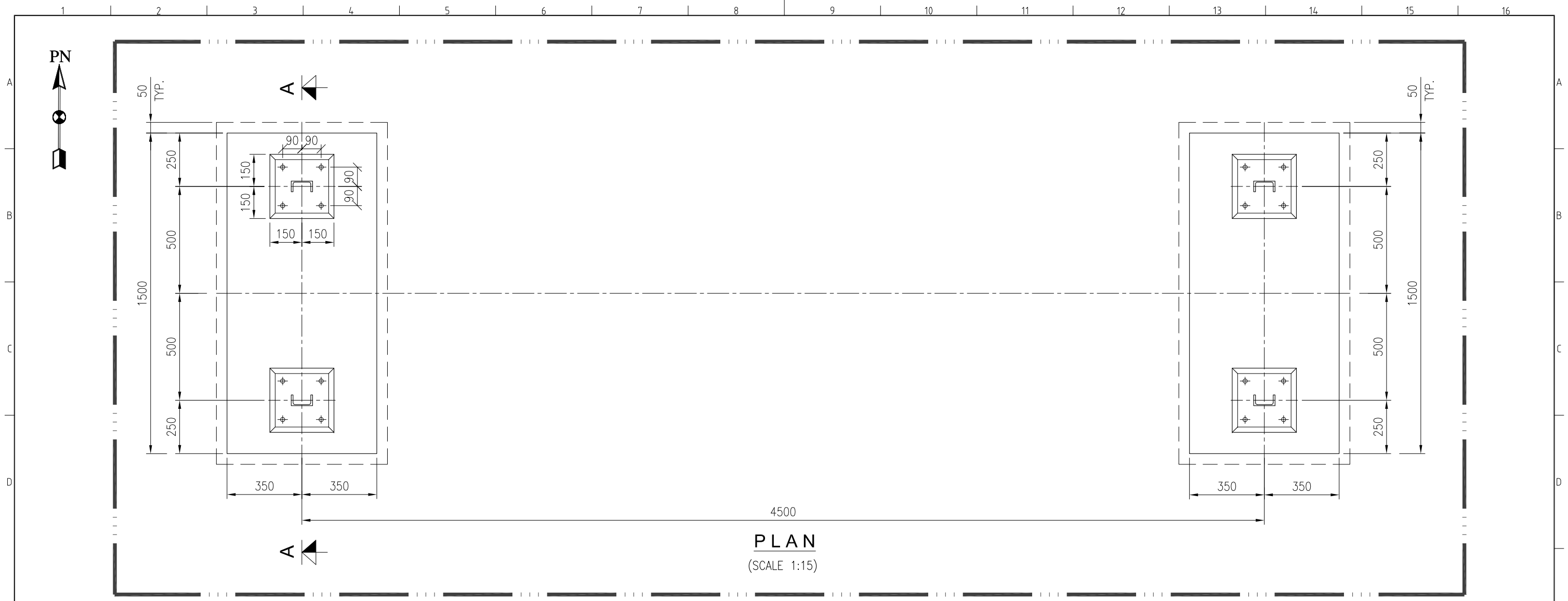
PROJECT : **INSTALLATION OF FILTER COALESCER FOR SERIES OPERATION OF PRCP AND QICP**

TITLE : **QADIRPUR PLANT FOUNDATION PLAN AND SECTION FOR PIPE SLEEPERS**

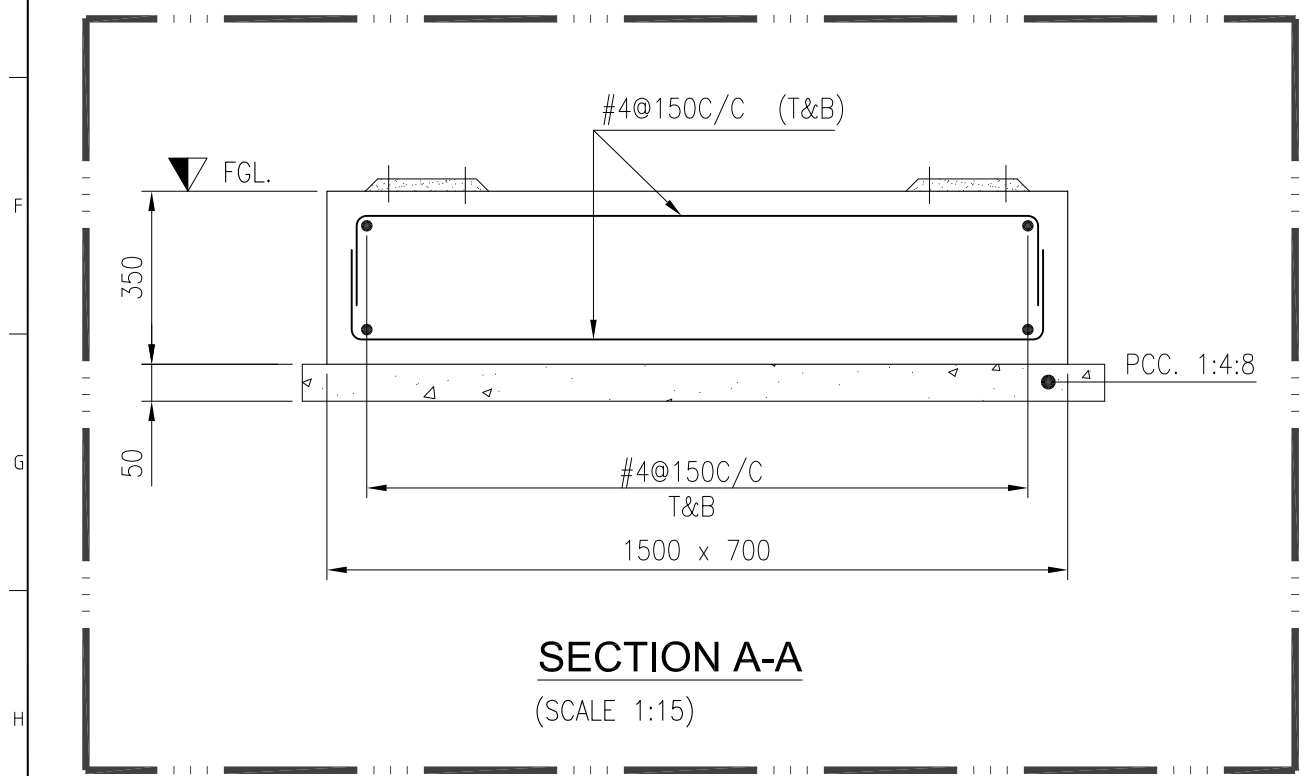
JOB NO	DRAWING NO	SHEET NO	SCALE	SHEET SIZE	REV
0504186	0504186-CIV-DT-002	1 OF 1	AS SHOWN	A3	2

THIS DRAWING AND DESIGN IS THE PROPERTY OF PETROCHEMICAL AND MUST NOT BE COPIED OR PASSED TO ANY THIRD PARTY WITHOUT WRITTEN CONSENT FROM THE PETROCHEMICAL ENGINEERING CONSULTANTS

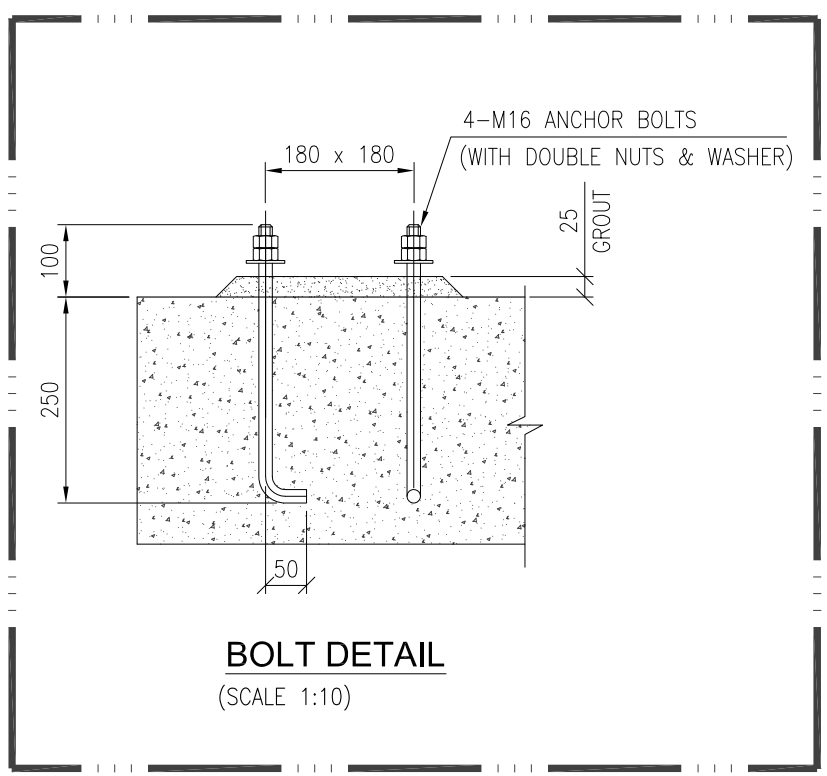
1 2 3 4 5 6 7 8 9 10 11 12 13 14 15 16



PLAN
(SCALE 1:15)



SECTION A-A
(SCALE 1:15)



BOLT DETAIL
(SCALE 1:10)

NOTES:

- ALL DIMENSIONS ARE IN MILLIMETERS UNLESS OTHERWISE SPECIFIED.
- ALL DIMENSIONS AND ORIENTATIONS TO BE VERIFIED BY THE CONTRACTOR BEFORE UNDERTAKING ANY KIND OF CONSTRUCTION WORK AT SITE.

1	20-10-2020	RE-ISSUED FOR REVIEW	USA	AS	
0	26-03-2020	ISSUED FOR REVIEW	USA	AS	
REV.	DATE	DESCRIPTION OF REVISION	PREP'D:	CHECK	APPR.

PC PETROCHEMICAL ENGINEERING CONSULTANTS
C-2, BLOCK NO. 17, GULSHAN-E-IQBAL, NEAR NATIONAL STADIUM, KARACHI-75300. PAKISTAN.
TEL: +92 (21) 34827780, 34961088, FAX: +92 21 34961089, E-Mail: contact@pcec.com.pk web site: www.pcec.com.pk

CLIENT: **OIL & GAS DEVELOPMENT COMPANY LTD.**

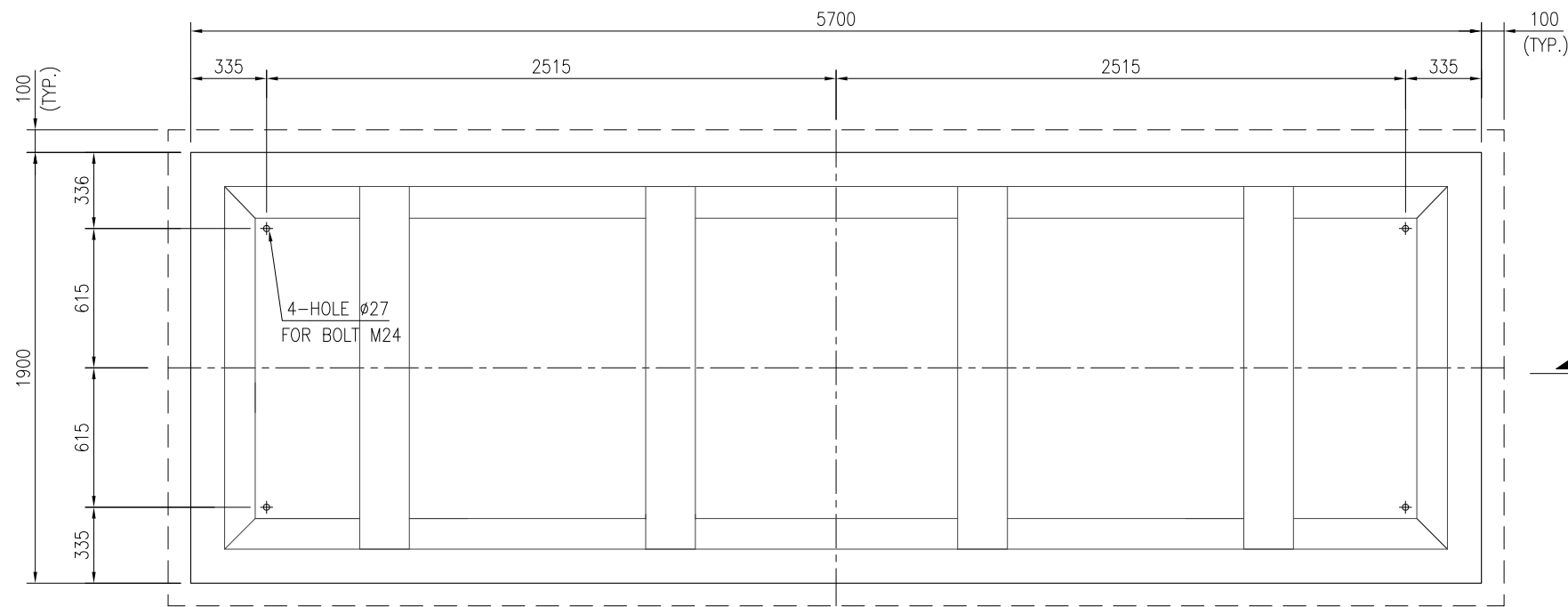
PROJECT: **INSTALLATION OF FILTER COALESCER FOR SERIES OPERATION OF PRCP AND QICP**

TITLE: **QADIRPUR PLANT
FOUNDATION PLAN, SECTION & DETAIL
FOR ACCESS PLATFORM**

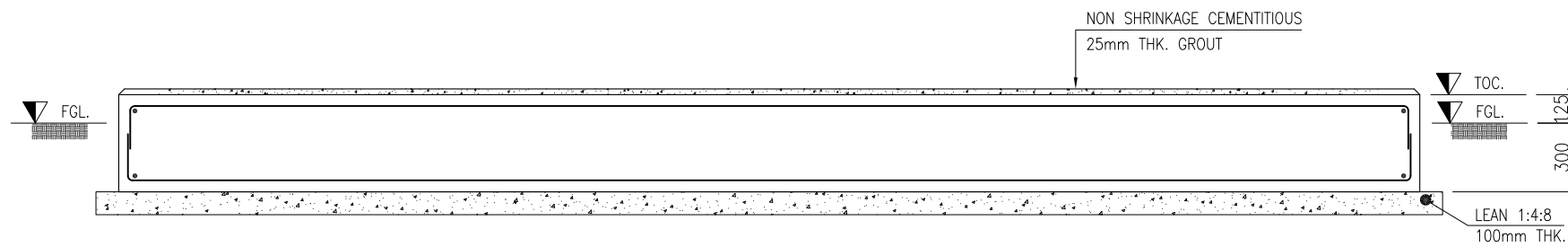
JOB NO	DRAWING NO	SHEET NO	SCALE	SHEET SIZE	REV
0504186	0504186-CIV-DT-003	1 OF 1	AS SHOWN	A3	1

THIS DRAWING AND DESIGN IS THE PROPERTY OF PETROCHEMICAL AND MUST NOT BE COPIED OR PASSED TO ANY THIRD PARTY WITHOUT WRITTEN CONSENT FROM THE PETROCHEMICAL ENGINEERING CONSULTANTS

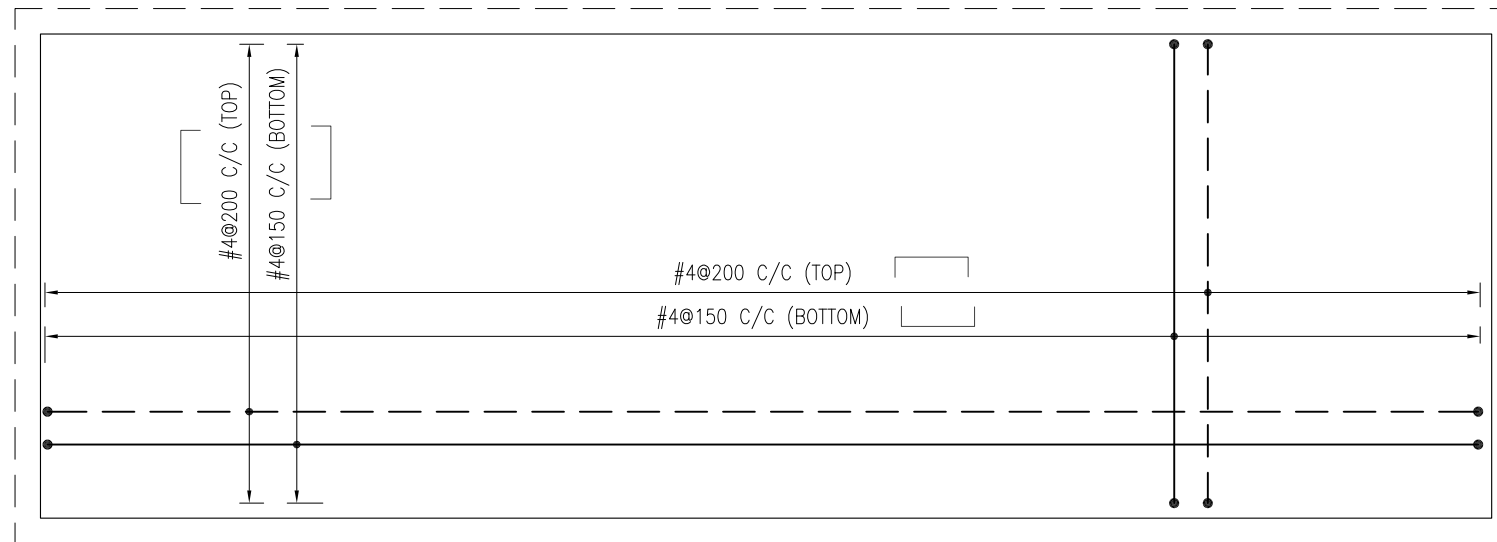
PN



PLAN
(SCALE 1:25)



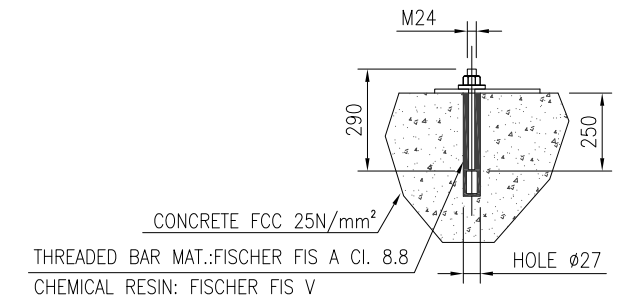
SECTION A-A
(SCALE 1:25)



REINFORCEMENT PLAN
(SCALE 1:25)

NOTES:

1. ALL DIMENSIONS ARE IN MM, UNLESS OTHERWISE NOTED.
2. READ THIS DRAWING ALONG WITH SKID GENERAL ARRANGEMENT DRAWING AND PIPING LAYOUT DRAWING.
3. CONTRACTOR WILL VERIFY ALL THE DIMENSIONS BEFORE EXECUTION OF WORK.
4. SULPHATE RESISTANT CEMENT SHOULD BE USED AND, REINFORCED CONCRETE SHOULD HAVE A 28 DAY CYLINDRICAL STRENGTH OF 3000 PSI.
5. BLINDING CONCRETE SHOULD BE AT LEAST 1:4:8 HAVING CYL. STRENGTH OF 1000 PSI.
6. CONCRETE SHOULD BE MECHANICALLY VIBRATED DURING POURING.
7. DEFORMED BARS HAVING YIELD STRENGTH OF 60,000 PSI CONFORMING TO ASTM A-615 TO BE USED.
8. STAGGERED LAP SHOULD BE PROVIDED. LAP LENGTH SHOULD BE AS FOLLOWS:
a) FOR #4 BAR : 610 mm
9. CONCRETE EXPOSED TO EARTH SURFACE SHOULD BE BITUMEN COATED.
10. PROVIDE 75MM CLEAR COVER TO REINFORCEMENT BARS.
11. ALL COMPACTION LAYERS BELOW FOUNDATION SHOULD BE COMPACTED WITH HEAVY DUTY PLATE COMPACTER AND SHOULD CONFIRM TO MINIMUM 95% MODIFIED PROCTER MODIFIED DENSITY.



TYP. BOLT DETAIL
(SCALE 1:10)

LEGEND:

- FGL. = FINISH GROUND LEVEL
- TOC. = TOP OF CONCRETE
- TOG. = TOP OF GROUT

REV.	DATE	DESCRIPTION OF REVISION	PREP'D.	CHECK	APPR.
1	20-10-2020	RE-ISSUED FOR REVIEW	ZA	HAK	
0	11-08-2020	ISSUED FOR REVIEW	USA	HAK	

PC PETROCHEMICAL ENGINEERING CONSULTANTS
C-2, BLOCK NO. 17, GULSHAN-E-IOBAL, NEAR NATIONAL STADIUM, KARACHI-75300, PAKISTAN.
TEL. +92 (21) 34827780, 34961088, FAX: +92 21 34961089, E-Mail: contact@pcec.com.pk web site: www.pcec.com.pk

CLIENT : **OIL & GAS DEVELOPMENT COMPANY LTD.**

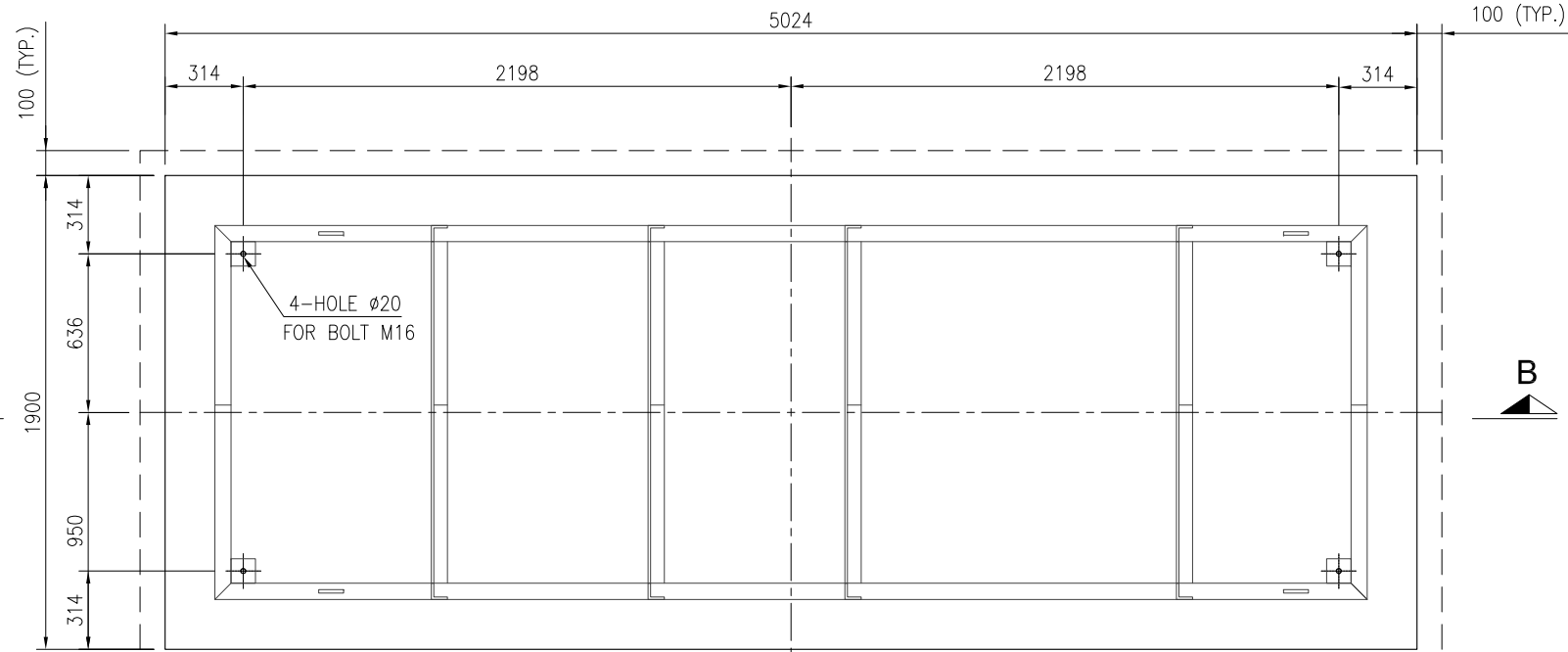
PROJECT : **INSTALLATION OF FILTER COALESCER FOR SERIES OPERATION OF PRCP AND QICP**

TITLE : **FOUNDATION PLAN, SECTION & DETAIL FOR INLET & OUTLET SKID**

JOB NO	DRAWING NO	SHEET NO	SCALE	SHEET SIZE	REV
0504186	0504186-CIV-DT-0004	1 OF 4	AS SHOWN	A3	1

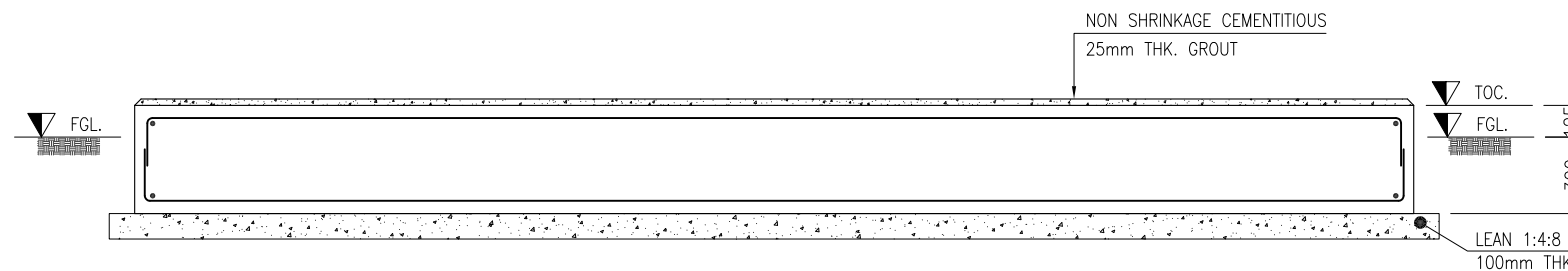
THIS DRAWING AND DESIGN IS THE PROPERTY OF PETROCHEMICAL AND MUST NOT BE COPIED OR PASSED TO ANY THIRD PARTY WITHOUT WRITTEN CONSENT FROM THE PETROCHEMICAL ENGINEERING CONSULTANTS

PN



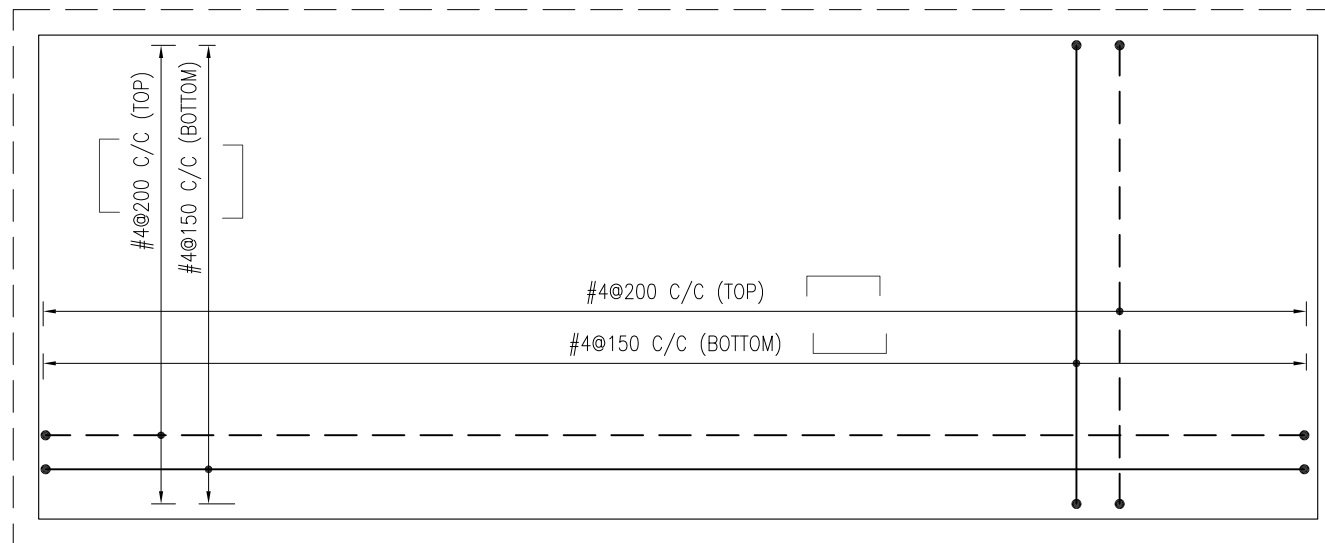
PLAN

(SCALE 1:25)



SECTION B-B

(SCALE 1:25)

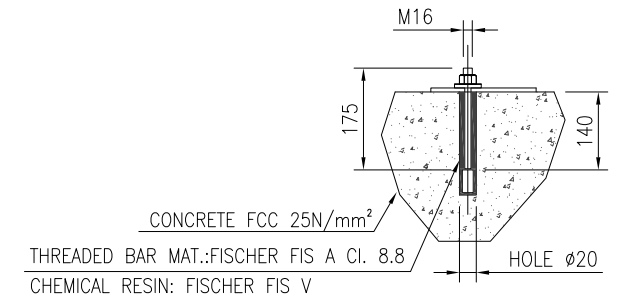


REINFORCEMENT PLAN

(SCALE 1:25)

NOTES:

1. ALL DIMENSIONS ARE IN MM, UNLESS OTHERWISE NOTED.
2. READ THIS DRAWING ALONG WITH SKID GENERAL ARRANGEMENT DRAWING AND PIPING LAYOUT DRAWING.
3. CONTRACTOR WILL VERIFY ALL THE DIMENSIONS BEFORE EXECUTION OF WORK.
4. SULPHATE RESISTANT CEMENT SHOULD BE USED AND, REINFORCED CONCRETE SHOULD HAVE A 28 DAY CYLINDRICAL STRENGTH OF 3000 PSI.
5. BLINDING CONCRETE SHOULD BE AT LEAST 1:4:8 HAVING CYL. STRENGTH OF 1000 PSI.
6. CONCRETE SHOULD BE MECHANICALLY VIBRATED DURING POURING.
7. DEFORMED BARS HAVING YIELD STRENGTH OF 60,000 PSI CONFORMING TO ASTM A-615 TO BE USED.
8. STAGGERED LAP SHOULD BE PROVIDED. LAP LENGTH SHOULD BE AS FOLLOWS:
a) FOR #4 BAR : 610 mm
9. CONCRETE EXPOSED TO EARTH SURFACE SHOULD BE BITUMEN COATED.
10. PROVIDE 75MM CLEAR COVER TO REINFORCEMENT BARS.
11. ALL COMPACTION LAYERS BELOW FOUNDATION SHOULD BE COMPACTED WITH HEAVY DUTY PLATE COMPACTER AND SHOULD CONFIRM TO MINIMUM 95% MODIFIED PROCTER MODIFIED DENSITY.



TYP. BOLT DETAIL

(SCALE 1:10)

LEGEND:

- FGL. = FINISH GROUND LEVEL
- TOC. = TOP OF CONCRETE
- TOG. = TOP OF GROUT

REV.	DATE	DESCRIPTION OF REVISION	PREP'D.	CHECK	APPR.
1	20-10-2020	RE-ISSUED FOR REVIEW	ZA	HAK	
0	11-08-2020	ISSUED FOR REVIEW	USA	HAK	

PC PETROCHEMICAL ENGINEERING CONSULTANTS
 C-2, BLOCK NO. 17, GULSHAN-E-IOBAL, NEAR NATIONAL STADIUM, KARACHI-75300, PAKISTAN.
 TEL. +92 (21) 34827780, 34961088, FAX: +92 21 34961088, E-Mail: contact@pcec.com.pk web site: www.pcec.com.pk

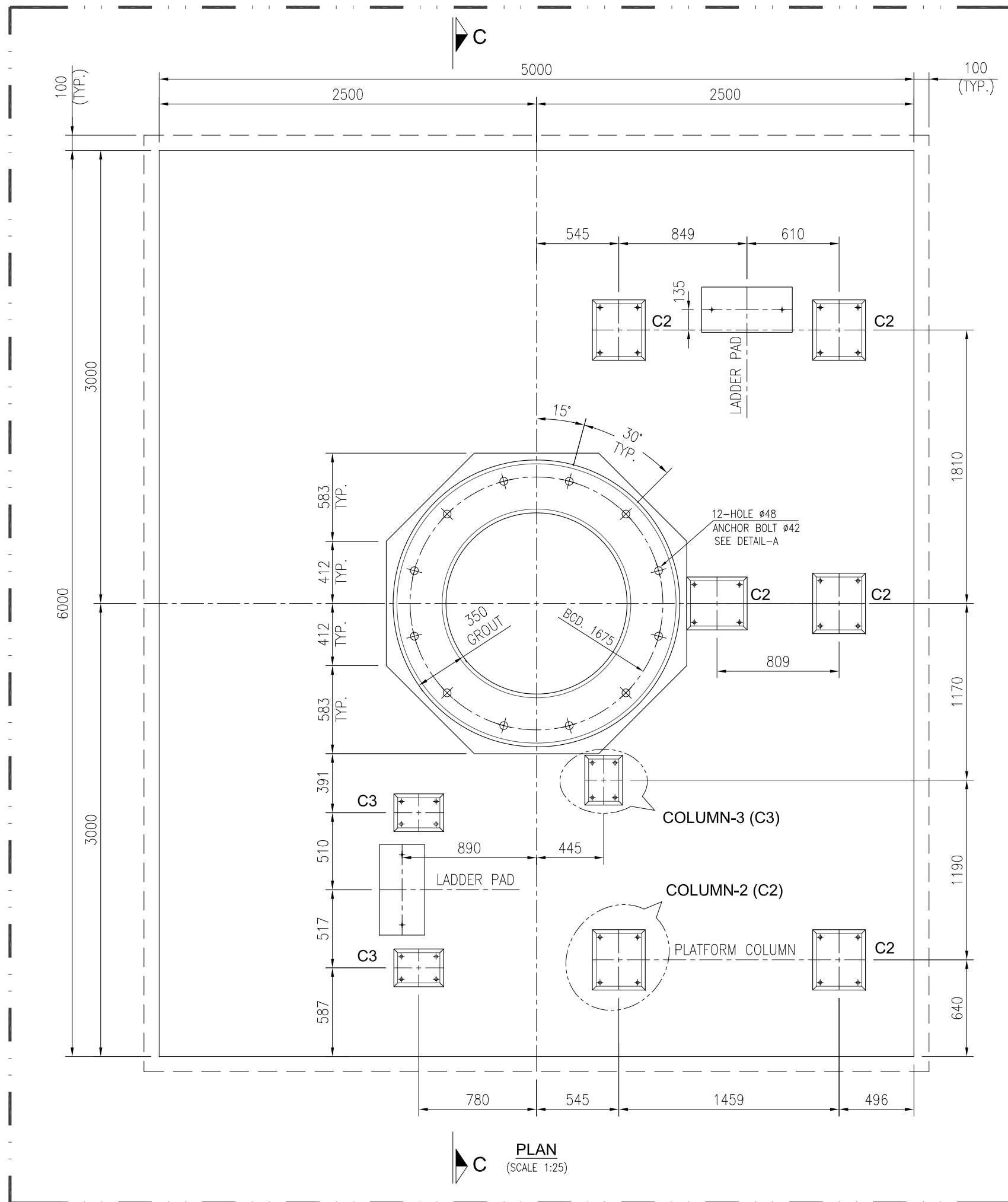
CLIENT : **OIL & GAS DEVELOPMENT COMPANY LTD.**

PROJECT : **INSTALLATION OF FILTER COALESCER FOR SERIES OPERATION OF PRCP AND QICP**

TITLE : **FOUNDATION PLAN, SECTION & DETAIL FOR DRAIN VALVE SKID**

JOB NO	DRAWING NO	SHEET NO	SCALE	SHEET SIZE	REV
0504186	0504186-CIV-DT-0004	2 OF 4	AS SHOWN	A3	1

THIS DRAWING AND DESIGN IS THE PROPERTY OF PETROCHEMICAL AND MUST NOT BE COPIED OR PASSED TO ANY THIRD PARTY WITHOUT WRITTEN CONSENT FROM THE PETROCHEMICAL ENGINEERING CONSULTANTS



PLAN
(SCALE 1:25)

NOTES:

1. ALL DIMENSIONS ARE IN MM, UNLESS OTHERWISE NOTED.
2. READ THIS DRAWING ALONG WITH SKID GENERAL ARRANGEMENT DRAWING AND PIPING LAYOUT DRAWING.
3. CONTRACTOR WILL VERIFY ALL THE DIMENSIONS BEFORE EXECUTION OF WORK.
4. SULPHATE RESISTANT CEMENT SHOULD BE USED AND, REINFORCED CONCRETE SHOULD HAVE A 28 DAY CYLINDRICAL STRENGTH OF 3000 PSI.
5. BLINDING CONCRETE SHOULD BE AT LEAST 1:4:8 HAVING CYL. STRENGTH OF 1000 PSI.
6. CONCRETE SHOULD BE MECHANICALLY VIBRATED DURING POURING.
7. DEFORMED BARS HAVING YIELD STRENGTH OF 60,000 PSI CONFORMING TO ASTM A-615 TO BE USED.
8. STAGGERED LAP SHOULD BE PROVIDED. LAP LENGTH SHOULD BE AS FOLLOWS:
a) FOR #4 BAR : 610 mm
9. CONCRETE EXPOSED TO EARTH SURFACE SHOULD BE BITUMEN COATED.
10. PROVIDE 75MM CLEAR COVER TO REINFORCEMENT BARS.
11. ALL COMPACTION LAYERS BELOW FOUNDATION SHOULD BE COMPACTED WITH HEAVY DUTY PLATE COMPACTOR AND SHOULD CONFIRM TO MINIMUM 95% MODIFIED PROCTER MODIFIED DENSITY.
12. ANCHOR BOLT MATERIAL SHOULD BE F1554 GRADE 36
13. FOR PLATFORM PROVIDE HILTI BOLTS AS PER SITE
14. PROVIDE LAYER OF ROAD BASE MATERIAL OF 200mm THICKNESS EACH, DIRECTLY UNDER THE FOUNDATION.
15. EXCAVATE THE TOP COVER OF VEGETATED AND ORGANIC SOIL FROM EXISTING SOIL (N.G.L) UPTO DEPTH OF 200mm, PLACE 200mm THICK COBBLE/GRAVEL SIZE MATERIAL BELOW THE ROAD BASE LAYER TO THE EXCAVATED LEVEL, THE INTERSTICES OF THE WHOLE SURFACE OF COBBLE/GRAVEL LAYER SHALL BE FILLED WITH SMALLER SIZE STONES (INCLUDING STONE DUST), SO AS TO EFFECTIVELY FILL IN THE VOIDS AND CREVICES WATERED, AND AGAIN THOROUGHLY ROLLED WITH THE SAME ROLLER TO PRODUCE A SMOOTH AND EVEN SURFACE FREE FROM IRREGULARITIES AND TRUE TO LINE AND LEVEL. COBBLE LAYER MUST COMPRISE OF HARD STONE RANGE FROM BOULDERS TO COARSE GRAVEL.

LEGEND:

- FGL. = FINISH GROUND LEVEL
- TOC. = TOP OF CONCRETE
- TOG. = TOP OF GROUT

REV.	DATE	DESCRIPTION OF REVISION	PREP'D.	CHECK	APPR.
1	20-10-2020	RE-ISSUED FOR REVIEW	ZA	HAK	
0	11-08-2020	ISSUED FOR REVIEW	USA	HAK	

PC PETROCHEMICAL ENGINEERING CONSULTANTS
C-2, BLOCK NO. 17, GULSHAN-E-IOBAL, NEAR NATIONAL STADIUM, KARACHI-75300, PAKISTAN.
TEL: +92 (21) 34827780, 34961088, FAX: +92 21 34961089, E-Mail: contact@pcec.com.pk web site: www.pcec.com.pk

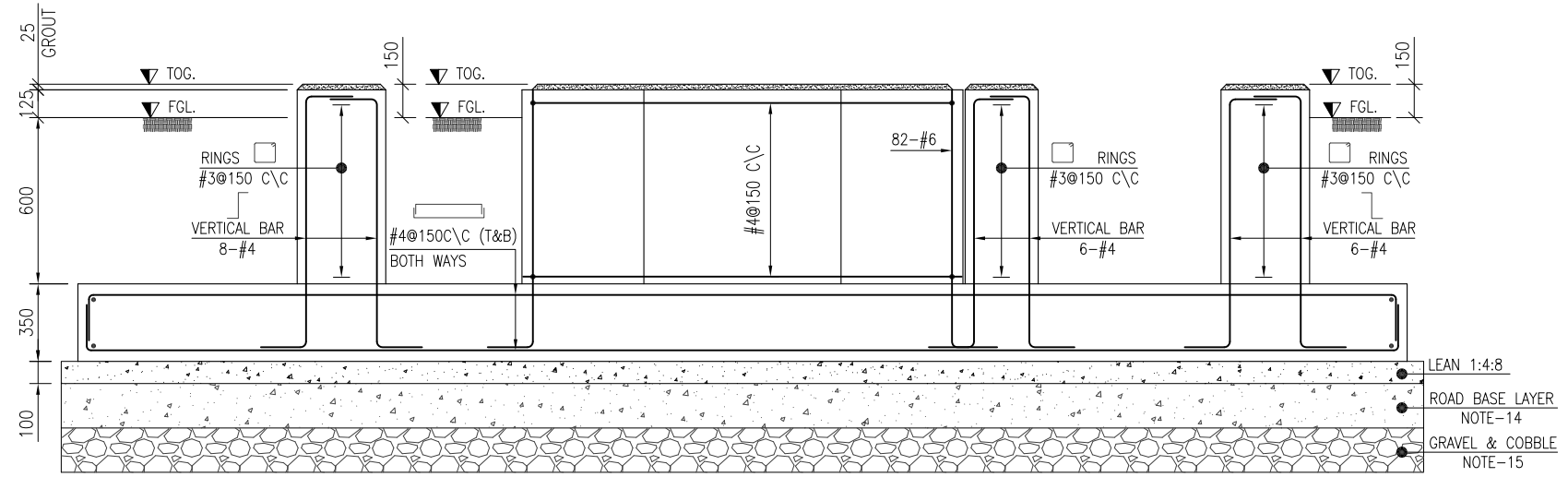
CLIENT :  **OIL & GAS DEVELOPMENT COMPANY LTD.**

PROJECT : **INSTALLATION OF FILTER COALESCER FOR SERIES OPERATION OF PRCP AND QICP**

TITLE : **FOUNDATION PLAN, SECTION & DETAIL FOR FILTER SEPARATOR**

JOB NO	DRAWING NO	SHEET NO	SCALE	SHEET SIZE	REV
0504186	0504186-CIV-DT-0004	3 OF 4	AS SHOWN	A3	1

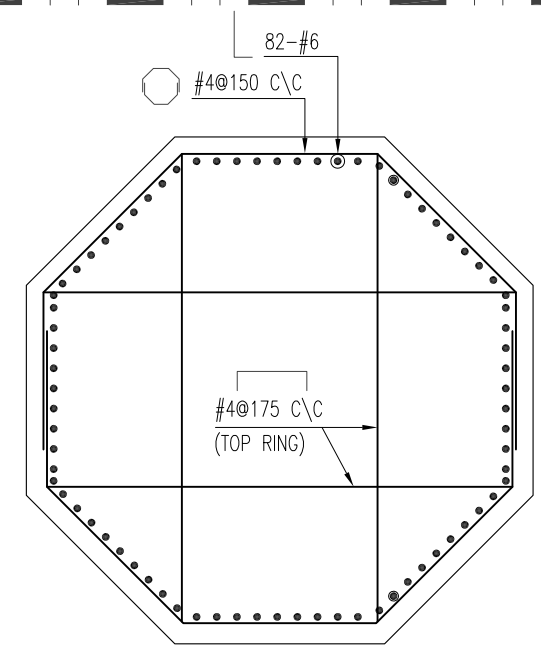
THIS DRAWING AND DESIGN IS THE PROPERTY OF PETROCHEMICAL AND MUST NOT BE COPIED OR PASSED TO ANY THIRD PARTY WITHOUT WRITTEN CONSENT FROM THE PETROCHEMICAL ENGINEERING CONSULTANTS



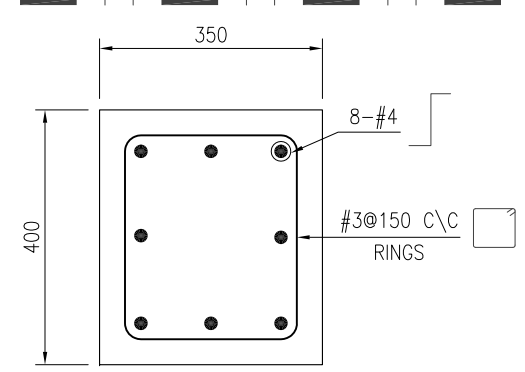
SECTION C-C
(SCALE 1:26)

LEGEND:
FGL. = FINISH GROUND LEVEL
TOC. = TOP OF CONCRETE
TOG. = TOP OF GROUT

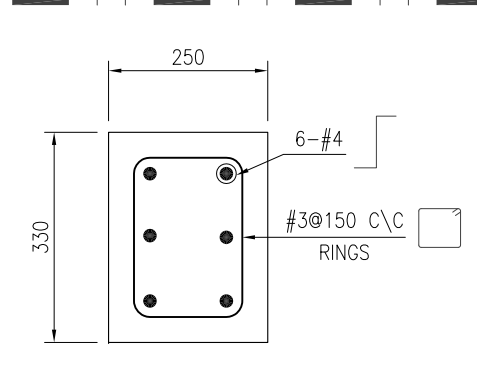
- NOTES:**
- ALL DIMENSIONS ARE IN MM, UNLESS OTHERWISE NOTED.
 - READ THIS DRAWING ALONG WITH SKID GENERAL ARRANGEMENT DRAWING AND PIPING LAYOUT DRAWING.
 - CONTRACTOR WILL VERIFY ALL THE DIMENSIONS BEFORE EXECUTION OF WORK.
 - SULPHATE RESISTANT CEMENT SHOULD BE USED AND, REINFORCED CONCRETE SHOULD HAVE A 28 DAY CYLINDRICAL STRENGTH OF 3000 PSI.
 - BLINDING CONCRETE SHOULD BE AT LEAST 1:4:8 HAVING CYL. STRENGTH OF 1000 PSI.
 - CONCRETE SHOULD BE MECHANICALLY VIBRATED DURING POURING.
 - DEFORMED BARS HAVING YIELD STRENGTH OF 60,000 PSI CONFORMING TO ASTM A-615 TO BE USED.
 - STAGGERED LAP SHOULD BE PROVIDED. LAP LENGTH SHOULD BE AS FOLLOWS:
a) FOR #4 BAR : 610 mm
 - CONCRETE EXPOSED TO EARTH SURFACE SHOULD BE BITUMEN COATED.
 - PROVIDE 75MM CLEAR COVER TO REINFORCEMENT BARS.
 - ALL COMPACTION LAYERS BELOW FOUNDATION SHOULD BE COMPACTED WITH HEAVY DUTY PLATE COMPACTOR AND SHOULD CONFIRM TO MINIMUM 95% MODIFIED PROCTER MODIFIED DENSITY.
 - ANCHOR BOLT MATERIAL SHOULD BE F1554 GRADE 36
 - FOR PLATFORM PROVIDE HILTI BOLTS AS PER SITE
 - PROVIDE LAYER OF ROAD BASE MATERIAL OF 200mm THICKNESS EACH, DIRECTLY UNDER THE FOUNDATION.
 - EXCAVATE THE TOP COVER OF VEGETATED AND ORGANIC SOIL FROM EXISTING SOIL (N.G.L) UPTO DEPTH OF 200mm, PLACE 200mm THICK COBBLE/GRAVEL SIZE MATERIAL BELOW THE ROAD BASE LAYER TO THE EXCAVATED LEVEL, THE INTERSTICES OF THE WHOLE SURFACE OF COBBLE/GRAVEL LAYER SHALL BE FILLED WITH SMALLER SIZE STONES (INCLUDING STONE DUST), SO AS TO EFFECTIVELY FILL IN THE VOIDS AND CREVICES WATERED, AND AGAIN THOROUGHLY ROLLED WITH THE SAME ROLLER TO PRODUCE A SMOOTH AND EVEN SURFACE FREE FROM IRREGULARITIES AND TRUE TO LINE AND LEVEL. COBBLE LAYER MUST COMPRISE OF HARD STONE RANGE FROM BOULDERS TO COARSE GRAVEL.



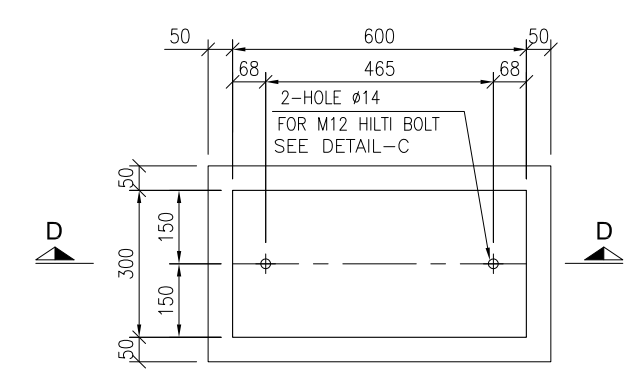
COLUMN-1
COLUMN REINFORCEMENT
(SCALE 1:30)



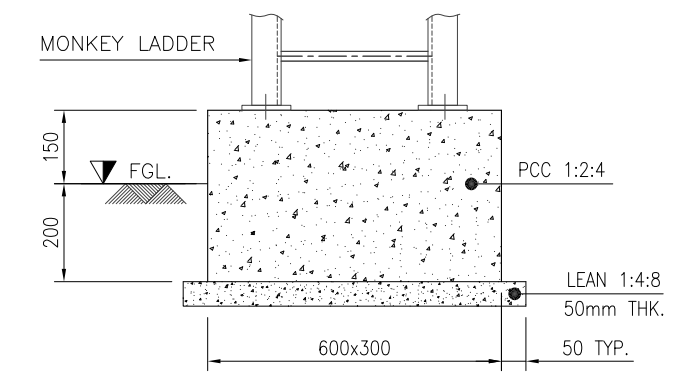
COLUMN-2 (C2)
COLUMN REINFORCEMENT
(SCALE 1:10)



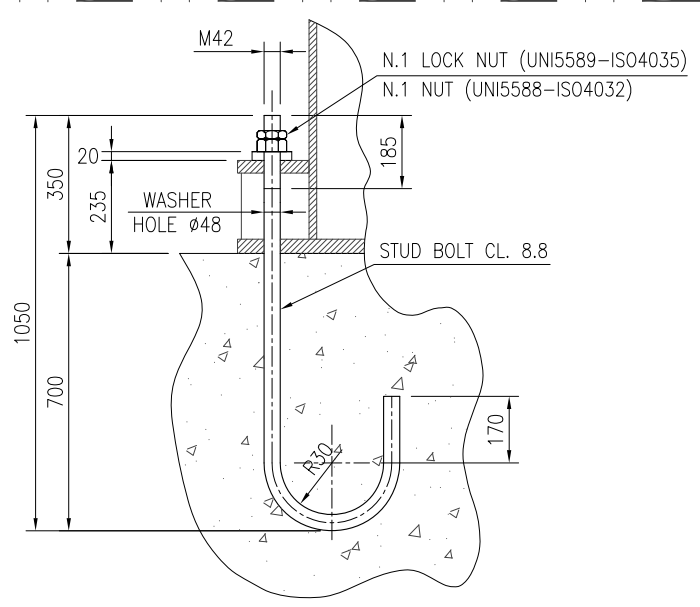
COLUMN-3 (C3)
COLUMN REINFORCEMENT
(SCALE 1:10)



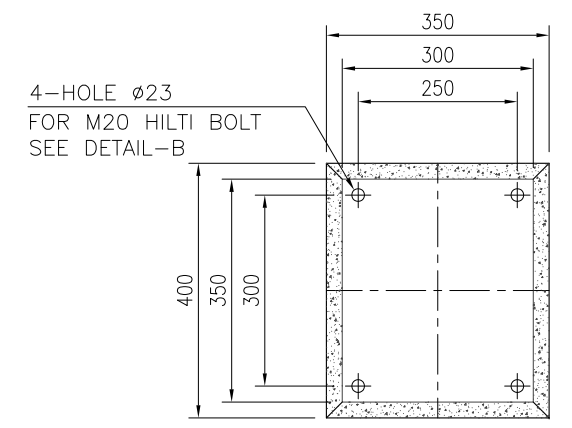
LADDER PAD



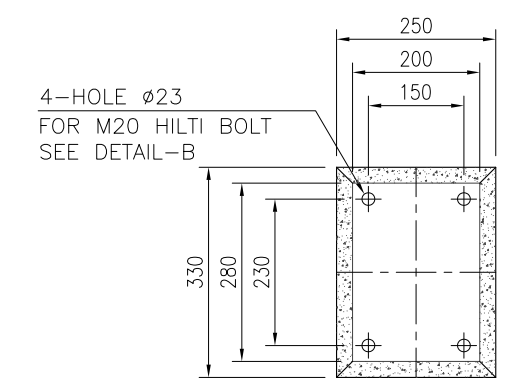
SECTION D-D
SCALE 1:15



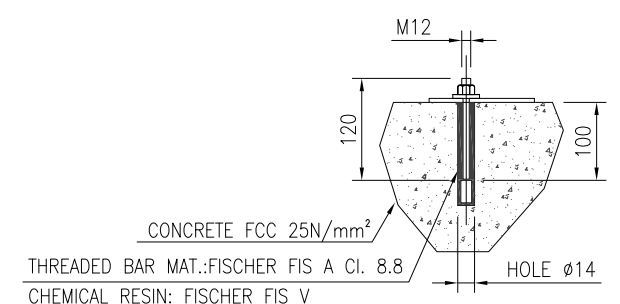
ANCHOR BOLT DETAIL-A
(SCALE 1:10)



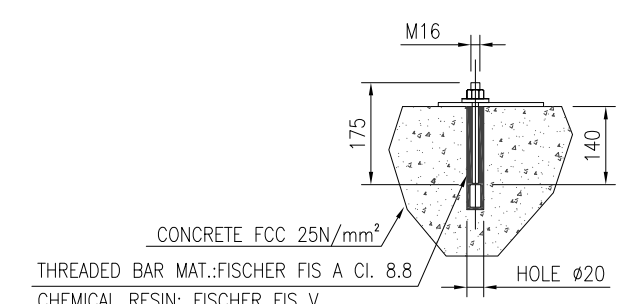
COLUMN-2 (C2)
(SCALE 1:10)



COLUMN-3 (C3)
(SCALE 1:10)



HILTI BOLT DETAIL-C
(SCALE 1:10)



HILTI BOLT DETAIL-B
(SCALE 1:10)

1	21-10-2020	RE-ISSUED FOR REVIEW	ZA	HAK	
0	11-08-2020	ISSUED FOR REVIEW	USA	HAK	
REV.	DATE	DESCRIPTION OF REVISION	PREP'D:	CHECK	APPR.

PC PETROCHEMICAL ENGINEERING CONSULTANTS
C-2, BLOCK NO. 17, GULSHAN-E-IOBAL, NEAR NATIONAL STADIUM, KARACHI-75300, PAKISTAN.
TEL: +92 (21) 34827780, 34961088, FAX: +92 21 34961089, E-Mail: contact@pcec.com.pk web site: www.pcec.com.pk

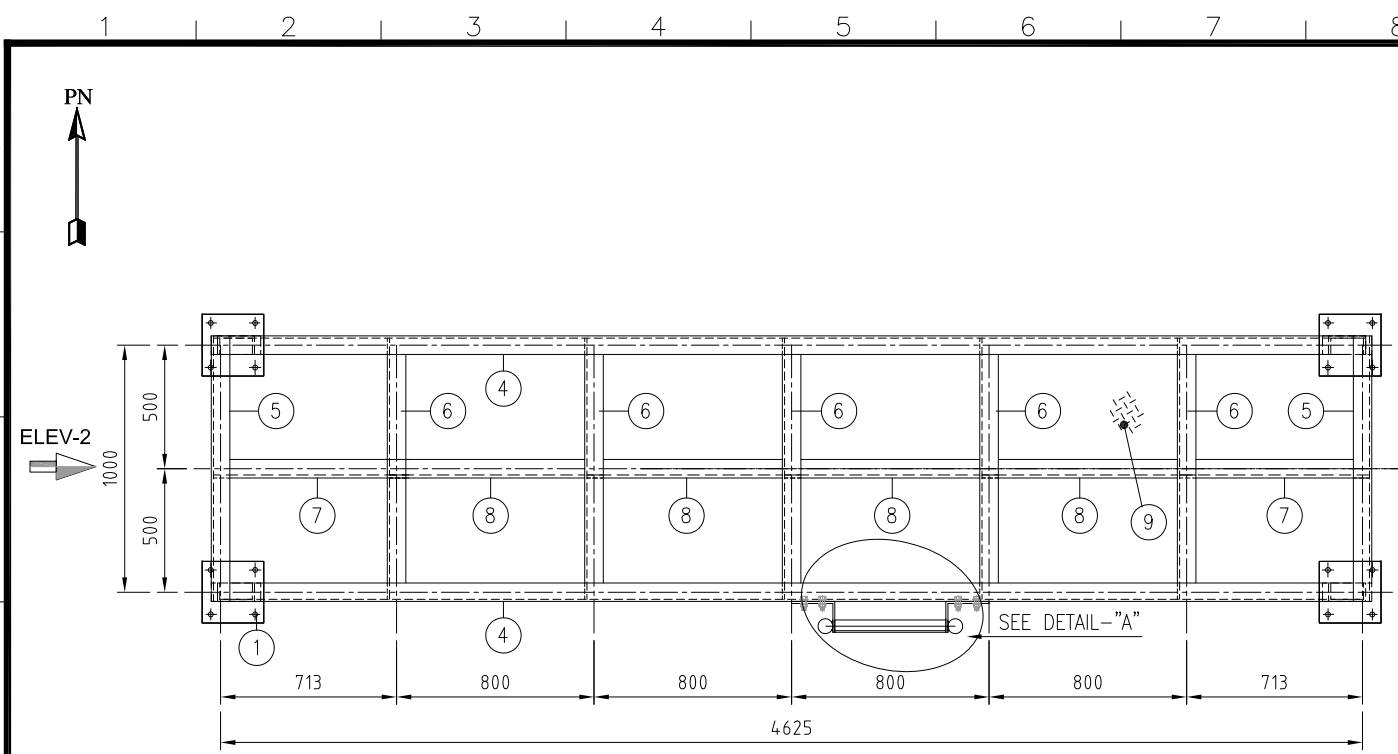
CLIENT : **OIL & GAS DEVELOPMENT COMPANY LTD.**

PROJECT : **INSTALLATION OF FILTER COALESCER FOR SERIES OPERATION OF PRCP AND QICP**

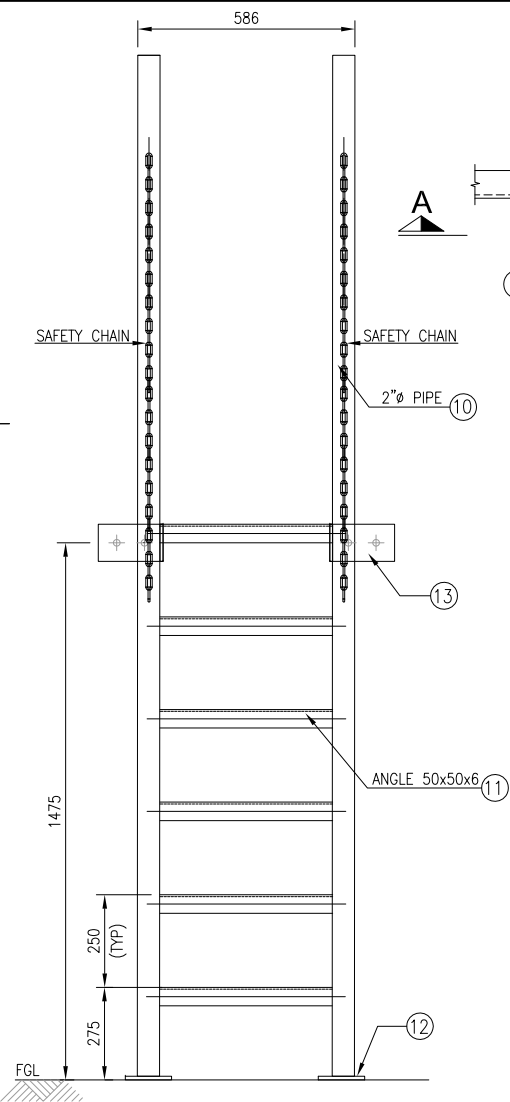
TITLE : **FOUNDATION PLAN, SECTION & DETAIL FOR FILTER**

JOB NO	DRAWING NO	SHEET NO	SCALE	SHEET SIZE	REV
0504186	0504186-CIV-DT-0004	4 OF 4	AS SHOWN	A3	1

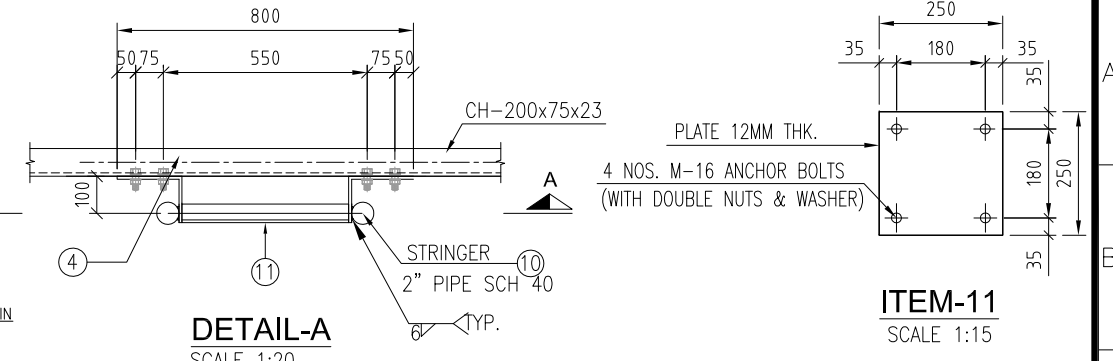
THIS DRAWING AND DESIGN IS THE PROPERTY OF PETROCHEMICAL AND MUST NOT BE COPIED OR PASSED TO ANY THIRD PARTY WITHOUT WRITTEN CONSENT FROM THE PETROCHEMICAL ENGINEERING CONSULTANTS



**ELEV-1
PLAN**
SCALE- 1:30

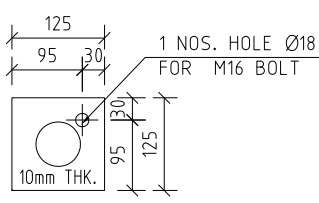
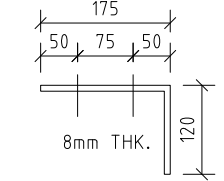
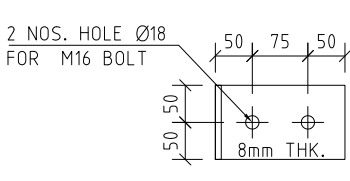


SECTION A-A
SCALE 1:20



DETAIL-A
SCALE 1:20

ITEM-11
SCALE 1:15



ITEM-13
SCALE 1:10

ITEM-12
SCALE 1:10

ITEM	QTY	DESCRIPTION	MATERIAL	UNIT WEIGHT	WEIGHT
14	-	RAILING 2" SCH. STD. (44500 LONG)	ASTM-A36	5.435 Kg/m	242
13	2	REINFORCING PLATE 8mm THK. (21000 AREAm ²)	ASTM A-36	62.8 KG/M ²	6
12	2	BASE PLATE 125x125x10 THK.	ASTM A-36	78.5 KG/M ²	2.5
11	5	L 50x50x6 THK. 465 LONG	ASTM A-36	4.47 KG/M	11
10	2	2" PIPE SCH. 40 (2.7m LONG)	ASTM A-234	5.435 kg/m	29
9	1	CHEQUERED PLATE 4700x1075	ASTM-A36	49.74 Kg/m ²	251
8	4	CH-152x76x17.88 (790 LONG)	ASTM-A36	17.88 Kg/m	57
7	2	CH-152x76x17.88 (705 LONG)	ASTM-A36	17.88 Kg/m	25
6	5	CH-152x76x17.88 (1060 LONG)	ASTM-A36	17.88 Kg/m	95
5	2	CH-152x76x17.88 (1075 LONG)	ASTM-A36	17.88 Kg/m	38
4	2	CH-152x76x17.88 (4700 LONG)	ASTM-A36	17.88 Kg/m	168
3	4	CH-152x76x17.88 (1340 LONG)	ASTM-A36	17.88 Kg/m	96
2	4	TOP PLATE 200x75x10 THK.	ASTM-A36	78.5 Kg/m ²	5
1	4	MS. BASE PLATE 250x250x12 THK.	ASTM-A36	94.2 Kg/m ²	24
				TOTAL WT.(Kg)	1050

NOTES

- ALL DIMENSIONS ARE IN MILLIMETERS UNLESS OTHERWISE SPECIFIED.
- ALL DIMENSIONS AND ORIENTATIONS TO BE VERIFIED BY THE CONTRACTOR BEFORE UNDERTAKING ANY KIND OF CONSTRUCTION WORK AT SITE.

0	26-03-2019	ISSUED FOR REVIEW	USA	AS	
REV.	DATE	DESCRIPTION OF REVISION	PREP'D:	CHECK	APPR.

PC PETROCHEMICAL ENGINEERING CONSULTANTS
C-2, BLOCK NO. 17, GULSHAN-E-IQBAL, NEAR NATIONAL STADIUM, KARACHI-75300. PAKISTAN.
TEL: +92 (21) 34827780, 34961088, FAX: +92 21 34961089, E-Mail: contact@pcec.com.pk web site: www.pcec.com.pk

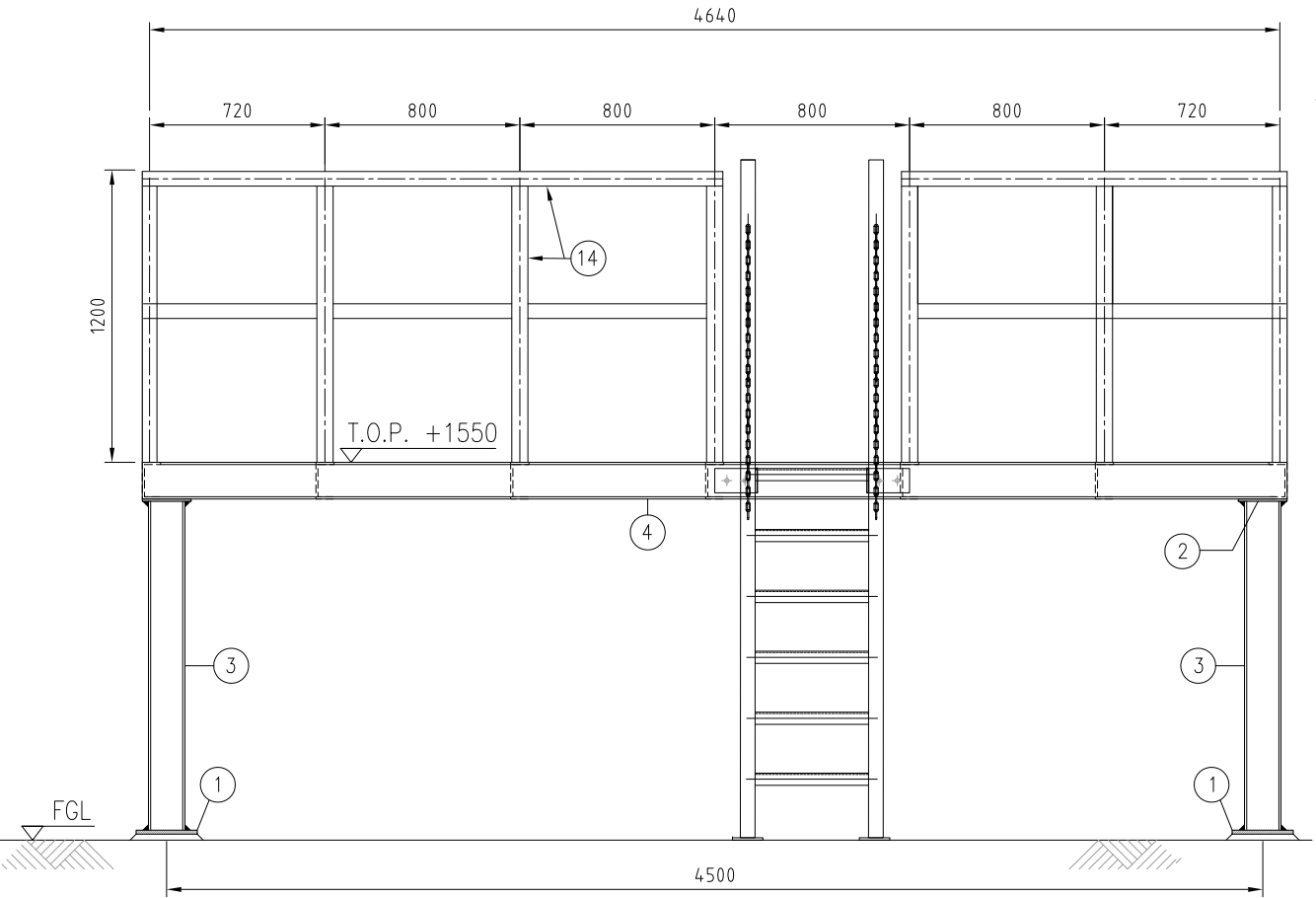
CLIENT : **OIL & GAS DEVELOPMENT COMPANY LTD.**

PROJECT : **INSTALLATION OF FILTER COALESCER FOR SERIES OPERATION OF PRCP AND QICP**

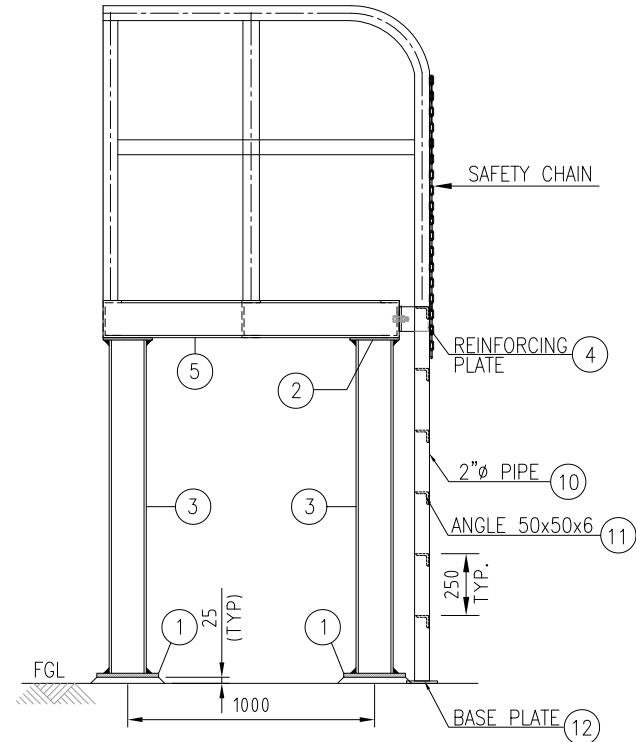
TITLE : **QADIRPUR PLANT ACCESS PLATFORM STRUCTURE DETAILS**

JOB NO	DRAWING NO	SHEET NO	SCALE	SHEET SIZE	REV
0504186	0504186-CIV-ST-001	1 OF 1	AS SHOWN	A3	0

THIS DRAWING AND DESIGN IS THE PROPERTY OF PETROCHEMICAL AND MUST NOT BE COPIED OR PASSED TO ANY THIRD PARTY WITHOUT WRITTEN CONSENT FROM THE PETROCHEMICAL ENGINEERING CONSULTANTS

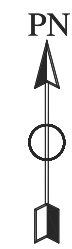


ELEVATION-1
SCALE- 1:30

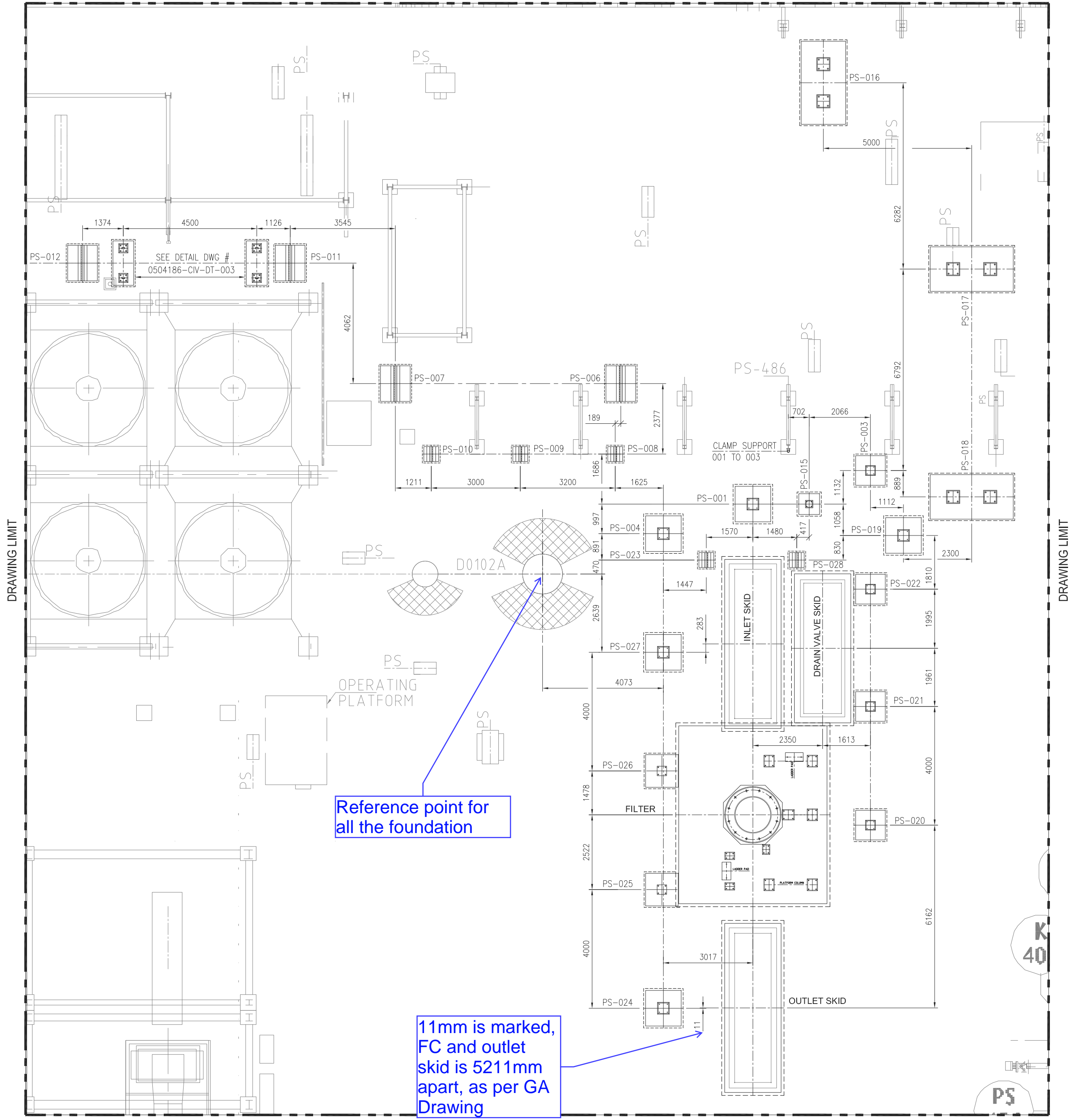


ELEVATION-2
SCALE- 1:30

1 2 3 4 5 6 7 8 9 10 11 12 13 14 15 16



DRAWING LIMIT



DRAWING LIMIT

DRAWING LIMIT

DRAWING LIMIT

NOTE:

1. ALL DIMENSIONS ARE IN mm UNLESS OTHERWISE STATED.
2. ALL DIMENSIONS, ELEVATIONS AND ORIENTATIONS TO BE VERIFIED BY THE CONTRACTOR BEFORE UNDERTAKING ANY KIND OF FABRICATION, CONSTRUCTION AND INSTALLATION.
3. ALL ELEVATIONS, BOP ARE MARKED FROM FGL, ASSUMING LEVEL SURFACE OF FGL, MAINTAIN ALL BOP FROM FGL AT SITE
4. EXCAVATION SHALL BE PERFORMED KEEPING IN VIEW THE UNDERGROUND PIPELINES, CABLES & EXISTING FOUNDATION.

Reference point for all the foundation

11mm is marked, FC and outlet skid is 5211mm apart, as per GA Drawing

REV.	DATE	DESCRIPTION OF REVISION	PREP'D:	CHECK	APPR.
3	18-02-2021	RE-ISSUED FOR REVIEW	USA	HAK	
2	21-10-2020	RE-ISSUED FOR REVIEW	USA	HAK	
1	11-08-2020	RE-ISSUED FOR REVIEW	ZA	HAK	
0	26-03-2019	ISSUED FOR REVIEW	USA	BA	

PC PETROCHEMICAL ENGINEERING CONSULTANTS
 C-2, BLOCK NO. 17, GULSHAN-E-IOBAL, NEAR NATIONAL STADIUM, KARACHI-75300, PAKISTAN.
 TEL: +92 (21) 34827780, 34961088, FAX: +92 21 34961089, E-Mail: contact@pcec.com.pk web site: www.pcec.com.pk

CLIENT : **OIL & GAS DEVELOPMENT COMPANY LIMITED**

PROJECT : **INSTALLATION OF FILTER COALESCER FOR SERIES OPERATION OF PRCP AND QICP**

TITLE : **QADIRPUR PLANT FOUNDATION LOCATION PLAN-1**

JOB NO	DRAWING NO	SHEET NO	SCALE	SHEET SIZE	REV
0504186	0504186-CIV-LO-001	2 OF 2	1:106	A2	3

THIS DRAWING AND DESIGN IS THE PROPERTY OF PETROCHEMICAL AND MUST NOT BE COPIED OR PASSED TO ANY THIRD PARTY WITHOUT WRITTEN CONSENT FROM THE PETROCHEMICAL ENGINEERING CONSULTANTS

1 2 3 4 5 6 7 8 9 10 11 12 13 14 15 16

GENERAL TERMS AND CONDITIONS:

- A. BIDS MUST BE SUBMITTED UNDER TWO ENVELOPES BIDDING SYSTEM i.e. TECHNICAL & FINANCIAL BID SEPARATELY ON DUE DATE.
- B. FINANCIAL BIDS OF ONLY TECHNICALLY RESPONSIVE BIDDERS WILL BE OPENED PUBLICLY.
- C. AFTER TENDER OPENING "TECHNICAL BIDS" WILL BE REVIEWED. THE BIDS WILL BE BROUGHT TECHNICALLY AT PAR BY SEEKING CLARIFICATIONS. THE BIDDERS WILL **NOT** BE ASKED FOR ANY PRICE CHANGE IN THEIR FINANCIAL BIDS DUE TO CERTAIN CLARIFICATIONS AND SUBSEQUENT CHANGE IN THEIR TECHNICAL PROPOSALS. THE BIDDERS WILL **NOT** BE ALLOWED TO SUBMIT SUPPLEMENTARY PRICE PROPOSALS IN A SEPARATE SEALED ENVELOPE TO MAKE IT A PART OF THE ALREADY SUBMITTED UNOPENED FINANCIAL BIDS AND TO ADJUST THEIR QUOTED PRICE SUBSEQUENTLY AFFECTED DUE TO CHANGE IN TECHNICAL PROPOSALS.
- D. SEALED FINANCIAL BIDS OF TECHNICALLY NON-RESPONSIVE BIDDERS WILL BE RETURNED UN-OPENED.
- E. OGDCL RESERVES THE RIGHT TO REJECT ANY OR ALL THE BIDS WITHOUT ASSIGNING ANY REASON.
- F. QUOTED PRICES MUST BE FIRM (INCLUSIVE OF GST, OTHER TAXES, AND DUTIES).
- G. **OGDCL RESERVES THE RIGHT TO EVALUATE THE BID(S) EITHER ITEM-WISED OR FULL PASKAGE BASIS WITHOUT ASSIGNING ANY REASON. TO QOUTE COMPETITIVE PRICES FOR ALL OR ANY ITEMS ENABLE COMPANY TO DECIDE PURCHASE.**
- H. THE MAXIMUM DELIVERY TIME FOR SUPPLY ITEMS IS EIGHT (08) WEEKS FROM THE DATE OF RECEIPT OF FIRM PURCHASE
- I. BIDDERS TO SUBMIT THEIR COMPANY PROFILES, EXPERIENCE OF SIMILAR SUPPLIES IN PAKISTAN ALONG WITH TECHNICAL BIDS

BIDDING FORM (TECHNICAL BID)

Oil & Gas Development Company Limited
Qadirpur Gas Field,
Ghotki, Sindh-Pakistan

Gentlemen,

1. Having examined the Bidding Documents including the specifications, the receipt of which is hereby acknowledged, we the undersigned, offer to supply & deliver «Description» in conformity with drawings, specifications of goods and conditions of Tender Document.
2. We undertake, if our bid is accepted, to commence delivery within _____ days (Please specify days) from the date of receipt of your firm Purchase Order.
3. If our bid is accepted, we will provide the Performance Bond equal to 10% of the Purchase Order excluding GST, for due performance of the purchase order.
4. We agree to abide by all the terms & conditions of the tender for the period of _____ days (*Please specify days*) from the date fixed for receiving the same & it shall remain binding upon us and may be accepted at any time before the expiry of that period or any extension thereof agreed by us.
5. Until a formal Purchase Order is placed, this bid, together with your written acceptance thereof, shall constitute a binding contract between us. We understand that you are not bound to accept the lowest priced or any bid you may receive.

Dated this _____ day of _____ 200_____

(Signature)
(In the capacity of)

Duly authorized to sign Bid for and on behalf of _____

(Signature of Witness)

Name: - _____

Address: - _____

BID SUMMARY SHEET
TENDER NO. (TE/02/QP-PROS/2021)
(TO BE ATTACHED WITH TECHNICAL BID)

1. Bidder Name _____
 - a. Address, Phone & Fax No _____
 - b. E-mail address _____

2. Manufacturer Name & _____
 - a. Country of Origin: _____
 - b. (Where required) _____

3. Items Quoted:(give serial no. only): _____

4. Price Validity: _____

5. Offered Delivery/ Completion Period: _____

6. GST Registration No. _____

7. Bidding Form (Annexure-B Attached with Technical Bid): Yes No

8. Bid Bond Attached with **TECHNICAL** Bid: Yes No

9. Any Deviation: _____

Signature _____

Name & Designation _____

BIDDING FORM (FINANCIAL BID)

**Oil & Gas Development Company Limited
Qadirpur Gas Field,
Ghotki, Sindh-Pakistan**

Gentlemen,

1. Having examined the Bidding Documents including the specifications, the receipt of which is hereby acknowledged, we the undersigned offer to supply & deliver «Description» in conformity with drawings, specifications of goods and conditions of Tender for the sum of Rs. _____ (Total bid amount in words) (inclusive of all taxes) or such other sum as may be ascertained in accordance with the said conditions.

2. Until a formal Purchase Order is placed, this bid, together with your written acceptance thereof, shall constitute a binding contract between us. We understand that you are not bound to accept the lowest priced or any bid you may receive.

Dated this _____ day of _____ 201__

(Signature)
(In the capacity of)

Duly authorized to sign Bid for and on behalf of _____

(Signature of Witness)

Name: - _____

Address: - _____

BID SUMMARY SHEET
TENDER NO. (TE/02/QP-PROS/2021)
(TO BE ATTACHED WITH FINANCIAL BID)

1. Bidder Name _____
Address, Phone & Fax No _____
E-mail address _____
2. Manufacturer Name & _____
Country of Origin: _____
(Where required)
3. Items Quoted:(give serial no. only): _____

4. Price Validity: _____
5. Total FOR (Destination) Price (Without GST): Rs _____
6. Total FOR (Destination) Price (With GST): Rs _____
7. Amount of Bid Bond (without GST): Rs _____
8. Validity of Bid Bond (Expiry Date): _____
9. Offered Delivery Period: _____
10. Payment Terms: _____
11. GST Registration No. _____
12. Bidding Form (Annexure-B-1 attached with TECHNICAL bid): Yes No
13. Any Deviation: _____

Signature _____

Name & Designation _____

BANK GUARANTEE AS EARNEST MONEY

Guarantee # : _____
Date of Issue : _____
Date of Expiry : _____
Amount : _____

**Oil & Gas Development Company Limited
Qadirpur Gas Field,
Ghotki, Sindh-Pakistan**

In consideration of _____
hereinafter called "THE BIDDER" HAVING SUBMITTED THE ACCOMPANYING Bid and in
consideration of value received from (the bidder above), we hereby agree to undertake as follows:

1. To make unconditional payment of Rs. _____
(Rupees _____) up on your written
demand without further recourse, question or reference to the BIDDER or any other person
in the specified Bid after opening of the same for the validity thereof or if no such period be
specified, within 120 days after the said opening or if the Bidder, having been notified of the
acceptance of his bid by the Purchaser during the period of bid validity:
 - a) Fails or refuses to execute the Purchase Order in accordance with the instructions to
the Bidders, or
 - b) Fails or refuses to furnish Performance Bond in accordance with the instructions to
Bidders.
2. To accept written intimation(s) from you as conclusive and sufficient evidence of the
existence of a default or non-compliance as aforesaid on the part of the BIDDER and to make
payment accordingly within 03 (three) days of receipt of the written intimation.
3. No grant of time or other indulgence to or composition or arrangement with the Bidder in
respect of aforesaid Bid with or without notice to us shall affect this Guarantee and our
liabilities and commitments hereunder.
4. This guarantee shall be binding on us and our successors in interest and shall be irrevocable.

(BANKER)

DECLARATION OF FEES, COMMISSION AND BROKERAGE ETC.
CERTIFICATE

Submitted to OGDCL with the reference to Purchase Order No. _____

hereby declares its intention not to obtain or induce the procurement of any contract, right, interest, privileges or other obligation or benefit from Government of Pakistan or any administrative subdivision or agency thereof or any corrupt business practice.

Without limiting the generality of the foregoing, the Seller/ Supplier represents and warrants that it has fully declared the brokerage, commission, fees etc., paid or payable to anyone and not given or agreed to give and shall not be given or agree to give to any one within or outside Pakistan either directly or indirectly through any national or juridical person, including its affiliate, agent, associate, broker, consultant, briber, finder's fee or kickback, whether described as consultant fee or otherwise, with the object of obtaining or including the procurement of a contract right, interest, privilege or other obligation or benefit in whatsoever form from GOP except that privilege or other obligation or benefit in whatsoever form from GOP except that which has been expressly declared pursuant hereto.

The Seller/ Supplier certifies that it has made and will make full disclosure of all agreement and arrangements with all persons in respect of or related to the transaction with GOP and has not taken any action or will not take any action to circumvent the above declaration, representation or warranty.

The Seller/ Supplier accepts full responsibility and strict liability for making any false declaration not making full disclosure, mis-representing facts or taking any action likely to defeat the purpose of this declaration, representation and warranty. It agrees that any contract, right interest. Privilege or other obligation or benefit obtained or procured as aforesaid shall, without prejudice to any other rights and remedies available to GOP under any law, contract or other instrument, be voidable at the option of GOP.

Notwithstanding any rights and remedies exercised by GOP in this regard, the Seller/ Supplier agrees to indemnify GOP for any loss or damage incurred by it on account of its corrupt business practices and further pay compensation to GOP in an amount equivalent to ten times the sum of any commission, gratification, bribe, finder's fee or kickback given by the Seller/ Supplier as aforesaid for the purpose of obtaining or inducing the procurement of any contract, right, interest, privilege or other obligation or benefit in whatsoever form from GOP.

For & On Behalf of
Seller/ Supplier



OIL & GAS DEVELOPMENT COMPANY LTD

Oil & Gas Development Company Limited
Qadirpur Gas Field,
Ghotki, Sindh-Pakistan

TEL: : 92 072-3660683/4 (Ext.210)
FAX: : 92 072-3660676
EMAIL: : process_qp@ogdcl.com
Web Site: www.ogdcl.com
GST No: 07-02-2802-001-55

LPO No : TE/ / _____
M/s _____,

_____.

ISSUED ON : _____

SUBJECT: **LOCAL PURCHASE ORDER.**

Dear Sir,

Ref your quotation dated _____ opened on _____ against our Press Tender/Tender Enquiry/Fax Enquiry # PROC-L() _____ dated _____ regarding procurement of _____.

We feel pleasure in placing an order on you for the supply of stores given below. Terms and Conditions of supply are noted below and on reverse.

INDENT No. _____ DT. _____
A/C CODE: _____

FOR: (LOCATION _____) DEPARTMENT _____

S. NO.	DESCRIPTION	QTY	UNIT	INDEX NUMBER	UNIT RATE (RUPEES)		TOTAL (RUPEES)
					(EXCL OF GST)	(INCL OF GST)	
(RUPEES _____ ONLY)						GRAND TOTAL: (INCLUSIVE OF ____% GST)	

TERMS & CONDITIONS:

- DELIVERY PLACE & PERIOD:** AT OUR _____ WITHIN _____ AFTER ISSUANCE OF LPO.
- PAYMENT CLAUSE:**
 - PAYMENT AFTER DELIVERY (OR)
 - PAYMENT AGAINST DELIVERY (OR)
 - _____% ADVANCE PAYMENT AGAINST BANK GUARANTEE.
- PERFORMANCE BOND:** 10% PERFORMANCE BOND IN SHAPE OF BANK GUARANTEE AS PER CLAUSE # _____ OF TENDER DOCUMENTS MUST BE SUBMITTED WITHIN 10DAYS.
- INSPECTION:**
- PLEASE ACKNOWLEDGE RECEIPT OF THIS ORDER IMMEDIATELY ACKNOWLEDGEMENT AND/OR PERFORMANCE, PARTIAL OR COMPLETE, OF THIS PURCHASE ORDER SHALL CONSTITUTE THE SUPPLIER/SELLER'S ACCEPTANCE OF ALL TERMS AND CONDITIONS OF THIS PURCHASE ORDER WITHOUT REGARD TO AND IN SUPERCESSION OF ANY AND ALL PREVIOUS CORRESPONDENCE/ DOCUMENTATION BETWEEN THE PARTIES.

for **OIL & GAS DEVELOPMENT COMPANY LTD.**

GENERAL TERMS AND CONDITIONS

1. **GENERAL:** These terms and conditions shall form an integral part of this Local Purchase Order and both the Supplier/Seller and the Purchaser shall be bound by all the provisions contained hereunder.
2. **DELIVERY:**
 - a. The material strictly according to specification must be delivered through Delivery Challan in triplicate at the place and within the time mentioned in this order (on reverse) by you at your own expenses {excluding a grace period of 10 (Ten) days for postal delivery of this Purchase Order}.
 - b. Time is of the essence of this order.
3. **EXTENSION IN SUPPLY PERIOD:** Supply period may be extended in exception cases provided that:
 - a. Force Majeure case is established by the Supplier.
4. **INSPECTION:** All items of this order will be subject to acceptance/rejection by the Inspection Committee/3rd Party Inspector (if required), who will give its decision within 07 days of receipt of material. Rejected material shall be removed / replaced by the Supplier within 07 days from the date of receipt of letter/fax, issued by the Field Manager Qadirpur Gas Field. The Supplier will be liable to pay storage charges @ ½ % of the cost of rejected material on every day basis if the same is not removed within 07 days. After 10 days the penalty will be charged at the rate of 5% per day with the supplier's maximum liability under this clause not to exceed 15% of the total value of the Purchase Order.
5. **PENALTY:** For failure to comply with Delivery Clause, penalty shall be imposed on the Supplier as under:
 - a. @ ½ % of cost of entire order or such items as remain un-supplied for every day upto a maximum of 15% for 10 days exceeding the delivery period.
 - b. If the material is not supplied even after paying penalty for 10 (ten) consecutive days. OGDCL reserves the right to cancel the supply order and to obtain the required items from elsewhere at your risk and cost.
6. **DOCUMENTATION FOR PAYMENT:** Following documents must be provided after receipt of Local Purchase Order (LPO) and payment will be processed only after receipt of said certificates:
 - a. National Tax Number (NTN), General Sales Tax (GST) and Professional Tax Paid Certificates must be provided by the firm immediately after receipt of Local Purchase Order (LPO) and payment will be processed only after receipt of said certificates.
 - b. Commercial Invoice having NTN/CNIC Numbers
 - c. Sales Tax Invoice
 - d. Professional Tax Paid Certificate
 - e. Copy of valid Tax Exemption Certificate (if any)
 - f. Delivery Challan
7. **You are encouraged to inform the M.D. and Head of Deptt(s) on the following addresses/ contacts, in case where any OGDCL employee asks for any type of favour whether monetary or in kind:**

DESIGNATION	ADDRESS	TEL #	FAX #	E. MAIL
MANAGING DIRECTOR	OGDCL HOUSE, JINNAH AVENUE, ISLAMABAD	051- 9209701	051- 9209708	
I/C Process Section	Qadirpur Gas Field	072-3660683 Ext 210	072- 3660676	process_qp@ogdcl.com
8. **GOVERNING LAW:** This Local Purchase Order and any matter relating thereto shall be governed by the laws of Pakistan.
9. **WARRANTIES:** Supplier/Seller warrants that all goods, material, equipment or services furnished hereinabove will conform strictly to the Purchaser's specifications.
10. **TITLE:** Supplier/seller warrants that the goods, material, equipment shall be delivered free from any and all security interests, liens, encumbrances and claims of any nature.
11. **COMPLIANCE WITH LAWS:** Supplier/seller agrees to indemnify the Purchase for any loss, damage or cost suffered by the Purchaser as a consequence of the Supplier/seller's failure, deliberate or otherwise, to comply with any applicable laws, rules, regulations or orders/directives of any public sector entity and/or Government.
12. **ARBITRATION:** Any dispute, difference or question arising out of or in respect of this Purchase Order shall be settled by arbitration in accordance with the Arbitration Act, 1940.
13. Acknowledge receipt of this order immediately.

BANK GUARANTEE AS PERFORMANCE BOND

Guarantee # _____
Date of issue: - _____
Date of expiry:- _____
Amount: - _____

Oil & Gas Development Company Limited
Qadirpur Gas Field,
Ghotki, Sindh-Pakistan

In consideration of your issuance of Local Purchase Order # / / _____ dated _____ to M/s. _____ called supplier and in consideration for value received from supplier we (Please mention name of Bank) at the request of M/s. (Please mention name of supplier) hereby agree and under take as:-

1. To make unconditional payments to you as called upon 5% of the value of the LPO (please mention amount of guarantee in words and figures) mentioned in the said LPO on your return demands without further recourse, question or reference to supplier or any other person in the event of default, non-performance or non-fulfillment by supplier of his obligations, liabilities, responsibilities under the said LPO which you shall be the soul judge.
2. to accept return intimation from you as conclusive and sufficient evidence of existence if a default or breach as aforesaid on the part of supplier and to make payment accordingly within 03 (Three) days of receipt thereof .
3. To keep this guarantee in full force from the date hereof until 30 (Thirty) days from the date of delivery of last consignment of material at given destination as per LPO.
4. To keep 50% amount of this guarantee enforce from the date hereof until 12 months from the date of delivery of last consignment of the material of at given destination as per LPO.
5. That no grant of time or other indulgence to, amendment in the terms of LPO by agreement between the parties or imposition or agreement with LPO in respect of the performance of this obligations under the said agreement, with or without notice to us shall in any manner discharged or otherwise affect this guarantee and our liabilities and commitments their under.
6. This guarantee shall be binding on us and our successor's interest and shall be irrevocable.
7. This guarantee shall not be affected by any change in the constitutions of the Guarantor Bank or the supplier.

(BANKER)

BANK GUARANTEE AS ADVANCE PAYMENT

Guarantee # _____
Date of issue: - _____
Date of expiry:- _____
Amount: - _____

Oil & Gas Development Company Limited
Qadirpur Gas Field,
Ghotki, Sindh-Pakistan

1. WHEREAS M/s _____ (hereinafter called the Supplier) have requested us to furnish a Bank Guarantee for Pak Rs. _____ (Rupees _____) being _____% advance of the ordered value of Pak Rs. _____ (Rupees _____) in respect or LPO # FM/_____ issued on _____.
2. AND IN CONSIDERATION of you're paying an advance of Pak Rs. _____ we, _____ hereby guarantee to pay on demand a sum of Pak Rs. _____.

WE ALSO HEREBY AGREE:

- a) To make unconditional payment of maximum amount of Pak Rs. _____ without any question and without referring to the Supplier.
- b) To keep the guarantee in force till _____.
- c) To extend the period of enforceability of this guarantee if it becomes necessary to you and agreed to by us.
- d) We further undertake not to revoke this guarantee during its specified duration as above state except with your consent.

(BANKER)