

OIL & GAS DEVELOPMENT COMPANY LIMITED
PROCUREMENT DEPARTMENT, ISLAMABAD
FOREIGN SECTION E

(To be completed, filled in, signed
and stamped by the principal)

ANNEXURE 'A'

Material 25 NOS. MUDDY TYRES FOR NOMAD-65 VIBRATORS
Tender Enquiry No PROC-FE/CB/ECMP-4102/2018
Due Date
Evaluation Criteria FULL

SCHEDULE OF REQUIREMENT

Sr No	Description	Unit	Quantity	Unit Price (FOB)	Total Price (FOB)	Unit Price C & F BY SEA	Total Price C & F BY SEA	Deviated From Tender Spec. If Any
1	TYRE, WITH OUT RIM BRAND NEW, 1000/25 R25 EQUIVALENT TO 66-43-25 (PR 18-20), MUDDY TYRE FOR 19 HOLE IN RIM, STUD SIZE M 22 X 1.5, FOR OMSI AXLE, (drawing attached) IAS VIBRATOR "NOMAD-65" (detail spec terms & conditions attached).	Number	25					

Note:

NOTE:

1. Bid bond: - Pursuant to tender clause # 2.2, 11.4, 13 & 35.3.2, bid bond amounting USD 1,400/- (United States Dollar One Thousand Four Hundred only) or equivalent in Pak Rupees should be submitted with the technical bid.

2. Foreign Procurement Payment Terms (also available at OGDCL website (Tenders Tab))

Tender value less than or equal to US\$ 200,000:

Payment to the Contractor/ bidder in foreign currency shall be made by establishing in favor of the Contractor an irrevocable Letter of Credit (hereinafter called the L/C). 70 % Payment (s) under the L/C will be made for the FOB/ CFR / CPT (as the case may be) price of material of each shipment upon submission of the shipping documents. Balance 30% Payment will be released after receipt, inspection and acceptance of material.

Tender value more than US\$ 200,000:

Payment to the Contractor/ bidder in foreign currency shall be made by establishing in favor of the Contractor an irrevocable Letter of Credit (hereinafter called the L/C). 80 % Payment (s) under the L/C will be made for the FOB/ CFR / CPT (as the case may be) price of material of each shipment upon submission of the shipping documents. Balance 20% Payment will be released after receipt, inspection (in addition of pre-shipment inspection) and acceptance of material.

3. Evaluation Criteria: - FULL CONSIGNMENT WISE ON CFR (by sea) KARACHI BASIS.

4. Shipment from ACU member Countries: - In case of shipment from ACU member countries, the LC beneficiary should be of that particular country from where the consignment is being shipped.

5. Terms and conditions: - Bidders are advised to carefully read all the terms and conditions of the Tender Document available at OGDCL website in the master tender document and attached technical Terms & Conditions.

6. Delivery Period: 90 days

Oracle attachment requisition No. EW-247/17/007/2018 dated: 01-10-2018 for procurement of Muddy Tyres for (NOMAD-65 Vibrators)

Sr.No	DESCRIPTION	PART No.	UNIT	QTY	INDEX No.
1.	<p><u>MUDDY TYRES FOR NOMAD-65 VIBRATORS</u></p> <p>BRAND NEW TYRES SIZE 66X43X25 (PR-18-20) WITH OUT RIM, FOR 19 HOLE IN RIM size 25 HT/1.5, STUD SIZE M22X1.5 FOR OMSI AXLE (Drawing attached) REQUIRED FOR NOMAD-65 VIBRATORS approximately Vibrator weight (31000 KG) having the following specifications.</p> <ul style="list-style-type: none"> • Tyre size. = 66-43-25.00 (PR-18-20) • TT/TL = Tube less • Design = MUDDY Tyre • Rated Speed = 30 MPH (max) • Rated Load (Lbs)Max = 23610 • Recommended Rim size(in) = 25 HT/1.5 <p><u>2. Terms and conditions: -</u></p> <ul style="list-style-type: none"> ➤ OEM certificate must be provided by the bidder along with the bid. ➤ Material must be warranted for a minimum period of one year starting from the date of inspection in Pakistan. ➤ The bidder must provide sale record of quoted tyres. Also provide brochure of quoted tyres. ➤ Sr. /No. & date of manufacturing should be clearly embossed on each Tyre. ➤ E-mail, Postal address and Fax No of the manufacturer/bidder must be provided with the bid. ➤ Third party pre-shipment inspection may be carried out at manufacturer premises as per OGDCL procedure (if applicable). ➤ Delivery Period : 90 days 	F/D	Nos.	25	F/D

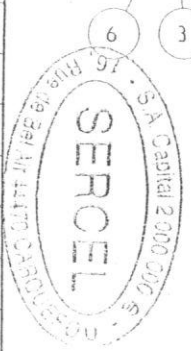
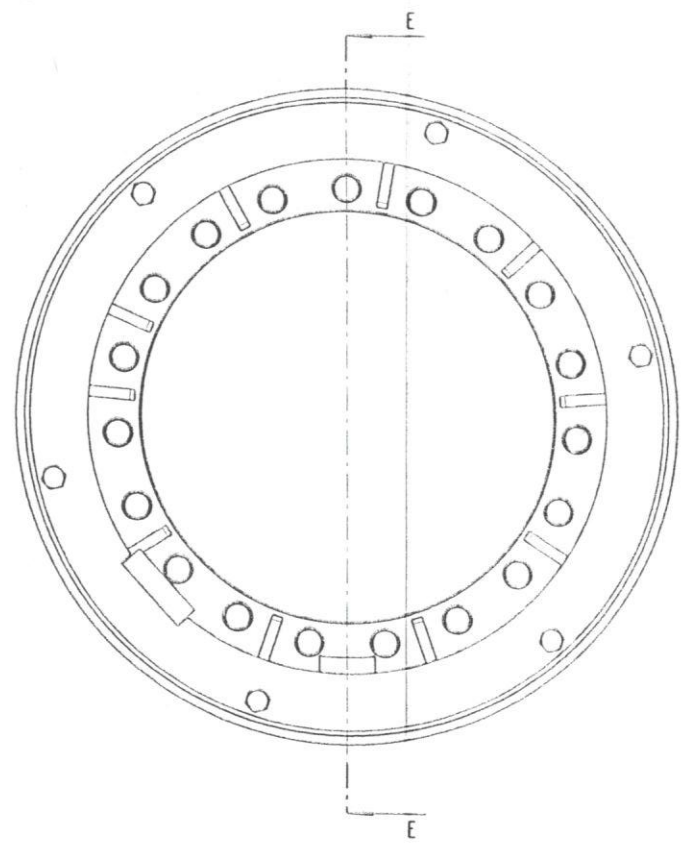
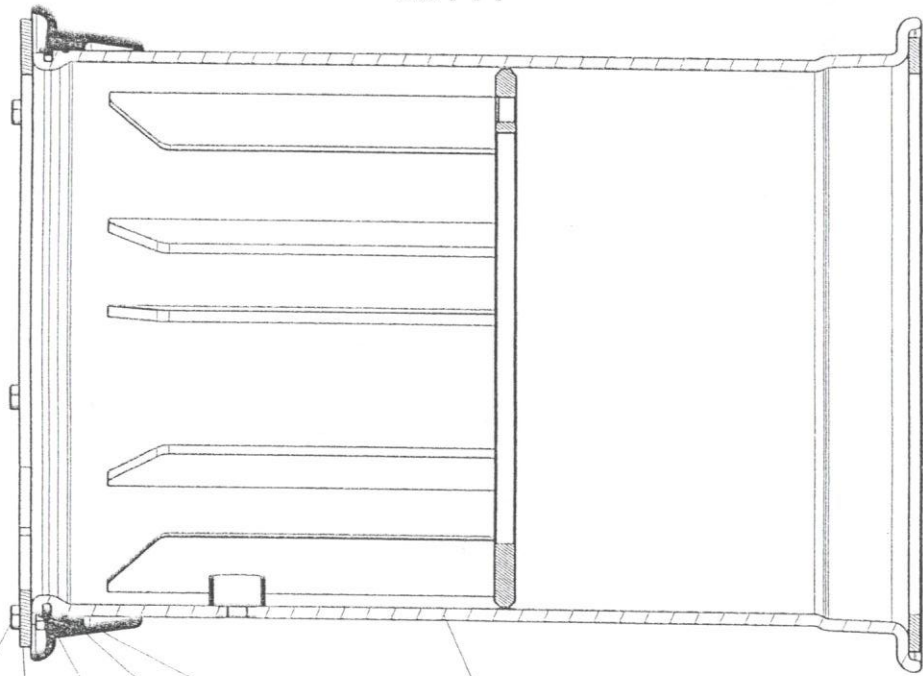
D

C

B

A

COUPE E-E



S. Michel

REP ITEM	CODE TYPE DOC TYPE	CODE SERCEL PART NUM	DESIGNATION DESCRIPTION	REFERENCE / SPECIF / LA PART NUMBER / SPECIF.	QTE QTY	Long/ou Vid/acc
1		254000012	LOCK		1	
2		254000018	JT MICHELIN OR 3-25	SULLA REF: 1437	1	
3		400060163	BRIDE DE MAINTIEN		1	
4	PF003	400113833	CERCLE LATERAL	SERCEL	1	
5	PF003	400151123	SOUDAGE JANTE 36x25 SANS W W	SERCEL	1	
6		1913323C	BOLT, HH 5/8-11 X 1 NC G5	790002946	6	

F									
E									
D									
C									
B									
A	CREATION	GUILLOU	21-Feb-02	DLG	21-Feb-02				
REV/D/T	NATURE DE LA MODIFICATION TYPE OF MODIFICATION	DESSINE/VERIFIE DRAWN/VERIFIED	DATE	VISA	APPROUVE APPROVED	DATE	VISA		
MATIERE/MATERIAL:		TRAITEMENT/TREATMENT:		COULEUR/COLOR:		MASSE/WEIGHT 0,000 Kg			
TITRE/TITLE		LE PLAN ORIGINAL SIGNE EST AU PLANEX		VOLUME: m3		TOL GEN / GEN TOL (Suez specific)			
NOMAD		JANTE COMPLETE SANS W.W.		ETAT DE SURFACE/FINISH		SUIVANT INSTRUCTION S902000324			
SERCEL		DE SAINT GAUDENS		CE PLAN EST LA PROPRIETE INALIENABLE DE		NUMERO DE PLAN / DRAWING REFERENCE		Echelle: 0,180	
CODE DTAN: F257		BP 69 - 31802 SAINT-GAUDENS CEDEX (FRANCE) Tel: (33)056 4899000 Fax: (33)056 4899033		PE003 604510123		CL: 04		Folio: 1/1	
S 904 00 0233700 Ce document est la propriété de SERCEL ST-GAUDENS. Toute reproduction et diffusion sans autorisation									

D

C

B

A