



# OIL & GAS DEVELOPMENT COMPANY LIMITED

## REQUEST FOR QUOTATION (SERVICES)

OGDCL House , Jinnah Avenue, Islamabad Pakistan

Phone:

Email:

**Description:** Hiring of Drilling Rig Services (2500-3000HP)

**RFQ No.:** SERVICES/CB/DO--6400000100/2022

**Indenting Department:** 289 DO Contract Mang

**Services Required For:**

**Bidding Procedure:** Single Stage Two Envelope

**Evaluation Criteria:** Rig Wise Basis

**Tax:**

**Bid Validity:** 180 DAYS FROM TECHNICAL BID OPENING

**Bid Bond Amount:** USD 125,000 FOR EACH RIG

**Duration of Contract /** 01 Years

**Completion Period:**

**Payment Terms:**

Item No.	Description	Unit	Qty	Total Price (USD)
10	DRILLING RIG SERVICES (2500-3000HP)	AU	1	

Sub No	Service No	Service Description	Quantity			Unit	Unit Price	Total Price
			Val 1	Val 2	Quantity			
10.1	1001746	First Mobilization Fee: Lump sum Lump sum rate for mobilization of complete drilling unit to the first drilling location as advised by Company, including but not limited to all related equipment, initial rig-up and acceptance of drilling unit by Company.	1	1	1	Lump Sum		
<b>Val 1:</b> QUANTITY <b>Val 2:</b> No. of Rig								
10.2	1001747	Demobilization Fee : Lump sum for demobilization of complete drilling unit including but not limited to rig-down, all equipment, consumables and spares from the last drilling location.	1	1	1	Lump Sum		
<b>Val 1:</b> QUANTITY <b>Val 2:</b> No. of Rig								
10.3	1001748	Operating Day Rate with Top Drive	365	1	365	Per Day		
<b>Val 1:</b> QUANTITY <b>Val 2:</b> No. of Rig								

Sub No	Service No	Service Description	Quantity			Unit	Unit Price	Total Price
			Val 1	Val 2	Quantity			
10.4	1001749	Operating Day Rate without Top Drive	0.001	1	0.001	Per Day		
<b>Val 1: QUANTITY</b>								
<b>Val 2: No. of Rig</b>								
10.5	1001750	T/Log&Mis rate with top drive with crew	0.001	1	0.001	Per Day		
<b>Val 1: QUANTITY</b>								
<b>Val 2: No. of Rig</b>								
10.6	1001751	T/Log&Mis rate w/out top drive with crew	0.001	1	0.001	Per Day		
<b>Val 1: QUANTITY</b>								
<b>Val 2: No. of Rig</b>								
10.7	1001752	T/Log&Mis rate with topdrive w/out crew	0.001	1	0.001	Per Day		
<b>Val 1: QUANTITY</b>								
<b>Val 2: No. of Rig</b>								
10.8	1001753	T/Log&Mis rate w/out topdrive w/out crew	0.001	1	0.001	Per Day		
<b>Val 1: QUANTITY</b>								
<b>Val 2: No. of Rig</b>								
10.9	1001754	Repair Rate	0.001	1	0.001	Per Day		
<b>Val 1: QUANTITY</b>								
<b>Val 2: No. of Rig</b>								
10.10	1001755	Remedial Rate(with top drive)	0.001	1	0.001	Per Day		
<b>Val 1: QUANTITY</b>								
<b>Val 2: No. of Rig</b>								
10.11	1001756	Remedial Rate(without top drive)	0.001	1	0.001	Per Day		
<b>Val 1: QUANTITY</b>								
<b>Val 2: No. of Rig</b>								
10.12	1001757	Location Move Charges at Actual	1	1	1	Lump Sum		
<b>Val 1: QUANTITY</b>								
<b>Val 2: No. of Rig</b>								
10.13	1001758	Inter-move rate upto 1km w/o shftng camp	0.001	1	0.001	Number		
<b>Val 1: QUANTITY</b>								
<b>Val 2: No. of Rig</b>								
10.14	1001759	Rig mob rate lump sum up to 50 km	0.001	1	0.001	Number		
<b>Val 1: QUANTITY</b>								
<b>Val 2: No. of Rig</b>								
10.15	1001760	Rig mob rate lump sum within 51 to 100km	0.001	1	0.001	Number		
<b>Val 1: QUANTITY</b>								
<b>Val 2: No. of Rig</b>								
10.16	1001761	Rig mob rate lumpsum within 101 to 150km	0.001	1	0.001	Number		
<b>Val 1: QUANTITY</b>								
<b>Val 2: No. of Rig</b>								
10.17	1001762	Rig mob rate lumpsum within 151 to 200km	1	1	1	Number		
<b>Val 1: QUANTITY</b>								

Sub No	Service No	Service Description	Quantity			Unit	Unit Price	Total Price
			Val 1	Val 2	Quantity			
<b>Val 2: No. of Rig</b>								
10.18	1001763	Rig mob rate lumpsum within 201 to 250km	1	1	1	Number		
<b>Val 1: QUANTITY</b>								
<b>Val 2: No. of Rig</b>								
10.19	1001764	Rig mob rate lumpsum within 251 to 300km	1	1	1	Number		
<b>Val 1: QUANTITY</b>								
<b>Val 2: No. of Rig</b>								
10.20	1001765	Rig mob rate lumpsum within 301 to 350km	0.001	1	0.001	Number		
<b>Val 1: QUANTITY</b>								
<b>Val 2: No. of Rig</b>								
10.21	1001766	Rig mob rate lumpsum within 351 to 400km	0.001	1	0.001	Number		
<b>Val 1: QUANTITY</b>								
<b>Val 2: No. of Rig</b>								
10.22	1001767	Rig mob rate lumpsum within 401 to 450km	0.001	1	0.001	Number		
<b>Val 1: QUANTITY</b>								
<b>Val 2: No. of Rig</b>								
10.23	1001768	Rig mob rate lumpsum within 451 to 500km	0.001	1	0.001	Number		
<b>Val 1: QUANTITY</b>								
<b>Val 2: No. of Rig</b>								
10.24	1001769	Rig mob rate lumpsum within 501 to 550km	0.001	1	0.001	Number		
<b>Val 1: QUANTITY</b>								
<b>Val 2: No. of Rig</b>								
10.25	1001770	Rig mob rate lump sum above 550km	0.001	1	0.001	Number		
<b>Val 1: QUANTITY</b>								
<b>Val 2: No. of Rig</b>								
10.26	1001773	Rig move day rate without trasport	0.001	1	0.001	Per Day		
<b>Val 1: QUANTITY</b>								
<b>Val 2: No. of Rig</b>								
10.27	1001774	Full board,3 meals Comp personel(Senior)	0.001	1	0.001	Number of Persons		
<b>Val 1: QUANTITY</b>								
<b>Val 2: No. of Rig</b>								
10.28	1001775	Boarding w/o meal Comp personel (Senior)	0.010	1	0.010	Number of Persons		
<b>Val 1: QUANTITY</b>								
<b>Val 2: No. of Rig</b>								
10.29	1001776	Breakfast cost Comp personel (Senior)	0.010	1	0.010	Number of Persons		
<b>Val 1: QUANTITY</b>								
<b>Val 2: No. of Rig</b>								
10.30	1001777	Lunch cost Comp personnel (Senior)	0.010	1	0.010	Number of Persons		
<b>Val 1: QUANTITY</b>								
<b>Val 2: No. of Rig</b>								

Sub No	Service No	Service Description	Quantity			Unit	Unit Price	Total Price
			Val 1	Val 2	Quantity			
10.31	1001778	Dinner cost Comp personnel (Senior)	0.010	1	0.010	Number of Persons		
<b>Val 1:</b> QUANTITY <b>Val 2:</b> No. of Rig								
10.32	1000032	Day Rate for Senior Mess of 10 persons	365	1	365	Number of Persons		
<b>Val 1:</b> QUANTITY <b>Val 2:</b> No. of Rig								
10.33	1001779	Full board,3 meals Comp person (Junior)	0.001	1	0.001	Number of Persons		
<b>Val 1:</b> QUANTITY <b>Val 2:</b> No. of Rig								
10.34	1001780	Boarding w/o meal Comp personel (Junior)	0.010	1	0.010	Number of Persons		
<b>Val 1:</b> QUANTITY <b>Val 2:</b> No. of Rig								
10.35	1001781	Breakfast cost Comp personel (Junior)	0.010	1	0.010	Number of Persons		
<b>Val 1:</b> QUANTITY <b>Val 2:</b> No. of Rig								
10.36	1001782	Lunch cost Comp personnel (Junior)	0.010	1	0.010	Number of Persons		
<b>Val 1:</b> QUANTITY <b>Val 2:</b> No. of Rig								
10.37	1001783	Dinner cost Comp personnel (Junior)	0.010	1	0.010	Number of Persons		
<b>Val 1:</b> QUANTITY <b>Val 2:</b> No. of Rig								
10.38	1000031	Day Rate for Junior Mess of 10 persons	365	1	365	Number of Persons		
<b>Val 1:</b> QUANTITY <b>Val 2:</b> No. of Rig								
10.39	1001784	Stacked rate with crew	1	1	1	Per Day		
<b>Val 1:</b> QUANTITY <b>Val 2:</b> No. of Rig								
10.40	1001785	Stacked rate without crew	1	1	1	Per Day		
<b>Val 1:</b> QUANTITY <b>Val 2:</b> No. of Rig								
10.41	1001786	Force Majeure with crew	1	1	1	Per Day		
<b>Val 1:</b> QUANTITY <b>Val 2:</b> No. of Rig								
10.42	1001787	Force Majeure without crew	1	1	1	Per Day		
<b>Val 1:</b> QUANTITY <b>Val 2:</b> No. of Rig								
10.43	1001800	Lump Sum Day rate for Annular Blowout Preventer Assy (Diverter) 29-1/2#-500 PSI W.P Quantity 01 No. Complete with all accessories as per Rig Specification at E1.5 including items at E1.5 + E1.5.1 + E1.5.2 + E1.5.3(OPERATING DAY RATE)	30	1	30	Per Day		

Sub No	Service No	Service Description	Quantity			Unit	Unit Price	Total Price
			Val 1	Val 2	Quantity			
<b>Val 1:</b> QUANTITY								
<b>Val 2:</b> No. of Rig								
10.44	1001801	Lump Sum Day rate for Annular Blowout Preventer Assy (Diverter) 29-1/2#-500 PSI W.P Quantity 01 No. Complete with all accessories as per Rig Specification at E1.5 including items at E1.5 + E1.5.1 + E1.5.2 + E1.5.3(STANDBY DAY RATE)	0.001	1	0.001	Per Day		
<b>Val 1:</b> QUANTITY								
<b>Val 2:</b> No. of Rig								
10.45	1001808	Blowout Preventer Assy. Ram type double unit 26-3/4#-3000 PSI W.P. vertical bore 20-3/4#, flanged top and bottom Quantity-01 No Complete with all accessories as per Rig Specification at E1.6(OPERATING DAY RATE)	60	1	60	Per Day		
<b>Val 1:</b> QUANTITY								
<b>Val 2:</b> No. of Rig								
10.46	1001809	Blowout Preventer Assy. Ram type double unit 26-3/4#-3000 PSI W.P. vertical bore 20-3/4# flanged top and bottom Quantity-01 No Complete with all accessories as per Rig Specification at E1.6 (STANDBY DAY RATE)	0.001	1	0.001	Per Day		
<b>Val 1:</b> QUANTITY								
<b>Val 2:</b> No. of Rig								
10.47	1001945	13 5/8#-15K PSI WP complete stack 02xRam type preventr (Double Stage Unit & 01xRam preventer Single stack plus 01x Annulr with all access & rams.(It is mandatory to quote Rates separately and provide within 60days of callout)(OPERATING RATE)	0.001	1	0.001	Per Day		
<b>Val 1:</b> QUANTITY								
<b>Val 2:</b> No. of Rig								

Sub No	Service No	Service Description	Quantity			Unit	Unit Price	Total Price
			Val 1	Val 2	Quantity			
10.48	1001946	13 5/8#-15K PSI WP complete stack 02xRam type preventer (Double Stage Unit & 01x Ram type preventer Single stack plus 01x Annular with all accessories & rams.(It is mandatory to quote Rates separately and provide within 60 days of callout)(STANDBY RATE)	0.001	1	0.001	Per Day		
<b>Val 1: QUANTITY</b> <b>Val 2: No. of Rig</b>								
10.49	1001947	Choke line, associated valves to Choke manifold system of 15K Psi with Kelly valves of 15k Psi (It is mandatory to quote Rates separately & provide additional item as requested by company within 60 days of call out)(OPERATING RATE)	0.001	1	0.001	Per Day		
<b>Val 1: QUANTITY</b> <b>Val 2: No. of Rig</b>								
10.50	1001948	Choke line, associated valves to Choke manifold system of 15K Psi with Kelly valves of 15k Psi(It is mandatory to quote Rates separately & provide additional item as requested by company within 60 days of call out)(STANDBY RATE)	0.001	1	0.001	Per Day		
<b>Val 1: QUANTITY</b> <b>Val 2: No. of Rig</b>								
10.51	1001949	Kill line, associated valves to kill manifold system of 15,000 Psi(It is mandatory to quote the Rates separately for all additional items and to provide additional item as requested by company within 60 days of call out)(OPERATING RATE)	0.001	1	0.001	Per Day		
<b>Val 1: QUANTITY</b> <b>Val 2: No. of Rig</b>								
10.52	1001950	Kill line, associated valves to kill manifold system of 15,000 Psi(It is mandatory to quote the Rates separately for all additional items and to provide additional item as requested by company within 60 days of call out)(STANDBY RATE)	0.001	1	0.001	Per Day		
<b>Val 1: QUANTITY</b>								

Sub No	Service No	Service Description	Quantity			Unit	Unit Price	Total Price
			Val 1	Val 2	Quantity			
<b>Val 2: No. of Rig</b>								
10.53	1001951	11 3/4# RAM assy with Packer for 13 5/8#x10K (Ram BOP#Triple Unit)(OPERATING RATE) (It is mandatory to quote the Rates separately & to provide additional item as requested by the company within 15 days of call out)	0.001	1	0.001	Per Day		
<b>Val 1: QUANTITY</b>								
<b>Val 2: No. of Rig</b>								
10.54	1001952	11 3/4# RAM assy with Packer for 13 5/8#x10K (Ram BOP#Triple Unit)(STANDBY RATE) (It is mandatory to quote the Rates separately & to provide the additional item as requested by the company within 15 days of call out)	0.001	1	0.001	Per Day		
<b>Val 1: QUANTITY</b>								
<b>Val 2: No. of Rig</b>								
10.55	1001953	Single ram BOP 26-3/4# # 3k with 2 outlets 4- 1/8#-3K complete with pipe rams for standard drill string in use ring gasket and other allied accessories. 01 SET. (OPERATING DAY RATE)	0.001	1	0.001	Per Day		
<b>Val 1: QUANTITY</b>								
<b>Val 2: No. of Rig</b>								
10.56	1001954	Single ram BOP 26-3/4# # 3k with 2 outlets 4- 1/8#-3K complete with pipe rams for standard drill string in use ring gasket and other allied accessories. 01 SET. (STANDBY DAY RATE)	0.001	1	0.001	Per Day		
<b>Val 1: QUANTITY</b>								
<b>Val 2: No. of Rig</b>								
10.57	1001955	Single Ram BOP 21-1/4# X 5000 PSI with 2 outlets 4-1/8# # 5000 PSI with 5# DP ram & 14# casing rams, ring gaskets & other allied accessories. 01 Set. (OPERATING DAY RATE)	0.001	1	0.001	Per Day		
<b>Val 1: QUANTITY</b>								
<b>Val 2: No. of Rig</b>								

Sub No	Service No	Service Description	Quantity			Unit	Unit Price	Total Price
			Val 1	Val 2	Quantity			
10.58	1001956	Single Ram BOP 21-1/4# X 5000 PSI with 2 outlets 4-1/8# # 5000 PSI with 5# DP ram & 14# casing rams, ring gaskets & other allied accessories. 01 Set. (STANDBY RATE)	0.001	1	0.001	Per Day		
<b>Val 1:</b> QUANTITY <b>Val 2:</b> No. of Rig								
10.59	1001790	LIH / DBR (FOR ANY TUBULARS)	1	1	1	Number		
<b>Val 1:</b> QUANTITY <b>Val 2:</b> No. of Rig								
10.60	1001960	Mob Cost Beyond 20 Loads + 10%HC	0.001	1	0.001	Lump Sum		
<b>Val 1:</b> QUANTITY <b>Val 2:</b> No. of Rig								
10.61	1001828	4# Drill Pipe & Its Handling Equipment. As per F.3.4 of Annexure A-1 (Operating rate)	0.001	1	0.001	Per Day/No		
<b>Val 1:</b> QUANTITY <b>Val 2:</b> No. of Rig								
10.62	1001829	4# Drill Pipe & Its Handling Equipment. As per F.3.4 of Annexure A-1 (Standby rate)	0.001	1	0.001	Per Day/No		
<b>Val 1:</b> QUANTITY <b>Val 2:</b> No. of Rig								

Item No.	Description	Unit	Qty	Total Price (USD)
20	DRILLING RIG SERVICES (2500-3000HP)	AU	1	

Sub No	Service No	Service Description	Quantity			Unit	Unit Price	Total Price
			Val 1	Val 2	Quantity			
20.1	1001746	First Mobilization Fee: Lump sum Lump sum rate for mobilization of complete drilling unit to the first drilling location as advised by Company, including but not limited to all related equipment, initial rig-up and acceptance of drilling unit by Company.	1	1	1	Lump Sum		
<b>Val 1:</b> QUANTITY <b>Val 2:</b> No. of Rig								



Sub No	Service No	Service Description	Quantity			Unit	Unit Price	Total Price
			Val 1	Val 2	Quantity			
20.2	1001747	Demobilization Fee : Lump sum for demobilization of complete drilling unit including but not limited to rig-down, all equipment, consumables and spares from the last drilling location.	1	1	1	Lump Sum		
<b>Val 1: QUANTITY</b>								
<b>Val 2: No. of Rig</b>								
20.3	1001748	Operating Day Rate with Top Drive	365	1	365	Per Day		
<b>Val 1: QUANTITY</b>								
<b>Val 2: No. of Rig</b>								
20.4	1001749	Operating Day Rate without Top Drive	0.001	1	0.001	Per Day		
<b>Val 1: QUANTITY</b>								
<b>Val 2: No. of Rig</b>								
20.5	1001750	T/Log&Mis rate with top drive with crew	0.001	1	0.001	Per Day		
<b>Val 1: QUANTITY</b>								
<b>Val 2: No. of Rig</b>								
20.6	1001751	T/Log&Mis rate w/out top drive with crew	0.001	1	0.001	Per Day		
<b>Val 1: QUANTITY</b>								
<b>Val 2: No. of Rig</b>								
20.7	1001752	T/Log&Mis rate with topdrive w/out crew	0.001	1	0.001	Per Day		
<b>Val 1: QUANTITY</b>								
<b>Val 2: No. of Rig</b>								
20.8	1001753	T/Log&Mis rate w/out topdrive w/out crew	0.001	1	0.001	Per Day		
<b>Val 1: QUANTITY</b>								
<b>Val 2: No. of Rig</b>								
20.9	1001754	Repair Rate	0.001	1	0.001	Per Day		
<b>Val 1: QUANTITY</b>								
<b>Val 2: No. of Rig</b>								
20.10	1001755	Remedial Rate(with top drive)	0.001	1	0.001	Per Day		
<b>Val 1: QUANTITY</b>								
<b>Val 2: No. of Rig</b>								
20.11	1001756	Remedial Rate(without top drive)	0.001	1	0.001	Per Day		
<b>Val 1: QUANTITY</b>								
<b>Val 2: No. of Rig</b>								
20.12	1001757	Location Move Charges at Actual	1	1	1	Lump Sum		
<b>Val 1: QUANTITY</b>								
<b>Val 2: No. of Rig</b>								
20.13	1001758	Inter-move rate upto 1km w/o shftng camp	0.001	1	0.001	Number		
<b>Val 1: QUANTITY</b>								
<b>Val 2: No. of Rig</b>								
20.14	1001759	Rig mob rate lump sum up to 50 km	0.001	1	0.001	Number		

Sub No	Service No	Service Description	Quantity			Unit	Unit Price	Total Price
			Val 1	Val 2	Quantity			
<b>Val 1:</b> QUANTITY								
<b>Val 2:</b> No. of Rig								
20.15	1001760	Rig mob rate lump sum within 51 to 100km	0.001	1	0.001	Number		
<b>Val 1:</b> QUANTITY								
<b>Val 2:</b> No. of Rig								
20.16	1001761	Rig mob rate lumpsum within 101 to 150km	0.001	1	0.001	Number		
<b>Val 1:</b> QUANTITY								
<b>Val 2:</b> No. of Rig								
20.17	1001762	Rig mob rate lumpsum within 151 to 200km	1	1	1	Number		
<b>Val 1:</b> QUANTITY								
<b>Val 2:</b> No. of Rig								
20.18	1001763	Rig mob rate lumpsum within 201 to 250km	1	1	1	Number		
<b>Val 1:</b> QUANTITY								
<b>Val 2:</b> No. of Rig								
20.19	1001764	Rig mob rate lumpsum within 251 to 300km	1	1	1	Number		
<b>Val 1:</b> QUANTITY								
<b>Val 2:</b> No. of Rig								
20.20	1001765	Rig mob rate lumpsum within 301 to 350km	0.001	1	0.001	Number		
<b>Val 1:</b> QUANTITY								
<b>Val 2:</b> No. of Rig								
20.21	1001766	Rig mob rate lumpsum within 351 to 400km	0.001	1	0.001	Number		
<b>Val 1:</b> QUANTITY								
<b>Val 2:</b> No. of Rig								
20.22	1001767	Rig mob rate lumpsum within 401 to 450km	0.001	1	0.001	Number		
<b>Val 1:</b> QUANTITY								
<b>Val 2:</b> No. of Rig								
20.23	1001768	Rig mob rate lumpsum within 451 to 500km	0.001	1	0.001	Number		
<b>Val 1:</b> QUANTITY								
<b>Val 2:</b> No. of Rig								
20.24	1001769	Rig mob rate lumpsum within 501 to 550km	0.001	1	0.001	Number		
<b>Val 1:</b> QUANTITY								
<b>Val 2:</b> No. of Rig								
20.25	1001770	Rig mob rate lump sum above 550km	0.001	1	0.001	Number		
<b>Val 1:</b> QUANTITY								
<b>Val 2:</b> No. of Rig								
20.26	1001774	Full board,3 meals Comp personel(Senior)	0.001	1	0.001	Number of Persons		
<b>Val 1:</b> QUANTITY								
<b>Val 2:</b> No. of Rig								
20.27	1001775	Boarding w/o meal Comp personel (Senior)	0.010	1	0.010	Number of Persons		
<b>Val 1:</b> QUANTITY								
<b>Val 2:</b> No. of Rig								

Sub No	Service No	Service Description	Quantity			Unit	Unit Price	Total Price
			Val 1	Val 2	Quantity			
20.28	1001776	Breakfast cost Comp personel (Senior)	0.010	1	0.010	Number of Persons		
<b>Val 1:</b> QUANTITY <b>Val 2:</b> No. of Rig								
20.29	1001777	Lunch cost Comp personnel (Senior)	0.010	1	0.010	Number of Persons		
<b>Val 1:</b> QUANTITY <b>Val 2:</b> No. of Rig								
20.30	1001778	Dinner cost Comp personel (Senior)	0.010	1	0.010	Number of Persons		
<b>Val 1:</b> QUANTITY <b>Val 2:</b> No. of Rig								
20.31	1001779	Full board,3 meals Comp person (Junior)	0.001	1	0.001	Number of Persons		
<b>Val 1:</b> QUANTITY <b>Val 2:</b> No. of Rig								
20.32	1001780	Boarding w/o meal Comp personel (Junior)	0.010	1	0.010	Number of Persons		
<b>Val 1:</b> QUANTITY <b>Val 2:</b> No. of Rig								
20.33	1001781	Breakfast cost Comp personel (Junior)	0.010	1	0.010	Number of Persons		
<b>Val 1:</b> QUANTITY <b>Val 2:</b> No. of Rig								
20.34	1001782	Lunch cost Comp personnel (Junior)	0.010	1	0.010	Number of Persons		
<b>Val 1:</b> QUANTITY <b>Val 2:</b> No. of Rig								
20.35	1001783	Dinner cost Comp personnel (Junior)	0.010	1	0.010	Number of Persons		
<b>Val 1:</b> QUANTITY <b>Val 2:</b> No. of Rig								
20.36	1001784	Stacked rate with crew	1	1	1	Per Day		
<b>Val 1:</b> QUANTITY <b>Val 2:</b> No. of Rig								
20.37	1001785	Stacked rate without crew	1	1	1	Per Day		
<b>Val 1:</b> QUANTITY <b>Val 2:</b> No. of Rig								
20.38	1001786	Force Majeure with crew	1	1	1	Per Day		
<b>Val 1:</b> QUANTITY <b>Val 2:</b> No. of Rig								
20.39	1001787	Force Majeure without crew	1	1	1	Per Day		
<b>Val 1:</b> QUANTITY <b>Val 2:</b> No. of Rig								
20.40	1001800	Lump Sum Day rate for Annular Blowout Preventer Assy (Diverter) 29-1/2#-500 PSI W.P Quantity 01 No. Complete with all accessories as per Rig Specification at E1.5 including items at E1.5 + E1.5.1 + E1.5.2 + E1.5.3(OPERATING DAY RATE)	30	1	30	Per Day		

Sub No	Service No	Service Description	Quantity			Unit	Unit Price	Total Price
			Val 1	Val 2	Quantity			
<b>Val 1:</b> QUANTITY								
<b>Val 2:</b> No. of Rig								
20.41	1001801	Lump Sum Day rate for Annular Blowout Preventer Assy (Diverter) 29-1/2#-500 PSI W.P Quantity 01 No. Complete with all accessories as per Rig Specification at E1.5 including items at E1.5 + E1.5.1 + E1.5.2 + E1.5.3(STANDBY DAY RATE)	0.001	1	0.001	Per Day		
<b>Val 1:</b> QUANTITY								
<b>Val 2:</b> No. of Rig								
20.42	1001808	Blowout Preventer Assy. Ram type double unit 26-3/4#-3000 PSI W.P. vertical bore 20-3/4#, flanged top and bottom Quantity-01 No Complete with all accessories as per Rig Specification at E1.6(OPERATING DAY RATE)	60	1	60	Per Day		
<b>Val 1:</b> QUANTITY								
<b>Val 2:</b> No. of Rig								
20.43	1001809	Blowout Preventer Assy. Ram type double unit 26-3/4#-3000 PSI W.P. vertical bore 20-3/4# flanged top and bottom Quantity-01 No Complete with all accessories as per Rig Specification at E1.6 (STANDBY DAY RATE)	0.001	1	0.001	Per Day		
<b>Val 1:</b> QUANTITY								
<b>Val 2:</b> No. of Rig								
20.44	1001945	13 5/8#-15K PSI WP complete stack 02xRam type preventr (Double Stage Unit & 01xRam preventer Single stack plus 01x Annulr with all access & rams.(It is mandatory to quote Rates separately and provide within 60days of callout)(OPERATING RATE)	0.001	1	0.001	Per Day		
<b>Val 1:</b> QUANTITY								
<b>Val 2:</b> No. of Rig								
20.45	1001955	Single Ram BOP 21-1/4# X 5000 PSI with 2 outlets 4-1/8# # 5000 PSI with 5# DP ram & 14# casing rams, ring gaskets & other allied accessories. 01 Set. (OPERATING DAY RATE)	0.001	1	0.001	Per Day		
<b>Val 1:</b> QUANTITY								
<b>Val 2:</b> No. of Rig								

Sub No	Service No	Service Description	Quantity			Unit	Unit Price	Total Price
			Val 1	Val 2	Quantity			
20.46	1001954	Single ram BOP 26-3/4# # 3k with 2 outlets 4- 1/8#-3K complete with pipe rams for standard drill string in use ring gasket and other allied accessories. 01 SET. (STANDBY DAY RATE)	0.001	1	0.001	Per Day		
<b>Val 1:</b> QUANTITY <b>Val 2:</b> No. of Rig								
20.47	1001953	Single ram BOP 26-3/4# # 3k with 2 outlets 4- 1/8#-3K complete with pipe rams for standard drill string in use ring gasket and other allied accessories. 01 SET. (OPERATING DAY RATE)	0.001	1	0.001	Per Day		
<b>Val 1:</b> QUANTITY <b>Val 2:</b> No. of Rig								
20.48	1001952	11 3/4# RAM assy with Packer for 13 5/8#x10K (Ram BOP#Triple Unit)(STANDBY RATE)  (It is mandatory to quote the Rates separately & to provide the additional item as requested by the company within 15 days of call out)	0.001	1	0.001	Per Day		
<b>Val 1:</b> QUANTITY <b>Val 2:</b> No. of Rig								
20.49	1001951	11 3/4# RAM assy with Packer for 13 5/8#x10K (Ram BOP#Triple Unit)(OPERATING RATE)  (It is mandatory to quote the Rates separately & to provide additional item as requested by the company within 15 days of call out)	0.001	1	0.001	Per Day		
<b>Val 1:</b> QUANTITY <b>Val 2:</b> No. of Rig								
20.50	1001950	Kill line, associated valves to kill manifold system of 15,000 Psi(It is mandatory to quote the Rates separately for all additional items and to provide additional item as requested by company within 60 days of call out)(STANDBY RATE)	0.001	1	0.001	Per Day		
<b>Val 1:</b> QUANTITY <b>Val 2:</b> No. of Rig								

Sub No	Service No	Service Description	Quantity			Unit	Unit Price	Total Price
			Val 1	Val 2	Quantity			
20.51	1001949	Kill line, associated valves to kill manifold system of 15,000 Psi(It is mandatory to quote the Rates separately for all additional items and to provide additional item as requested by company within 60 days of call out)(OPERATING RATE)	0.001	1	0.001	Per Day		
<b>Val 1: QUANTITY</b> <b>Val 2: No. of Rig</b>								
20.52	1001948	Choke line, associated valves to Choke manifold system of 15K Psi with Kelly valves of 15k Psi(It is mandatory to quote Rates separately & provide additional item as requested by company within 60 days of call out)(STANDBY RATE)	0.001	1	0.001	Per Day		
<b>Val 1: QUANTITY</b> <b>Val 2: No. of Rig</b>								
20.53	1001946	13 5/8#-15K PSI WP complete stack 02xRam type preventer (Double Stage Unit & 01x Ram type preventer Single stack plus 01x Annular with all accessories & rams.(It is mandatory to quote Rates separately and provide within 60 days of callout)(STANDBY RATE)	0.001	1	0.001	Per Day		
<b>Val 1: QUANTITY</b> <b>Val 2: No. of Rig</b>								
20.54	1001947	Choke line, associated valves to Choke manifold system of 15K Psi with Kelly valves of 15k Psi (It is mandatory to quote Rates separately & provide additional item as requested by company within 60 days of call out)(OPERATING RATE)	0.001	1	0.001	Per Day		
<b>Val 1: QUANTITY</b> <b>Val 2: No. of Rig</b>								
20.55	1001956	Single Ram BOP 21-1/4# X 5000 PSI with 2 outlets 4-1/8# # 5000 PSI with 5# DP ram & 14# casing rams, ring gaskets & other allied accessories. 01 Set. (STANDBY RATE)	0.001	1	0.001	Per Day		
<b>Val 1: QUANTITY</b> <b>Val 2: No. of Rig</b>								

Sub No	Service No	Service Description	Quantity			Unit	Unit Price	Total Price
			Val 1	Val 2	Quantity			
20.56	1000032	Day Rate for Senior Mess of 10 persons	365	1	365	Number of Persons		
<b>Val 1:</b> QUANTITY <b>Val 2:</b> No. of Rig								
20.57	1000031	Day Rate for Junior Mess of 10 persons	365	1	365	Number of Persons		
<b>Val 1:</b> QUANTITY <b>Val 2:</b> No. of Rig								
20.58	1001773	Rig move day rate without trasport	0.001	1	0.001	Per Day		
<b>Val 1:</b> QUANTITY <b>Val 2:</b> No. of Rig								
20.59	1001790	LIH / DBR (FOR ANY TUBULARS)	1	1	1	Number		
<b>Val 1:</b> QUANTITY <b>Val 2:</b> No. of Rig								
20.60	1001960	Mob Cost Beyond 20 Loads + 10%HC	0.001	1	0.001	Lump Sum		
<b>Val 1:</b> QUANTITY <b>Val 2:</b> No. of Rig								
20.61	1001828	4# Drill Pipe & Its Handling Equipment. As per F.3.4 of Annexure A-1 (Operating rate)	0.001	1	0.001	Per Day/No		
<b>Val 1:</b> QUANTITY <b>Val 2:</b> No. of Rig								
20.62	1001829	4# Drill Pipe & Its Handling Equipment. As per F.3.4 of Annexure A-1 (Standby rate)	0.001	1	0.001	Per Day/No		
<b>Val 1:</b> QUANTITY <b>Val 2:</b> No. of Rig								

# **OIL & GAS DEVELOPMENT COMPANY LIMITED**



**SERVICES/CB/DO-6400000100/2022**

**HIRING OF 2500-3000 HP DRILLING RIGS SERVICES**



**1. SCOPE OF WORK**

The company envisages drilling of wells that are proposed to be spudded as per OGDCL work plan. The drilling/completion/work over of deep wells will be to the depth of approx. ±6000M. To complete this extensive drilling program, the company wishes to engage Contractors to provide one (01) - two (02) Rigs 2500-3000 HP, as per OGDCL requirement plan on rate running contract basis conforming to specifications in the bid document at Annexure-A1 to A7. The Rig will be hired for (01) one-year primary term on rate running contract on well to well basis extendable with mutual consent.

Active reputed drilling rig contractors registered with I.A.D.C from last 10 years, having 10 years experience in drilling of oil & gas wells, are invited to participate in bidding process for OGDCL requirement to drill/work over wells as per company's program.

The broad rig specifications of API standard western or international standard designed for deep wells, electrical SCR or VFD rig of 2500-3000HP Draw works capacity, reputed western and proven Top Drive System, Rotary Drive System, API standard equipment, minimum 03 Nos. triplex mud pumps, high quality solid control equipment containing western manufactured, minimum 03 Nos. linear motion shale shakers, degasser, mud cleaner & high RPM centrifuge, mud storage capacity with separate pill and slug tanks. The BOP & Choke Manifold should be of reputable western or equivalent manufacturer and mud system capable to handle OBM and other Mud types. The suitable system also be provided with capability to handle OBM and WBM Waste Management services as per tender documents.

**2. COMMENCEMENT OF WORK**

OGDCL requires one (01) - two (02) 2500-3000 HP Rigs during the first quarter of CY 2023 to spud the well(s) by March 31, 2023. Rig available in Pakistan is required to spud the well within 30 days from the issuance of LOI or within 90 days from the issuance of LOI if the rig is to be arranged/imported from outside Pakistan. The contractor is bound to provide the Rig and ready to spud the well at OGDCL location as mention above.

However, if the first well is not spudded within the stipulated time due to delay on part of OGDCL such as non-availability of well / location then this period will be extended by three (03) months w.e.f April 01, 2023, and the contractor is bound to provide the Rig as per revised mobilization schedule. This period can be further extended with mutual consent of both parties (duration to be mutually agreed) and once consent has been established, rest of the contractual terms and conditions will apply for the mutually agreed revised spud date.

Duration of this Contract will be for a Primary Term of one (01) year commencing from spud date of first Well extendable with mutual consent on same terms and conditions (details given in Annexure A-6 Conditions of the contract clause 1.5). The drilling unit/units shall be deemed ready to commence operation when it is, in the opinion of company's representatives rigged up & ready to spud the first well against each rig (the planned commencement date). Company shall notify contractor in advance as per offered/agreed time frame so that the drilling unit is to be rigged up & ready to spud/work over. Contractor will notify when it has completed rigging up and is ready to spud the well with full crew. Contractor will reimburse Company the extra costs, i.e. other service contractors standby rates, etc., if well is

spudded later than 30/90 days after mobilization due to delay caused by the Contractor.

### **3. EVALUATION OF PROPOSALS**

#### **3.1 Technical Evaluation**

3.1.1 The Technical proposals shall be reviewed first to determine their responsiveness toward the Rig outfits as contained in Annexure A1 to A7. After completion of Technical Evaluation, the financial proposals of the bidders declared technically responsive will be opened and evaluated. The bids requiring substantial modification(s) to make them responsive will be rejected out rightly by the Evaluation Committee.

3.1.2 The Technical evaluation will be based on the below given disciplines.

<b>1. KEY ACCEPTANCE CRITERIA FOR 2500-3000 HP</b>		
<b>S.No.</b>	<b>Items</b>	<b>Allotted Points</b>
1.1	Bidder must be an IADC contractor member and maintaining records for last 10 years. Bidder to submit valid IADC certificate along with the bid documents. The bidder should be operating minimum of 5 land drilling rigs (with complete detail).	Mandatory
1.2	Rig shall have Draw works rated to minimum 2500-3000 HP.	Mandatory
1.3	Mast, substructure and other <sup>[01]</sup> load bearing members suffice to bear minimum 580 MT static loads.	Mandatory
1.4	Power system shall have sufficient capacity to simultaneously operate two mud pumps in parallel at rated capacity, Pick up minimum 580MT ST hook load and supply 1300 HP to top drive system and operate all connected AC load with thirty percent (30%) reserve AC power for all string loads with one (1) prime mover out of operation.	Mandatory
1.5	The rig must have minimum three triplex mud pumps capable to switch over among mud pumps through electrical panel. Rig circulating system must be capable of being used at 7500 psi stand pipe working pressure continuously. Mud tanks and low pressure system should be capable of handling minimum 2.2 SG mud wt.	Mandatory
1.6	Rig have following equipment from approved API/IADC Manufacturers: <ul style="list-style-type: none"> <li>- Mast</li> <li>- Substructure</li> <li>- Drawworks</li> <li>- Mud Pumps</li> <li>- BOP and Koomey Unit</li> <li>- Crown Block</li> <li>- Travelling Block</li> <li>- Hook / Elevator Links and other related hoisting equipment</li> <li>- Rotary Table</li> </ul>	Mandatory

	<ul style="list-style-type: none"> <li>- Swivel</li> <li>- Top Drive</li> <li>- Drill string component</li> </ul>	
1.7	In case of award of Contract, Rig to be made available for mobilization & rigged up at OGDCL's location, within timeline provided in ITT.	Mandatory
1.8	In case of award, contractor must agree to perform drilling operations anywhere in Pakistan including but not limited to Baluchistan and Khyber Pakhtunkhwa	Mandatory
1.9	Valid Well Control & other certifications of the personnel as stipulated in this ITT	Mandatory
1.10	<p>Proof of minimum 10 years of operations as an independent Drilling Rig Contractor inside or outside Pakistan (and minimum 5 years outside country of origin of the bidder) with MAJOR E&amp;P COMPANIES like BP, ENI, OMV, SHELL, CHEVRON, MOL, BHP or equivalent. However, bidder must have a total of minimum 10 years' experience. Pakistan origin listed companies can provide 10 years experience inside or outside Pakistan.</p> <p>Email Addresses / Contact Details to be provided for contact person in respective companies (any two) for COMPANY to extract performance related information / certificates, if so asked by OGDCL.</p>	Mandatory
1.11	Bidder to provide training matrix of the company and confirm the compliance of training matrix.	Mandatory
1.12	<p>Following systems to be in place and implemented. Bidder to confirm the compliance of following system in one statement (only confirmation required).</p> <ul style="list-style-type: none"> <li>- Preventive Maintenance System.</li> <li>- Management of Change (MOC) &amp; Exemption System.</li> <li>- Provision of HSE, Driving / journey, substance abuse &amp; IT policy (only policy is required).</li> <li>- Compliance of Rig Move Standard.</li> <li>- Permit to Work System.</li> </ul>	Mandatory
1.13	<p>Following two conditions regarding Rig inspection are acceptable for OGDCL.</p> <ul style="list-style-type: none"> <li>- OGDCL may ask to the contractor to carry out the detailed rig audit / inspection by an internationally renowned company like Lloyds Group, ModuSpec, ModuResources &amp; Archer prior rig acceptance or while operations as deemed essential on contractor own cost &amp; arrangement.</li> <li>• CAT-IV Rig inspection reports by a reputable company (i.e. Bureau veritas, etc.) to be submitted at the time of bid submission and must remain valid through out tenure of the contract. [02]</li> </ul>	Mandatory
1.14	Bidder to provide information about company profile as an independent drilling rig services provider, corporate policy & organization chart.	Mandatory

1.15	Bidder to confirm in single statement that inventory level of all critical spares will be maintained at all times.	Mandatory
1.16	Bidder to provide surface NPT / performance record of last well along with client details (i.e. name, email, contact number, etc). OGDCL may seek the verification from client. <b>Note:</b> Surface NPT should not exceed more than 2%.	Mandatory
1.17	Rated hoisting system capacity shall not be less than 580MT.	Mandatory

**NOTE:**

- 1- ALL REPORTS / PROOFS / PERFORMANCE LETTERS / RECORDS / MANAGEMENT SYSTEMS / COMPANY PROFILE ETC. MUST BE IN ENGLISH LANGUAGE.
- 2- BELOW ATTACHEMENTS ARE MANDATORY TO BE SUBMITTED. IN CASE OF UNAVAILABILITY OF THESE DOCUMENTS, BIDS SHALL BE DISQUALIFIED.

a. VALID IADC MEMBERSHIP CERTIFICATE AND RECORD OF MAINTAINING MEMBERSHIP FOR LAST 10 YEARS TO BE SUBMITTED FOR CLAUSE 1.1

b. COPIES OF API APPROVED OEM CERTIFICATION

c. EMAIL ADDRESSES / PHONE NO. / CONTACT DETAILS TO BE PROVIDED FOR CONTACT PERSON IN RESPECTIVE COMPANIES (ANY TWO) FOR COMPANY. FOR CLAUSE 1.10. (ATLEAST TWO (2) COMPANIES SHALL BE ACCEPTABLE)

d. BIDDER TO PROVIDE ONLY TRAINING MATRIX OF THE COMPANY AND CONFIRM THE COMPLIANCE OF TRAINING MATRIX.

e. RIG'S LAST 3<sup>RD</sup> PARTY INSPECTION RECORD / REPORTS (NOT OLDER THAN 2 YEARS) TO BE SUBMITTED FOR CLAUSE 1.13. IF CONTRACTOR HAS ITS OWN COMPANY STANDARD FOR PERIODIC RIG INSPECTION THAT DOCUMENT MUST BE SUBMITTED AS PROOF

- 3.1.3. The Technical Evaluation shall be based on the information as required vide Annexure-A1 to A-7 of the Tender Document.
- 3.1.4. Technical proposal not conforming to and deviating materially from the specifications and conditions laid down in Annexure A-1 to A-7 shall be determined to be non-responsive and shall be rejected.
- 3.1.5 The bid proposal should essentially include C.Vs of the professionals allocated/ expected to be deployed for the job holders of valid IWCF with copies are also essential. Any changes to such CVs once submitted will only be made after consulting and getting written approval from OGDCL.
- 3.1.6 Material deficiencies which will lead to disqualification:
  - i) Failing to get comply with mandatory requirements as set above.
  - ii) Reflect or demand of deviation from TOR of this Tender Enquiry will lead to disqualification.
  - iii) Non provision of desired supporting document.
- 3.1.7 Bidder will provide only GA drawings (lay out plan of rig with all system i.e. rig, mud system, power system etc.)

**3.2 Financial Evaluation.**

- 3.2.1 After completion of Technical Evaluation, the Financial Proposals of technically qualified bidders will be opened / analyzed to determine the most advantageous bid. To facilitate financial evaluation and comparison, the rates should be quoted in US Dollars.
- 3.2.2. For the purpose of determining the lowest financial bid for each rig, total cost shall be considered for all items of RFQ.
- 3.2.3. **Financial evaluation will be carried out based on the rates quoted by the bidder in RFQ. Bidders are advised to fill / quote the rates as per RFQ. Any prices quoted other than the RFQ will not be entertained. Moreover, bidder will not require to quote the LIH/DBR of any tubular as it is covered under clause 6.2 of Annexure A6.**  
 Additionally, bidder will quote the daily fuel consumption as per following format;

Sr. No.	Description	Quantity (UOM) (A)	Consumption Rate (B)	Total (AxB)
1	Daily fuel consumption of the rig and camp generator in Liters*	365 (Days)	To be Quoted (Liters)	XXXX

\* Information at Sr. No. 1 will be used for financial evaluation only as per following formula:

**Daily consumption in liters (Rig + Camp) x 365 Days x Rate of Diesel (in USD) as on date of technical bid opening.**

**Note:**

1. It is mandatory for the bidder to quote the daily fuel consumption of the offered Rig as per above cost format for financial evaluation. If bidder does not quote the above fuel consumption line item, the bid will be rejected.
2. Bidder to note that the above table ONLY serve the purpose of evaluation of the bids. The RFQ table does not guarantee the amount of work that will be offered to the bidder. Actual number of days may vary from the table. Payment shall be made as per actual job done.
3. Bidders to offer the Rig capable for handling the 5 1/2", 5", 4", 3-1/2" & 2-7/8" Drill string. OGDCL will not pay any cost for modification.
4. Bidders are requested to quote optimum fuel (HSD) consumption of the rig and camp generator per day in liters.
5. OGDCL will provide HSD to the contractor throughout the operations. In case the cumulative consumption over the duration of the well exceeds the cumulative consumption limit (Daily quoted consumption x total well duration), then excess quantity of HSD used by the rig and camp generators shall be deducted from contractor's last two months' invoices. Therefore, OGDCL will hold last two (or more as deemed required) months of operational invoice of contractor till the settlement of diesel consumption at that well.

**For Example:** The bidder quotes 7000 liters/day consumption of HSD and the total well duration (actual) is 330 days, then 2,310,000 liters of HSD will be the cumulative consumption limit over the duration of well.

<b>Quoted HSD (liters / Day) (A)</b>	<b>Duration of the well (Days) (B)</b>	<b>Cumulative Consumption Limit (Liters) (AxB)</b>
7000	330	2,310,000 liters

Now the cumulative actual consumption over the duration of well (i.e. 330 days) exceeds the cumulative consumption limit (i.e. 2,310,000 liters), then excess quantity of HSD will be deducted from bidders last two months invoices as explained below:

In case cumulative consumption over the entire duration of the well is 2,475,000 liters, whereas, cumulative consumption limit is 2,310,000 liters, then excess HSD consumption (i.e. 2,475,000-2,310,000 =165,000 liters) will be deducted from the last two months invoices. No adjustments shall be required if the cumulative consumption remains below the cumulative consumption limit.

<b>Cumulative Consumption Limit (Liters) (A)</b>	<b>Cumulative Consumption (Liters) (B)</b>	<b>Adjustment (Liters) (B – A)</b>
2,310,000	2,475,000	165,000 liters

6. Bidders are required to quote rates in US \$.
7. The bidders can quote one (01) or more Rigs with a firm availability schedule.
8. Taxes as per draft contract clause.
9. Cost of conventional casing running services will be included in the rig day rate.
10. Demobilization fee will be paid only in the instance where, after de-hired by OGDCL, the rig remained stack for 2 months and is not hired by any company in Pakistan or if the rig is demobilized out of Pakistan. The bidder will provide an undertaking clearly explaining its status after the completion of 02 months subsequent to release.
11. In order to evaluate CONTRACTOR's offered rig technically, the COMPANY reserves the right to visit and inspect CONTRACTOR's offered rig (including all its equipment/components) and Camp prior to confirmation of award of Contract. Any such visit if executed will not be constituted as binding upon the COMPANY to confirm the award of Contract. CONTRACTOR shall be bound to arrange and manage the visit upon COMPANY's request at COMPANY's expense. In case of tie, day-rate shall form the basis for selection. Each rig will be evaluated on the above parameters & lowest evaluated will be considered for award of Contract.
12. If any incumbent rig is awarded a new contract under this current tender (ITT), the new contractual terms & conditions will be applicable after completing the current contractual commitment.

**TECHNICAL REQUIREMENT FOR DRILLING RIG**

**SECTION-A: HOISTING EQUIPMENT**

<b>ITEM NO</b>	<b>OGDCL REQUIREMENT</b>	<b>BIDDER'S OFFER</b>
<b>A1</b>	<p>Draw works</p> <p>2500-3000 H.P minimum (Meeting API Standard) AC-DC, AC-VFD-AC</p> <ul style="list-style-type: none"> <li>• Manufacturer &amp; type</li> <li>• Drive</li> <li>• Auxiliary brake</li> <li>• Catheads (hydraulic Catheads are preferred)</li> <li>• Block control system Advanced Crown Saver System with speed control to Prevent Crown Out and/ or Blocks Dropping</li> <li>• Automatic driller Electronic automatic drilling system (NOV's Ideal Auto Driller / Academy System/Aker / Canrig / Bentec or equivalent) to work in conjunction with Disk brake and brake control safety systems or brake alternate integrated system with electronic feed for draw works controls to provide ROP control based on constant ROP, Weight on bit, differential pump pressure and torque.</li> <li>• Separate fresh water cooling system for auxiliary brake &amp; Draw Works, if applicable</li> </ul>	
<b>A2</b>	<p><b><u>Top Drive System</u></b></p> <p>Meeting API Standard (Western manufacturers / equivalent are acceptable only)</p> <ul style="list-style-type: none"> <li>• Make National Oil well Varco or Tesco or equivalent only</li> <li>• Complete Top Drive package minimum requirement                             <ul style="list-style-type: none"> <li>• Requirement minimum 1000 HP output</li> <li>• Rated capacity minimum 580MT ton &amp; minimum 200RPM</li> <li>• Torque normal - 60 ft.k lbs &amp; Drilling Torque – 37.5 ft.k lbs</li> <li>• Working pressure Minimum 10,000 psi</li> </ul> </li> <li>• Bidder to confirm availability of certified top drive Engineer / Technician at the site or closest range area during entire rig operational period. Advanced Soft Torque Rotary System (Electro Project or Equivalent) &amp; ACS (Anti-collision system)</li> </ul> <p><b>Note:</b> Bidder to provide the followings for Western origin or non-Western origin TDS:</p> <ol style="list-style-type: none"> <li>a) Inventory levels of spare parts are maintained as per OEM recommendations &amp; OEM recommended inventory list to be shared with OGDCL as part of the bid document.</li> <li>b) Last overhaul of the TDS carried out by the OEM as per API requirements. It should not be more than 5 years old.</li> <li>c) Maintenance record for the past three (03) years.</li> <li>d) Confirmation from the bidder that TDS will be inspected by the OEM prior to the rig acceptance at first location of OGDCL under the contract.</li> </ol>	

<p><b>A3</b></p>	<p><b><u>Mast &amp; Substructure</u></b></p> <ul style="list-style-type: none"> <li>• Mast capacity 580MT tons (minimum) (Meeting API Standard)</li> <li>• Manufacturer &amp; type</li> <li>• Dimensions</li> <li>• Gross nominal rating, be able to handle 3-1/2"/5"/5 1/2" DPS stands up to depth of ±6000M.</li> </ul> <p>Counterbalance Climbing safety device for derrick man and casing stabber.</p> <ul style="list-style-type: none"> <li>• Hook load rating with 12/14 lines (Minimum 580MT tons)</li> <li>• <b>Tubing belly board</b></li> <li>• Installed in derrick for racking limber stands of tubulars when required</li> <li>• Adjustable stabbing board 50-60 ft.</li> <li>• Substructure capacity: <ul style="list-style-type: none"> <li>• Rotary load capacity = Minimum 580 MT tons</li> <li>• Set back load capacity = 300 MT tons (set back trays must be provided to collect &amp; control mud draining from setback tubulars.</li> <li>• Simultaneous load capacity minimum 800-900 Tons</li> </ul> </li> <li>• Racking capacity 200 stands of 4"/5"/5 1/2" drill pipes and Drill collars 12 Nos. of 9"</li> <li>• Air winches 02 Nos. 05-ton capacity each</li> <li>• 150 kg SWL Man rider = 01 set (mandatory)</li> <li>• Last independent inspection/survey/ and Inspection to be provided by Contractor</li> </ul> <p>Substructure Mats: Full substructure-width mats placed crosswise to ground beam direction and extending at least two (2) feet outside ground beams.</p> <p>Top drive installation Capability: Yes.</p> <p>Substructure flooring having sufficient clear height to permit easy installation of CONTRACTOR furnished BOP stacks (as one piece) with drip pan for OBM and COMPANY furnished wellhead equipment with sufficient room for installation of emergency hangers and installation of RCD (rotating control device = approx. height 1.77m). BOP trolley is mandatory.</p>	
<p><b>A3.1</b></p>	<p><b><u>Pipe Racks</u></b></p> <p>Pipe racks with adequate capacity for 3500 m 14"/ 13 3/8" casing of max. 2 layers and suitable to accommodate drill pipe, drill collars for drilling &amp; inspection and tubing. Complete with catwalk and walkways. Catwalk and pipe rack c/w means to prevent tubular from rolling off.</p> <p>Air winch for end of catwalk c/w wood lined pipe catcher across width of catwalk and 0.5 m high. Pipe racks to be covered with wood/suitable material when handling 13 Cr. tubing. Pipe racks to be inspected and certified for Max SWL by certifying authority.</p> <p>A pair of short pipe racks suitable for thread inspection or temporary storage of drill string elements shorter than a joint of pipe (i.e. mud motors, drilling jars, etc.) c/w means to prevent tubular from rolling off.</p>	



ITEM NO	<b><u>OGDCL REQUIREMENT</u></b>	BIDDER'S OFFER
A4	<b><u>Crown Block</u></b> Meeting latest API Standard <ul style="list-style-type: none"> <li>• Capacity Minimum 580MT tons</li> <li>• Manufacture and type Drawings to be attached</li> <li>• Wireline</li> <li>• Spool capacity 7500 ft</li> <li>• Drilling line guides</li> <li>• Dead line anchor</li> </ul>	
A5	<b><u>Traveling Block Assembly</u></b> Meeting latest API Standard <ul style="list-style-type: none"> <li>• Manufacturer</li> <li>• Block type and rating minimum 580 MT ton</li> <li>• Hook, type and rating</li> <li>• Elevator links, size and rating drive Minimum 580 MT ton</li> </ul>	

**SECTION-B: ROTARY EQUIPMENT**

ITEM NO	OGDCL REQUIREMENT	BIDDER'S OFFER
B1	<b><u>Rotary Table</u></b> Meeting latest API Standard 7K <ul style="list-style-type: none"> <li>• Make and type</li> <li>• Opening 37-1/2" (preferred 49-1/2")</li> <li>• Drive Independent</li> <li>• Input H.P Min 1000 HP</li> <li>• Master bushings Split</li> <li>• Other bushing for OGDCL casings</li> <li>• Static load rating minimum 580MT ton</li> <li>• Spare AC/DC motor 1 required</li> <li>• Rotary Beam load capacity</li> </ul>	
B2	<b><u>Swivel</u></b> Meeting latest API Standard 8A (Swivel integrated in TDS is acceptable) <ul style="list-style-type: none"> <li>• Make and type</li> <li>• Rating (dead load) (minimum 580 MT tons)</li> <li>• Bearing rating 100 to 150 RPM</li> <li>• Working pressure Minimum 7500 psi</li> </ul>	
B2-1	<b><u>Kelly Spinner or Iron Roughneck (Backup option for Top Drive)</u></b> <ul style="list-style-type: none"> <li>• Type</li> <li>• Power/</li> <li>• Air/hydraulic</li> </ul>	

<b>B3</b>	<p><b><u>Kelly Equipment</u></b></p> <ul style="list-style-type: none"> <li>• Kellys No., make, size, length, shape 5-1/4", 3-1/2" Connections</li> <li>• Kelly cock upper pressure rating 10,000 PSI</li> <li>• Kelly valve sizes pressure rating</li> <li>• Kelly saver sub-connection</li> <li>• Kelly drive bushing</li> <li>• Manufacturer</li> <li>• Type</li> <li>• Number</li> <li>• Mouse hole back up tool</li> <li>• Spare 5", 5-1/2" &amp; 3-1/2" Kelly cock valve 10,000 PSI WP</li> </ul> <p>Kelly is required as a backup only</p>	
-----------	---	--

**SECTION C: HIGH PRESSURE SYSTEMS**  
(Western or equivalent manufacturer of International repute)

ITEM NO	OGDCL REQUIREMENT	BIDDER'S OFFER
<b>C1</b>	<p><b><u>Slush Pumps</u></b> (Meeting API Standard)</p> <ul style="list-style-type: none"> <li>• Number 3 X 1600 HP each minimum output of 600 GPM each (OBM compatible accessories)</li> <li>• Manufacturer</li> <li>• Type Triplex slush pumps</li> <li>• Drive Electrical</li> <li>• Max input horse power per pump</li> <li>• Liner sizes utilized in the pump</li> <li>• Pulsation dampeners</li> <li>• Reset relief valves</li> <li>• Isolation valves - Type</li> <li>• Pressure rating</li> <li>• Pre-charge pumps size/horsepower 6x8 R with each pump</li> <li>• Suction manifold Schematic required</li> <li>• Suction dampeners</li> <li>• Lubrication</li> </ul> <p>Bidder to confirm minimum 7500 PSI pressure capability of the system for better drilling performance with mud motors &amp; RSS.</p> <p>Bidder shall supply following sizes of pump liners; 7", 6 ½, 6" and 5 ½", 5". All vibrator hoses used shall be provided with fully molded connections. Pumps should be able to run at 95% of manufacture's rated stroke per minute (SPM)</p>	
<b>C2</b>	<p><b><u>High Pressure Lines</u></b></p> <p>Meeting API Standard (min 7500 psi WP, 4" ID &amp; test pressure of 10,000 Psi)</p> <ul style="list-style-type: none"> <li>• Discharge line 02 Nos. ID 4" x Min 7500 PSI WP</li> <li>• Rotary hoses 2 Nos. rotary hose ID 4" x 65 feet each 7500 PSI WP</li> <li>• Stand pipe manifold 2 Nos. (7500 PSI) W.P 4" ID for manifold and valves) Arrangement for reverse circulation drill pipe bleed off line with valve and choke connected to choke manifold through non return valve. Connection for the two stand pipes slush pumps, cement discharge (independent from manifold). Facility to connect chocks.</li> </ul> <p>Note: All Pipe Work from mud pumps to swivel to have a min ID 4"</p> <ul style="list-style-type: none"> <li>• 2" spare fill-up hoses in derrick 60' long 5000-7500 PSI WP for filling casing &amp; hole.</li> </ul>	

**SECTION D : LOW PRESSURE SYSTEM**

ITEM NO	OGDCL REQUIREMENT	BIDDER'S OFFER
D1	<p><b>Mud Tank Total system 4500 bbls (minimum)</b>                      7-9 Mud Tanks (along with mud guns &amp; agitators) capacity 4500 bbls (Excluding dead volume) with minimum 3 eye wash points                      Wooden platform/planks (20 ftx 10ft) for mud chemicals total 20 Nos approx.</p>	
D1.1	<p>• <b>Active mud tanks:</b></p> <ul style="list-style-type: none"> <li>• Tank 1 (capacity, size) 500 bbls</li> <li>• Sand trap (capacity, to be provided by the bidder to meet volume of mud tank)</li> <li>• Pill tank 1 &amp; 2 100 bbl. Each will be part of suction tank-2&amp;3</li> <li>• Suction tank 2 (capacity) 400 bbls</li> <li>• Suction tank-3 (Capacity) 400bbls</li> <li>• Tank 4 (Capacity) 500bbls</li> </ul>	
D1.2	<p>• <b>Reserve mud tanks:</b></p> <ul style="list-style-type: none"> <li>• Tank 5 (capacity, size) 500 bbls</li> <li>• Tank 6 (capacity, size) 500 bbls</li> <li>• Tank 7 (capacity, size) 500 bbls</li> </ul> <p><b>Note:-</b></p> <ul style="list-style-type: none"> <li>• Tank 8 (capacity, size) 500 bbls</li> <li>• Tank 9 (capacity, size) 500 bbls</li> <li>i) Direct suction &amp; isolation of each mud tank required</li> <li>ii) Butterfly valve to be at the bottom of mud tanks &amp; large opening in grating on top of mud tank.</li> <li>iii) Appropriate size, Pill tank with (20-25 m<sup>3</sup>) direct suction line to be supplied.</li> </ul>	
D1.3	<p><b><u>Trip tank /stripping tank (Mandatory)</u></b></p> <p>Trip tank should Minimum 70 bbls electronic depth sensor and mechanical backup connected to stripping tank (minimum 5 bbls) which must meet Employer's requirements</p> <ul style="list-style-type: none"> <li>• Capacity</li> <li>• Level indicator</li> <li>• Location. Bidder to provide the drawing of mud system.</li> <li>• Hole fill pump output</li> </ul>	
D1.4	<p><b><u>Mud Guns</u></b></p> <ul style="list-style-type: none"> <li>• HP guns</li> </ul>	
D1.5	<p><b><u>Water Tanks</u></b></p> <p>Minimum capacity (1258 bbls) Equipped with pressurizing pumps</p>	
D1.6	<p><b><u>Low Pressure Pump</u></b></p> <p>02-03 required (with 02 Nos. low pressure pumps &amp; motors)</p> <ul style="list-style-type: none"> <li>• Manufacturer and type</li> <li>• Driver</li> <li>• Motor speed and horse power 75 HP</li> <li>• Impeller size</li> </ul>	

**Solids Control Equipment Specification for 2500-3000 HP Drilling Rig  
Low Pressure Mud System.**

1. **OEM COC (Certificate of Compliance) for the below listed tender specifications.**
2. **OEM/EXISTING COMPANY preventive maintenance program Compliance as per API requirement for the equipment.**

**Bidder to provide manufacturer, model and type of all offered equipment.**

<b>D2.1</b>	<p><b>Shale Shaker</b> Minimum of 3 x shale Shaker Setup to process as per below parameters,</p> <ol style="list-style-type: none"> <li>1. <b>28”/ 26” Section:</b> 1200 GPM of 10.4 PPG WBM, 10 PV, 12 YP, ROP 40 ft/hour with Screen Sizes of API-80 / API-100</li> <li>2. <b>17”/ 17 ½” Section:</b> 900 GPM of 13.5 PPG WBM/ OBM, 18 PV; 30 YP; ROP 30 ft/hour with Screen Sizes of API-120 / API-140</li> <li>3. <b>12 ¼” Section:</b> 650 GPM of 19 PPG OBM, 18 PV, 25 YP, ROP 25 ft/hour in with Screen Sizes of API-140 / API-170</li> <li>4. <b>8 ½” Section :</b> 450 GPM of 14 PPG, 16 PV, 20 YP, ROP 20 ft/hour in with Screen Sizes of API-200 / API-230</li> <li>5. <b>6”/ 5-7/8” Section :</b> 350 GPM of 13.5 PPG, 16 PV, 20 YP, ROP 20 ft/hour in with Screen Sizes of API-200 / API-230</li> </ol> <p>Note: Mud Engineer can make changes on the screening selection due to the drilling conditions. API 40 or 45 up to API 60 will be required for situation when LCM is in the system</p> <p>Preferred shakers will be: NOV Sabre. Derrick Hyperpool. Mi Swaco MD-2 or Equivalent shakers will also be acceptable if they comply with the below listed Performance and Features for the required shake shakers.</p> <p><b>Performance and Features.</b></p> <ul style="list-style-type: none"> <li>• It is mandatory that the offered shale shakers should be able to handle the above listed volume and mud parameters. A Minimum three (3) Shale Shaker will be required.</li> <li>• The offered shale shaker should be of the latest version/ models being used in the oil and gas industry. The version/ models should not be more than ten (10) years old.</li> <li>• Each Shaker will have a minimum of four screen panels. Shakers can be single or double deck</li> <li>• The offered Shakers should not be more than five (5) years old at the start of the contract.</li> <li>• Minimum API Non-Blanked Screening area will be 20 Sq Ft per shaker. Higher will be preferred.</li> <li>• Minimum G Force required is 7 G’s, continuous. If the shaker has a boost mode to take the G force above 7 G’s, they will be preferred.</li> <li>• Shakers can be Balanced Elliptical Motion or Liner Motion.</li> <li>• The offered shaker will only have pneumatic, hydraulic, compression, screen installation system. Wedge type compression system is not allowed for shale shaker screens.</li> <li>• The electrics should be complied with UL Class 1, Division 1, Groups C and D. Zone 1 EEXD IIB T3</li> <li>• All the required spare parts as per the OEM will be maintained at the rig site at all times.</li> </ul>	
-------------	---	--

<p><b>D2.2</b></p>	<p><b>Shale Shaker Screens</b></p> <ul style="list-style-type: none"> <li>• Screens will be complying with API RP 13C (ISO 13501). If necessary OGDCL will get the screens tested for API RP 13 C and ISO 13501 compliance. ONLY OEM screens will be acceptable.</li> <li>• Cut point and conductance of each API Screen size will be listed clearly. Only screens with higher conductance as per API RP 13C (ISO 13501) will be used for the operations.</li> <li>• Below listed are the minimum quantities of shaker screens will be available on rig site at spud and will be replaced as they are consumed. <ul style="list-style-type: none"> <li>API 40 or 45: 16</li> <li>API 60: 16</li> <li>API 80: 16</li> <li>API 100: 16</li> <li>API 120: 36</li> <li>API 140: 36</li> <li>API 170: 36</li> <li>API 200: 36</li> <li>API 230: 24</li> <li>API 270: 16</li> </ul> </li> </ul>	
<p><b>D2.3</b></p>	<p><b><u>Mud Cleaner</u></b></p> <ul style="list-style-type: none"> <li>• Mud Cleaner will process 120% of the total Circulating Volume of the mud parameters at any time of the drilling activity.</li> <li>• Mud Cleaner Cone under flow will be processed over API 230, API 270 Screens.</li> <li>• Mud Cleaner will be equipped with 20 each 4" De Silter cones having a processing capacity of 80 GPM each cone and 3 each 10" De Sander cones having a processing capacity of 500 GPM each cone.</li> <li>• The shaker part of the Mud Cleaner should be the same as the primary rig shakers.</li> <li>• Mud Cleaner centrifugal pump should be able to generate a 75ft head during all drilling activities when the mud cleaner is being used, so that the Mud Cleaner Cones can function correctly.</li> <li>• The pressure gauge on the cone assemblies should be new and in proper working condition all the time.</li> <li>• The electrics on the centrifugal pump should comply with UL Class 1, Division 1, Groups C and D. Zone 1 EEXD IIB T3</li> <li>• All the required spare parts as per the OEM will be maintained at the rig site at all times</li> </ul>	
<p><b>D2.4</b></p>	<p><b>Flow Distributor</b></p> <ul style="list-style-type: none"> <li>• Flow line should not T to feed the three Shakers and Mud Cleaner. A proper Flow Distributor Box should be installed between the flow line and the shakers and mud cleaner to feed the three shakers and the mud cleaner as the 4<sup>th</sup> shaker when the not being used as the mud cleaner.</li> </ul>	

<b>D2.5</b>	<p><b>Vacuum De Gasser</b></p> <ul style="list-style-type: none"> <li>• The Vacuum De Gasser should be able to process 120% of the total Circulating Volume of the mud parameters at any time of the drilling activity.</li> <li>• The Vacuum De Gasser should be of vertical tank design and have a minimum leaf area of 10m<sup>2</sup>.</li> <li>• All pressure gauges and safety valves should be new with OEM certificates.</li> <li>• The Vacuum De Gasser should have a 5HP vacuum pump, capable of pulling 29" Hg.</li> <li>• The Vacuum De Gasser's centrifugal pump should be able to generate a 75ft head during all drilling activities when the Vacuum De Gasser is being used.</li> <li>• The electrics on the centrifugal pump should comply with UL Class 1, Division 1, Groups C and D. Zone 1 EEXD IIB T3</li> <li>• All the required spare parts as per the OEM will be maintained at the rig site at all times</li> </ul>	
<b>D2.6</b>	<p><b>Agitators</b></p> <ul style="list-style-type: none"> <li>• Bidder to provide TOR (turnover rate) for each of the mud tank/ mud compartment, to process/agitate the drilling mud as per the mud weights (1.5 to 2.2) SG  TOR should be as per following,  Suction = 65-80 sec  Solids Control = 50-75 sec  Slug/Pill = 40-60 sec  Reserve = 50-80 sec</li> <li>• The electrics on the agitators should comply with UL Class 1, Division 1, Groups C and D. Zone 1 EEXD IIB T3.</li> <li>• Belt driven Agitators will not be acceptable. Motor should be attached to the gear box directly. Horizontal Agitators will be preferred.</li> <li>• All the required spare parts as per the OEM will be maintained at the rig site at all times</li> </ul>	
<b>D2.7</b>	<p><b>Mud Mixing and Shearing Hopper C/W required Pumps</b></p> <ul style="list-style-type: none"> <li>• The system should have 02 Nos mud mixing and 01 No shearing hopper connected with required pumps and capable of handling high flow rate requirements, and difficult to mix additives like polymers, guar and clays high concentrate of barite.</li> <li>• The Mixing and Shearing hopper should be able to pre-wet, chemical additive particles, preventing them from forming clumps or fish eyes in the mixed slurry</li> <li>• Flow range 260–350 gpm.</li> <li>• Differential head 115–185 ft of head</li> <li>• The electrics on the centrifugal pump should comply with UL Class 1, Division 1, Groups C and D. Zone 1 EEXD IIB T3</li> </ul>	

D2.7	<p><b>Centrifuges</b></p> <ul style="list-style-type: none"> <li>• Two centrifuges, of a minimum of 14” bowl diameter will be required, which can run in both solids’ removal and barite recovery mode.</li> <li>• Preferred Centrifuges will be: NOV HS 3400 FHD. Derrick DE 1000 FHD. Mi Swaco 518 FHD. Equivalent centrifuges from reputable companies will also be acceptable, if they comply with the below listed Performance and Features.</li> <li>• The offered units will not be more than 5 years old at the start of the contract. In case of older centrifuges, the OEM COC (Certificate of Compliance) will be required, but even then, the centrifuges will not be more than 10 years old at the start of the contract.</li> <li>• Minimum fluid processing capacity will be 10% of the total circulating volume of a non-weighted mud system and no less than 5% of the total circulating volume of the weighted mud system.</li> <li>• Fully Hydraulic Drive centrifuges will be preferred, however Variable Frequency Drive units will be acceptable.</li> <li>• Only positive displacement or progressive cavity feed pumps will be acceptable.</li> <li>• A minimum of four, trained operator will be available to operate the centrifuges, they will have an OEM training certificate.</li> <li>• Daily performance report for the centrifuges will be provided to the OM on rig site. Mud Engineer or company man will have the right to get the centrifuges changed if they are not happy with the performance.</li> <li>• Centrifuges and pumps will have all the OEM listed spare parts available on rig site.</li> <li>• The electrics on the centrifuges and their pumps should comply with UL Class 1, Division 1, Groups C and D. Zone 1 EEXD IIB T3</li> </ul>	
NOTE:-	<p>Mud system to be capable and compatible to handle all types of mud including OBM, WBM, polymer etc. and waste management. Any equipment not performing as per tender requirement will be immediately replaced by contractor or hired through third party rental cost paid by the rig contractor.</p>	
D3	<p><b><u>‘Poor boy’ mud/ gas separator</u></b></p> <ul style="list-style-type: none"> <li>• Manufacturer and type</li> <li>• Maximum pressure 20 bbls minimum</li> </ul> <p>Gas vent line detail Must go to flare pit</p> <ul style="list-style-type: none"> <li>• Number and size</li> <li>• Height/position of discharge point</li> <li>• Drive</li> <li>• Motor speed/horsepower</li> <li>• Impeller size available</li> </ul>	
D4	<p><b><u>Other Mud Equipment</u></b></p> <ul style="list-style-type: none"> <li>• Facilities to handle completion brines loading, Unloading, Storage</li> <li>• Diaphragm pump to carry out dead volume of WBM &amp; OBM from mud tank</li> <li>• Ability to pump mix water, mud etc. to cement unit from L.P System.</li> </ul>	
D5	<p><b><u>Mud Testing Laboratory</u></b> <b><u>Required</u></b></p> <ol style="list-style-type: none"> <li>i) Mud cabin size 8ft’ x 8ft’a minimum placed on mud tanks with sink &amp; water, 3 mud balances, electricity, Marsh funnel with chronometer etc.</li> <li>ii) Mud lab complete with all mud rheology testing Equipment in one caravan containing portion for lab cum office &amp; 2nd portion for residential purpose with bath.</li> </ol>	

**SECTION E : BLOWOUT PREVENTION AND DRILL FLOOR PROTECTION**

ITEM NO	OGDCL REQUIREMENT	BIDDER'S OFFER
	<p><b><u>Important Notes</u></b></p> <ul style="list-style-type: none"> <li>• BOPs e.g. Cameron, Shaffer, or Hydrill etc. or equivalent. BOP should be certified by OEM authorized / API approved workshop and certified to <b>API Std 16AR RSL2</b> which is in accordance to <b>API Std 53, 5<sup>th</sup> Edition, are acceptable</b>. The workshop must be licensed to <b>API 16A, API 6A and API Q1</b> and validity of certification should not be less than 05 years. The CONTRACTOR must have in place and carry out the manufacturer's recommended preventive maintenance program for all BOP equipment. Such program(s) are to be made available to COMPANY upon request. Each BOP stack shall be cleaned, visually inspected and serviced after every nipple down. All elastomers exposed to well fluids shall be changed at a minimum of every 30 months, unless visual inspection show the elastomers need to be replaced before this time.</li> <li>• Meeting Latest API Standard and API approved BOP manufacturer is required.</li> <li>• All Blow out Prevention equipment must meet API RP53 and NACE MR-01-75 (revision) Specification for H2S service. Manufacturer's certification of H2S service rating is required.</li> <li>• All the BOPs elastomers must be compatible /Usable with oil base mud (OBM). All Elastomers to be replaced at the time of commencing the Contract</li> <li>• A service life history of only 01 year of BOP is required from CONTRACTOR detailing BOP stack service, repair records as incidence of exposure if BOP equipment suffered H2S environment.</li> <li>• All replacement parts, fasteners and seal elements for BOP equipment under contract to COMPANY must be manufactured by the original equipment manufacturer (OEM).</li> <li>• Complete traceability of all BOP parts, fasteners and seal elements must be maintained by CONTRACTOR and supplied to COMPANY upon request.</li> <li>• Bidder to ensure that complete set of equipment is provided in working condition including but not limited to the list of equipment and their respective specs mentioned in this document that are deemed necessary to carry out company's operations as per best industry practices &amp; regulations. DSAF/spacer spools and drilling spools, rings, nuts/studs. Necessary flanges/fittings for all bore sizes</li> <li>• All BOP seal elements are to be stored per manufacturer's recommendations as to:             <ul style="list-style-type: none"> <li>(a) Sunlight exposure</li> <li>(b) Temperature and moisture control</li> <li>(C) Dust, and other contamination protection</li> <li>(D) Areas of electrical current generation.</li> </ul> </li> </ul>	



E1.1	<p><b><u>21-1/4" x 2000-5000 PSI (Annular Preventer)</u></b></p> <p>Reputable manufacturer</p> <ul style="list-style-type: none"> <li>• Manufacturer</li> <li>• Model &amp; WP</li> <li>• No of cavities</li> <li>• (flanged connection)</li> <li>• Gasket No.</li> <li>• Sealing element type &amp; model</li> <li>• Bell nipple for above BOP</li> </ul>	
E1.2	<p><b><u>21-1/4" x 5000 PSI (Ram Preventer, Double unit)</u></b></p> <p>Reputable manufacturer (mandatory)</p> <ul style="list-style-type: none"> <li>• Manufacturer</li> <li>• Model &amp; WP</li> <li>• No of cavities</li> <li>• Top &amp; bottom connection</li> <li>• Gasket No.</li> <li>• Rams 5-1/2", 5", 13-3/8", Shear Ram for at least 5-1/2" DP grade S &amp; Blind, one set of variable rams (2-7/8"x 5")</li> <li>• Spacer Spool 21-1/4" – 5000 PSI, height 3-4' with 2 x sides outlets 4-1/8"-5k filled with blind flanges.</li> </ul>	
E1.3	<p><b><u>13 5/8" x 5000 PSI WP (Annular Preventer)</u></b></p> <p>Reputable manufacturer</p> <ul style="list-style-type: none"> <li>• Manufacturer</li> <li>• Model &amp; WP</li> <li>• Bottom connection &amp; gasket No.</li> <li>• Gasket No.</li> <li>• Sealing element type &amp; model</li> </ul>	
E1.4	<p><b><u>13 5/8" x 10000 PSI WP (Ram type preventer – 01 single stack + 1 x double stack) complete with all accessories (Mandatory)</u></b></p> <ul style="list-style-type: none"> <li>• Manufacturer</li> <li>• Model &amp; WP</li> <li>• Number of cavities Dual</li> <li>• Rams 3-1/2", 5", 5-1/2", 7", 9 5/8" casing rams</li> <li>• Shear Ram for at least 5-1/2" DP grade S &amp; Blind, one set of variable rams (2-7/8"x 5") (4-1/2" x 7")</li> <li>• Top and bottom connections</li> <li>• Clamp No. and gasket No.</li> <li>• Spacer spool 13-5/8"-10000Psi, height 3'-4' with 2xsides outlet 4-1/16"-10K fitted with blind flanges to adopt to EMPLOYER'S well head</li> </ul>	

ITEM NO	OGDCL REQUIREMENT	BIDDER'S OFFER	
		Operating day	Stand by day
E1.5	Annular Blowout Preventer Assembly (Diverter) 29-1/2"-500 PSI W.P Quantity 01 No.		
E1.5.1	Drilling Spool 29-1/2"-500 PSI x 29-1/2"-500 PSI W.P, overall height ±1 (One) meters with two (02) side outlets in accordance with API specs 16A Complete with studs and nuts, ring gaskets. Quantity 01 No.		
E1.5.2	Ball valve hydraulic operated to connect with side outlets of drilling spool 29-1/2"-500 PSI double flanged having 1" NPT connection for hydraulic operation stainless steel lined ring grooves, Complete with studs, nuts, ring gaskets. Quantity 01 No.		
E1.5.3	Weld Neck Flange 29-1/2"-500 PSI, stainless steel lined ring grooves, in accordance with API specs 6A, PSL-1, Temp Class U, Material Class AA, Complete with studs, nuts & ring gaskets. Quantity 01 No.		
E1.6	Blowout Preventor Assy. 01 x Ram type double unit 26-3/4"-3000 PSI W.P. and 01 x Annular type with flanged top and bottom, stainless steel lined ring grooves, with drilling spool with two(02) sides outlets 4-1/16"-3000 PSI fitted with blind flanges having manual locking screws and hand wheels in accordance with API spaces 16A, T-20 Temp rating Complete with 5" & 5-1/2" drill pipe ram, 18 5/8" casing ram assembly & blind ram assembly, studs and nuts, ring gaskets and with all allied accessories. Quantity 01 No.		
E1.7	<b>Additional Well control equipment</b>	Operating day	Stand by day
	<b>13 5/8"- 15,000 PSI WP complete stack 02 x Ram type preventer (Double Stage Unit and 01x Ram type preventer Single stack plus 01x Annular with all accessories and rams (It is mandatory to quote the Rates separately for all additional items and it is mandatory to provide the additional item as requested by the company within 60 days of call out/ mobilization notice)</b>		
	<b>E1.7.1 Choke line, associated valves to Choke manifold system of 15,000 Psi with Kelly valves of 15k Psi (It is mandatory to quote the Rates separately for all additional items and it is mandatory to provide the additional item as requested by the company within 60 days of call out/ mobilization notice)</b>		
	<b>E1.7.2 Kill line, associated valves to kill manifold system of 15,000 Psi (It is mandatory to quote the Rates separately for all additional items and it is mandatory to provide the additional item as requested by the company within 60 days of call out/ mobilization notice)</b>		
	<b>E1.7.3 11 3/4" RAM assembly with Packer for 13 5/8"- 10K (Ram BOP – Triple Unit). (It is mandatory to quote the Rates separately for all additional items and it is mandatory to provide the additional item as requested by the company within 15 days of call out/ mobilization notice)</b>		

ITEM	OGDCL REQUIREMENT	BIDDER'S OFFER	
E1.8	<p><b><u>Following Single stack RAM BOPS (Additional)</u></b>  <b><u>Bidder will provide three quotations from local market when required</u></b></p> <ul style="list-style-type: none"> <li>• Single ram BOP 26-3/4" – 3k with 2 outlets 4- 1/8"-3K complete with pipe rams for standard drill string in use ring gasket and other allied accessories. 01 SET</li> <li>• Single Ram BOP 21-1/4" X 5000 PSI with 2 outlets 4-1/8" – 5000 PSI with 5" DP ram &amp; 14" casing rams, ring gaskets &amp; other allied accessories. 01</li> </ul>	Operatin g day	Stand by day
E2	<b>Kill and choke lines</b>		
E2.1	<p>Choke lines size and working pressure manual gate valves hydraulically operated gate valve</p> <p>01 choke line is required; each with 4 1/16" x 10,000 WP with one manual valve and one hydraulically operated gate valve (manual override per choke line). 01 spare HCR valve 4-1/16" x 10,000 PSI with gate valves</p>		
E2.2	<p><u>Kill line</u></p> <p>1 kill line required 2-1/16" x 10,000 psi WP with one check valve, one manual gate valve, and one hydraulically operated gate valve (with manual override and 1 test flange with 2-1/16"-10,000 PSI chickens lines</p>		
E2.3	<ul style="list-style-type: none"> <li>• Kill and choke hoses</li> <li>• Kill hose length type size</li> <li>• Choke hose length type and size</li> </ul> <p>Coflexip 10,000 PSI WP or equiv. Coflexip 10,000 PSI WP or equiv.</p>		
E3	<p><u>BOP ' s Control Equipment</u></p> <ul style="list-style-type: none"> <li>• Surface control equipment</li> <li>• Manufacturer &amp; type</li> <li>• Air powered pump</li> <li>• Output GPM &amp; pressure</li> <li>• Air pressure required</li> <li>• Electric powered pump</li> <li>• Horse power</li> <li>• Output &amp; pressure</li> <li>• Accumulators</li> <li>• Capacity &amp; working pressure</li> <li>• Hydraulic fluid reservoir</li> <li>• Capacity</li> <li>• Location of master control panel</li> <li>• Location of remote control panel</li> </ul> <p>BOP Control system to be sized such that with the pumps out of service, 1200 psi (200 psi above pre charge) remains after completing the below given cycle. Contractor must provide calculations demonstrating that the BOP control unit complies with the above sizing BOP requirements.</p> <ol style="list-style-type: none"> <li>1. Closing bag and all rams type preventers.</li> <li>2. Opening bag and all rams type preventers.</li> <li>3. Closing again the bag type and one ram type preventer.</li> </ol> <p>There must be at least two sets of remote controls for operating the accumulator to activate the BOPs. One remote control must be on the rig floor, accessible to and visible by the driller and the other should be located near the Company Representative's office. The Master Controls shall be at the accumulator.</p>		

	The operating control lever for the Shear Blind Rams (SBR) on the accumulator unit as well as the remote stations shall be secured with an audible alarm activated cover to prevent accidental operation of the SBR. Low pressure warning light (to indicate hydraulic leaks) should be installed on the unit as well as on driller's console.	
E4	<p><u>10,000 PSI WP Choke Manifold</u></p> <ul style="list-style-type: none"> <li>• Manufacturer Pressure Rating Manual adjustable choke manufacturer &amp; number.</li> <li>• Hydraulic operated choke manufacturer and number</li> <li>• Gate valve details, size, type pressure rating</li> <li>• Upstream, downstream line size</li> <li>• Buffer chamber</li> <li>• Piping to vertical degasser</li> <li>• Piping to side flares</li> <li>• Annulus pressure gauge</li> <li>• Stand pipe pressure gauge</li> </ul> <p>H2S service 10,000 PSI WP minimum one automatic choke two manual (adjustable or fixed) chokes remote control system in driller's cabin.</p> <p>Shelter Schematic drawing required.</p>	
E5	<p><u>BOP 's plug and cup type testers</u></p> <ul style="list-style-type: none"> <li>• Plug type testers</li> <li>• Cup type testers (All OGDCL casing size)</li> <li>• Casing rams</li> </ul> <p>for Employer's casing sizes and Contractors casing rams</p>	
E6	<p><u>BOP' s test pump</u></p> <ul style="list-style-type: none"> <li>• Manufacturer</li> <li>• Type</li> <li>• Output and pressure rating 15,000 PSI WP</li> </ul>	
E7	<p><u>BOP handling equipment</u></p> <p>Trolley to lift BOP + riser and adaptor to well head with safe system to service BOP when lifted.(Certification required)</p>	
E8	<ul style="list-style-type: none"> <li>• <u>Drop in valves</u></li> <li>• Hydril drop in check valves</li> <li>• Size</li> </ul> <p>Number One Each To suit different sizes of One each CONTRACTOR"s drilling string</p>	
E9	<p>Bidder to provide all the required Drilling Spools, X-over spools, Spacer spools, DSAFs, required to carry out company's work program. (Furnish specs with inventory count)</p>	

**SECTION F: DRILL STRING**

ITEM NO	OGDCL REQUIREMENT	BIDDER'S OFFER
<p>F1</p> <p>F2</p>	<p>Bidder to provide and maintain separate tubular inventory for each offered rig. Meeting Latest API Standard.</p> <p><b><u>5" Drill Pipe</u></b>                      5" OD, 19.5 lbs/ft, 4 -1/2" IF drill pipe with 18<sup>o</sup> taper friction welded tool joints 6-5/8" OD [03][04][05][r6]with Internal Plastic Coating. Boxes, Heat treated with quenching and Tempering to the requirement of NACE standard MR-01-75 For H2S use Hard facing required with steel protectors Manufacturer.                      New or premium                      2000 m, 19.5 lb/ft, G 105/ S-135, 4-1/2" IF New or Premium &amp;</p> <p><b><u>5" Drill Pipe Pup Joints</u></b></p> <p>AS above</p> <ul style="list-style-type: none"> <li>• 10 feet Mandatory</li> <li>• 20 feet 2 each</li> <li>• Manufacturer Mandatory 2 each</li> </ul>	
<p>F3</p> <p>F3.1</p> <p>F3.2</p> <p>F3.3</p> <p>F.3.4</p>	<p><b><u>5 1/2" Drill Pipe (Mandatory). Note: - 5-7/8" drill string is also acceptable. Bidder to provide complete specs.</u></b></p> <p>5 1/2" OD, 21.90 PPF, Connection XT-54 or equivalent, TJ OD = 6-5/8", TJ ID=4", drill pipe Internal Plastic coating lining. Boxes, Heat treated with quenching and Tempering to the requirement of NACE standard MR-01-75 For H2S use Hard facing required with steel protectors Manufacturer.                      New or premium                      21.90 PPF, S-135 IEU, 3000 M Length                      21.90 PPF, G-105 IEU, 2000 M Length</p> <p><b><u>5 1/2" Drill Pipe Pup Joints (Mandatory of drill pipe grade)</u></b></p> <p>AS above</p> <ul style="list-style-type: none"> <li>• 10 feet Mandatory</li> <li>• 20 feet 2 each</li> <li>• Manufacturer Mandatory 2 each</li> </ul> <p><b><u>5 1/2" Drill Pipe Handling equipment</u></b></p> <p>All suitable 5 1/2" D.P handling equipment including slips, elevators, tongs, safety clamps, lifting subs etc along with necessary fishing tools should be provided.</p> <p><b><u>4" Drill Pipe &amp; Its Handling equipment (Additional)</u></b>  <b><u>Bidder will provide three quotations from local market when required</u></b>                      4" OD, 15.70 PPF, XT-38, TJ OD 4-3/4", TJ ID 2-11/16" or 14 PPF, XT-39, TJ OD 4-7/8", TJ ID 2-11/16"[07] drill pipe Internal Plastic coating lining. Boxes, Heat treated with quenching and Tempering to the requirement of NACE standard MR-01-75 For H2S use Hard facing required with steel protectors Manufacturer.                      New or premium                      15.70 PPF or / 14 PPF, G-105 / S-135 = 2000 M Length</p>	

<p>F4</p>	<p><b><u>3-1/2" drill pipe</u></b></p> <p>3-1/2" OD, 13.3 PPF, 3-1/2" IF drill pipe with 18<sup>0</sup> Taper tool joint 4 3/4" OD with steel thread protectors, TJ ID = 2-11/16"</p> <p>Smooth or ground flush hard facing</p> <p>New or premium &amp;</p> <p>3-1/2" DP, 13.3 PPF, G105/ S-135 = 2000 M length</p>	
<p>F4.1</p>	<p><b><u>3-1/2" drill pipe pup joints</u></b></p> <p>Same as above</p> <p>10 feet long</p> <p>20 feet long 2 each</p>	
<p>F5</p>	<p>2-7/8" HT Pac drill pipes with tool joint O.D 3-1/8", ID 1-1/2" 10.4PPF on as and when required (These are to be covered under Rig day rate)</p> <p>QTY. 2000 M</p>	
<p>F6</p>	<p><b><u>Heavy weight drill pipe</u></b></p> <ul style="list-style-type: none"> <li>• Manufacturer and type</li> <li>• Range, Grade and weight</li> </ul> <p>5-1/2"/ 6-5/8" OD (30 Joints) Mandatory</p> <p>5"x50 lb/ft x 4-1/2" IF pin &amp; box (30 joint minimum)</p> <p>3-1/2"x 25.30lbs/ ft x 3-1/2" IF pin &amp; box (30 joints minimum)</p>	

ITEM NO	OGDCL REQUIREMENT	BIDDER'S OFFER
F7	<b>Drill Collars</b> (Only with fish neck)	
F7.1	11" or 11-1/4" DC, 298.7 PPF, ID 3", 7-5/8" [08]REG CONNECTION 06 Joints minimum	
F7.2	9-1/2"/9" x 3" ID x 7-5/8" Reg pin x box connection. Drill collars Spiral/No wall stick, with slip recess. Each joint be 30 feet long. 12 joints minimum	
F7.3	• 8" x 2-13/16" ID x 6-5/8" Reg. pin & box connection. Drill collars Spiral/No wall sticks, with slip recess 30 joints minimum	
F7.4	• 6-1/4" DC with 4" IF pin x box connection. Spiral/ No wall stick with slip recess • 30 joints minimum	
F7.5	• 4 3/4" OD x 2 1/4" ID DC with 3 -1/2" IF pin x box connection. spiral/No wall stick with slip Recess 30 joints minimum	
F7.6	• 3-1/8" OD x 1-1/8" ID DC with PAC connection. Pin x box spiral with slip recess 21 joints minimum	
F7.7	• 3-1/8" HT Pac drill collar with 2-7/8" HT Pac Connections on as and when required basis. QTY. 600 M and it is mandatory and cost will be included in day rate.	
<b>F8</b>	<b>Short DC's (Must match in size &amp; correction for F7.1 to F7.5)</b>	
F8.1	9-1/2" DC 1 X 10 feet 1 x 15 feet 1 x 20 feet	
F8.2	8" DC 2 x 10 feet 2 x 15 feet 2 x 20 feet	
F8.3	6-1/4" DC 2 x 10 feet 2 x 15 feet 2 x 20 feet	
F9	<u>Bit subs</u> All bored for float  To accommodate, 8-5/8" REG, 7-5/8" REG, 6 5/8" REG, 4 -1/2" REG, 3 -1/2" REG bit connections	
F10	<u>Crossovers</u> One lot including spares of cross over subs to accommodate all down hole equipment, with steel thread protectors.	
F11	<u>Float Valves</u> Float valves for all drill collar sizes	
F12	<u>Casing scraper</u> For employer's casings as per Employer's 'outline of casing program' i.e. 5", 7", 9 5/8", 13 3/8 etc.	
F13	<u>Drilling jars (Hydro Mechanical Drilling) (Optional)</u> • Size & Type 8", 6-1/4", 4-3/4" • Number 02 each size	
F14	<u>Stabilizers (1 Near Bit + 2 String) with back up</u> All standard stabilizers (28", 26", 22", 17 1/2", 17", 12 1/4", 8-1/2", 6" and, 5-7/8")	

**SECTION G: HANDLING EQUIPMENT**

ITEM NO	OGDCL REQUIREMENT	BIDDER'S OFFER
G1	<p><b><u>DP/ DC Handling equipment</u></b></p> <ul style="list-style-type: none"> <li>• DP elevators &amp; slips</li> <li>• 5" DP</li> <li>• 3-1/2" DPs</li> <li>• 2-7/8" DP</li> </ul> <p>350 tons to 500 tons, 02 Nos. each</p> <p><u>DC elevators</u> For all sizes of DCs. To suit contractor DC's. two sets each</p> <p><u>DC slips</u> 11", 9-1/2", 8", 6-1/2", 4-3/4", 3-1/8" DCs To suit contractor DP &amp; DC including tongs for 9 -1/2" DC's.</p> <p><u>DC &amp; DP tongs</u> All sizes.</p> <p><u>Safety clamps</u> To suit contractor string</p> <p><u>Lifting subs D P and DC's .</u> To suit contractor DP &amp; D.C As per requirement</p>	
G2	<p><b><u>MISCELLANEOUS</u></b></p> <p><u>Circulating head and swivel,</u> 1 for 5-1/2" Drill pipe 1 x 4 -1/2" IF x 2" 1 x 3 -1/2" IF x 2"</p> <ul style="list-style-type: none"> <li>• 5"1/2" Gray valve + x - over to 3-1/2" DP</li> <li>• Fast shut-off coupling to fit contractor drill pipes as per requirement</li> <li>• Mud bucket Complete with single &amp; discharge hose for drill pipes (min 02)</li> <li>• Kelly mud saver sub Min 02</li> </ul> <p>Wireline cutter 01 No.</p> <ul style="list-style-type: none"> <li>• Casing cutter suitable to all size of casings 01 No (Pneumatic) (acetylene cutter is not acceptable)</li> <li>• Bit breakers &amp; bit gauges for 28", 26", 22", 17-1/2", 12 1/4", 8 -1/2", 6", 5-7/8", 4-1/8" or as per well plan</li> </ul> <p><u>Tools kit</u> Complete for drill crew including hammers, Chain tongs, pipe wrenches etc.</p> <ul style="list-style-type: none"> <li>• DC lifting subs</li> <li>• Sizes 11"/11-3/4", 9-1/2" / 9", 8", 6-1/4", 4-3/4", 3-3/8" &amp; 3-1/8" OD</li> </ul>	

**SECTION H : FISHING EQUIPMENT**



ITEM NO	OGDCL REQUIREMENT	BIDDER'S OFFER
H	<p>Basic Fishing equipment for the relevant drill string in each hole section should be available at well site prior to commencement of the Drilling phase.</p> <p>Bidder to provide all necessary basic fishing tools for its own down hole items. Bidder to submit a list of all Fishing tools available separately as part of the response to this ITT, Section H: Fishing Tools. Bidder will be responsible for timely providing basic Fishing tools for its down hole components / tubular on timely basis. OGDCL will provide fishing tools for its down hole component / tubular.</p> <p>Note: - Basic fishing tools are as under:</p> <ol style="list-style-type: none"> <li>1. FS Overshots with guides/ extensions including basket/spiral grapples with complete accessories &amp; associated XO &amp; subs.</li> <li>2. Standard Fishing Magnets with over size guides for all hole sizes.</li> <li>3. Standard Reverse Circulation junk baskets</li> <li>4. Impression block for all hole sizes</li> <li>5. Screw in subs for all REG, IF, XT &amp; related connections of tubulars.</li> </ol>	

**SECTION I: INSTRUMENTATION AND RECORDING EQUIPMENT**

ITEM NO	OGDCL REQUIREMENT	BIDDER'S OFFER
11	<p>Gauges Martin Decker / Totco or equivalent</p> <ul style="list-style-type: none"> <li>• Manufacturer</li> <li>• Make and Type</li> <li>• Weight Indicator</li> <li>• Mud Pressure Gauge</li> <li>• Torque Indicator Type</li> <li>• Pump (SPM) Type</li> <li>• Rotary (RPM) Type</li> <li>• Wireline Anchor, Manufacturer &amp; Type</li> <li>• Tong Torque Indicator</li> </ul>	
12	<p><u>Flow meter (Flow-show)</u></p> <ul style="list-style-type: none"> <li>• Manufacturer &amp; Type</li> <li>• Main Characteristics</li> <li>• Recorder</li> </ul>	
13	<p><u>Pit level Indicator</u> Manufacturer &amp; Type Recorder Mandatory in all active pits Complete with Totalizer High and low level alarm</p>	
14	<p><u>Tong Torque Indicator</u> Manufacturer and Type</p>	

15	<u>Parameters Recorder (mandatory)</u> 7 Channel simultaneous Mandatory Manufacturer and Type <ul style="list-style-type: none"> <li>• Number of Channels</li> <li>• Parameters Recorded Flow recorder</li> </ul>	
16	<u>Deviation Surveying Equipment</u>  Meeting Latest API Standard TOTCO – floating type/ Hydraulic float  Manufacturer & Type <ul style="list-style-type: none"> <li>• OD to pass through wash pipe</li> <li>• Accessories</li> <li>• Range-I 0-8<sup>0</sup></li> <li>• Range-II 0-16<sup>0</sup></li> <li>• Retrieving Tools</li> <li>• Equipment useable in 5-7/8" hole</li> </ul>	
17	Slick line unit with 25,000ft. along with depth meter	

**SECTION J: AUXILIARIES**

J1	<u>Cutting and Welding Equipment</u>  Make and Type Minimum two oxygen & Acetylene cuttings sets (i.e. 02 cutting sets) and 03 welding sets to be made available on deck (i.e. 03 cutting sets). One each of fix & mobile Electric Welding Plant of suitable rating <ul style="list-style-type: none"> <li>• Description</li> <li>• Accessories</li> </ul>	
J2	<u>Air compressors</u> Number At least 02Nos rotary screw compressor to next requirement of all pneumatic equipment to meet the requirement of air consumption at rig during cold start <ul style="list-style-type: none"> <li>• Make and Type</li> <li>• Power supply &amp; Pressure</li> <li>• Air Receiver</li> <li>• Location</li> </ul>	
J3	<u>Chiksan Hose</u> Type FMC or equivalent <ul style="list-style-type: none"> <li>• Size</li> <li>• Test Pressure 5000-1000 PSI</li> </ul> Number As per operational requirement	
J4	Doghouse Size As per rig design	
J5	Workshop Size As per rig design	
J6	Store House Size As per rig design	
J7	Fuel Tank min 150,000-200,000 Ltrs	

J8	<p>Transportation &amp; Lifting facilities</p> <p>Crane (40 tons) and one fork lifter (05Tons) along with two full time operators one for each vehicle. Sufficient Capacity to lift CONTRACTOR's and Company's equipment &amp; one oilfield truck with winch, gin poles etc.</p>	
J9	<p>Storage of Employer's items</p> <p>One large size container with storage facility for Employer's items at the rig site.</p>	
J10	<p><b><u>Camp &amp; catering</u></b></p> <p>Hard camp &amp; catering for all CONTRACTOR's personnel &amp; 30 sub-contractor/ employer's personnel. In the camp independent and sound proof partitioned sleeping caravans for company and its service provider company's representatives to be ensured. Camps to be air conditioned with wash Rooms facilities, refrigerated Storage, Water treatment etc. living quarters &amp; Office facilities (including sanitation, Sleeping &amp; showers) for company's Supervisor &amp; Geologist, Drilling Engineer, Mud Engineer &amp; Junior staff at site.</p>	

**SECTION L: SAFETY EQUIPMENT**

ITEM NO	OGDCL REQUIREMENT	BIDDER'S OFFER
L1	<p>Rig site fire extinguishers, chemical trolley, Camp site extinguishers, H<sub>2</sub>S &amp; hazardous gas Detectors, compressed air breathing apparatus, Safety clothing, personal protective, warning Sign etc. As per standard practice for drilling of oil &amp; gas wells.</p> <p>To confirm in the bid, the compliance of safety regulations of central inspectorate of mines act for oil &amp; gas industry in Pakistan. The contractor is to take full responsibility for the Compliance of the act in true spirit</p>	

**SECTION M: RIG POWER & TYPE**

ITEM NO	OGDCL REQUIREMENT	BIDDER'S OFFER

M1	<p><u>Rig Power</u></p> <p>i) Complete power system consisting of diesel driven generator sets supplying DC and AC power (or alternatively using an SCR system).</p> <p>CONTRACTOR must specify following:</p> <p>Each Gen-Set Type</p> <p>Each Gen-Set real output Power</p> <p>Each Gen-Set Year of Manufacturer</p> <p><u>Note:</u> The Diesel Engines must be Caterpillar 3500 series or equivalent. Bidder to submit Job detail of last Major overhaul for all Rig Engines. If Major overhaul is not due submitting the job details of last overhaul and Engine hours.</p> <p>Bidder to confirm implementing OEM recommended overhauling program.</p> <p>Bidder to confirm procuring OEM spare parts only.</p> <p>A Certified fuel monitor to be installed on the Rig and Camp engines that must be certified on a six monthly basis and first time prior to first spud by a reputable third party inspection company (SGS/BV etc.) and monthly report to be submitted to OGDCL representative.</p>	
M2	<p><u>Rig Type &amp; Style</u></p> <p>Western skid mounted land drilling rig Diesel electric</p>	
M3	<p><u>Drive Mode of Rig</u></p> <p><u>AC-SCR-DC, AC-VFD-AC</u></p> <p>The specified power has to be the effective (real) output power.</p>	
M4	<p><u>VFD House/ SCR house</u></p> <p>Capable to handle sufficient power supply during drilling operations of respective rig.</p>	
M5	<p>Exhaust gas and noise emission of engines to be within the limitations allowed by the local environmental regulations.</p> <p>CONTRACTOR shall provide the test certificates before commencement of spud in.</p>	
M6	<p>a) Sufficient DC power must be available to control and power simultaneously two mud pumps and the rotary table or Top Drive both at full load and the draw works at half load. The calculations shall be attached.</p> <p>Total available power: ___ KW (___ HP)</p> <p>Calculation: <math>2 \times \text{HP (MP)} + \text{HP (TD)} + \frac{1}{2}\text{HP (DW)} = \text{HP}</math></p> <p>One backup generator on top of maximum anticipated load and one additional emergency generator</p> <p>b) Sufficient AC-power must be available to run all the AC motors at full load and provide lighting at the same time, simultaneously with the DC power required in point a) above;</p>	
M7	<p>Contractor to provide additional power for additional services (solid control equipment, H2S etc.) on as and when required basis</p>	
<b><u>NOTE:-</u></b>	<p><b>• The bidder will ensure availability of complete inventory as per offered bid at the rig site during physical inspection and prior to spud of first well for OGDCL by professionals from Drilling department prior to mobilization of the rig or after arrival of Rig at well site.</b></p>	

**HIRING OF DRILLING RIG SERVICES FOR WELL/WELLS  
PERSONNEL, EQUIPMENT AND SERVICES FURNISHED BY  
COMPANY AND CONTRACTOR**

The personnel, equipment, materials, supplies, consumables and services listed below, shall be provided by the party and at the expense of the Party hereto as designated by the appropriate number; -

<b>DEFINITION</b>	<b>CATEGORY</b>
Provided by CONTRACTOR, paid by CONTRACTOR covered in contract	1
Provided by CONTRACTOR, paid by COMPANY plus handling charges.	2
Provided by CONTRACTOR, paid by COMPANY, no handling charge.	3
Provided by COMPANY, paid by COMPANY.	4
Provided by COMPANY, paid by CONTRACTOR	5

<b>PERSONNEL</b>	<b>CATEGORY</b>
Personnel as per Annexure-A3 & A4.	1
Personnel not included in Annexure-A3 above but necessary for CONTRACTOR's normal operations of the Drilling Unit.	3

<b>EQUIPMENT</b>	<b>CATEGORY</b>
Wellhead	4
Drilling Rig, camp and equipment as per Annexure-A1.	1
All maintenance, repairs and spares for Drilling rig as per Annexure-A1	1
Geological and mud logging cabin and equipment	4
Electrical logging	4
Well testing surface equipment: i.e. burners, separators test tank, flow meter burner booms.	4
Drill stem testing and formation testing tools	4
Production wire-line tools	4
Telephone/fax at Islamabad in Company's office	4
All necessary tools to undertake maintenance of the Drilling Rig and other CONTRACTOR's supplied items.	1
Personal safety equipment including H2S	1
Standard welding equipment on board	1
Cementing Unit.	4

<b>EQUIPMENT</b>	<b>CATEGORY</b>
Cementing associated piping/manifold available on rig.	1
Circulating casing heads	1
Cementing Casing heads.	4
Mud laboratory with standard equipment.	1
Connectors / adapters / drilling spools, ring gaskets necessary to fit CONTRACTOR's BOP stack to COMPANY's wellhead.	1
BOP handling, running, testing equipment	1
Handling and running casing tools and casing scrapers.	1
Handling and running tubing tools	4
DP and DC with subs, handling & standard fishing tools Set of reamers, hole openers, stabilizers	1
All subs, x-oversubs, junk subs, bit subs, lifting subs, handling and running tools, with adequate fishing neck, for down hole equipment	1
Standard fishing tools for down hole equipment as mentioned in Annexure-A1, Section-H.	1
Bit breakers and bit gauges	1/4
Special fishing tools other than above	4
All standard and odd sizes stabilizers as per well plan	1
Containers/baskets for supplies and for all garbage (COMPANY and CONTRACTOR).	1
Equipment owned by CONTRACTOR, not included in Annexure-A1, but existing on the Drilling Rig.	1
Equipment not here above designated but necessary for CONTRACTOR's normal operation of the Drilling Rig.	1
Equipment not here above designated but required to COMPANY's Satisfaction.	4

<b><u>CONSUMABLES / SPARES</u></b>		<b>CATEGORY</b>
- Fuel		
a)	For Drilling rig & camp during the operational period	4
b)	For Drilling rig before spud in date and after rig release date.	1
c)	For Contractor's onsite vehicles (01 ambulance, 02 Pickups, 01 double cabin for Company man, 01 truck for company equipment (Certified by Company man during the operational period.	4

d)	For Contractor's Crane and Fork lifter during rig operational period.	4
	Lubricants/grease/hydraulic fluids/cleaning solvent for Drilling Rig, Drill pipes, Drill Collars except casing and tubing compound.	1
	Casing and tubing compound	1
	Blow out preventers operating fluids	1
	Cement and additives.	4
	Drilling and completion fluids including chemical and additives.	4
	Drilling/coring bits	4
	Thread protectors for drilling strings and down hole equipment.	1
	Wellheads/wear bushing/Christmas trees/completion equipment/ and necessary associated running tools.	4
	Steel gaskets for CONTRACTOR's BOP connections.	1
	All packers, bridge plugs, cement retainers.	4
	Replacement cost of damaged beyond repair tubulars / BHA components during entire period of contract.	1
	Pipe wipers and drill pipe rubber protectors	1
	Stabilizer/ Roller reamers blades redress	1
	Welding consumables for operations	1
	All necessary consumables to maintain in continuous operation surface equipment belonging to CONTRACTOR.	1
	All necessary spare parts/consumables for gas cylinders (oxygen, acetylene, nitrogen) welding consumables, on board the Drilling Rig.	1
	All mesh sizes of screens & spares for shale shakers, spares for solid control, Equipment, spares for mud pumps.	1
	All necessary spare parts consumables to undertake maintenance or repair of COMPANY's items.	4
	All necessary ropes, cables, wire ropes, chain, slings, shackles, hook blocks on board the rig.	1
	Potable/distilled water with necessary additives/purifiers for CONTRACTOR's and COMPANY's personnel.	1
	Fresh/ industrial water over the rig and camp site.	4

Electrical power and compressed air for COMPANY's use and its Sub-contractors.	1
All necessary safety and protective clothing for CONTRACTOR's Personnel plus 10 extra sets for visitors.	1
Consumables and spares not here above designated but Necessary for CONTRACTOR's normal operation of the Drilling Rig.	1
Consumables and spares not here above designated but required to COMPANY's satisfaction.	4

<b><u>SERVICES</u></b>	<b>CATEGORY</b>
Preparation of location including foundations, cellars and bases and access roads.	4
Surveying of drilling location	4
Operation of the Drilling Rig and any CONTRACTOR's items	1
Compliance of the Drilling Rig with all statutory regulations.	1
Maintenance of the Drilling Rig and other CONTRACTOR's items	1
Safety training for CONTRACTOR's personnel.	1
Accommodation and catering on the Drilling Rig for CONTRACTOR's Personnel and twenty (20) COMPANY's Personnel with three meals.	1
Accommodation and catering on the Drilling Rig for extra COMPANY's Personnel or COMPANY's 3rd party personnel as per requirement (+30 persons)	3
Available First aid medical attention on the Drilling Rig	1
Inspection of CONTRACTOR's items	1
Remedial to any defect following above inspection	1
First inspection of CONTRACTOR's drill string before start of contract.	1
Subsequent inspections of CONTRACTOR's drill string	4
Welding and cutting services on the Drilling Rig	1
All associated formalities related to travel documents Health certification, visas, works permits statutory training etc. for CONTRACTOR's Personnel and their families.	1
Permit and license to operate CONTRACTOR's telecommunication equipment	1
Telecommunications according to CONTRACTOR's Log-book for COMPANY's Personnel	3
Communication services such as V-sat etc.	4
CONTRACTOR's Personnel compliance with safety regulations/training exercise and emergency situation decisions.	1



<b><u>SERVICES</u></b>	<b>CATEGORY</b>
Conventional casing running in services.	1
Specialized casing running in services. (10% handling charges)	2
CONTRACTOR's base/office/warehouse yard/facilities/ transportation/ accommodation etc.... including for families if any.	1
COMPANY's representative office complete with desk, filing cabinet and necessary furniture on the Drilling Rig.	1
Provision of Security on the location upon commencement of mobilization & up to 1 week after Rig is released from the last well of the contract.	4
First rig inspection by certified inspection company of International repute.	1

<b><u>TRANSPORTATION/ HANDLING</u></b>	<b>CATEGORY</b>
Transportation of CONTRACTOR's Personnel between point of Origin and Rig site. (Covered in Mob. Fee)	1
Transportation of CONTRACTOR's Personnel between Drilling Rig and CONTRACTOR's base. (covered in De-mob. Fee)	1
Any transportation of COMPANY's Personnel	1
Double cabin for Company man with driver (Model not older than 5 years)	1
One truck with min 20 feet length and 05 ton capacity for Company equipment	1
Transportation of CONTRACTOR's replacement items between point of origin and Rig site to repair CONTRACTOR's Equipment not reimbursed by COMPANY.	1
Any transportation of COMPANY's items.	4
Other services with associated equipment and consumables:	
• Weather forecasting	4
• Any geological services including mud logging.	4
• Electrical logging.	4
• Mud Engineering.	4
• Cementing and pumping.	4
• Drill stem testing, formation testing.	4
• Production wireline.	4
• Surface producing testing.	4
• Special fishing operation (other than with tools included in Appendix-A 1).	4
Services not here above designated but necessary for CONTRACTOR's normal operations of the Drilling Rig.	1
Services not here above designated but required to COMPANY's satisfaction.	4

**HIRING OF DRILLING RIG SERVICES FOR WELL/WELLS**

**PERSONNEL**

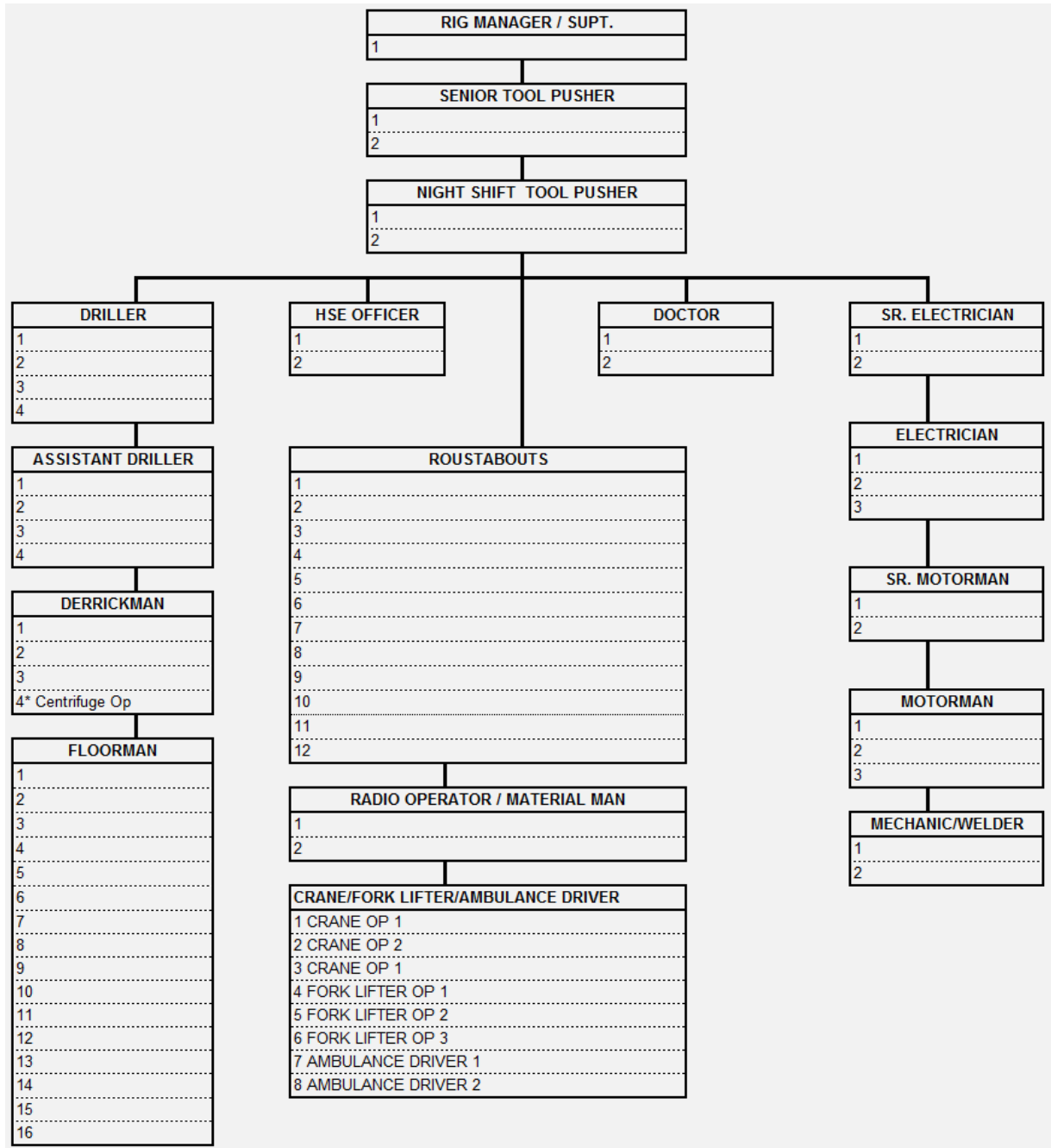
<b>MINIMUM BASE PERSONNEL</b>	<b>MINIMUM NUMBER TO BE POSTED AT A TIME</b>
A) Contract / Operational coordinator	1
B) AT RIG SITE	
Tool Pusher	1
Tour Pusher (Night time duty)	1
Drillers	2
Assistant Driller	2
Derrick man	2
Roughnecks	6
Roustabouts	6
Chief Mechanic	1
Chief Electrician	1
Crane operator	1
Fork Lift operator	1
Welder	1
Asst. Mechanic	1
Asst. Electrician	1
Camp Boss/Time Keeper	1
Motorman	2
HSE professional (Nebosh certified)	1
Medial Doctor	1
Office Staff	
Catering Staff	]
Storekeeper	]
Male Nurse	]
Room Boys	]
Sweepers	]
Drivers & Operators	]

As required by Contractor

**Note**

Drilling Crew to work in 2 shifts of 12 hours per day. This is minimum requirement; COMPANY has the right to ask for additional personnel without extra payment to meet the operational requirement at the rig. Drilling supervisory crew to be fluent in communication in English language.

Contractor to provide Organizational Chart and CVs of the Crew Members on the below given formats:



**1. PERSONNEL QUALIFICATION CARD**

	COMPANY's Request	CONTRACTOR's Offer
<b>Name:</b>		
<b>Date of birth :</b>		
<b>Nationality :</b>		
<b>Marital status :</b>		
<b>Employed on :</b>		
<b>Experience:</b>	12 years relevant experience in drilling/workover operations with 5 years' work experience as Senior Tool Pusher	
<b>Length of service :</b>		
<b>Languages (Read-Write-Speak):</b>	English (Read-Write-Speak)	

<b>Present position :</b>	Senior tool pusher	
<b>Education :</b>	Secondary level	
<b>Vocational training :</b>	Good Computer Skills	
	CONTRACTOR's Well Control and Blow-out Prevention Policies and Procedures	
	Conversant with CONTRACTOR's Shallow Gas Guidelines	
<b>% training requirements met as per tender document:</b>		
<b>% training requirements met as per Contractors internal competency matrix:</b>	Please Share Competency Matrix	
<b>Certificates :</b>	IWCF or Well Cap Supervisor level	
	Stuck Pipe Prevention and Mitigation	
	Rig Floor Safe	
	Fire Fighting	
	Use for Breathing Sets	
	H2S	
	Authorised Gas Tester	
	First Aid	
	Understanding NORM	
	Emergency Response	
	Accident Investigation	
	Supervising Safety Skills	
<b>Professional experience :</b>		
<b>Drilling Experience of Northern Region of Pakistan:</b>		

<b>4. HSE</b>			
<b>SECTION A: HSE POLICY</b>		<b>YES</b>	<b>NO</b>
1.	HSE Manual Submission ONLY	*	
2.	HSE policy only –	***	
3.	Availability of policy statements to Employees	**	
4.	Emergency Response Plan for activities on Location	**	
5.	Confirm to compliance of HSE Training	**	
<b>SECTION B: HAZARD AND EFFECTS ASSESSMENT</b>			
6.	Confirm for the compliance of Hazards and effects assessment.	**	
7.	Confirm for the compliance of Exposure of workforce.	**	
8.	Confirm for the compliance of Handling of chemicals.	**	
9.	Confirm for the compliance of Handling of radioactive sources		

\*\*\* Only policy required

\*\*Only confirmation for compliance required. Do not submit unnecessary data.

### **HIRING OF DRILLING RIG SERVICES FOR WELL/WELLS MINIMUM REQUIRED QUALIFICATIONS OF PERSONNEL**

All rig personnel/ crew will preferably be Pakistani National. However, expat staff can be assigned if the well location does not fall in security sensitive area. In such case Bidder to provide Pakistani national staff. The personnel to be assigned on this work shall be listed under the categories as shown in Annexure-A3 and their basis of acceptance shall be as follows; -

#### **A) Tool Pusher & Tour Pusher**

- Appropriate technical qualification holder from certified institution with 03 years Diploma / Degree related to drilling and well completion.
- Sound health/physical fitness.
- Age 35-60 years.
- 10-15 years drilling experience of which at least 3 years on the Rig similar to those offered by the contractor.
- Minimum of 3 years as Tool Pusher/Tower Pusher.
- Holder of current First Aid Certificate.
- Holder of valid/well control certificate (IWCF or Well Cap) and Stuck Pipe training. Compulsory with documentary proof.
- A course in Oil Field Safety Practices.
- A course in H2S Safety.
- The offered professional should be qualified, experienced, fluent in English language, both oral & written and be also capable of communicating efficiently with all other contractors and company's representatives.

#### **B) Drillers**

- High School Certificate with advance course in drilling and well completion.
- Sound health/physical fitness.
- Age 30 to 55 years.
- 10 years drilling experience of which at least 3 years on Rig similar to those offered by contractor. Minimum of 5 years as Driller.
- Holder of current First Aid Certificate.
- Holder of valid/well control certificate (IWCF or Well Cap) and Stuck Pipe. Compulsory with documentary proof.
- A course in Oil Field Safety Practices.
- A course in H2S Safety.
- The professionals should be qualified, experienced, fluent in English language, both oral & written and be also capable of communicating efficiently with all other CONTRACTORS and company's representatives.

#### **C) Assistant Drillers**

- High School Certificate with course in drilling and well completion.
- Sound health/physical fitness
- Age 25 to 50 years.
- 5 years drilling experience of which at least 2 years on rig similar to those offered by contractor.
- Minimum of 3 years as Assistant Driller.

- Holder of current First Aid Certificate.
- Holder of valid/well control certificate (IWCF or Well Cap) Compulsory with documentary proof.
- A course in Oil Field Safety Practices.
- A course in H2S Safety.
- The offered professional should be qualified, experienced, fluent in English language, both oral & written and be also capable of communicating efficiently with all other contractors and company's representatives.

#### **D) Chief Mechanics**

- First Class Heavy Duty Mechanic Certificate.
- Sound health/physical fitness.
- Age 28 to 58 years.
- Minimum 8 years Mechanic duty on Rig of which at least 3 years on Rig similar to those offered by contractor.
- The offered professional should be qualified, experienced, fluent in English language, both oral & written and be also capable of communicating efficiently with all other contractors and company's representatives.

#### **E) Chief Electricians**

- First Class Electrical Certificate.
- Sound health/physical fitness.
- Age 28 to 58years.
- Minimum 8 year's diesel electric rig experience including S.C.R System of which at least 5 years on Rig similar to those offered by contractor.
- The offered professional should be qualified, experienced, fluent in English language, both oral & written and be also capable of communicating efficiently with all other contractors and company's representatives.

#### **F) Area Manager /Drilling Superintendent**

- Graduate in Engineering/High School Certificate with advance course in drilling and well completion.
- Sound health/physical fitness.
- 15 years experience in drilling of which at least 3 years on Rig similar to those offered by contractor.
- Minimum 5 years experience as Supervisor, 3 years of which should have been with contractor.
- Holder of valid/well control certificate (IWCF or Well Cap) or equivalent and Stuck Pipe.
- A course in QHSE Management System.
- A course in H2S Safety.
- The offered professional should be qualified, experienced, fluent in English language, both oral & written and be also capable of communicating efficiently with all other contractors and company's representatives.

**G) HSE Engineer/ Professional**

- Graduate in Engineering /High School Certificate with advance course in safety. Nebosh Certificate or equivalent is a must.
- Sound health/ physical fitness.
- At least 05 years experience in Safety of which at least 2 years on Rig similar to those offered by contractor.
- Holder of current First Aid Certificate.
- A course in Oil Field Safety Practices.
- A course in H2S Safety.
- The offered professional should be qualified, experienced, fluent in English language, both oral & written and be also capable of communicating efficiently with all other contractors and company's representatives.

**HIRING OF DRILLING RIG SERVICES FOR WELLS  
SCHEDULE OF BID PRICES**

=====  
**COST COMPONENT CHARGES (US\$)**  
=====

Mobilization cost for each rig and availability with firm time break down required for rig move/deployment at OGDCL location. Demobilization Fee in lump sum shall be as per section 3.2 clause 10 in Annexure A1 & RFQ.

Intermove Fee per each 50 KM  
Intermove Fee for 1 KM (without shifting the camp)

**RIG RATES PER DAY (24 HOURS) (To be provided for each rig)**

Operating Rate with Top Drive  
Operating Rate without Top Drive  
Testing/Logging & Miscellaneous rates with top drive & without top drive with crew  
Testing/Logging & miscellaneous rate with top drive & without top drive without crew  
Large size BOPs/Adapter Spool & items day rate for deep depth rig (If offered)  
5-1/2" Drill Pipe  
Location Move Rate with transportation  
Repair Rate  
Remedial Rate  
Force majeure rate with crew and without crew will be zero.

**Note:**

Testing/Logging & Miscellaneous rates should not be more than 90% of operating rate  
Repair Rate should not be more than 80% of operating rate.  
Remedial Rate should not be more than 70% of operating rate

**MEALS RATES EXCEEDING COMPANY'S 20 DESIGNATED PERSONNEL**

Meal cost per meal for Company's designated personnel  
Breakfast cost per meal for Company's designated personnel  
Full board including three meals per day for Company's designated personnel &  
Full board without meals per day for Company's designated personnel

**Note:**

- 1) The definition of above rig rates is stated at in the below mentioned Annexure-A5-1.
- 2) The rates for Senior Mess & Junior Mess to be given separately. These rates will be applicable according to designated professionals.



**RATES, FEES AND OTHER CHARGES**

**Payment by COMPANY**

The COMPANY shall pay to Contractor during the continuance of the contract and according to its terms & conditions the amount due from time to time as calculated below. No other payments shall be due from COMPANY"s other than those specifically mentioned in this contract.

**Daily Rates, Mobilization/Intermove**

The following Daily Rates and lumps sum fees will apply for the well in accordance with the terms and conditions to be specifically defined and thereafter the rates will be applicable. All daily rates given below shall be calculated on the basis of time to the nearest hour.

a) **Operating Rate**

The operating rate with top drive will be US\$\_\_\_\_( ) per 24 hours day and without top drive will be US\$\_\_\_\_\_( ) per 24 hours day and is payable from the date of spudding the well/wells and will continue for the duration of the contract unless superseded by one of the other rates (Including no rate whatsoever) provided that the operating rates will only be payable when draw-works is operative and contractors" drill string is in the hole for well operations and this rate is not in conflict with any other rate in the contract.

b) **Testing/Logging & miscellaneous Rates with & without Crew**

The testing/ logging & miscellaneous rates should not be more than 90% of operating rate.

The rate with crew and top drive will be US \$ \_\_\_\_\_ per 24 hours day basis and without top drive will be US\$\_\_\_\_\_( ) per 24 hours day basis. Standby rate with crew & with top dive will be US\$\_\_\_\_\_( ) per 24 hours day and without crew & without top drive will be US\$\_\_\_per 24 hours day basis and payable during following periods:

- 1) Electric logging operations.
- 2) Production testing (DST etc).
- 3) When waiting for Company's orders or for Company furnished items or any other service
- 4) Suspension of operations during public holidays.
- 5) Any other situation i.e. cementing, waiting on cementing, work on wellhead & waiting on weather.

**c) Mobilization**

i) The mobilization fee will be US\$ \_\_\_\_\_ to move the Rig from Contractors own stacking point / last well location (including inland and abroad) to OGDCL's first well location including the rig up and until the well is ready to spud as per program of the COMPANY. The mobilization fee shall cover all expenses incurred by Contractor before and until the commencement date without any exception, including insurance, transportation expenses, fuel and lubricant, rental of drilling rig and CONTRACTOR's personnel, time taken by COMPANY to inspect the drilling rig and time taken by Contractor to make any modifications to suit contractual requirement.

**d) Location Inter-move Rate**

i) The location move rate will be US\$\_\_\_\_\_ ( ) per 24 hours day plus at cost shifting/moving charge and is payable from the moment of rig release (when the last cement plug has been set on COMPANY's well or rig released as mutually agreed by both the parties), at any drilling location until the rig spuds in at the next COMPANY's location.

ii) Contractor will provide lump sum move rate with respect to distance (pro-rated after 51 km distance) in KM in US\$ which includes transportation and rig time. The rate shall cover all expenses incurred by Contractor from rig release date and until the commencement date at next location without any exception, including insurance, transportation expenses, fuel and lubricant, rental of drilling rig.

S.No	DISTANCE	Rate in US \$
1	Rig mobilization rate lump sum up to 50 km	
2	Rig mobilization rate lump sum within 51 to 100 km	
3	Rig mobilization rate lump sum within 101 to 150km	
4	Rig mobilization rate lump sum within 151 to 200km	
5	Rig mobilization rate lump sum within 201 to 250km	
6	Rig mobilization rate lump sum within 251 to 300km	
7	Rig mobilization rate lump sum within 301 to 350km	
8	Rig mobilization rate lump sum within 351 to 400km	
9	Rig mobilization rate lump sum within 401 to 450km	
10	Rig mobilization rate lump sum within 451 to 500km	
11	Rig mobilization rate lump sum within 501 to 550km	
12	Rig mobilization rate lump sum above 550 km	

Note: OGDCL reserves the right to select either (i) or (ii) above for inter-well Rig moves

iii) Inter-move rate for up to 1 km distance (without shifting the camp) will be US\$\_\_\_\_ ( ).

iv) Contractor reserves the right to pre-move some equipment. Agreement as to

which equipment can be safely pre-moved will be mutually decided by Contractor and Company, such agreement shall not be unreasonably withheld.

- v) Contractor will also move the company office and sleeping containers at rig site as well as all Company's 3rd party's equipment (Mud chemicals, Cementing equipment, Waste management tools, mud logging equipment, Company's containers etc. at no additional cost to Company up to a maximum of 20 loads. Company shall pay Contractor on moving any loads beyond 20 loads as per actual cost incurred plus 10% handling charges.

**Note:-** Only one rig move cost will be applicable from the above options given at Sr. No. (i) to (iii) as per discretion of the Company. In case of opting for Sr. No (i), Contractor to submit three financial quotations to Company for selection of lowest quote.

**e) Repair Rate**

In case of suspension of normal operations to be performed by Contractor due to equipment breakdown, necessary replacement, repair or maintenance etc. of the drilling rig and all other items for which Contractor is responsible, Rates as mentioned hereunder will apply, however, normal operation will not be suspended due to routine maintenance such as changing pump liners.

For periods when normal operations cannot be carried out due to damage, loss, failure, maintenance, repairs of CONTRACTOR's equipment from or for any cause, operating rate will apply up to a maximum of 10 hours per month. Thereafter Contractor will be paid the repair rates of US\$\_\_\_\_( )/ 24 hours day for period not exceeding 5 hours within the same month. No rate will apply thereafter.

If Contractor is off rate during the last day of such a calendar month for reasons as described in this Clause, payment of rates will not be resumed until such time as normal operations are again in progress.

During periods of a no-rate payment mentioned above Company may, at its option, elect to discontinue the provision of certain services and supplies normally furnished by COMPANY to contractor under this Contract.

If COMPANY can reasonably show any document that operations are being slowed down or carried out less efficiently due to equipment inspection, replacement, repairs or maintenance operations, Company shall be entitled to a reduction in the Rates to a direct relation to the percentage that the operations are being slowed down or carried out less efficiently.

**f) Remedial Rate**

For any period that normal operations are being conducted in order to correct or overcome the effects of negligence on the part of Contractor, COMPANY will pay to contractor the remedial rate with top drive will be US\$\_\_\_\_( ) per 24 hours day and without top drive will be US\$ \_\_\_\_\_( ) per

24 hours day only for limited period as per consent of Company on **the basis of the technical evaluation of the event remedial rate shall be applied accordingly as decided by the Remedial Committee.**

**g) Fuel: High Speed Diesel (HSD)**

Maximum fuel consumption of the rig and camp generator is \_\_\_\_\_ ( ) liters per day.

Bidders are requested to quote optimum fuel (HSD) consumption of the rig and camp generator per day in liters. OGDCL will use this rate of diesel on the date of technical bid opening for financial evaluation purpose.

OGDCL will provide HSD to the contractor throughout the operations. In case the cumulative consumption over the duration of the well exceeds the product of quoted daily consumption & the duration of the well, then excess quantity of HSD used by the rig and camp generators shall be deducted from contractor's last two months' invoices. Therefore, OGDCL will hold last two (or more as deemed required) months operational invoice of contractor till the settlement of diesel consumption at that well.

**h) Catering Rates**

The catering rates shall be applied above 20 designate personnel as under:

- Meal cost for Company's designated personnel US \$/Person/Meal for Senior & Junior Mess separately. Junior mess rates should significantly lower than Senior.
- Full board including three meals per day for Company's designated personnel US \$/Person/day.

**i) Stacked Rates**

Stacked Rate with crew or without crew will be zero.

**j) Demobilization**

Demobilization Fee in lump sum shall be as per RFQ.

**k) Charges for Catering & Lodging of Company Personnel**

(In excess of 20 Company or Company third party Personnel)

Note: Full Board Day Rate shall apply for any person staying overnight.

	<b>Senior Personnel [USD/ Day]</b>	<b>Junior Personnel [USD/ Day]</b>
Full Board:		
Breakfast:		
Lunch:		
Dinner:		
<b>TOTAL</b>		

\* - Mid Night meals will be provided at no additional cost to the company.

**l) Crew Bus**

In order to move crew from camp site to rig site and vice versa (max. distance 15km, where necessary) a twenty-two (22) seat bus plus two drivers will be provided by Contractor at no additional cost to Company.

**Note : Also if unit rate / price is found missing against any of the item then cost of same shall be considered to be included in the total bid value.**

**CONDITIONS TO THE CONTRACT**

1. Clause – Definitions, Object, Commencement Duration, Termination

1.1 Clause – Definitions

1.1.1 “Contract” means the terms and conditions contained in the main Contract entitled hiring of drilling Rig services on well to well basis as per, annexure-A (A1 to A7).

- Drilling Rig Description.
- List of Contractor’s Personnel.
- Checklist of Contractor’s and COMPANY’S Obligations.
- Rates and Fees.

1.1.2 “Contractor Area” means the areas covering the locations indicated in writing by the COMPANY for the discharge of the CONTRACTOR’S work obligations under this Contract.

1.1.3 “Drilling Rig” means the Drilling Rig to be utilized by CONTRACTOR in the performance of its obligations under this Contract and as listed.

1.1.4 “COMPANY’S Equipment” means the equipment, material, supplies, services and other items specified to be provided by COMPANY.

1.1.5 CONTRACTOR’S Equipment” means the Drilling Rig and associated equipment specified to be provided by CONTRACTOR in Annexures and materials supplies, services and other items specified to be provided by and at the expense of CONTRACTOR .

1.1.6 Client Group: Means, individually and collectively, Client or any subsidiary of Client, Client’s co-venture partners, Client’s contractors and subcontractors of any tier (other than Contractor) and their respective directors, officers, members, employees, contractors, agents and invitees

1.1.7 Contractor Group: Means, individually and collectively, Contractor and any holding company or subsidiary of Contractor or any subsidiary of such holding company and its contractors and subcontractors of any tier and their respective directors, officers, members, employees, contractors, agents and invitees

1.2 Clause – Object

CONTRACTOR shall with the Drilling Rig, the drilling and other equipment and the personnel as detailed in this Contract drill/work over wells on location as designated by COMPANY in the area specified by COMPANY in accordance with the stipulations of this Contract.

1.3 Clause – Details of the Service/Contract Price

The Drilling Rig and Services in accordance with the rates set out which forms an integral part of this Contract. All prices charges under this Contract shall not vary from the attached prices shall be firm during the period of this Contract

1.4 Clause – Commencement Date

The “Commencement Date”, as used in this Contract, shall be the date when both of the following conditions are fulfilled:

- a) The Drilling Rig has arrived on location, and is properly ready to spud in the first well and rectifying the deficiencies highlighted in the report to the satisfaction of COMPANY.
- b) The Drilling Rig and CONTRACTOR’S personnel are declared by COMPANY in conformity with all the provisions of this Contract, after an inspection has been carried out as provided for in Clause 5.1 (b).

However, in the case of any delay in declarations by COMPANY after reasonable notice from Contractor, the commencement date shall be the date after rectification of deficiencies to the satisfaction of COMPANY. In case of any delay to the date within the reasonable control of Contractor, as sole remedy of Company in respect of such delay, Company shall have the right to claim liquidated damages in according with Section 12.1 of the Contract.

CONTRACTOR will ensure that the Drilling Rig will be available and ready to spud the well and start operations at first well on agreed date as per tender requirement.

1.5 Clause – Duration and Termination The duration of this Contract will be for a Primary Term of one year commencing from spud date of first well extendable with mutual consent on same rates, terms and conditions, under Rate Running Contract executed strictly under T.E.No\_\_\_\_\_, Annexure-A, at Sr. No.1 “Scope of Work” provided that:-

- 1) Notwithstanding anything to the contrary contained herein, in the event that the Drilling Rig becomes a total loss (which term will include a constructive, arranged and/or compromised total loss), the Contract will be considered as terminated, without notice, as from the moment the incident directly leading to that loss occurred and no payment whatsoever shall become due by the COMPANY to CONTRACTOR as from that moment.

**OR**

- 2) COMPANY shall, upon written notice, have the right to terminate the Contract in the event that COMPANY becomes dissatisfied with the performance or progress under this Contract as a result of causes reasonably within the control of CONTRACTOR and COMPANY has specified by written notice the cause of its dissatisfaction and CONTRACTOR has not remedied the matter complained of or has not taken steps and diligently proceeded to remedy such matter within Seven (07) days after such written notice is received by CONTRACTOR. Further remuneration shall cease to be due as from the expiry of said Seven (07) days and the amount of Performance Bond/Bank Guarantee shall be forfeited upon such termination.

**OR**

- 3) Subject to written consent of the Contractor COMPANY shall have the right to extend the duration of this Contract beyond the Primary term, provided written notice has been given by COMPANY to CONTRACTOR thirty (30) days prior to the end of last well. During such additional period, COMPANY shall be entitled to terminate the Contract, at any time by giving a prior written notice to CONTRACTOR. Such notice shall be not less than thirty (30) days. Remuneration will cease at the effective date of such termination, as indicated in Sub Clause 1.5.5 hereafter.

**OR**

- 4) The CONTRACTOR shall have completed the program in progress to the satisfaction of COMPANY, at the end of the Primary Term of this Contract or any extension thereof.

**OR**



- 5) At the end of the Contract period or any extension thereof, the Contract will terminate the moment the Drilling Rig, has completed operations on the last well /wellhead and ready to be rigged down. Any delay in dismantling the rig will be remunerated at Zero Rate to CONTRACTOR.

OR

- 6) COMPANY reserves the right to terminate the Contract in such events as provided for under Clauses 5.1, 5.2, and 5.3.

In the case of termination under this Clause 1.5 no further payment other than payment for work performed up to the date of termination will be due to CONTRACTOR unless specifically stated otherwise.

## **2 Clause – Equipment, Personnel And Services**

- 2.1 Clause - Equipment, Personnel, etc., to be provided and operations to be carried out by CONTRACTOR.

CONTRACTOR shall provide the Drilling Rig, the equipment, spare parts, supplies, services and personnel and carry out all operations shown as to be provided in this Contract. Replenishment of CONTRACTOR items will be arranged by the CONTRACTOR at its expense and CONTRACTOR will be responsible for maintaining adequate stock levels.

CONTRACTOR shall also provide at its expense any items of equipment, spare parts, supplies, services, training or personnel which are not mentioned in Annexures 1 and 3, but which are required for normal drilling operations, according to good oilfield practices and safe operating practices.

CONTRACTOR shall have no authority hereunder to hire or engage a third party on behalf of COMPANY nor to incur any debt, liability or obligation for or on behalf of COMPANY, without prior written permission from COMPANY. Use of Subcontractors by CONTRACTOR shall not relieve CONTRACTOR from any liability or obligation under this Contract. Any representation or warranty in respect of CONTRACTOR's work to be performed, its Drilling Rig, equipment and personnel will likewise apply to any work to be performed and property and personnel to be supplied by Subcontractors as if such work were performed and property and personnel were supplied by the CONTRACTOR.

- 2.2 Clause – Equipment, Personnel, etc. to be provided and operations to be carried out by COMPANY

COMPANY shall timely provide the equipment, spare parts, supplies, services and personnel and carry out all operations shown to be provided by it in Annexures (A1 to A3) subject to the stipulations of this Contract. Replenishment

of COMPANY items will be COMPANY'S responsibility.

2.3 Clause – Additional Equipment, etc.

Should COMPANY request CONTRACTOR to provide special and/or additional tools, equipment, materials and services other than those designated in the Contract, their cost and the manner in which they are to be furnished shall be agreed upon beforehand in writing.

2.4 Clause – Additional Personnel

Should reduction (or increase) of CONTRACTOR's additional personnel, be requested by COMPANY, COMPANY shall be entitled to deduct from (or to add to) the rates the applicable personnel unit rate as mutually agreed. COMPANY shall pay the applicable individual demobilization / remobilization fees as mutually agreed. COMPANY shall give CONTRACTOR not less than five (5) calendar days prior written notice to release or remobilize CONTRACTOR's personnel.

### **3 CLAUSE – RATES, FEES AND OTHER CHARGES**

3.1 Clause – Payments by COMPANY

The COMPANY shall pay to CONTRACTOR during the continuance of the Contract and according to its terms the amounts due, on monthly basis, calculated as provided in this Contract. No payments shall be due by COMPANY other than those specifically mentioned in this Contract.

3.2 Clause – Daily Rates and Fees

In full consideration of CONTRACTOR's entire performance of the work, COMPANY agrees to remunerate CONTRACTOR in the manner set forth in this Clause 3.2.

All daily rates given below shall be calculated on the basis of time to the nearest quarter of an hour:-

a) Operating rate

Operating Rate is payable from the Commencement Date onwards, unless superseded by one of the other rates (including no rate whatsoever) contained in this Contract, and will continue during the term of this Contract.

b) Testing/Logging & miscellaneous rate is payable during:

1. Electrical logging operations, Production testing without Contractor's drill string.
2. Rig up / down of BOPs and drilling riser, equipment, wellhead

flanging and wireline operations.

3. When waiting for COMPANY orders or for COMPANY furnished items or services, such as waiting on cement unless during such waiting periods CONTRACTOR's drill string is being employed in the hole either for round tripping, circulating or rotating operations.
  4. Any period while operations are suspended due to adverse weather or other such reasons
- c) Mobilization shall be as specified at Annexure A-5 & A5-1. This fee shall cover all expenses incurred by CONTRACTOR before and until the Commencement Date without any exception, including insurance, transportation expenses, fuel and lubricant, rental of the Drilling Rig and CONTRACTOR's personnel, time taken by COMPANY to inspect the Drilling Rig and time taken by CONTRACTOR to make any modifications to suit Contractual requirements.
  - d) **Demobilization** fee shall be as specified at Annexure A-5 , Drilling Rig Unit shall be put at CONTRACTOR's disposal upon termination of the Contract under Clause 1.5 and no remuneration whatsoever shall be due to CONTRACTOR for expenses incurred by CONTRACTOR after that date. Demobilization fee shall be as specified.
  - e) **Location Move Rate within field/country** A lump sum location move rate or location move rate basis plus rig move transportation cost at actual will be paid to cover the rig down, rig move and rig up cost until the well is ready to spud as per program of COMPANY within the field/country from the previous well of COMPANY. This rate will cover all types of expenses incurred by the Contractor including rig transportation, fuel, rental of drilling rig and Contractor's personnel cost etc. In case of paying Rig move cost on daily basis plus transportation at cost the CONTRACTOR will obtain three different transportation quotations and COMPANY will select the lowest of those three quotations.

### 3.3 Clause – Rates during repairs/inspection/modifications/maintenance

In case of suspension of normal operations to be performed by CONTRACTOR due to inspection, modifications, necessary replacement, repairs or maintenance, except for routine maintenance etc. of the Drilling Rig and all other items for which CONTRACTOR'S is responsible, the rates as mentioned hereunder will apply.

For periods when normal operations cannot be carried out due to damage to, loss, failure, maintenance, repairs, modifications and inspection of CONTRACTOR's Equipment from or for any cause.

If operations cannot be carried out, due to matters within

CONTRACTOR's responsibility, after a cumulative period of ten (10) hours for one or several occurrences during a calendar month, CONTRACTOR will not be entitled to any compensation during any further suspension of normal operations occurring during the remainder of that calendar month. If CONTRACTOR is off rate as described in this Clause, payment of rates will not be resumed until such time normal operations are again in progress.

During periods of a Zero Rate payment mentioned above, COMPANY may, at its option, elect to discontinue the provision of certain services and supplies normally furnished by COMPANY to CONTRACTOR under the Contract.

In the event the Drilling Rig, upon the agreement of the parties, is shut down for inspection, repair, maintenance, structural modifications or repairs of structural defects under this Clause 3.3

If COMPANY can reasonably show and document that operations are being slowed down or carried out less efficiently due to equipment inspection, replacement, repairs or maintenance operations, COMPANY shall be entitled to reduction in the Rates under Clause 3.2 in a direct relation to the percentage that the operations are being slowed down or carried out less efficiently

Operational KPIs to be mutually agreed after signing of Contract with no additional cost to OGDCL.

Operational KPIs will be set based on following table 3.3(a).

<b>Connection Time and BHA Tripping Speed</b>	<b>OGDCL</b>	<b>Industry Standard</b>
DP RIH Cased hole (std/hr)	16	17
DP POOH Cased hole (std/hr)	16	17
RIH with P/U DP singles from piperack (jt/hr)	16	17
POOH L/D DP singles (jt/hr)	16	17
P/U and Rack back DP stands (Stnds / hr)	6	6
<b>BOP N/U , PT, N/D (hrs)</b>		
N/U 20 3/4" 3M BOP (First Time)	12	9
PT 20-3/4" 3M BOP (First Time)	8	7
N/D (Move aside) 20 3/4" 3M BOP (First Time)	4	2
N/U 20 3/4" 3M BOP (Subsequent Time)	4	3
PT 20-3/4" 3M BOP (Subsequent Time)	8	7
N/D 20 3/4" 3M BOP (Final)	7	5
N/U 13 5/8" 10M BOP (First)	14	9
P/T 13 5/8" 10M BOP (First)	7	6
N/D 13 5/8" 10M BOP (First)	7	4
N/U 13 5/8" 10M BOP (Subsequent)	6	4
P/T 13 5/8" 10M BOP (Subsequent)	8	7
N/D 13 5/8" 10M BOP (Final)	10	6
<b>Well Head Installation (hrs)</b>		
Cut & Dress casing CSG + Install: (All operations from the time after plug is bumped to start BOP N/U)		
24" X 26 3/4" 3M	12	8
18 5/8" X 20 3/4" 3M or 21 1/4" 2k	10	7
Cut 9 5/8" Casing + Installation ( All operations up to to BOP N/U)		
Install 13 5/8" 10M X 11" 10M THS	10	6
<b>Casing Running Speed (Excludes Make up of Shoe Track)</b>		
30" Casing (jts/hr)	2	2
24" Casing (jts/hr)	2	3
18 5/8" Casing (jts/hr)	5	7
13 3/8" Casing (jts/hr)	7	9
9 5/8" Casing (jts/hr)	9	12
7" Liner Joint (jts/hr)	12	14
7" Liner RIH with DP (std/hr)	10 to 12	10 to 12
4 1/2" Liner (jts/hr)	12	12
4 1/2" Liner RIH with DP (std/hr)	10 to 12	10 to 12
<b>Completion RIH</b>		
RIH completion (jt/hr) in cased hole	10.00	12
<b>Rig Move</b>		
Rig Move (days)		TBD
<b>BHA MU hours - Excludes MWD, Motor, Cleaning, Fishing and other speciality tools.</b>		
28"	8	6
22"	8	7
16"	8	7
12"	7	5
8 3/8"	7	5
5 7/8"	6	4
<b>BHA LD hours – Excludes MWD, Motor, Cleaning, Fishing and other speciality tools.</b>		
28"	8	6
22"	8	7
16"	8	7
12"	7	5
8 3/8"	7	5
5 7/8"	6	4
<b>Notes:</b>		
Pressure Testing KPI is based on consideration that BOPs have been pressure tested on the BOP stump.		
Rigs that don't have those stumps at OGDCL or Contractor Rigs		
Any delays caused due to third party service companies interface will not be included in the KPIs. KPIs will be applicable only when OGDCL or Contractor Rig has complete responsibility of the activity		

### 3.4 Clause – Rate in event of negligence by CONTRACTOR

For any period that normal operations are being conducted in order to correct or overcome the effects of established negligence on the part of CONTRACTOR, COMPANY will pay to CONTRACTOR the Remedial Rate **on the basis of the technical evaluation of the event as decided by the Remedial Committee as per rate mentioned at Annexure A-5-1(F)**

### 3.5 Clause – Revision of Rates

3.5.1 Subject to the provisions of Section 4.2 of Contract that all rates and fees shall be fixed and firm as indicated in Annexure 5 for the duration of the Contract's Primary Term and any extension thereof and shall be deemed to be fully inclusive of all CONTRACTOR's costs, it being understood that CONTRACTOR has obtained all information and taken account of all circumstances which may affect any of its costs and expenses before agreeing to the rates and fees herein provided for.

3.5.2 Notwithstanding the above during the Contractor's Primary Term or any extension thereof after the date of signature of Contract either party may request downward adjustment in the daily rates payable under this Contract:

- In the event of any change during the term of the Contract in taxation or other legislation in Pakistan having a major effect on CONTRACTOR's financial position unless such a change could have been foreseen by CONTRACTOR at the time of entering into the Contract.
- In the event of an assignment as referred to in Clause 9, of draft contract suitable adjustments shall be made to give effect to any increase or decrease in CONTRACTOR's operating costs, the burden of taxes in the new operating area and transfer of base.

## 4. Clause – Invoices and Payment

### 4.1 Clause–Submitting of Invoices

Contractor shall invoice COMPANY on or before the tenth day of each calendar month the amounts due from COMPANY pursuant to Clause 3, in the preceding calendar month. All invoices shall be accompanied by time sheets approved by COMPANY'S designated or concerned personnel with regard to the applied rates and by documentary evidence of any costs incurred and to be charged to COMPANY. CONTRACTOR will use its best endeavors to submit invoices as they become due. Invoices shall be rendered in US Dollars.

## 5. Clause – Standard of Performance

### 5.1 Clause–Performance and Inspection of CONTRACTOR’s Drilling Rig.

- a) CONTRACTOR undertakes that Drilling Rig with its equipment and personnel is and will continue to be capable of being moved for all moves required under this Contract and of operating in the area of operations under this Contract, all in accordance with Annexure A and best oilfield practices.
- b) COMPANY shall have the right before the Commencement Date, but without relieving CONTRACTOR of its own obligations in this respect, to inspect and reject for sound reasons the Drilling Rig or any part thereof.
- c) CONTRACTOR will have available for examination records of CONTRACTOR’s Equipment reflecting its condition. The Parties will agree to a procedure for the modification or repair of the rejected part at CONTRACTOR’s expense; failing such Agreement COMPANY may at its option, be relieved from its obligations under this Contract.
- d) Notwithstanding the above, COMPANY reserves the right at any time during the term of the Contract to terminate the Contract when Drilling Rig does not meet the requirements for which it has been designated due to basic deficiency in construction and/or design and CONTRACTOR is unable to prove that such deficiency can be corrected within thirty days. No daily rate or other payment will be due by COMPANY to CONTRACTOR during repairs carried out to correct such deficiencies.
- e) Drilling String Standards for the purposes of this Contract, CONTRACTOR shall provide premium class drill pipes whose specifications shall be approved by COMPANY.

CONTRACTOR agrees that all pipes, drill collars, substitutes and other down hole equipment regularly in use shall be inspected before commencement date by a recognized inspection service company at CONTRACTOR’s expense.

COMPANY shall be furnished with copies of all the reports of such inspection. Any drill pipe not passing API Premium Class (two white bands; refer API Standard RP7G, latest edition) shall be rejected and replaced by new plastic-lined drill pipe.

Drill collars, subs with threaded ends shall have BSR (Bending Strength Ratio), within the acceptable range as specified in API RP 7G paragraph 3.3 and 3.4.

Any drill collar with connections showing defects shall be replaced by new collars or alternatively shall be re-cut in accordance with drill collar specifications.

Heavy weight drill pipe (HWDP) threaded ends should be inspected and Classified according to the same specifications as those for drill pipe.

All joints shall be and remain identified individually by means of hard-stamping.

Fishing tools shall be inspected by magnetic particle inspection technique before acceptance by COMPANY.

CONTRACTOR shall deliver to COMPANY before the Commencement Date the inspection reports (including full length sonoscope, end area inspection, tool joints OD measurements for used drill pipes and heavy weight, magnetic particle inspection and OD's measurement results for subs, crossover and drill collars) together with individual numbers, substantiating such classification.

- f) If at any time an item which the CONTRACTOR is required to provide as per Clause 2.1 cannot immediately be produced by the CONTRACTOR and the CONTRACTOR cannot produce evidence that such item was lost or damaged during the course of operation, then the CONTRACTOR will, at COMPANY'S discretion, credit the COMPANY the rental rate for such item as per price list of a recognized rental-agency, from the date such item was required until arrival of such item onboard the Drilling Rig.

## 5.2 Clause – Performance of CONTRACTOR and its Personnel

- a) CONTRACTOR will carry out operations hereunder with due diligence and in a safe and workman-like manner according to best oil field practices. CONTRACTOR shall ensure that the Drilling Rig is adequately manned with competent and well – qualified experienced personnel as listed in related Annexures and that the Drilling Rig is maintained in a state in which it can perform efficiently, safely and continuously.
- b) CONTRACTOR shall prior to start of operations submit to COMPANY for approval a name list of all supervisory personnel (assistant driller and above) planned to be working on this operation.

This list shall show each person's qualifications, previous employment with dates, training courses attended and copies of all pertinent certification obtained.

If, in the course of the operation, CONTRACTOR plans to change one of the supervisory personnel from the original name list, then the CONTRACTOR shall contact COMPANY in advance, inform him of the intended change and give COMPANY the above-mentioned particulars of the new person.

Pursuant to Clause 5.4 COMPANY reserves the right to reject a person on the original name list and also any subsequent change to the name list.

- c) CONTRACTOR shall organize reliefs of its personnel in accordance with COMPANY'S operation instructions and the shift schedule given in Annexure A3.



CONTRACTOR shall compose shift so that no language problems arise between and among CONTRACTOR's personnel and COMPANY'S personnel.

- d) CONTRACTOR shall nominate a representative for health, safety and environment matters.

5.3 Clause – Right to shut down operations / terminate Contract

5.3.1 Without prejudice to the provisions of this Contract, if COMPANY is dissatisfied with the performance of CONTRACTOR, on account of incompetence of CONTRACTOR, slow progress in the performance of operations hereunder or of gross negligence of safety precautions, as a result of causes reasonably within CONTRACTOR'S control or on account of negligent performance on the part of CONTRACTOR, COMPANY shall give CONTRACTOR written notice in which COMPANY shall specify in detail the cause of its dissatisfaction. Should CONTRACTOR fail or refuse to remedy the matter complained of within Ten (10) days after the said written notice has been received by CONTRACTOR, COMPANY shall have the right either:

- a) To direct CONTRACTOR to cease operations and pay CONTRACTOR no rate what so ever until ready to resume operations to the satisfaction of COMPANY, or to terminate the Contract immediately without any further compensation.
- b) In case where CONTRACTOR's negligence of safety standards leads to imminent hazards, COMPANY reserves the right to direct CONTRACTOR to cease the operations immediately and no further rate what so ever will be paid, until the situation is remedied.
- c) To take over the Rig, CONTRACTOR's equipment and personnel and to carry out the operations under this Contract. In so doing, COMPANY shall bear full responsibility/liability for operations. While operating the Rig, COMPANY will not do anything, which in CONTRACTOR's reasonable opinion might endanger or harm the Rig, equipment and/or CONTRACTOR's personnel. After taking over the rig, any damage/loss or injuries to the rig, equipment and Contractor's personnel due to COMPANY, to the extent not covered by the insurance under this Contract, shall be on the account of COMPANY, and reimbursed by COMPANY. Liability of the COMPANY hereunder shall extend to third party damage/loss or injuries.

5.3.2 COMPANY is entitled to terminate this Contract by giving written notice, without prejudice to any other rights COMPANY may have, under any of the following circumstances:

- a) If the cumulative total of the periods of Zero Rate as per clause 3.3 exceeds one week in any calendar month or for any occurrence. In this case no indemnity shall be due to CONTRACTOR after this one-week limit.
- b) If CONTRACTOR fails to take out the insurances prescribed in section 23 or such insurance(s) become invalid otherwise than through an act or omission of COMPANY. No payment whatsoever shall be due in the former case and in the latter all remuneration shall cease to be due on the date the insurance(s) become invalid.
- c) If CONTRACTOR goes into liquidation or receivership or enters any agreement with or for the benefit of its creditors or becomes unable or refuses or neglects to carry out the work herein Contracted for or any part thereof or proceed with the same or if any part of the Drilling Rig is taken in execution of liquidation.

All remuneration shall cease to be due as from the date of receipt of COMPANY'S notice of termination under this paragraph.

#### 5.4 Clause – Replacement of Personnel

If in COMPANY'S opinion, any member of CONTRACTOR'S personnel is incompetent, negligent, or working and/or behaving in such a way as to make his continued presence on the Drilling Rig and/or in COMPANY'S base undesirable, COMPANY shall notify CONTRACTOR in writing to that effect and CONTRACTOR shall at once remove him and shall at its expense replace the particular member of its personnel in the shortest possible time, with the one to be approved by the COMPANY.

## 6. Clause–Liabilities for Equipment, Personnel and Operations

### 6.1 Clause– COMPANY'S Materials

6.1.1 CONTRACTOR shall visually inspect all equipment and materials furnished by COMPANY before using same and shall notify COMPANY forthwith of any apparent defect therein in order to permit replacement or repair of the defective item at once. CONTRACTOR shall exercise the correct care, maintenance and manipulation of COMPANY furnished equipment and will carry out maintenance and repair of this equipment on the Drilling Rig. Provided, however, that COMPANY shall, at its cost, provide all spare parts and materials required to maintain or repair COMPANY'S items.

6.1.2 If COMPANY'S well consumables such as wellheads, tubulars etc. are damaged as a result of CONTRACTOR'S negligence or willful wrong doing prior to installation in the well, CONTRACTOR shall, at COMPANY'S option, reimburse to COMPANY the cost thereof or the cost of necessary repairs.

6.1.3. Upon termination of this Contract, CONTRACTOR shall return to COMPANY all COMPANY'S items which are at that time in CONTRACTOR'S custody.

## 6.2 Clause – CONTRACTOR'S subsurface Equipment

6.2.1 Damaged beyond repair or loss of CONTRACTOR'S subsurface equipment, while operating with such equipment below the rotary table, excluding, however, damage or losses due to normal wear and tear or CONTRACTOR'S negligence, will be reimbursed by COMPANY at the depreciated replacement cost based on a four- year life period for such subsurface equipment, provided that the CONTRACTOR will not be paid less than 50% of original purchase value of equipment lost. The contractor will provide with bid the reasonable low rates for BHA components on sliding scale or the contractor will provide 03 quotes for LIH/DBR items comparable with OGDCL lowest purchases from last 03 years.

6.2.2 CONTRACTOR'S negligence referred to in Clause 6.2.1 above shall include, but not be limited to, CONTRACTOR'S not having replaced worn-out material and equipment in time and at its own cost.

6.2.3 Normal wear and tear on the above mentioned equipment including defects revealed by routine pipe inspection will not be classified as damage.

## 6.3 Clause – The Well and the Reservoir

### 6.3.1 The Well

CONTRACTOR shall not be responsible for damage to or loss of the hole or casing therein and COMPANY shall hold CONTRACTOR harmless for any such loss or damage except when the particular loss or damage is caused by CONTRACTOR'S gross negligence.

In such a case CONTRACTOR'S liability shall be limited to re- drilling a new hole equivalent to the depth of the hole so damaged or lost and CONTRACTOR shall be paid in accordance with Clause 3 for such re- drilling operation.

### 6.3.2 Underground damage

COMPANY hereby accepts any and all responsibility for any to underground damage howsoever caused and COMPANY agrees

to indemnify and hold CONTRACTOR harmless from any liability resulting from such damage.

### 6.3.3. Wild well

COMPANY shall be responsible for any and all costs incurred in regaining control of a wild well except where such costs are incurred due to the negligence of the CONTRACTOR.

## 6.4 Clause – Pollution

CONTRACTOR shall take all necessary steps to prevent pollution of area surrounding the wells. In the event of negligence on the part of CONTRACTOR resulting in a blowout or uncontrolled flow from the well, CONTRACTOR will be liable for any claims resulting from such pollution up to the amount of US\$ 250,000.00 per occurrence. Moreover, CONTRACTOR shall always remove at its own cost the rig or part thereof, in the event that the rig is lost or damaged beyond repair, from location, if so required by governmental authority Without prejudice to the foregoing, CONTRACTOR shall not be liable for pollution resulting from a blow out or uncontrolled flow from the well, where such blow out or uncontrolled flow is not attributable to its negligence and COMPANY shall hold CONTRACTOR harmless from any claims resulting from such pollution.

## 7. Clause – Working Conditions

### 7.1 Clause – Instructions by COMPANY

CONTRACTOR shall, without prejudice to the provisions of Clause 8 of the contract, comply with all instructions of the COMPANY consistent with the provisions of this Contract, which may, from time to time be given by COMPANY. Such instructions will be confirmed in writing by COMPANY and may include instructions as to drilling methods or stoppage of operations in progress etc.

### 7.2 Clause – Scope of operations

CONTRACTOR, with the Drilling Rig, drilling equipment and personnel, shall carry out all operations required to drill, test and complete well(s) at locations indicated by COMPANY. Without limitation upon the generality of the foregoing, CONTRACTOR shall be responsible for the move of its Drilling Rig to the first location, rigging up/down, the complete operation of the Drilling Rig and for the overall direction of the transport operations between locations and from the last location.

### 7.3 Clause – Independent Contractor

In the performance of its operations hereunder, CONTRACTOR shall be an independent CONTRACTOR with the authority to control and direct the performance of the detail of its work, subject to COMPANY'S right to give instruction and of inspection and supervision as laid down in this

Contract. The personnel / employees of the CONTRACTOR shall in no way and at no times be deemed to be employees by the COMPANY. The presence of and the inspection and supervision by COMPANY'S representative at the site of the work shall not relieve CONTRACTOR from CONTRACTOR's obligations and responsibilities hereunder.

CONTRACTOR shall therefore assume all costs and expenses appropriate to its independent status and, in particular with regard to items pertaining to its personnel, all such items including but not limited to salaries, bonuses, insurance and social welfare contributions of all descriptions and any other requirements of any laws for the time being in force.

### 7.4 Clause – Adverse Weather

In the event of impending adverse weather or other conditions, CONTRACTOR shall, in consultation with COMPANY, decide whether to institute precautionary measures in order to safeguard the well equipment and the Drilling Rig to the fullest possible extent.

### 7.5 Clause – Public Holidays

Work shall be performed on a 24 hours per day, 7 days per week, 365/366 days year basis.

### 7.6 Clause – Maximum Capacity

COMPANY reserves the right to require CONTRACTOR to utilize any of CONTRACTOR's Equipment to its maximum capacity as rated by the manufacturer. Inability of equipment to perform at its rated capacity thus impairing the efficiency of operations shall entitle COMPANY to continue operations under Reduced Rate defined in the related clause.

### 7.7 Clause – Well Programme

For each well, COMPANY shall provide CONTRACTOR with a "Well Drilling Programme" which shall include (but not necessarily be limited to) well depth, hole sizes, casing programme (including specified use of protectors and drift mandrels), mud control programme and COMPANY'S deviation policy. COMPANY may modify this programme while operations are in progress. COMPANY, accordingly, shall have the right to complete or abandon the well at any depth.

### 7.8 Clause – Safety and Well Control Policy

COMPANY and CONTRACTOR will ensure that their respective employees will

observe and perform all safety and occupational health regulations which they may respectively issue. Without prejudice to CONTRACTOR's general responsibility for the safety of its operations and the personnel involved and its obligations under this Contract, CONTRACTOR shall observe, perform and follow all statutory safety regulations and such other safety regulations as may be issued by COMPANY from time to time.

CONTRACTOR shall, prior to start of operations, present to COMPANY a report indicating its organization for safety, its knowledge of safe practices including local statutory requirements, its previous safety records in terms of injuries and damages, the safety awareness and training of its personnel, as well as the effectiveness of its accident reporting system.

CONTRACTOR shall nominate a representative for safety, health and environmental matters.

CONTRACTOR shall maintain a safety register in which results of safety tests/checks and exercises are recorded and commented. The information shall be made available to COMPANY.

CONTRACTOR shall maintain well control equipment in sound condition at all times and shall use its best efforts and means to control and prevent fires and blowouts and to protect the hole. The blowout prevention equipment shall be installed, operated and tested according to the best oilfield practices and COMPANY'S Well Control requirements.

#### 7.9 Clause – Depth Measurements

CONTRACTOR shall be able at all times to indicate the exact measured depth to the well. CONTRACTOR shall measure with a steel tape and keep a record of the length of drill string, casing and other tools run in the hole.

A drill pipe tally/Tubing tally book will be kept on the Drilling Rig. It will accurately show the length of every single drill pipe/tubing, the length of every single drill collar/heavy weight, the length of sub/crossover/tool, the length of every stand.

It will also show a drawing of the bottom hole assembly indicating more particularly the different inside and outside diameters, type of threads and such other information as required by COMPANY. All length measurements shall be in meter.

Reference datum for all depth measurements will be the top of the rotary table.

#### 7.10 Clause – Control of Mud Programme

COMPANY may, at its discretion, check and control the CONTRACTOR's implementation of the mud programme.

CONTRACTOR shall take all reasonable care to use and maintain a mud with properties in accordance with any specifications made by COMPANY or acceptable to the latter. Should the mud properties, during drilling, prove

inadequate, CONTRACTOR shall immediately contact the COMPANY'S representative to inform him of the situation. In the event no COMPANY'S representative is available, CONTRACTOR shall have the duty to improve said properties to the best of its knowledge, by consultation with the Mud Contractor and Mud Engineer.

7.11 Clause – Cutting/Core Programme

When requested by COMPANY, Contractor shall collect, save and identify the cuttings and cores according to COMPANY'S instructions and place them in separate containers to be furnished by COMPANY. Such cuttings and cores shall be made available to COMPANY at the location.

7.12 Clause – Oil/Gas Formations

Whenever CONTRACTOR encounters a formation which reasonably appears to be oil or gas-bearing and/or of lithological importance according to the COMPANY'S instructions, it shall stop drilling and immediately notify COMPANY thereof so as to give COMPANY an opportunity to examine the formation for the purpose of determining what further operations should be conducted.

CONTRACTOR shall co-operate with COMPANY'S other Contractors and help to make tests to determine the productivity of formation. CONTRACTOR shall not refuse, without good reasons, its equipment being used for formation testing in accordance with good oil field practice.

7.13 Clause – Records to be furnished by CONTRACTOR

CONTRACTOR shall keep and furnish to COMPANY a daily drilling report on IADC format, a copy of the maintenance Engineer's daily report, a bit record, a weekly BOP check list (all forms in the manner agreed upon with COMPANY), deviation discs or charts, weight indicator, pump pressure indicator charts and all other relevant records and data. Upon the completion or abandonment of each well, all data and copies thereof pertaining to the geology and formations encountered in the well which are in the CONTRACTOR'S possession shall be delivered to the COMPANY.

7.14 Clause – Well Log

CONTRACTOR shall assist COMPANY or its other Contractors in the preparation of an accurate log of the well giving depth and thickness of each formation from the surface of the ground to the bottom of the hole and any other pertinent information concerning the well.

7.15 Clause – Abnormal and Hazardous Formation and / or Conditions

If at any time while operating, CONTRACTOR believes that a continuance of the

operation will result in abnormally hazardous conditions, it shall immediately notify the COMPANY and in the meantime without undue delay exert every reasonable effort to overcome this difficulty; in any such case CONTRACTOR is entitled to stop drilling or other operations on the well under possible unsafe conditions and consult with COMPANY.

7.16 Clause – Fuel, Lubricants, etc.

All fuel, oil, greases and the like consumables, required in the operations hereunder, furnished by COMPANY or by CONTRACTOR, shall be from a source of proven quality / standard.

7.17 Clause – COMPANY’s Representatives

COMPANY shall be entitled to designate a representative or representatives who shall at all times have access to the Drilling Rig the purpose of observing tests, inspecting the work performed by CONTRACTOR or verifying the records of items furnished by CONTRACTOR. Such representative or representatives shall be empowered to act for COMPANY in all matters relating to CONTRACTOR’s performance under this Contract.

7.18 Clause – Confidential Information

All information obtained by CONTRACTOR in the conduct of its operations hereunder, including but not limited to depth, formations penetrated, the results or coring, testing and surveying, shall be confidential and shall not be divulged by CONTRACTOR to any third party either during the term of this Contract or thereafter. CONTRACTOR agrees to use its best efforts to see that its personnel shall maintain secrecy to the same extent.

7.19 Clause – Compliance with Laws etc.

CONTRACTOR shall furnish the Drilling Rig and Equipment and perform its duties under this Contract in strict compliance with the provisions of all legislation, whether national, regional, local or otherwise, as may from time to time be in force in all or any part of the area of operations and CONTRACTOR shall strictly comply with the conditions of any permits, licenses and clearances relating to its operations hereunder and whether held by CONTRACTOR or COMPANY.

CONTRACTOR shall indemnify and hold COMPANY harmless from and against any and all liability, damages, claims, fines, penalties and expenses of whatever nature arising out of or resulting from violation by CONTRACTOR or its personnel of such legislation and conditions of permits, licenses and clearances.

7.20 Clause – Social Laws

The CONTRACTOR shall be liable for payments direct to the appropriate authorities of all contributions and other moneys required or prescribed by social labor laws or any similar legislation in respect of its personnel and shall indemnify the COMPANY for any payments whatsoever that the CONTRACTOR is required



to pay in respect of the CONTRACTOR's personnel under any provision of such legislation.

7.21 Clause – Patent Infringement

CONTRACTOR agrees to indemnify COMPANY and hold it harmless from and against all loss, damage and expense arising from any claim for infringement or alleged infringement of any patent covering the drilling equipment, methods or processes furnished by CONTRACTOR or that CONTRACTOR is licensed to use.

COMPANY agrees to indemnify CONTRACTOR and hold it harmless from and against all loss, damage and expense arising from any claim for infringement or alleged infringement of any patent covering the drilling and completion equipment and methods or processes furnished by COMPANY or that COMPANY is licensed to use.

7.22 Clause – Industrial Relations

The parties acknowledge that it is essential that CONTRACTOR maintains at all times good industrial relations with its personnel and that CONTRACTOR promptly takes such steps as may be necessary to maintain such good relations to the extent that such requirement is consistent with sound business practice. Whenever required CONTRACTOR shall consult with COMPANY on all matters pertaining to industrial relations.

7.23 Clause – Operating and Emergency Procedures

CONTRACTOR shall prior to start of operations submit updated Drilling Rig operating manual, written procedures such as drilling, routine BOP testing, etc. and safety, emergency procedures such as fire, rig evacuation, etc. to show evidence of regular exercises for the emergency procedures. Contractor will also enforce preventive measures related to Covid-19 pandemic at all times.

7.24 Clause – Accident Reporting

The CONTRACTOR shall immediately report to the COMPANY all accidents that result in injury to persons or damage to property. The COMPANY shall also be informed when a person involved in a lost time accident returns to work. The CONTRACTOR shall cooperate to the full in any subsequent investigation of the accident required by the COMPANY.

The CONTRACTOR shall keep its accident records in accordance with guidelines provided by the COMPANY and shall make these records available to the COMPANY. If the COMPANY so requests, the CONTRACTOR shall discuss its accident data with the COMPANY.

7.25 Clause – Environment

CONTRACTOR and COMPANY shall endeavor to pay appropriate regard to the environment by acting to preserve air, water, animal and plant life from the adverse effects of COMPANY'S and CONTRACTOR's operations, and to minimize any nuisance which may arise from such operations.

CONTRACTOR shall adhere to existing national statutory regulations concerning discharge from the Drilling Rig or any other acts, measures or duties stipulated by the competent authorities regarding the conservation of environment.

7.26 Clause – Accommodation and Meals for COMPANY

CONTRACTOR shall provide, at its cost, accommodation and meals of good quality and quantity in accordance with drilling industry practices for a maximum of twenty (20) of the COMPANY'S personnel as directed by COMPANY per day. Any accommodation and meals provided by Contractor for the said personnel in excess of the maximum daily number of twenty (20) shall be paid for by COMPANY.

8. Clause – Communication Skills of Rig Crew

Contractor will provide specified category of rig crew fluent in English language up to the satisfaction of COMPANY.

9. Security

The COMPANY is responsible for security or guard service in the whole CONTRACTOR Area.

**CHECK LIST FOR TENDER ENQUIRY  
HIRING OF DRILLING RIG SERVICES (2500-3000HP)**

<b>2. KEY ACCEPTANCE CRITERIA FOR 2500-3000 HP</b>		<b>Bidder Confirmation / Provision of documents</b>
<b>S.No.</b>	<b>Items</b>	
1.1	Bidder must be an IADC contractor member and maintaining records for last 10 years. Bidder to submit valid IADC certificate along with the bid documents. The bidder should be operating minimum of 5 land drilling rigs (with complete detail).	
1.2	Rig shall have Draw works rated to minimum 2500-3000 hp.	
1.3	Mast, substructure and other load bearing members suffice to bear minimum 580MT static loads.	
1.4	Power system shall have sufficient capacity to simultaneously operate two mud pumps in parallel at rated capacity, Pick up minimum 580MT ST hook load and supply 1300 HP to top drive system and operate all connected AC load with thirty percent (30%) reserve AC power for all string loads with one (1) prime mover out of operation.	
1.5	The rig must have minimum three triplex mud pumps capable to switch over among mud pumps through electrical panel. Rig circulating system must be capable of being used at 7500 psi stand pipe working pressure continuously. Mud tanks and low pressure system should be capable of handling minimum 2.2 SG mud wt.	
1.6	Rig have following equipment from approved API/IADC Manufacturers: <ul style="list-style-type: none"> <li>- Mast</li> <li>- Substructure</li> <li>- Drawworks</li> <li>- Mud Pumps</li> <li>- BOP and Koomey Unit</li> <li>- Crown Block</li> <li>- Travelling Block</li> <li>- Hook / Elevator Links and other related hoisting equipment</li> <li>- Rotary Table</li> <li>- Swivel</li> <li>- Top Drive</li> <li>- Drill string component</li> </ul>	
1.7	In case of award of Contract, Rig to be made available for mobilization & rigged up at OGDCL's location, within timeline provided in ITT.	
1.8	In case of award, contractor must agree to perform drilling operations anywhere in Pakistan including but not limited to Baluchistan and Khyber Pakhtunkhwa	

1.9	Valid Well Control & other certifications of the personnel as stipulated in this ITT	
1.10	Proof of minimum 10 years of operations as an independent Drilling Rig Contractor inside or outside Pakistan (and minimum 5 years outside country of origin of the bidder) with MAJOR E&P COMPANIES like BP, ENI, OMV, SHELL, CHEVRON, MOL, BHP or equivalent. However, bidder must have a total of minimum 10 years' experience. Pakistan origin listed companies can provide 10 years experience inside or outside Pakistan. Email Addresses / Contact Details to be provided for contact person in respective companies (any two) for COMPANY to extract performance related information / certificates, if so asked by OGDCL.	
1.11	Bidder to provide training matrix of the company and confirm the compliance of training matrix.	
1.12	Following systems to be in place and implemented. Bidder to confirm the compliance of following system in one statement (only confirmation required).  <ul style="list-style-type: none"> <li>- Preventive Maintenance System.</li> <li>- Management of Change (MOC) &amp; Exemption System.</li> <li>- Provision of HSE, Driving / journey, substance abuse &amp; IT policy (only policy is required).</li> <li>- Compliance of Rig Move Standard.</li> <li>- Permit to Work System.</li> </ul>	
1.13	Following two conditions regarding Rig inspection are acceptable for OGDCL. <ul style="list-style-type: none"> <li>- OGDCL may ask to the contractor to carry out the detailed rig audit / inspection by an internationally renowned company like Lloyds Group, ModuSpec, ModuResources &amp; Archer prior rig acceptance or while operations as deemed essential.</li> <li>• CAT-IV Rig inspection reports by a reputable company (i.e. Bureau veritas, etc.) to be submitted at the time of bid submission and must remain valid through out tenure of the contract. [09]</li> </ul>	
1.14	Bidder to provide information about company profile as an independent drilling rig services provider, corporate policy & organization chart.	
1.15	Bidder to confirm in single statement that inventory level of all critical spares will be maintained at all times.	
1.16	Bidder to provide surface NPT / performance record of last well along with client details (i.e. name, email, contact number, etc). OGDCL may seek the verification from client. <b>Note:</b> Surface NPT should not exceed more than 2%.	
1.17	Rated hoisting system capacity shall not be less than 580MT.	

### 3. TECHNICALS REQUIREMENT OF DRILLING RIG

S.No.	Items	Bidder Confirmation / Provision of documents
2.1	Have examined the conditions of contract, the scope of work, the commencement of work, etc (i.e. Annexure A-1 to A-7), the receipt of which is hereby acknowledged. We, the undersigned, offer to perform services (Drilling Rig Services) to OGDCL in conformity with all annexure (i.e. Annexure A-1 to A7) or any other in accordance with the said conditions.	
2.2	Bidder to confirm all the offered Drilling Rig equipment conforms to specifications as outlined in Annexure A-1 (i.e. from Section A to Section M). If any deviation or exceptions, please specify separately against equipment description in <b>Annexures A-1</b> from section A to section M. A complete list of such deviations to be attached along with this checklist as per prescribed format.	
2.3	Confirmation that all submitted documents are in accordance with bid requirement / TORs. <b>Any deviation has been notified separately with remarks.</b>	
2.4	Having examined the conditions of contract, the scope of work, the commencement of work, etc (i.e. Annexure A-1 to Annexure A-7), the receipt of which is hereby acknowledged, we the undersigned, offer to perform services (Drilling Rig Services) to OGDCL in conformity with all annexure (i.e. Annexure A-1 to A7) or any other in accordance with the said conditions.	
2.5	Withdrawn all terms and conditions and submitted clean acceptance to all OGDCL TORS	

TECHNICAL REQUIREMENTS OF DRILLING RIG – DEVIATIONS TO TORs (Equipment Specifications)				
Sr. No.	Annexure A-1 Reference	Required Specifications	Offered Specifications	Remarks / Justification
1				
2				
3				

**Note:**

- Bidder shall sign off all the boxes in above checklist as a confirmation / acceptance.
- Bidder has to provide all documents in the bid are in accordance with the requirements stipulated in Tender Documents / TORs and shall be in line as are sequenced in the TORs.
- Company has the right to accept or reject exceptions/deviations to Equipment Specifications as proposed by the bidder. Bidder shall be given adequate opportunity to demonstrate that proposed equipment meets or exceeds the specifications stipulated in the TORs. However, in case of any dispute / difference of opinion, the TORs shall prevail.

Dated this ..... day of .....,

..... (Name) in the capacity of ..... (Designation) duly authorized to sign tenders for and on behalf of .....(Company Name).

Address:

Phone:

Email: