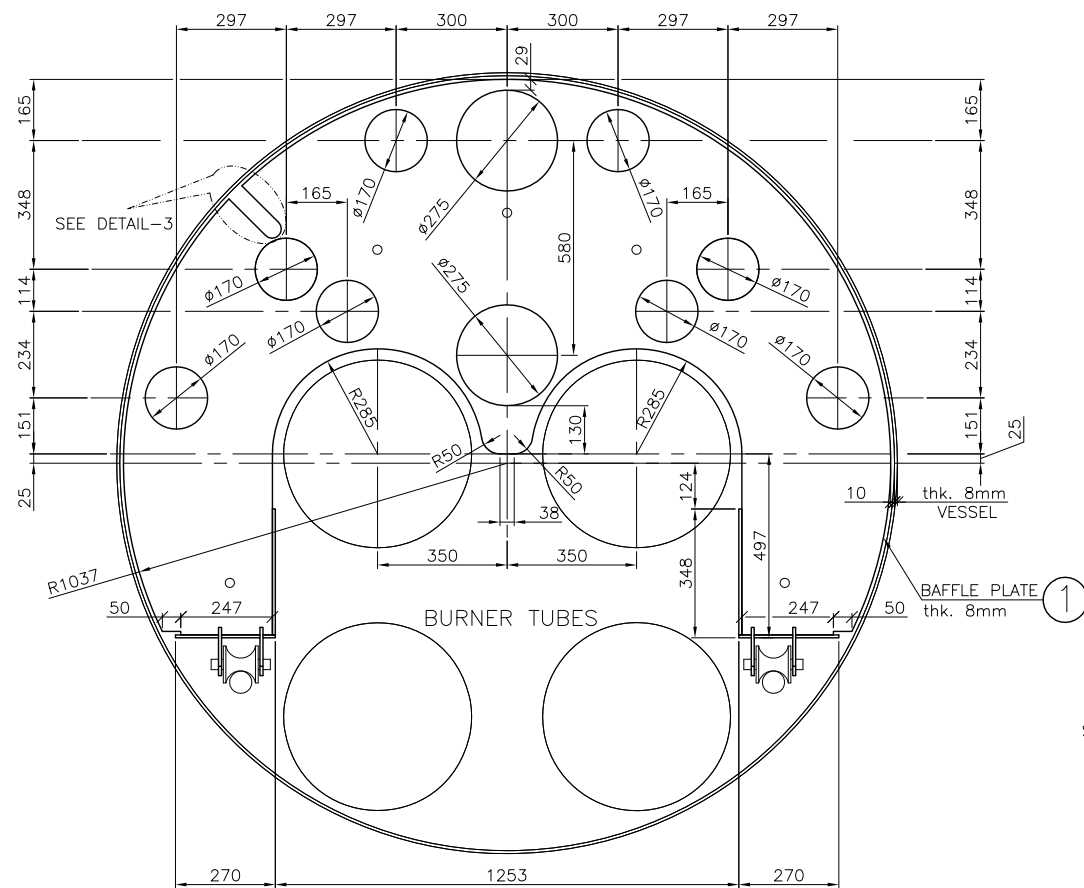
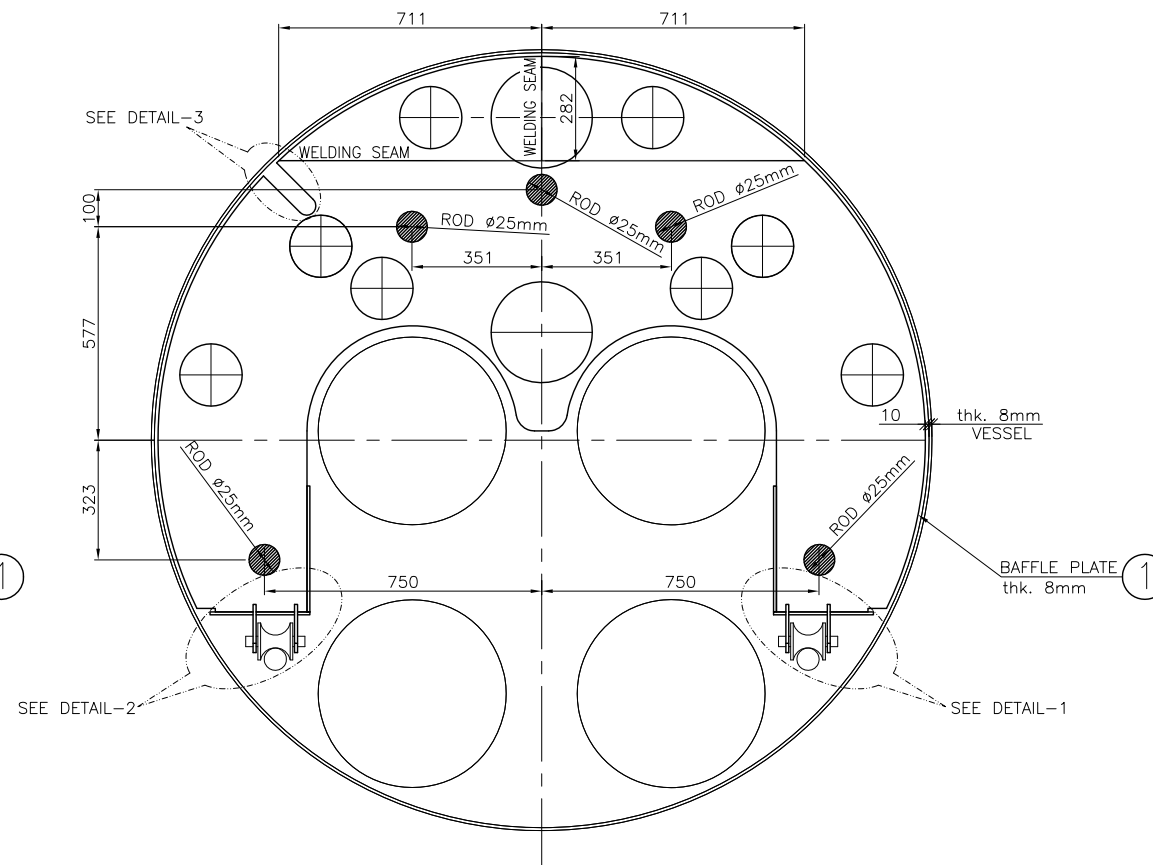


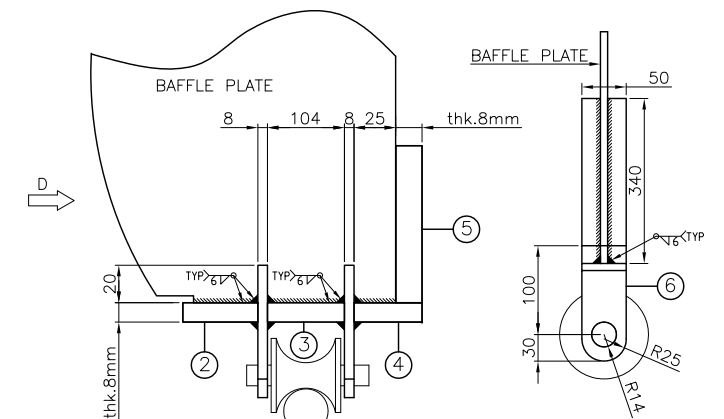
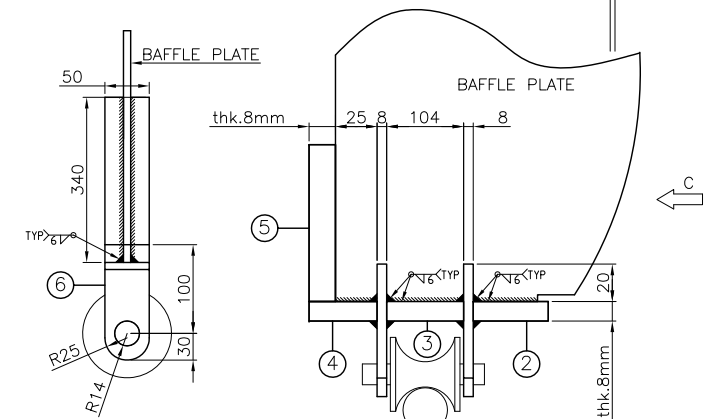
### BUNDLE SUPPORT



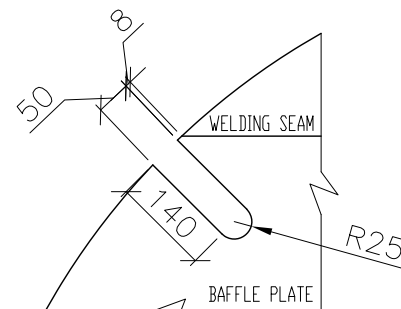
VIEW A-A



VIEW B-B



Sr. NO.	DESCRIPTION	QTY.	MATERIAL	UNIT WEIGHT	WEIGHT kg
1	BAFFLE PLATE AREA=1741634mm <sup>2</sup> (8 thk.)	1	ASTM A-36	1.74 kg/m <sup>2</sup>	109.37
2	BASE PLATE L=117 x W=50 (8 thk.)	2	ASTM A-36	-	0.74
3	BASE PLATE L=104 x W=50 (8 thk.)	2	ASTM A-36	-	0.66
4	BASE PLATE L=33 x W=50 (8 thk.)	2	ASTM A-36	-	0.20
5	PLATE 340x50 (8 thk.)	2	ASTM A-36	-	2.14
6	PLATE 130x50 (8 thk.)	2	ASTM A-36	-	0.82
TOTAL WEIGHT kg					113.93

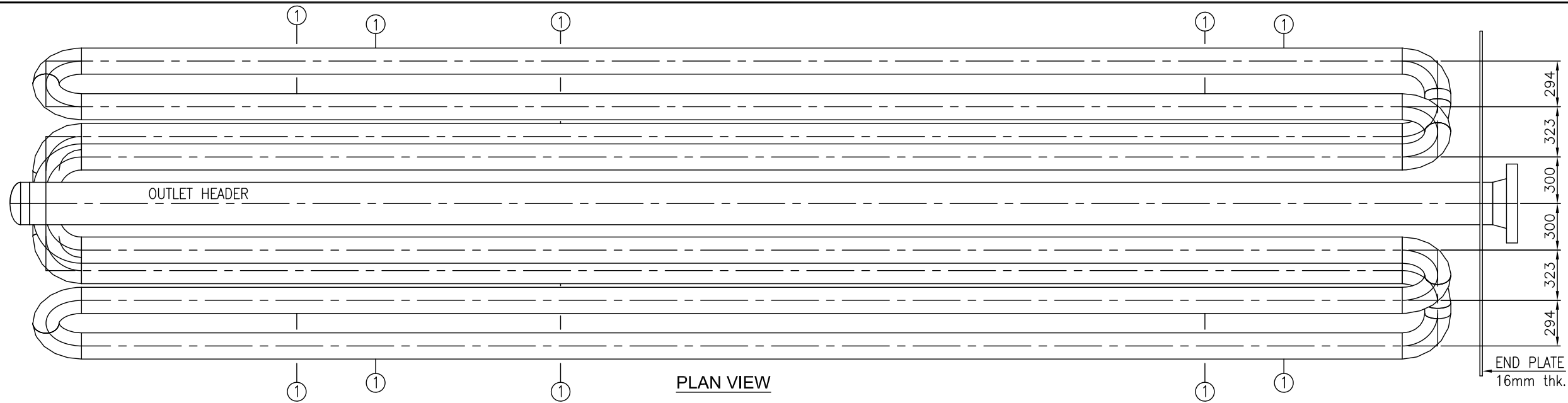
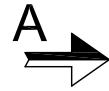


DETAIL-3

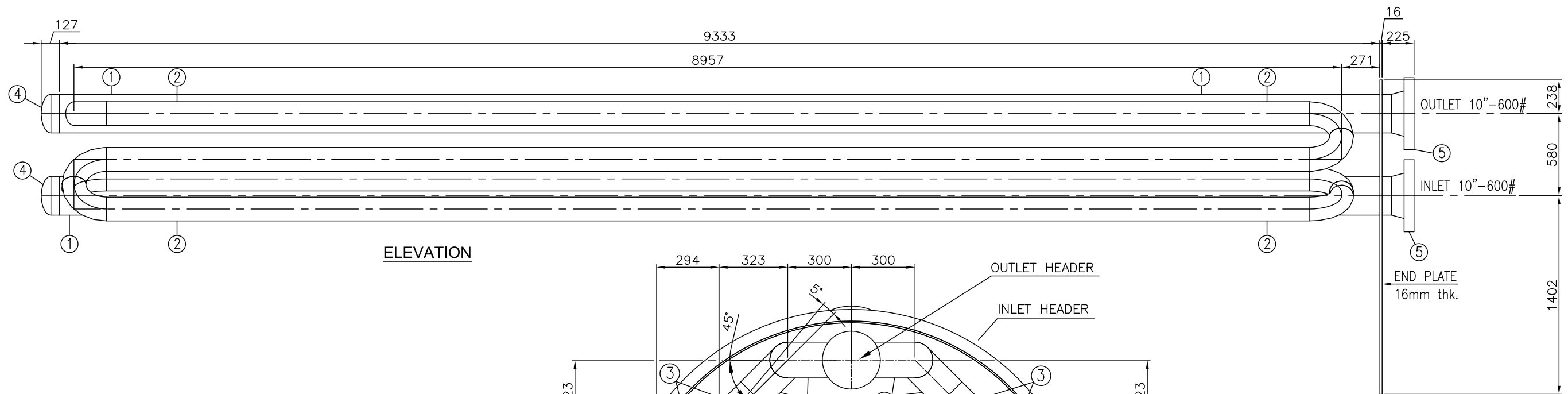
### NOTES:

- ALL DIMENSIONS ARE IN MM UNLESS OTHERWISE STATED.
- ALL DIMENSIONS, ELEVATIONS AND ORIENTATIONS TO BE VERIFIED BY THE CONTRACTOR BEFORE UNDERTAKING ANY KIND OF FABRICATION, CONSTRUCTION AND INSTALLATION

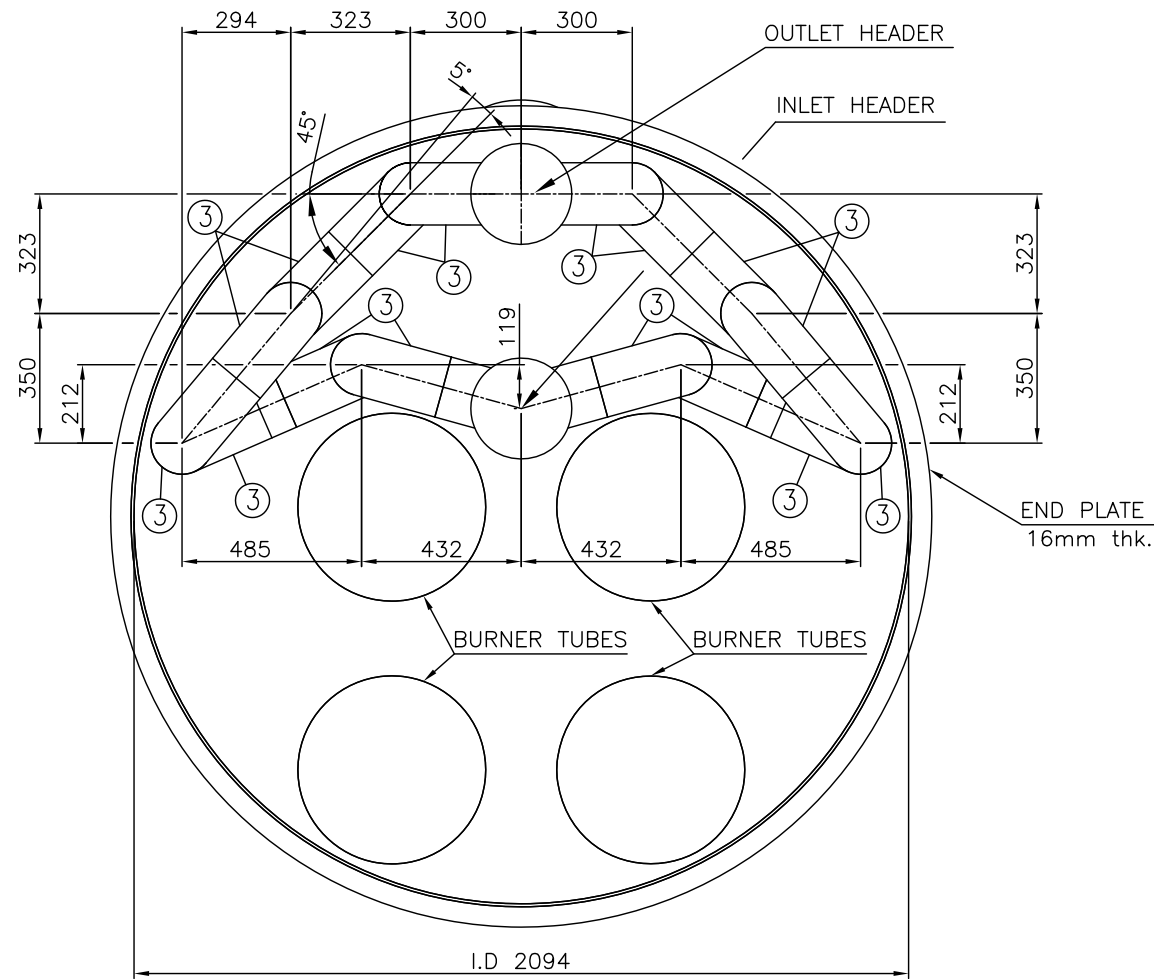
0	12-03-2022	ISSUED FOR REVIEW	NU	SALMAN SALMAN (OGDCL) (OGDCL)
REV.	DATE	DESCRIPTION OF REVISION	PREP'D:	CHECK APPR.
CONTRACTOR : <b>VELOSI</b> Engineering For A Safer World				
CLIENT : <b>OIL &amp; GAS DEVELOPMENT COMPANY LTD.</b>				
TITLE : <b>DETAILED DRWING OF (BAFFLE PLATE 1 x 4)</b>				
LOCATION : <b>SINJHORO</b>				
PROJECT CODE : <b>VISP-031-0120</b>				
DRAWING NO VISP-031-0120-E-2612	SHEET NO 1 OF 1	SCALE -	SHEET SIZE A3	REV 1



PLAN VIEW



ELEVATION





VIEW-A

RE-ISSUED FOR  
CONSTRUCTION

NOTES:

1. ALL DIMENSIONS ARE IN MM, UNLESS SPECIFIED.
2. 8mm THICK. BAFFLE PLATE & 1" TIE ROD WILL BE INSTALLED

Sr. NO.	SIZE	DESCRIPTION	QTY.	MATERIAL	REMARKS
1	10"	PIPE SCH. 80 BE	18.832M	ASTM A-106 GR.B	
2	6"	PIPE SCH. 160 BE	68M	ASTM A-106 GR.B	
3	6"	ELBOW 90° LR SCH. 160 BW	16	ASTM A-234 Gr. WPB	
4	10"	CAP SCH. 80 BW	2	ASTM A-234 Gr. WPB	
5	10"	W.N. FLANGE SCH. 80 600#.	2	ASTM A-105	EXISTING MATERIAL TO BE USED

1	10-03-2022	RE-ISSUED FOR CONSTRUCTION	NU	SALMAN SALMAN	(CDDL) (CDDL)
0	09-03-2022	ISSUED FOR CONSTRUCTION	NU	SALMAN SALMAN	(CDDL) (CDDL)
REV.	DATE	DESCRIPTION OF REVISION	PREP'D:	CHECK	APPR.
CONTRACTOR :  Velosi Integrity & Safety Pakistan (Pvt.) Ltd. 401, 4th floor Plot No.19-A-1 Block-6 PECHS, Karachi, Pakistan					
CLIENT :  OIL & GAS DEVELOPMENT COMPANY LTD.					
TITLE : E-2612 DETAILED DRWING OF WATER BATH HEATER GAS TUBES					
LOCATION : SINJHORO					
PROJECT CODE : VISP-031-0120					
DRAWING NO VISP-031-0120-E-2612	SHEET NO 1 OF 1	SCALE 1:30	SHEET SIZE A3	REV 1	

