

Financial Bid Format:

The bidders should submit their quotations as per below format:

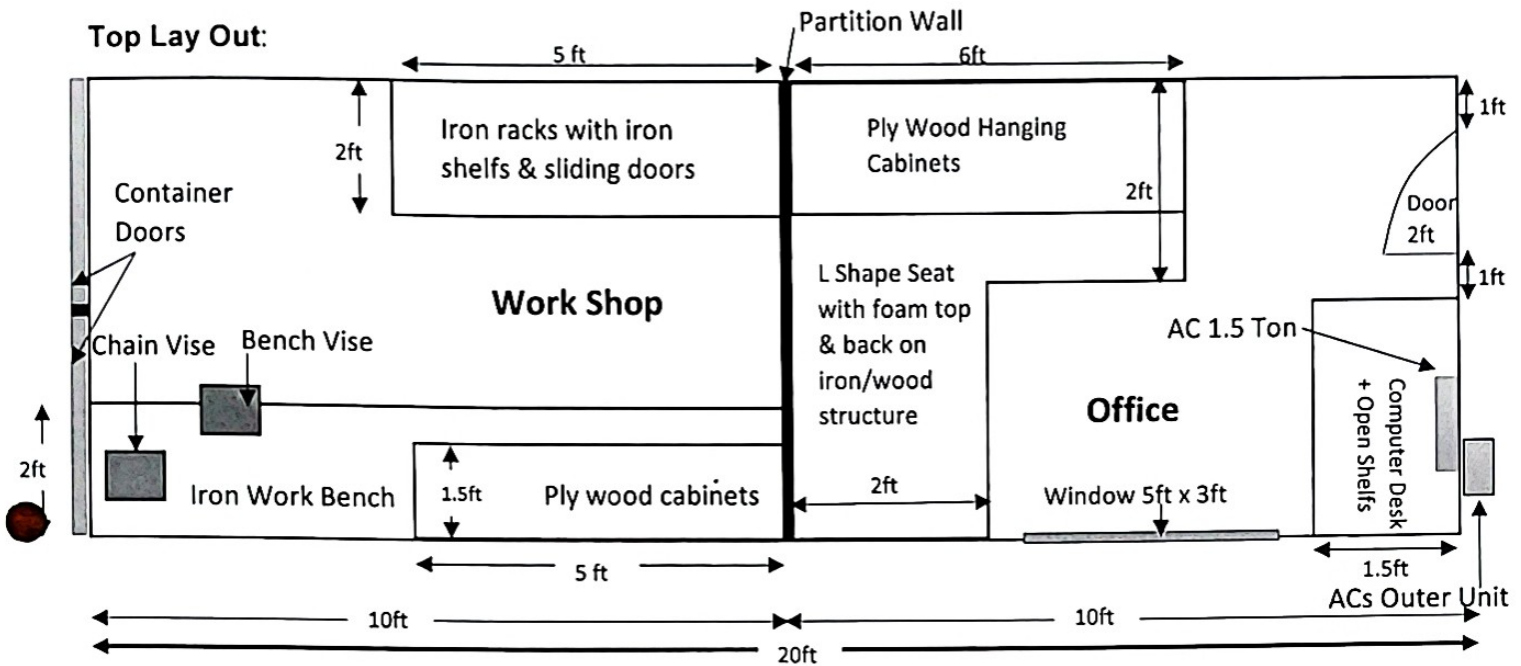
<u>Sr. No.</u>	<u>Description</u>	<u>Quantity</u>	<u>Unit Price (A)</u>	<u>Punjab Provincial Tax on Services (B)</u>	<u>Total Price Including Tax (A+B)</u>
1	Services Charges for fabrication of 20ft shipping container into a field workshop cum office	01	Filled by Bidder	Filled by Bidder	Filled by Bidder

TERMS AND CONDITIONS

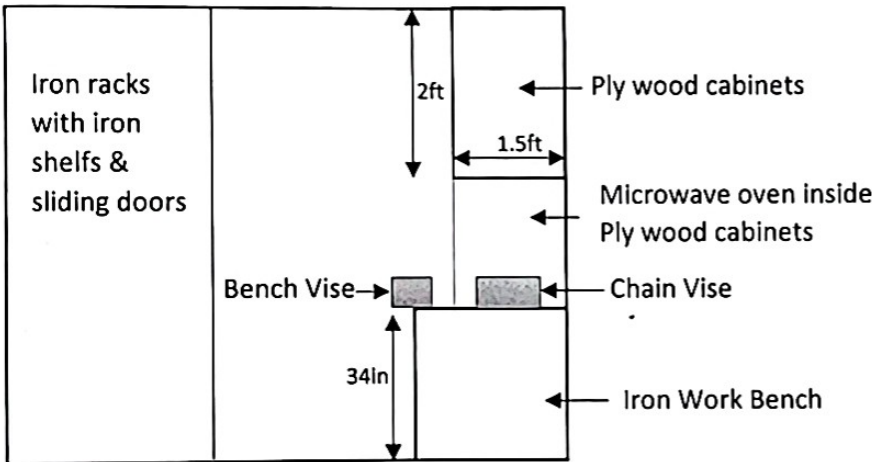
1. Quoted prices should be in PKR inclusive of all Taxes
2. OGDCL reserve the right to deduct 4.5% income tax for filler & 8% income tax for non filer on service charges & submit the tax in FBR.
3. All material used in fabrication to be provided by the bidder.
4. An empty non insulated 20ft container will be provided by OGDCL. Bidder can visit OGDCL field Kotsarang to inspect the container.
5. Contractor will provide 06-Month warranty for material used in fabrication of container. All material should support rough movement of container from different fields to field.
6. The quotes should be sent to **Oil & Gas Development Company Ltd Logistic Field Kotsarang C/O TCS Office Talagang District Chakwal Punjab** in closed envelope addressed to Operations Manager by hand or postal address.
7. The quotes will be opened on the date as mentioned in the tender notice, the bidder can mobilize his representative to site.
8. Surety bond of Rs.100,000/- (One Hundred Thousand Rupees) in favor of Operation Manager Logistic Field Kot Sarang at time of bid submission by all participants.
9. The successful bidder will be responsible to fabricate 20ft container as per description given below within 45 days after award of contract. Fabrication work to be done at OGDCL field kotsarang, OGDCL will provide the conveyance for mobilization of material & provide the accommodation at field.

Workshop + Office container specs:

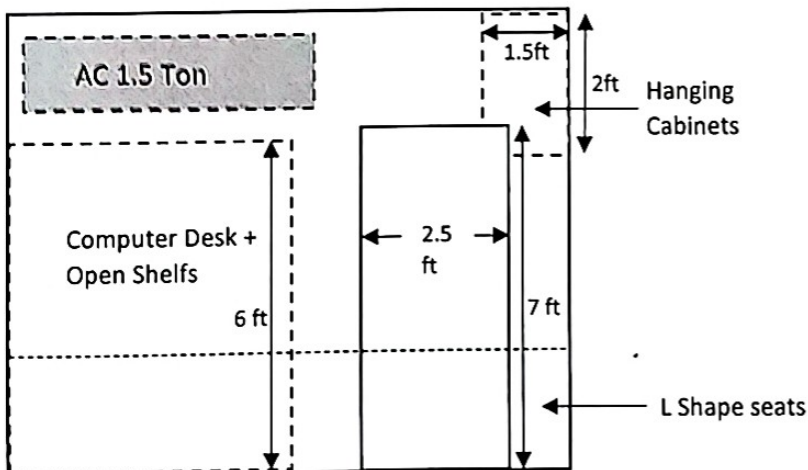
Top Lay Out:



Work Shop Front View



Office Front View




Work Shop side should have the following	
Sr. No	Description
1	Roof & walls should have proper heat insulation
2	Anti-slip steel floor of workshop side
3	Gray color acrylic sheets on walls & roof.
4	Proper lightening (LEDs), wiring (of renown brand) & electric sockets at different positions.
5	30-liter microwave oven (reputed company) inside cabinets. Bidder to provide warranty card & date of purchase.
6	Underneath the iron work bench should have sliding iron or aluminum racks.
7	Heavy-duty chain vise & Bench vise to be bolted on top of work bench.
8	All ply wood cabinets should have hydraulic hinges with soft closing function.

Office side should have the following	
Sr. No	Description
1	Electric distribution panel in office side having circuit breakers for office, workshop, microwave oven & AC along with Earth-leakage circuit breaker.
2	Roof & walls should have proper heat insulation
3	Anti-slip Mat Flooring. Gray Color
4	White color acrylic sheets on walls & roof.
5	Proper lightening (LEDs), wiring (of renown brand) & electric sockets at different positions.
6	1.5 Ton DC inverter AC (Heat & Cool). Bidder to provide warranty card & date of purchase. (reputed company)
7	7ft x 2.5ft iron doors on one walls of the container that will open inside office as shown in layout.
8	All ply wood cabinets should have hydraulic hinges with soft closing function.
9	5ft x 3ft sliding aluminum window on one side as shown in lay out.



OMER SAEED
JE - STIM
KOT SARANG



MEHBOOB UL HAQ
OM (LOG/CMT/STIM) BASE
KOT SARANG
22/07/2021



A

B

C

D

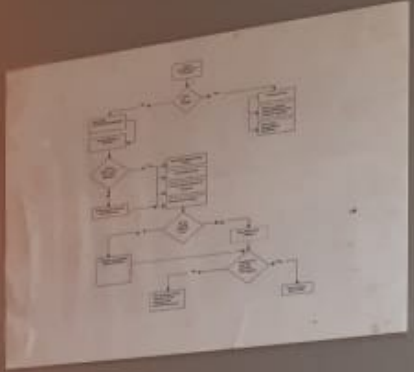
RECYCLE











Revint Quality Policy

The Revint commitment to Quality is to be recognized by...
The following are the main objectives of the Quality Policy:

- Establishing an efficient management system...
- Meeting and exceeding customer expectations...
- Maintaining a high level of customer satisfaction...
- Ensuring the highest quality of products and services...
- Promoting a culture of continuous improvement...
- Encouraging innovation and creativity...
- Ensuring the highest level of safety and security...
- Maintaining a high level of environmental protection...
- Promoting a culture of respect and integrity...
- Ensuring the highest level of transparency and accountability...
- Promoting a culture of excellence...

Revint Director is responsible for implementing the Quality Policy...
Revint Director











Stationary

Life Line
SPRINT







